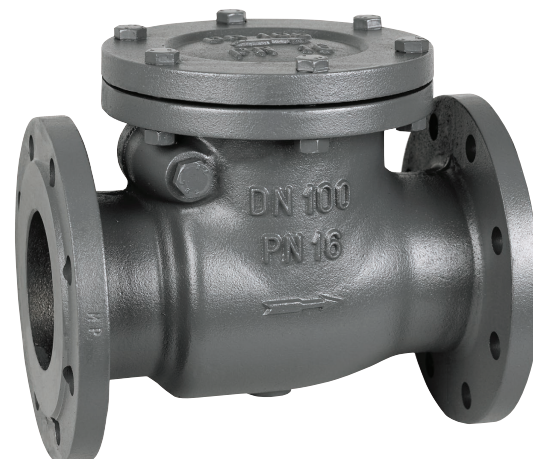


## Cast iron Swing Check Valve Brass/Brass trim PN16

### Main characteristics

- Manufactured in Italy in accordance with EN 12334
- Face-to-face length according to EN 558-1, basic series 48
- Flanged according to EN 1092-2 PN16 with raised face (undrilled, PN10 or other specifications on request)
- Horizontal or vertical installation (flow upwards)
- Flow direction indicated by the casted arrow
- Minimal pressure drop
- Hydrostatically tested according to EN 12266-1: Test type P11-P12 Rate A
- Pressure Equipment Directive 2014/68/UE art. 13 Group 2
- 100% full bore
- Swing check valves are mono-directional and act automatically the function to stop the return flow of the fluid, without manual action.



### Field of application

- Industrial plants
- Sewage Water
- Water treatment
- Air-conditioning systems (HVAC)
- Central heating and cooling circuits
- Non-aggressive fluids
- Tanks
- Sprinkler Booster Pumps systems

### Corrosion protection

- Standard version: externally coated with Phenolic-oil resin with zinc-phosphate high corrosion resistance painting Grey Ral 7011
- On request: integrally epoxy coated
- Customized color available

### Ratings

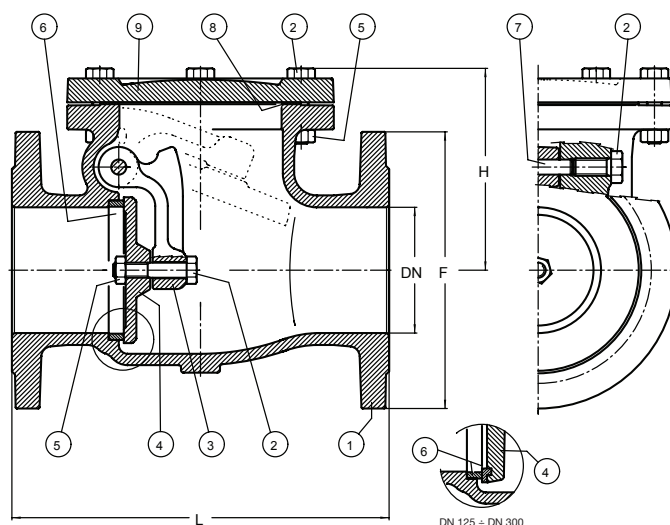
Working temperature (°C)	-10 to +120	+120 to +150
Max Working pressure (bar)	16	14

### Hydrostatically tested according to EN 12266-1 (bar)

P11 Body test	P12 Seat Test water
24	18

### Material specification

Nr	Parts	Material	Specification
1	Body	EN-GJL-250 grey cast iron	EN 1561
2	Screw	Zinc-plated 8.8 carbon steel	EN ISO 4017
3	Hinge	EN-GJL-250 grey cast iron	EN 1561
4	Obturator DN 40-DN 100	Cast brass CB 754-S GM	EN 1982
4	Obturator DN 125- DN 300	EN-GJL-250 grey cast iron +Cast brass CB 754-S GM	EN 1561 EN 1982
5	Nut	Zinc-plated 8.8 carbon steel	ISO 4032
6	Seat	Cast brass CB 754-S GM	EN 1982
7	Pin	Drawn brass CW614N	EN 12164
8	Gasket	Fasit 205	-
9	Bonnet	EN-GJL-250 grey cast iron	EN 1561



### Technical data

DN	40	50	65	80	100	125	150	200	250	300
F mm	150	165	185	200	220	250	285	340	405	460
L mm	180	200	240	260	300	350	400	500	600	700
H mm	115	125	130	140	160	180	200	220	290	330
Weight Kg	9	10	15	20	26	36	50	73	134	199
Kvs value	85	132	326	490	770	1.020	1.700	2.410	3.870	5.670