



Tankube

Steel tanks fully bunded, full-load stackable, homologated



Description

Steel tank fully bunded, full-load stackable, approved by Italian Ministry of Infrastructure and Transport for transportation of hydrocarbons of hazard Class 3; tanks have the following approvals: ADR (road transport), ADN (transport on inland waters), IMDG (sea transport) and RID (rail transport). Steel tank, horizontal, 950 l capacity (Tankube 960) or vertical 440 l (Tankube 440) made in carbon steel, watertight electro-welded, sandblasted and oven-baked powder coated; equipped with breakwater plate (Tankube 960) and fixed inside a steel container having the function of protection and impermeable secondary containment that can hold a minimum of 110% of the volume of the inner tank and completed with a lockable lid.

Main features

- Hinged lockable lid with safety bars.
- Top lifting lugs located in each corner of the container.
- Forklift pockets for bottom lifting.
- Possibility to connect generator sets even with lid closed and locked.
- Drainage pipe to empty completely the external container; it is provided with safety cap.
- Inspection hatch, diameter 200 mm, provided with gasket and bolted cover.
- Loading access port, made in brass or aluminium, provided with 3" quick cap.
- Three - effects safety and emergency valve - homologated.
- Mechanical level indicator.
- Tankube 960; possibility to have an hose reel with 5 m of 1" rubber hose, or 6 m of 3/4" rubber hose (optional)

Outfittings

Configuration model GE:

Configuration model AC:

- DC fuel transfer pump, mod. DEVIL40 (12 or 24V), flow rate 40 l/min.
- 5 m of hose.
- Automatic nozzle.
- 6 m of battery power cable and bipolar connector
- Optional: digital flow meter, mod. M24.
- Optional: water separator filter.
- Optional: 1 rapid couplings for generator sets feeding (feeding + return line)

Configuration model BC:

- AC fuel transfer pump, mod. DEVIL55 (230 V), flow rate 55 l/min.
- 5 m of hose.
- Automatic nozzle.
- 2 m of power cable with Schuko plug for connection to BC supply (Diesel fuel).
- Optional: digital flow meter, mod. M24.
- Optional: water separator filter.
- Optional: 1 rapid couplings for generator sets feeding (feeding + return line)

Configuration model DF:

- DC fuel transfer pump, mod. DPUMP (12 or 24V), flow rate 60 l/min.
- 5 m of hose.
- Automatic nozzle.
- 6 m of battery power cable and bipolar connector
- Optional: digital flow meter, mod. M24.
- Optional: water separator filter.
- Optional: 1 rapid couplings for generator sets feeding (feeding + return line)

Configuration model ZC:

- DC fuel transfer pump, mod. 12/24V, flow rate 35/70 l/min
- 5 m of hose.
- Automatic nozzle.
- 6 m of battery power cable and bipolar connector
- Optional: digital flow meter, mod. M24.
- Optional: water separator filter.
- Optional: 1 rapid couplings for generator sets feeding (feeding + return line)

Accessories



Filter Water captor 70

For diesel and gasoline. Water absorption and impurity filtration. Filter capacity 30µm. Flow rate 70 l/min.



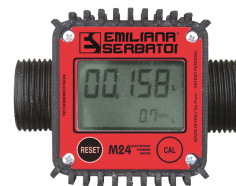
ES Filter

For diesel and gasoline. Water absorption and impurity filtration. Filter capacity 10µm. Flow rate 70 l/min.



Strainer filter stainless steel

For diesel and gasoline. Impurity filtration. Filter capacity 60µm. Flow rate 50 l/min.



Digital fuel meter, mod. M24, for Diesel Fuel



Hose reel



Rapid couplings

Fuel handling and delivery equipment.

Technical data

Model	Nominal capacity (lt)	Width (mm)	Depth (mm)	Highness (mm)	Empty weight (kg)	Weight with pump unit (kg)
TKK440	434	980	980	1,220	216	221
TKK960	956	1,130	1,530	1,330	386	404

Loading Plan

Model	Container 20'	Container 40'	Container 40' HC	Std truck 2700h mm
TKK440	10	24	48	52
TKK960	6	14	14	32

Product code

TK	X	X	X	X
Model	Fuel	Volume	Pump	Nozzle
TK = Tankube	(vuoto) = Diesel and gasoline K = Diesel and gasoline homologated	440 = 440 l 960 = 960 l	GE = Without pump A = 40 l/min B = 55 l/min D = 60 l/min	C = Automatic 60 l/min F = Automatic 80 l/min

Not all combinations are available

Approval



Transportable materials	Diesel / UNI1202 Gasoline / UNI1203
Clases ADR	3
Packaging group	II - III