

SINKMET

PENETRATING SOLUBLE INKS



"The only possible technical granite digital decoration"

METCO





INSTITUTIONAL

1990 / METCOLOUR

1993 / PATENT BLACK

1996 / SECOND PATENT ON YELLOW + ADDITIVES

1996 / METOX

1999 / METCO SPAIN OPENING

1999 / METCO CHINA OPENING

2000 / INKMET (SUITABLE FOR DIGITAL MACHINE)

2005 / METCOROLL (SUITABLE FOR ROTOCOLOR)

2005 / METCLEAN (SURFACES SEALERS)

2008 / METCO BRASIL OPENING

2014 / SUPERFICIMAGNIFICHE(DIGITAL INTEGRATED SYSTEM)

2014 / SINKMET SSI (DIGITAL SOLVENT SOLUBLE INKS)

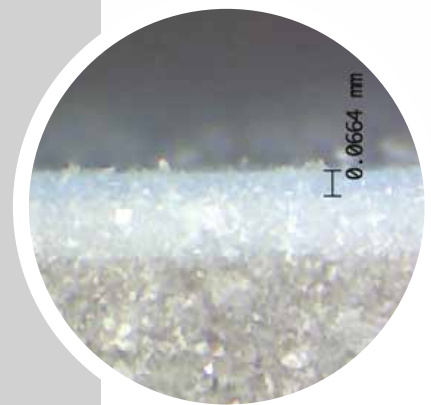
2016 / REBRANDED SINKMET SSI



SINKMET (SSI) (SOLVENT SOLUBLE INKS)



- 4 Basic colours (CMYK)
- 1 Precious metal dark **Black** colour [Ru]
- 1 Precious metal intense **Magenta** colour [Au]
- Boiling Point higher than 250°C
- Solvent of aliphatic nature (kind of naphtha)
- NO solid content
- Colour replacement time in the inkjet circuit 60-90 min
- PENETRATION in the ceramic body up to 0,5 mm
- SINKING AID required 10-50 gr/sqm



SINKMET (SSI TIPS)






- Totally manufactured in Italy by METCO chemical plants
- Fully certified from the major machinery and head manufactures
- Possibility to produce fully lapped tile whitout any glaze or additional cover (no sandwiching)
- Minimizing stripes printing due to a little diffusion of the single colour drop, masking the eventual lack of a nozzle



DIGITAL MACHINE (POSSIBLE BARS CONFIGURATION)



- A**  Standard
-
- B**  Customized possibility
-
- C**  Sinkmet and Sinking aid are eventually alternately loaded in the bars in order to obtain a deeper colour penetration.

CHEMICAL CLEANERS (CIRCUIT CLEANERS)

SINKMET AT switching from pigments to SSI
SINKMET AD switching from SSI to others



SINKMET EE-BS-DG (POST TREATMENTS) SINKING THE COLOURS INTO THE BODY



- Sinks the colours into the porcelain body (tuning the colour)
- Organic nature
- Digitally applied (localized on specific drawing areas)
- Amount 10-50 gr/sqm



C.A.B.S. (CUSTOMER ADDITIVATED BODY SLIP):

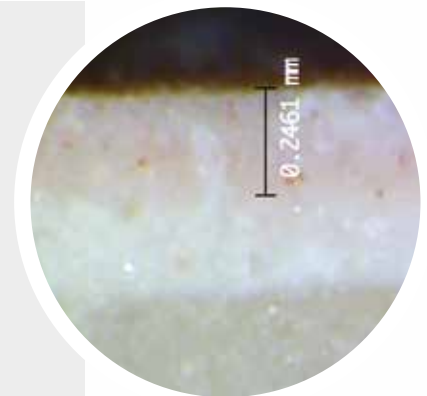
It is possible to have a large Gamut thanks to some additives developed by METCO despite the very low cations concentration due to SSI dispersion inside the body.

Metco additives have to be added to the body slip.

2 possible industrial applications:



1/ Adding Metco additives (METOX) to the customer's slip, applying by pressurized waterfall, bell (campana) or double disk in order to obtain 400-600 micron layer, thick enough to produce lappato.



C.A.B.P. (CUSTOMER ADDITIVATED BODY POWDER):



2/ Adding Metco additives (METOX) directly to customer's slip, than spray dryng, applying the atomized powder by double charge. A 2000 micron thick layer will be obtained through this application.



CUSTOMER GRES LIQUID SLIP PLUS ADDITIVES GRES PORCELAIN SLIP *

Customer gres liquid slip plus additives	92,4%
gres porcelain slip	
LITOMET PE 60 (METCO)	2,0%
METOX 900 (METCO)	5,0%
METOX 1100 (METCO)	0,5%
METOX 200 (METCO)	0,1%

OPTION to obtain a whiter primer:

ZIRCONIUM SILICATE KE	5,0%
-----------------------	------

DENSITY 1650-1750 gr/l

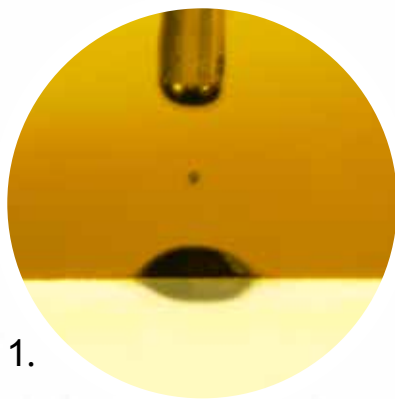
DRY RESIDUE 45 micron : 1-3%

APPLICATION WATERFALL 500-700 gr/sqm of dry material

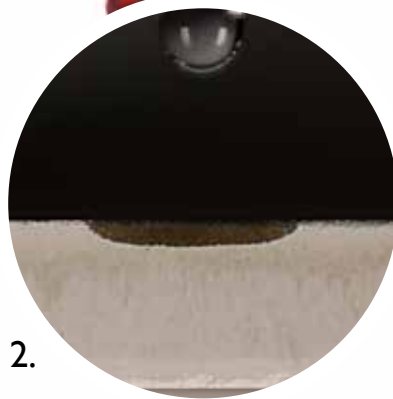
MZG254 (METCO MADE) (UNIVERSAL FORMULA WITH ADDITIVES FOR WET APPLICATION) *



* Basic composition to be adjusted to customer's working parameters



1.



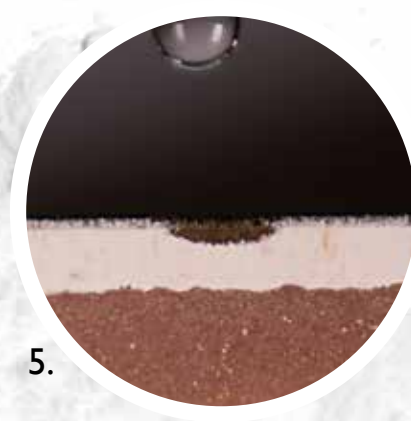
2.



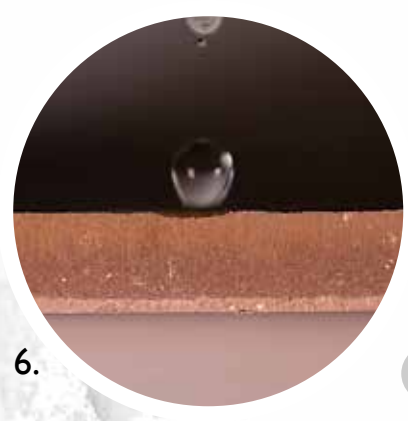
3.



4.

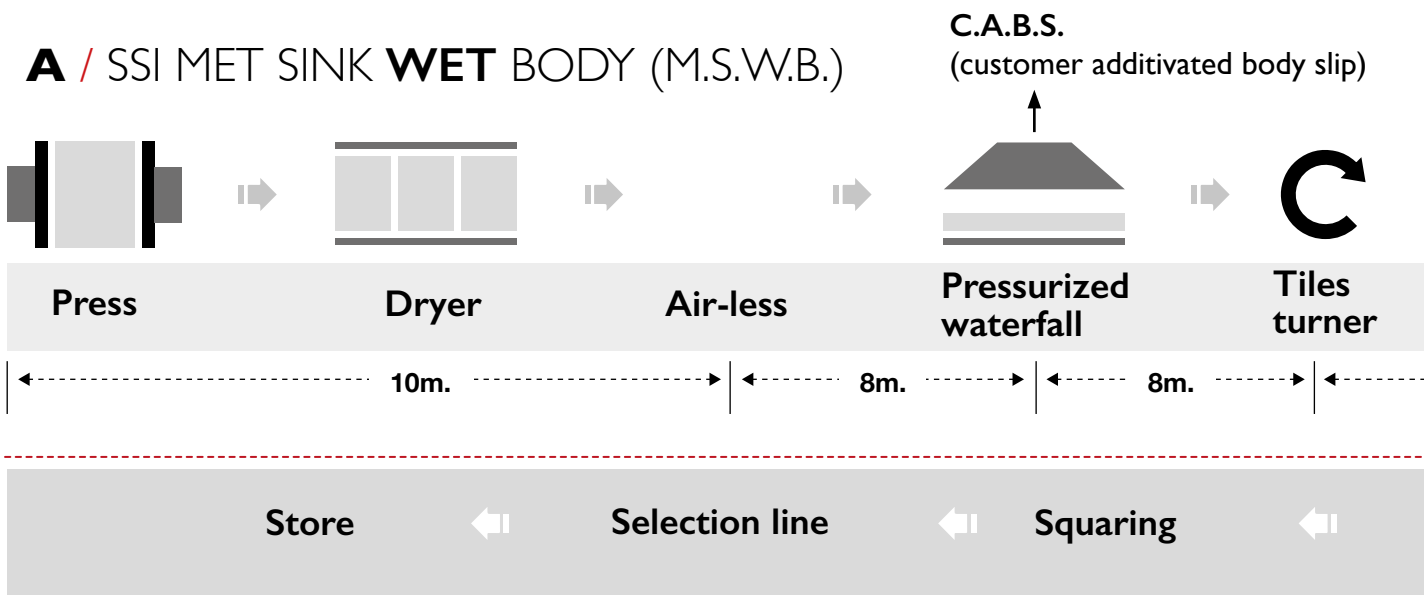


5.



6.

A / SSI MET SINK WET BODY (M.S.W.B.)

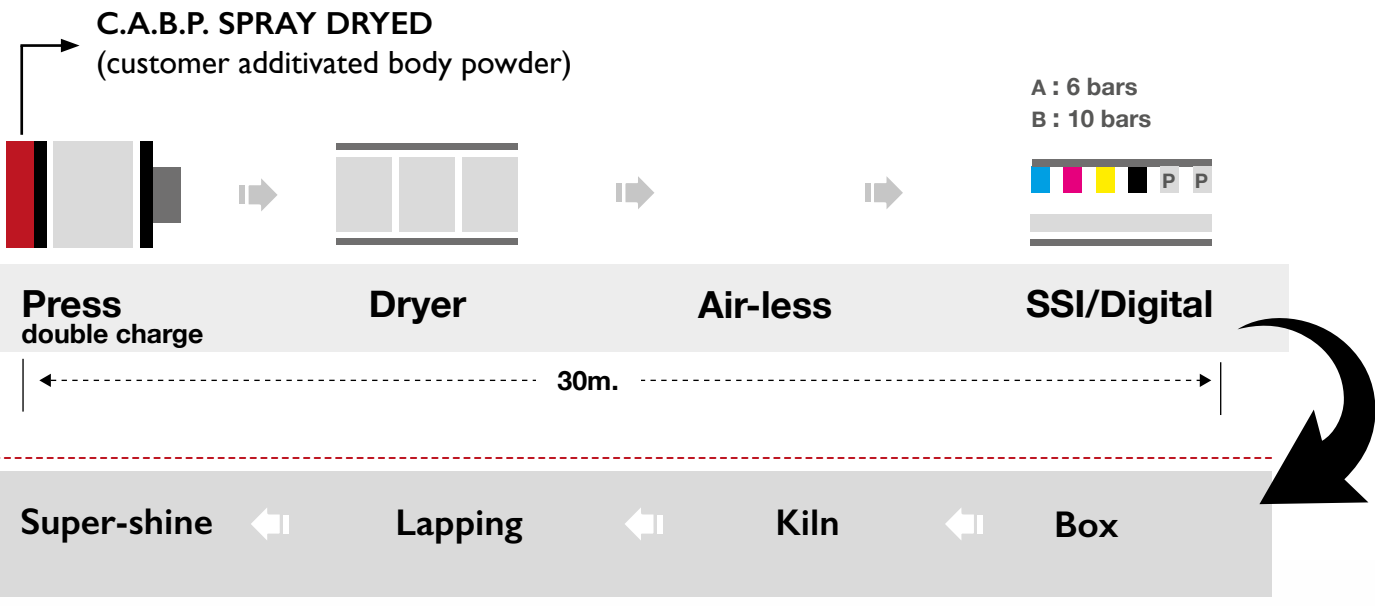
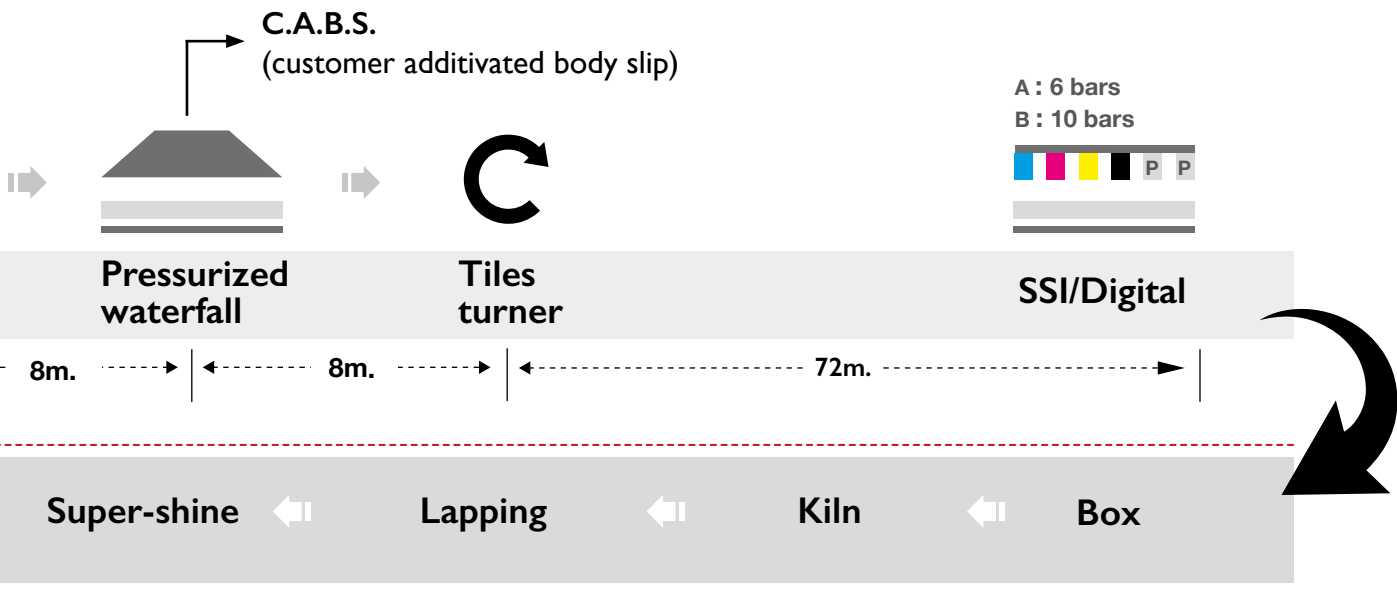


B / SSI MET SINK DRY BODY (M.S.D.B.)





LAY OUT

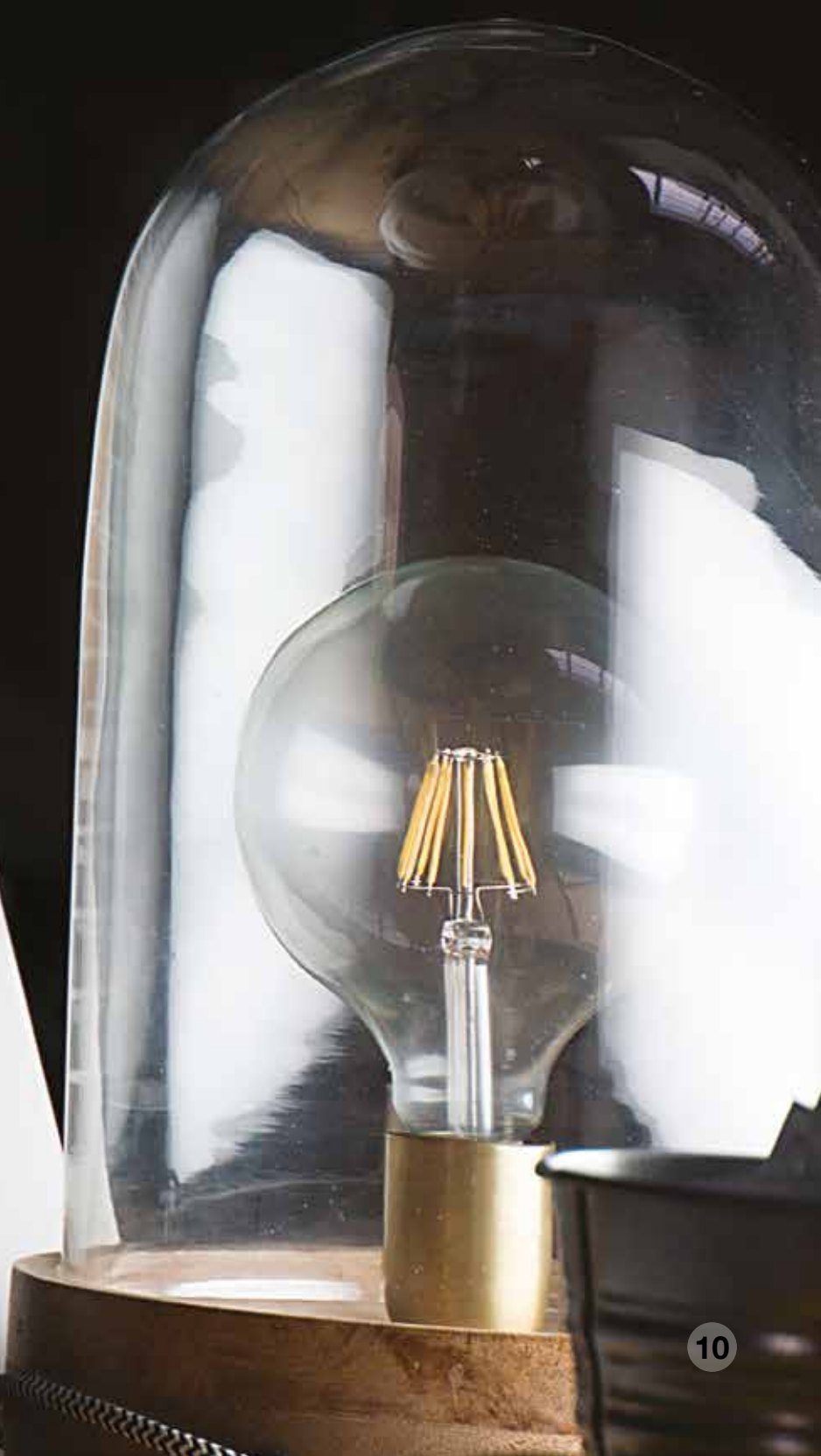


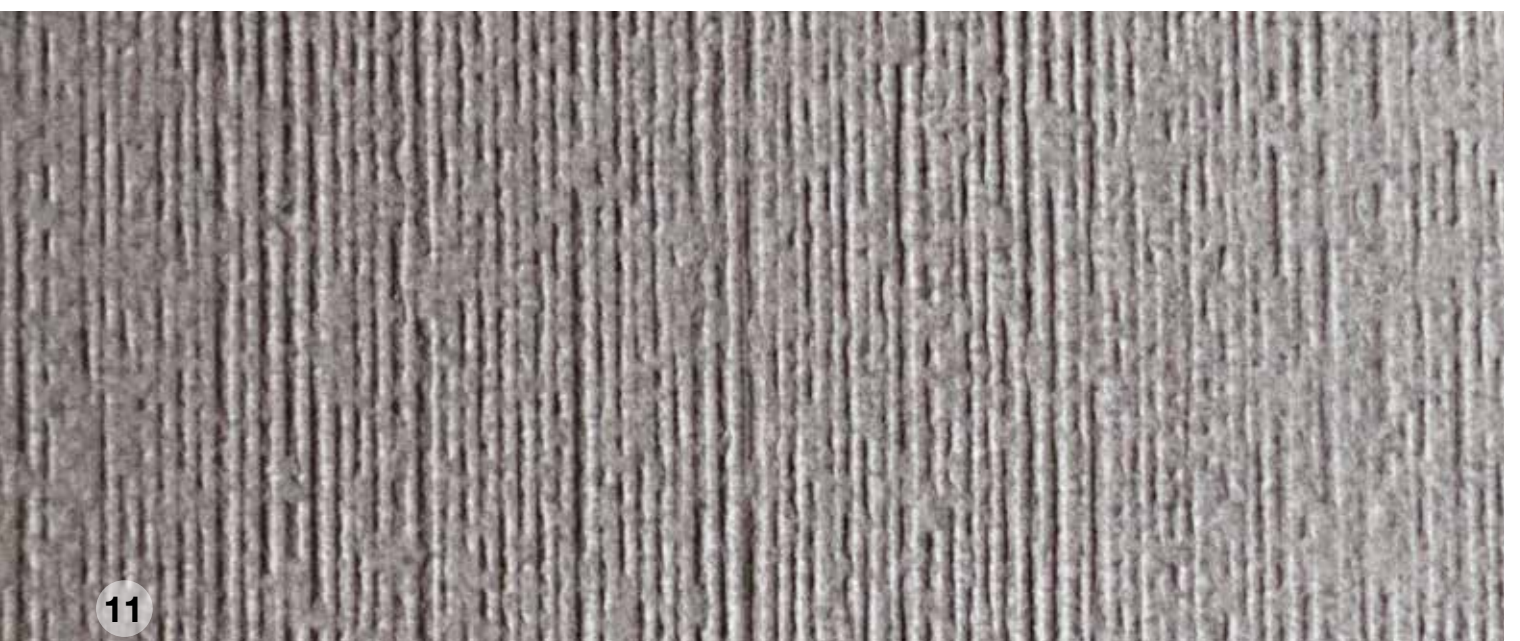


metco.it



SINKA MET
DIGITAL COLO







**PHOTO
LIBRARY**



SAFETY DATA SHEET

16 SECTIONS ACCORDING TO THE EUROPEAN NORMATIVES UEN830/2015

1/ IDENTIFICATION OF THE SUBSTANCES/MIXTURE COMPANY
UNDERTAKING

2/ HAZARDS IDENTIFICATION

3/ COMPOSITION/INFORMATION OF INGREDIENTS

4/ FIRST AID MEASURES

5/ FIREFIGHTING MEASURES

6/ ACCIDENTAL RELEASE MEASURES

7/ HANDLING AND STORAGE

8/ EXPOSURE CONTROLS/PERSONAL PROTECTION

9/ PHYSICAL AND CHEMICAL PROPERTIES

10/ STABILITY AND REACTIVITY

11/ TOXICOLOGICAL INFORMATION

12/ ECOLOGICAL INFORMATION

13/ DISPOSAL CONSIDERATIONS

14/ TRANSPORT INFORMATION

15/ REGULATORY INFORMATION

16/ OTHER INFORMATION

NORMATIVES

ALL THE SSI MATERIALS ARE R.E.A.C.H. COMPLIANTS

R.E.A.C.H. (REGISTRATION EVALUATION - AUTHORIZATION RESTRICTIONS
OF CHEMICALS)

CE 1907-2006



Notes:



METCO

METCO SRL

Head Office - Administrative Office - Production
Via G. Galilei 4
40053 Valsamoggia, Loc. Monteveglio - BO - Italy
Ph +39 051 830393
Fax +39 051 830066
info@metco.it

Commercial Office - Reserch Laboratory
graphic
Via Sacco Vanzetti 53/55
41042 Fiorano Modenese - MO - Italy
Ph +39 051 830393
Fax +39 0536 831955
info@metco.it

METCO PENINSULAR S.L.

Calle Francia, 60 - Nave 23B -
12006 Castellon de la Plana - Spain
Ph +34 964 296 044
administracion@metco.es

METCO DO BRASIL INDUSTRIA E COMERCIO DE ADITIVOS PARA CERAMICA LTDA

Rodovia Otavio Dassoler, 1885 88812-850 Bairro
Linha Batista Criciuma / SC - Brasil
Ph / Fax +55 48 3442 2147

JIAXING METCO CERAMIC TECHNOLOGY CO. LTD.

NO.746 SHITONG RD. XIUZHOU INDUSTRIAL
PARK
JIAXING CITY, ZHEJIANG PROV. 314031 CHINA
Ph +86.573.83999661 - Fax +86.573.83995909

www.metco.it