



**COLLE CORVIANO**

LORETO APRUTINO

[www.collecorviano.it](http://www.collecorviano.it)

[info@collecorviano.it](mailto:info@collecorviano.it)



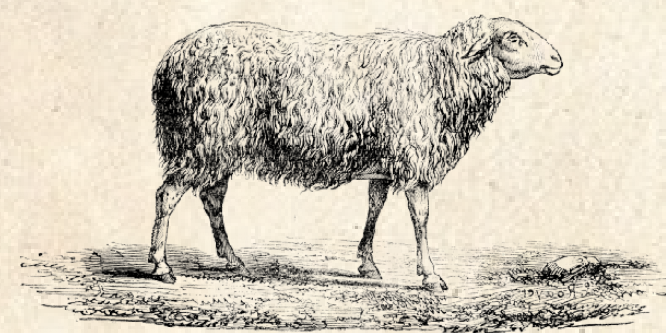
# THE ABRUZZO REGION

ONE OF THE MOST EXTENSIVE & VALUABLE PROTECTED AREAS IN EUROPE.

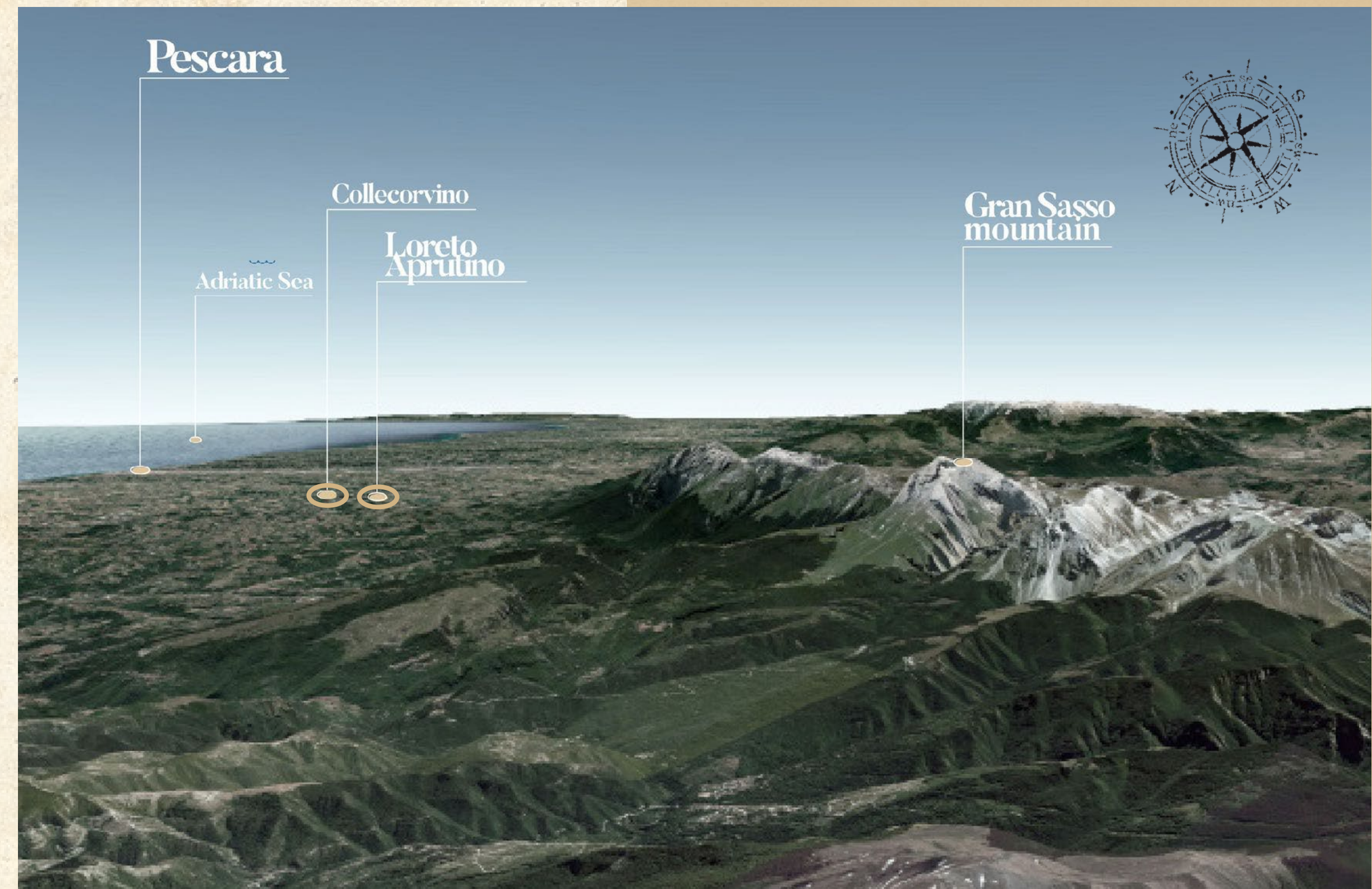


Between the massive Gran Sasso, in the National Park of Abruzzo, and the pristine Adriatic Sea, in an evocative and almost uncontaminated nature, stand Loreto Aprutino and Collecervino, two tightly connected ancient villages with visible medieval influences. Lush landscapes and snow-capped mountains provide the perfect background.

The history of Abruzzo is one of unrest and emigration. Abruzzo was originally conquered by the Romans, who divided the territory into two parts. With the fall of the Empire, Abruzzo fell under the control of the Byzantines, the Lombards and the Franks. The region later became part of the Kingdom of the Two Sicilies and was under the Norman domination when Emperor Frederick II united the area.



DISCOVER MORE



COLLE CORVIANO  
LORETO APRUTINO



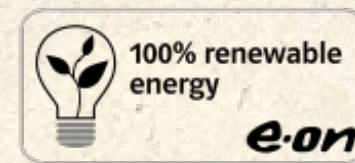
# SUSTAINABLE AGRICULTURE & PRESERVATION

MORE THAN SIMPLY AN ASPIRATION OR  
MISSION, IT IS A LIFESTYLE.



Our family aspires to encompass a sustainable practice in our lives and production methods to live in a clean environment and maintain our family business and legacy for future generations.

Thus our commitment is to a sustainable ecosystem that focuses on healthy lifestyle, limited consumption of energy and water resources, and a sustainable waste management approach, in order to improve our habitat.



DISCOVER MORE



COLLE CORVIANO  
LORETO APRUTINO



# OUR FAMILY

KNOWLEDGE AND RESPECT FOR  
OUR LAND.



Colle Corviano wines are sustainably produced by the Bicultural Redmont-Di Tonno family since 2018, when they took over the existing estate. We were drawn to Colle Corviano by the extraordinary potential of this region and bonded by our common aspirations. Wine has become a family business and family passion that has been proudly built on Italian entrepreneurial spirit and genuine hospitality.



Antonella Di Tonno



Rodrigo Redmont



DISCOVER MORE



COLLE CORVIANO  
LORETO APRUTINO



# THE ESTATE

## AUTHENTIC TERROIR



Nestled in a unique region of Italy lies our small 30 ha family winery. The varietals include Pecorino, Chardonnay, Trebbiano, Pinot Grigio, Sangiovese and Montepulciano. The vineyards lie between 250 and 350 meters on mostly clay soils with very good presence of limestone and some sand. The area's topography is not marked by especially steep slopes, since erosive phenomena have been limited in time.

Colle Corviano is truly off the beaten track, but it's often the road less traveled that leads you to places that will be etched in your mind forever, provide food for the soul and leave you lingering towards your next visit.



DISCOVER MORE



COLLE CORVIANO  
LORETO APRUTINO



# PRODUCTS



[DOWLOAD AWARDS](#)



**COLLE CORVIANO**  
LORETO APRUTINO



# WORLDWIDE DISTRIBUTION





**COLLE CORVIANO**

LORETO APRUTINO

Società Agricola Colle Corviano srls

65014 Loreto Aprutino (PE) Italy

Tel. +39 085.8289039

[www.collecorviano.it](http://www.collecorviano.it)

[info@collecorviano.it](mailto:info@collecorviano.it)