



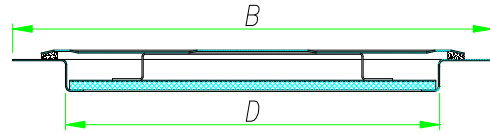
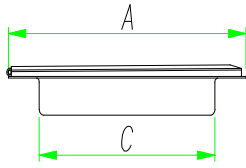
Inspection hatch + Key





Inspection hatch

Material: AISI 304 BA - COPPER



Product code	Description	Dimensions					
		A	B	C	D	E	F
000001010100	Inspection hatch Mod. 01A	200	290	170	260		
000005010100	Inspection hatch Mod. 01B	165	290	127	235		
000001910100	Inspection hatch Mod. 01B	165	295	127	235		
000016910100	Inspection hatch Mod. 02	225	306	127	235		
000011010100	Inspection hatch Mod. 03	220	330	170	260		
000014010100	Inspection hatch Mod. 04	330	330	290	290		
000016010100	Inspection hatch Mod. 05	113	190	93	152		
000017010100	Inspection hatch Mod. 05	113	172	93	152		
000020510100	Inspection hatch Mod. 06	162	222	120	180		
000026410100	Inspection hatch Mod. 06	158	230	120	180		
000020410100	Inspection hatch Mod. 06	160	250	120	180		
000033810100	Inspection hatch Mod. 07	286	390	246	314		
000001010200	Inspection hatch Mod. 01A COPPER	200	290	170	260		
000005010200	Inspection hatch Mod. 01B COPPER	165	290	127	235		
000001910200	Inspection hatch Mod. 01B COPPER	165	295	127	235		
000015610200	Inspection hatch Mod. 02 COPPER	225	306	127	235		
000015010200	Inspection hatch Mod. 03 COPPER	220	330	170	260		
000014010200	Inspection hatch Mod. 04 COPPER	330	330	290	290		
000016010200	Inspection hatch Mod. 05 COPPER	113	190	93	152		
000017010200	Inspection hatch Mod. 05 COPPER	113	172	93	152		
000020110200	Inspection hatch Mod. 06 COPPER	162	222	120	180		
000020310200	Inspection hatch Mod. 06 COPPER	158	230	120	180		
000020410200	Inspection hatch Mod. 06 COPPER	160	250	120	180		