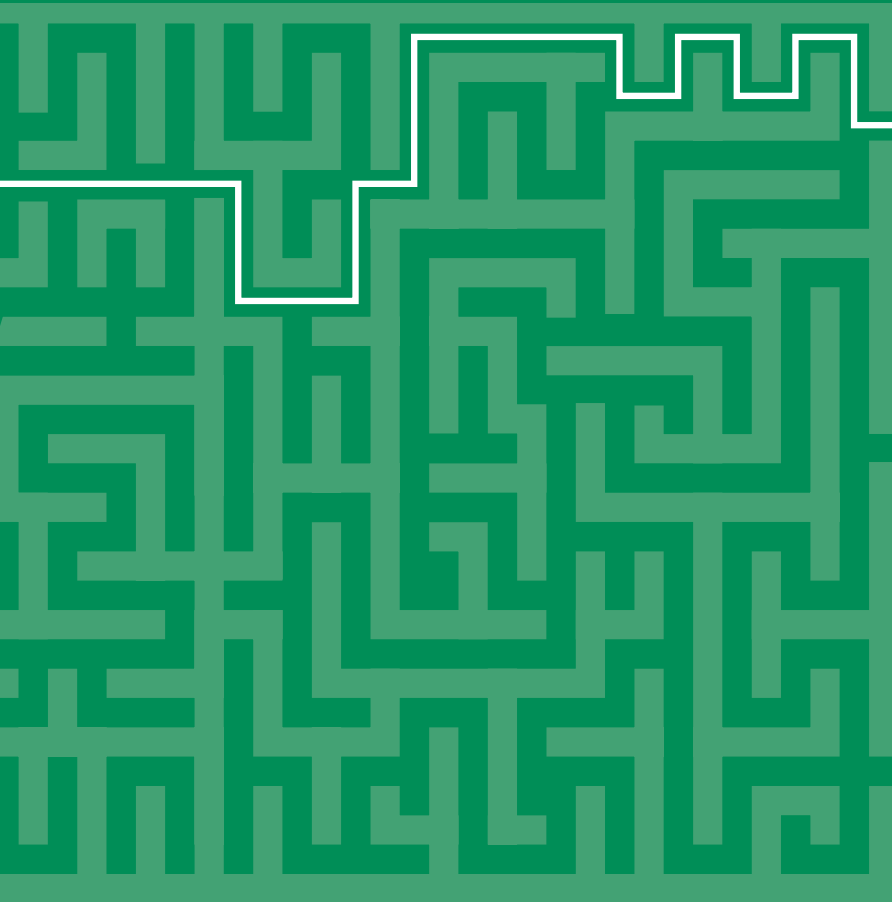
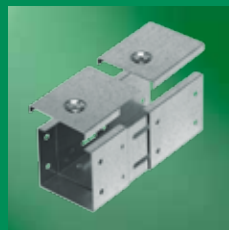
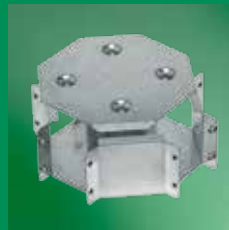
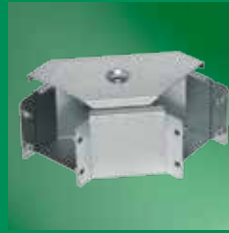
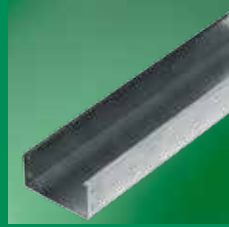


ZM

CLASSIFIED CLASSIFIED
UL C UL US E 471266

**Canaline metalliche componibili
per posa cavi a bordo macchina**

*Sectional trunking for cable laying
around machines*



ZM

ZM

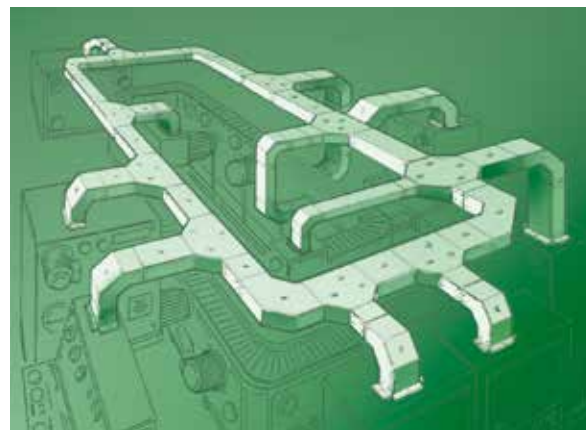
Perché scegliere ZM...

Why choose ZM...

1

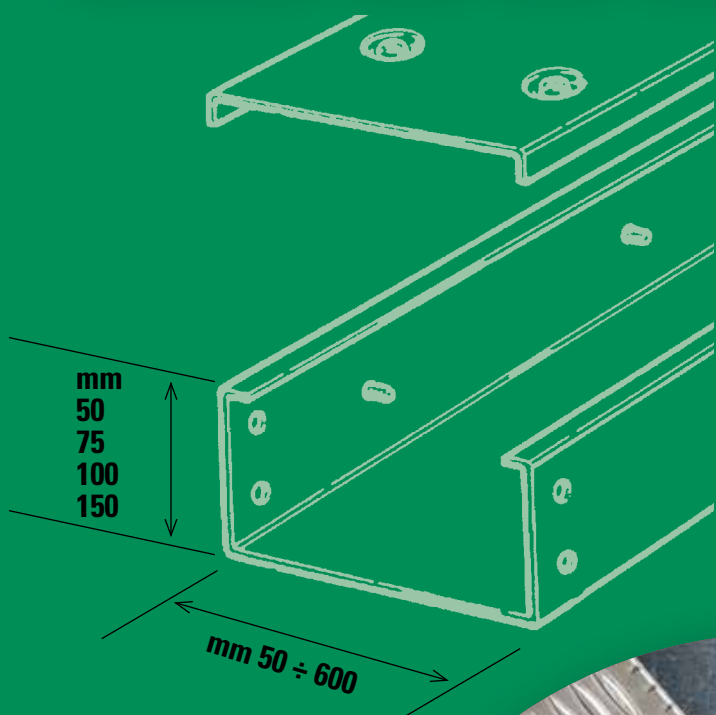
PROGETTATA APPOSITAMENTE PER MACCHINE UTENSILI

DESIGNED ESPECIALLY
FOR MACHINE TOOLS



Alti spessori, autoportante e possibilità
di pre-montaggio lontano dall'isola di lavoro

*High thicknesses, self-supporting and possibility to
pre-install at a distance from the system.*



N.B. Tutte le misure sono espresse in millimetri salvo
diversa indicazione, e sono da intendersi nominali.

Note: All the dimensions are in millimetres unless
otherwise stated. Dimensions are nominal.

2

FACILITÀ DI MONTAGGIO EASY ASSEMBLY



Componenti completi di:

- inserti filettati atti al rapido montaggio
- trecce di collegamento equipotenziali e corda di sicurezza
- coperchi con chiusura a farfalla oppure incernierati con fermagli a ginocchiera

Components complete with:

- threaded inserts for rapid assembly
- hinges with equipotential connection and nylon safety cord
- covers with winged locking or hinged covers with toggle clamps

3

QUALITÀ, ADATTABILITÀ QUALITY, ADAPTABILITY

Per garantire una maggiore aereazione dei cavi e leggerezza dell'impianto sono previste le versioni perforate. I coperchi possono essere a scatto oppure incernierati

In order to guarantee better cable aeration and lightness of the system, perforated versions are available. Snap covers and hinged covers are available.



4

SOLIDITÀ SOLIDITY



Il sistema ZM viene fornito anche nella versione calpestabile con coperchio mandorlato, vedi pag. 168

The ZM system is supplied also in a trampling cover version, see p. 168

NON CALPESTABILE PER LO STANDARD UL

NOT WALKABLE PER UL STANDARD

La Zamet S.p.A. ha ottenuto un'altra prestigiosa certificazione: il **marchio UL**. Ampiamente riconosciuto e fidato per i consumatori, rappresenta la maggiore garanzia per i prodotti conformi ai requisiti di sicurezza **USA, Messico e Canada**.

*Zamet S.p.A. has attained another prestigious certification: the **UL mark**. Widely recognized and trusted by consumers, it is the best guarantee for products which comply with **US, Mexican and Canadian** safety requirements.*

 www.zamet.it Via Torino, 109 Volpiano (TO)	 CE	 CLASSIFIED METAL CABLE TRAY IN ACCORDANCE WITH THE STANDARD FOR METAL CABLE TRAY SYSTEMS CSA-C22.2 No. 126.1 E471266
Catalog Number:		 CLASSIFIED CABLE TRAY AS TO ITS SUITABILITY AS AN EQUIPMENT GROUNDING CONDUCTOR ONLY E471266
Type of material:		
Cable tray Minimum Area:	*WARNING! Do not use as a walkway, ladder or support for personnel. Use only as a mechanical support for cables, tubing and raceways.	
Load Rating kg/m (lb/ft) Span of 2m (6.56 ft.):	*ATTENTION! Ne pas utiliser comme échelle à câbles piétinable ou support pour personnes. A utiliser uniquement comme support mécanique pour câbles, tuyaux et canalisations.	



E 471266