

AUTOSATMOVER®

The Magic of Simultaneous Motion



AUTOMHA
AMERICAS

AUTOMATION MADE SIMPLE

AUTOSATMOVER®

● THE FULLY AUTOMATED CART-BASED STORAGE SYSTEM FOR HIGH THROUGHPUT REQUIREMENTS

AUTOMHA's AUTOSATMOVER is a fully automated, high density, deep-lane storage system offering superior throughput compared to other types of automated solutions. It is best utilized for applications that have multiple pallets of the same SKU.

Utilizing carts at each level, bringing pallets of goods both to and from automated **LIFTERS**, incredible throughput is available. Additional **LIFTERS** per module can also be added to increase throughput even further. All controlled by AUTOMHA Software.

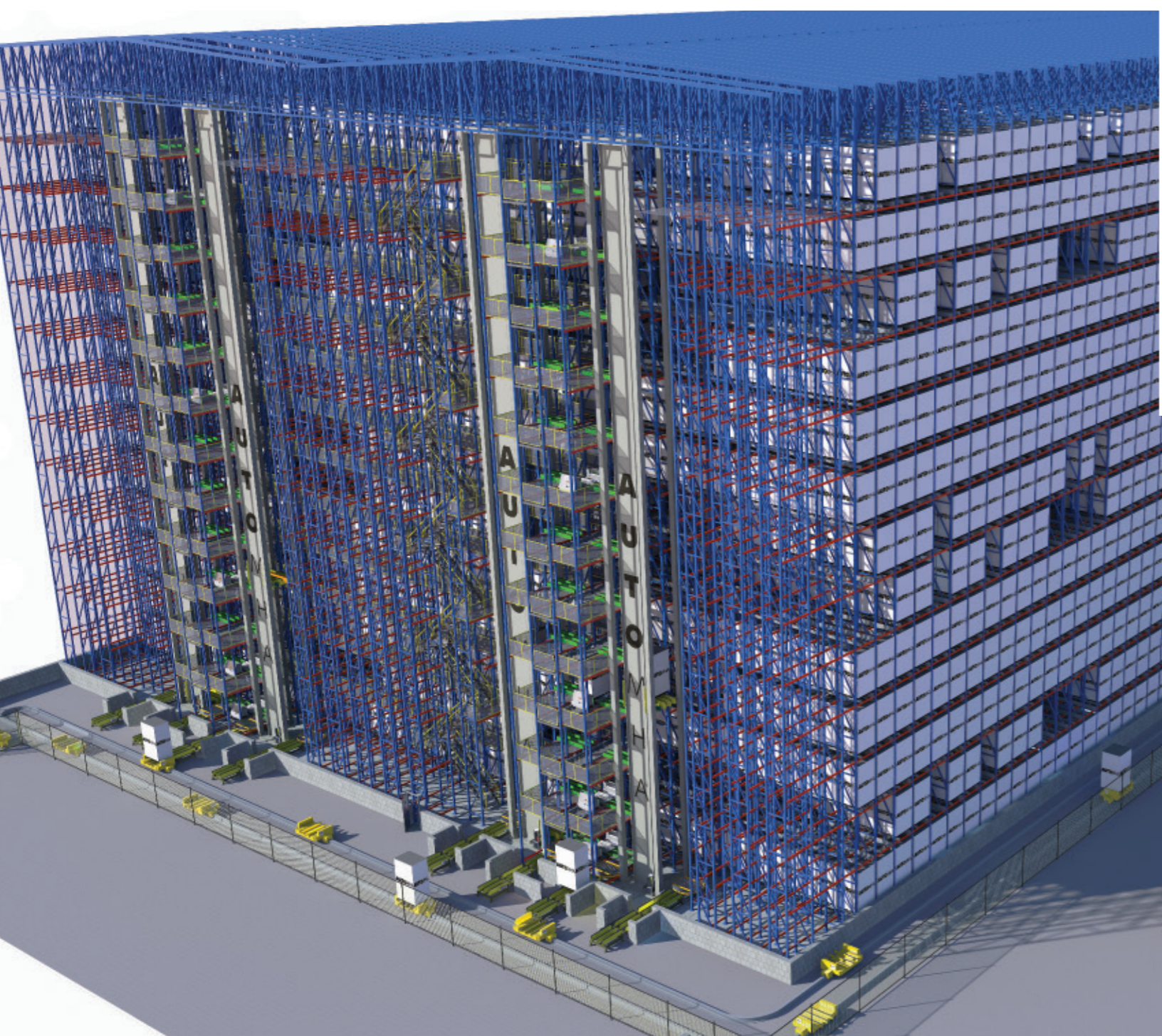
Just imagine a single 6 level module, with carts at every level, each cart bringing pallet loads to and from automated **LIFTERS**. Throughput from this single module can be more than what would be obtainable using 7 reach trucks. This could be accomplished automatically, in a single aisle, without using forklifts or operators! Add a second module and double your throughput again – without adding operators or trucks. This also can run 7 days a week, 24 hours per day if required.

We call it, "The Magic of Simultaneous Motion"

AUTOSATMOVER OFFERS:

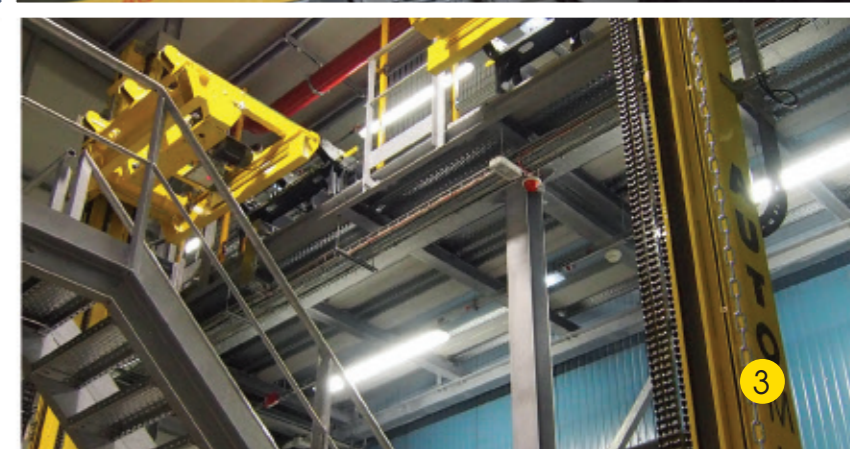
- Highest storage density available in automated systems
- Highest throughput potential available on 1, 2, or 3 shift operations
- Reduced labour/ forklifts
- Low maintenance costs
- Ease of maintenance with decking in every aisle at every level in system
- Systems are being installed from as little as 2 levels to 13 levels high
- Highly configurable for various load sizes and weights
- Highest energy efficiency
- **We Use No Batteries, No Hydraulics!**
- System can operate from -22° F to 113° F (-30° C to 45° C)
- Perfect for refrigerated warehouses – no operators in freezer
- System redundancy by utilizing multiple carts
- Modular configuration, additional modules can be added





AUTOSATMOVER
MODULES
 SYSTEM EXAMPLE

- 59,000 PALLET POSITIONS
- 13 LEVELS
- 135 FT. BUILDING



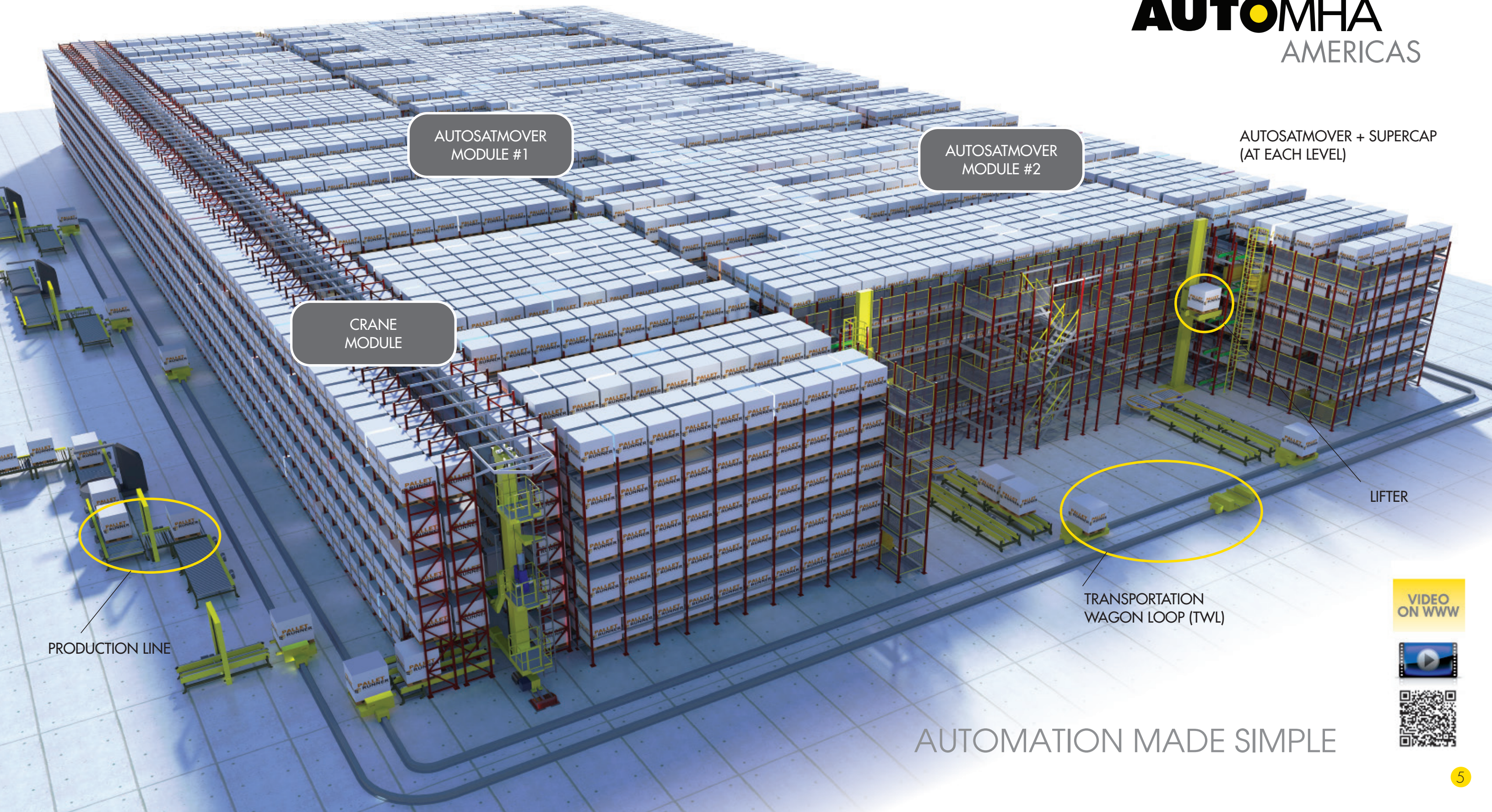
AUTOSATMOVER SYSTEM EXAMPLE

- 15,000 PALLET POSITIONS
- (1) CRANE MODULE
- (2) AUTOSATMOVER MODULES

The Magic of Simultaneous Motion

AUTOMHA

AMERICAS



AUTOSATMOVER
MODULE #1

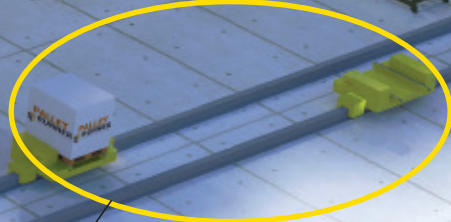
AUTOSATMOVER
MODULE #2

CRANE
MODULE

AUTOSATMOVER + SUPERCAP
(AT EACH LEVEL)



PRODUCTION LINE



TRANSPORTATION
WAGON LOOP (TWL)



LIFTER

VIDEO
ON WWW



AUTOMATION MADE SIMPLE

AUTOSATMOVER



CONNECTION TO POWER RAIL
Providing Direct Power From Panel

CHAIN DECK ON-BOARD

LOAD CENTERING SENSORS

LOAD LEAN SENSORS

GUIDE WHEELS
For Securing In Lane



SUPERCAP
Capacitor On-Board Receives "Boost" from Mover Cart Automatically

DUAL WHEELS

GUIDE ROLLERS
Locked Into "I" Beam

"Precision in Movement"

AUTOSATMOVER®

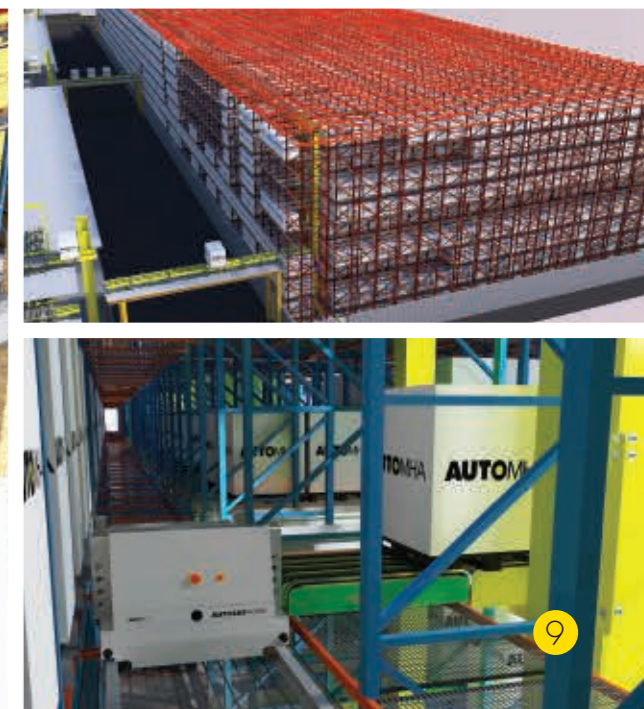
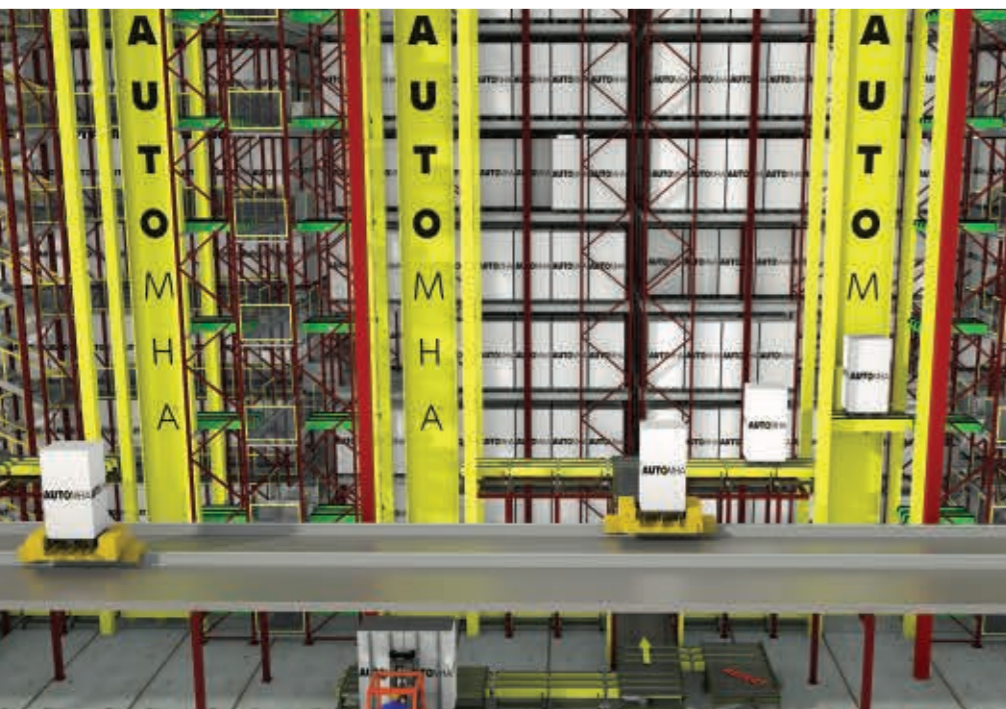
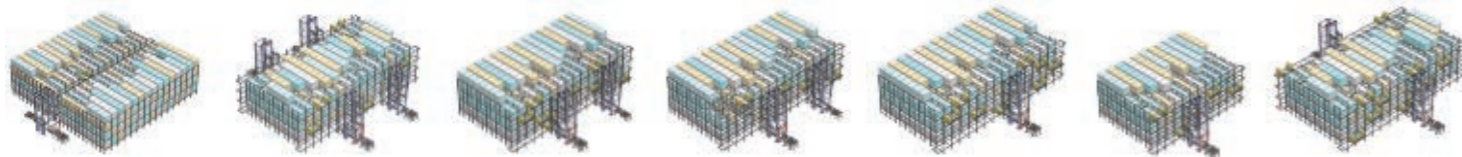
TYPICAL APPLICATIONS:

- Cold Storage Facilities
- Beverage Industry
- Consumer Goods Manufacturing
- Food Manufacturing/ Processing
- 3PL Suppliers
- Paper Products
- Pharmaceutical
- Dairy Products
- Personal Care Products
- Confectionery

PLUS COMPANIES WHO:

- Are "land locked" yet need to store more pallets
- Have high throughput and work multiple shifts
- Have high employee turnover or difficulty in hiring warehouse staff
- Have high product damage, rack & forklift damage
- Require better selectivity than drive-in, or higher density than push back
- Have inventory errors or warehouse data management issues

SYSTEM CONFIGURATIONS ARE DESIGNED FOR YOUR UNIQUE APPLICATION



AUTOSATMOVER CHARACTERISTICS:

SPEED	492 F.P.M. (150 M/MIN)
AUTOSATMOVER POWER SUPPLY	POWER BUS BAR
SUPERCAP POWER SUPPLY	SUPERCAPACITOR
WORKING TEMPERATURE	FROM -22°F TO 113°F (-30°C TO 45°C)
COLOUR	SILVER/ WHITE

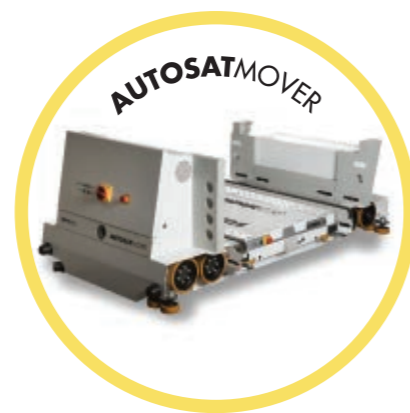
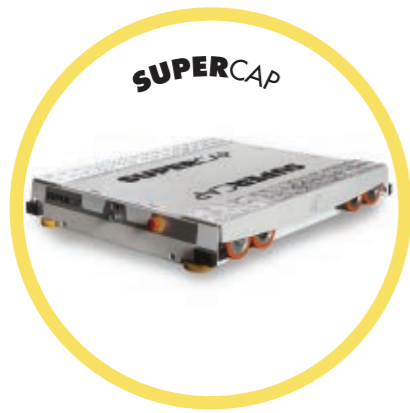
MODEL	CAPACITY MAX LBS	DEPTH PALLET INCHES	WIDTH FACE PALLET INCHES
MOV.0812	3307	31.5	48
MOV.1012	3307	40	48
MOV.1212	3307	48	48
MOV.4048	3307	40	48
MOV.4840	3307	48	40
MOV.3732	3307	37	32

Other custom sizes may be possible to handle different pallets as required (subject to engineering approval)

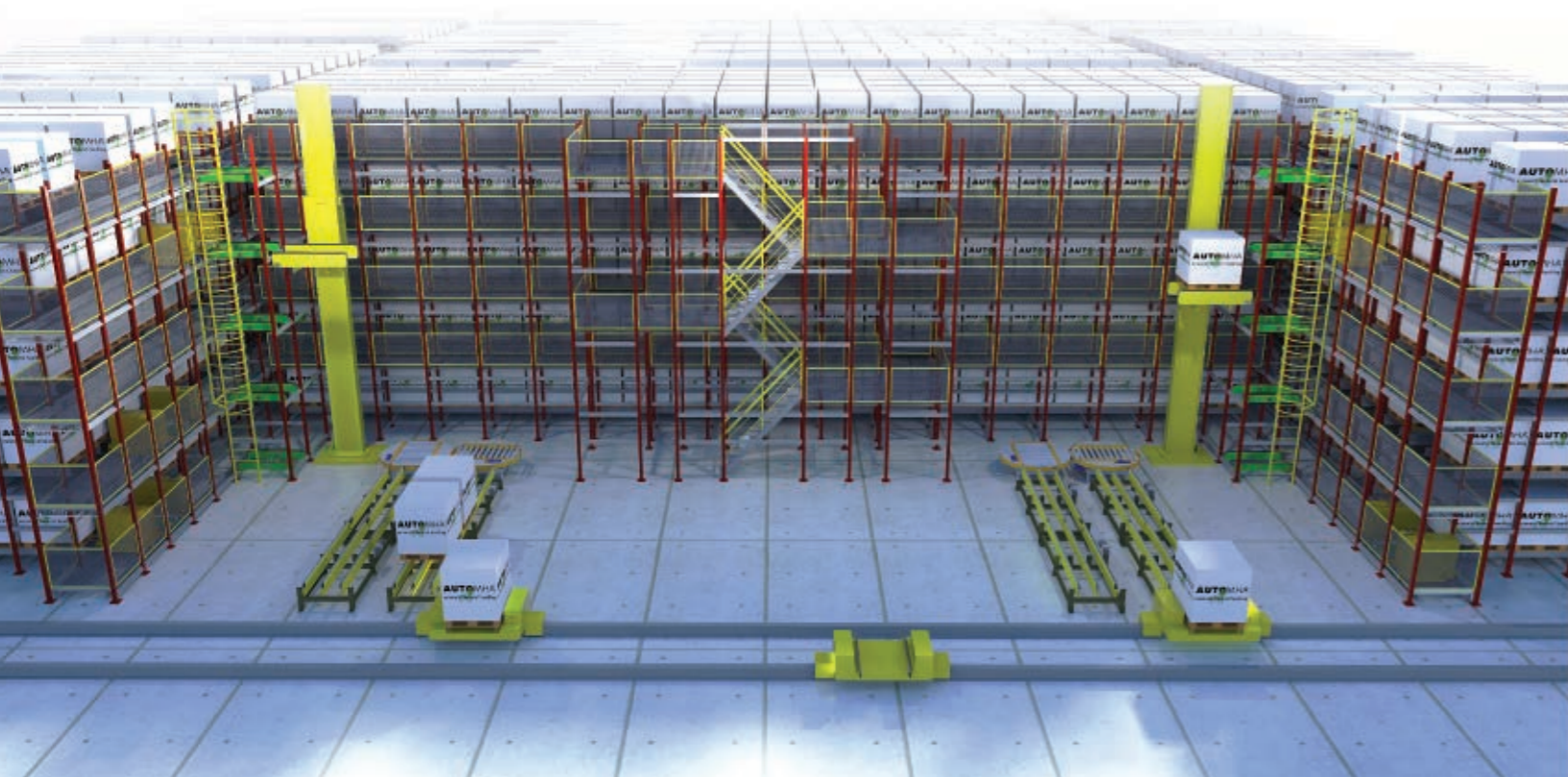
TECHNICAL INFORMATION

OPERATING & MAINTENANCE ADVANTAGES:

- No batteries to change/ charge/ water or replace
- No hydraulics
- Grated decking at every aisle level



WE **MANUFACTURE**
AUTOMATED
WAREHOUSES
ALWAYS
HAVE



AUTOSATMOVER IN FREEZERS?



-8

ABSOLUTELY the best deep lane system in the world for freezers!

-10

WHY?

-12

✓ No operators working in freezer

-14

✓ No forklifts working in freezer

✓ No batteries to change, water, charge, maintain or replace

✓ No hydraulics in freezer-no leaks normally inherent with freezer operations

-16

✓ No product, rack or truck damage as product is all automatically handled in freezer

✓ Extreme storage density available offering highest cube utilization known in automation today-dramatic reduction in building size is possible-less footprint to build, cool or maintain!

-18

✓ Highest throughput available-system can be designed to handle whatever is required

✓ Only require minimum door openings for pallets to enter and exit on conveyor - no large loss of cold air resulting from large doors

-20

✓ Operators only required to drop pallets off on inbound conveyor outside of freezer (or be brought to inbound by shuttle cart or conveyor automatically)

✓ All inventory/transactions/pallet storage and retrieval as well as report generation controlled by our resident AWM Software

✓ All product loads are automatically measured prior to entering freezer

-22

✓ AUTOSATMOVER is a very "GREEN" solution. System is extremely energy efficient and "Regenerative Braking" on the LIFTERS is available to put power expended in the lifting process back into the grid when the mast is lowered. Electrical cost of system will be far less than what would be spent on charging forklift batteries for comparable pallet moves



WHY **AUTOMHA**?

A family owned company with humble beginnings, our greatest strength is our people.

Recognizing an opportunity and knowing that he could do better, our founder began producing powered conveyors in his garage in 1979. Continuous innovation, excellence in engineering, market responsiveness and perseverance have driven the company forward ever since.

As the marketplace changes and technologies evolve we take advantage of every opportunity to improve our proven product platforms. We greet unique and complex challenges that others shy away from with determination to engineer and deliver a solution.

We are the world leader in cart based warehouse automation. We satisfy our clients' needs with the most appropriate, reliable and robust automation solutions available. We will provide the right solution for your requirement, at any level of automation.

Call us at 855-725-5786 You'll be glad you did.

AUTOMHA
AMERICAS

NOTES

TO DO LIST

CALL AUTOMHA
855-725-5786



AUTOMHACARE

AUTOMHACARE is the unique and exclusive service and after market support program for AUTOMHA. We have service locations in both Buffalo, NY and Oakville, Ontario. From these 2 locations, all of your service, support, replacement parts and warranty claims are recorded and handled by our **AUTOMHACARE** staff.

All clients are automatically enrolled into THE **AUTOMHACARE** PROGRAM and enjoy the following services and benefits:

- Parts inventory
- Typically, parts are shipped out next day air service
- AUTOSATMOVER repair service for more complex repairs
- Phone support
- Electronic support
- Preventative maintenance contracts
- Training and Education
- Testing of AUTOSATMOVER system with customers pallets/ product
- Support line for those questions you just want answered



AUTOMHA
AMERICAS

TECHNICAL SUPPORT LINE: 1-866-953-0366

E-MAIL: AUTOMHACARE@AUTOMHA.COM

INSTALLATIONS IN 50 COUNTRIES



We Manufacture Automated Warehouses
Around the World... ALWAYS Have.

**Every Stage
From Design To Production
Is Managed Directly By Us**

Design
Engineering
Project Management
Production
Installation
Commissioning
Testing And Start-up
Training
Monitoring
Service

NORTH AMERICA
MEXICO
LATIN AMERICA
ITALY
AFRICA
CHINA
INDIA

AUTOMHA AMERICAS

AUTOMHA AMERICAS
AUTOMATION CORP.

1300 South Service Rd. West
Oakville, Ontario, Canada, L6L 5T7

PH: 855-725-5786

E: AUTOSATMOVER@AUTOMHA.COM
WWW.AUTOMHA.COM

AUTOMATION MADE SIMPLE