

NEW SERIES FOR WINE

TWTA

MONOBLOCK UNITS

R513A

HUMIDITY & TEMPERATURE CONTROL



SWTAR
Evaporator Unit
Roof-Top



SWTA SPLIT SYSTEMS



Condensing Unit

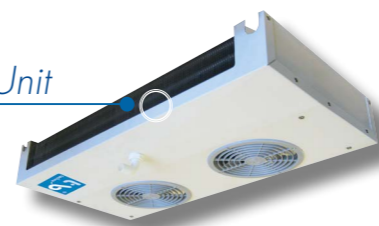
SWTAW
Evaporator Unit
Wall



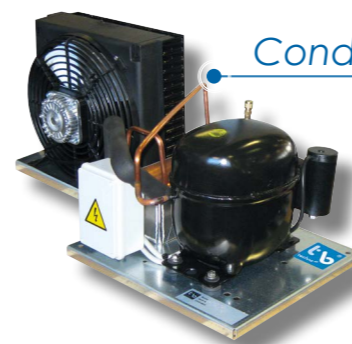
CUSTOMIZED UNITS ON REQUEST

Our Solutions

Evaporator Unit



Condensing Unit

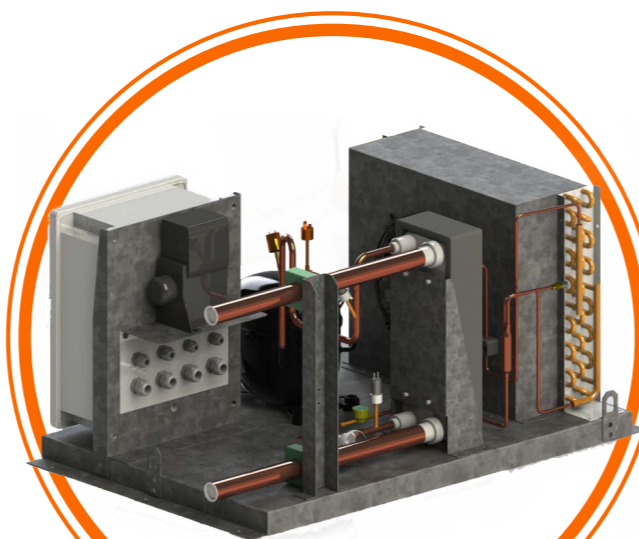


REFRIGERATED VENDING MACHINES FOR DRINK AND FOOD



MEDICAL VENDING MACHINES REFRIGERATED FOR PRODUCTS

SPECIAL UNITS



INDUSTRIAL APPLICATION



VENDING



TECHNO-B
REFRIGERATION SYSTEMS



R455A

LOW GWP

R290

NATURAL GAS

R448A

LOW GWP

R452A

R449A

LOW GWP

Italian excellence



Applicazione a **PARETE**
WALL mounting

TSD
WORKING TEMPERATURE
N B



TS
WORKING TEMPERATURE
N B



T
WORKING TEMPERATURE
Y N B



ASD
WORKING TEMPERATURE
N B



AS
WORKING TEMPERATURE
N B



A
WORKING TEMPERATURE
Y N B



TE OUTSIDE APPLICATION
WORKING TEMPERATURE
N B PLX



TI
WORKING TEMPERATURE
Y N B PLX FRZ



SE
WORKING TEMPERATURE
Y N B



S
WORKING TEMPERATURE
Y N B



Applicazione a **SOFFITTO**
ROOF-TOP mounting

P
WORKING TEMPERATURE
N B

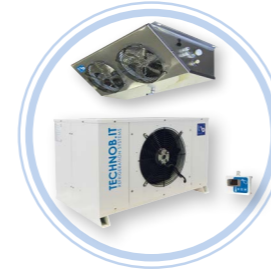


PS
WORKING TEMPERATURE
N B



Applicazione a **PAVIMENTO**
FLOOR mounting

SH
WORKING TEMPERATURE
N B



BH
WORKING TEMPERATURE
N B



OV
WORKING TEMPERATURE
Y N B PLX FRZ



BI
WORKING TEMPERATURE
Y N B PLX FRZ



GS
WORKING TEMPERATURE
N B



GSDF
WORKING TEMPERATURE
Y



UH
WORKING TEMPERATURE
N B



UC
WORKING TEMPERATURE
Y N B



UI
WORKING TEMPERATURE
Y N B PLX FRZ



US/USQ
WORKING TEMPERATURE
N B

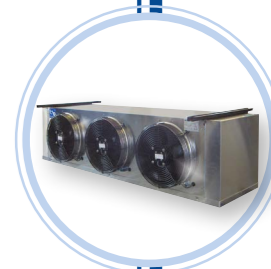


EVAPORATORI
EVAPORATORS

EVS



EVC



EVB



Unità **MULTICOMPRESSORE**
MULTICOMPRESSOR Units

CMMR-H
WORKING TEMPERATURE
N



CMMR-S
WORKING TEMPERATURE
Y N B



Legenda
Key words

Y	ALTA TEMPERATURA HIGH TEMPERATURE	+15 ÷ +5°C
N	MEDIA TEMPERATURA MEDIUM TEMPERATURE	+5 ÷ -5°C
B	BASSA TEMPERATURA LOW TEMPERATURE	-18 ÷ -25°C
PLX	POLIVALENTE TEMPERATURA POLYVALENT TEMPERATURE	+5 ÷ -5°C / -18 ÷ -25°C
FRZ	CONGELAMENTO TEMPERATURA POLYVALENT TEMPERATURE	-25 ÷ -45°C

