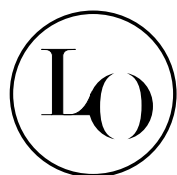


CLOCHE BOLLARD

design ALESSANDRO STABILE



LORELUX

LORELUX - CLOCHE BOLLARD DATASHEET



LORELUX - CLOCHE BOLLARD DATASHEET

Concept	Outdoor lamp collection consisting of an oblique lighting body and a vertical stem.
Description	<p>Cloche bollard reworks the original lines of the Cloche LED urban luminaire and synthesises them into a new miniature version, suitable for lighting pathways and gardens. Downward light emission ensures high visual comfort and high luminous efficacy. Its lighting body is made from innovative polymeric materials that respect urban ecology and resist corrosion, extreme temperatures (from - 60°C to + 80°C) and UV discolouration thanks to the innovative Rotoskin® patented system, the self-cleaning covering providing a protective shield on all exposed surfaces of the luminaire. Cloche offers a wide range of finishes and photometries, and is available in various heights, lending itself to composition in groups of luminaires to combine lighting and aesthetic results.</p>
Materials	<p>Head: mono-material (Vxxx finishes); 100% recyclable and PSV (Plastic Second Life) certified polyethylene (from 50 to 98% of post-consumer plastic content), anti-discolouration, UV stabilised and batch-dyed.</p> <p>Pole: extruded aluminium tube coated with polyester powder, with three-stage treatment to make the squaring resistant and durable.</p>

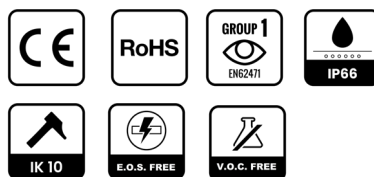
Product's preview



Pluses

- Lighting body's useful service life of over 50 years
- Immunity to corrosion by atmospheric agents and pollutants
- Resistance to impacts and vandalism
- No flaking or significant discolouration over time
- Interchangeable LED engine for upgrades and/or repairs
- Wide range of finishes from recycled polyethylene (PSV -Plastic Second Life- certified)

Product's certifications



Material's certifications



Application areas



Mountings

Post top
Code KM-CLOCHE-B

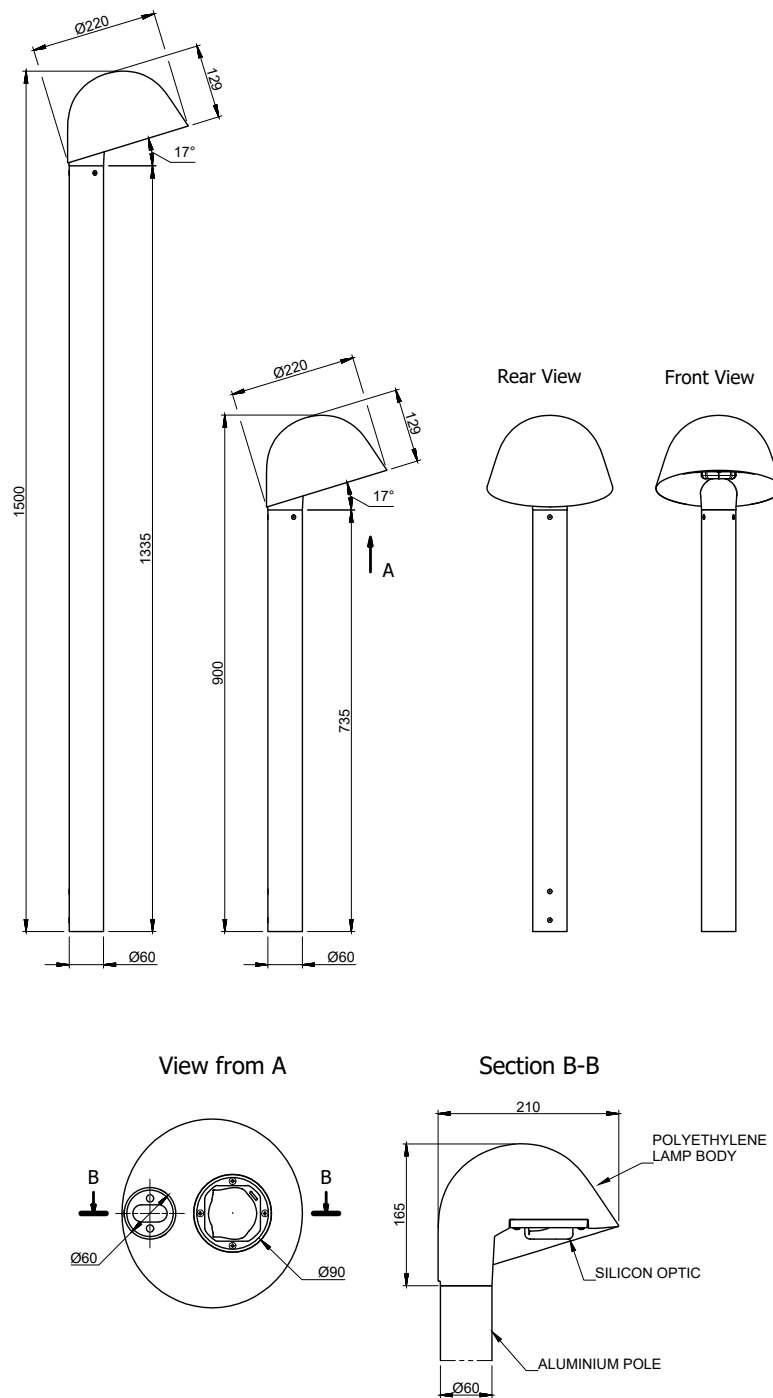


LORELUX - CLOCHE BOLLARD DATASHEET



LORELUX - CLOCHE BOLLARD DATASHEET

Technical drawing standard model CLOCHE BOLLARD



LORELUX - CLOCHE BOLLARD DATASHEET

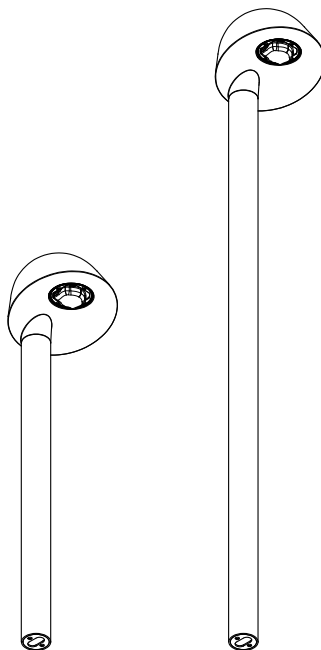
MAIN FEATURES

Manufacturer	NITEKO S.R.L.
Brand	LORELUX [®]
Series	CLOCHE BOLLARD
Device type	LED urban luminaire
Application areas	Urban and residential lighting Historic centres, squares, car parks and green areas Pedestrian areas and cycle lanes
Mounting	Post top CLOCHE BOLLARD
Mounting accessories	Standard: KM-CLOCHE-B-STD Optional: · KM-CLOCHE-B-FLANGE · KM-CLOCHE-P-TIE-ROD
Product's protection rating	External agents: IP66 Mechanical impacts: IK10 Chemical: VOC Free Electrical: EOS Free Photobiological: RG1
Material's protection rating: head	UV: 15 (15.000 h) Flame: HB Discolouration: max CMC 3 colour deviation for 3.000 h according to ISO 4892-2 B1 cycle
Temperature	Operating: -40°C ÷ +45°C (Control via N.T.C.) Storage: -40°C ÷ +80°C
Energy rating	>A++
Warranty	Body: 20 years Light source: 10 years
Certifications	Product: CE; RoHS; EOS free; VOC free; IEC/EN 62262 Material: UL94; ISO 4892-2; PSV (Plastic Second Life)
Optical compartment / Electric compartment	Separated Opening of the compartments after removal of the anti-fall fixing screws

LORELUX - CLOCHE BOLLARD DATASHEET

OPTICAL FEATURES

Light source	HI Power LED
LED modules	CoB
Optics	Independent and replaceable
Nominal luminous flux	1.698 lm
Light source efficiency	$\eta_{LED} > 165 \text{ lm/W}$ (CCT > 3.000 K / CRI > 80)



LORELUX - CLOCHE BOLLARD DATASHEET

Colour temperature	Standard CCT: 3.000K Optional CCT: 2.200K; 2.700K; 4.000K; 5.000K; 5.700K Colour stability: 3 Step MacAdam
Colour rendering index	Standard CRI: 80 Optional CRI: 90
Photometries	Asymmetric; rotosymmetric
Optical performance	Standard: η_{OPT} : 87 ÷ 90 %
Lighting fixture efficiency	η_{FIX} > 125 lm/W (CCT > 3.000 K / CRI > 80)
Light intensity class	$\geq G^*2$
Glare index	$\geq D.4$
ULR / ULOR	0,00%
Service life	L90 B10: > 100.000 h (TJ = 85 ° C IF \leq 500mA)

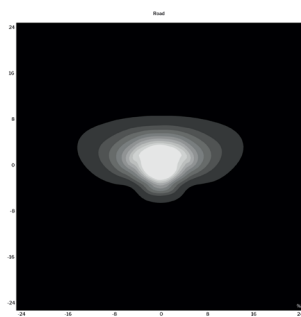
LORELUX - CLOCHE BOLLARD DATASHEET

CONFIGURATIONS

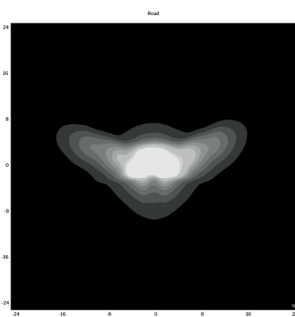
Model	Power [W]	Nominal luminous flux [lm]
		3.000 K CRI 80
CLOCHE BOLLARD	12	1.698

PHOTOMETRIES

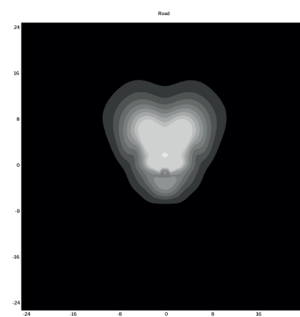
Asymmetric



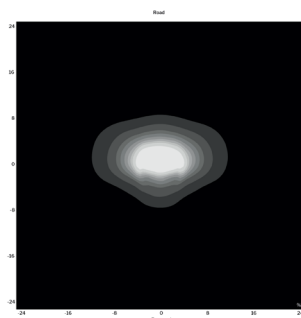
Code A1 ($\eta = 87\%$)



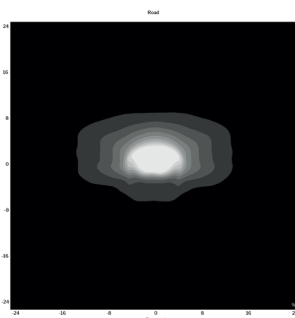
Code A2 ($\eta = 87\%$)



Code A3 ($\eta = 88\%$)

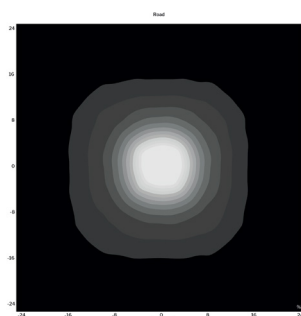


Code A4 ($\eta = 89\%$)



Code A5 ($\eta = 88\%$)

Rotosymmetric



Codice R1 ($\eta = 90\%$)

LORELUX - CLOCHE BOLLARD DATASHEET

ELECTRICAL FEATURES

Power supply	Standard 240V AC : 110 ÷ 277 V AC; 50 / 60 Hz
LED power current	$I_f \leq 500 \text{ mA}$
Insulation class	Standard: class II Optional: class I
Power	12W
Power factor	PF > 0,97 (Active PFC)
Electrical efficiency	$\eta_{EL} : 83 \div 92 \%$
Electrical connection	IP66 protected electrical connector)

CONTROL FEATURES

Control cable dimming	K-CLOCHE-DALI: DALI 2.0 digital control
------------------------------	---

LORELUX - CLOCHE BOLLARD DATASHEET

MECHANICAL FEATURES

Materials

Head: UV stabilised, self-cleaning, anti-discolouration and PSV (Plastic Second Life)-certified polyethylene, minimum thickness 3 mm

Pole: polyester powder-coated aluminium

Heat sink: die-cast aluminium

LED modules: aluminium

Optics: PMMA, PC

Gaskets: closed-cell silicone

Accessories: stainless steel/painted stainless steel

Screws: stainless steel

Packaging: FSC cardboard

Recycled plastic content

Black: 98%
Coloured: 50%

Service life

Body: >20 years
Components: >5 years

Dimensions and weight

Lighting body:
Ø 220 x h135 mm | 0,9 kg

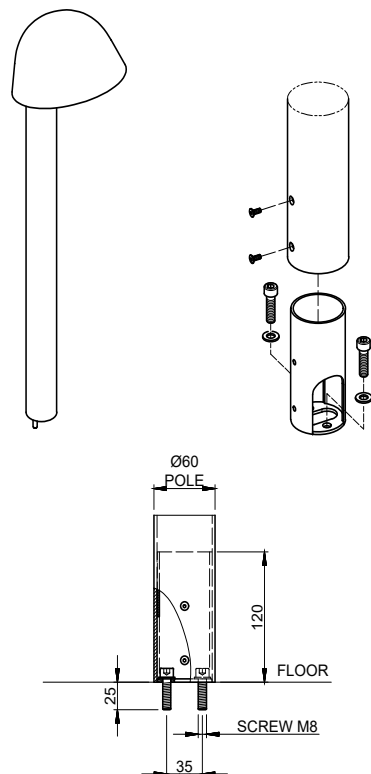
Pole:
Ø 60 x 900 mm | 1,6 kg
Ø 60 x 1.500 mm | 2,3 kg

Tolerance: luminous flux +/-5%; power consumption +/- 5%; dimensions +/-1%; weight +/-3%

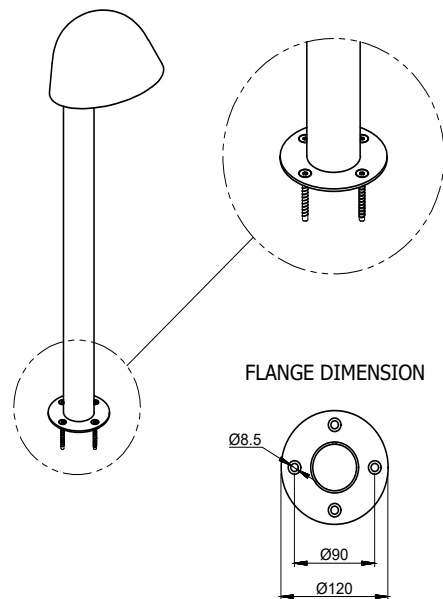
MOUNTING DIAGRAMS AND ACCESSORIES

Model: CLOCHE BOLLARD

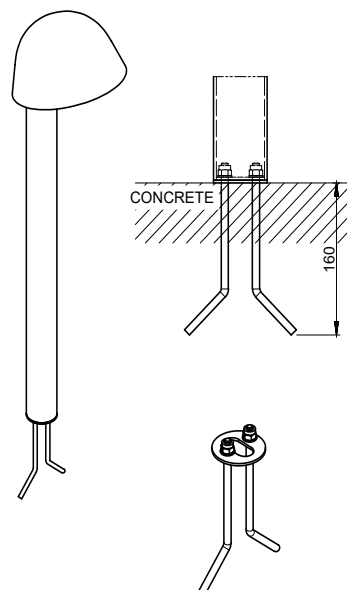
STANDARD MOUNTING ACCESSORY
KM-CLOCHE-B-STD



OPTIONAL MOUNTING ACCESSORY
KM-CLOCHE-B-FLANGE



OPTIONAL MOUNTING ACCESSORY
KM-CLOCHE-B-TIE-ROD



FINISHES

Batch-dyed colours



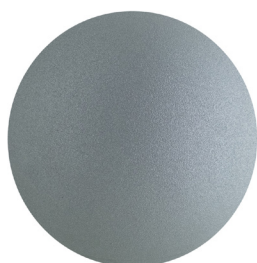
VBLK (graphite black)



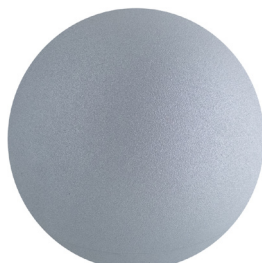
VNTH (anthracite)



VBZM (metallic bronze)



VGRM (metallic grey)



VGY1 (grey)



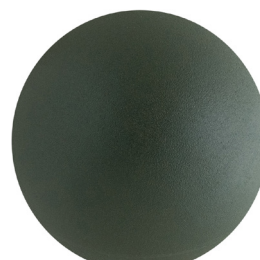
VWH1 (white)



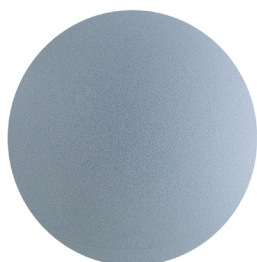
VCRT (marte)



VCR1 (venere)



VGRN (green)



VTQ1 (urano)