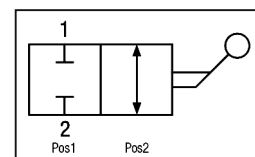


RUBINETTO A SFERA A 2 VIE

2-WAY BALL VALVE

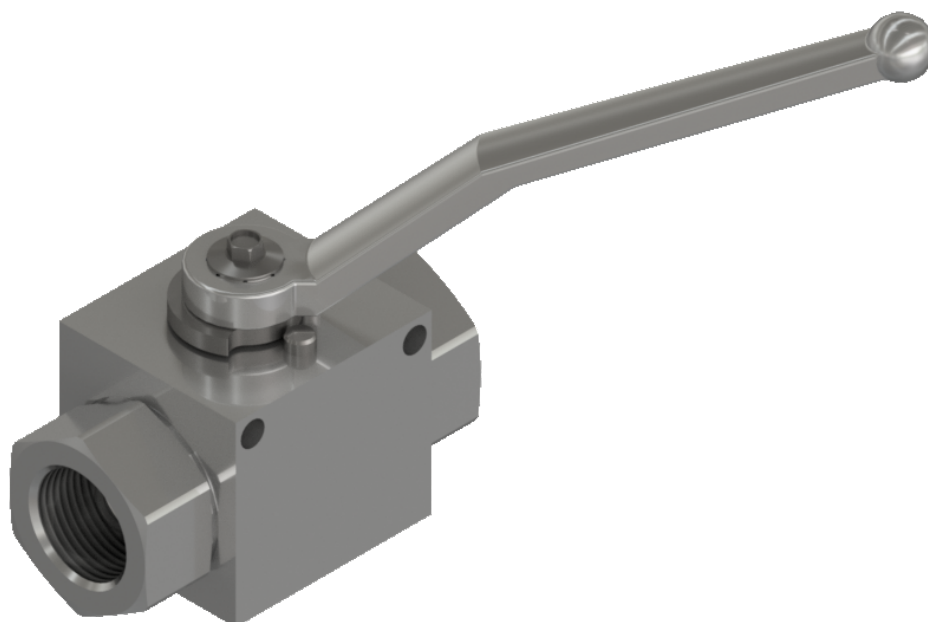
SCHEMA IDRAULICO
HYDRAULIC DIAGRAM



SERIE BSP e NPT

RUBINETTI A SFERA
BALL VALVES

RS2
BSP-NPT



APPLICAZIONE:

È utilizzato per aprire o chiudere il flusso dell'olio, anche alla massima pressione.

NOTE COSTRUTTIVE:

Corpo: acciaio zincato

Componenti interni: acciaio cromato e zincato

Leva: Zamak

Guarnizioni: Delrin

O-Ring: NBR

Temperatura d'esercizio max: -20°C / +80°C

Non ammettono trafilamento.

Ruotano in pressione.

MONTAGGIO e FUNZIONAMENTO:

Passaggio libero del flusso con la leva in posizione 2.

Flusso bloccato completamente con la leva in posizione 1.

Collegare indifferentemente le due uscite (1 e 2) al ramo da intercettare.

La leva ruota di 90°.

A RICHIESTA:

Leve speciali - Configurazioni speciali fuori standard

Guarnizioni speciali - Zincature e trattamenti speciali.

APPLICATION:

The use of this valve is to open or close the flow in the system, even under max pressure.

FEATURES:

Body: zinc-plated steel

Internal components: chromed and zinc-plated steel

Hand lever: Zamak

Seals: Delrin

O-Ring: NBR

Maximum operating temperature: -20°C / +80°C

It does not allow any leakage.

Rotation under pressure.

MOUNTING AND OPERATION:

Free flow passage with lever in position 2.

Closed flow passage with lever in position 1.

Connect indifferently the two ports (1 and 2) to where flow has to be intercepted.

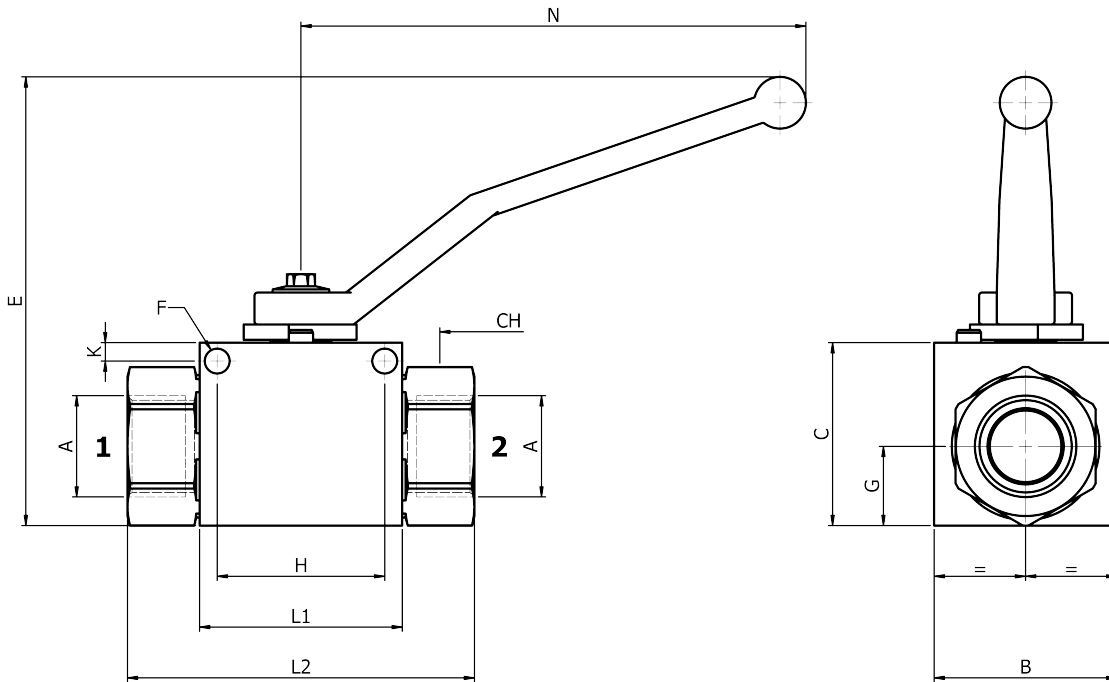
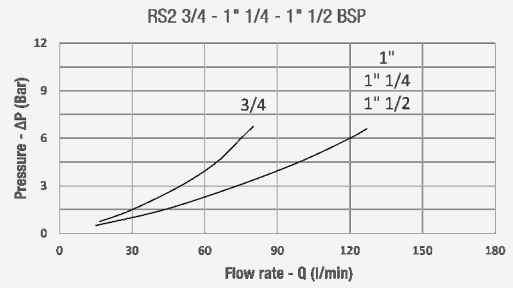
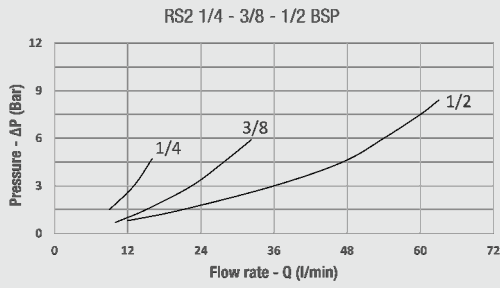
The lever rotates 90°.

UPON REQUEST:

Special levers - Special configurations out of the standard

Special gaskets - Special treatments.

PERDITE DI CARICO
PRESSURE DROPS CURVES



QUOTE / DIMENSIONS

TIPO / TYPE	A BSP	B	C	E	F	G	H	K	L1	L2	N	CH	PN (bar)	PESO WEIGHT kg
RS2 1/4	1/4	25	35	74	4,5	14,2	25	6	36	69	107	22	500	0,365
RS2 3/8	3/8	30	40	78	5	18,4	35	5	43	73	107	27	500	0,520
RS2 1/2	1/2	40	40	78	6	17,2	38	5	48	85	107	30	500	0,720
RS2 3/4	3/4	55	55	128	8	22,7	49	6	62,5	97	178	41	400	1,630
RS2 1"	1"	60	60	133	8	26	55	6	66,5	114	178	46	350	2,030
RS2 1" 1/4	1" 1/4	60	60	133	8	26	55	6	66,5	125	178	50	350	2,070
RS2 1" 1/2	1"1/2	60	60	133	8	26	55	6	66,5	125	178	55	350	2,110

CODICI / CODES

BSP

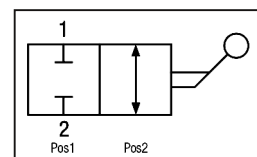
NPT

TIPO / TYPE	DN	BSP		NPT	
		Senza fori fissaggio Without fixing holes	Con fori fissaggio With fixing holes	Senza fori fissaggio Without fixing holes	Con fori fissaggio With fixing holes
CODICE / CODE	CODICE / CODE	CODICE / CODE	CODICE / CODE	CODICE / CODE	
RS2 1/4	6	525 1000 000	525 1100 000	525 1000 NPT	525 1100 NPT
RS2 3/8	10	525 2000 000	525 2100 000	525 2000 NPT	525 2100 NPT
RS2 1/2	13	525 3000 000	525 3100 000	525 3000 NPT	525 3100 NPT
RS2 3/4	20	525 4000 000	525 4100 000	525 4000 NPT	525 4100 NPT
RS2 1"	25	525 5000 000	525 5100 000	525 5000 NPT	525 5100 NPT
RS2 1" 1/4	25	525 6000 000	525 6100 000	525 6000 NPT	525 6100 NPT
RS2 1" 1/2	25	525 7000 000	525 7100 000	525 7000 NPT	525 7100 NPT

RUBINETTO A SFERA A 2 VIE

2-WAY BALL VALVE

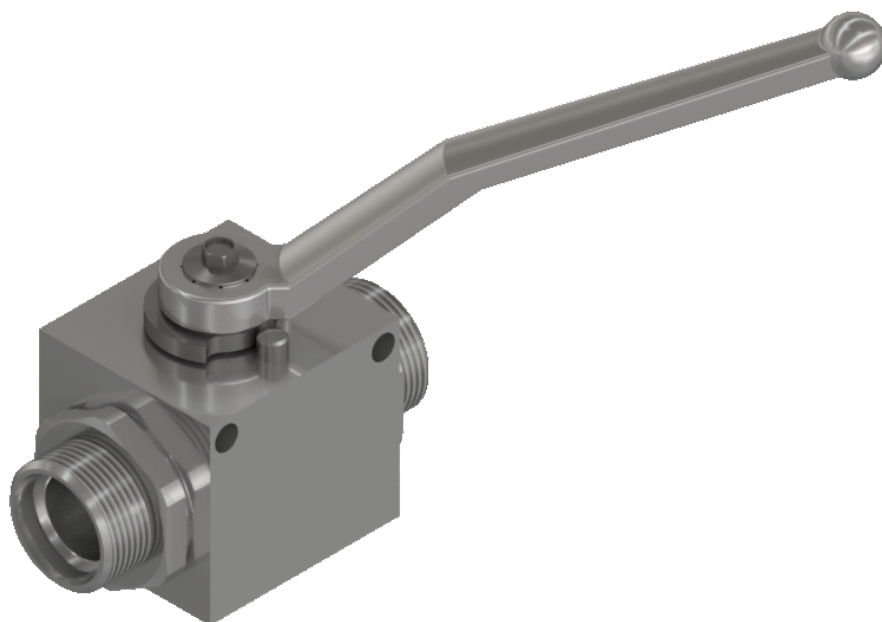
SCHEMA IDRAULICO
HYDRAULIC DIAGRAM



DIN 2353 SERIE "L"

RUBINETTI A SFERA
BALL VALVES

RS2/L
DIN 2353



APPLICAZIONE:

È utilizzato per aprire o chiudere il flusso dell'olio, anche alla massima pressione.

NOTE COSTRUTTIVE:

Corpo: acciaio zincato

Componenti interni: acciaio cromato e zincato

Leva: Zamak

Guarnizioni: Delrin

O-Ring: NBR

Temperatura d'esercizio max: -20°C / +80°C

Non ammettono trafilamento.

Ruotano in pressione.

MONTAGGIO e FUNZIONAMENTO:

Passaggio libero del flusso con la leva in posizione 2.

Flusso bloccato completamente con la leva in posizione 1.

Collegare indifferentemente le due uscite (1 e 2) al ramo da intercettare.

La leva ruota di 90°.

A RICHIESTA:

Leve speciali - Configurazioni speciali fuori standard

Guarnizioni speciali - Zincature e trattamenti speciali.

APPLICATION:

The use of this valve is to open or close the flow in the system, even under max pressure.

FEATURES:

Body: zinc-plated steel

Internal components: chromed and zinc-plated steel

Hand lever: Zamak

Seals: Delrin

O-Ring: NBR

Maximum operating temperature: -20°C / +80°C

It does not allow any leakage.

Rotation under pressure.

MOUNTING AND OPERATION:

Free flow passage with lever in position 2.

Closed flow passage with lever in position 1.

Connect indifferently the two ports (1 and 2) to where flow has to be intercepted.

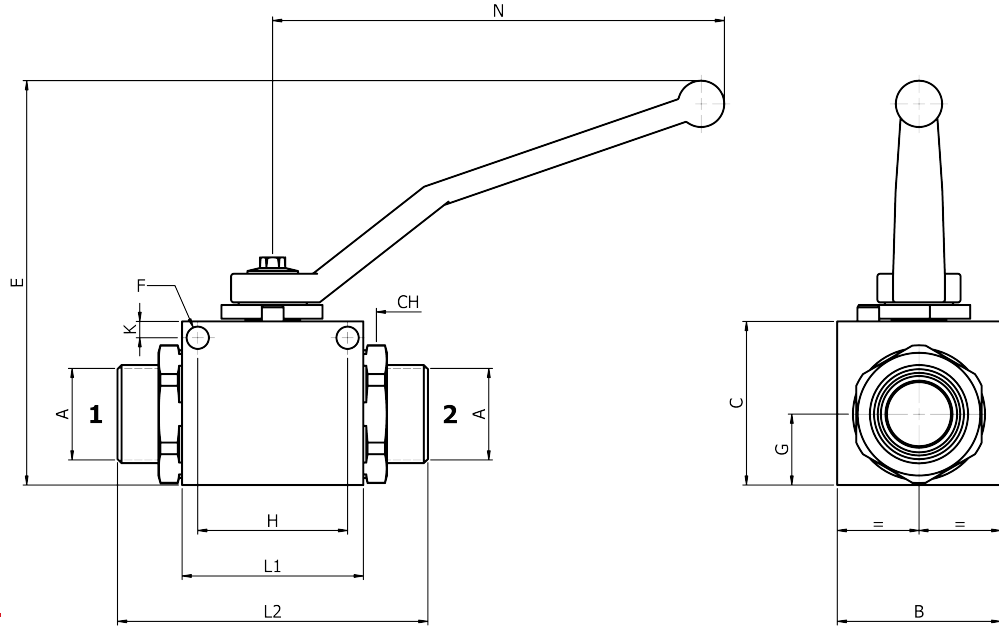
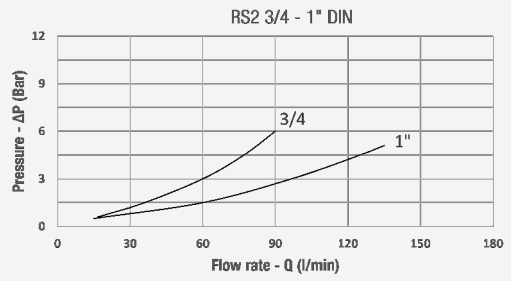
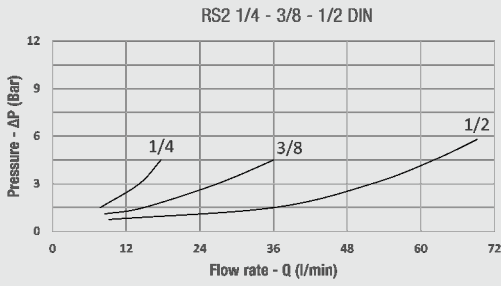
The lever rotates 90°.

UPON REQUEST:

Special levers - Special configurations out of the standard

Special gaskets - Special treatments.

PERDITE DI CARICO
PRESSURE DROPS CURVES



QUOTE / DIMENSIONS

TIPO / TYPE	A	B	C	E	F	G	H	K	L1	L2	N	CH	PN (bar)	PESO WEIGHT kg
RS2 1/4 6L	M12x1,5	25	35	74	4,5	14,2	25	6	36	67	107	22	500	0,350
RS2 1/4 8L	M14x1,5	25	35	74	4,5	14,2	25	6	36	69	107	22	500	0,350
RS2 1/4 10L	M16x1,5	25	35	74	4,5	14,2	25	6	36	69	107	22	500	0,350
RS2 3/8 12L	M18x1,5	30	40	78	5	18,4	35	5	43	76	107	27	500	0,490
RS2 3/8 15L	M22x1,5	30	40	78	5	18,4	35	5	43	78	107	27	500	0,490
RS2 1/2 12L	M18x1,5	40	40	78	6	17,2	38	5	48	81	107	30	500	0,670
RS2 1/2 15L	M22x1,5	40	40	78	6	17,2	38	5	48	84	107	30	500	0,670
RS2 1/2 18L	M26x1,5	40	40	78	6	17,2	38	5	48	84	107	30	500	0,670
RS2 3/4 22L	M30x2	55	55	128	8	22,7	49	6	62,5	103	178	41	400	1,550
RS2 1" 28L	M36x2	60	60	133	8	26	55	6	66,5	114	178	46	350	1,890
RS2 1" 35L	M45x2	60	60	133	8	26	55	6	66,5	114	178	46	350	2,000
RS2 1" 42L	M52x2	60	60	133	8	26	55	6	66,5	114	178	55	350	2,000

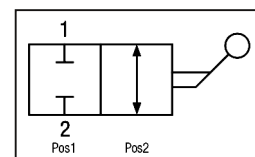
CODICI / CODES

TIPO / TYPE	DN	Senza fori fissaggio Without fixing holes		Con fori fissaggio With fixing holes	
		CODICE / CODE		CODICE / CODE	
RS2 1/4 6L	4	526 1010 000		526 1110 000	
RS2 1/4 8L	6	526 1020 000		526 1120 000	
RS2 1/4 10L	6	526 1030 000		526 1130 000	
RS2 3/8 12L	10	526 2020 000		526 2120 000	
RS2 3/8 15L	10	526 2030 000		526 2130 000	
RS2 1/2 12L	13	526 3010 000		526 3110 000	
RS2 1/2 15L	13	526 3020 000		526 3120 000	
RS2 1/2 18L	13	526 3030 000		526 3130 000	
RS2 3/4 22L	20	526 4010 000		526 4110 000	
RS2 1" 28L	25	526 5020 000		526 5120 000	
RS2 1" 35L	25	526 5040 000		526 5140 000	
RS2 1" 42L	25	526 5060 000		526 5160 000	

RUBINETTO A SFERA A 2 VIE

2-WAY BALL VALVE

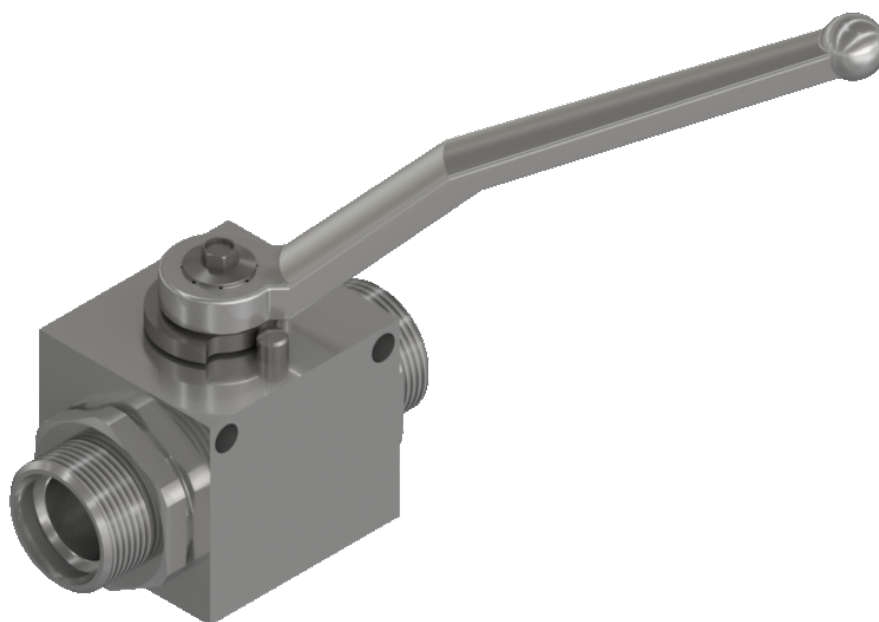
SCHEMA IDRAULICO
HYDRAULIC DIAGRAM



DIN 2353 SERIE "S"

RUBINETTI A SFERA
BALL VALVES

RS2/S
DIN 2353



APPLICAZIONE:

È utilizzato per aprire o chiudere il flusso dell'olio, anche alla massima pressione.

NOTE COSTRUTTIVE:

Corpo: acciaio zincato
Componenti interni: acciaio cromato e zincato
Leva: Zamak
Guarnizioni: Delrin
O-Ring: NBR
Temperatura d'esercizio max: -20°C / +80°C
Non ammettono trafilamento.
Ruotano in pressione.

MONTAGGIO e FUNZIONAMENTO:

Passaggio libero del flusso con la leva in posizione 2.
Flusso bloccato completamente con la leva in posizione 1.
Collegare indifferentemente le due uscite (1 e 2) al ramo da intercettare.
La leva ruota di 90°.

A RICHIESTA:

Leve speciali - Configurazioni speciali fuori standard
Guarnizioni speciali - Zincature e trattamenti speciali.

APPLICATION:

The use of this valve is to open or close the flow in the system, even under max pressure.

FEATURES:

Body: zinc-plated steel
Internal components: chromed and zinc-plated steel
Hand lever: Zamak
Seals: Delrin
O-Ring: NBR
Maximum operating temperature: -20°C / +80°C
It does not allow any leakage.
Rotation under pressure.

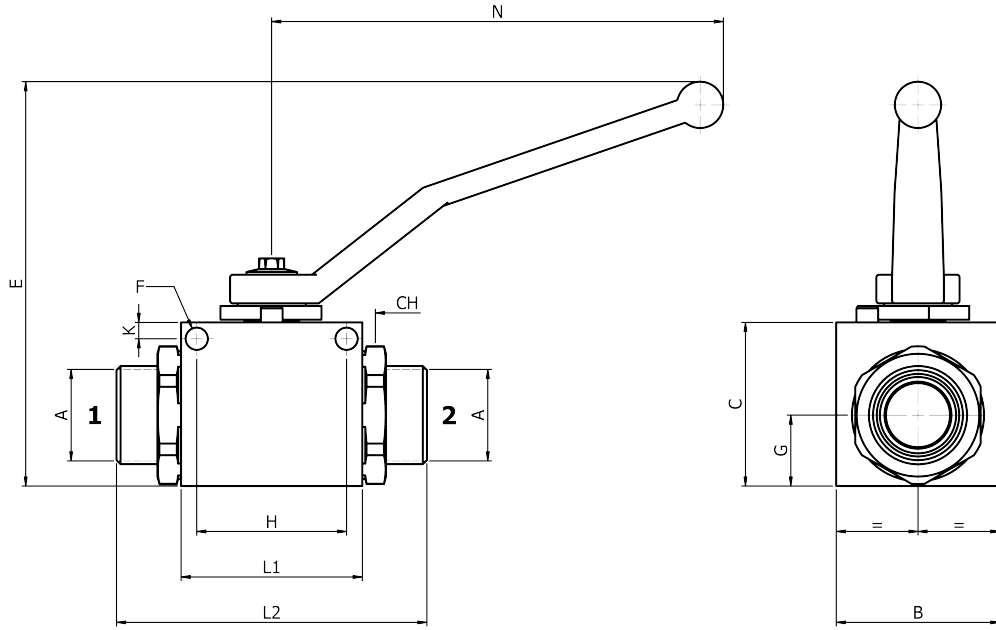
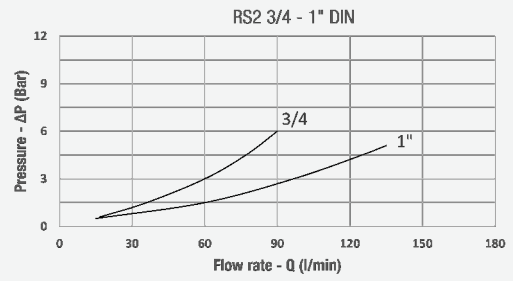
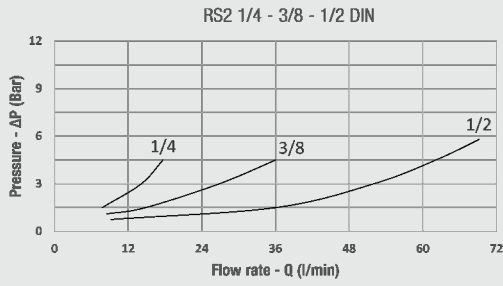
MOUNTING AND OPERATION:

Free flow passage with lever in position 2.
Closed flow passage with lever in position 1.
Connect indifferently the two ports (1 and 2) to where flow has to be intercepted.
The lever rotates 90°.

UPON REQUEST:

Special levers - Special configurations out of the standard
Special gaskets - Special treatments.

PERDITE DI CARICO
PRESSURE DROPS CURVES



QUOTE / DIMENSIONS

TIPO / TYPE	A	B	C	E	F	G	H	K	L1	L2	N	CH	PN (bar)	PESO WEIGHT kg
RS2 1/4 8S	M16X1,5	25	35	74	4,5	14,2	25	6	36	71	107	22	500	0,350
RS2 1/4 10S	M18x1,5	25	35	74	4,5	14,2	25	6	36	67	107	22	500	0,350
RS2 1/4 12S	M20x1,5	25	35	74	4,5	14,2	25	6	36	67	107	22	500	0,350
RS2 3/8 10S	M18x1,5	30	40	78	5	18,4	35	5	43	76	107	27	500	0,490
RS2 3/8 14S	M22x1,5	30	40	78	5	18,4	35	5	43	82	107	27	500	0,490
RS2 3/8 16S	M24x1,5	40	40	78	5	18,4	35	5	43	82	107	27	500	0,490
RS2 1/2 20S	M30x2	40	40	78	6	17,2	38	5	48	91	107	30	500	0,730
RS2 3/4 25S	M36x2	55	55	128	8	22,7	49	6	62,5	111	178	41	400	1,550
RS2 1" 30S	M42x2	60	60	133	8	26	55	6	66,5	121	178	46	350	2,000
RS2 1" 38S	M52x2	60	60	133	8	26	55	6	66,5	126	178	55	350	2,000

CODICI / CODES

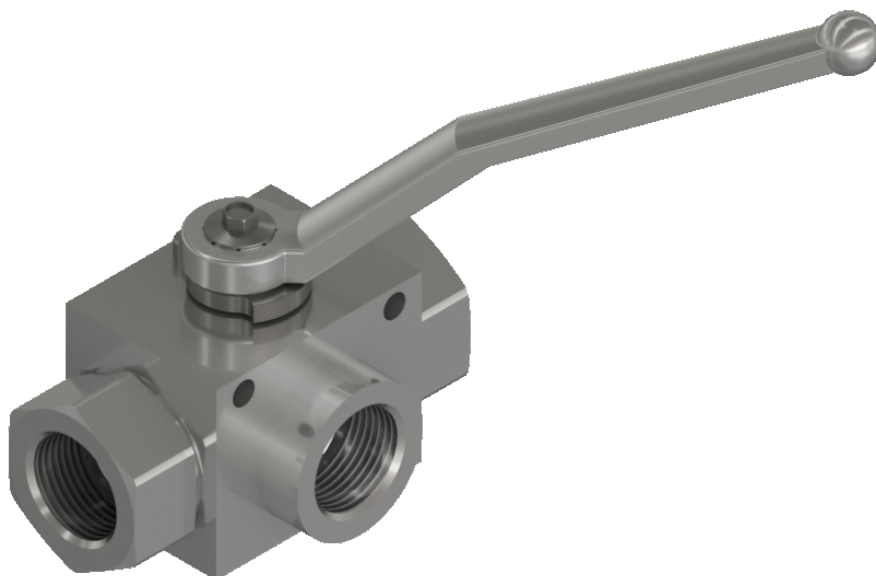
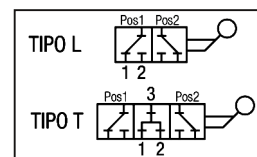
TIPO / TYPE	DN	Senza fori fissaggio Without fixing holes		Con fori fissaggio With fixing holes	
		CODICE / CODE		CODICE / CODE	
RS2 1/4 8S	6	526 1060 000		526 1160 000	
RS2 1/4 10S	6	526 1050 000		526 1150 000	
RS2 1/4 12S	6	526 1040 000		526 1140 000	
RS2 3/8 10S	10	526 2060 000		526 2160 000	
RS2 3/8 14S	10	526 2040 000		526 2140 000	
RS2 3/8 16S	10	526 2050 000		526 2150 000	
RS2 1/2 20S	13	526 3040 000		526 3140 000	
RS2 3/4 25S	20	526 4020 000		526 4120 000	
RS2 1" 30S	25	526 5030 000		526 5130 000	
RS2 1" 38S	25	526 5050 000		526 5150 000	

RUBINETTO A SFERA A 3 VIE

3-WAY BALL VALVE

SERIE BSP-NPT

SCHEMA IDRAULICO
HYDRAULIC DIAGRAM



APPLICAZIONE:

È utilizzato per deviare il flusso da una sola entrata a due uscite alterne (schema L) o a due uscite continue (schema T).

NOTE COSTRUTTIVE:

Corpo: acciaio zincato
Componenti interni: acciaio zincato e cromato
Leva: Zamak
Guarnizioni: Delrin
O-Ring: NBR
Temperatura d'esercizio max: -20°C / +80°C
Fori di fissaggio.
Non ammette trafileamenti.
Non accetta contropressioni sulla bocca chiusa.
Ruota in pressione.

MONTAGGIO e FUNZIONAMENTO:

Tipo "L" (centro chiuso): con la leva in posizione centrale tutte le tre uscite sono parzialmente chiuse. La leva ruota di 90°.
Tipo "T" (centro aperto): con la leva in posizione centrale tutte le tre uscite sono completamente aperte. La leva ruota di 180°.
Leva in posizione 1 si alimenta l'uscita A.
Leva in posizione 2 si alimenta l'uscita B.

A RICHIESTA:

Leve speciali - Configurazioni speciali fuori standard
Guarnizioni speciali - Zincature e trattamenti speciali.

APPLICATION:

The use of this valve is to divert the flow from a single input to two alternate ports (L scheme) or to two continuous ports (T scheme).

FEATURES:

Body: zinc-plated steel
Internal components: zinc-plated and chromed steel
Hand lever: Zamak
Seals: Delrin
O-Ring: NBR
Maximum operating temperature: -20°C / +80°C
Fixing holes.
It does not allow any leakage.
It does not accept pressure on the closed port.
Rotation under pressure.

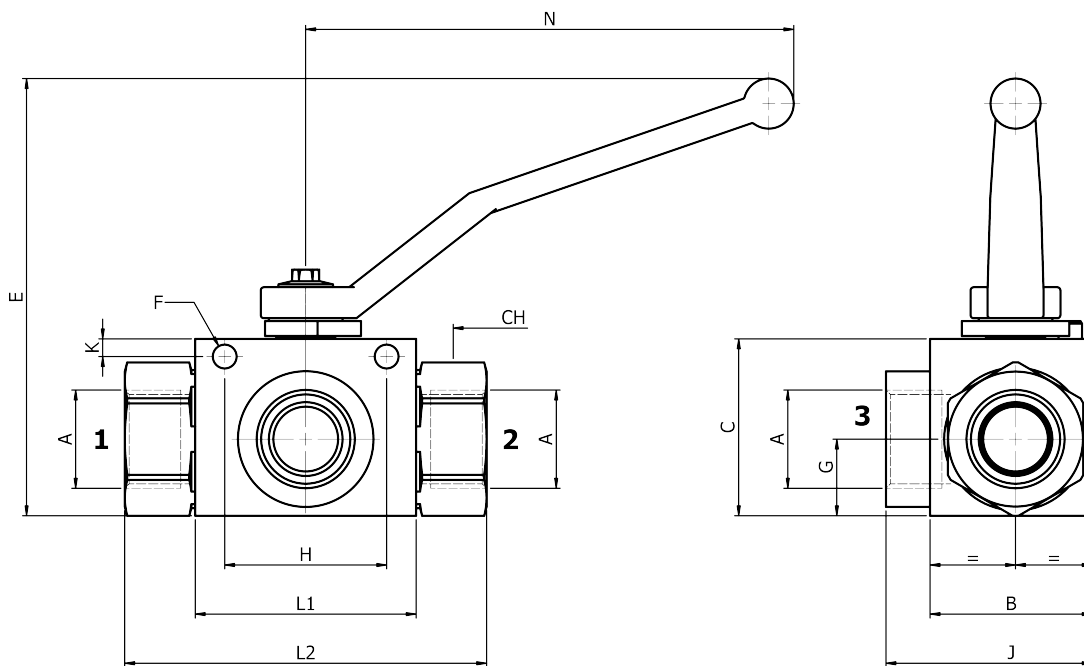
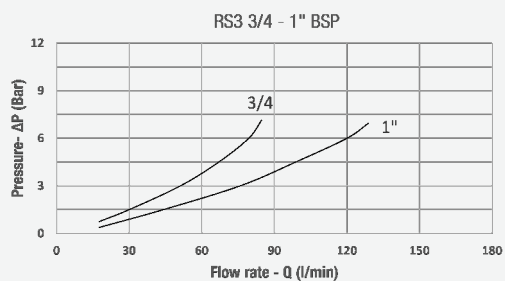
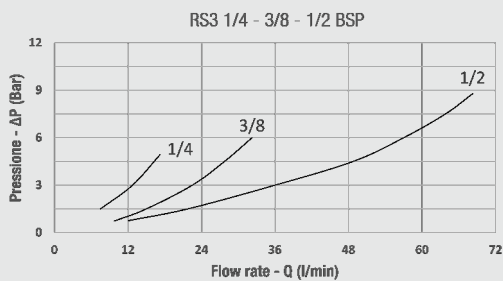
MOUNTING AND OPERATION:

"L" Type (closed center): with the lever in central position, the three ports are partially closed. The lever turns 90° only.
"T" Type (open center): with the lever in the central position, the three ports are completely open. The lever turns 180°.
Lever in position 1 allows flow to A port.
Lever in position 2 allows flow to B port.

UPON REQUEST:

Special levers - Special configurations out of the standard
Special gaskets - Special treatments.

PERDITE DI CARICO
PRESSURE DROPS CURVES



QUOTE / DIMENSIONS

TIPO / TYPE	A BSP	B	C	E	F	G	H	J	K	L1	L2	N	CH	PN (bar)	PESO WEIGHT kg
RS3 1/4	1/4	28	40	78	4,5	19,2	25	40	7	36	69	107	22	500	0,430
RS3 3/8	3/8	30	45	83	5	23,4	35	45	5	43	72	107	27	500	0,610
RS3 1/2	1/2	40	40	78	6	17,2	38	50	5	48	85	107	30	500	0,710
RS3 3/4	3/4	55	65	139	8	32,7	49	65	6	63	97	178	41	400	1,770
RS3 1"	1"	55	70	144	8	36	55	70	6	67	114	178	46	350	1,900
RS3 1" 1/4	1" 1/4	55	70	144	8	26	55	70	6	67	125	178	50	350	1,940
RS3 1" 1/2	1" 1/2	55	70	144	8	26	55	70	6	67	125	178	55	350	2,270

CODICI / CODES

TIPO / TYPE	DN
RS3 1/4	6
RS3 3/8	10
RS3 1/2	13
RS3 3/4	20
RS3 1"	25
RS3 1" 1/4	25
RS3 1" 1/2	25

Con fori fissaggio - Sfera a "L"
With fixing holes - "L" ball scheme

CODICE / CODE
530 1110 000
530 2110 000
530 3110 000
530 4110 000
530 5110 000
530 6110 000
530 7110 000

Con fori fissaggio - Sfera a "T"
With fixing holes - "T" ball scheme

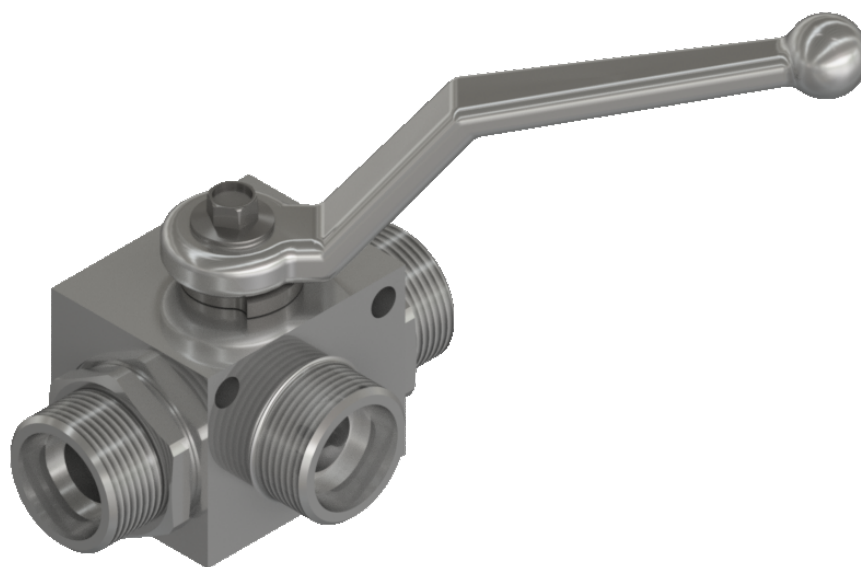
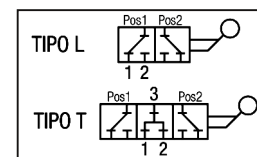
CODICE / CODE
530 1100 000
530 2100 000
530 3100 000
530 4100 000
530 5100 000
530 6100 000
530 7100 000

RUBINETTO A SFERA A 3 VIE

3-WAY BALL VALVE

DIN 2353 SERIE "L"

SCHEMA IDRAULICO
HYDRAULIC DIAGRAM



APPLICAZIONE:

È utilizzato per deviare il flusso da una sola entrata a due uscite alterne (schema L) o a due uscite continue (schema T).

NOTE COSTRUTTIVE:

Corpo: acciaio zincato
Componenti interni: acciaio zincato e cromato
Leva: Zamak
Guarnizioni: Delrin
O-Ring: NBR
Temperatura d'esercizio max: -20°C / +80°C
Fori di fissaggio.
Non ammette trafileamenti.
Non accetta contropressioni sulla bocca chiusa.
Ruota in pressione.

MONTAGGIO e FUNZIONAMENTO:

Tipo "L" (centro chiuso): con la leva in posizione centrale tutte le tre uscite sono parzialmente chiuse. La leva ruota di 90°.
Tipo "T" (centro aperto): con la leva in posizione centrale tutte le tre uscite sono completamente aperte. La leva ruota di 180°.
Leva in posizione 1 si alimenta l'uscita A.
Leva in posizione 2 si alimenta l'uscita B.

A RICHIESTA:

Leve speciali - Configurazioni speciali fuori standard
Guarnizioni speciali - Zincature e trattamenti speciali.

APPLICATION:

The use of this valve is to divert the flow from a single input to two alternate ports (L scheme) or to two continuous ports (T scheme).

FEATURES:

Body: zinc-plated steel
Internal components: zinc-plated and chromed steel
Hand lever: Zamak
Seals: Delrin
O-Ring: NBR
Maximum operating temperature: -20°C / +80°C
Fixing holes.
It does not allow any leakage.
It does not accept pressure on the closed port.
Rotation under pressure.

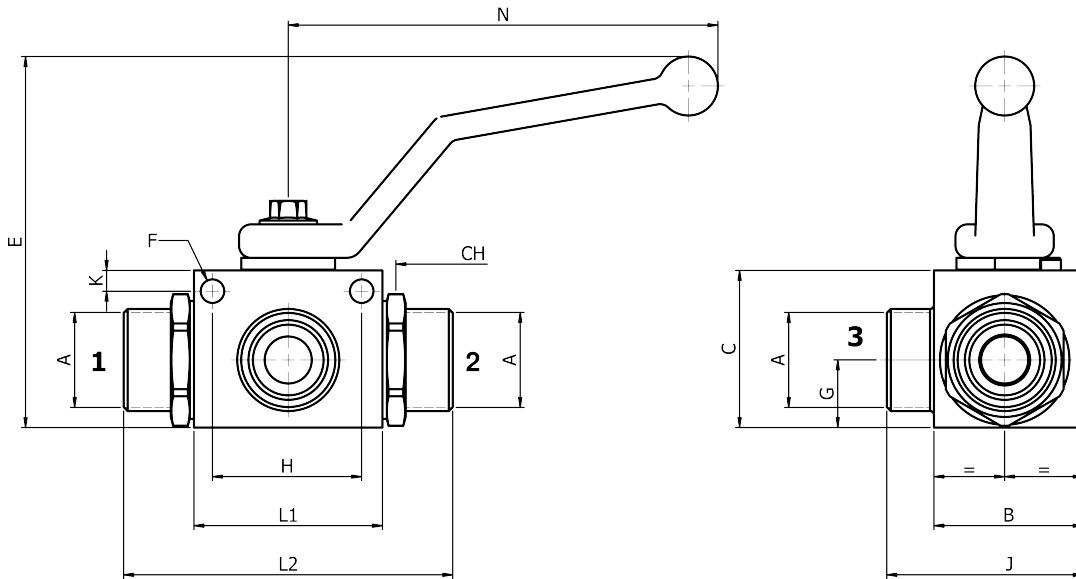
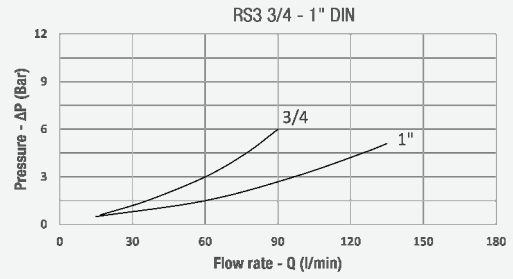
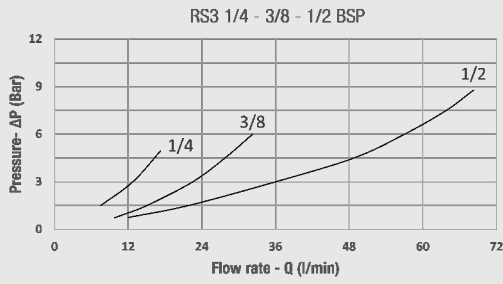
MOUNTING AND OPERATION:

"L" Type (closed center): with the lever in central position, the three ports are partially closed. The lever turns 90° only.
"T" Type (open center): with the lever in the central position, the three ports are completely open. The lever turns 180°.
Lever in position 1 allows flow to A port.
Lever in position 2 allows flow to B port.

UPON REQUEST:

Special levers - Special configurations out of the standard
Special gaskets - Special treatments.

PERDITE DI CARICO
PRESSURE DROPS CURVES



QUOTE / DIMENSIONS

TIPO / TYPE	A	B	C	E	F	G	H	J	K	L1	L2	N	CH	PN (bar)	PESO WEIGHT kg
RS3 1/4 6L	M12x1,5	25	40	78	4,5	19,2	25	37	7	36	67	107	22	500	0,380
RS3 1/4 8L	M14x1,5	25	40	78	4,5	19,2	25	40	7	36	69	107	22	500	0,380
RS3 1/4 10L	M16x1,5	25	40	78	4,5	19,2	25	40	7	36	69	107	22	500	0,380
RS3 3/8 12L	M18x1,5	30	45	83	5	23,4	35	45	5	43	76	107	27	500	0,550
RS3 1/2 15L	M22x1,5	38	40	78	6	17,2	38	50	5	48	84	107	30	500	0,700
RS3 1/2 18L	M26x1,5	38	40	78	6	17,2	38	50	5	48	84	107	30	500	0,700
RS3 3/4 22L	M30x2	65	65	139	8	32,7	49	85,5	6	63	103	178	41	400	1,610
RS3 1" 28L	M36x2	70	70	144	8	26	55	93,5	6	67	114	178	46	350	1,750
RS3 1" 35L	M45x2	70	70	144	8	26	55	93,5	6	67	114	178	46	350	1,820
RS3 1" 42L	M52x2	70	70	144	8	26	55	93,5	6	67	114	178	55	350	1,820

CODICI / CODES

TIPO / TYPE	DN
RS3 1/4 6L	4
RS3 1/4 8L	6
RS3 1/4 10L	6
RS3 3/8 12L	10
RS3 1/2 15L	13
RS3 1/2 18L	13
RS3 3/4 22L	20
RS3 1" 28L	25
RS3 1" 35L	25
RS3 1" 42L	25

Con fori fissaggio - sfera a "L"
With fixing holes - "L" ball scheme

CODICE / CODE
536 1111 000
536 1121 000
536 1131 000
536 2121 000
536 3121 000
536 3131 000
536 4111 000
536 5121 000
536 5141 000
536 5161 000

Con fori fissaggio - sfera a "T"
With fixing holes - "T" ball scheme

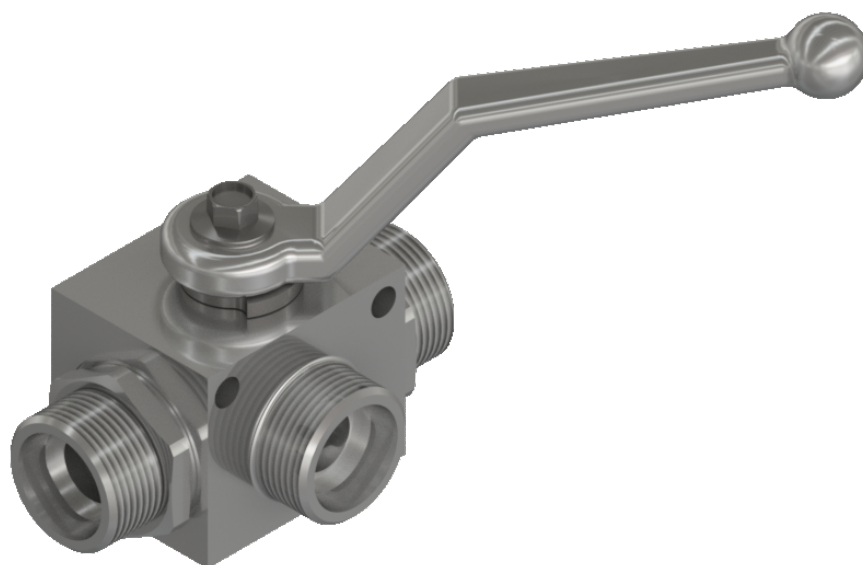
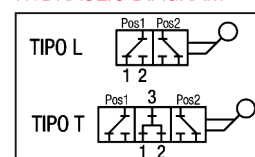
CODICE / CODE
536 1110 000
536 1120 000
536 1130 000
536 2120 000
536 3120 000
536 3130 000
536 4110 000
536 5120 000
536 5140 000
536 5160 000

RUBINETTO A SFERA A 3 VIE

3-WAY BALL VALVE

DIN 2353 SERIE "S"

SCHEMA IDRAULICO
HYDRAULIC DIAGRAM



APPLICAZIONE:

È utilizzato per deviare il flusso da una sola entrata a due uscite alterne (schema L) o a due uscite continue (schema T).

NOTE COSTRUTTIVE:

Corpo: acciaio zincato
Componenti interni: acciaio zincato e cromato
Leva: Zamak
Guarnizioni: Delrin
O-Ring: NBR
Temperatura d'esercizio max: -20°C / +80°C
Fori di fissaggio.
Non ammette trafileamenti.
Non accetta contropressioni sulla bocca chiusa.
Ruota in pressione.

MONTAGGIO e FUNZIONAMENTO:

Tipo "L" (centro chiuso): con la leva in posizione centrale tutte le tre uscite sono parzialmente chiuse. La leva ruota di 90°.
Tipo "T" (centro aperto): con la leva in posizione centrale tutte le tre uscite sono completamente aperte. La leva ruota di 180°.
Leva in posizione 1 si alimenta l'uscita A.
Leva in posizione 2 si alimenta l'uscita B.

A RICHIESTA:

Leve speciali - Configurazioni speciali fuori standard
Guarnizioni speciali - Zincature e trattamenti speciali.

APPLICATION:

The use of this valve is to divert the flow from a single input to two alternate ports (L scheme) or to two continuous ports (T scheme).

FEATURES:

Body: zinc-plated steel
Internal components: zinc-plated and chromed steel
Hand lever: Zamak
Seals: Delrin
O-Ring: NBR
Maximum operating temperature: -20°C / +80°C
Fixing holes.
It does not allow any leakage.
It does not accept pressure on the closed port.
Rotation under pressure.

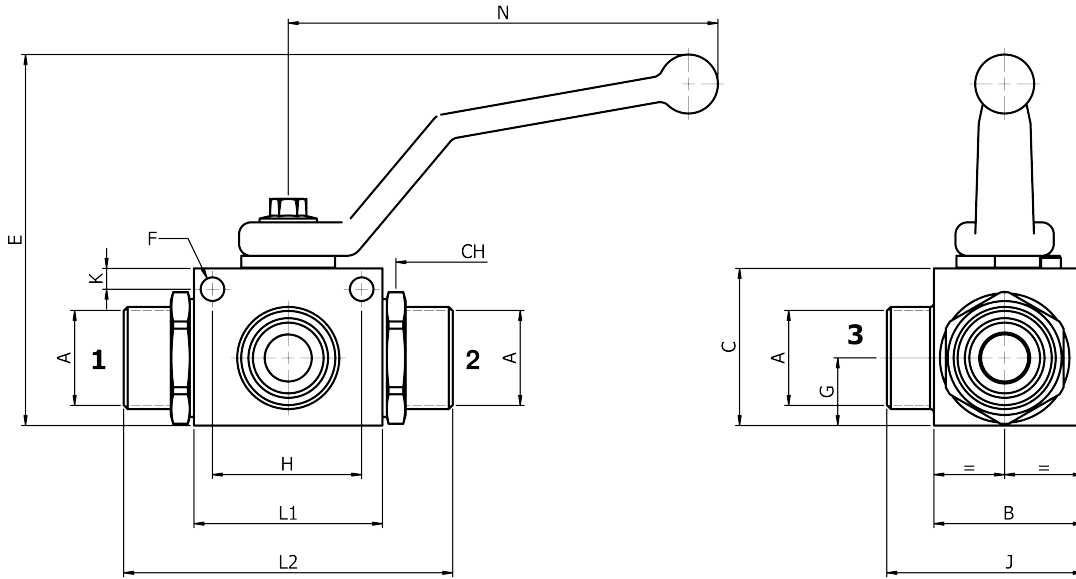
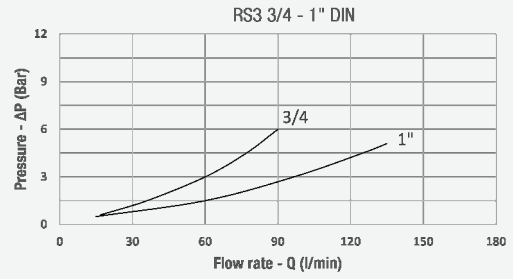
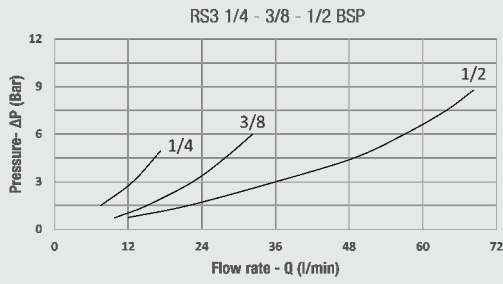
MOUNTING AND OPERATION:

"L" Type (closed center): with the lever in central position, the three ports are partially closed. The lever turns 90° only.
"T" Type (open center): with the lever in the central position, the three ports are completely open. The lever turns 180°.
Lever in position 1 allows flow to A port.
Lever in position 2 allows flow to B port.

UPON REQUEST:

Special levers - Special configurations out of the standard
Special gaskets - Special treatments.

PERDITE DI CARICO
PRESSURE DROPS CURVES



QUOTE / DIMENSIONS

TIPO / TYPE	A	B	C	E	F	G	H	J	K	L1	L2	N	CH	PN (bar)	PESO WEIGHT kg
RS3 1/4 8S	M16x1,5	25	40	78	4,5	19,2	25	37	7	36	71	107	22	500	0,380
RS3 1/4 10S	M18x1,5	25	40	78	4,5	19,2	25	37	7	36	67	107	22	500	0,380
RS3 1/4 12S	M20x1,5	25	40	78	4,5	19,2	25	37	7	36	67	107	22	500	0,380
RS3 3/8 14S	M22x1,5	30	45	83	5	23,4	35	45	5	43	82	107	27	500	0,500
RS3 3/8 16S	M24x1,5	30	45	83	5	23,4	35	45	5	43	82	107	27	500	0,500
RS3 1/2 20S	M30x1,5	34,5	40	78	6	17,2	38	50	5	48	91	107	30	500	0,780
RS3 3/4 25S	M36x2	65	65	139	8	32,7	49	85,5	6	63	111	178	41	400	1,780
RS3 1" 30S	M42x2	70	70	144	8	26	55	97	6	67	121	178	46	350	1,860
RS3 1" 38S	M52x2	70	70	144	8	26	55	100	6	67	126	178	55	350	2,100

CODICI / CODES

TIPO / TYPE	DN
RS3 1/4 8S	6
RS3 1/4 10S	6
RS3 1/4 12S	6
RS3 3/8 14S	10
RS3 3/8 16S	10
RS3 1/2 20S	13
RS3 3/4 25S	20
RS3 1" 30S	25
RS3 1" 38S	25

Con fori fissaggio - sfera a "L"
With fixing holes - "L" ball scheme

CODICE / CODE
536 1161 000
536 1151 000
536 1141 000
536 2141 000
536 2151 000
536 3141 000
536 4121 000
536 5131 000
536 5151 000

Con fori fissaggio - sfera a "T"
With fixing holes - "T" ball scheme

CODICE / CODE
536 1160 000
536 1150 000
536 1140 000
536 2140 000
536 2150 000
536 3140 000
536 4120 000
536 5130 000
536 5150 000

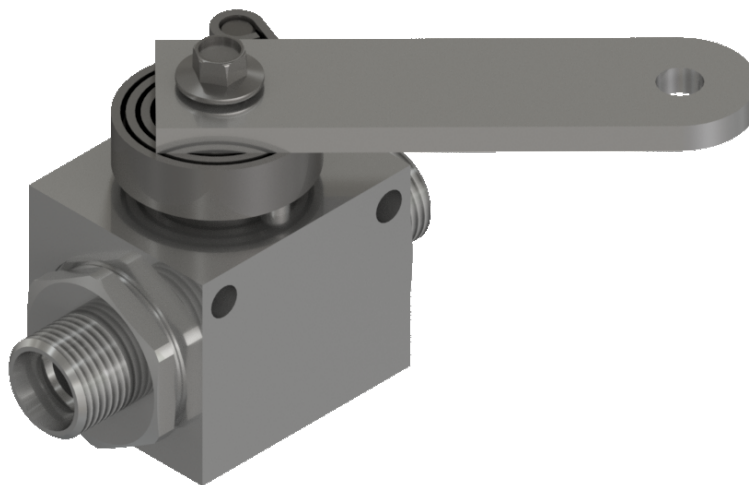
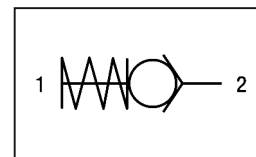
RUBINETTO A SFERA A 2 VIE

LIMITATORE DI CORSA

STROKE LIMITER

DIN 2353 SERIE "L"

SCHEMA IDRAULICO
HYDRAULIC DIAGRAM



APPLICAZIONE:

È utilizzato per limitare la corsa sui cilindri idraulici a semplice effetto.

NOTE COSTRUTTIVE:

Corpo: acciaio zincato
Componenti interni: acciaio zincato, cromato e temprato
Guarnizioni: Delrin
O-Ring: NBR
Temperatura d'esercizio max: -20°C / +80°C
Fori di fissaggio.

MONTAGGIO E FUNZIONAMENTO:

Leva in posizione di partenza, la valvola è aperta.
Normalmente aperto:
Collegare il cavo collegato all'asta del cilindro con la maniglia della valvola. Il movimento aziona la maniglia ruotando la sfera nella posizione di chiusura. Interrompendo il flusso.
Dopo la chiusura della valvola, la pressione è trasferita sulla sfera e passa attraverso il forellino di scarico. Il cilindro quindi si ritrae e la molla a spirale si rilassa riportando la sfera in posizione di partenza.

A RICHIESTA:

Fori fissaggio speciali - Attacchi maschio BSP
Configurazioni speciali fuori standard
Zincature e trattamenti speciali.

APPLICATION:

The use of this valve is to reduce the movement of hydraulic cylinder simple effect.

FEATURES:

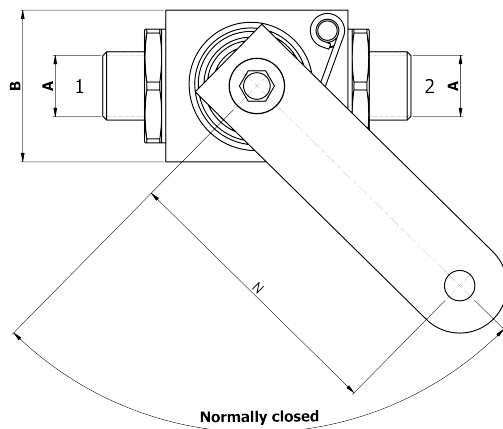
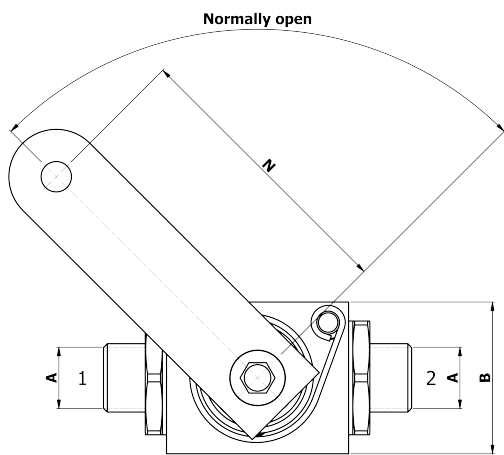
Body: zinc-plated steel
Internal components: zinc-plated, hardened and chromed steel
Seals: Delrin
O-Ring: NBR
Maximum operating temperature: -20°C / +80°C
Fixing holes.

MOUNTING AND OPERATION:

In starting position the valve is open.
Normally open:
connect the cable to the cylinder with the handle of the valve.
The movement drives the handle by rotating the sphere in the closed position, interrupting the flow. After closing the valve the pressure is transferred to the ball and passes through the drain hole. The cylinder then retracts and the spiral spring is released, returning the ball to the starting position.

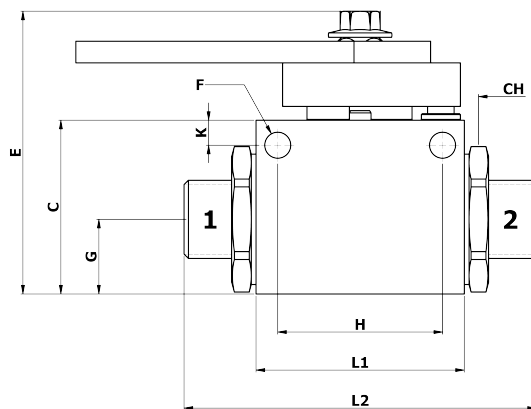
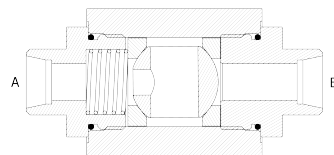
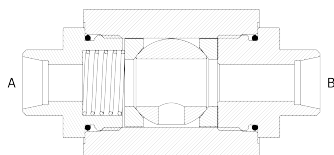
UPON REQUEST:

Special fixing holes - BSP male threads
Special configurations out of the standard
Special treatments.



Tipo A / Type A
Normalmente Aperto / *Normally Open*

Tipo B / Type B
Normalmente Chiuso / *Normally Closed*



QUOTE / DIMENSIONS

TIPO/TYPE	A	B	C	E	F	G	H	K	L1	L2	N	CH	PN (bar)	PESO WEIGHT kg
RSS 1/2 15L	M22x1,5	40	40	65	6	17,2	38	5.5	48	84	74,5	30	350	0,630
RSS 1/2 12L	M18x1,5	40	40	65	6	17,2	38	5.5	48	81	74,5	30	350	0,630

CODICI / CODES

TIPO / TYPE	DN
RSS 1/2 15L	13
RSS 1/2 12L	13

Centro aperto (tipo B)
Open center (type B)

CODICE / CODE
526 3011 S
526 3021 S

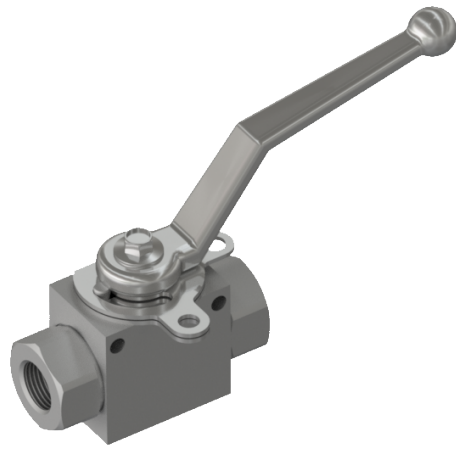
Centro chiuso (tipo A)
Closed center (type A)

CODICE / CODE
526 3012 S
526 3022 S

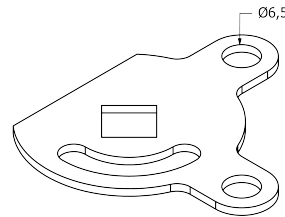
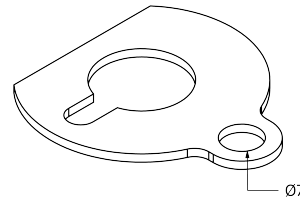
ACCESSORI RUBINETTI

ACCESSORIES FOR VALVE

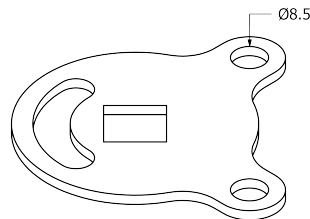
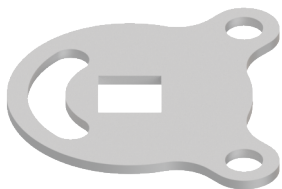
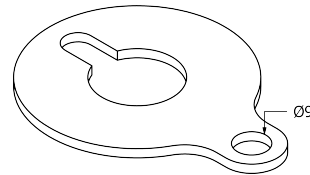
DISPOSITIVO DI LUCCHETTAGGIO
LOCKING DEVICE



MISURA / SIZE: 1/4 to 1/2



MISURA / SIZE: 3/4 to 1" 1/2

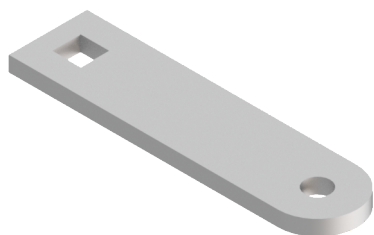


CODICI / CODES

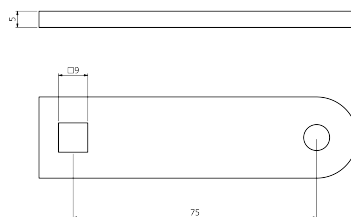
TIPO / TYPE	Senza fori fissaggio Without fixing holes	Con fori fissaggio With fixing holes
RS2 1/4 - LOCK	525 1000 LUC	525 1100 LUC
RS2 3/8 - LOCK	525 2000 LUC	525 2100 LUC
RS2 1/2 - LOCK	525 3000 LUC	525 3100 LUC
RS2 3/4 - LOCK	525 4000 LUC	525 4100 LUC
RS2 1" - LOCK	525 5000 LUC	525 5100 LUC
RS2 1" 1/4 - LOCK	525 6000 LUC	525 6100 LUC
RS2 1" 1/2 - LOCK	525 7000 LUC	525 7100 LUC

LEVE HAND LEVERS

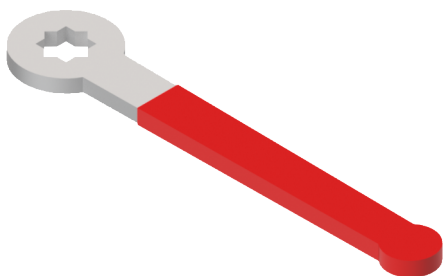
CODICE / CODE: LEVA RSS
PIATTA / FLAT



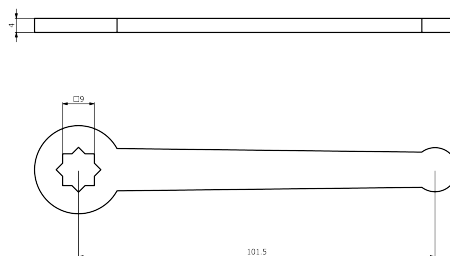
MISURA / SIZE: 1/4 to 1/2



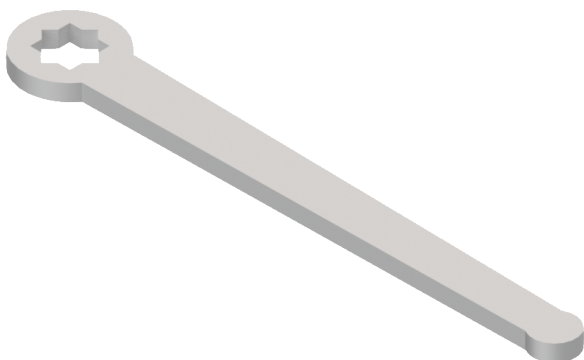
CODICE / CODE: 525 1ROS PLA
DRITTA CORTA PLASTIFICATA ROSSA / RED PLASTIFIED SHORT STRAIGHT



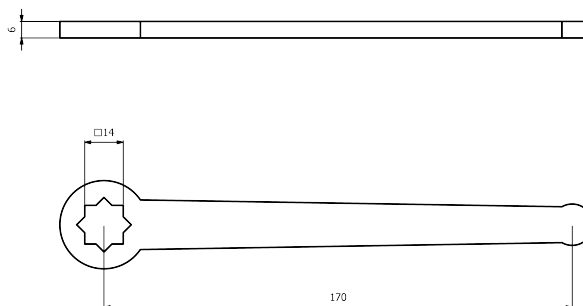
MISURA / SIZE: 1/4 to 1/2



CODICE / CODE: 525 4DRI 005 *
DRITTA LUNGA / LONG STRAIGHT



MISURA / SIZE: 3/4 to 1" 1/2



*Disponibile anche versione plastificata rossa CODICE: 525 4DRI PLA
Also available in a red plastic version CODE: 525 4DRI PLA