

**Satmonitor
Technical Description**



Technical Description

<i>APPROVAZIONI</i> <i>Approvals</i>	<i>NOMINATIVO E FIRMA</i> <i>Name and Signature</i>	<i>ENTE /FUNZIONE</i> <i>Department</i>
PREPARATO DA: Prepared by:	Francesca Vita	Technical Department / Technical Manager
CONTROLLATO DA: Checked by:		
APROVATO DA: Approved by:		

<i>Issue</i> <i>No.</i>	<i>Date</i>	<i>Changes / Description</i>	<i>Note</i>
A	15/03/2018	First Emission	

©Italspazio S.r.l., 2018

The copyright of this document is property of Italspazio S.r.l. This document is issued in confidence for the exclusive purpose for which it is supplied. It must not be reproduced, in whole or in part, or used for tendering or manufacturing purposes, except under an agreement or with the prior consent in writing of Italspazio S.r.l.

For service assistance please contact Italspazio Customer Care:

Italspazio S.r.l.

Via P. Mascagni, 27/B

95037 – San Giovanni La Punta (Catania) Italy

Tel./Fax.: +39 095 7511521

E-mail info@italspazio.it

Index

1	OVERVIEW	5
2	MAIN FEATURES	6

Index of Figures

FIGURE 1 - SATMONITOR DASHBOARD	5
FIGURE 2 - COLOUR GRAVITY	6
FIGURE 3 - VSAT DETAILED VIEW	7
FIGURE 4 - SATTRAFFIC GRAPH	8
FIGURE 5 - BER GRAPH	8
FIGURE 6 - OVERLAY WEATHER MAP – CLOUDS	9
FIGURE 7 - OVERLAY WEATHER MAP - PRECIPITATIONS.....	10
FIGURE 8 - OVERLAY SATELLITE COVERAGE	11
FIGURE 9 - ROUTE OPTION	12
FIGURE 10 - ROUTE OPTION - DETAILED POINT	12

1 Overview

Satmonitor is a web platform powered by Italspazio used to monitor VSAT systems, independently of which technologies you are using. Indeed, Satmonitor platform only requires a SNMP compatible device for a quick installation.

This platform integrates nearly every aspect of a NOC and through a rich set of monitoring features, provides an in depth view into the network's quality performance. Satmonitor is a user-friendly Web Platform that provides real-time VSAT Monitoring that grants the end user a comprehensive overview over connected assets. The platform is optimized for cross-platform and can be accessed from tablet, smartphone and desktop. The scope of the platform is to provide live tracking solutions for either fixed or mobile stations. The tracking is visually represented by colour coded markers displayed on geographical mapping software powered by Google. Additionally, the platform has also been designed to integrate essential services such as real-time remote sensing (Weather reports) and technical satellite data (Coverage, Latency, IP traffic, Bit Error Rate, etc.) for control and security purposes.

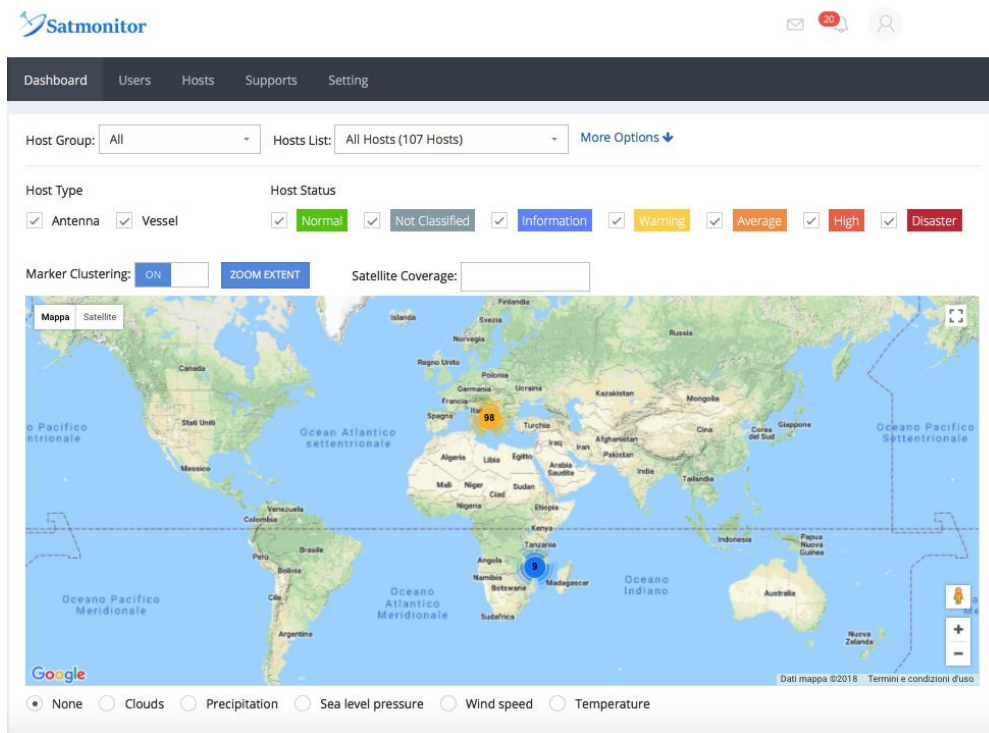


Figure 1 - Satmonitor Dashboard

2 Main Features

In the paragraphs below we will explain the Satmonitor's main features.

The web monitoring platform allows real-time viewing of issues that may arise on VSAT stations. This is possible thanks to the use of appropriate triggers which, if in action, change the colour of the marker on the map. The marker's colour will identify the severity of the problem encountered. This allows an immediate and visual approach to the presence of a problem. It is also possible to see on the map only the problematic stations, discriminating appropriately by gravity associated to the problem.

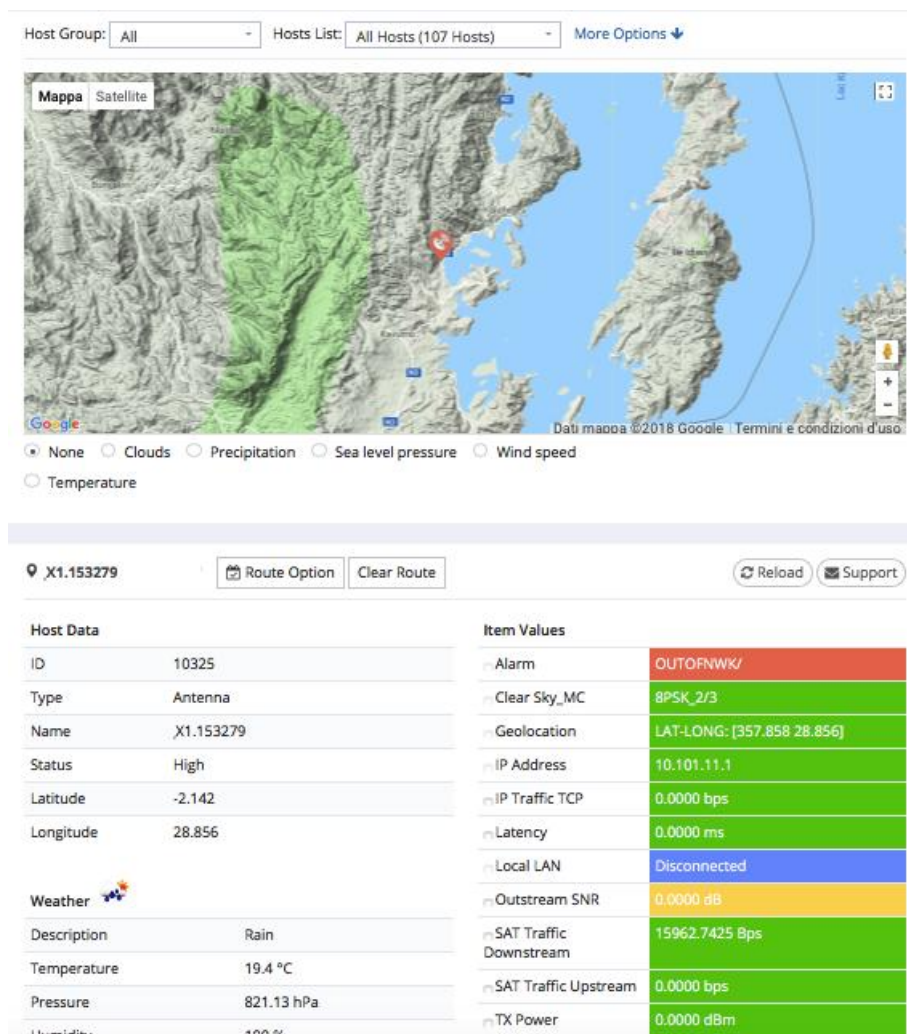


Figure 2 - Colour Gravity

Technical Description

For each VSAT station being monitored, it is possible to display the characteristic parameters that highlight the health of the satellite link. The instantaneous value of parameters such as C/N, BER, or the latency is accompanied by the graph, which allows the trend of these parameters.

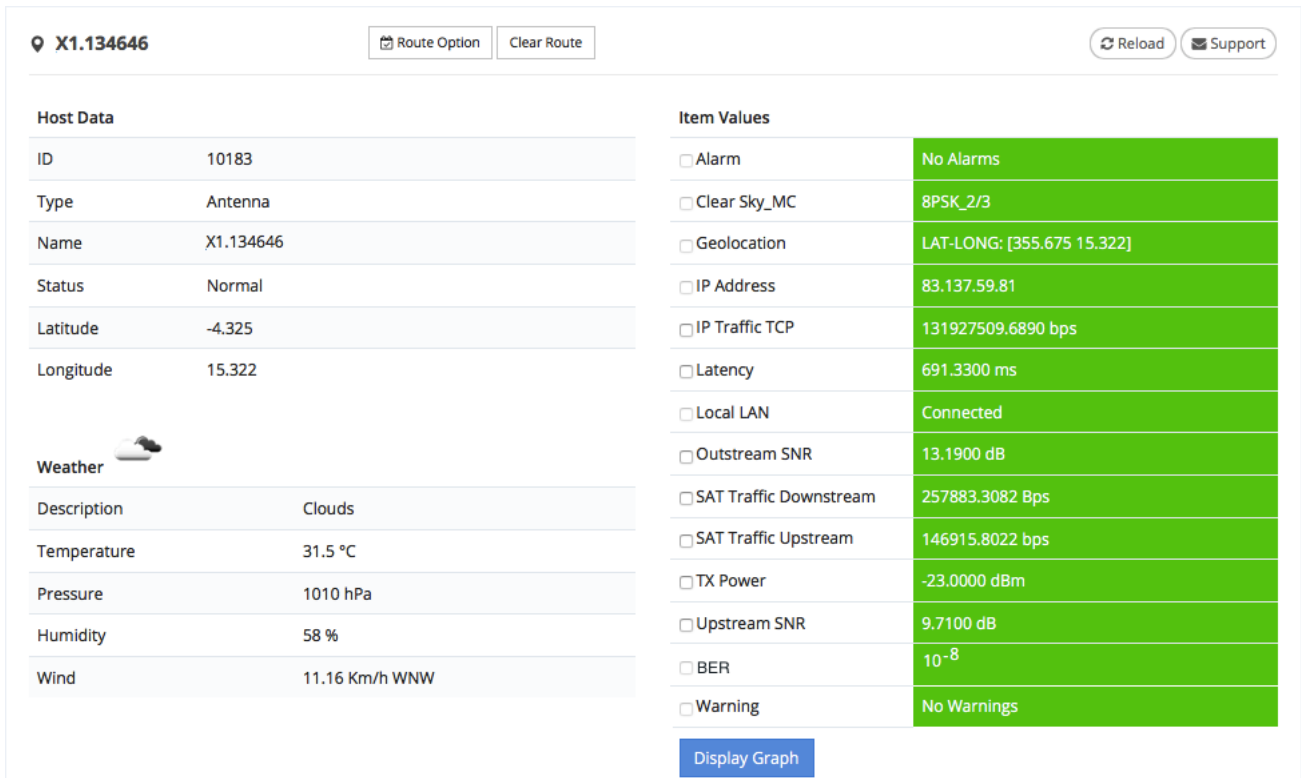
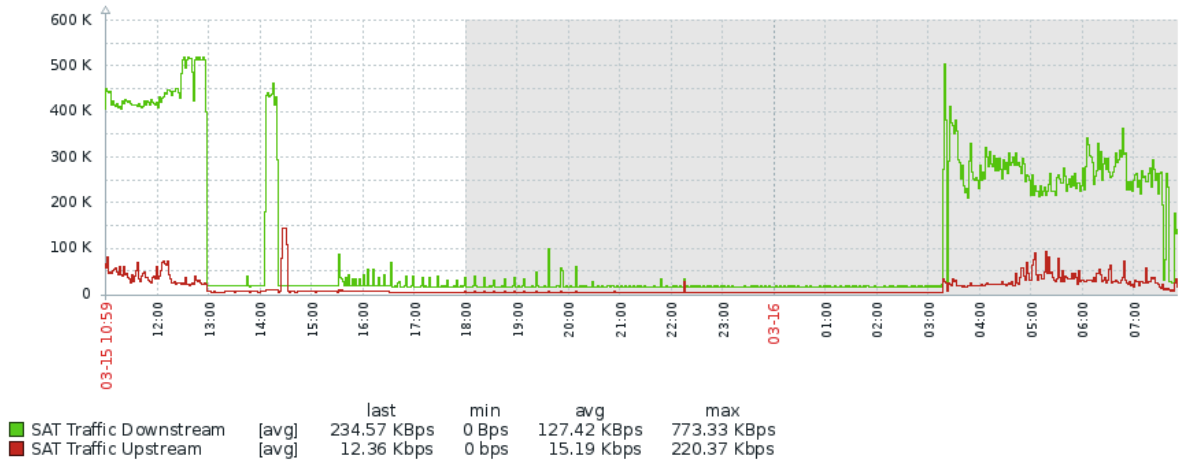


Figure 3 - VSAT Detailed View

Technical Description

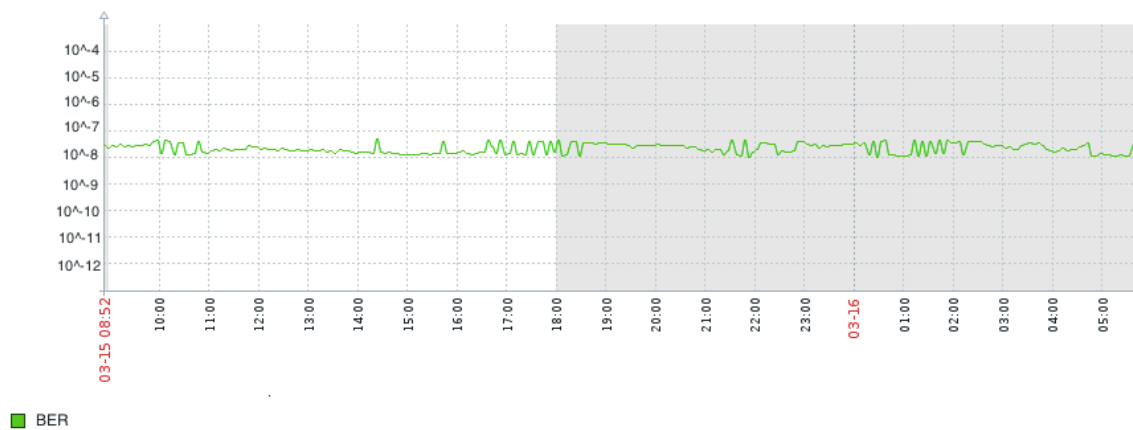
 Graph view ×

 Date Range: 03/15/2018 14:33 to 03/16/2018 14:33 📅


Close

Figure 4 - SatTraffic Graph

 Graph view ×

 Date Range: 03/15/2018 12:26 to 03/16/2018 12:26 📅


Close

Figure 5 - BER Graph

Technical Description

Parameters such as C/N are strongly influenced by atmospheric agents. For this reason, it is possible, through the platform, to have updated weather information on the single station of interest and globally by superimposing the weather maps on the geographical map that makes up the Satmonitor dashboard.

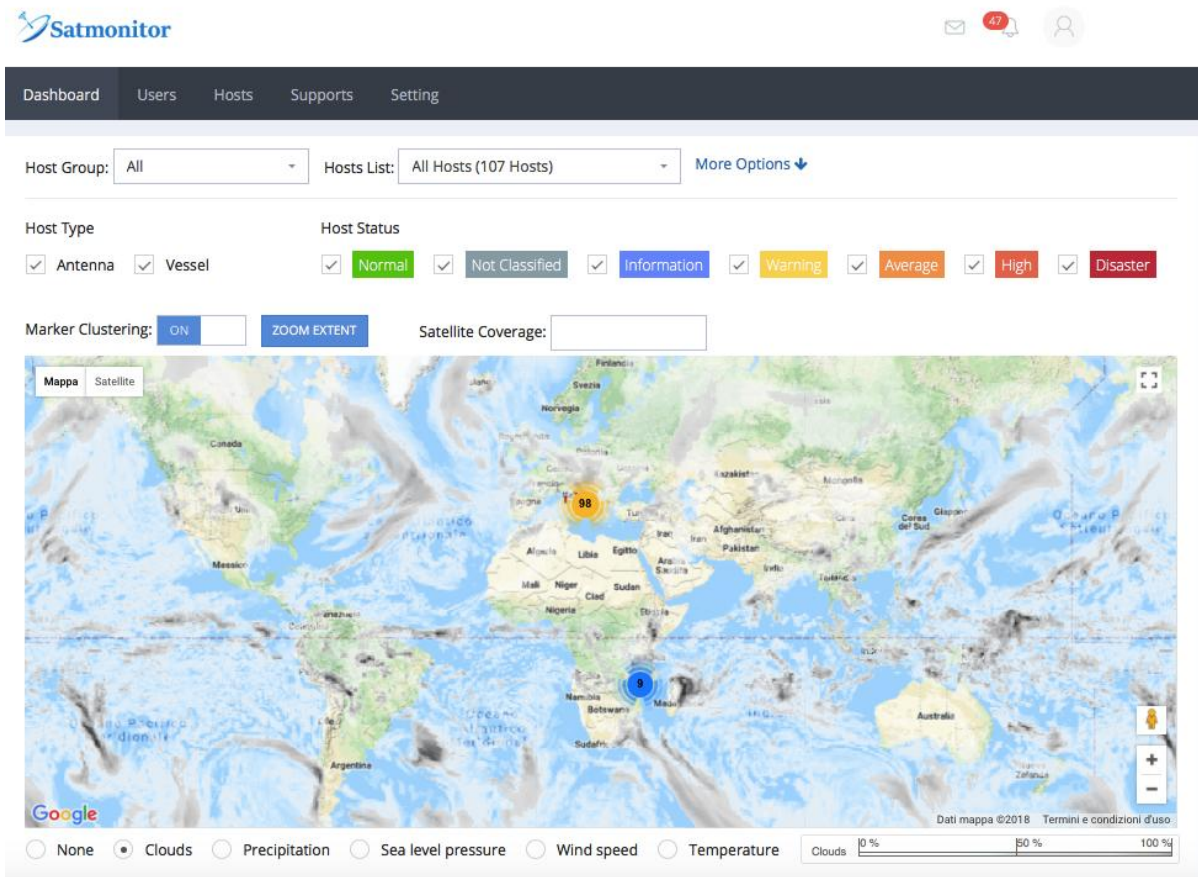


Figure 6 - Overlay Weather Map – Clouds

Technical Description

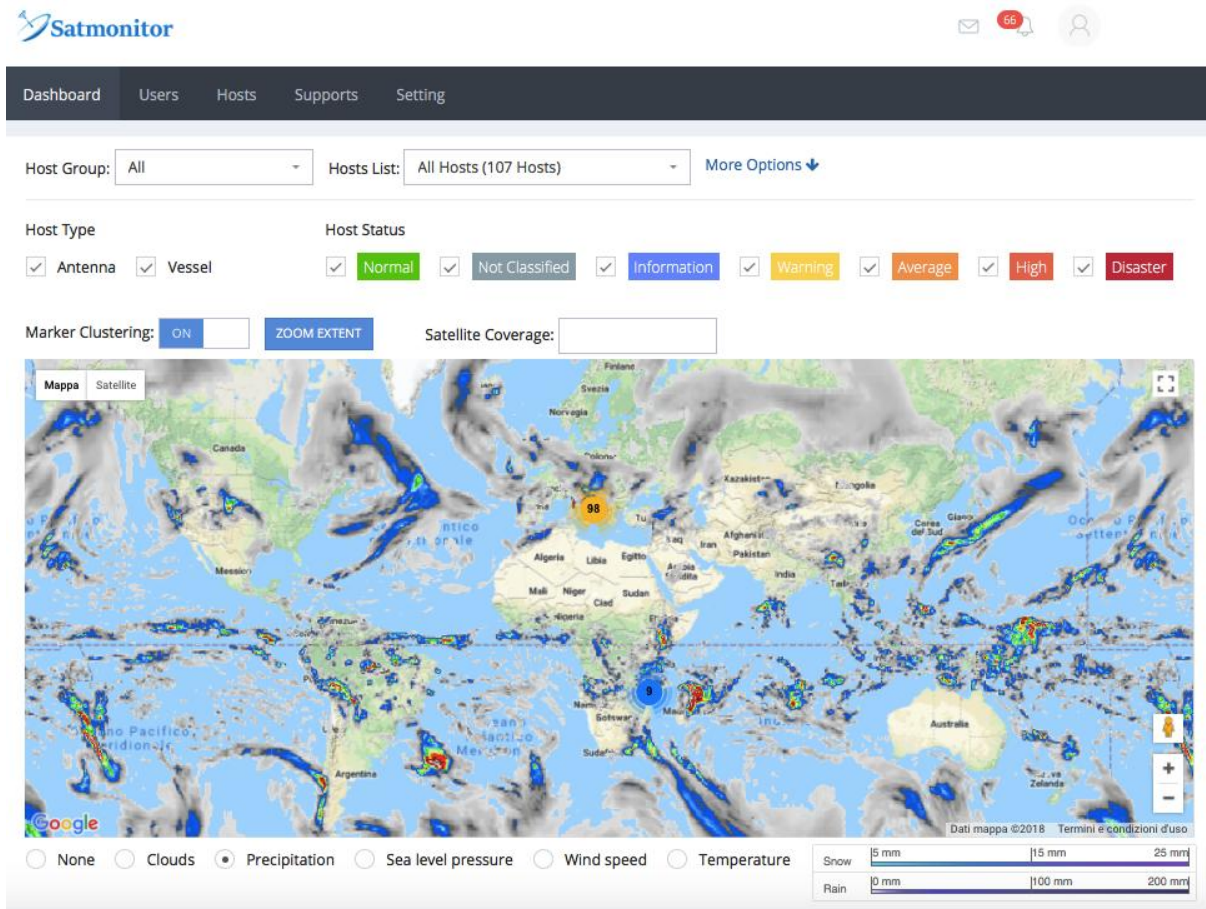


Figure 7 - Overlay Weather Map - Precipitations

In addition to weather maps, you can overlay the satellite coverage map on the geographical map.

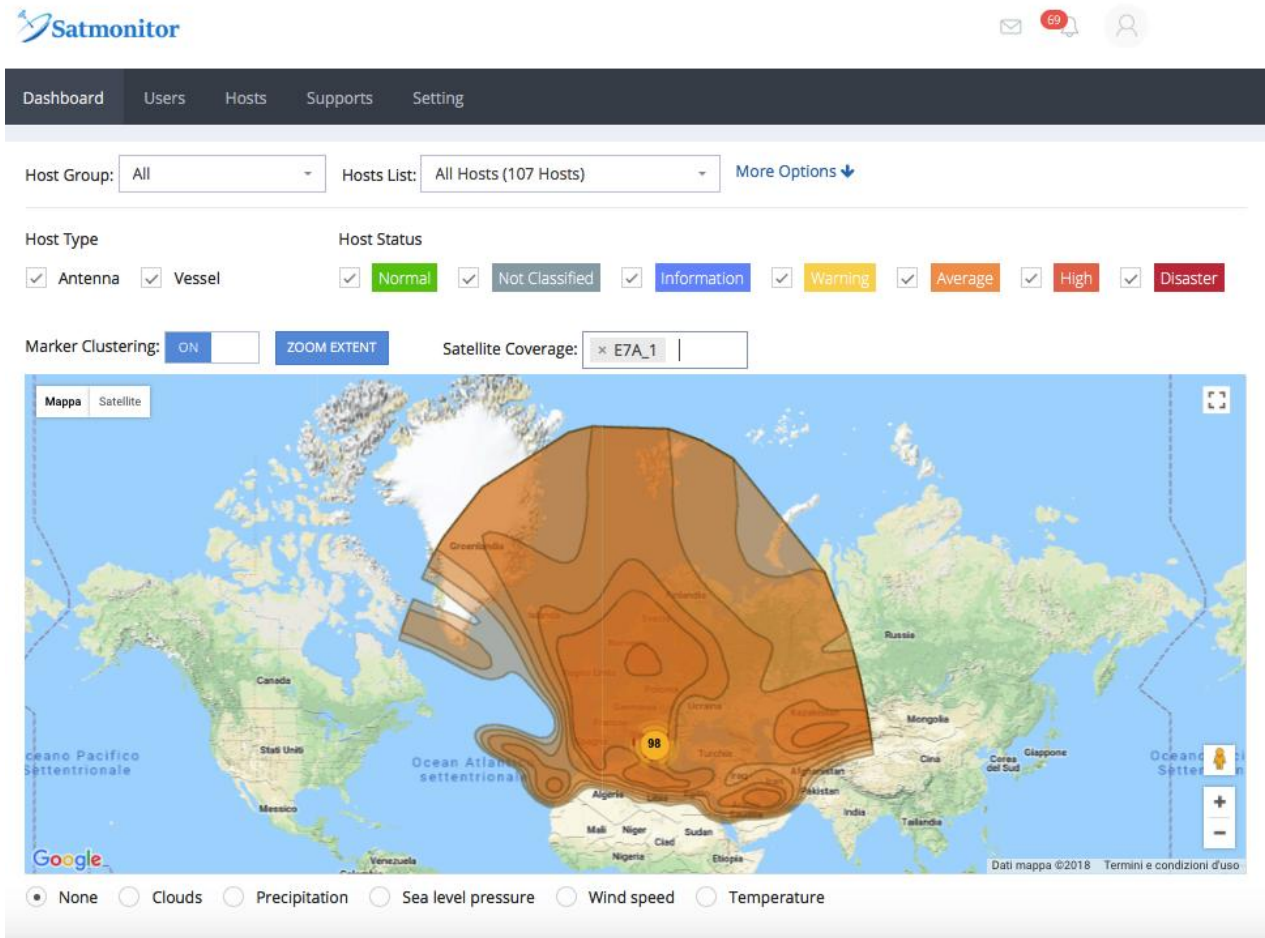
Technical Description

Figure 8 - Overlay Satellite Coverage

Technical Description

Satmonitor platform permits accurate live tracking for Mobile stations.

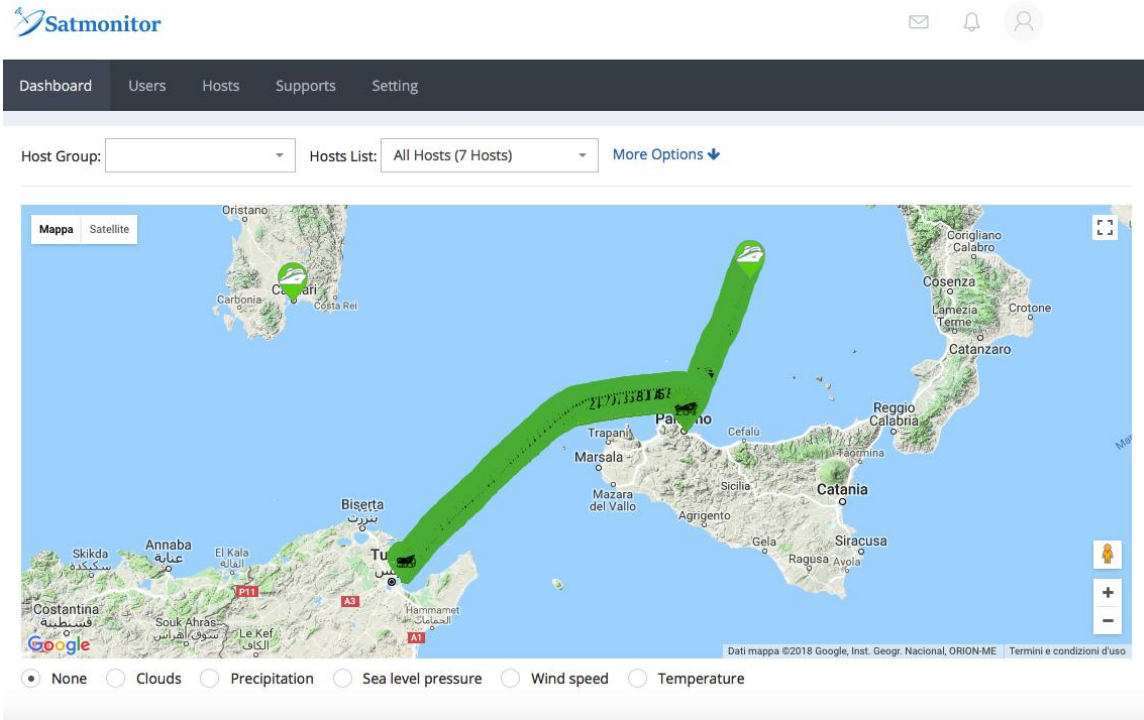


Figure 9 - Route Option

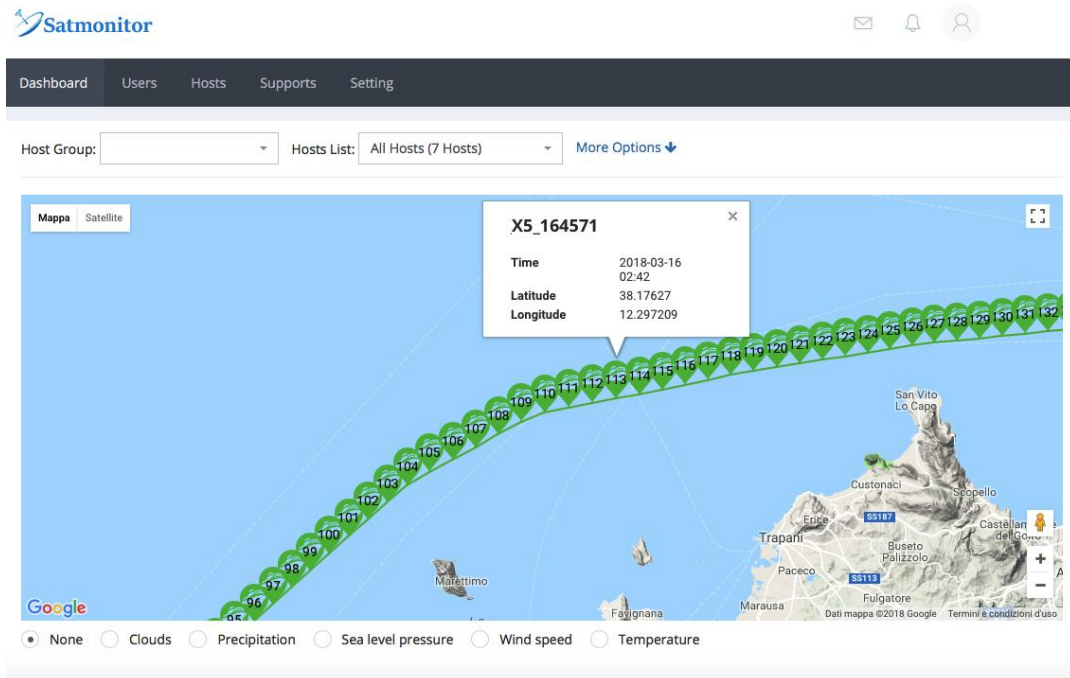


Figure 10 - Route Option - Detailed Point

Technical Description

An important feature of the Satmonitor platform is that it allows monitoring of your network even from mobile devices such as tablets or smartphones.

No installation is required, simply by having an Internet connection available.