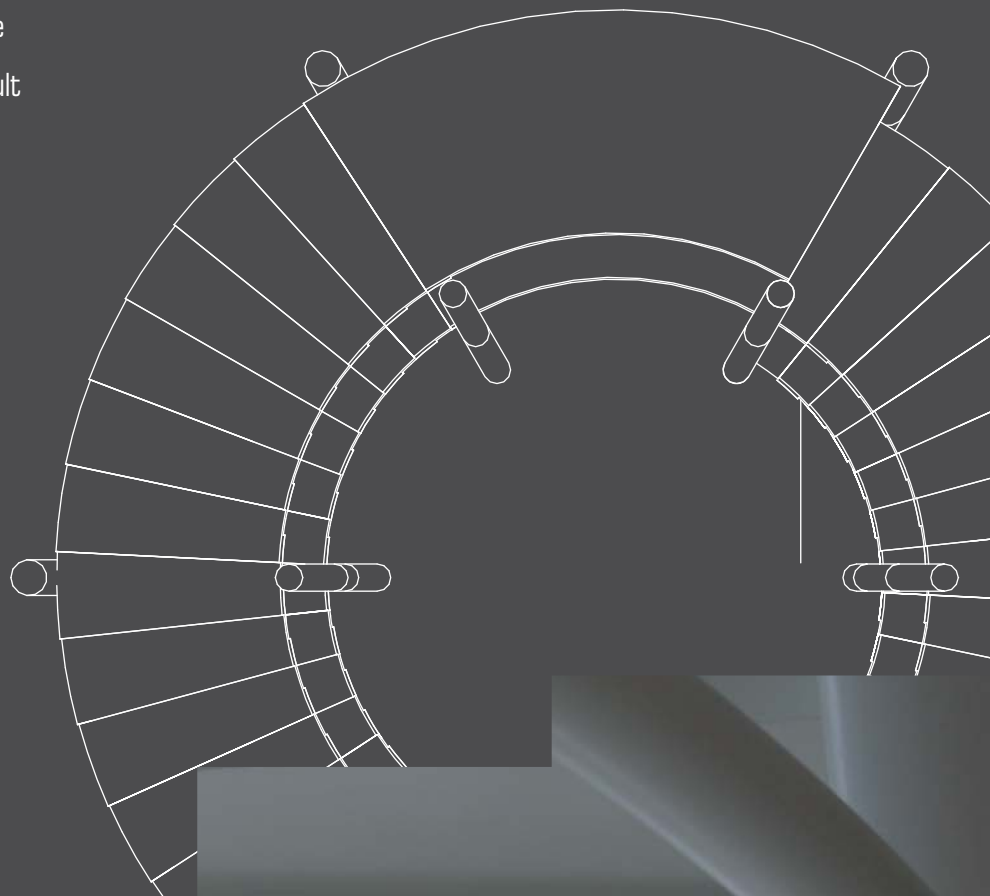




# FORMWORK FOR STAIRS

Arbloc combines twenty years of artisan experience with precise 3D design to create stairways to suit diversified needs. The result is a custom-made formwork that enables the customer to achieve uniform concrete casting along the entire ramp.



# formworks for soffits (the underside of stairways)

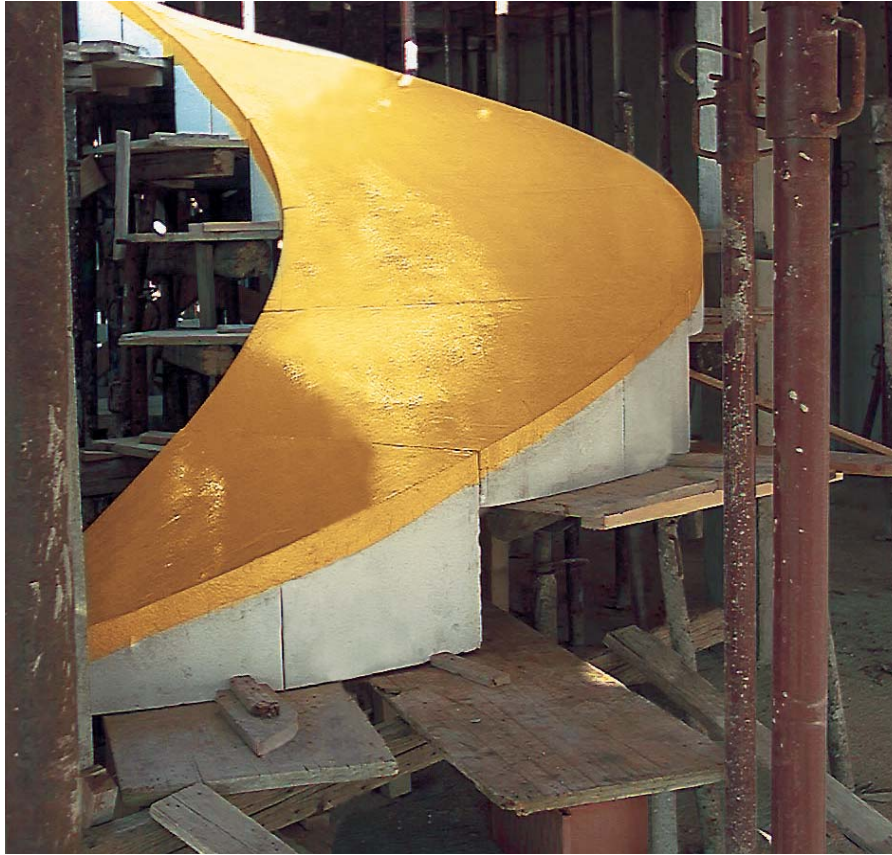
Arbloc's formworks for stairway soffits are made of polystyrene foam and coated with various types of materials. Arbloc's cutting system enables the creation of complex shapes like those of circular spiral stairs, winder stairs and zig-zag design stairs. Uniform concrete thickness is guaranteed both on the inside and outside of the staircase and from bottom to top,

in accordance with project dimensions. The types of coating vary according to the shape of the stairs and the different functions: from the revolutionary Syform resin, to smooth wood panels or planed wood strips for fair facing finishes.



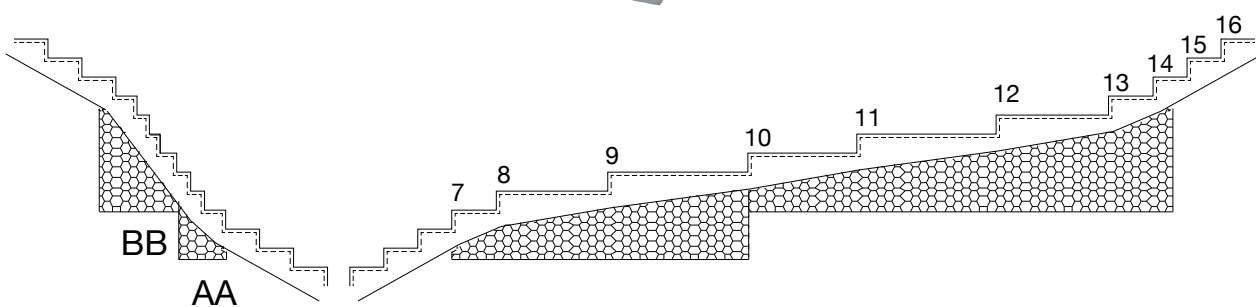
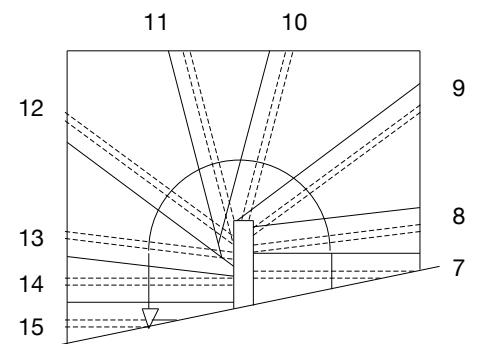
## FORMWORK PERFORMANCE FEATURES

TYPE A STAIRS	WINDER STEPS	SPIRAL	ZIG-ZAG STEPS
Compression resistance of polystyrene with $\leq 3\%$ deformation	60 kn/ m2	60 kn/ m2	60 kn/ m2
Coating	Syform	Syform	Step : Westag 10 mm
Coating deformation resistance	25 kg./cm2. with 3 mm bending	25 kg./cm2. with 3 mm bending	100 kg./cm 2
Sizes of the parts	Two- or three-steps modules	Two- or three-steps modules	Two- or three-steps modules
Connections with straight ramps	Yes, on request	Yes, on request	NO
Installation instructions	YES	YES	YES
Treadability	Partly	Partly	YES
Reuse	YES	YES	YES
Fair facing	NO	NO	YES
Release agent	CIRE LM33, 120 m2/kg, applied with a cloth	CIRE LM33, 120 m2/kg, applied with a cloth	CIRE LM33, 120 m2/kg, applied with a cloth

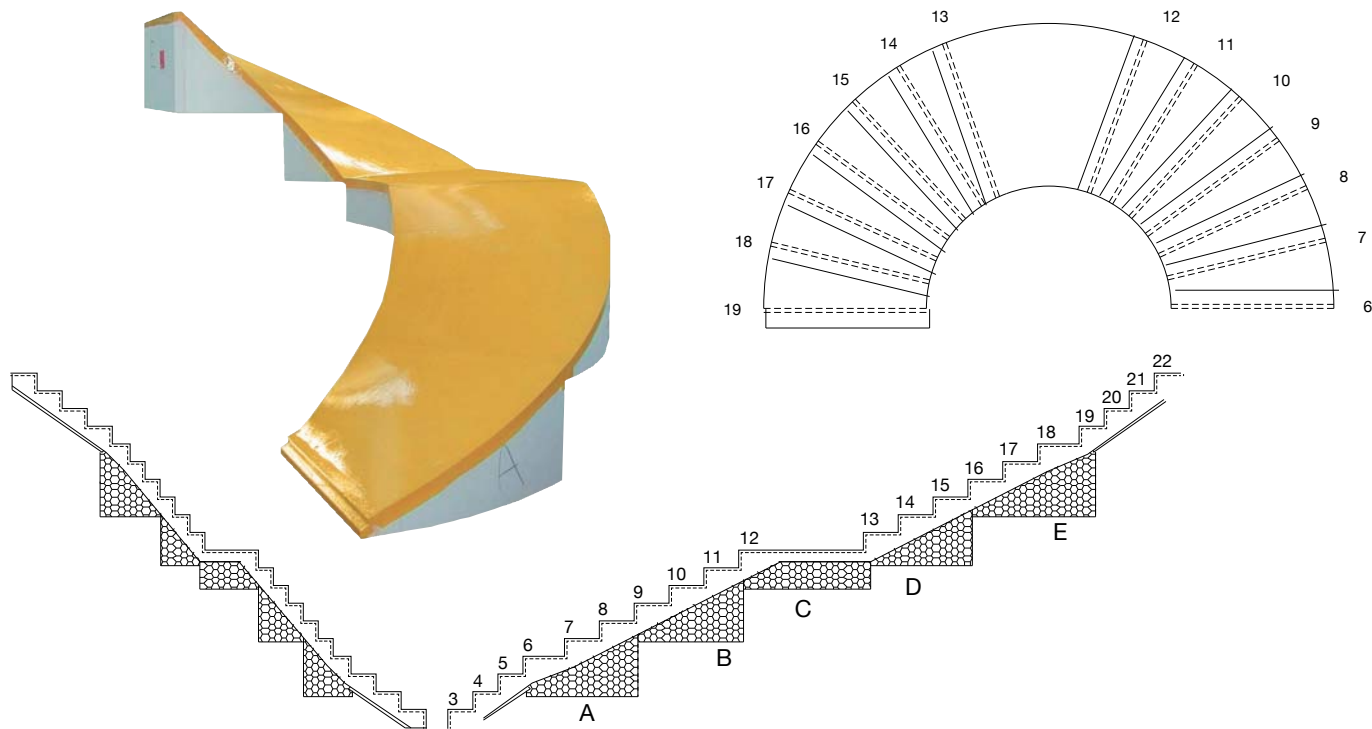


Formworks are produced in parts in order to facilitate handling in the building yard. Each element constitutes the bottom of two or more steps, depending on the size of the stairs. The forms are placed on a panelled falsework as required. The side supports are made up of vertical boards placed against the polystyrene on the sides of the ramp. Lastly, the boards for the rises are fixed to the sides like in traditional carpentry work.

## SPIRAL STAIRS with winder steps



## Circular/elliptic type SPIRAL STAIRS



## Circular/elliptic type ZIG-ZAG STAIRS

