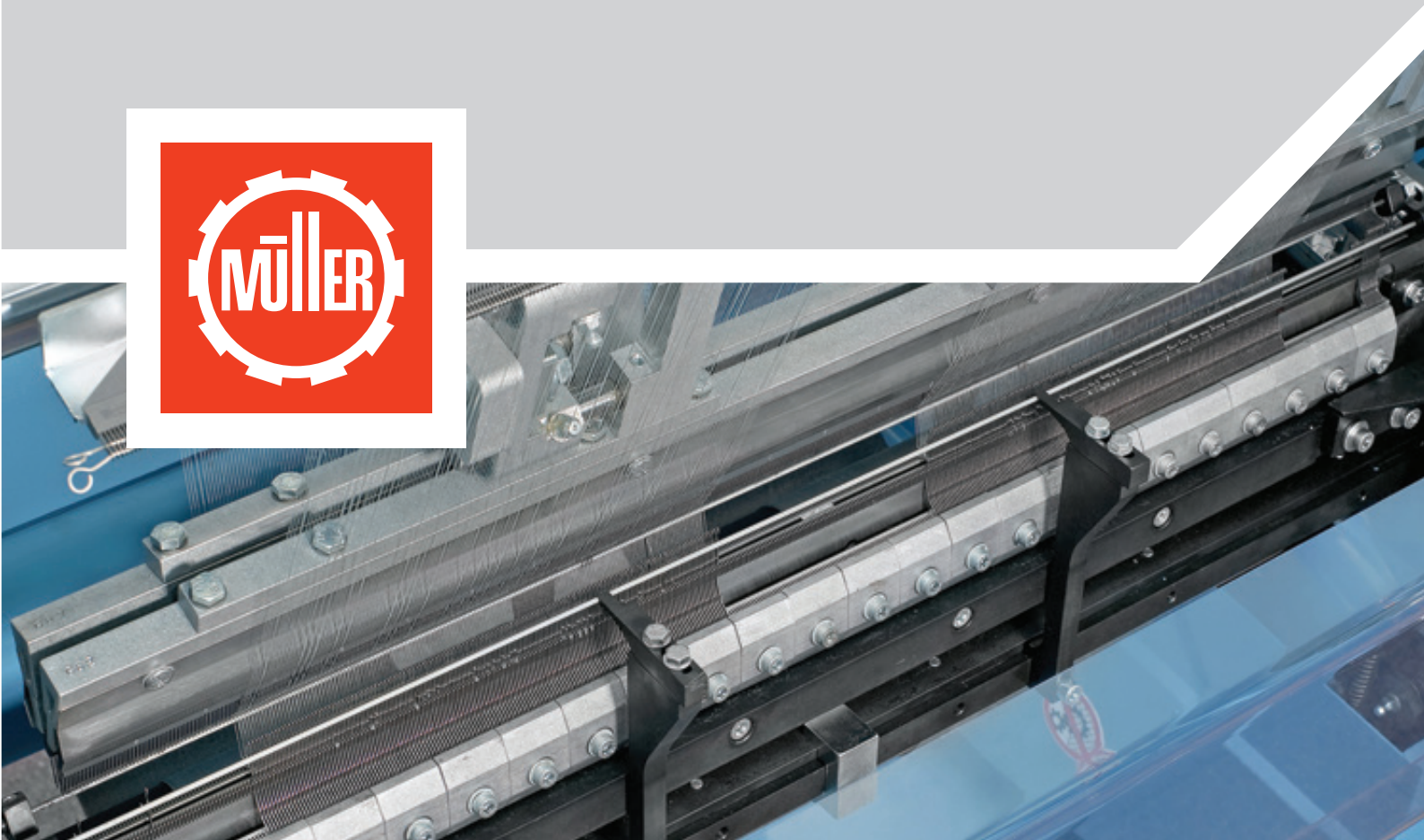


DNB/600-2B

High speed warp knitting machine with double needle bed
for sportswear accessories and technical articles



DNB/600-2B

WARP KNITTING MACHINE WITH DOUBLE NEEDLE BED FOR THE PRODUCTION OF SPORTSWEAR ACCESSORIES AND TECHNICAL ARTICLES

▲ GENERAL FEATURES

The machine is equipped with:

- 3-roller feeder for non-elastic threads, with mechanical control
- Differential 3-roller feeder for non-elastic threads, with mechanical control
- Electronic speed variator INVERTER
- Shock absorber feet
- Warning light
- Work area safety device
- Finished product take-down rollers
- Automatic stop motions for incorrect product winding onto the rollers

- Automatic stop motions for thread breaks or empty cones
- Reed unit for oscillation thread guiding
- Standard supply package of consumables and accessories

The machine is equipped with 2 guide bars with mechanical control and can process any type of yarn, both synthetic and natural, according to the machine gauge. Mechanically driven feeders and take off rollers provide a variable stitch density and tension setting.

Two needle beds and the guide bars enable the production of double face structures, i.e. both sides of the fabric look identically. The distance between the two needle beds is adjustable up to a maximum of 5 mm.

▲ USER BENEFITS

- Best consistency fabrics, difficult to obtain on single-needle bed machinery for traditional fabrics



DNB/600-2B

- Very high productivity thanks to the operating speed along with the low stitch density value required by fabrics produced
- Higher efficiency: compact design and reduced working width enabling fast article change overs for small and long runs

APPLICATIONS

Wide range of articles, such as:

- Outerwear (scarves)
- Sportswear (ribbons applied to fabrics as binding)
- Fabrics for technical uses

ON REQUEST

- Customized devices for rolling up or plaiting the fabric outside of the machine
- Some products require thermofixation to be applied to the machine



1

PICTURES

- 1 Tubular cords for face masks
2-5 Bands made on DNB machine

ALTERNATIVE TECHNOLOGIES FOR WARP KNITTING MACHINES WITH SINGLE AND DOUBLE NEEDLE BED

DNB/EL-800-8B

Electronic double needle bed warp knitting machine for underwear, outerwear, footwear, and for technical and medical uses

SNB/EL-800

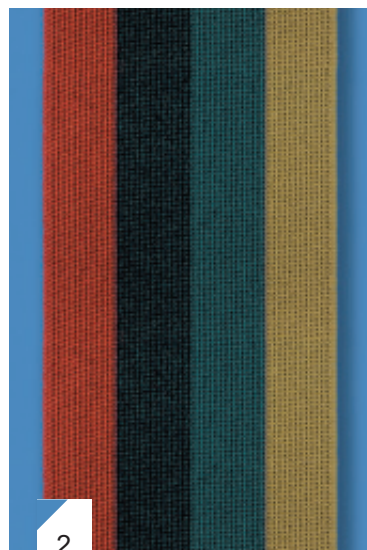
Electronic warp knitting machine with single needle bed and a sinker bar, for the production of articles for outerwear, for technical and medical uses

DNB/EL-32-12B

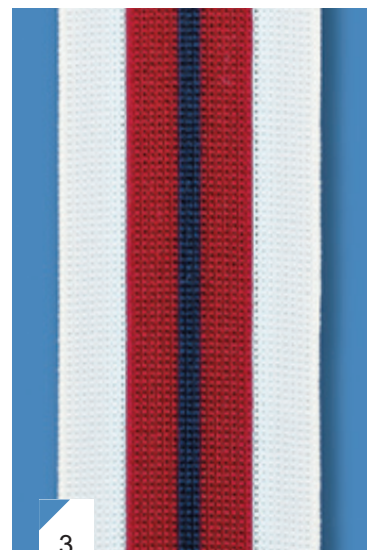
Electronically controlled warp knitting machine with double needle bed for technical and garment textiles

CDK80

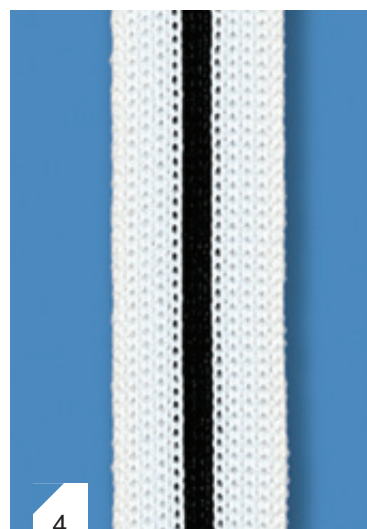
Easy access electronic warp knitting machine with double needle bed for the production of technical textiles and garment articles



2



3



4



5

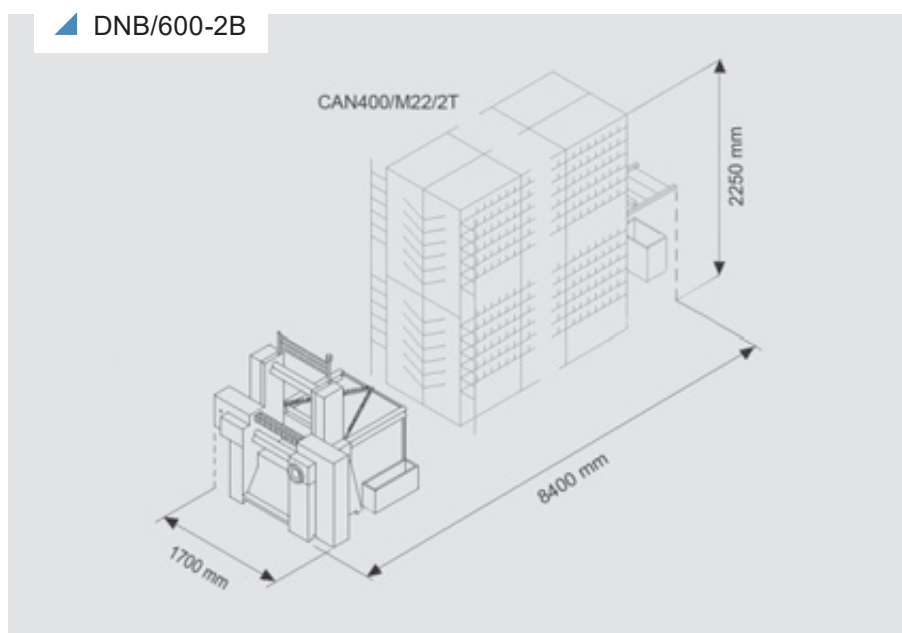
TECHNICAL SPECIFICATION

Gauge (n.p.i.)	15	18	20	22
Number of needle grooves on needle bed	360	432	480	528
Working width	609 mm			
Number of guide bars	2			
Distance between needle beds	1 - 5 mm			
Needle type	latch needles			
Stitch density (on both needle beds)	2 - 18 stitches/cm			
Electrical supply mains	200 - 240 / 380 - 440 V, AC, 3-phase + earth			
Main motor power	1.5 kW			
Installed power	1.7 kVA			

▲ DIMENSIONS

Width: 1700 mm
Depth: 900 mm
Height: 2200 mm
Net Weight: 600 kg

▲ DNB/600-2B



Copyright © 2021 by Comez International s.r.l., a member of Jakob Müller Group
27024 Cilavegna Italy

Printed in Italy. All rights reserved.

No part of this publication may be reproduced by any means, nor translated, nor transmitted into a machine language without the written permission of the publishers.

This leaflet contains photos and technical data for information only, without contractually engagement. Subject to change without notice.



Rep.:



Comez International s.r.l
27024 Cilavegna Italy
Tel +39 0381 698611
Fax + 39 0381 698698
info@comez.com
www.comez.com