

Comfort-in™

Needle Free Injection System



No Pain



Time Saving



Innovation

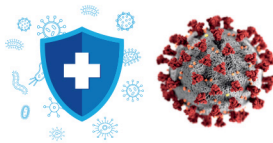


Safety



NEEDLE FEAR

IS JUST A MEMORY



The new era
of prevention
against pathogens



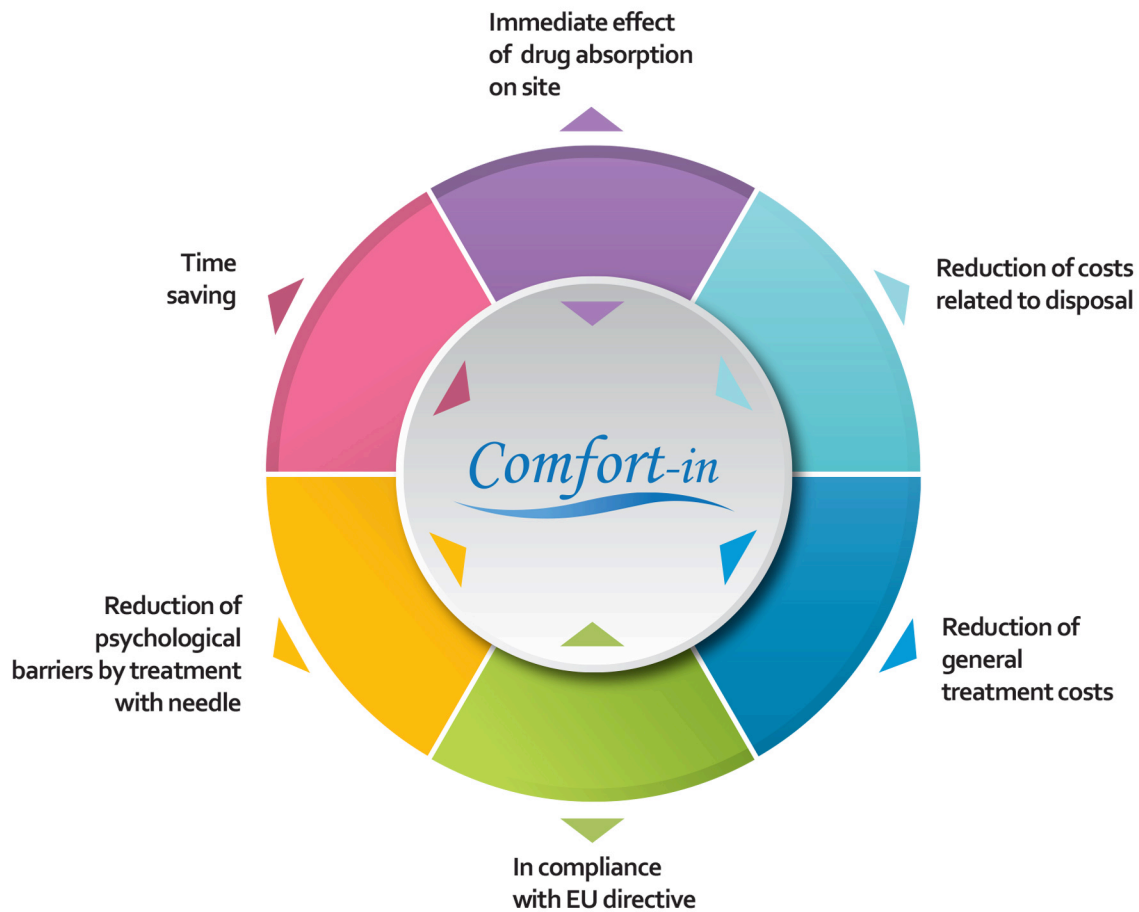
GAMASTECH
INNOVATIVE INFUSION SYSTEMS

www.comfort-in.eu



COMFORT-in™ is a revolutionary system that permits the subcutaneous administration of drugs and vaccines. It is also suitable for the use by patients, under their doctor's authorization, for the self-injection.

It is commonly used in dentistry, diabetes, oncology, rheumatology, veterinary medicine, physiotherapy, local anesthesia, treatment post-surgery, aesthetic medicine, acute and chronic pain, sports medicine, infertility, erectile dysfunction, vaccines.



Three different speed for optimum use of Comfort-in:

Normal

Intended for patients with fatty tissue thicker and for areas of the body like abdomen and thighs.

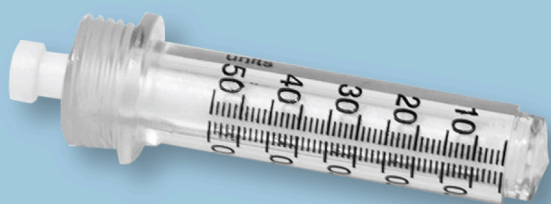
Medium

Intended for patients with fatty tissue less thick and for areas of the body where the fat layer is particularly thin as hands and feet.

Soft

Primarily intended for use in dentistry and in aesthetic medicine. Being characterized by a reduced speed can be used in pediatrics for all the different fields of use.

Nozzle (cod. NZ-70): needleless syringe with graduated scale that can contain up to 0.5ml of the drug.



5 Different adapters are available to withdraw the drug from any type of container.



LUER ADAPTER (cod. AD-LUER)

It's a universal adapter suitable for all types of ampoules. AD-Luer provides the use of a common needle.



VIAL ADAPTER (cod. AD-VIAL)

It's used to take insulin or other medical substances from ampoules with 14 mm diameter.



DENTAL ADAPTER (cod. AD-DENTAL)

Used to withdraw the drug from dental carpule or from any other dental vials.



PEN ADAPTER (cod. AD-PEN)

It is commonly used to withdraw the drug from insulin pens.



UNIVERSAL ADAPTER (cod. AD-T)

Intended to be used with vials having a diameter of at least 22 mm.



The device Comfort-in™ can be also provided with caps (cod. CAP-01/CAP-02) for nozzle

The Caps are made of silicone material, they can be flat or curved and are used for a proper and comfortable positioning of the device on the gingiva during dental anesthesia or for areas of the body where the fat layer is particularly thin as hands, feet, knees, elbows and ankles.

PREPARATION:

1

Charge the device using the pressure lever/box.



2

Fill the needleless syringe (nozzle) using the adapters.



3

Screw the nozzle to the top of the device.



4

Rotate the device clockwise till you see the first droplet out of the nozzle.



5

Put the device Comfort-in at 90° respect the infusion site and gently press. After the infusion wait for 2/3 seconds keeping the Comfort-in well adherent to the treated site.



Produced by:

EU representative:



MIKAMEDICAL CO.
93 NOKSANSANEOP JUNG-RO,
GANGSEO-GU, BUSAN, REP. OF KOREA



Via Giovanni Verga, 27
95030 Sant'Agata Li Battiati (CT) - Italy
Tel. +39 0952938579 - Fax +39 0955183766
www.gamastech.com - info@gamastech.com