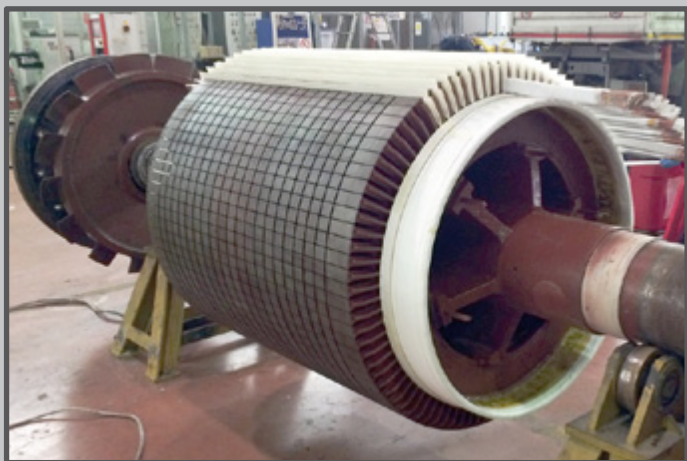


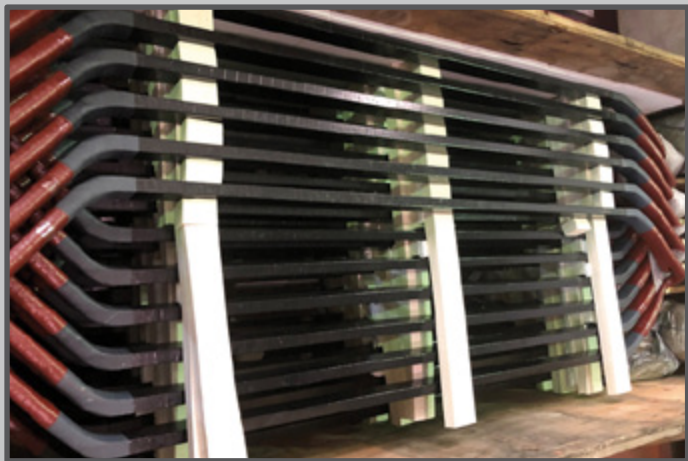


NUOVA I.T.E.S. SRL
IMPIANTI TECNOLOGICI
Elettromeccanici Service

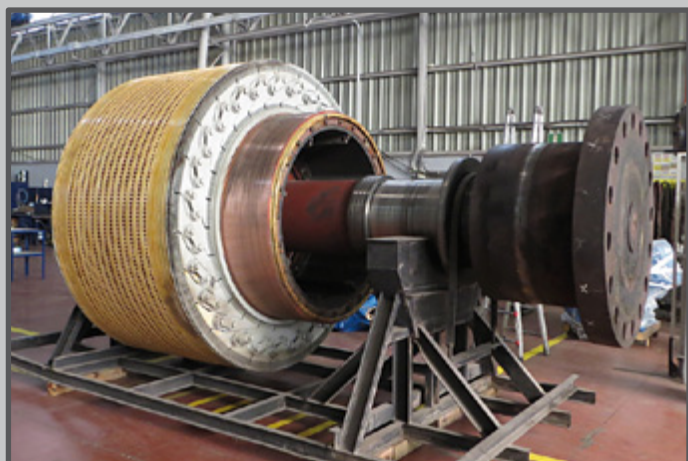


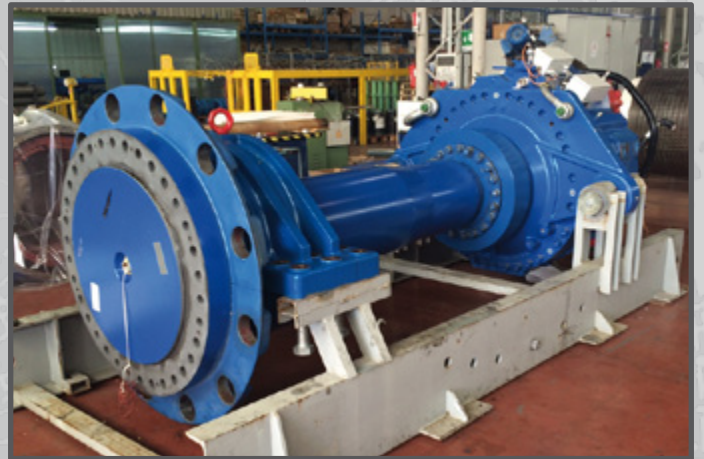
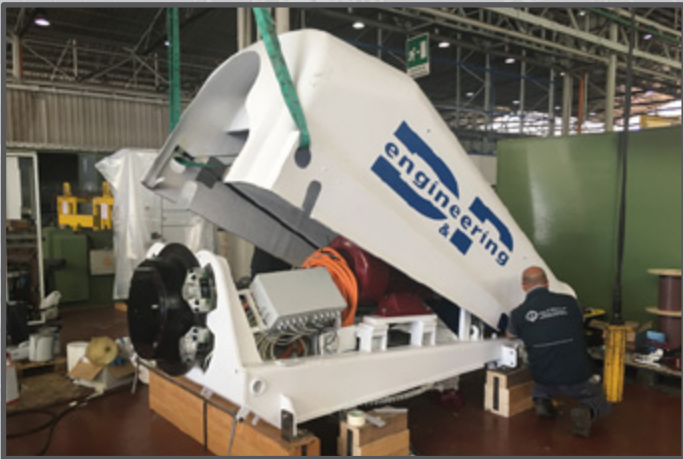


Manutenzione, riparazione e riavvolgimento di macchine elettriche rotanti in BT e MT, modifiche meccaniche, rifacimento di cuscinetti a metallo bianco, revisione, equilibratura dinamica, collaudo, impianti tecnologici, certificazioni su depotenziamento di aerogeneratori.

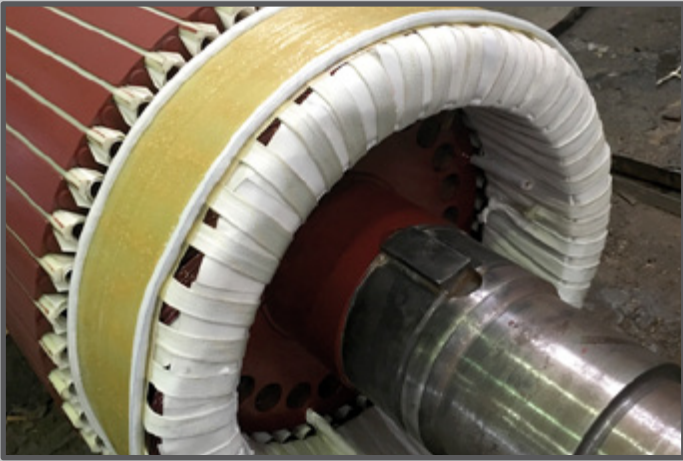


Maintenance, repair, rewinding, overhauling of electrical rotating machines, LV and MV, AC and DC, machining, refurbishment of Babbitt bearings, full tests, certifications on repowering of windturbines.





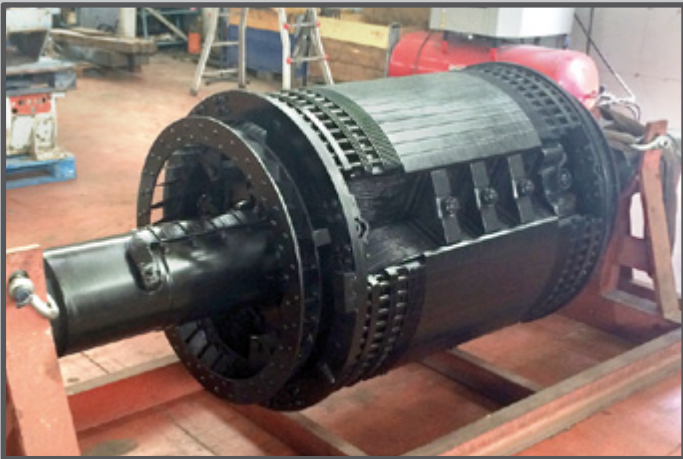
OFFICIAL PARTNER OF



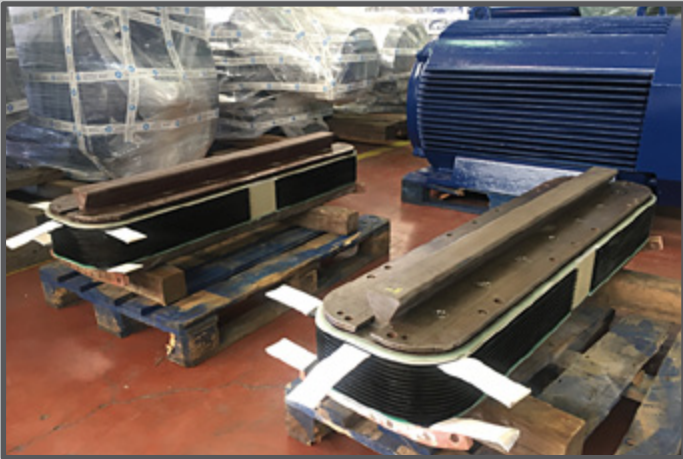
Vestas®

enel
Green Power

edp renewables



Rating di
Legalità ★++



Nuova I.T.E.S. srl

Ufficio e stabilimento - Office & Factory:
Via G. Galanti n. 2 - 74123 Taranto (TA) Italy
Recapito postale - Mailing address:
Casella Postale 575 AG. 12 - 74100 Taranto
Tel. +39 099 4725881 - Fax +39 099 4729154
Iscritta nel registro delle imprese di Taranto
P.IVA - C.F. - VAT: 02934390739 - REA: 180347
info@iteselettromeccanica.it - PEC nuovaites@pec.it
www.iteselettromeccanica.it

