



EUROPEAN EVOLUTION OUTSOURCER



We manage the Internet Of Things

Suite AskQ 2.5

www.mvsinternational.eu



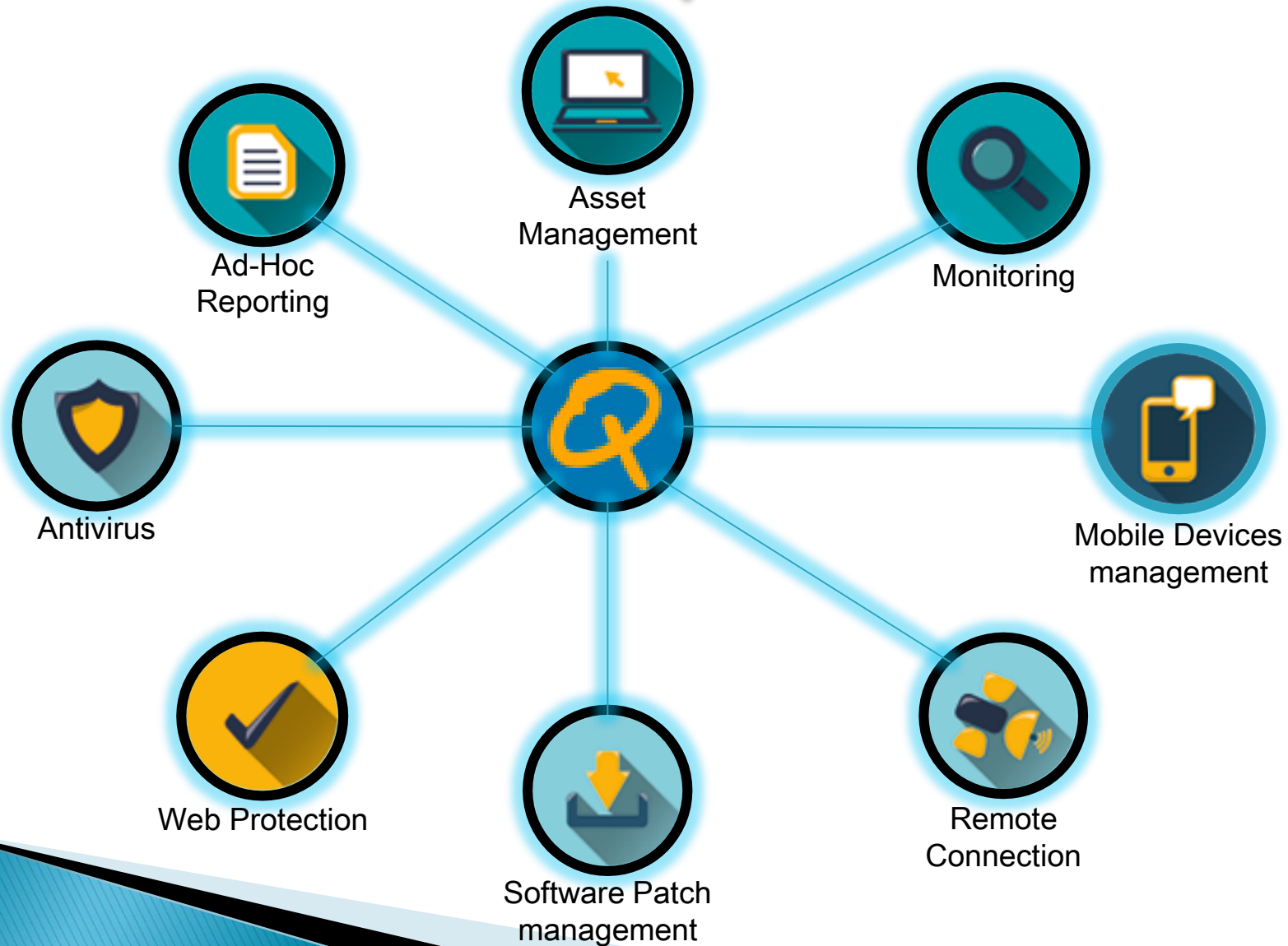
Offered Services

- ▶ Service Support available 24/7 x 365 days/year
- ▶ Helpdesk reachable through a dedicated toll-free number
- ▶ Open your ticket and assistance requests with one simple click
- ▶ Tailormade solutions based on your needs
- ▶ Wherever you clients are based, we will be there for you

Customizable Taskbar enable access easily and intuitively



A unified solutions platform



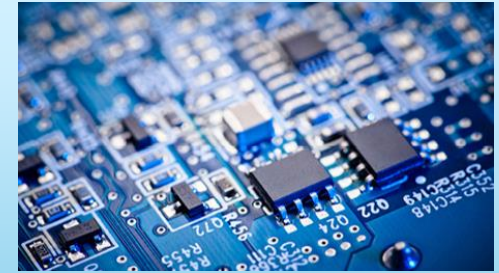


Asset Management

- ▶ Complete traceability of all corporate assets
- ▶ Detailed info on both Hardware and Software

HARDWARE

- ❖ Complete list of all HW components and peripherals
- ❖ Complete List of all PC clients serials
- ❖ Traceability of all HW amendments and updates
- ❖ ...



SOFTWARE

- ❖ Complete list of all installed SW
- ❖ List and active management of all SW licenses
- ❖ Traceability of all SW amendments and updates
- ❖ ...



All you asset details available in just a click, up to date and in real time



Asset Management

- ▶ Customizable traceability fields
- ▶ Monitoring of the SW licenses compliancy
- ▶ Active detection of all connected assets

Modifica Rapporti Impostazioni

Tracciabilità asset

MVS NFR Computer

Sito	Nome	Nome utente	O/S	Service Pack	Ruolo	IP
NFR	A01290DT	A01290DT\huser	7 Professional	1	Workstation autonoma	158.98.241.196
NFR	MANUEL-PC	Manuel-PC\Lavoro	7 Professional	1	Workstation autonoma	10.158.32.119
NFR	A01395DT	test	7 Professional	1	Workstation membro	192.168.58.1

Riepilogo Hardware Software Software con licenza Hotfix installati Aggiornamenti installati Patch

MVS NFR A01290DT (HD)

LENOVO 3493KQG

Ruolo: Workstation autonoma
 IP: 158.98.241.196 (74:27:EA:E0:3A:9F)
 Ultimo aggiornamento: 30-ago-2015 11:16
 Numero di serie: PBK7B7X
 Nome: Emanuele
 Cognome: Beatrice
 Telefono Fisso: 0397215622
 Telefono Cellulare: 3562358921
 Indirizzo Email: e.beatrice@mvsitaly.com

Microsoft Windows 7 Professional Service Pack 1 (build 7601)
 Numero di serie Windows: 00371-OEM-8992671-00437
 Codice "Product Key" Windows: 237XB-GDJ7B-MV8MH-98QJM-24367
 Installata: 12-feb-2014

Intel(R) Pentium(R) CPU G2030 @ 3.00GHz (3,00 GHz, 512 KB cache di secondo livello)
 BIOS LENOVO BIOS Rev: F1KTS4A 0.0: LENOVO - 1540, F1KTS4AUS
 4096 MB RAM
 WDC WD5000AAKX-08U6AA0 465,76GB IDE

A01290DT (HD)

LENOVO 3493KQG

Ruolo: Workstation autonoma
 IP: 158.98.241.196 (74:27:EA:E0:3A:9F)
 Ultimo aggiornamento: 30-ago-2015 11:16
 Numero di serie: PBK7B7X
 Nome: Emanuele
 Cognome: Beatrice
 Telefono Fisso: 0397215622
 Telefono Cellulare: 3562358921
 Indirizzo Email: e.beatrice@mvsitaly.com

Microsoft Windows 7 Professional Service Pack 1 (build 7601)
 Numero di serie Windows: 00371-OEM-8992671-00437
 Codice "Product Key" Windows: 237XB-GDJ7B-MV8MH-98QJM-24367
 Installata: 12-feb-2014

Intel(R) Pentium(R) CPU G2030 @ 3.00GHz (3,00 GHz, 512 KB cache di secondo livello)
 BIOS LENOVO BIOS Rev: F1KTS4A 0.0: LENOVO - 1540, F1KTS4AUS
 4096 MB RAM
 WDC WD5000AAKX-08U6AA0 465,76GB IDE

Riepilogo Hardware Software Software con licenza Hotfix installati Aggiornamenti installati Patch

AMDSI Flero ARMDAH090026 (MONZA)

Nome	Dettagli	Produttore	Stato
Intel(R) Core(TM) i3-2120 CPU @ 3.30GHz	3,30 GHz, 512 K...	GenuineIntel	OK
0F6XSP	Numero di serie:...	Dell Inc.	OK
Default System BIOS	DELL - 6222004	Dell Inc.	OK
2,00GB Memoria fisica	Capacità: 2048...	-	-



Remote Connection

- ▶ Remote Access thanks to tool such as Take Control & Remote Background
- ▶ Quick Support, immediate remote connections even through Firewalls
- ▶ Highly secured connections, with minimum impact on the bandwidth

Server	Workstation	Dispositivi mobili	Servizi	Reti	Attività automatiche sito
Workstation Take Control Background remoto Colonne					
	Cliente	Sito	Workstation	Descrizione	
	ArcelorMittal CLN	Rieti	ARMDAH090053	CSC	
	ArcelorMittal CLN	Rieti	ARMDAH090054	CSC	

Rapporto Take Control: 01 ago 2015 - 31 ago 2015

Cliente: ArcelorMittal CLN

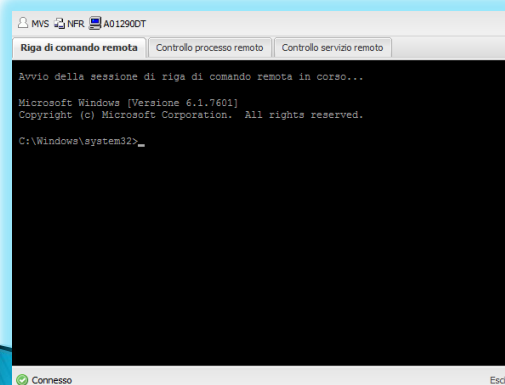
Sito: Check-in

Dispositivo: ARMDCLNDN7V65J

Utente dashboard	Richiesta sessione
docmarv14@gmail.com	03 Aug 2015 16:30:46
docmarv14@gmail.com	04 Aug 2015 11:52:37

Ad-Hoc Reporting capability

Remote Access 24/7 without necessity of on-site presence



File System Management

MVS NFR A01290DT

Riga di comando remota Controllo processo remoto Controllo servizio remoto

Processo Cancella filtri

Nome immagine	PID	Nome utente	C...	Memoria (wo... T...	Descrizione
AcroRd32.exe	6...	A01290DT\hdu...	00	15,280 K	10 Adobe Reader
AcroRd32.exe	6...	A01290DT\hdu...	00	286,276 K	18 Adobe Reader
armsvc.exe	1...	SYSTEM	00	1,192 K	4 Adobe Acrobat Update Service
aruser.exe	6...	A01290DT\hdu...	00	62,544 K	13 BMC Remedy User Application
audodlg.exe	6...	SERVIZIO LOC...	00	17,688 K	12 audodlg.exe
CamMute.exe	2...	SYSTEM	00	1,472 K	5 Camera Mute Control Service for ...
chrome.exe	5...	A01290DT\hdu...	00	32,388 K	9 Google Chrome
chrome.exe	6...	A01290DT\hdu...	00	101,392 K	30 Google Chrome
chrome.exe	6...	A01290DT\hdu...	00	55,076 K	9 Google Chrome
chrome.exe	6...	A01290DT\hdu...	00	241,376 K	15 Google Chrome
chrome.exe	6...	A01290DT\hdu...	00	60,872 K	5 Google Chrome
chrome.exe	6...	A01290DT\hdu...	00	151,524 K	10 Google Chrome
chrome.exe	6...	A01290DT\hdu...	00	81,448 K	11 Google Chrome

Visualization and Management of all active processes

MVS NFR A01290DT

Riga di comando remota Controllo processo remoto Controllo servizio remoto

Servizio Cancella filtri

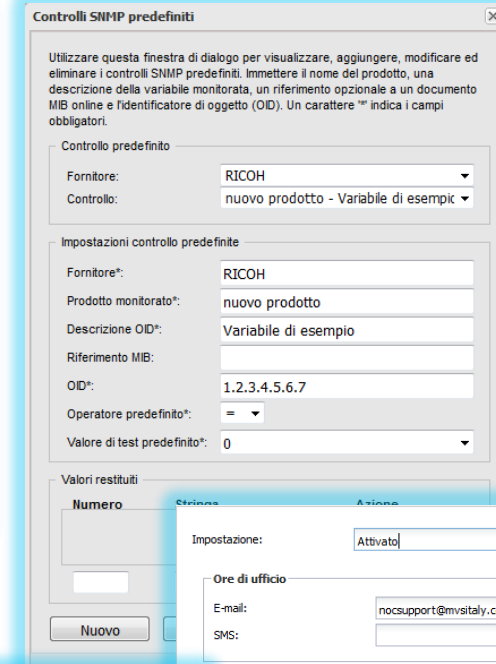
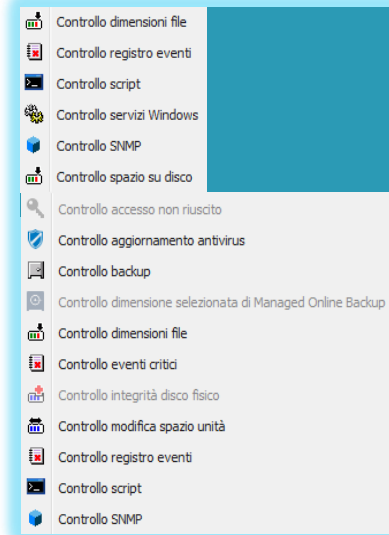
Nome	Stato	Tipo di avvio	Accedi come
Accesso dispositivo Human Interface	In esec...	Manuale (...)	Local Syst...
Accesso rete		Manuale	Local Syst...
Accesso secondario		Manuale	Local Syst...
Acquisizione di immagini di Win...	In esec...	Automatico	Local Servi...
ActiveX Installer (AxInstSV)		Manuale	Local Syst...
Adobe Acrobat Update Service	In esec...	Automatico	Local Syst...
Adobe Flash Player Update Se...		Manuale	Local Syst...
Advanced Monitoring Agent	In esec...	Automatico	Local Syst...
Advanced Monitoring Agent N...	In esec...	Automatico	Local Syst...
Agente criteri IPsec	In esec...	Manuale (...)	Network S...
Agente mapping endpoint RPC	In esec...	Automatico	Network S...
Agente protezione accesso all...		Manuale	Network S...
Alimentazione	In esec...	Automatico	Local Syst...

Service Configuration-Monitoring and Management

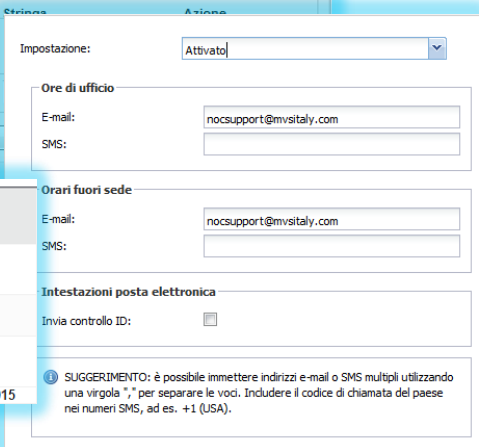


Monitoring

- ▶ Remote Servers
- ▶ Printers Network (SNMP)
- ▶ Websites
- ▶ Mobile Devices
- ▶ Cloud Applications
- ▶ Workstations
- ▶ Virtual Machines
- ▶ Active monitoring of all notifications (e-mail, SMS) with customizable setting of the events to be monitored
- ▶ Support Ticket Automatic creation
- ▶ Ad-hoc reporting (weekly or monthly)



Sito	Dispositivo	Descrizione	mar	mer	gio	ven	sab	dom	lun	agosto 2015
NFR	A01290DT	Emanuele Beatrice	×	×	×	×	×	×	×	
NFR	A01395DT	it090168	×	×	×	×	×	×	×	
NFR	MANUEL-PC	Manuel PC	×	×	×	×	×	×	×	✓
			agosto 2015	25	26	27	28	29	30	31



Maximum detail level of monitoring VS Minimum complexity



Mobile Devices Management

- ▶ Asset Traceability and GPS
- ▶ List installed APP
- ▶ Data usage, calls and msg monitoring,
- ▶ Remote Configuration, e-mail and wi-fi access
- ▶ Location tracking
- ▶ Remote block and access codes setting
- ▶ Remote device formatting and data erase
- ▶ Security settings detailed configuration
- ▶ Camera Block
- ▶ ...

mi 4 • Android, 4.4.4 (build 5.8.27) • App v1.0.0

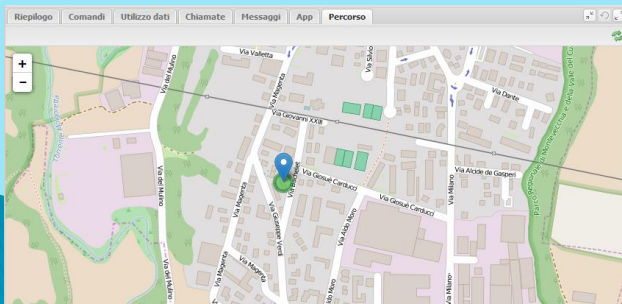
Funzioni supportate	
✓ Utilizzo dati dispositivo mobile - Attivo	
✓ Cronologia messaggi - Attivo	
✓ Informazioni archiviazione - Attivo	
✓ App installate - Attivo	
✓ Configura limitazioni - Attivo	
✓ Informazioni di base sul dispositivo - Attivo	
✓ Cronologia chiamate - Attivo	
✓ Blocco remoto - Attivo	
✓ Trova dispositivo - Attivo	
✓ Cancellazione remota dispositivo - Attivo	
✓ Imposta codice - Attivo	
✓ Cancella codice - Attivo	
✓ Configura Wi-Fi - Inattivo	
✓ Configura passcode - Inattivo	

Rete corrente	
Operatore di rete	-
Tipo	-

Schede SIM	
ICCID	8939992280216149228f
IMEI	864895022907552
Operatore di rete	-
Type	GSM

Roaming dati	
Roaming dat	Disabilitato

Wi-Fi	
Stato	Abilitato
Indirizzo MAC	0c:1d:af:c7:41:2e



Wi-Fi		
Aggiungi	Modifica	Rimuovi
Identificatore del set di servizi (SSID)	Tipo di sicurezza	
ASUS_RPT5G	WPA	
ASUS	WPA	
ASUS_SG	WPA	
ASUS_RPT	WPA	

Modifica criterio Android

Impostazioni generali	
Utilizzo	
Reti	
Protezione	

Remuovi configurazione

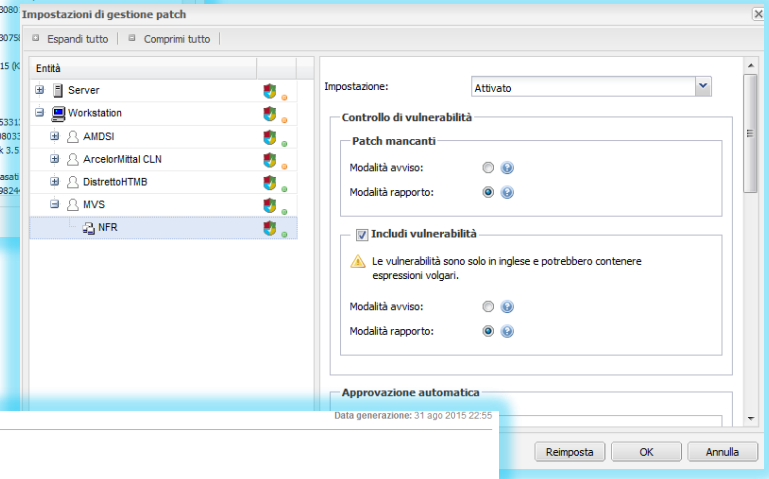
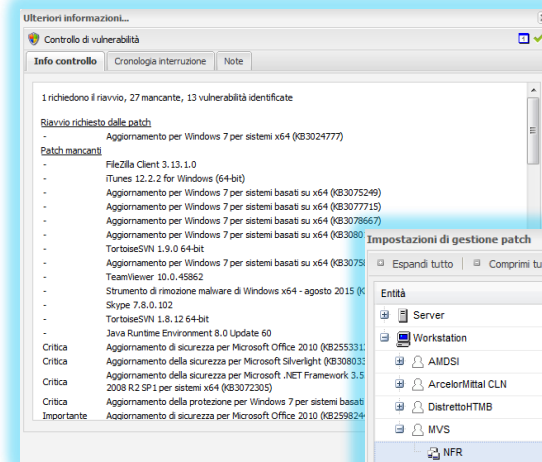
Tipo di passcode:	Password con PIN numerico
Lunghezza minima codice:	10
Età massima codice:	
Blocco automatico massimo:	Non bloccare mai in automatico
Cronologia codice:	
Numero massimo di tentativi non riusciti prima della cancellazione:	11

Salva Chiudi



Software Patch Management

- ▶ Missingpatch scan
- ▶ System security issues scan
- ▶ Microsoft sw complete update support
- ▶ Other SW vendor support(Java, Mozilla, Adobe, ecc...)
- ▶ Patch approval criteria setting
- ▶ Time planning of updates release
- ▶ Workstation automatic restart planning
- ▶ Single/Multiple workstation Update/Patch installation
- ▶ Ad-hoc reporting on update status of the MIF



Rapporto di riepilogo Gestione Patch

MVS
 Sito: NFR
 Dispositivo: A01290DT

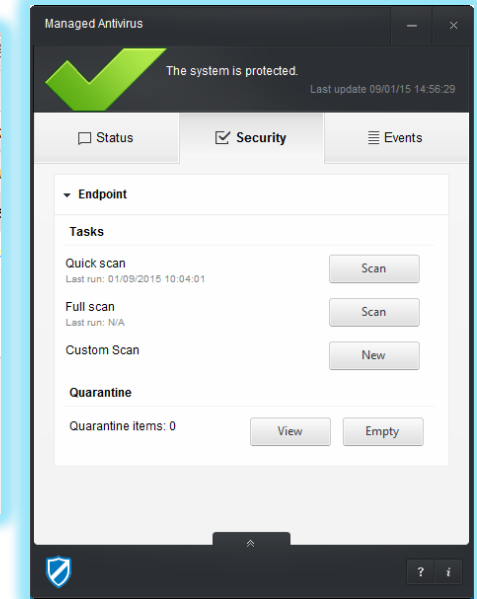
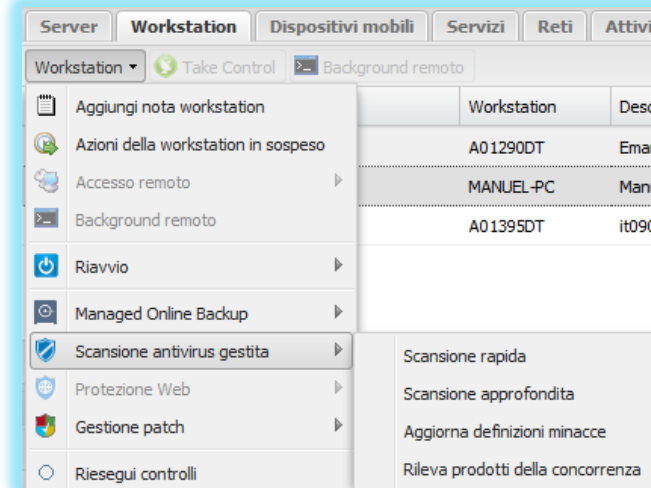
Mancante	Data rilevazione/installazione
Aggiornamento per Windows 7 per sistemi basati su x64 (KB3077715)	20-ago-2015
Aggiornamento per Windows 7 per sistemi basati su x64 (KB3080149)	20-ago-2015
Aggiornamento per Windows 7 per sistemi basati su x64 (KB3075249)	20-ago-2015
Aggiornamento per Windows 7 per sistemi basati su x64 (KB3078667)	20-ago-2015
Internet Explorer 10 per Windows 7 per sistemi basati su x64	12-ago-2015
Aggiornamento per Microsoft Office Outlook 2007 Junk Email Filter (KB3055023)	12-ago-2015
Strumento di rimozione malware di Windows x64 - agosto 2015 (KB896030)	12-ago-2015
Aggiornamento per Windows 7 per sistemi basati su x64 (KB3075851)	07-ago-2015
Aggiornamento per Windows 7 per sistemi basati su x64 (KB2952664)	07-ago-2015
Aggiornamento per Windows 7 per sistemi basati su x64 (KB3020336)	05-ago-2015

Obsolete or missing Patches, Security Issues ? No longer a problem



Antivirus

- ▶ Antivirus management dedicated dashboard
- ▶ External peripheral Scan
- ▶ Anti-malware scan
- ▶ E-mail virus attack notifications
- ▶ Fully customizable reporting
- ▶ Intuitive and simple user interface
- ▶ Quarantine file management from teh dashboard
- ▶ Remote scan capability
- ▶ Light but extremely effective antivirus
- ▶ Immediate recognition of the 99% of the eisting viruses
- ▶ Reconize up to 98% of the Zero day threats
- ▶ No positive fake captured in teh performed tests



Optimum performance, total protection, light package thus no impact on system performance



WEB Protection

- ▶ Protect end-user from websites that inoculate malware, proxy, spyware, adware, botnet and perform phishing and spam
- ▶ Apply centrally and contemporarely contents filter over a wide selection of websites
- ▶ Web browsing policy enforcement especially studied for professional environments
- ▶ Websites black-list easy management
- ▶ Bandwidth monitoring and set-up of warning levels with automatic notifications of those leves reach
- ▶ Web-access configuration fully customizable based on working hours

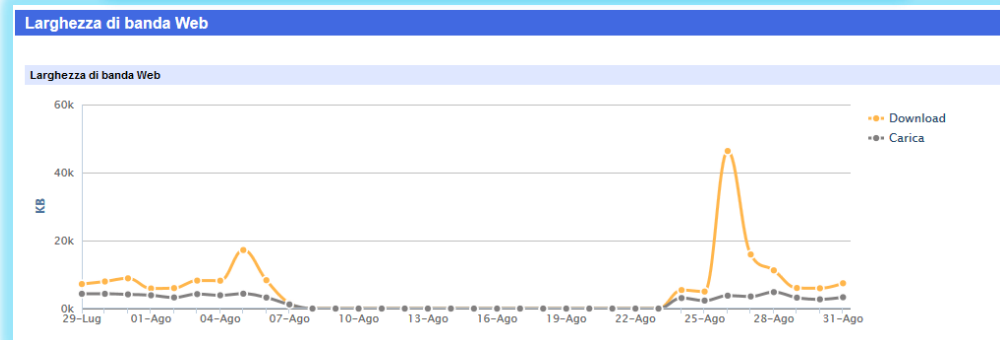
Generale		Consenti	Blocca	Pianificazione
Sicurezza Web				
Filtro web				
Whitelist sito web				
Blacklist sito web				
Pianificazione				
Controlli				
Categoria		Azione		
Protezione		-		
Siti di malware		-		
Phishing e altre frodi		-		
Proxy avoidance e anonymizer		-		
Spyware e adware		-		
Bot Net		-		
Origini Spam confermate		-		
URL di Spam		-		
Origini Spam non confermate		-		
Open HTTP proxy		-		

Pianificazione

Specificare in quali ore le categorie del sito web sono consentite o bloccate.

	0	2	4	6	8	10	12	14	16	18	20	22
Lun	▶	▶	▶	▶	▶	▶	▶	▶	▶	▶	▶	▶
Mar	▶	▶	▶	▶	▶	▶	▶	▶	▶	▶	▶	▶
Mer	▶	▶	▶	▶	▶	▶	▶	▶	▶	▶	▶	▶
Gio	▶	▶	▶	▶	▶	▶	▶	▶	▶	▶	▶	▶
Ven	▶	▶	▶	▶	▶	▶	▶	▶	▶	▶	▶	▶
Sab	▶	▶	▶	▶	▶	▶	▶	▶	▶	▶	▶	▶
Dom	▶	▶	▶	▶	▶	▶	▶	▶	▶	▶	▶	▶

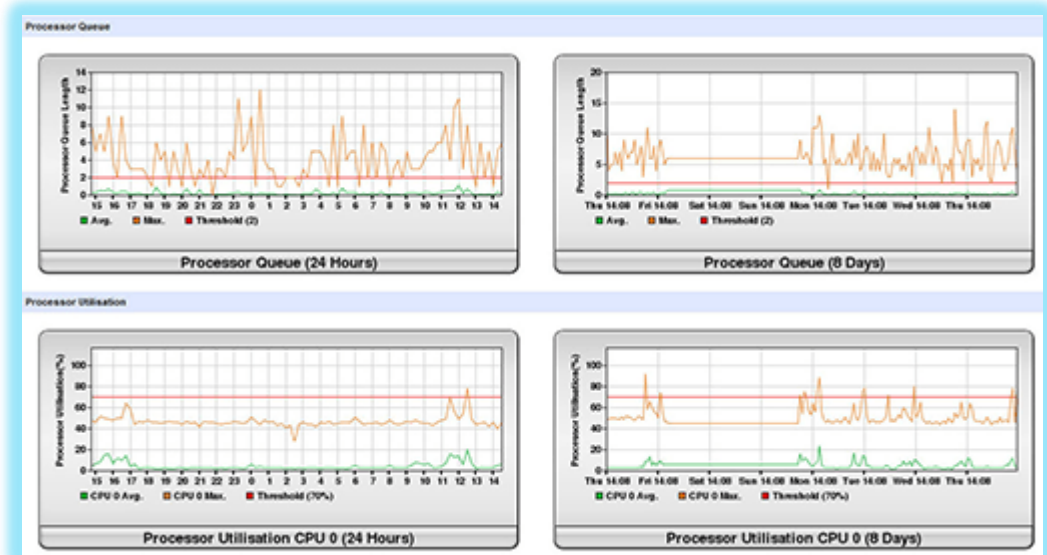
Consenti
 Blocca





Ad-hoc reporting

- ▶ System performance metrics
- ▶ System Health controls
- ▶ Bandwidth monitoring and performance
- ▶ SNMP monitoring
- ▶ System critical event chronology
- ▶ Complete status and performance reporting on Mobile Devices, Workstations and Servers
- ▶ Complete reports on system updates both on SW and HW





MVS
IT MANAGEMENT SOLUTIONS



We offer a trial fo the full package solution for 30 days,
please contact

Emanuele.Aco@mvsinternational.eu

