



lookbook

FALL - WINTER
2019-2020



STOLES

FANTASTICHERIA

The Wizard of Oz, The Jungle Book,
Alice in Wonderland, Pinocchio

PITTURE

Metropolitan Geometries, Moving Snails,
Rainbow Symphony, Strange Shape

BACCANO

Ribeca, Liuto, Clarsach, Cornamusa



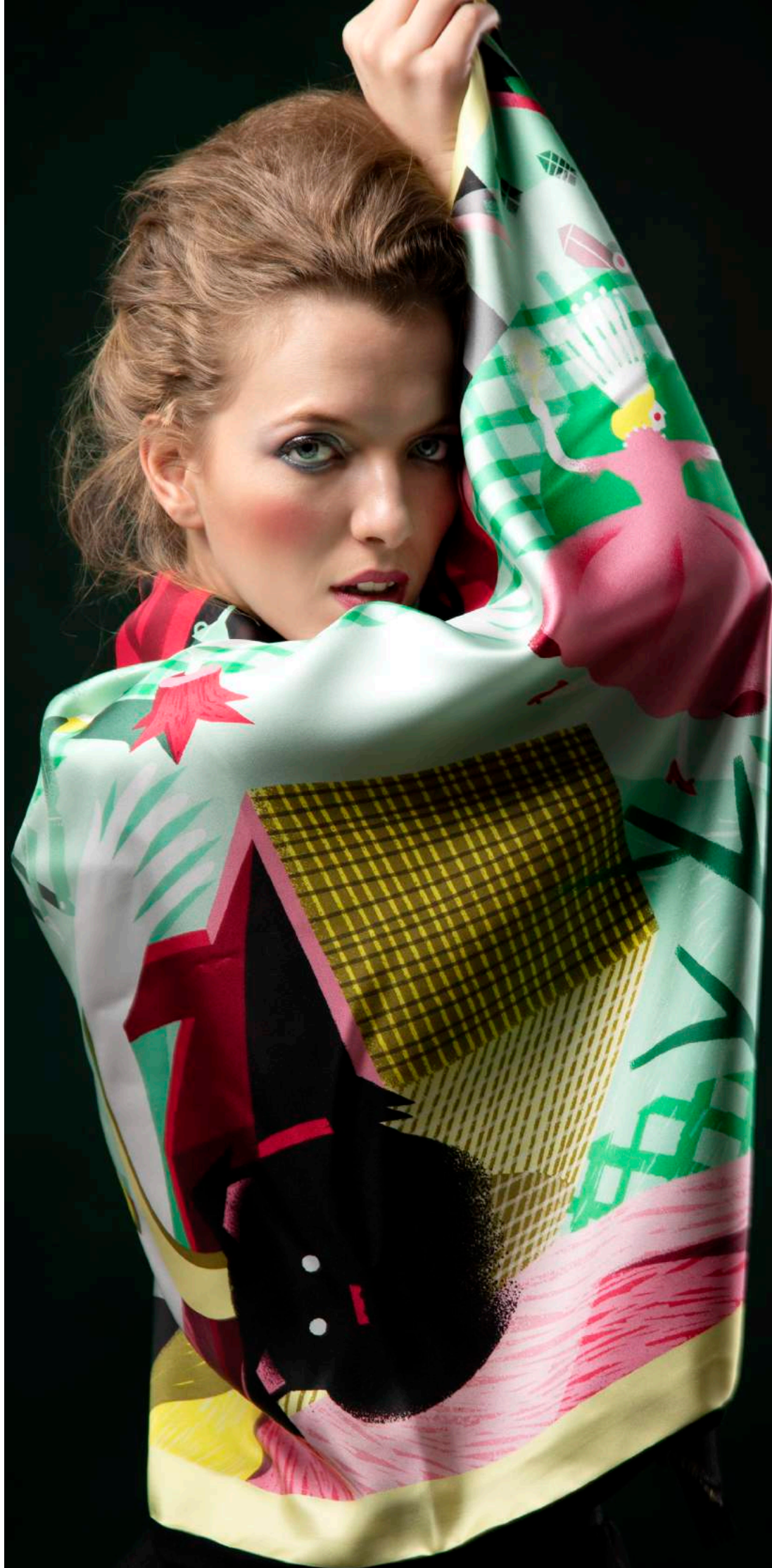


FANTASTICHERIA Collection

Double stoles made of precious silk twill assembled
with soft cashmere.



Four fairy tales illustrated on silk to carry in dreamlike and suggestive atmospheres
inside. Around the main protagonist of the fairy tale the scenes and characters of the
story develop on the stole through different color palettes for each.

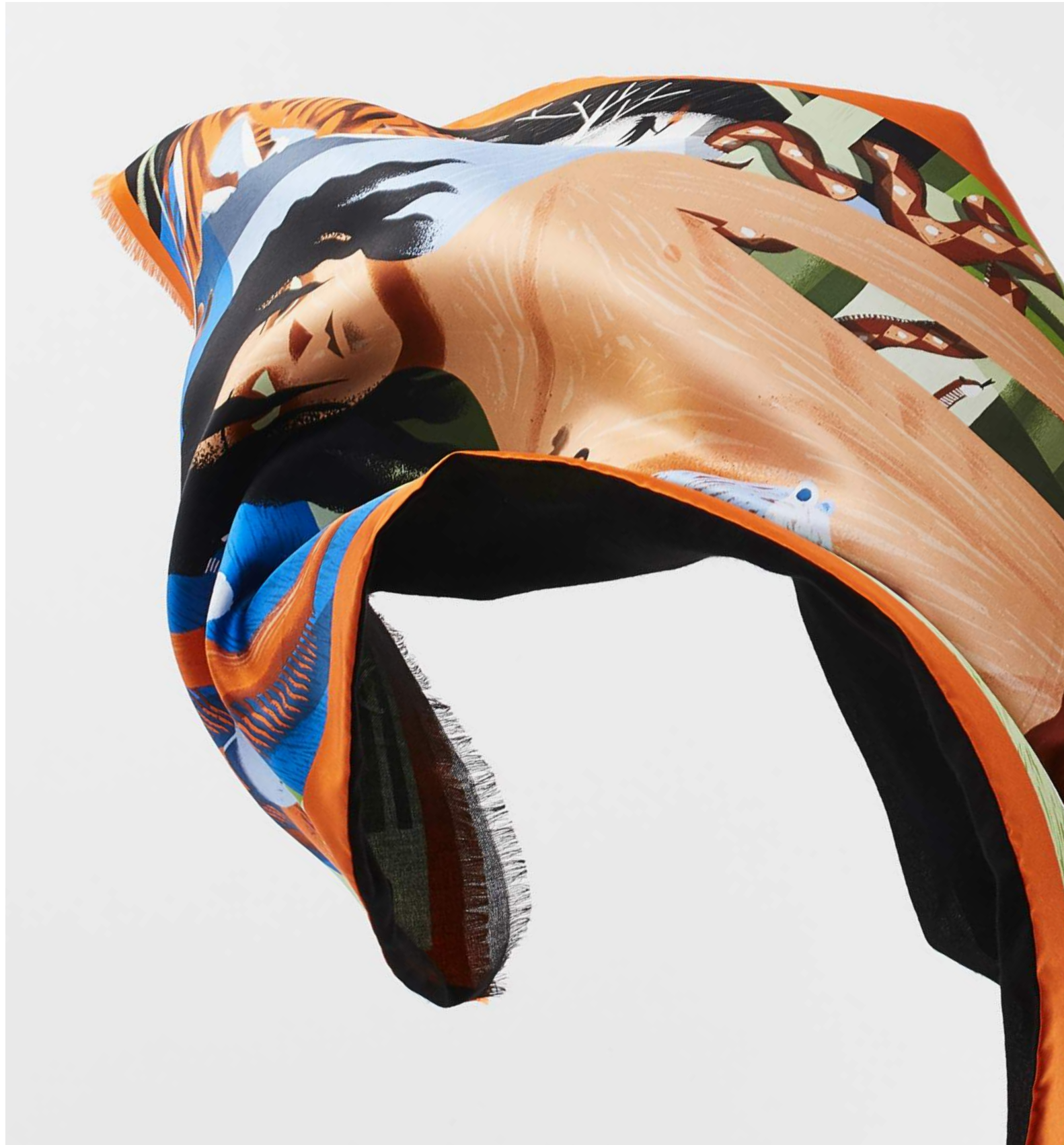


THE WIZARD OF OZ

CODE #413

Inspired by the magical adventures in the city
of Smeraldo, beyond the rainbow.





THE JUNGLE BOOK

CODE #414

Inspired by nature and the wild energy of the
animal world, free and independent.

ALICE IN WONDERLAND

CODE #411

Inspired by a fantasy world of strange and paradoxical creatures, a surreal dream.

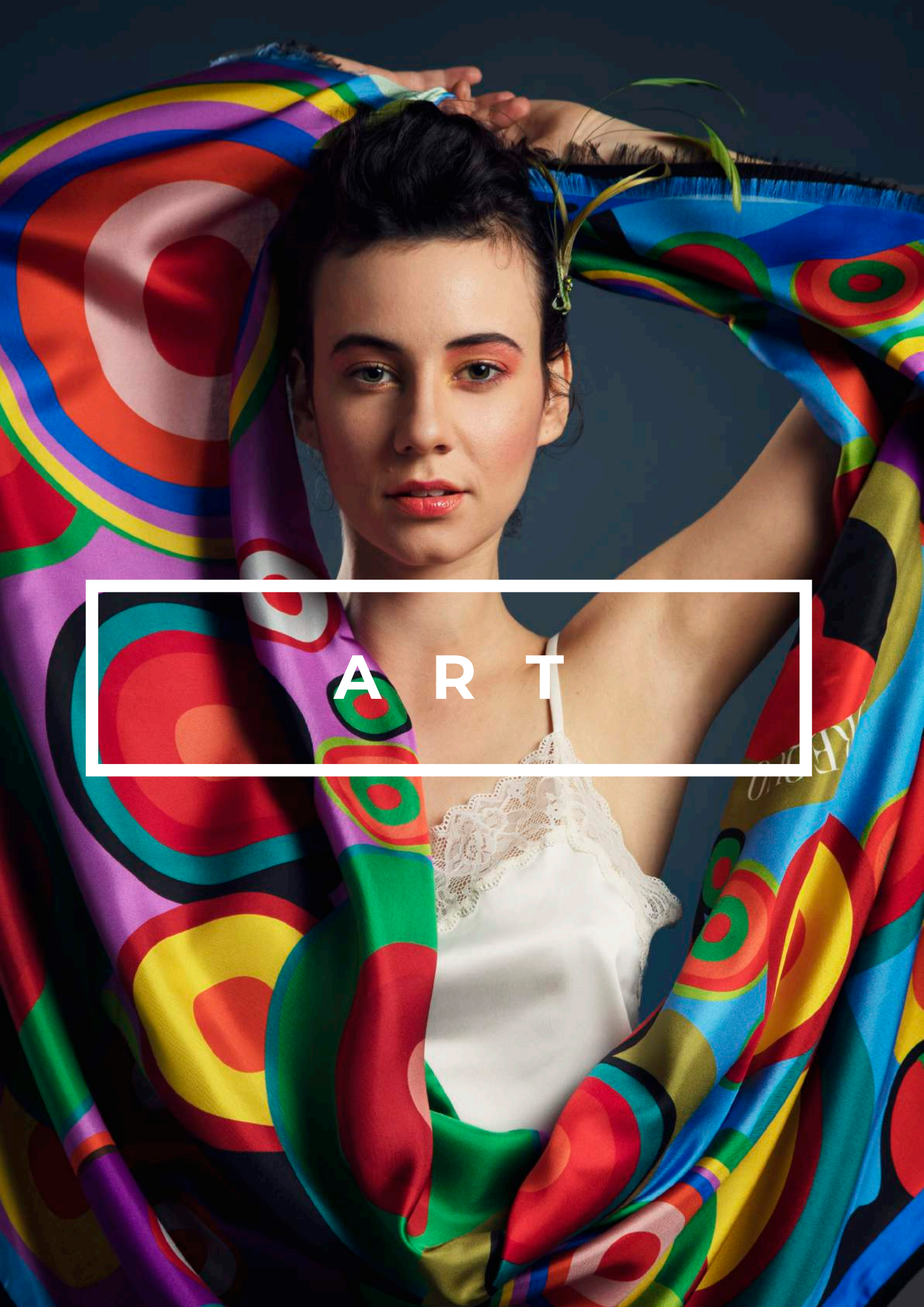


PINOCCHIO

CODE #412

Inspired by the fairy-tale events of the world's most famous puppet.





ART

PITTURE Collection

Double stoles made of precious silk twill
assembled with soft cashmere.



Four masterpieces by famous artists presented on silk. The elements of the works of art
of the current of abstract painting are taken up to be reproduced in another form. A
creative and modern reinterpretation of colors, spaces and lines.



METROPOLITAN GEOMETRIES

CODE #421

Inspired by Kandinskij's Composition VIII.
An orchestra of colors and geometries.

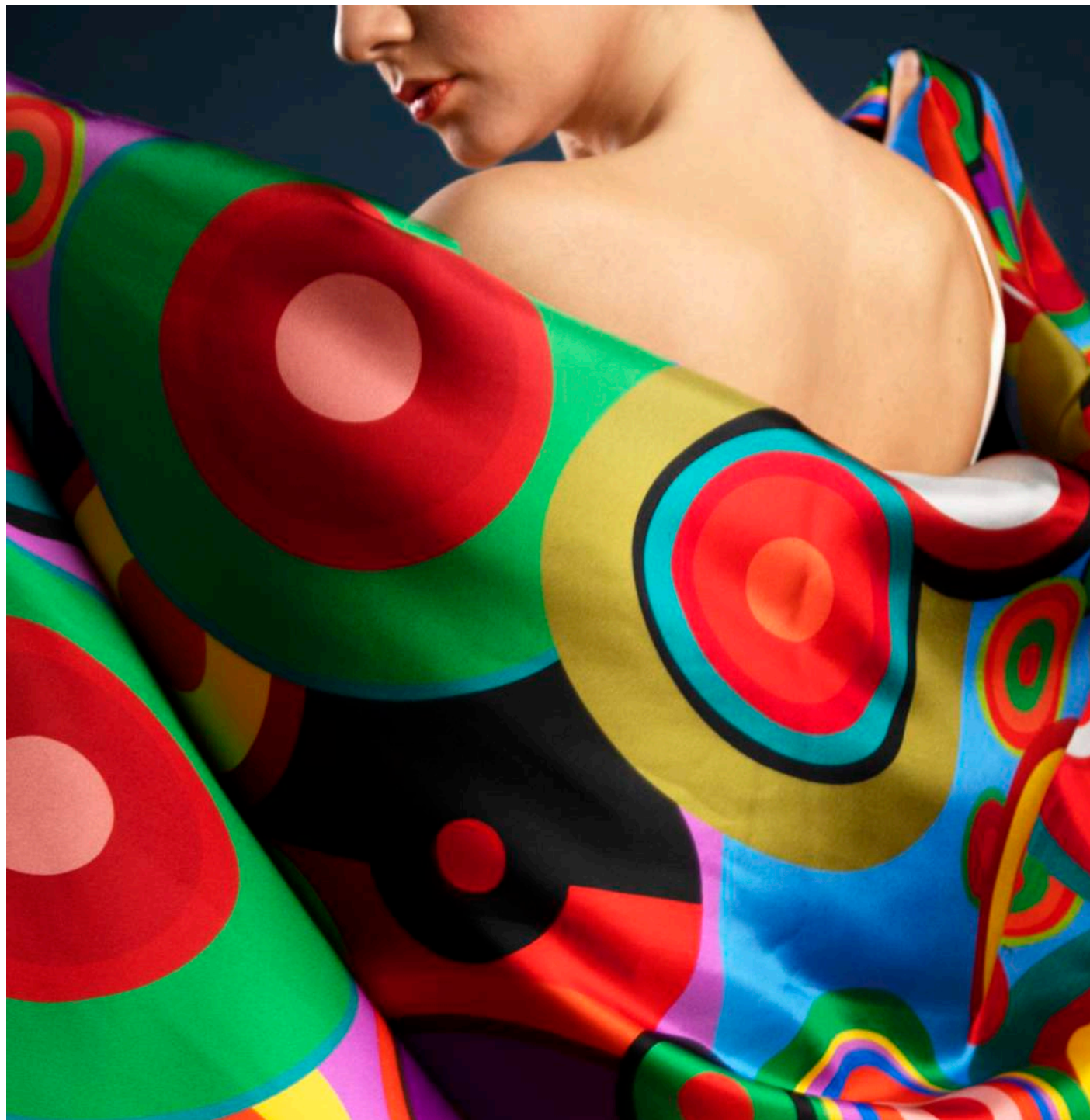


MOVING SNAILS

CODE #422

Inspired by Klimt's Tree of Life.
A mosaic of precious arabesques.

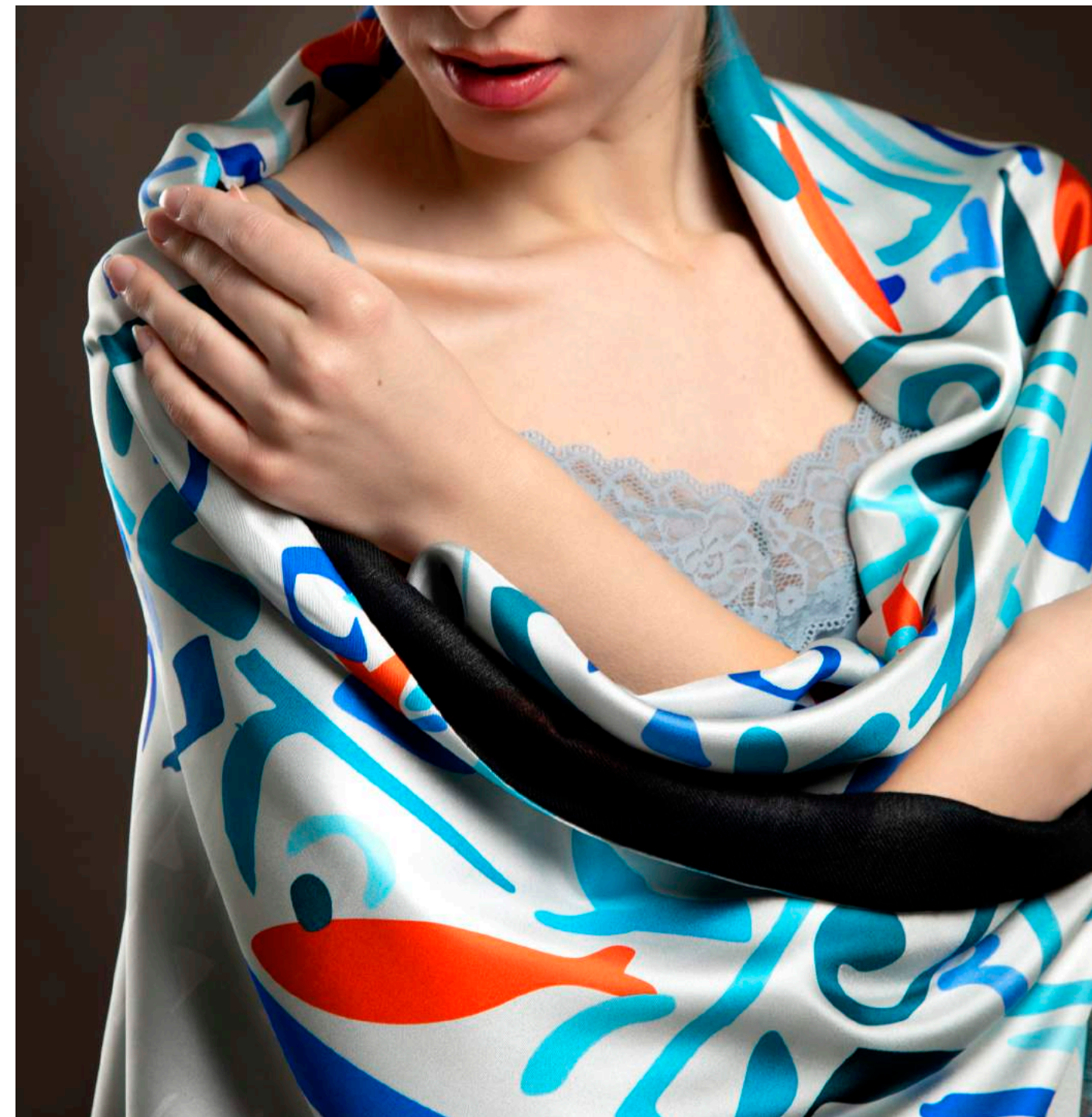




RAINBOW SYMPHONY

CODE #423

Inspired by Delaunay's Rhythm.
A rainbow of colors with an hypnotic charm.



STRANGE SHAPE

CODE #424

Inspired by Klee's Legend of the Nile.
Silhouettes and traits assembled in a narrative image.



MUSIC

BACCANO Collection

Double stoles made of precious silk twill
assembled with soft cashmere.

Four different medieval zoomorphic miniatures are composed as a decoration along the entire length of the silk. The designs present a background of colorful intertwining of branches and flowers almost to reflect the delicate and elegant liberty style.

RIBECA

CODE #432

Decoration of lynxes playing a ribeca, in a frame of
calla plant leaves and flowers.

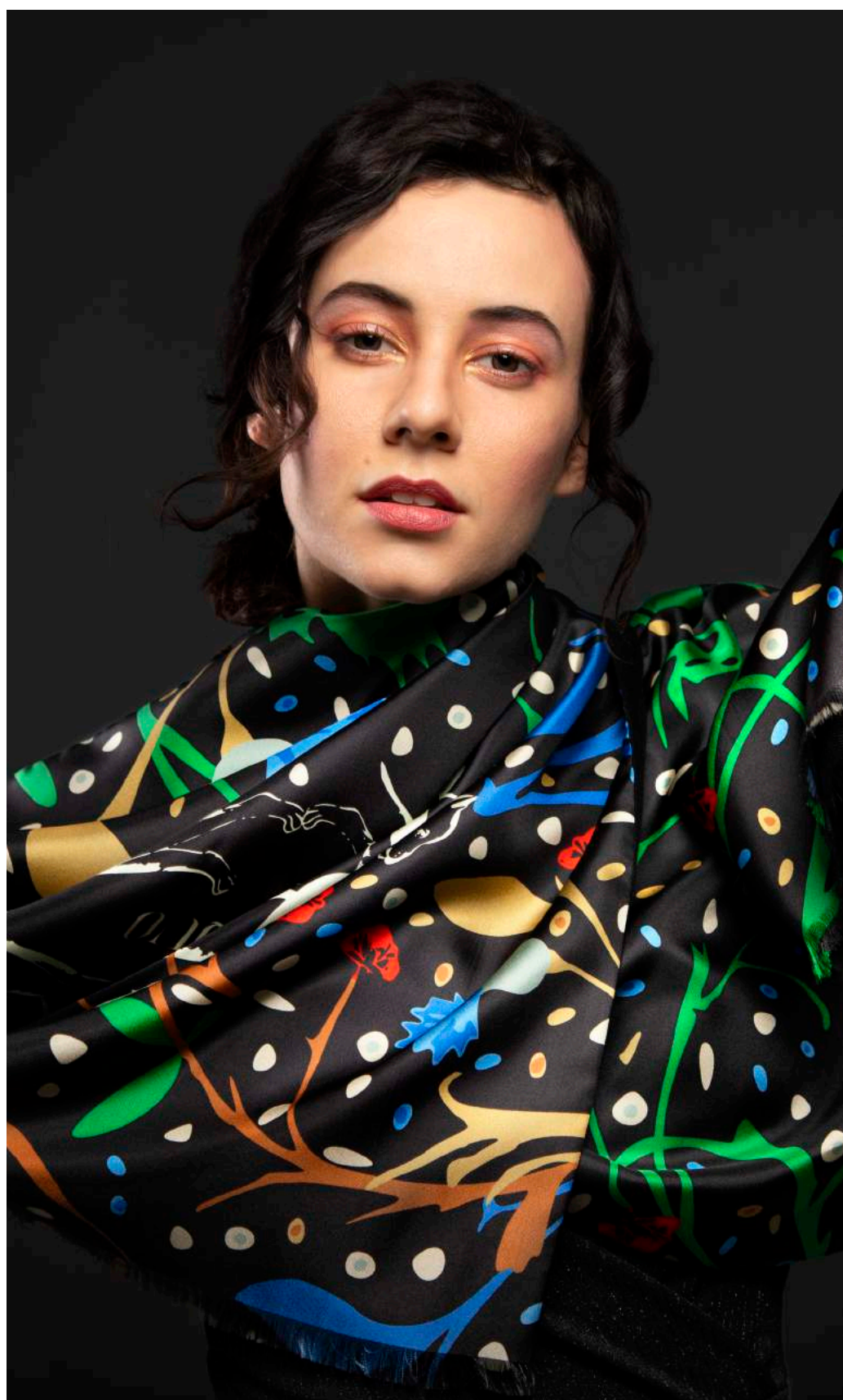


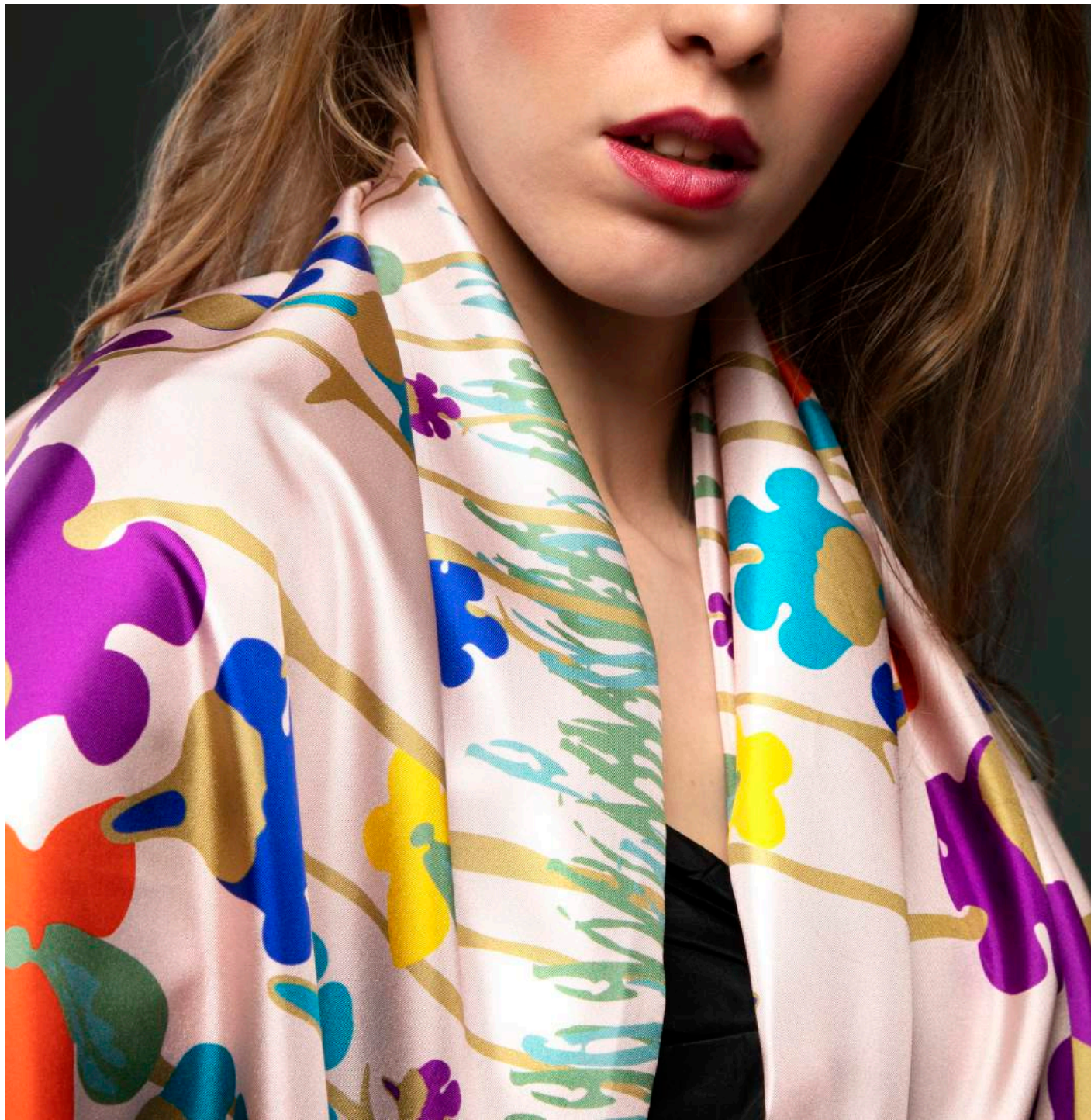
LIUTO

CODE #434

Decoration of cats playing a lute, among red
poppies and blue carnations.







CLARSACH

CODE #431

Decoration of monkeys playing a clarsach, surrounded by disproportionate colored violas.



CORNAMUSA

CODE #433

Decoration of cougars playing a bagpipe, inside tangles of holly.



FOULARD

MASCHERE

Colombina, Arlecchina, Silvia, Corallina

MUSE

Clio, Erato, Melpomene, Calliope

URBANA

Barcelona, London, Roma, Paris



SYMBOLS

MASCHERE Collection

Foulards made of twill silk, with iridescent reflections and bright colors.



Four female masks of the commedia dell'arte are flanked by birds and brightly colored flowers, elements of tropical landscapes that give a sensuality and an exotic charm. In the background a chessboard of geometric shapes with contrasting colors.





COLOMBINA

CODE #332

Inspired by Colombina, lively and smart figure of the Commedia dell'Arte.





ARLECCHINA

CODE #331

Inspired by Arlecchina, figure with many faces
like the facets of her dress.

SILVIA

CODE #334

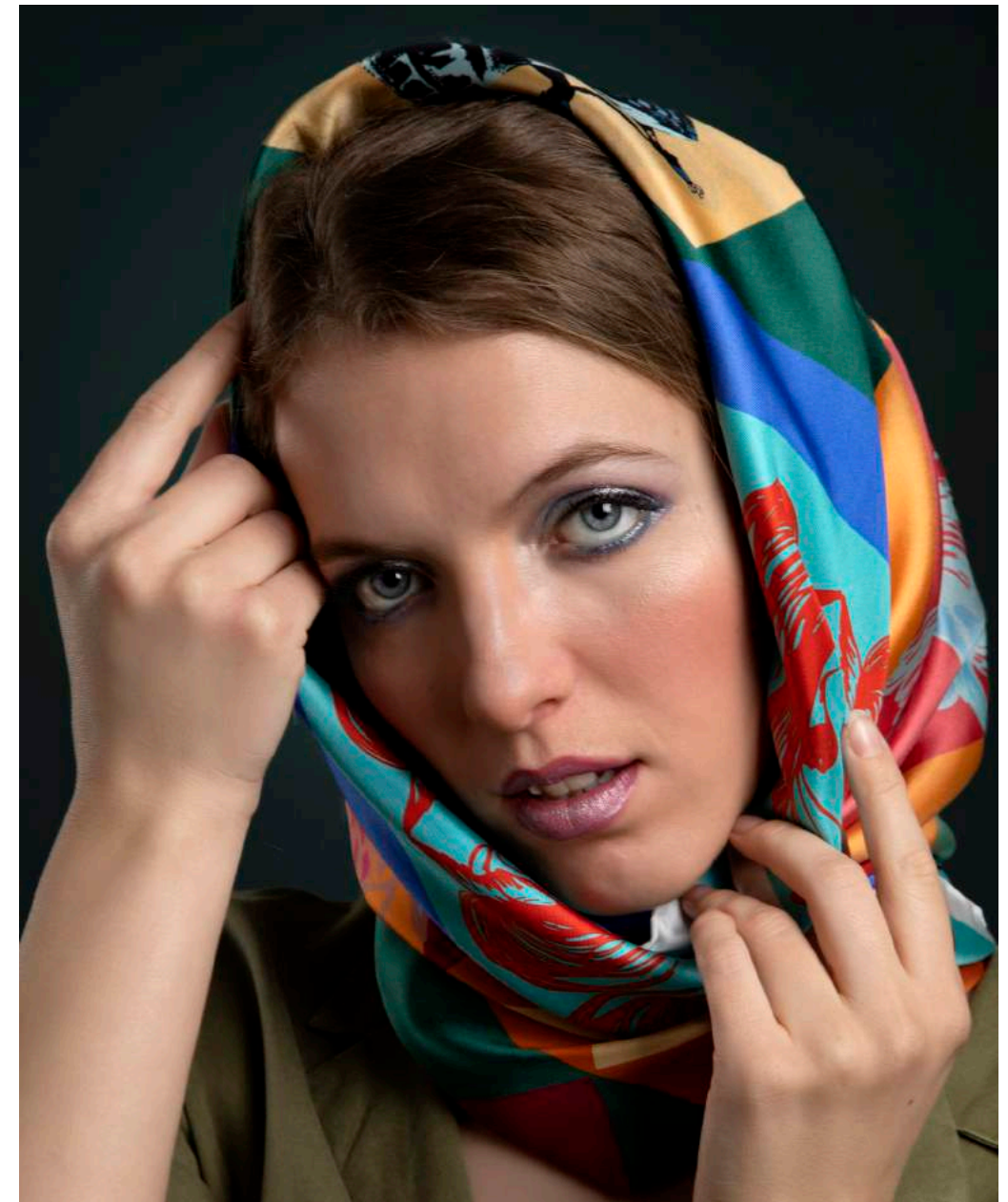
Inspired by the Young Lover, ideal, pure and naive female figure



CORALLINA

CODE #333

Inspired by Corallina, a bold and casual figure, a guide towards idyll.





MUSE collection

Foulards made of twill silk, with iridescent reflections and bright colors.



Designed to enhance the intriguing and enigmatic world of women embodied in four mythological figures, deliberately represented in black and white and inserted in one frame of geometric patterns in vibrant colors.



CLIO

CODE #322

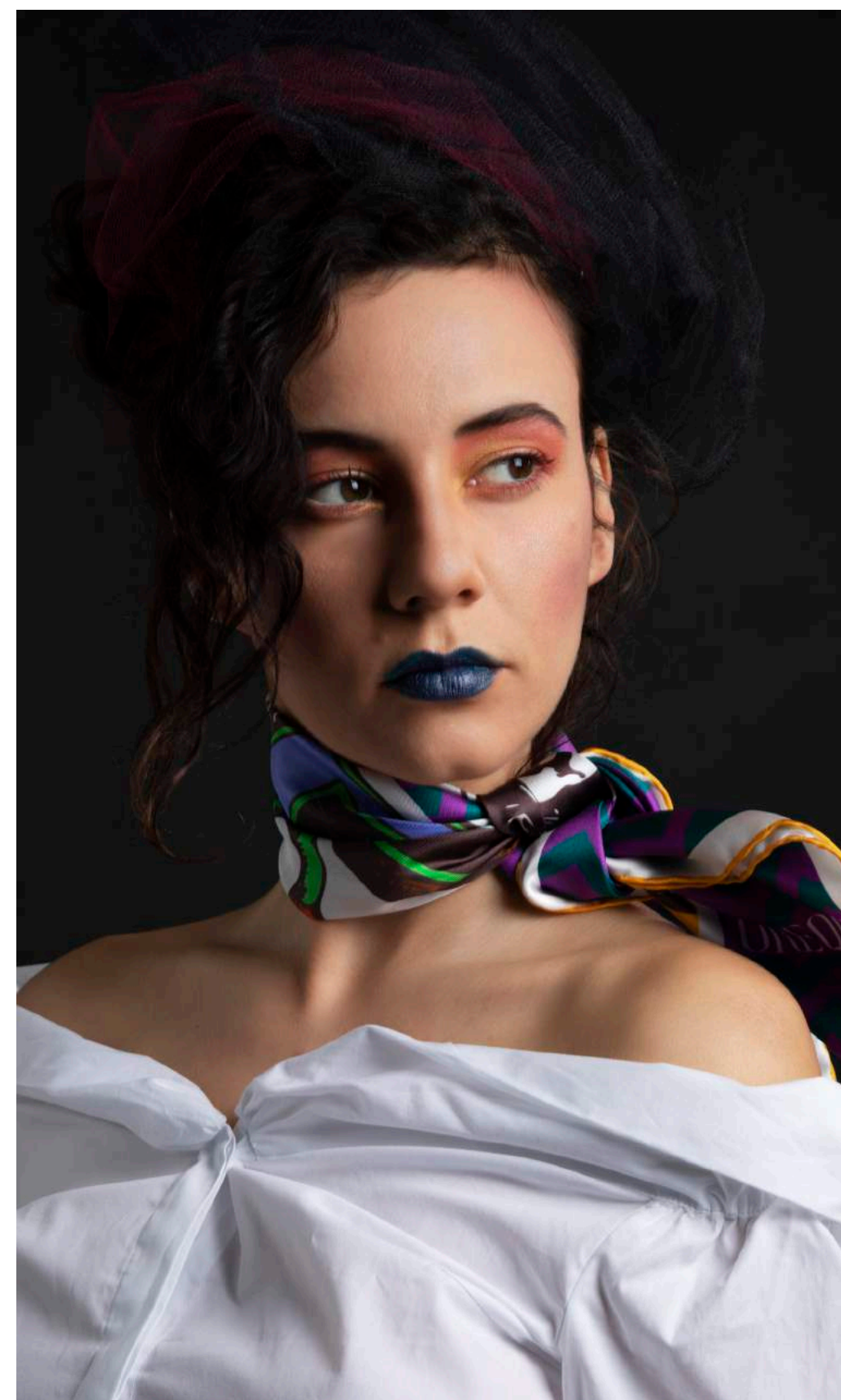
Inspired by Clio, muse of history, surrounded by a chevron texture in contrasting colors.



ERATO

CODE #323

Inspired by Erato, muse of love poetry, within a mosaic of circles and rhombuses.

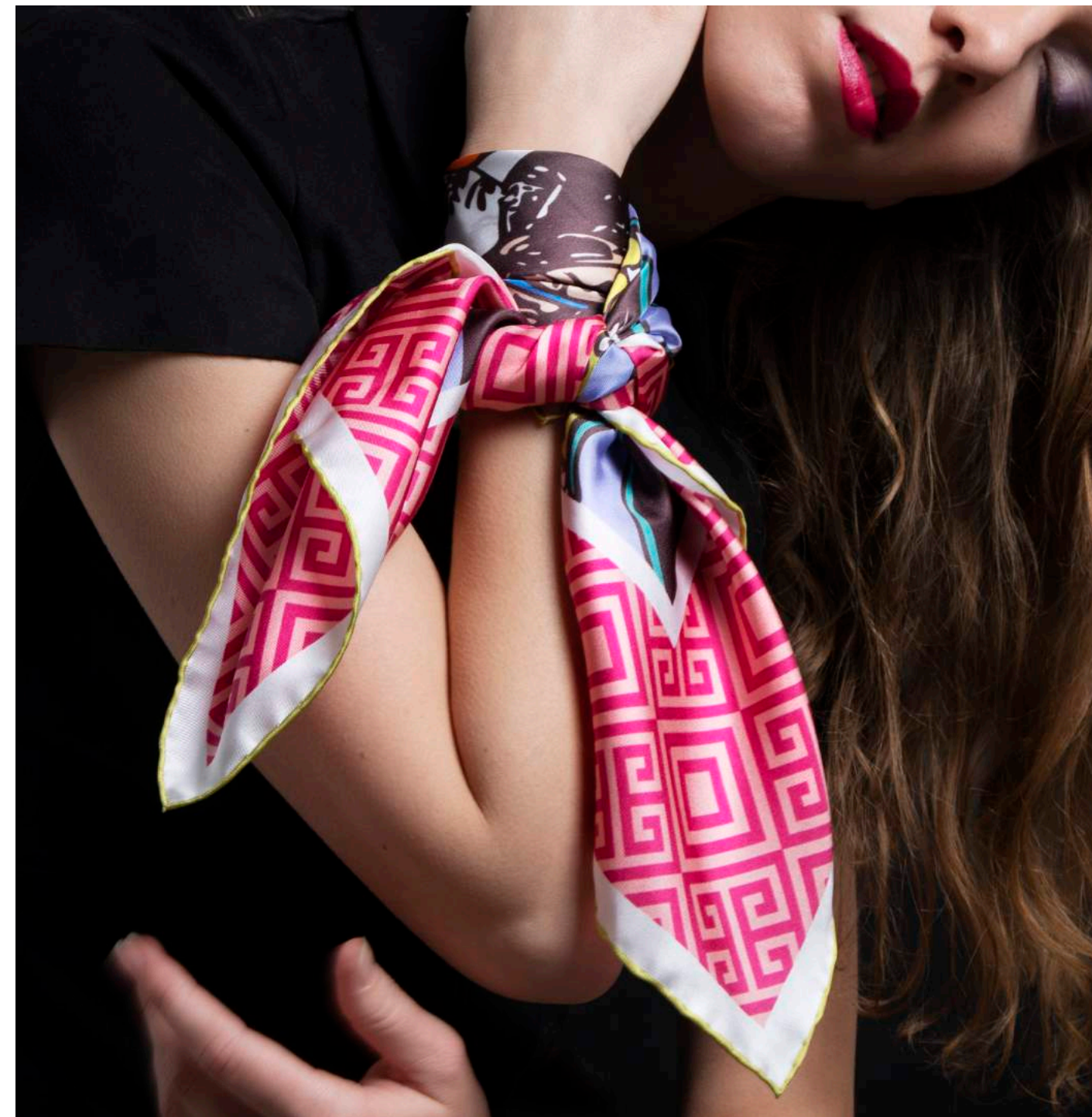




MELPOMENE

CODE #324

Inspired by Melpomene, muse of musical harmony, immersed in polka dots, delicate and lively fantasy.



CALLIOPE

CODE #321

Inspired by Calliope, muse of epic poetry, framed by decorations with Hellenistic shapes.



URBANA Collection

Foulards made of twill silk, with iridescent reflections and bright colors.



Through overlapping games of color and repeating shapes and elements a fascinating and evocative picture of symbols, landscapes, and traditions of four main European cities is originated.



BARCELONA

CODE #312

A picture of Barcelona,
cheerful and folkloric.



LONDON

CODE #313

A picture of London,
between order and elegance.

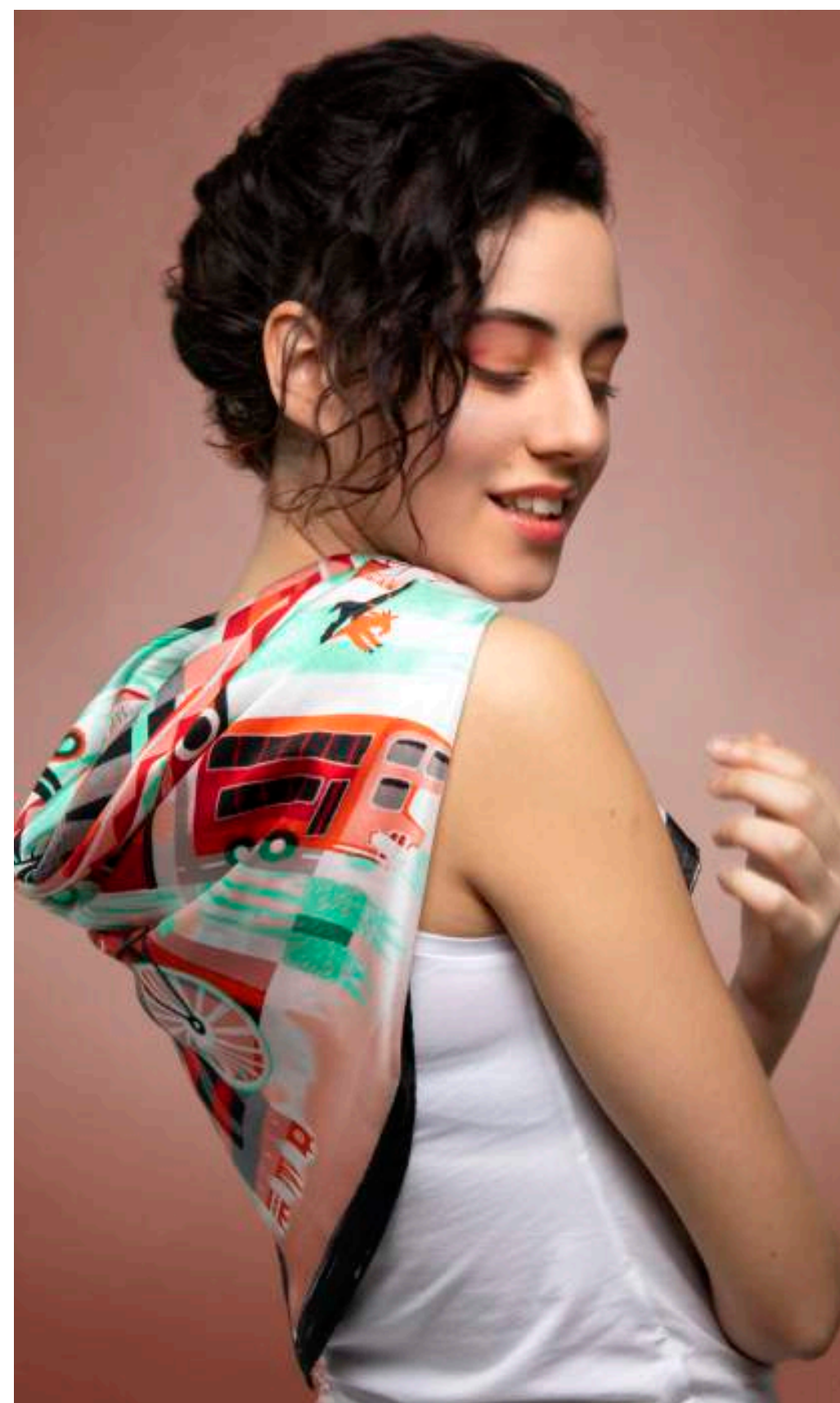


ROMA

CODE #311

A picture of Rome,
between legend and mystery.

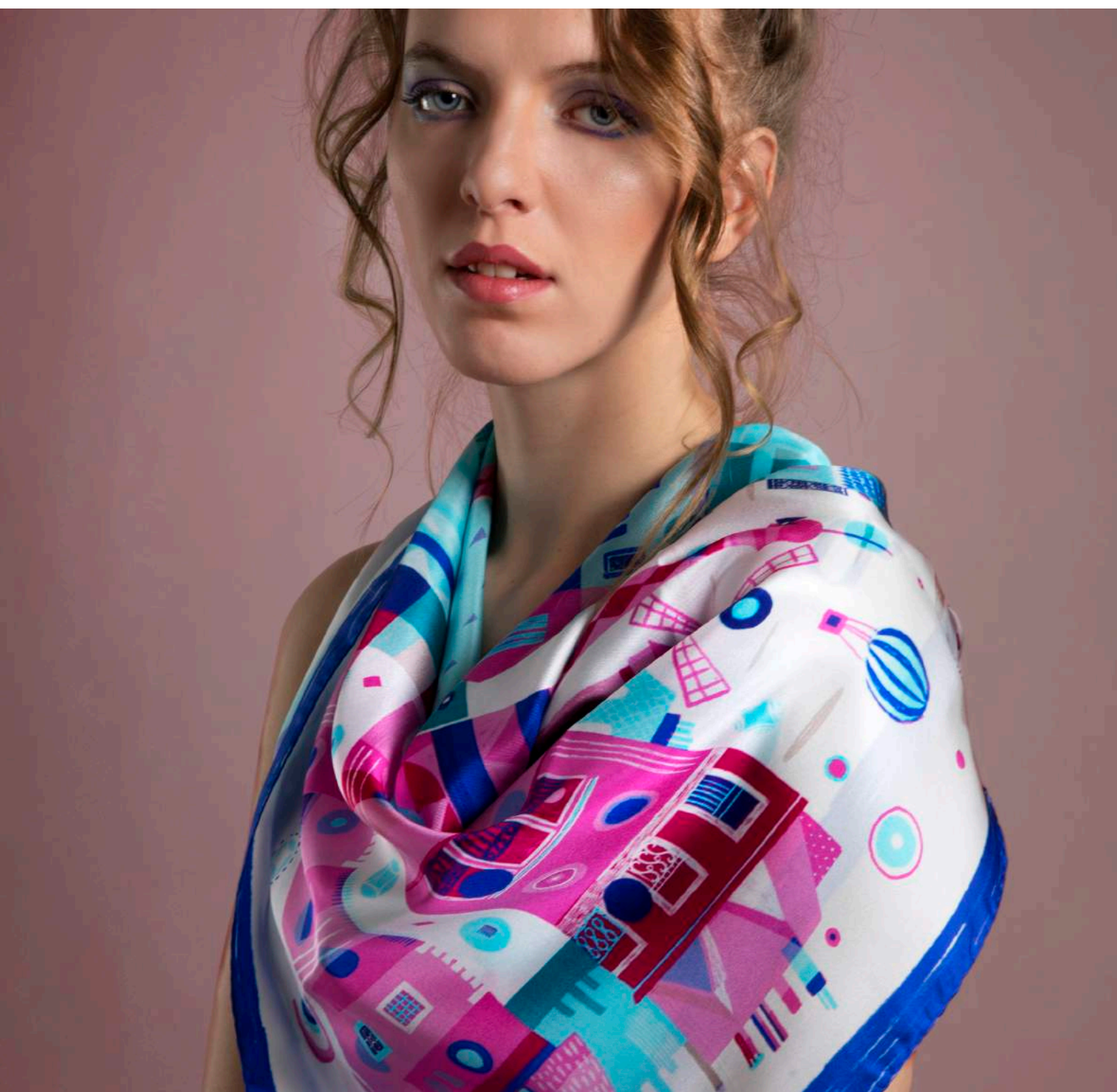




PARIS

CODE #314

A picture of Paris,
with magic and retro charm.





CONTACT

Follow us on [@orequofficial](#)

Visit our website to be always up to date on our products and collections. follow our social accounts to get updates about news and events. Read our stories to learn new trends and advices for your outfit.

OREQUO S.r.l.

Via Vicenza 9, Monte San Pietro
Bologna - Italy
+39 0287189882
info@orequo.com

www.orequo.com



