

I. Wooden Houses



Grosso wooden house gives the feeling of living with the **Nature**

Building a new home is one of the most significant decisions in one's life and the choice of a wooden house, with its durability over time and the atmosphere that it conveys has its roots in a very distant past.

The wood used for the construction of a house helps to make the atmosphere healthy, so much so that its use plays a leading role in the global reduction of CO2 emissions and represents an essential and effective factor for climate protection.

We could say that wood is the raw material on which our oldest idea of home settles. An idea that is more alive than ever today, which we wanted to interpret in an increasingly comfortable and evolved key with the Grosso line of residential, industrial and agricultural buildings.

The relatively low weight of the wooden supporting structure has allowed us to develop the construction of elevations and extensions on existing homes. We create your wooden project by studying the optimal solutions to ensure you a safe, functional home that gives space to your desire to live in the nature.





Imagine the House of your **Dreams**, We are ready to make it happen

Grosso wooden house is designed and tailored to your dreams and guarantees a unique experience for those who live in it.

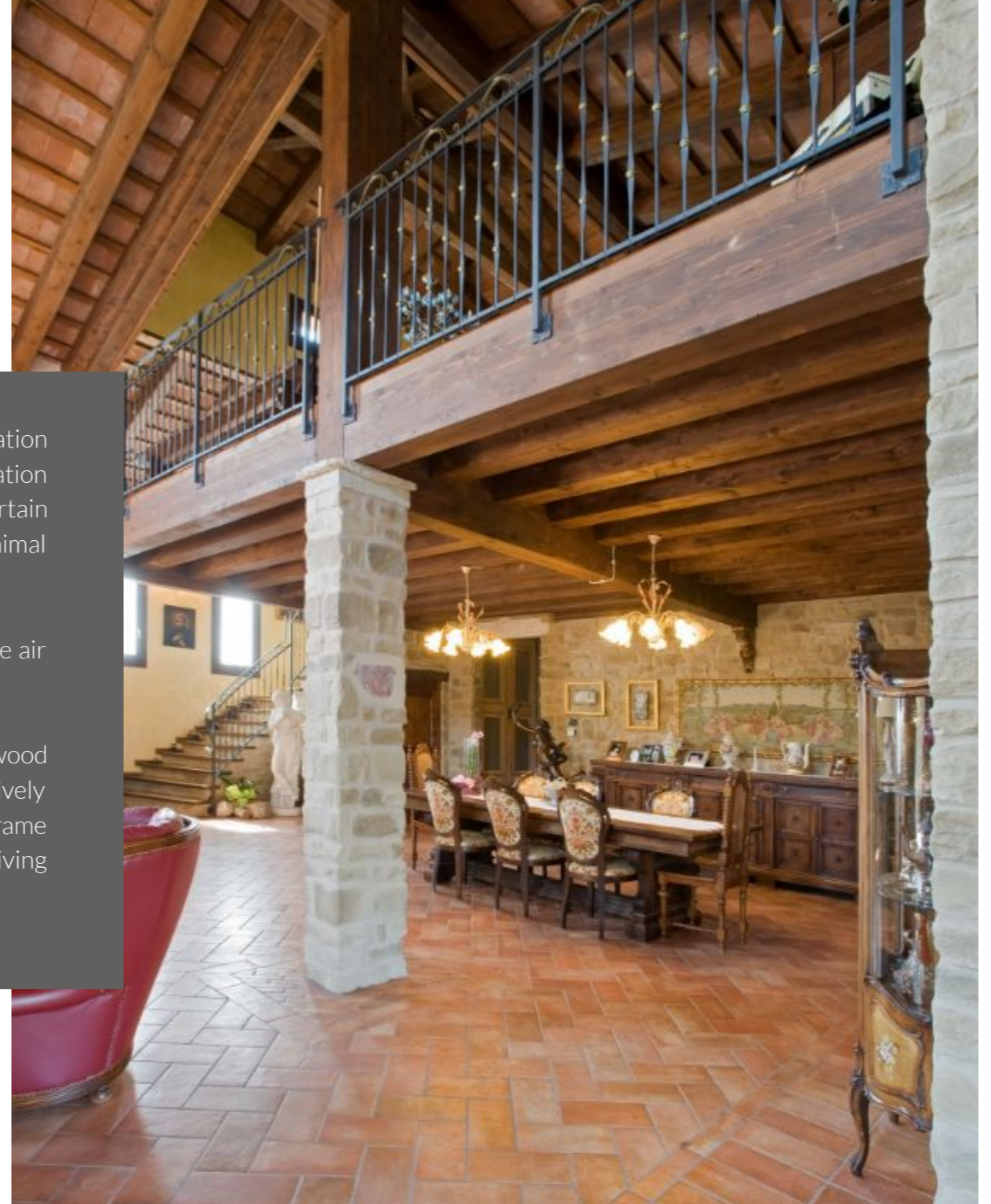
Imagine an ideal place for your family full of charm, coziness, and comfort. The veining of the wood and its colors will infuse your home with warmth, light, energy, and balance.

Your home will be extremely comfortable, thanks to the thermal insulation due to the intrinsic characteristics of wood. Made with thinner thicknesses than the classic masonry house, it will be anti-seismic par excellence and will at the same time guarantee excellent energy performance and high healthy living.

Wood will give you a home where you can rest in total relaxation, thanks to the acoustic insulation typical of these buildings. An efficient acoustic performance is the result of an excellent combination of solutions and materials. Once you reside in a wooden built location, you will feel a certain wholesomeness of the air, always dry environments with no humidity and mold. A house with minimal internal pollution as it has few / close to zero emissions and therefore VOC free.

Wood is a porous material, that's why is also able to stabilize temperature changes and make the air cleaner.

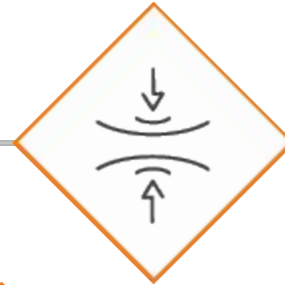
The wooden house against all expectations is certainly also more resistant to fire since the wood burns in a slow, uniform and controlled way. A wooden building, even with many floors, is relatively simple, fast and not very expensive to build and install. The construction systems used, with frame walls or multilayer panel walls, represent an effective response to every need. Enjoy your living experience without any limits, think about your dream, we are here to make it happen!



I vantaggi di una casa in legno Grosso

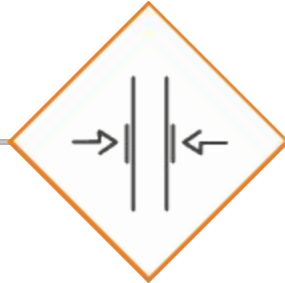
EXTREME PROJECT FLEXIBILITY

with adaptation to the customer's aesthetic and structural needs thanks to a team of dedicated Professionals.



REDUCED THICKNESS

of the masonry and an increase of up to 10% of the internal walkable surface compared to traditional systems.



ADVANCED THERMAL AND ACOUSTIC PERFORMANCE

guarantee lower energy consumption and greater comfort



HIGH ANTI-SEISMIC PERFORMANCE

the extreme elasticity and lightness of timber eliminates the seismic risk



VERY SHORT ASSEMBLY TIMES

thanks to the pre-assembly system, installation becomes extremely fast



FIXED AND PREDEFINED COSTS

thanks to a careful project and pre-assembly system, the costs are fixed and predefined



DURABILITY OVER TIMES

the careful selection and use of all materials guarantees the longevity of Grosso's houses



We Design and build your
home **Safely**

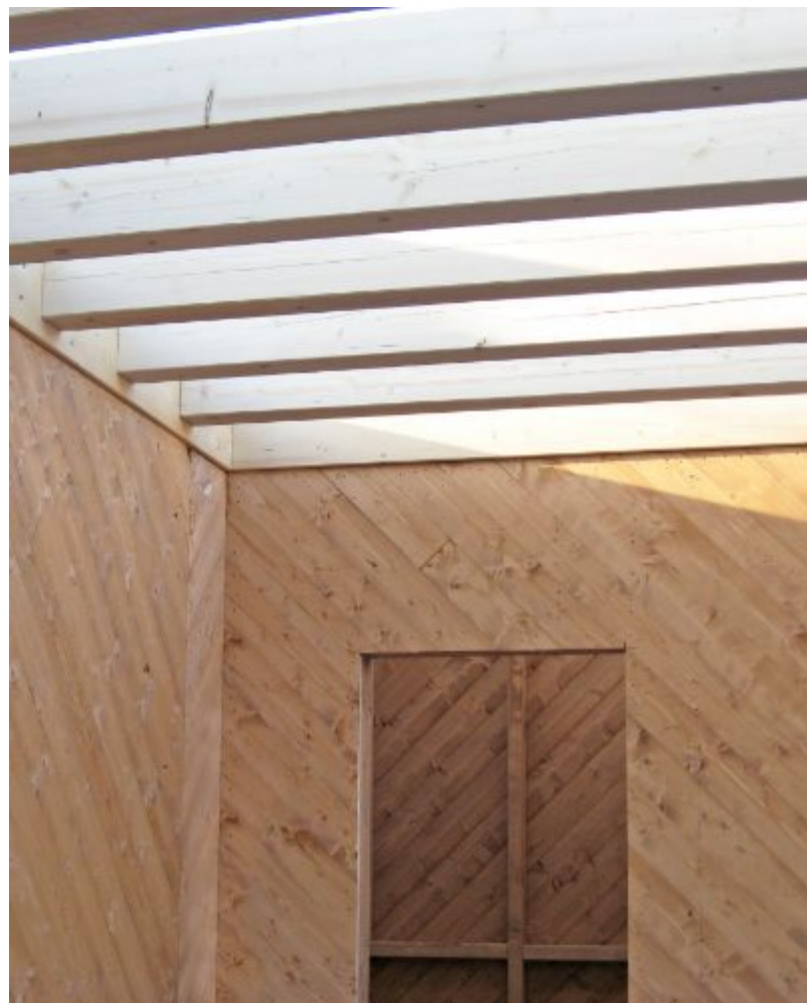
The wooden house is not only a fascinating and comfortable building to live in, but also an extraordinary laboratory of technology and innovation.

The design phase and the resulting structural decisions are of fundamental importance to guarantee you an excellent result. This is why we collaborate with your architects and designers and we are committed to always giving our evaluation on the feasibility of the structure to be built and we will always take care of the executive project.

Thanks to the Grosso construction technology and the natural flexibility of wood, it will be possible to create architectural environments that challenge the forces of nature.

We put at your disposal all the experience and skills of a staff specialized in engineering and implementing effective and innovative construction details and insulation systems. In order for your single-family and multi-family housing solution to be excellent and durable over time, a very precise implementation is required as, in this context, a single forgetfulness could considerably compromise the performance values.

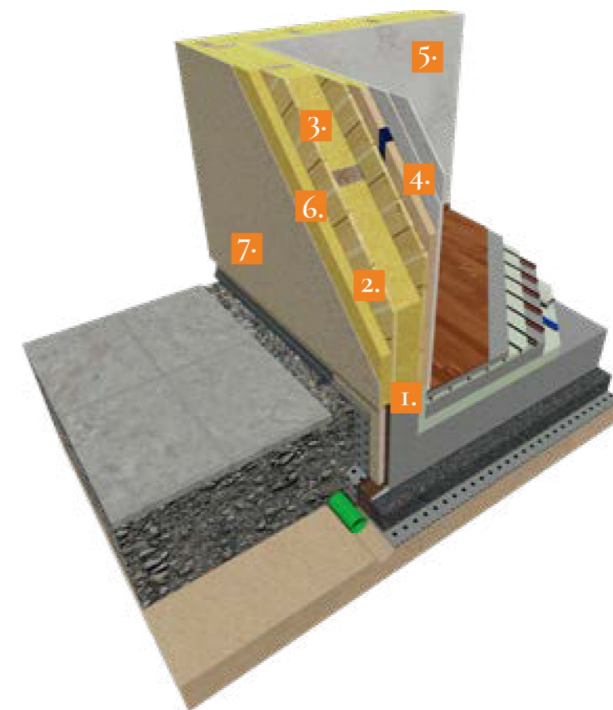
The high level of prefabrication allows us to manage the construction site quickly and effectively. We entrust this delicate construction phase to our teams of specialized technician to ensure safety first of all.



A **healthy** atmosphere starts from the beginning

NO-GLUE HOUSE

Did you know that in a wooden single-family house with commonly used systems are estimated to be employed between 5 and the 6 quintals of glue? To reduce the use of glue and related emissions, Grosso proposes a system of “zero glue” construction. A timber frame with load-bearing beams in solid construction timber includes both the skeleton and slabs and roofs. For wind-bracing, on the other hand, is designed the use of planks placed at a 45 ° angle. With this system, the use of glue is reduced by 98% and at a competitive construction cost on the market.



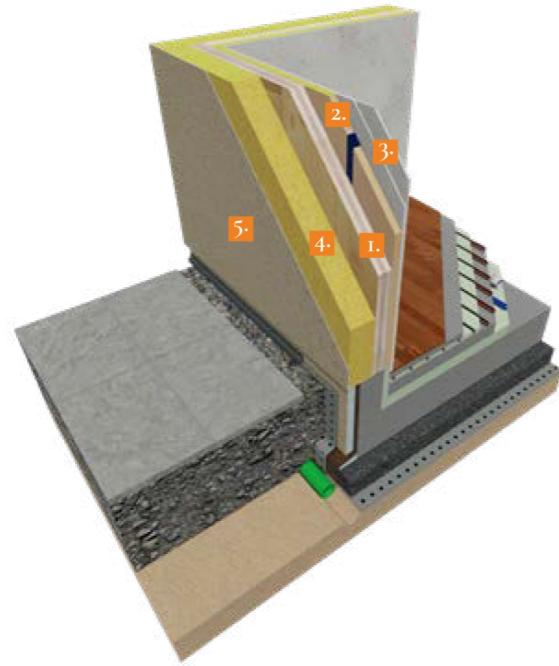
1. Load-bearing frame structure in solid wood
2. 45 ° bracing planks
3. Insulation layer
4. Counterwall for installation
5. Internal cladding panels in plasterboard/plaster fiber
6. Insulating coat
7. External plaster

Two construction system a unique result

SELF-SUPPORTING TIMBER PANEL SYSTEM

It is a massive construction system for wooden houses that involves the construction of the perimeter and internal load-bearing walls completely in solid wood, using glulam timber panels of crossed spruce boards glued together. The maximum size of the panels, already equipped with special holes, can reach up to several meters in width and 14 ml. in length, with variable thicknesses ranging from 50 to 300 mm.

The x-lam panels are also used for the construction of the slabs. This system is suitable for multi-story buildings or where a certain mass in the walls is required.



1. Xlam load-bearing frame structure
2. Counterwall for installation
3. Internal cladding panels in plasterboard/plaster fiber
4. Insulating coat
5. External plaster

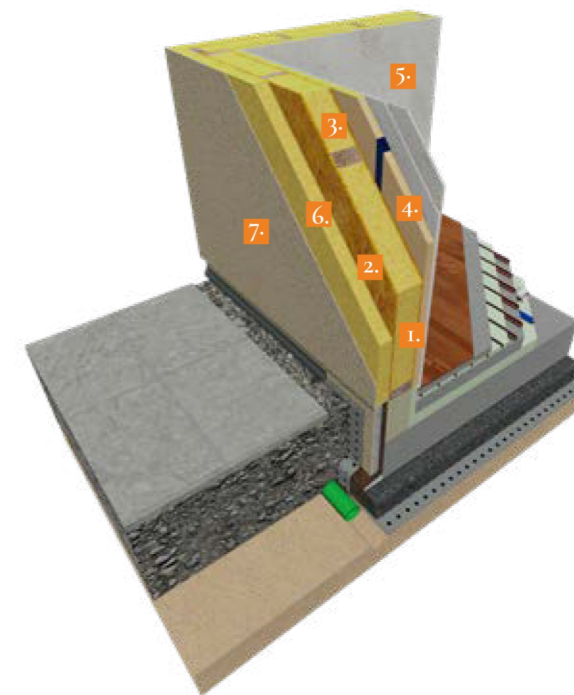




SELF-SUPPORTING TIMBER FRAME SYSTEM

It is a lightweight construction system for wooden houses that involves the construction of the perimeter and internal load-bearing walls thanks to a frame structure consisting of uprights arranged to a constant center distance and lower and upper crosspieces in wood, covered and braced externally by multilayer panels or by a layer of boards arranged at 45 °, while internally by boards or slabs in drywall.

To achieve the desired levels of thermal and acoustic performance, an insulating layer will be inserted inside the space of the frame. This system is widely used for buildings of small/medium size.



1. Load-bearing timber frame structure
2. Timber panels
3. Insulation layer
4. Counterwall for installation
5. Internal cladding panels in plasterboard/plaster fiber
6. Insulating coat
7. External plaster

The **types** of houses available

RAW HOUSE

Your raw house will include the foundations, the load-bearing walls and may also include the internal partitions, the slabs and the roof, therefore the internal stairs.

ADVANCED RAW HOUSE

If the raw house is advanced, windows, sills and thresholds, any tiles, sheet metal work and the coat are added to your wooden house, therefore it is totally closed externally.

FINISHES

The Grosso team remains at your disposal to advise you on how to complete the finishes of your home. Discover the wood finishes of the “Nature” line!

How long does it take to build my wooden house?

The construction of your wooden house is a fairly short process but it will follow some essential steps that will give shape and substance to your housing project.

In all these phases and after the construction of your home, our company is at your side to advise you on the best solutions and answer to all your doubts.

The realization times of the entire project may vary according to the customized architectural design by your architect or designer, surveyor or engineer which is of fundamental importance and will last, in our experience, about 6 months since it will have to combine your requests with other various elements including, for example, only the division of the rooms based on the orientation of the house and sunlight. This phase is followed by the executive design by our team of experts which lasts about 1 month, it will adapt perfectly to the architectural project and will be the basis of the subsequent prefabrication process of the wooden structural elements at our company. Each construction element will have to pass a quality check, at the end of which it will be ready to be sent to the construction site where the construction company will have already built the foundations, a very important element, on which the house will be placed. The installation of the structural elements will be carried out by our technicians and subsequently the construction company will take care of the finishing and connections. This second executive phase will last about 2 months and eventually your home will be delivered and ready to be lived in!

