

APPLICATION ON CONCRETE TILES AND SCREED

Issued on 14/09/2021 - Rev. n. 1 of 14.09.2021

PRIMER BETON KA+KB



Preparation of the Beton KA + KB primer

The package consists of 2 pieces, Beton KA of 12 kg in powder and Beton KB It 5 liquid, pour 3.5/4 liters of Beton KB into a clean bucket, add Beton KA in small doses and mix thoroughly for about five minutes using a mechanical mixer, the primer is now ready to be applied. In the case of colored floors or walls, it is advisable to color the primer as well. The yield of the primer is about 10 square meters a single layer, and has a pot-life of about 3 hours from the mix.

Application on tiles

On a floor or wall with old tiles it is advisable to make sure that they are well anchored and free from oils and greases, proceed with the application of the single-layer primer using a 3mm stainless steel trowel, apply the primer for about 1 square meter and immediately after smooth the treated surface with the smooth side of the trowel in order to level the product and make it uniform, continue with the same procedure for the entire surface.

Application on existing screed

On an existing screed floor or covering that has been cured for at least 28 days, it is advisable to make sure that there are no cracks, proceed with the application of the single-layer primer using a 3mm stainless steel trowel, apply the primer for about 1 square meter and immediately after smoothing the treated surface with the smooth side of the trowel in order to level the product and make it uniform, continue with the same procedure for the entire surface.

Application on tiles with traces and restorations

On a floor or wall with old tiles where there are traces and previously restored grooves for the passage of water pipes, for heating, etc ... proceed with the laying of a 70/80 gr fiberglass mesh over the entire surface treat, pour the primer on the mesh and spread it evenly over the entire surface using a stainless steel trowel, continue with the same procedure for the entire surface. **It is recommended to mix Beton KA with 4 liters of Beton KB only for coverings.**

MARMURA



Preparation of the MarmUra

MarmUra is ready to use, it must be mixed with an electric mixer in both the white and colored versions, it can be diluted with drinking water up to 10% depending on the temperature or texture to be created.

Application method of MamrUra

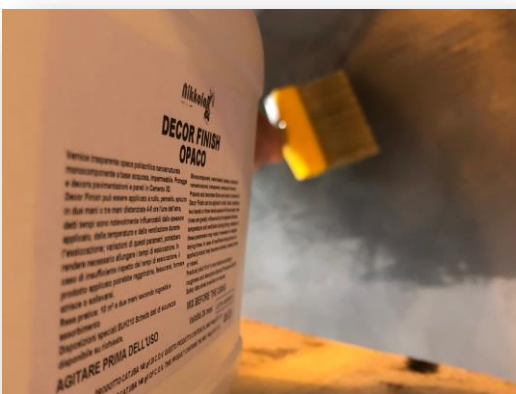
Apply a first layer of MarmUra using a stainless steel trowel and taking care to give the surface the desired texture and let the product dry for 12 hours;

Apply a second layer of MarmUra to perfect leveling and obtain the desired aesthetic effect and leave the product to dry for about 24 hours. It is essential at this stage to use a specific stainless steel trowel that does not cause unpleasant greyish burns;

If you want to obtain a perfectly smooth surface, you can choose to sand the surface with the sander inserted in the vacuum cleaner, using 100/120 grit sandpaper until the desired degree of fineness is obtained;

Perfectly vacuum all traces of dust and clean with a damp cloth in order to perfectly remove dust from the surface.

DECOR FINISH



Preparation of the Decor Finish

Decor Finish is ready to use, do not add water or dyes. After shaking the product well, pour it into a clean bucket, the yield of Decor Finish is about 12 square meters in two layers.

Application method of Decor Finish

For the correct application of the Decor Finish it is essential to use a Mohair roller with short hair;

Proceed with the spreading of the first layer of Decor Finish evenly over the entire surface, taking care to spread the product well and go over it several times until completely absorbed, the application must be done following cross movements and no excess product should be left, in this way we will obtain a compact and uniform surface (the first layer of Decor Finish has a primary role for the perfect result of the work and for the permeability to water), let the product dry for at least 12 hours;

Check that there are no lumps or impurities on the surface, in this case proceed with cleaning using a vacuum cleaner. (it is essential that the surface is perfectly clean before proceeding with the second layer), spread a second layer of Decor Finish evenly over the entire surface, taking care to distribute the product well and go over it several times and not to leave the product in excess;

The drying times for each layer are significantly influenced by the temperature and ventilation during drying and may make it necessary to extend the drying times themselves;

In case of insufficient respect of the drying times, the applied product could wrinkle, crack, form strips or lift from the support.

IMPORTANT NOTE

Drying time to walk on it and use water after applying the last coat of Decor Finish is 7/10 days, the times can be lengthened according to the environmental humidity and the seasonal period of application (seven days at 30 ° C, ten days at 10 ° C, apply at least 4 ° C above the dew point);

Do not cover the surface during the seven days of curing, do not place heavy objects such as furniture, sofas, tables, pots with plants etc on top;

during drying, favor the exchange of air. In the case of outdoor application on MarmUra floors, the optimal slope of the treated surface must be taken into account so as to allow the water to flow out so as not to create long-term stagnation;

Decor Finish decorates and protects continuous surfaces but does not make them indestructible and eternal. Do not apply the product in case of counterthrust humidity;

The duration over time depends mainly on the thickness applied and on the type and intensity of wear to which the substrate is subjected. To maintain the pleasant appearance, we recommend regular cleaning and care of the surface.

KNOWLEDGE OF PRODUCTS

Even if our application cycle includes only one anchoring primer, it is also true that in front of some types of substrates such as screeds, parquet, wood, etc., ground-floor dwellings, substrates subject to rising damp, etc. have the optimal knowledge to be able to create a solid and effective structure that lasts over time. The Primer is the fundamental basis of the entire application process.

MIXTURE, COLORS AND PERFECT LAYOUT

It is always assumed that the pigments, coloring pastes or toners used to color the products are the same. Behind each color proposed by the manufacturer there are various studies and very strict laboratory tests and it is precisely for this reason that it is necessary to know first of all the mixing of the dyes and that of the product itself.

PERFECT SUCCESS OF WORK

One of the main factors for the success of a floor is NOT to be superficial in the evaluation of the laying surfaces that jeopardize the success of a continuous surface, the drafting, application times and cleaning of the environments is essential for the perfect success of a floor or wall covering in MarmUra.

MAINTENANCE

Let's start by saying that any type of surface is not eternal!

There are some initial precautions that can be very useful in keeping a continuous surface in MarmUra in good condition:

- Provide a doormat at the entrance to the house that can retain dust, sands and abrasive particles.
- Use the broom or vacuum cleaner regularly.
- Use felt pads under furniture, especially under furniture that moves frequently such as chairs.
- If it is necessary to move heavy furniture, it is advisable to place woolen cloths under the feet or the base of the furniture to avoid unsightly scratches.
- The cleaning of the continuous surfaces in MarmUra is very simple; it is sufficient to wipe a cloth moistened with water and alcohol on the surface to be cleaned.
- Even if the transparent or colored finishing treatment protects the floor from the rapid penetration of accidentally fallen liquids, it is good to remember that all liquid substances, especially those most used in the home, must be removed quickly before they can create unsightly halos. .
- For extraordinary maintenance and repairs, the intervention of specialized personnel is essential.

What is Beton?

It is a two-component powder primer for interiors and exteriors, with high adhesion, fiber-reinforced, transpiring, white in color. Beton KA + KB is a mortar based on carbonate aggregates and quartz sands with controlled grain size, powdered polymeric binders, specific additives and short synthetic fibers. The simultaneous presence of mineral and polymeric binders, inorganic fillers and reinforcing fibers develops a positive synergy that increases the mechanical properties of the product.

What is MarmUra?

is an innovative paste composed of micro-resins, ceramic microspheres, special additives, single-component and ready to use, created for the decoration of interior and exterior floors and walls, thanks to its very low thickness it can be used for the coating of stairs, swimming pools, bathrooms, shower cubicles, walkways, terraces, balconies, heated floors, etc., extraordinary yield, compressive and tensile strength, remarkable flexibility and workability. MarmUra is a product for highly professional use, it must only be colored, mixed and applied. Thanks to the absence of epoxy resins, MarmUra is in the total absence of yellowing, furthermore the problem of pot-life that we find in bi-component products such as epoxy resins and microcements is eliminated, once the container is opened, the remainders, if properly closed, undiluted and well preserved, they remain usable for about twenty-four months. MarmUra is an authentic ceramic marble effect, it does not contain cements or other hygroscopic components which, upon direct and prolonged contact with water, can preclude performance.

What is the Decor Finish?

is a water-based nanostructured transparent polyacrylic paint, one-component of the latest generation, in three finishing versions, semi-gloss, opaque and non-slip, Decor Finish is waterproof and drive-over, anti-dust, easily washable, resists abrasion, resistant to pedestrian traffic, consolidating, free from organic solvents, applicable in closed environments, odorless, resists thermal changes, requires minimal maintenance even after years, formulated with low environmental impact.

TECHNICAL SHEET BETON KA + KB

TECHNICAL DATA:

Appearance: Powder;

White color;

Solid residue: 100%;

Grain size G.F.: Max 0.5 mm;

Mineralogical nature of the aggregate: Silicon/carbonate;

Consistency: Thixotropic;

Density of the mix: 1500 Kg / m³;

Duration of the mix: About 3 hours depending on the period and relative humidity;

Waiting time before finishing MarmUra: Min. 24 hours;

Coverage: ~ 10 m² with a thickness of about 3 mm a single coat, using the glass fiber mesh greater than 70/80 gr/m² the yield can be reduced by up to 30%;

Packaging: Comp. KA of Kg. 12 + Comp. KB of It 5

Storage in well-closed original packaging and a dry place between +5°C and +30°C.

CARATTERISTICHE DI MESSA IN OPERA:

Temperatura d'utilizzo: +5 +35 °C;

Applicazione consigliata per interni ed esterni;

Applicare su supporti ben asciutti e puliti; Coprire bene infissi, porte, etc.;

Non applicare su supporti bagnati, gelati o su ripristini ancora umidi;

Conservare in luogo fresco, asciutto ed al riparo dal sole;

Non applicare in presenza di sole battente, forte vento o pioggia;

Nel caso di superfici troppo calde per l'effetto dei raggi solari è opportuno inumidirle con acqua;

Attendere la stagionatura della rasatura cementizia prima della decorazione;

È importante che durante l'applicazione e nelle 24 ore successive la temperatura non scenda sotto +5°C e l'umidità relativa non sia superiore all'80%;

TECHNICAL SHEET MARMURA

OTHER RECOMMENDATIONS:

- Avoid applying the product with relative air humidity over 80%;
- Do not apply on damp substrates or where it has been ascertained the presence of rising damp or infiltration;
- Measure with a carbide hygrometer at a depth of 4 cm that the humidity level is less than 3%.
- Cover windows, doors, etc.;
- The floor will be suitable for pedestrian traffic only after two days from the last layer of protective finish applied, for frequent washing and the installation of furniture it will be necessary to wait at least five days from the last layer of protective finish applied.

CHARACTERISTICS OF INSTALLATION:

- Paste product and ready to use, max 10% of water in the final layer to improve leveling
- Mix the product well before use;

- Temperature of use: + 5 ° C and + 35 ° C;
- Drying time: About 8 hours;
- Total hardening: ~ 24 hours;
- Resistance to water and UV rays: ~ 5 days;
- Store a cool, dry place away from the sun, + 5 ° C and + 30 ° C.;
- Do not apply in the presence of beating sun, strong wind or rain;

PERFORMANCE FEATURES:

- Tensile strength (EN 13892-2): 38 N / mm² after 28 days
- Compressive strength (EN 13892-2): 38 N / mm² after 28 days
- Flexural strength (EN 13892-2): 36 Nm after 28 days
- Impact resistance (UNI EN ISO 6272-1): 0.500 / m Nm / 501
- Resistance to permeability (UNI EN 1062-3): 0.0001 kg / m² * h0.5 after 5 days
- Reaction to fire (EN 13501-1) CLASS 1 after 28 days
- Resistance to adhesion on concrete (EN 13892-8): 6 N / mm² after 28 days
- Determination of the chair with wheels (EN 425): absolute absence of defects

Minimum / maximum thickness recommended for the application cycle is 3 mm. Consumption may vary according to the consistency, porosity and condition of the surface, as well as the method of application. The performance tests were carried out in our laboratories (laboratory temperature 21 ° C - humidity 65%).

TECHNICAL DATA:

- Viscosity (UNI EN ISO 3219): ~ 130000 mPa * s;
- Specific Weight (UNI EN ISO 2811-1): ~ 1.8 Kg \ Lt ± 3%;
- Coverage: ~ 1 m² / kg in two layers;
- PH:> 9.00;
- Appearance: White paste;
- Dilution: ready to use, max 10% drinking water;
- Touch dry: 3h at 20 ° C.;
- Walkable drying: 24h at 20 ° C.;
- Seasoning: 28 days at 20 ° C.;
- Packaging: 7 Lt (12.5 kg) and 2.5 Lt (4.5 kg) buckets;
- Storage: 24 months in unopened packaging and protected from UV rays and humidity;
- Tints: 40 Toner T colors and over 800 colors through our Color tinting system 3.0;
- Classification for final use (UNI EN 1062.1 - 4.1): Decoration and Protection;
- Classification by type of binder (UNI EN 1062.1-4.2): Acrylic Micro-resin;
- Classification by state (UNI EN 1062.1-4.3): Aqueous dispersion;
- VOC classification: In compliance with D.L. No. 161 of 03/27/2006 (Implementation of Directive 2004/42/EC);

PRODUCT RETURNS PER CYCLE:

- PRIMER BETON KA KG 12 + KB LT 5: 10 m² single layer
- 7 LT MARBLE: 12 m² in two layers
- DECOR FINISH LT 2.5: 10/12 m² in two layers

The kit is designed to cover a finished surface of 10 m²

TECHNICAL SHEET DECOR FINISH

Technical data:

Practical coverage: 10/12 m² per Lt 2.5 with two coats, variable according to the roughness and absorption of the substrate.

Specific gravity 1.0 ± 0.05 at 20 ° C.

Color: Transparent whitish for the semi-gloss version, transparent straw-yellow for the opaque version.

Temperature resistance: Operating temperature up to 70 ° C

Storage in well-closed original packaging and a dry place between + 5 ° C and + 30 ° C.

Slip: Method DIN 51097 Class A 12 ° ≤ α < 18 ° - Non-slip (DIN 51130): R11 (Decor Finish AS)

Packaging: Lt 2,5 and Lt 0,750

Safety (for EEC regulations) and symbols:

The product is not flammable or dangerous, the product does not require labeling pursuant to Legislative Decree N ° 65 of 14/03/2003 and subsequent amendments and updates.

VOC classification: (D.L. 27 March 2006 n ° 161):

High performance one-component paints. EU VOC limit value for DECOR FINISH AS (cat.i / BA): 140 g / L. DECOR FINISH AS contains max 140 g / L of VOC.

Storage and Transport:

In original well-closed packaging and a dry place between + 5 ° C and + 30 ° C., Land transport ADR / RID not subject.

Safety (EC Regulation criteria 1272/2008 (CLP)):

The product is not considered dangerous. Precautionary statements: Not subject

Risk phrases: not subject

Symbols: Not subject

The product is not considered dangerous according to EC Regulation 1272/2008 (CLP). Special Provisions: EUH 210 Safety data sheet available on request. Clean packaging is 100% recyclable. For information on the correct disposal, storage and handling of the product, please consult the relevant Safety Data Sheet.

OTHER NOTES:

- *The data contained may vary at any time without prior notice by Nikkolor Italia.*
- *The use of coloring pastes not supplied by Nikkolor Italia can compromise not only the aesthetic appearance but above all can significantly alter the performance of the product itself.*
- *The information contained in these technical data sheets are the result of our best knowledge and, as such, are disclosed for information purposes; therefore, it does not engage the responsibility of our company in respect of any complaints arising from conditions of use that are beyond our control, whoever intends to use it is required to establish whether the product is suitable for use or not.*
- *Our The guarantee obligation is therefore limited to the quality and constancy of the same in relation to the finished product, and exclusively for the above data.*
- **For more detailed information please contact our TECHNICAL ASSISTANCE service.**

*Dal 1° gennaio 2016 in Italia la formaldeide è stata catalogata come cancerogena. Lo IARC (International Agency for Research on Cancer) classifica queste sostanze in base a quanto siano dannose per l'essere umano.

*APEO-free indica la caratteristica di un prodotto esente da APEO (alchilfenolo etossilato), sostanza pericolosa per l'ambiente e gli organismi acquatici. Il regolamento REACH (Regolamenti EC 552/2009 EC 1907/2006 REACH), proibisce in Europa l'uso di APEO in concentrazioni uguali o maggiori di 1.000 ppm (parti per milione).

Compressive strength



Flexural strength



Resistance to drive-over



UV resistance



Resistance to thermal shocks



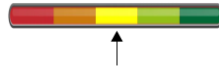
Abrasion resistance



Resistance to frequent traffic



Chemical resistance



Resistance to liquids



Vibration resistance



High temperature resistance



Low temperature resistance



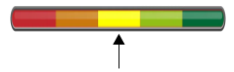
Resistance to atmospheric agents



Scratch resistance



Impact resistance



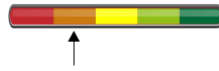
Elasticity of the product



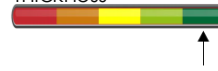
Suitable for heated floors



Applicable at high thickness



Applicable at low thickness



Breathable product



Suitable cycle for rising damp



Cycle Suitable for swimming pools with VL3D



Permeability to water



Adhesion power on various substrates



Easy to clean



Non-slip



Antistatic support



Quick to apply



Respect the environment



Light product after drying



Magnetic effect



Usage time after opening



Hygienic and antibacterial



Two-component



Single component



VOC free



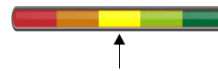
Formaldehyde free



Colorable product



Can be diluted with water



Product applicable by brush



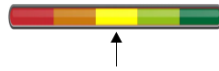
Product applicable by spray



Product applicable to trowel



Roller applicable product



Applicable product



Product applicable indoors



Product for professional use



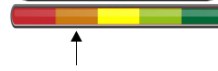
COMMERCIAL PROFESSIONAL



RESIDENTIAL HOUSE



PROFESSIONAL INDUSTRY



very low low medium high very high

