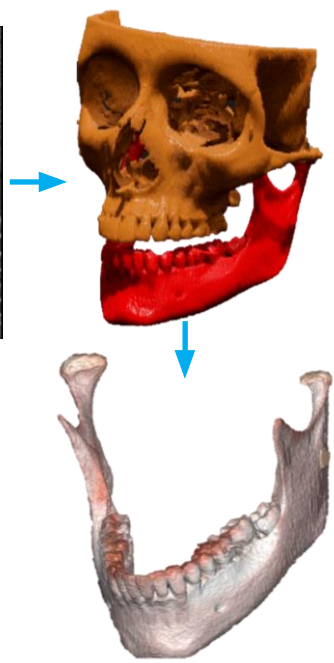
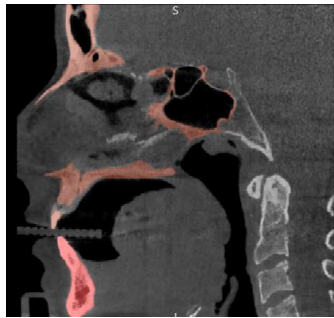


Bones

Custom Made Surgical Planning



Bones

We deliver solutions without compromise

MISTRAL ORTHO (BIORL) is an innovative orthopedic company whose mission is to support surgeons and patients. Where two-dimensional images or with few 3D tools are insufficient and ineffective, **MISTRAL ORTHO** provides an uncompromising solution.

In fact, **2D planning or with inaccurate 3D** tools in the industry, may treat some **anatomical defects** and surgical requirements, but surgeons face significant challenges in the face of **complex** degenerative defects or bone tumors. Surgeons sometimes find themselves trying to provide a long-lasting and effective surgical and implant solution with inadequate instruments or that do not allow to better prepare for the operation.



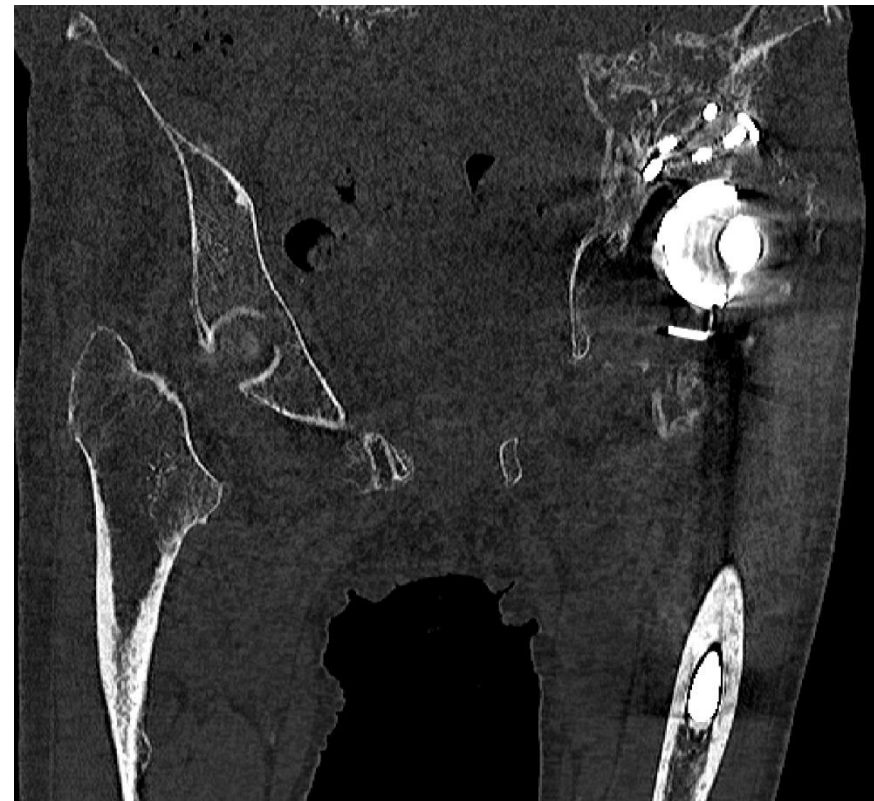
Bones

We work with you to find the best solutions for your challenges!

Plans with standard tools are often found to be ineffective and this leads to interventions that can become complicated, which in turn, cause several problems (both for the surgeon and for the patient):

- Poor stability
- Deterioration of bones
- Additional costs
- Lower quality of life.

Do not provide the best solution at first surgery may also result in additional complications for patients.

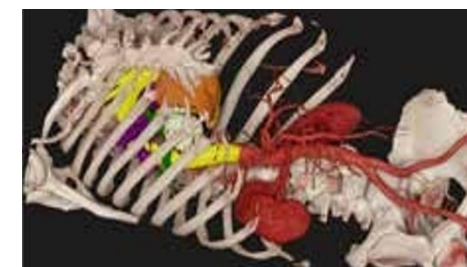
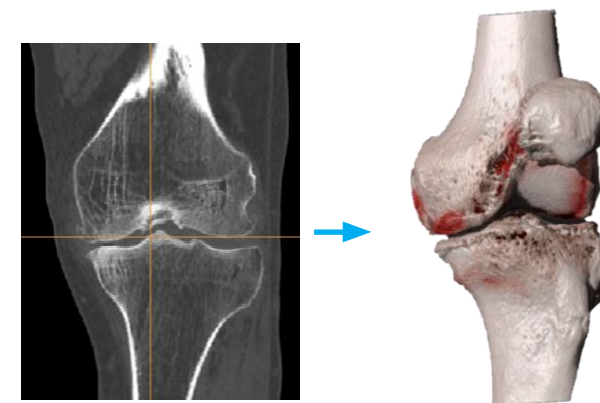
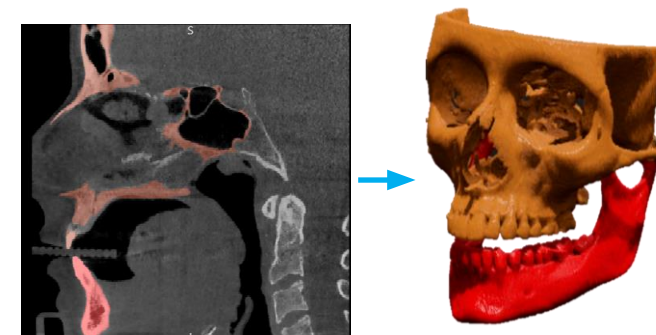


Bones

B1S

The **MISTRAL ORTHO B1S** Reconstruction Service **helps surgeons, and their patients**, for whom traditional **standard** solutions have proven **ineffective, expensive**, and **insufficient** due to complex degenerative and anatomical defects.

Using the **MISTRAL ORTHO** portal to visualize the **CUSTOM-MADE** reconstruction of the patient's bone, means that the surgeon has the most extensive visibility of the difficulties that may exist during surgery, determining a priori the safest and most effective surgical approach.



Bones

MISTRAL ORTHO has developed an **advanced visualization** solution for creating patient-specific anatomical models from DICOM data. Combining **ease of use** with a **unique** and intelligent set of tools.



MISTRAL ORTHO uses **FDA and EC-approved** end-to-end image processing software for **pre-operative surgical planning** and the creation of specific anatomical models for patients of diagnostic quality. The solution **B1S** proposed by **MISTRAL ORTHO** minimizes the need for technical skills and can be used on all devices

Bones

Advantages

PATIENT

- ✓ Less invasive and safer surgery
- ✓ Better understanding of your clinical situation
- ✓ Custom-made surgical treatment
- ✓ Reduced room times and anesthesia

CLINIC

- ✓ Reduction of operating costs
- ✓ Reduction of the risk of complication
- ✓ Reduction of medical-legal risk
- ✓ Best organization of the surgical field
- ✓ Reduction of implant failure



SURGEON

- ✓ Better perception of bone defect
- ✓ Possibility to simulate surgery
- ✓ Better awareness of surgical gestures

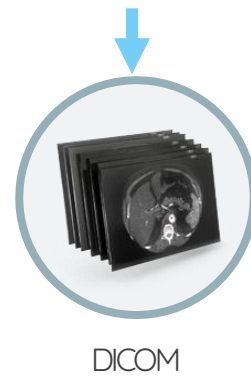


Bones



ACQUISITION

Acquisition of tomographic images

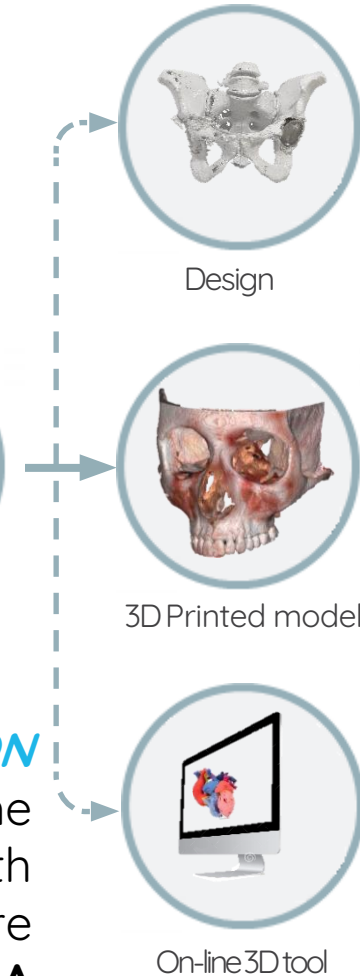


SEGMENTATION

Tomographic data processing, selection of the anatomy concerned and segmentation with certified software

CE e FDA

Bones



components printed directly at the facility, no waiting for shipments

