



# OCS di Alberici

The O.C.S. stamping department is the core of a specialized and highly efficient production process, developed through the company's continuous evolution since 1966.

Thanks to a skilled and flexible team, we manufacture anchor plates with high standards of precision, quality, and repeatability, meeting the needs of various industrial sectors.

The department is equipped with presses that ensure:

- High production volumes with reduced cycle times;
- Integrated quality control throughout the process;
- Maximum dimensional reliability and consistent surface finishes.
- 

We invest continuously in:

- Technology and automation to remain competitive;
- Staff training to ensure competence and responsiveness;
- Sustainability, through the use of renewable energy (photovoltaic panels) and waste reduction practices.

Each stamping is a tailored solution, where technology, expertise, and attention to detail come together to deliver outstanding results.



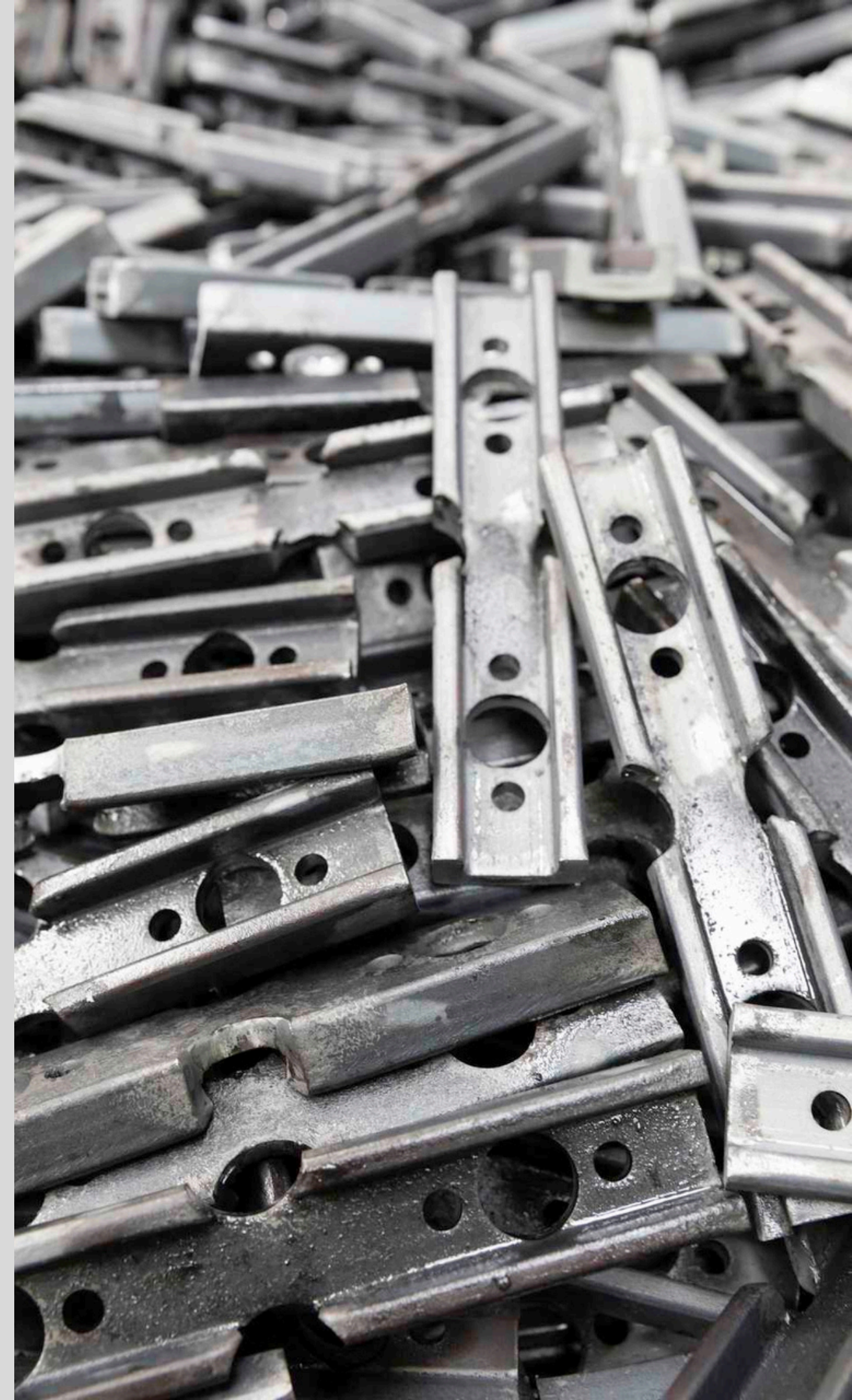
# Technology and precision for the railway sector

O.C.S. di Alberici has developed specialized expertise in this field, producing **essential components** for railway infrastructure.

Our stamping process relies on advanced techniques such as **cold stamping** and **progressive die technology**, ensuring fast, repeatable production with steady characteristics.

The use of progressive dies allows multiple operations to be carried out in a fully automated sequence, optimizing production efficiency and delivering high dimensional accuracy- crucially important for railway applications.

Thanks to our specialized presses and the experience of our skilled personnel, we are able to deliver **high-quality** products that strictly comply with the technical specifications required by the railway sector.





## Our expertise in stamping anchor plates is based on **advanced production techniques**

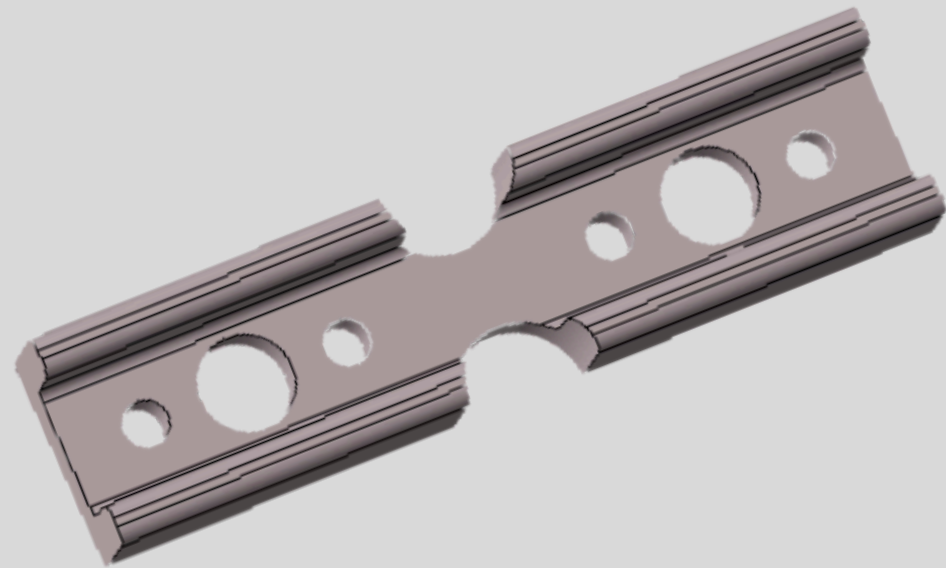
- **Cold stamping:** We produce anchor plates quickly and with repeatable precision, ensuring consistent characteristics across each batch.
- **Progressive die stamping:** Each stage of the process creates a specific feature of the anchor plate, optimizing production efficiency.
- **Coining:** We apply this compression process to precisely imprint the identification name on each tag.
- **Quality control:** Every anchor plate undergoes dimensional checks to ensure full compliance with required standards.



# Anchor plate models

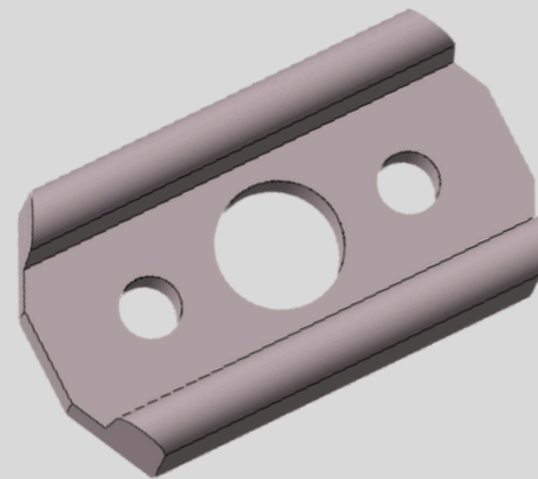
## Anchor plate 1

Standard component used in railway track systems to fasten rails to concrete sleepers. Designed to accommodate elastic fastening systems and ensure correct track alignment in high-traffic configurations.



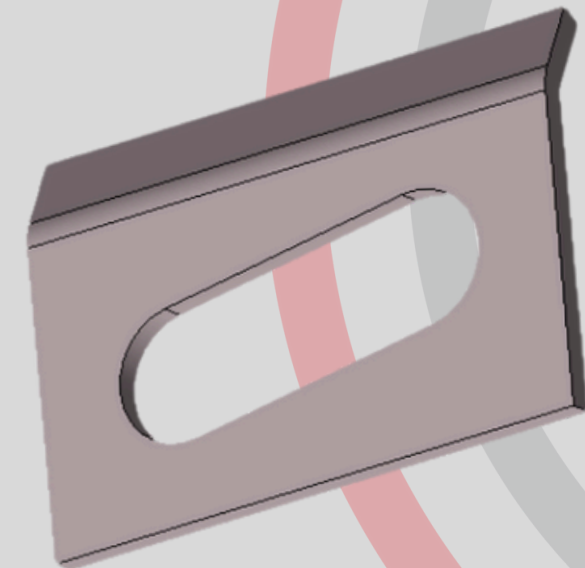
## Anchor plate 2

Compact component used to fasten rails to concrete or steel sleepers, ideal where simplified one-sided installation is required.



## Sleeper

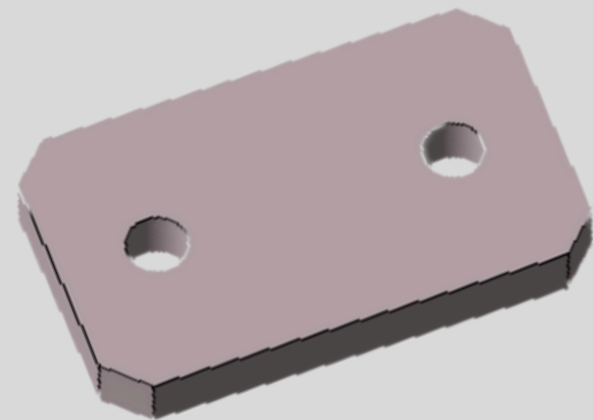
Used to allow linear adjustment during tightening of the anchoring system.



# Modelli piastrine

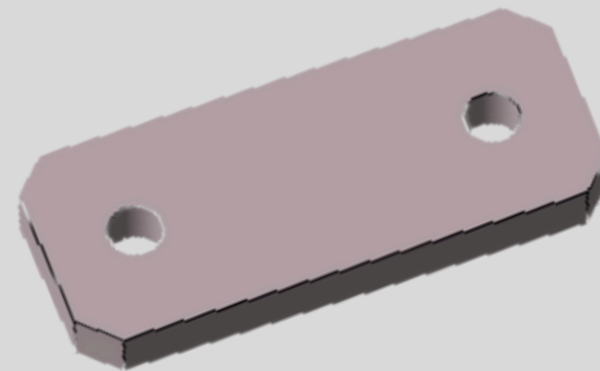
## Anchor plate 3

Small-size plate used for quick and stable fastening in light or auxiliary railway applications, such as line accessories, subsystems, or secondary installations.



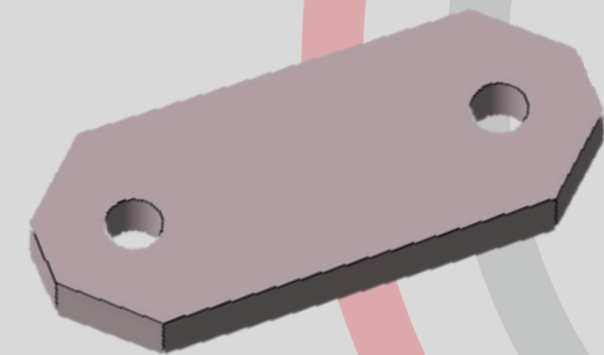
## Anchor plate 4

Compact and symmetrical component, used as a secondary fastening element or contact support on reinforced concrete sleepers or blocks.



## Anchor plate 5

Designed for applications requiring greater geometric adaptability and minimal lateral interference during installation.





# Identification tags

We internally produce steel identification tags for the railway sector. Each tag is manufactured through a **coining process**, which permanently imprints codes or letters directly onto the metal surface.

Cold deformation ensures a **precise** and **long-lasting** result, with excellent resistance over time. The entire production cycle is managed in-house, from acquisition of raw material to stamping and final coining.

Tags are supplied loose, ready to be integrated into the customer's systems or applied to components as required.

A reliable solution to ensure **identification**, **traceability**, and **safety** in railway applications.





# From Mass Production to Small-Scale Stamping

In addition to mass production, O.C.S. is fully equipped to efficiently perform **small-scale** stamping operations.

Thanks to a versatile department and a modular press fleet, we can quickly respond to requests for **small batches**, **prototypes**, **pre-series**, or **low-volume** but high-precision items. This operational flexibility allows us to support our clients both during the initial product development phases and in managing custom or low-frequency parts, while ensuring the same high standards of quality and reliability that define our production process.

We offer a complete service, including:

- In-house die construction
- Dedicated tooling
- High quality and reliability





# Why choose our stamping solutions

Choosing O.C.S. Alberici means investing in high-quality components that contribute to the reliability and safety of railway infrastructure.

Our key advantages for customers include:



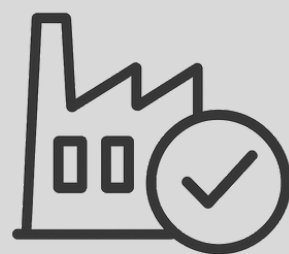
**Industry expertise**

Proven experience in manufacturing components for railway infrastructure



**Certified quality**

Anchor plates produced to strict quality standards and compliant with industry regulations



**Production Reliability**

Stable and controlled processes ensuring consistent quality even in high-volume production



**Flexibility**

Ability to adapt production to customer requirements, for both small and large batch sizes



**Technical Consultancy**

Support in defining technical specifications and selecting the most suitable materials

# Our certifications

O.C.S. operates under a quality management system certified according to the **UNI EN ISO 9001** standard, issued by DNV.

This framework enables us to ensure **control**, **traceability**, and **consistency** across every stage of the production process, from design to delivery, while promoting continuous improvement in all departments.

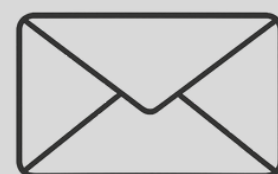
For us, however, quality also means responsibility toward **people** and the **environment**: we work daily to make our production cycle more efficient and sustainable, reducing waste and energy consumption.

At the same time, we invest in the well-being, training, and development of our human resources, firmly believing that a company's true value comes above all from the skills and motivation of the people who work within it.





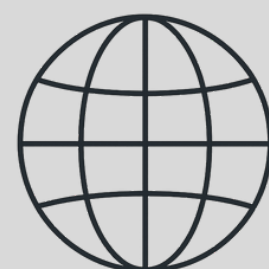
# Our contacts



[amministrazione@ocs-alberici.it](mailto:amministrazione@ocs-alberici.it)



+39 030 69 190 46



[ocs-alberici.it](http://ocs-alberici.it)