

ETERIA



PAJUSCO
DESIGN



ETERIA

THE ART OF EMOTIONAL WARMTH

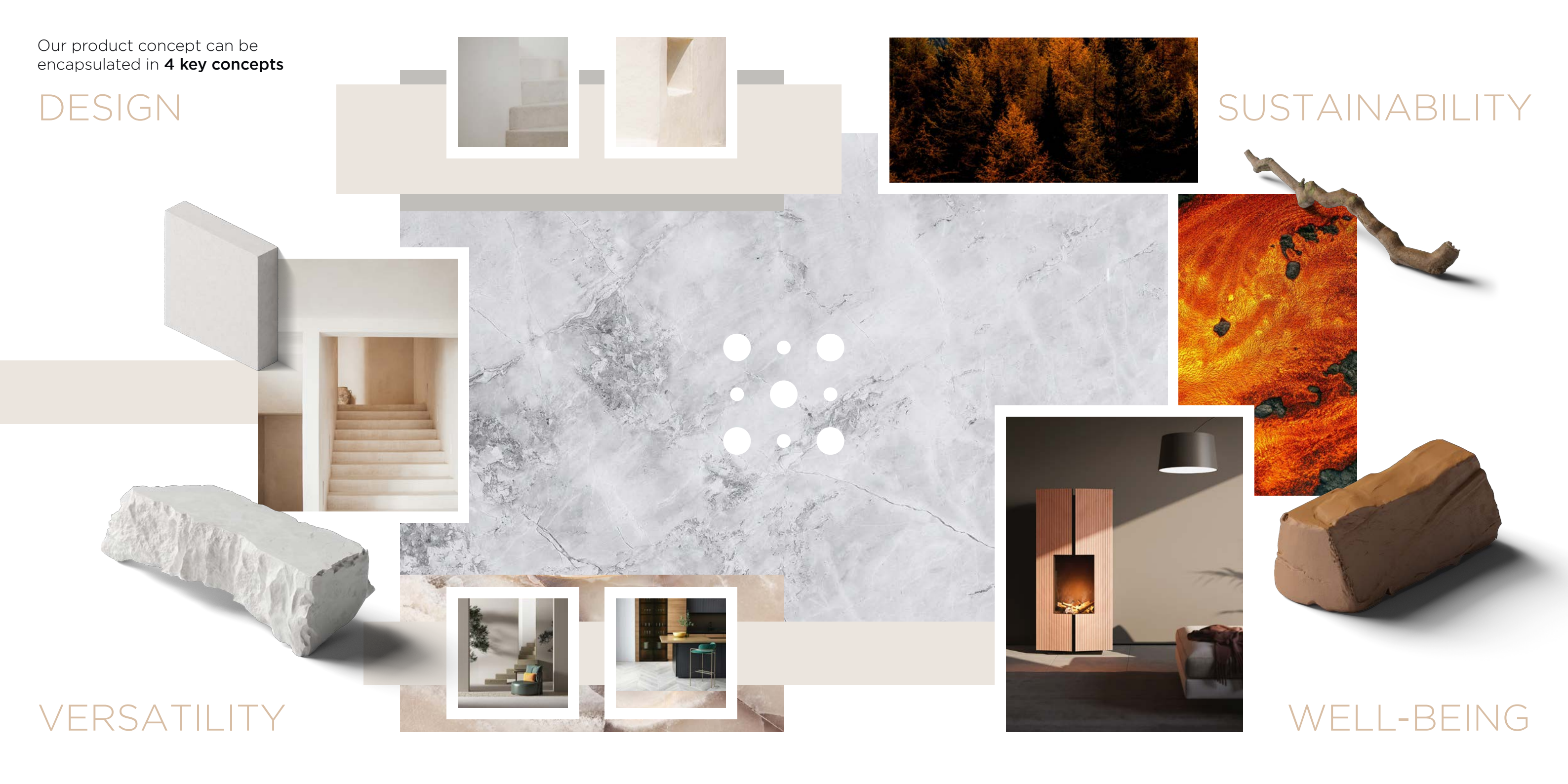
Our product concept can be encapsulated in **4 key concepts**

DESIGN

SUSTAINABILITY

VERSATILITY

WELL-BEING





DESIGN

Eteria is a blank canvas ready to accommodate your creativity.

The outer cladding is **fully customisable**, allowing you to choose from a wide range of colours, textures, and materials of the highest quality.

Every aspect of Eteria has been taken care of to satisfy the highest standards and transform a heating device into a style statement.



ETERIA LAVA ROMBI VERDI



ETERIA LAVA MATRIX



VERSATILITY

Eteria is adaptable to any residential structure and accommodation facility.

The outer cladding can be **modified** at any time for the **unique style** of your environment.



ETERIA DEKTON TRILIUM



Eteria can be used 365 days a year.
The heating function and the fire vision
are **distinct** from each other.

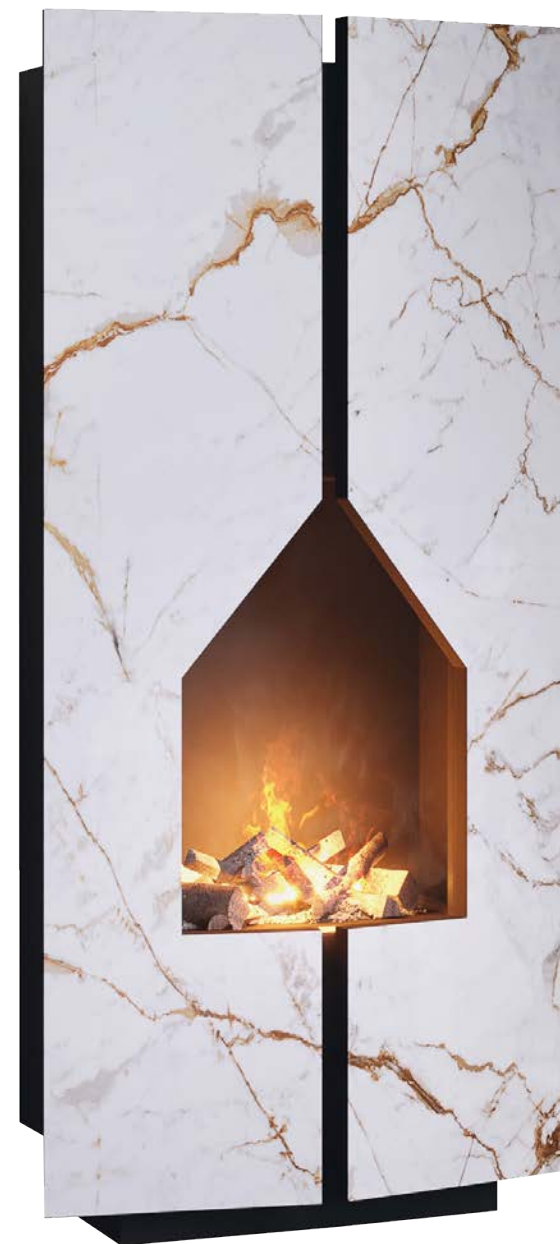
Eteria allows you to create a unique
atmosphere in every season.



SUSTAINABILITY

The choice of materials used was the key element of Eteria.
The **volcanic stone is completely natural**, and the finishes are made of 100% of **recycled powdered glass**.

Dekton is the only surface with 100% of the **compensated CO2 emissions** during the entire life cycle of the product.



Full electric
No Chimney
Zero emissions

Eteria is **100% environmentally** friendly, as it is combustion-free and entirely electric.

An **innovative operating logic and the specialised electronics control unit** provides maximise comfort and drastically **reduces electricity consumption**.

Average Electricity
consumption 0,5/KWh



ETERIA DEKTON ENTZO



WELL-BEING

Enveloping warmth and heating, uniformity and maintaining a healthy environment are the strengths that Eteria offers, thanks to its radiant heating.

The presence of the electric fire contributes to create a **unique atmosphere** without electromagnetic pollutants in total safety.





ETERIA LAVICA GALASSIA

ETERIA

Technical Specification

Height: **140 cm**

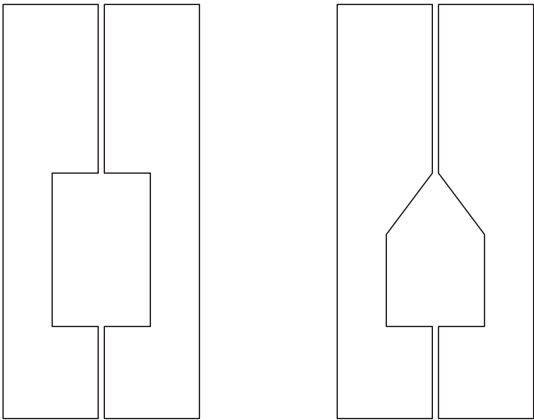
Width: **65 cm**

Depth: **36 cm**

Weight with Dekton
cladding: **60 kg**

Weight with lava stone
cladding: **70 kg**

Available models



Partner Selection



Free your imagination
Create your own Eteria with custom work

Registered Design

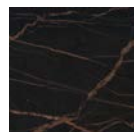




Awake



Entzo



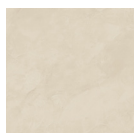
Laurent



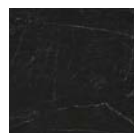
Micron



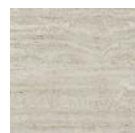
Morpheus



Nacre



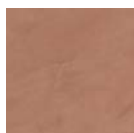
Somnia



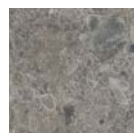
Tk06 Marmorio



Trilium



Umber



GK07 Ceppo



Vk03 Grigio

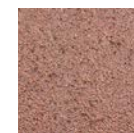
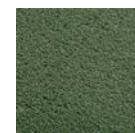
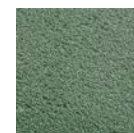
COSENTINO[®]

More information:
www.cosentino.com

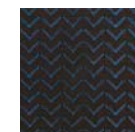
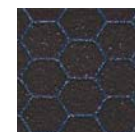
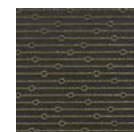
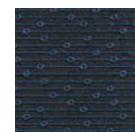
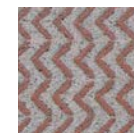
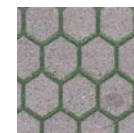
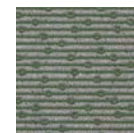
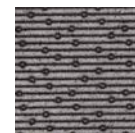
Natural Lava Stone



Full vitrified Lava Stone



Custom glass texture



ETERIA DEKTON FLUTED UMBER



ETERIA

THE ART OF EMOTIONAL WARMTH



PAJUSCO

DESIGN

Pajusco Design
Via dei Fiori, 1 - Sarego - Italy
+39 338 1168591
info@pajuscodesign.com
www.pajuscodesign.com