

**88**<sup>®</sup>  
*dent*

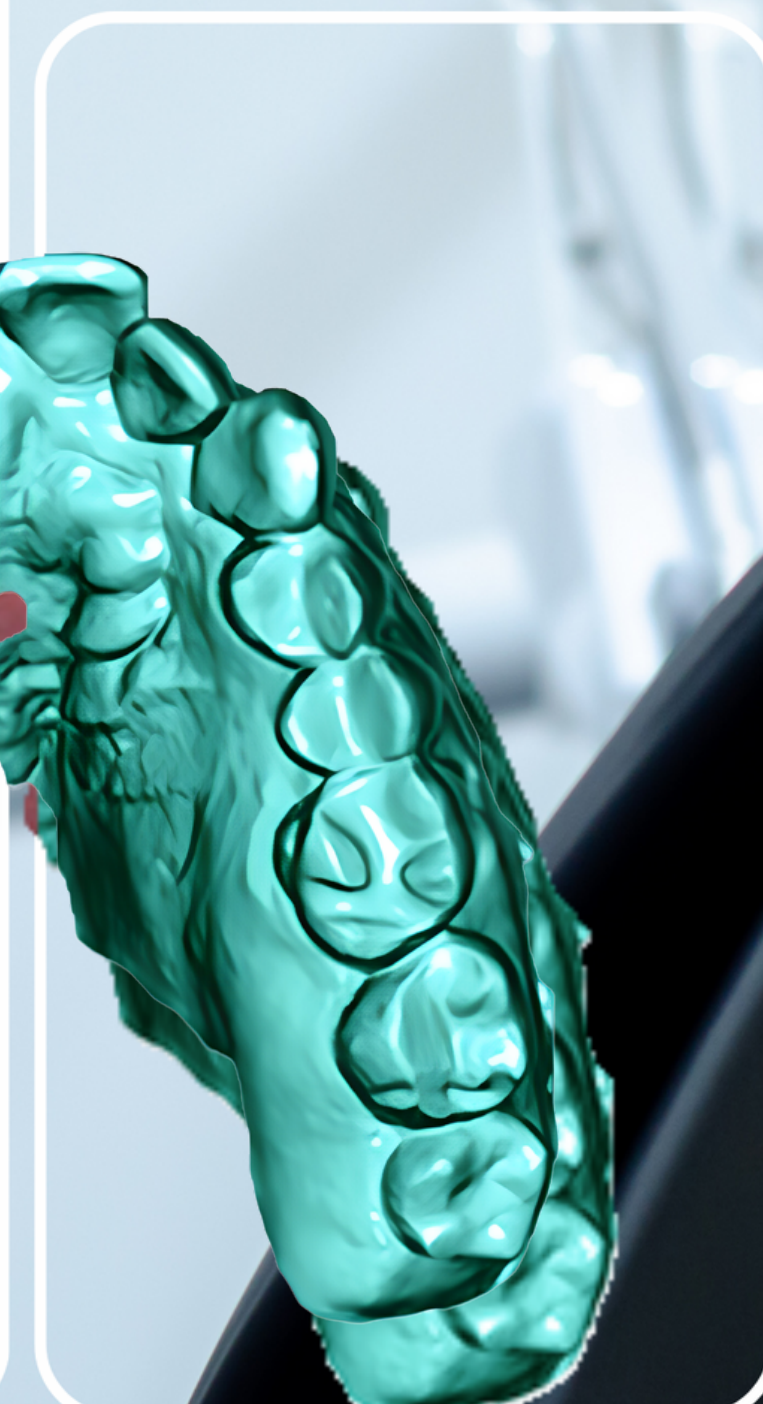
## New LAB line for the dental technician

USER 2024

**SCAN**

### Contact us

Via Pitagora, 11 - 20016 Pero MI  
02 8853 501  
[www.88dent.com](http://www.88dent.com)  
[info@88dent.com](mailto:info@88dent.com)





# SCAN

3D scanning is the process that allows you to capture the shape of the surface of an object in three-dimensional space and view it in 3D. Thanks to this process it is possible to obtain not only the exact measurements of the real object but also the digitization of all its parts. The more accurate the information collection is during the scanning process, the greater the fidelity of the virtual model we will be able to obtain.



# ATON4PLUS

## THE HIGH SPEED BENCH SCANNER

### The benchtop scanner with surprising performance

The ATON4PLUS dental scanner has undergone significant aesthetic and performance improvements to offer an optimal user experience. Thanks to its powerful performance, hidden under a compact and slim appearance, comprehensive functions, ease of use and superior efficiency, it is able to satisfy all needs in terms of fixed restorations, removable restorations, dental implants, orthodontics and other dental applications. This level of technical innovation takes the scope of dental work to a new higher level.

## FOCUS



#### NECESSARY

ATON4PLUS guarantees precision <8 microns



#### ULTRA-FAST SCANNING

Only 12 seconds to scan the entire arch  
Unsectioned model scanning: 14s Post core: 33s All-in-one: 20s Triple tray: 70s  
True color texture scanning: 16s



#### NON-SECTIONED MODELS

Detects the fine preparation in depth on non-sectioned prosthetic models and the areas of interest on orthodontic models



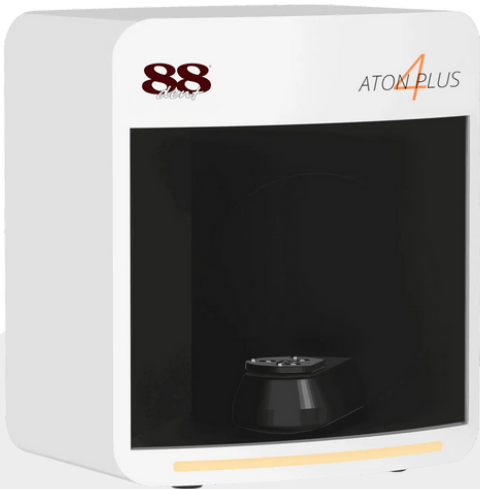
#### WIDE APPLICATIONS

Scanning of models: sectioned, complete (veneers), implant and orthodontic



#### TRUE COLOR TEXTURE

Perfectly renders the color of the model with realistic textures



### How to make the most of the potential of the ATON4PLUS scanner

The performance of the ATON4PLUS scanner reaches maximum productivity with Cad Lynx Evolution. The automated functions that characterize the Cad Lynx Evolution software allow the user an optimized result and a considerable saving of time.

### The advantages of the ATON4PLUS scanner

#### 1 FREELY CHANGE SCANNING STEPS

Easy drawing on the model or marking for model castings thanks to three different light colors (blue, white and red) and the function that allows you to adjust the intensity of the light in real time

#### 2 FILL THE HOLE ON THE STUMP

There is no need to manually add wax, the software automatically fills the screw holes

#### 3 INTEGRATED WORKFLOW

compatible with Cad Lynx Evolution and the main CADs on the market

#### 4 MARK THE MARGIN LINE

Mark the margin line directly in the UPACD software after scanning, reducing tooth design time.

#### 5 INSTALLATIONS

Scan-body scanning for the creation of abutments and crowns screwed onto implants

#### 6 MODEL SCAN

Possibility to scan plaster models, segmented and non-segmented

#### 7 PHYSICAL SCAN OF ARTICULATORS

Opportunity to scan even large articulators, directly in the scanner

### Why choose the ATON4PLUS scanner?

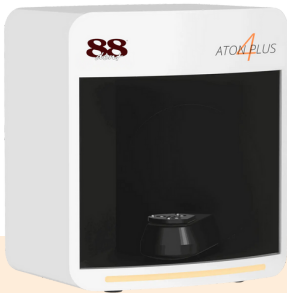
- Speed and precision
- Self-calibrating brightness
- Latest generation acquisition software
- Texture readings
- Articulator
- Triple tray impression reading
- Software included
- All-in-one scanning, triple tray one-click scanning
- Detect margin line, true color texture scanning



SCAN

# ATON4PLUS

THE BENCHTOP SCANNER, IN COMPACT SIZE ALSO  
SCANS IMPRESSIONS



SCANNER  
ATON4PLUS

cod. 88S-ATON4-PLUS

Click and discover on the  
site

## Possibility of bundles

Scanner+ PC + CAD  
Software + Training+ 8K  
Printer (FREE)

### \*ACCESSORIES INCLUDED

USB cable	1
Power cable	1
Blue Tack	1
Calibration plate	1
Scanning plate	1
Dongle	1
Screw Plate	1
Thickness	1
Imprint holder	1
Multi-die plate of 6	1
Multi-die plate of 12	1

## Technical specifications

Rooms  
2x1.3 Mp

Accuracy/Precision  
< 8 microns

Outgoing files  
AWL UM PLY OBJ

Technology  
Custom blue light/multi-color scanning

Dimension (DxWxH)  
355\*268\*384 (mm)

Weight  
9.5kg

Assets  
2

Interface  
USB 3.0

Full arch scan time  
12 seconds



- |                         |                               |                                 |
|-------------------------|-------------------------------|---------------------------------|
| ✓ Automatic Alignment   | ✓ Multi Die scanning          | ✓ Adaptive color and brightness |
| ✓ Automatic Calibration | ✓ Die scanning on model       | ✓ Compatible with 3D mouse      |
| ✓ Texture Scanning      | ✓ Scanning on implants        | ✓ Scanning Models               |
| ✓ Fingerprint scanning  | ✓ Single/triple tray scanning | ✓ Scanning Dies                 |
|                         | ✓ Scanning with articulator   |                                 |

### MINIMUM COMPUTER SYSTEM REQUIREMENTS

**CPU** Intel Core i7 8th Gen or higher

**Memory** 8GB/16GB or higher

**Hard Disk** Non less than a 300Gb.(es. SSD 120G+HDD 1T)

**Graphic Card** GeForce GTX 1050 or higher

**Operating System** Win7/10 64-bit professional

**USB** USB 3.0

**Motherboard** A USB 3.0 certified motherboard is recommended

### EXTERNAL POWER REQUIREMENTS

**Nominal voltage** CA 110-240 V,

**Rated current** 50 Hz

**Rated frequency** 50-60 Hz

# iAton S

## THE HIGH PRECISION SCANNING SYSTEM: FAST AND INNOVATIVE

### Improve communication with your dentist

iAton S allows you to take digital impressions quickly, precisely and smoothly by generating 3D models of the patient's oral cavity, providing all the necessary information, in high definition, improving communication between the dentist and dental technician. The supply includes 6 ergonomic tips.

## FOCUS

#### iAton S was designed for various types of scanning



##### **SIMPLE ACQUISITION OF UPPER AND LOWER ARCH**

Commonly used for orthodontic designs. The software allows you to compare a further scan of the patient acquired to ongoing treatment.



##### **ACQUISITION IN THE PROSTHETIC FIELD**

The software includes an additional scan of provisional anatomies to be used as wax-ups



##### **ACQUISITION IN THE IMPLANT FIELD**

The software provides an additional scan per scanbody necessary for the spatial repositioning of the implant in the Cad environment



### iAtonS: scanning at your fingertips

The resistant compact aluminum case makes iAton S an easily transportable tool suitable for new working dynamics. The advantages of iAton S can be appreciated from the first use: its manageability and easy use make it indispensable in the digital workflow, providing efficiency and precision.

The handpiece stands out for its lightness and small size. Furthermore, the absence of the fan in favor of the new toe cap heating system guarantees a silent and effective anti-fogging system. A latest generation software is able to plan PC updates in order to guarantee maximum scanning performance, being able to choose between different acquisition speeds based on the performance of your laptop.

The system is cloud, which allows for easier access via account, allowing easy communication between professionals.

The calibration system is automatic via USB cable and is suggested by the software itself. Finally, the product warranty is extended to 2-3 years.

### iAton S: the hi-tech solution for your patients

iAton S is an amazing solution for your patients:

- 1 Avoid complicated and annoying operations
- 2 Ensures benefit and relaxation
- 3 Conveys professionalism and innovation

Thanks to its compactness and small size, it gives the comfort that no other system can currently give to your patients. The patient will certainly be more relaxed than in the past. iAton S does not require the use of powders for scanning and thanks to the open scanning system it interfaces with all software on the market creating STL, OBJ, PLY files. Costs and times of use decrease radically, while the value of the performance increases!

### Why choose iAton S?

- 🦷 Greater comfort for the patient
- 🦷 Speed
- 🦷 No need for scanning powder, impression trays or pastes and chewing waxes
- 🦷 High precision, accuracy (scan distortion of only 7 Microns)
- 🦷 Easy to handle
- 🦷 Convenient to carry
- 🦷 Interchangeable and autoclavable tips for total protection from infections
- 🦷 High definition color scanning
- 🦷 Gyroscope for flexibility in movement
- 🦷 Open scanning system that interfaces with all software on the market and creates STL, PLY files and customized encrypted system with PTY
- 🦷 No royalties to pay
- 🦷 Scanning of models and impressions
- 🦷 Entire scan management via button
- 🦷 Easy and intuitive software
- 🦷 Blue light
- 🦷 Button allows you to navigate through the workflow arriving at the final calculation
- 🦷 Plug and play - direct connection to the PC via USB 3.0 port without power cables



# iAton S

The high precision scanning system: fast and innovative

## iAton S products



**SCANNER  
INTRAORALE iAton S**  
cod. 88S-smartios

+



**LAPTOP PER SCANNER  
INTRAORALE**  
code. 88S-LPIOS



**8 HOUR  
TRAINING AND  
INSTALLATION  
COURSE**  
cod. 88S-CORSOFORMIOS

[Click and discover on the site](#)

### \*CONTENTS OF THE CASE

Calibrator	1
Tip	1
Head user manual	6



## Technical specifications

6 different TIPS  
Autoclavable

TIPS size (WxWxH)  
83.4x19.6x14.6 mm

Dimension (DxWxH)  
221 x 27 x 25 mm

Weight  
138 gr

Outgoing files  
STL, PLY, PTY


Scan Depth  
20 mm

Scanning Technology  
Coded structured light

Scanning time of both arches  
< 5min

Interface  
USB 3.0

Field of view  
18x16 mm



To ensure the correct functioning of the iAton S scanner software, you must meet the following minimum requirements - both for the computer and for the power supply:

### MINIMUM COMPUTER SYSTEM REQUIREMENTS

<b>CPU</b>	i7-7700k (3.2 GHz; quad-core; 8-thread) or higher
<b>RAM</b>	DDR4 2400 16 GB or higher
<b>Hard Disk</b>	SSD 120 GB or higher
<b>Graphic Card</b>	GTX 1060 Memory 6 GB or higher
<b>Operating System</b>	Windows10* 64 bit or higher
<b>Display</b>	Resolution 1920x1080 or higher



info@88dent.com

88dent.com

