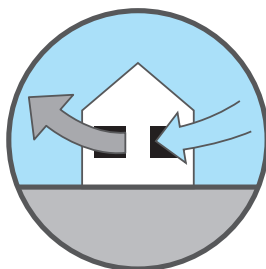




## Residential & Commercial **Extract Ventilation**





## Clear as the air

**The indoor air quality is essential to ensuring good quality of life.** We have passionately worked for over 45 years with the objective of manufacturing not simply fans, but innovative, technologically advanced, environmentally friendly and human health focused products.



## Strong as our prospects

The path followed by our company is part of the history of a large German industrial group, which started as early as 1928, the year when Christian Maier set up Maico Elektroapparate. Since then, the group has been able to build up a well established industrial reality and to acquire the technological and commercial know-how which has allowed it to become one of the top names in the ventilation industry. In the last few years, the group focus to grow on a global level has been speeded up and materialised with important investments in emerging markets: a culturally exciting and highly promising scenario.

## Green as the future

Problems like global warming and atmospheric pollution affect us not just as a company working with air but also as human beings. For this reason all our efforts aim to investments, industrial process and products that lead the way in terms of efficiency, cost-effectiveness and environment respect. Many are the rules today that show an ever increasing desire to breathe clean air, from the Kyoto protocol to the many building regulations; we are proud to accept the challenge because we strongly believe that we must work together to win the battle for a clean environment for all. Why not say it, **"it's our great aspiration!"**



  Dal 1970 la ventilazione made in Italy

For more than 45 years our product range has followed a seamless thread: from the first fans, Elicent policy to combine design, practicality and advanced technology is easy to see. The result is an outstanding Italian product which has earned wide recognition around the world. All our production is 100% made in Italy, in Lonato del Garda (Brescia) where we design and produce all the fans that are then exported in more than 70 countries.



Our production is CE certified and compliant with ErP Directive 2009/125/CE and EU Regulations 327/2011 and 1253/2014.

# Guidelines for a correct ventilation

## Selecting the correct fan

### Extraction is always made from humid/polluted premises:

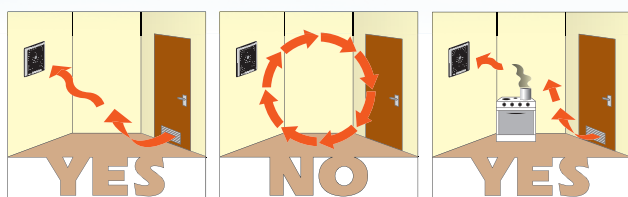
kitchens, laundries, toilets, bathrooms, bars... To choose the fan airflow needed for a specific application, use the following calculation:

$$\text{Airflow} = \text{volume of the room in m}^3 \times \text{number of air changes per hour}$$

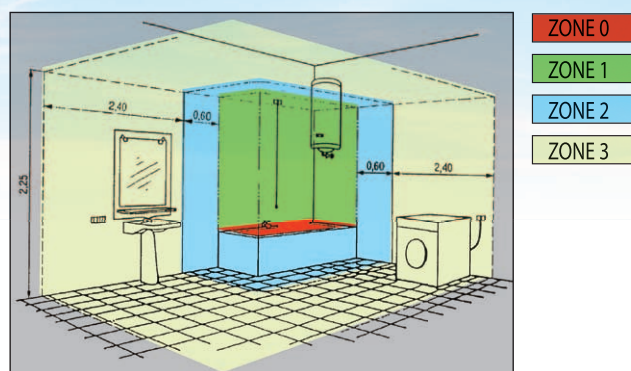
Type of room	Air change per hour
Kitchens	6 - 10
Bathrooms and shower rooms	8 - 12
Toilets	8 - 10
Public toilets	10 - 15
Restaurants and bars	10 - 12

## Setting the fan correctly

- Fans should always be mounted in the furthest window, wall or ceiling from the main source of air replacement to ensure airflow across the room and avoiding short circuiting of air movement.
- Air replacement should be ensured via internal grilles in the door, ceiling or wall.
- Fans should be located as high as possible in the window or wall nearest to smells or streams but not directly above eye-level grilles or cooker hoods.



- If installing in a bathroom, the fan must be located where it cannot be touched by a person. Elicent range of 12 Volt SELV fans (Safety Extra Low Voltage) can be installed in zone 1. Fans with IPX4 protection can be installed in zone 2. Fans with an IPX2 protection must be installed in zone 3.



## Choosing the right Elicent version

IDEAL SOLUTION
SUITABLE
NOT RECOMMENDED

TYPE OF PREMISE	STANDARD	PULL CORD SWITCH	TIMER/COMFORTIMER	MHT / COMFORT HYGRO	MHY SMART	PIR	2 SPEED
TOILET	✓	✓	✓	✓	✗	✓	✓
PUBLIC TOILET	✓	✓	✓	✓	✗	✓	✓
BATHROOM	✓	✓	✓	✓	✓	✗	✓
SHOWER ROOM	✓	✓	✓	✓	✓	✗	✓
KITCHEN	✓	✓	✓	✓	✓	✗	✓
LAUNDRY	✓	✓	✓	✓	✓	✗	✓
OFFICE	✓	✓	✓	✗	✗	✗	✓

## Operation

**STANDARD version**  
Light/remote control switch.

**PULL CORD switch**

**TIMER**  
Integral electronic timer adjustable from 3 to 25 minutes.

**COMFORTIMER**  
Microchip Timer version adjustable from 3 to 25 mn with overrunning at low speed for an energy saving up to 64% compared to a standard timer version. The low speed guarantees increased silence and energy saving though maintaining a fully satisfying exhausting efficiency. Version particularly suitable for hotels, hospitals, private homes and for all those applications where silence is a must.

**MHT humidity control**  
Integral humidity control adjustable from 40 to 80% of R.H.

**MHY Smart humidity control**  
Provided with the latest microchip technology. Operation: automatic and progressive increase / decrease of the motor speed according to the percentage of R.H.

**COMFORT HYGRO**  
Combines to Comfortimer technology a microchip humidity sensor adjustable from 40 to 80% of R.H.

**P.I.R.**  
Passive infra-red sensor with integral adjustable timer from 3 to 25 minutes.

**SELV**  
Low voltage version.

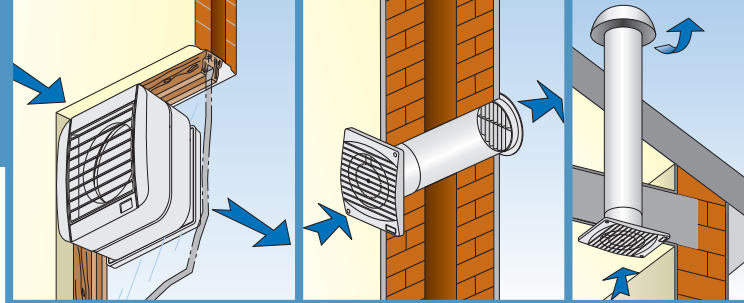
**2 V**  
Double speed version (24 hours running at the lowest speed).

**EC MOTOR**  
High efficiency, electronically controlled, brushless motor.



# AXIAL FANS

Axial fans are designed to extract large volumes of low pressure air directly to the outside or over short duct lengths. They can be suitable for wall, window, duct and ceiling application.

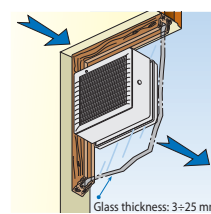


## Window installation

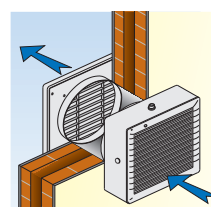


### VITRO

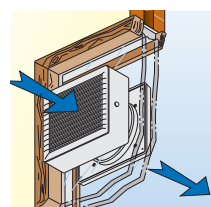
- Complete range: 6, 9, 12 inches
- Manual or automatic versions, potentiated or low capacity
- 9" and 12" (automatic versions) suitable for reverse running.
- Ideal for commercial environments.
- Airflow up to 1.400 m<sup>3</sup>/h.
- Accessories for double window, double glazed window and wall installation upon request.



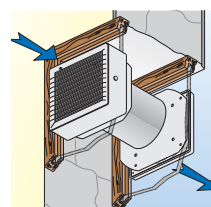
WINDOW



WALL



DOUBLE GLASS

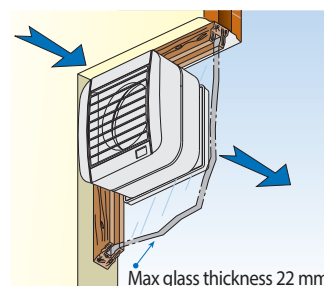


DOUBLE WINDOW



### ECOWIND

- 3 sizes: Ø 100, 120, 150 mm
- Automatic shutter (with neon running light)
- Supplied with assembled kit for window installation

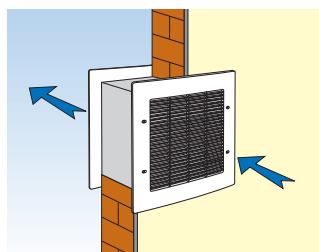


## Wall installation



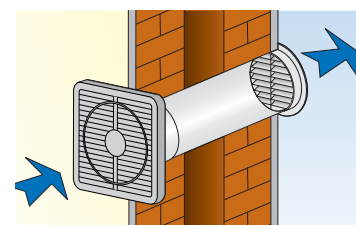
### BUILT-IN

- Extract/Intake models available in 2 sizes: 9" and 12" (with same wall hole sizes)
- Built-in 9 available in Low capacity version
- High efficiency (airflow up to 1.630 m<sup>3</sup>/h)
- Ideal for commercial environments.



### JOLLY

- Complete range ø 100, 120, 150 mm.
- Airflow up to 320 m<sup>3</sup>/h.
- Back draught shutters upon request.
- Compact and easy installation.





## Wall and ceiling installation



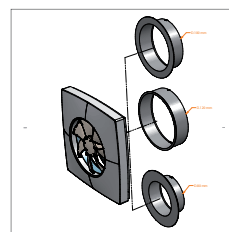
### The innovative and stylish universal fan:

- Multi diameter: the fan can be mounted on ducts with Ø 80, 100 and 120 mm
- Integrated smart functions, settable and controllable on board or via remote control
- Multi tension: 110-240V 50/60 Hz
- Very low consumption: 1 - 3,8 W
- 12 V highly performant DC motor
- Very silent innovative motor impeller: 15 - 29 dBA
- Ultra slim profile, available with fix grill



### Removable motor-impeller

Frame is featured with a quick-connection in order to facilitate and speed up the installation.



### Multiple diameters in one fan

**@max** - The modular axial fan is provided with 3 connection outlets of Ø80 - Ø100 - Ø120 mm which allow it to be connected to ducts of different dimensions. The installation is fast and easy. The outlet connectors can be provided with non-return flaps (Ø 100-120 only)



### Integrated smart functions and service switch

**@max** is provided with different integrated smart functions which optimize its operation and reduce the energy consumption. Integrated service switch for easy maintenance.



### @-SMILE



- Unique model Ø100 mm with high aeraleic performance: airflow 90 m³/h - 71 Pa
- Low consumption (max 7,5 W) and silent running.
- Suitable for medium length ducting
- Ball bearing motor
- Back-draught shutters



### ELEGANCE



- Complete range ø 100, 120, 150 mm.
- Airflow up to 315 m³/h
- Innovative design with front cover and lateral intake.
- Ball bearing motor
- Model Elegance EC 2V with EC brushless motor in Ø100 mm
- Back-draught shutters



### @-STYLE



- Complete range Ø 90,100, 120, 150 mm with neon running light.
- Model e-style Trend available in 100, 120, 150 mm (with no neon running light). Airflow up to 295 m³/h
- Back draught shutters on models 100, 120, 150



### MINISTYLE



- Unique model Ø100 mm, ideal for small premises
- Easy to install and extremely compact (front cover 17 mm, height and width 14 mm)
- Airflow 90 m³/h
- Back draught shutters on request



### ECOLINE



- Complete range Ø 100, 120, 150 mm
- Available with fixed grilled (ECO GF), Gravity shutter (ECO GG) and Automatic shutter (ECO A)
- Airflow up to 320 m³/h



### MURO



- Complete range Ø 100, 120, 150 mm
- Model MURO 100 A with electric opening of the grille.

### TUBO



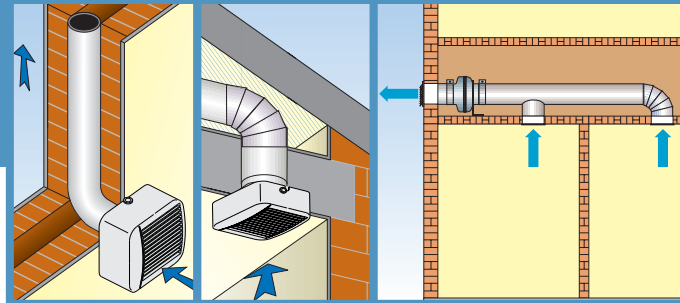
- Complete range 100, 120, 150 mm
- Suitable for intake / extract ventilation
- Ideal for conveying air between two separate rooms
- Invisible and efficient: (no fan into the room)
- Airflow up to 320 m³/h
- Metal or Technopolymer versions





# CENTRIFUGAL FANS

Centrifugal fans are designed to extract air over long distances and to overcome the resistance of long length and curved ducting. They are suitable for wall, ceiling, roof installation, in single or multiple ducts.



## Duct installation

### ELIX



- Unique model for duct Ø 100 mm with central outlet.
- Innovative design with flat front cover and lateral intake.
- Airflow 97 m³/h - Pressure 151 Pa
- Available with EC brushless motor
- Sliding filter in PP, removable and washable
- Back draught shutters



### ELPREX



- Powerful centrifugal duct fan Ø 100 mm with decentralised outlet.
- Innovative design with flat front cover and lateral intake.
- Suitable for surface or built-in installation (wall/ceiling mounted).
- Airflow 221 m³/h - Pressure 208 Pa
- Casing for built-in installation on request
- Removable and washable filter in PP
- Back draught shutters.



### FLUX



- Centrifugal duct fans with central outlet
- 2 models: 100 and 250, Ø 100 and 120 mm
- Max airflow 232 m³/h - max pressure 195 Pa



### RADIA



- Powerful centrifugal fan with decentralised outlet
- 3 models for duct Ø 100 mm
- Airflow up to 220 m³/h - Pressure up to 277 Pa
- Back draught shutters
- Removable and washable filter



## Outdoor installation



### EXT



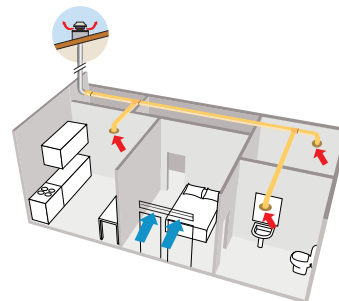
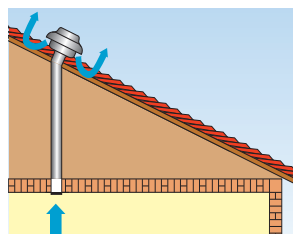
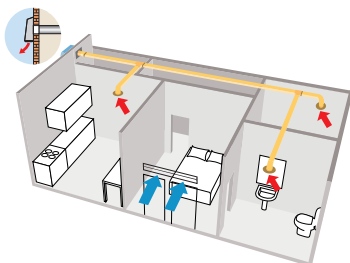
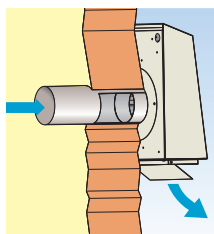
- 8 models Ø100 to 200 mm
- Ideal in environments where aesthetics, space or noise level are of concern.
- Easy and cost-effective solution for a centralised ventilation requirement.
- Airflow up to 908 m³/h - Pressure up to 609 Pa
- Ball bearing motor.



### MRF



- 7 models Ø100 to 315 mm
- Compact sizes, available with or without square roof curb.
- Easy and cost-effective solution for a centralised ventilation requirement.
- Airflow up to 1222 m³/h - Pressure up to 838 Pa
- Ball bearing motor.



### TIRAFUMO

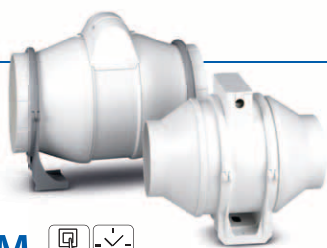


- Ideal for improving the draught of residential fireplaces
- Suitable for chimneys with a section of max 150 x 150 mm (equivalent ø 170 mm) and air temperature of max. 200°C in continuous running
- Easy installation (just Plug & Play). Supplied with counterbase to wall-up, plug-in junction box with service switch, eyebolts and electronic speed control R15.
- Airflow 850 m³/h - Pressure 190 Pa
- Steel or copper versions.





## In-Line installation



### AXM



- Mixed-flow in-line duct fans in PP
- Asynchronous ball bearing motor, 2 and 3 speeds, depending on model.
- 5 sizes: 100, 125, 150, 160, 200 mm
- Airflow up to 910 m<sup>3</sup>/h - Pressure up to 300 Pa



### AXC



- 11 models Ø100 to 315 mm.
- Airflow up to 2.350 m<sup>3</sup>/h - Pressure up to 902 Pa.
- Easy and cost-effective solution for a centralized ventilation requirement.
- Wall fixing brackets included.
- Ball-bearing motor. Backward curved blades



### AXC TP



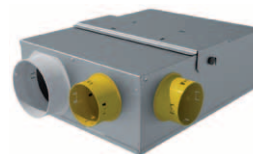
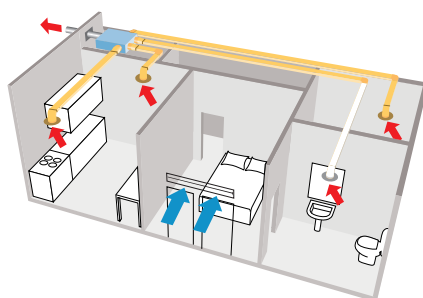
- 4 models with Ø from 100 to 160 mm
- Lightweight and silent
- Made in self-extinguishing V2 technopolymer



### MICROBOX



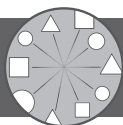
- Super-slim centrifugal box Ø 125 mm (1 to 3 spigots Ø 80 mm)
- AC or EC versions
- Max airflow 310 m<sup>3</sup>/h
- All models speed controllable



### MULTIBOX



- Super-slim centrifugal box Ø 125 mm (1 to 3 spigots Ø 80 mm)
- AC or EC versions
- Max airflow 460 m<sup>3</sup>/h
- All models speed controllable



## SENSORS - CONTROLLERS - ACCESSORIES

### SENSORS



#### R10 TIMER Remote timer

- Electronic timer, adjustable from 3 to 25 minutes



#### R10 HY Remote Humidity Sensor

- The sensor automatically switches ON/OFF the fan according to the detected level of relative humidity, adjustable from 40 to 90%.



#### R10 P.I.R Remote Passive Infrared Sensor

- The fan goes on any time the sensor detects a human presence in the room
- Provided with integral delay timer adjustable from 3 to 25 minutes, which keeps the fan running for the pre-set period after the room is vacated
- Ideal solution for public toilets.



#### R10 AQ5 Remote Air Quality Sensor

- The sensor reacts to tobacco smoke and unpleasant odours
- It automatically switches the fan ON/OFF according to the detected air quality level, manually adjustable.



#### CO2 Sensor

The sensor automatically switches the fan on when it detects a CO<sub>2</sub> concentration in a range of 500 to 2000 ppm.

#### R10 Sensors

- Surface or built-in installation
- Suitable for home automation systems
- Max load 4A,
- 110 x 80 x 42 mm

### SPEED CONTROLLERS

Infinitely variable electronic controllers by potentiometer



**R10**  
1A



**R15**  
1,5A



**RV1**  
1 - 4A

### SPEED CONTROLLERS WITH TRANSFORMER



**RLS 2V**  
2 speeds



**RLS 3V**  
3 speeds



**RVS**  
5 speeds  
0,5A



**RVS1**  
6 speeds  
1,5A

### REVERSIBLE SPEED CONTROLLERS



**RVS/R**  
3 speeds  
0,5A



**RVS/R**  
5 speeds  
0,5A



**RVS/R PLUS**  
6 speeds  
1,5A

A wide range of grills, shutters, ventilation grilles are available.



The headquarter of Maico Italia Spa, Lonato del Garda (Brescia), Italy



#### Maico Italia S.p.A.

Via Maestri del Lavoro, 12 - 25017 Lonato del Garda (Brescia) Italia

Tel. +39 030 9913575 - Fax +39 030 9913766

[sales@maico-italia.it](mailto:sales@maico-italia.it) / [www.maico-italia.it](http://www.maico-italia.it)



Member of:



We reserve the right to modify any technical data without notice.  
Different voltage and frequency upon request.

All trademarks are the property of Maico Italia Spa - All rights reserved.

Follow us:

