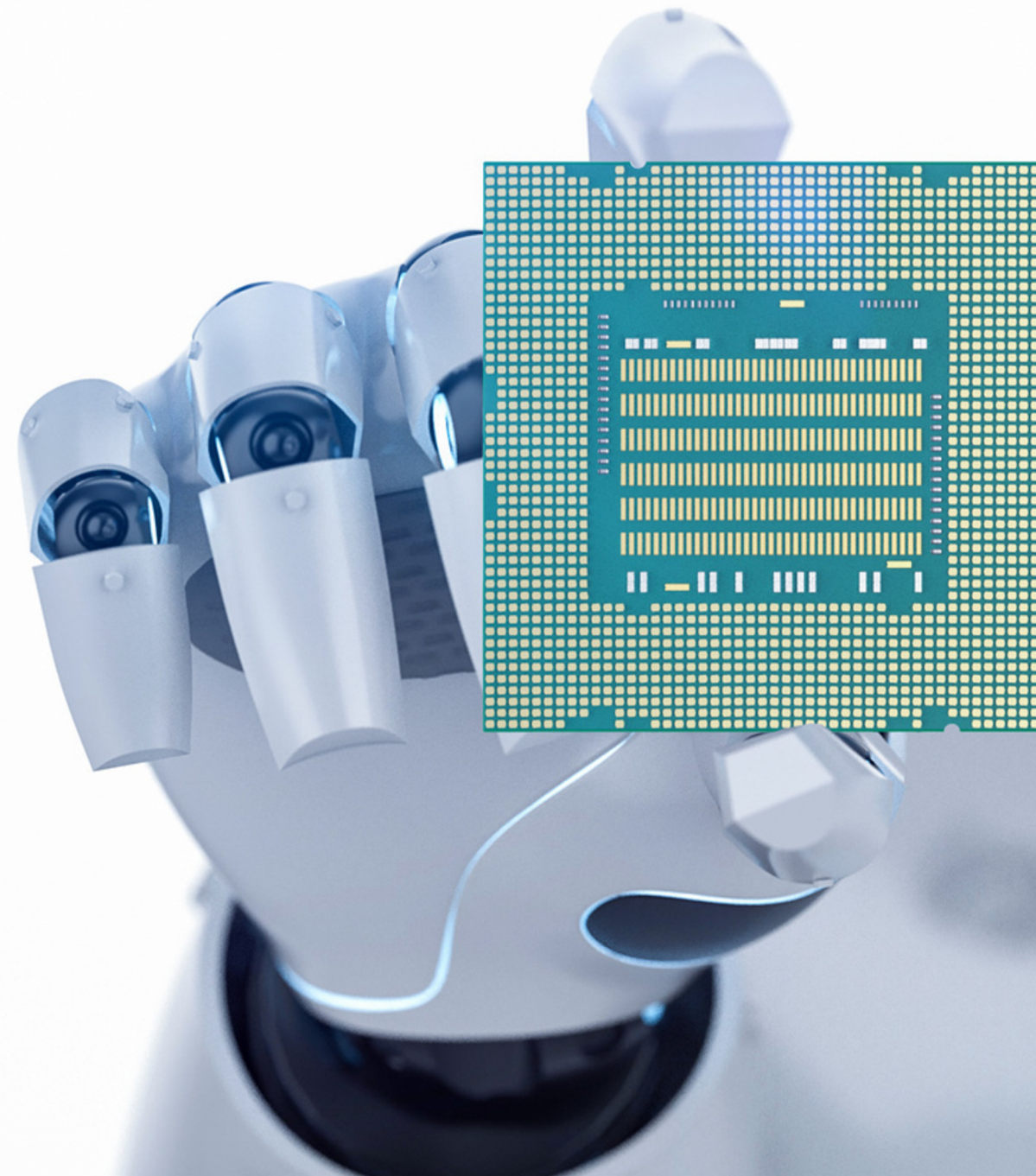




You can program your ALMEC products independently

with ALMECLab, based on
LogicLab, an IDE platform that
complies with the international
standard IEC 61131-3





Easy Implementation

Seamless communication between hardware and software reduces setup time.



Rapid Development and Advanced Debugging

- Simulation and testing of control logics before implementation.
- Real-time diagnostics to monitor the status of variables and machines, identifying problems quickly.



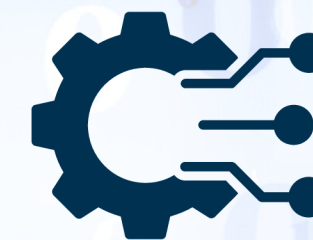
Simplified Maintenance and Updates

- Remote software and firmware updates.
- Changes to control logic without interrupting the production cycle



Multi-language Programming

- Ladder Diagram (LD)
- Structured Text (ST)
- Function Block Diagram (FBD)
- Sequential Function Chart (SFC)



Customization and Scalability

Customization of control logics allows to adapt to specific industrial needs, easily scalable.

With ALMECLab, ALMEC offers its customers an intuitive tool to optimize automation independently.



- ✓ Simplify programming and reduce development times.
- ✓ Real-time diagnostics and advanced debugging features improve system stability.
- ✓ Access to advanced technologies such as IoT and Industry 4.0-based solutions.
- ✓ Adaptability to different application needs and industrial environments.

ALMEC LAB



LOGIC LAB