



Wood Flooring Production



Brochure



ADMINISTRATOR

MAURO MARANCO

mauromaranco@stema.eu

MARKETING RESPONSIBLE

STEFANO MARANCO

stefanomaranco@stema.eu

PRODUCTION RESPONSIBLE

MASSIMO LALLE

massimolalle@stema.eu

IMPORT RESPONSIBLE

ALESSANDRA BUCCHI

alessandrabucchi@stema.eu

ADMINISTRATIVE RESPONSIBLE

MAURO LEONARDI

mauroleonardi@stema.eu

ADMINISTRATIVE OFFICE

paolacacciotti@stema.eu

segreteriafrancore@stema.eu

segreteriaamorsasco@stema.eu



Stemau S.r.l. was born in the latest years '70 in Rome, producing and trading high quality wooden floors, addressing to Companies and private Customers.

The engagement, the passion, the professionalism and the attention towards new trends of furnishings and design, the cure in the details, the quality and the choice in raw materials certificated and carefully selectioned, made *Stemau* S.r.l. a leader firm in the wood flooring area, which can satisfy all the personal, aestatical and economic needs.

Stemau S.r.l. transforms the wood in art. The whole production cycle, from cutting to drying process, from drawing to project, from choice to sectioning, from calibration to listels, from planing to processing, from varnishing to packaging, with raw materials from all over the world, is all made in our factory in Rome and that's why it is 100% Made in Italy certified and CE marked.

The processing and the varnishing produced by *Stemau* S.r.l. are several, thanks to the big number of wooden species worked, to the industrial modern machineries and to the professionalism of the staff. Indeed, *Stemau* S.r.l. realizes different sizes in Traditional Parquet, Prefinished Parquet, Floating Parquet, Decking, but also Laminated, SPC and WPC Flooring.

Stemau S.r.l. works and produces with the maximum respect for nature and the environment, using exclusively raw materials from areas and firms authorized to deforestation, in order to preserve and protect correctly and responsibly the natural communities and the forests, following severe ambiental standards.



Afrosmosia



Afrelia



Ipé



Iroko



Larch



Sapele

Le principali specie legnose



Walnut



Olive



Rosewood



Oak



Teak



Wengé



A wood flooring has different features:

- Wood species
- Class selection
- Dimension
- Finishing
- Upper solid wood layer thickness
- Laying cut



Appearance classes

When the wood is carved, it is divided into three different classes selections: Select, Nature or Rustic.

SELECT ○

This class selection presents every natural wood feature: colour variation and mineral strips. All of these cause a wooden flooring full of visual structure. This class selection doesn't have knots, nor plaster nor opened.

NATURE △

This class selection can have sapwood, knots of different dimensions, mineral strips, natural veinings, colour variations. Potential knots, cracks or imperfections can be filled with dark brown or wood colour plaster.

RUSTIC □

This class selection has the same aspect and features of the Nature one, but it has been cut differently. That's why we can see the central pith of the three, giving an high organic aspect.



MAIN WOOD SPECIES USED FOR:

SOLID WOOD PARQUET:
Afrormosia, Afzelia, European Larch, European Oak, European Olive, Iroko, Sapele, Teak, Wengé.

PREFINISHED PARQUET:
Afrormosia, Afzelia, European Oak, European Walnut, Iroko, Sapele, Teak, Wengé.

FLOATING PARQUET:
Afzelia, European Oak, European Walnut, Iroko, Rosewood, Teak, Wengé.

DECKING PARQUET:
European Larch, Ipé Lapacho, Iroko, Teak.



Production cycle

SOLID WOOD PARQUET:

- Cutting of the elements
- Listels
- Drying Process
- Working
- Selection
- Packaging

PREFINISHED PARQUET:

- Cutting of the elements
- Listels
- Drying Process
- Cutting of the lamellas from 3 to 5 mm
- Gluing on the panels
- Calibration
- Varnishing
- Section
- Working
- Selection
- Packaging

FLOATING PARQUET:

- Cutting of the elements
- Listels
- Drying Process
- Cutting of the lamellas
- Gluing on the panels
- Calibration
- Possible colouring

-Varnishing

- Section
- Working
- Selection
- Packaging

DECKING:

- Cutting of the elements
- Listels
- Drying Process
- Working
- Selection
- Packaging





To exalt the natural aspect of a wooden flooring, it's important to value and choose the right finishing, manufacturing and/or treatments.

The finishing can be varnish, oil or wax.



The finishing

The **Varnish finishing** is usually composed by a first base coat and then one or more varnish coats. The varnish, the number of the coats depends on the model, is used to form a film, usually transparent, that protect the treatment from the external stress (footsteps, water, use, scratches, uv rays, etc.), and it gives more hardness to the surface, so it will also be aesthetically better, and it simplifies the maintenance of the floor. The varnishing finiturer are usually carry out with solvent, oil or water based varnishes.

Usually the varnishes used are transparent ones, but you can choose coloured varnishes to customize your wood flooring. Varnishes have different level of brilliance, depending on the gloss. We can distinguish them into shiny, semi-shiny, glazed and opaque.

The **Oiled finishing**, made by a mix of natural oils and synthetic oils, give value to the veinings and the wood coloration. It makes its tone warmer and darker, it feeds the wood, impregnating it and making it more hard and resistant.

Waxed finishing, realized through different kind of natural or synthetic waxes, consent a good transpiration of the wood and make the surface high resistente to the footsteps and to the inception of spots and scratches, thanks to the formation of a protective coat.

To reinvigorate the coloration of the wood is better to use yellow or dark waxes.

A waxed flooring is really likable but it periodically needs to be waxed to avoid an opaque effect.



The oxidation process of parquet

All wood species, over time, are destined to change their color tone, considering that are living organic matter, which react with air and light.

Since wood is a photosensitive and photochromatic material, oxidation is a natural phenomenon, which occurs to direct or indirect exposure of wood to sunlight or air.

The oxidation process is a chemical reaction, that is a chromatic alteration, whose intensity depends on the substances that make up the wood.

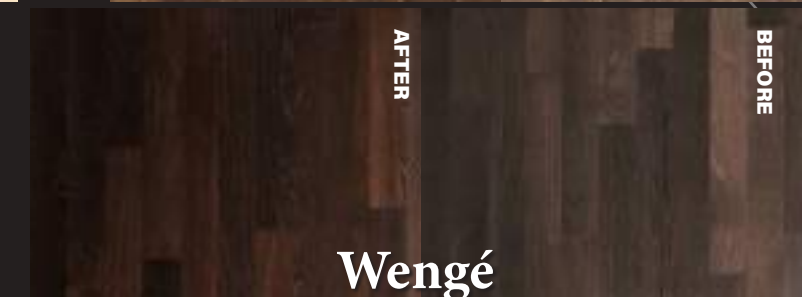
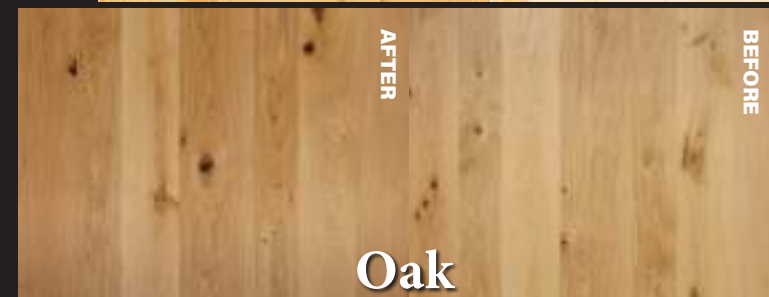
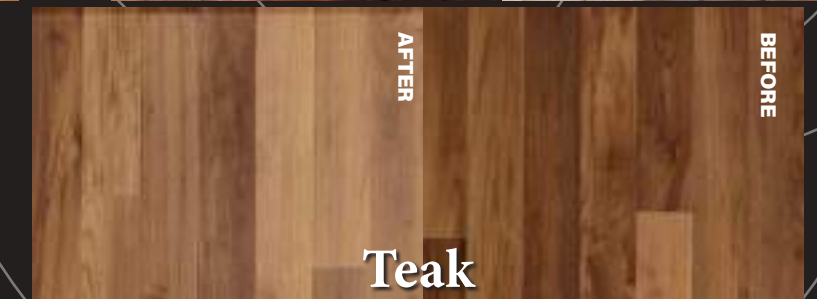
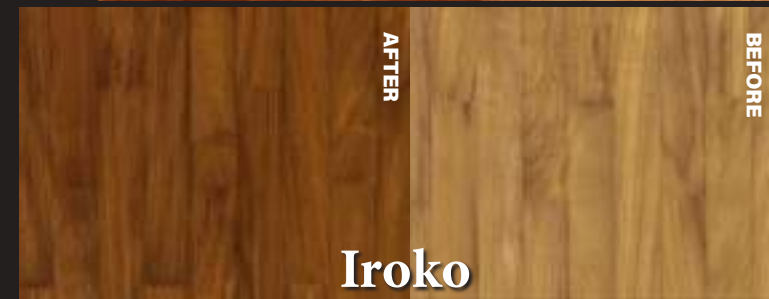
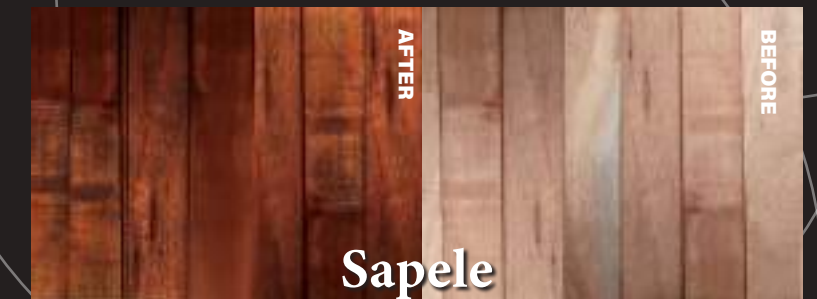
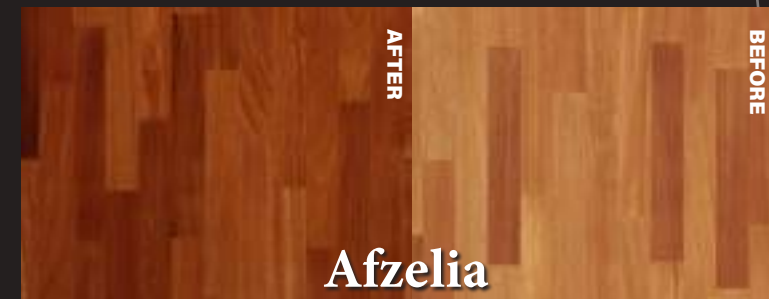
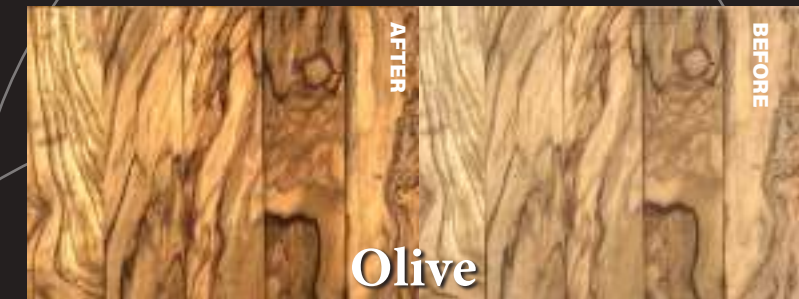
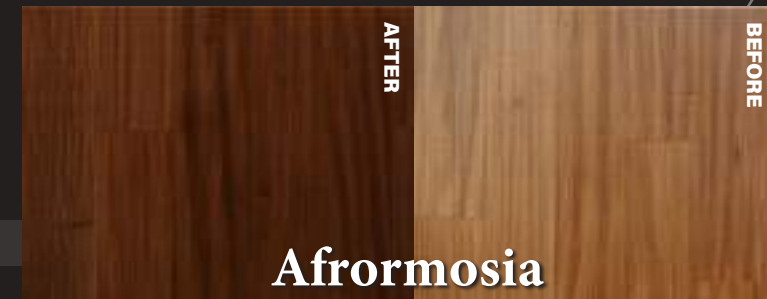
The wood oxidizes according to the amount of light it receives, reaching stability after a couple of years at most.

Photochronic changes occur with greater intensity in the first periods of exposure to light, and then stabilize over time. The oxidation process changes from one specie to another. In fact some woods, in contact with the sunlight, change their color more clearly than others, lightening or darkening their tones.

Those of European origin such as Oak and Larch have a low oxidation, which over time will tend to become warmer. There will not be a strong oxidizing action, but a tendency to warm up one's own shade.

Those of African or South American origin such as Afrormosia, Doussie', Iroko, have a much faster and more decisive oxidation, which tends to darken the original color.

Not all wood species with oxidation tend to darken, such as Teak, which over time tends to lighten its darker parts, conforming with the lighten ones.





Eternity

The collections



Unvarnished Oak



Recycled Wood



Tecnic



Life



The herringbones parquet



Skirting boards



Biggest



Ancient Rome



Victory



The steps

Eternity

SOLID WOOD PARQUET

"The elegance of the classic wood flooring, solid and long lasting"



Every wood flooring, entirely realized with the same wood, belong to this collection, without supportive layers. The laying consists in the slotting of the listonies or the pasting in the head sides of the slats, if they're not Tongue and Groove, or is possible to nail them down. It is long-lasting, resistant and robust. It is suitable for pattern, geometrical, mosaic or herringbones laying.

Solid Wood Parquet can be:
Lamparquet listonies, they need to be glued
It's a kind of flooring specific for the glued laying on the whole wooden surface. It can be glued on cement screed, wooden panels, pre-existing ceramic or marble flooring, the important is the base has a good density and resistance to the traction. After the laying, it's needed an environment adjustment that lasts for minimum 15 days, depending on the wood specie and the type.
Lamparquet listonies, they need to be nai-

led down or screwed on
It's a kind of flooring specific for the nailed down or screwed on laying on the whole wooden surface, on a structure or on wood joists drowned in cement.

Industrials parquet, they need to be glued
Since born it was destined to industrial and commercial spaces, but now the industrial parquet is suitable for residential spaces, bathroom and kitchen included, and for high transit places (like shops and offices), since it's particularly resistant. It's composed by small thin layer connected by a net, a paper or a particular adhesive tape. These supports will be removed during the sanding. This kind of wooden flooring is really cheap and economic.

Prices are variable, they depends on the wood species, on the dimensions (the more the slat is small, the more it's che-

ap), on the laying and on the finishing. Since the wastefulness of an industrial floor is really low, it is one of the cheaper.

The main wood species used are:
Afromosia, Afzelia, Iroko, Larch, Sapele Mahogany, Olive, European Oak, Asian Teak, Wengé.
The most adequate wood species for an industrial floor are European Oak, Merbau and Teak.

For the ordinary care is advisable to use a Hoover or antistatic cloth to remove the dust, and a microfiber rag with a specific detergent to remove spots and rings. For the extraordinary care is advisable to use specific protective products, to give sparkle and to protect the flooring from environmental agents. You should renovate a Solid Wood Parquet every 15-40 years, depending on the service.

Tecnic

2 LAYERS PREFINISHED PARQUET



"The technology, convenience and comfort of a engineered flooring"

Prefinished Parquet is a stratified flooring, composed by a thin upper solid wood layer (thin from 3 to 6 mm), glued on a wooden support (birch or poplar or fir or larch or another).

Since it's pre-finished in our factory, and not during the laying, it can be exposed to particular finishings, like colouration through pigments, white dekapé, brushing, brishing, micro-belevving on the sides (rounded off edges and not sharp), hand-made or not planning, serration and thermo-treatment.

It is already varnished or oiled and it's immediately ready to be laid and used.

It needs to be glued on the whole surface, so the laying is rapid, but it depends on the environment and on the dimension.

It is also suitable for pattern, geometrical, mosaical or herringbones laying.

Prices are different, depending on the wood species, on the upper solid wood layer, on the size, on the laying and on the finishing/manufacturing (varnishing, dekapé, planning, brushing, etc).

The main wood species used are: Afrormosia, Afzelia, Asian Teak, European Oak, European Walnut, Sapele Mahogany, Wengé.

For the ordinary care is advisable to use a Hoover or antistatic cloth to remove the dust, and a microfiber rag with a specific detergent to remove spots and rings. For the extraordinary care is advisable to use specific protective products, to give sparkle and to protect the flooring from environmental agents.

You should renovate a 2 Layers Prefinished Floor every 15-20 years, depending on the service.



Biggest

3 LAYERS FLOATING PARQUET

"The biggest size of a wood flooring unique in its genre"

All the wooden multilayer flooring belong to this collection (stratified), they're glued to each other with high resistant glue: the upper solid wood visible layer has a thickness of 2,5 mm minimum, the halfway birch or similar layer is thin from 4 to 8 mm, and the counterbalancing poplar layer is from 2 to 4 mm thin.

The laying is floating and the Tongue and Groove are stucked together on the four sides, or through a nailing down. It's ad-

visable to use a mat to avoid a possible comeback of the moisture.

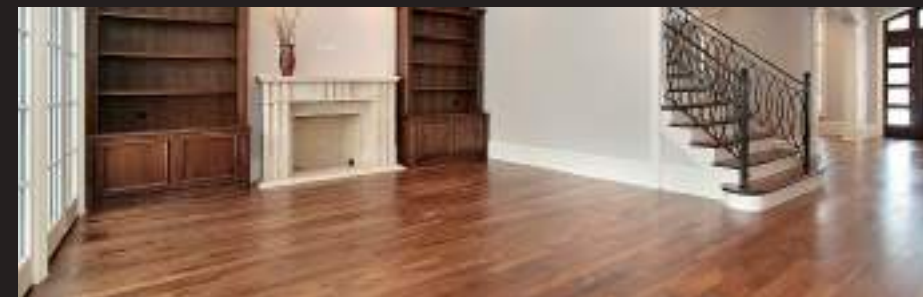
It's long-lasting, resistant, strong, sound-absorbing and thermo-isolating. It's also suitable for pattern, geometrical, mosaical and herringbones laying.

Prices are different, depending on the wood species, on the dimensions (the more the listony is small, the cheaper it is), on the laying and on the finishing.

On every Oak listony is possible to apply different natural or coloured finishings, 7 UV or oiled, and different kind of manufacturing/treatments (white dekape, whitened, brushing, planning, bevelling, serration, thermo-treatment). The most used wood species are: Afzelia, Iroko, European Oak, European Walnut, Rosewood, Teak, and Wengé.

For the ordinary care is advisable to use a Hoover or antistatic cloth to remove the dust, and a microfiber rag with a specific detergent to remove spots and rings. For the extraordinary care is advisable to use specific protective products, to give sparkle and to protect the flooring from environmental agents.

You should renovate a 3 Layer Floating Floor every 15-20 years, depending on the service.



Life

OUTDOOR DECKING PARQUET

"Nature and pure-state substance of wooden floor for outside you can lay down everywhere"

Decking is suitable for an external use and climate stresses (rain, sun, wind, etc). It is durable, elegant, resistant to cover all the outside places. The wooden species, in solid wood, used for Decking are, in fact, very resistant to the exposure of weather agents. It is ideal to cover all the outside places like terraces, gardens, courtyards, pool edges, gateway, platforms, gazebo, refreshment areas, piers, docks, boats.

The lay down is directly on the backgrounds, or on joists, with screws or exposed nails or with retractable clips. Decking can be laid down on several backgrounds (concrete, sand, gravel, grass) stable and well-leveled, where there is an adequate slope that allows the regular outflow of the water.

The prices change depending on the wood species and dimensions.

The most important wooden species used are: Ipé Lapacho, Iroko, Larch, Asian Teak, South American Teak.

For the ordinary cleaning it is recommended to use a brush, or with water at high pressure, or with a simple water damp cloth or a detergent.

For the extraordinary cleaning it is recommended to use specific products to give brightness and to protect the floor from the weather agents.

In addition, to prevent the discoloration process it is recommended to use a specific impregnant, at least twice a year, before winter season and before summer season.



Life

OUTDOOR DECKING WPC



"The innovative outdoor flooring, ecological, water resistant and long-lasting"

WPC (Wood Plastic Composite or Wood Polymer Composite) Decking Composite for outdoor

WPC is the ideal floor for outdoor. It is suitable for an external use and at weather changes (rain, sun, wind, etc). It is ideal for who doesn't want to give up the charm of decking, but desire an alternative to wood.

It is durable, ecologic, waterproof, resistant to wear, to salt, anti-slip, ideal to cover all the outdoor, it doesn't need any special maintenance and has a long life. It doesn't deform, it doesn't split, it doesn't board, it is unassailable by mold, insects, and it is resistant to UV rays.

Thanks to these characteristics, it is ideal to cover terraces, gardens, balcony, courtyards, patios, gazebos, platforms, pool-

side, piers, etc.

WPC (Wood Polymer Composite) is composed of 60% of wood fibers (HDPE), 30% of polyethylene and 10% of pigments, combined through special extrusion processes.

WPC has a double-face profile, which allows the lay down both on the smooth side and anti-slip side.

The installation is directly on the background, or on wood laths, with screws, nails or clips. WPC can be laid on every base (concrete, sand, gravel, grass) as long as it is stable and well-levelled, and an adequate slope is expected, so water can properly flow. The wood or aluminium laths can be fixed on the base or on support disks, adjustable in height, so that the flooring

will be well levelled and water funnels can be placed under it. To lay WPC decking on a grass base, it is necessary that the area is well levelled, and you must extend one or two layers of woven in polyester, to avoid the growth of the grass. Space between each listels must be minimum 3 mm, to guarantee the stability and to avoid a dangerous foot traffic. For the application is recommended to turn to a qualified and specialized staff.

The costs are cheaper than solid wood decking.

Considering that WPC flooring is highly resistant to the sun discoloration effects, it doesn't need to be particularly treated. You should just wash the floor with water and with a specific detergent.

Ancient Rome

ARTISTIC PARQUET IN SOLID WOOD



*"Parquet meets Art.
Expression, creation and tradition for wooden floor... unparalleled"*

Artistic Parquet is entirely in solid wood. It is the floor for excellence because it combines art with warmth and charm of wood. It is ideal to decor, to embellish, to enhance, to customize all the interiors, refined, exclusive and elegant.

The Artistic Parquet is made in solid wood tile, of several wooden species and, thanks to the wide range of colours, grains, finishes and shades, typical of wood, are able to satisfy all the aesthetical, personal and functional tastes. Both tiles and borders, with thickness starting from 14 mm, have two standard dimensions, but can be realized on customer request also in other dimensions and in every wooden species.

The lay down is with glue and you can add also frames, borders or borders in several dimensions and combinations of wooden

species in order to enrich the contours, the borders and the perimeters. The finishing can be in water, in oil, in wax and the varnish can be glossy, semi-glossy and matt.

For its charm, its elegance and for its geometries, the Artistic Parquet is recommended for large, elegant and prestigious spaces, such as villas, theatres, hotels and representative spaces.



The costs are high, considering that the working of one single tile or one border requires the use of fine wooden species and a precise labour, but the result is excellent.

The most important wooden species used are: Afzelia, Asian Teak, European Oak, Maple and Wengé.

For the ordinary cleaning it is recommended to use a vacuum cleaner or a cloth for dust and to delete stains use a microfiber cloth together with a specific detergent. For the extraordinary cleaning is recommended to use specific protective products, to give brightness and to protect the floor from the weather agents. The Artistic Parquet restoring for residential use can be done every 15-40 years, depending on the finishing.

Unvarnished Oak

2 AND 3 LAYERS PARQUET



“Unfinished Oak...ideal to make unique every interior”

Choosing an unfinished product, there is the possibility to determine the finishing.

To personalize and make an interior unique it will be necessary to choose, first of all, the dimensions you prefer between 2 and 3 Layers Parquet.

Then, according to your tastes, among the finishing available it is necessary

to choose the colour you prefer. The result will be unique, refined and elegant.

Oak, in fact, thanks to its clear colour, lends itself to a wide range of colour 7UV or Oil: 9 of The Classic Collection (7 UV), 15 of the Oak Season Collection and 5 of The Ecologic Line Collection (Oil).

The Unfinished Parquet lends itself to lay down in drawings, in geometric work, mosaic or herringbone.

The costs are variable, because they depend on the dimensions, on the kind of lay down and on the different finishing. In fact, in addition to the varnish it is possible to choose the working or treatment (dekape, planing, brushing).

“THE FINISHINGS...TO ADD VALUE AND CUSTOMIZE EVERY INTERIOR SPACE”

The Treatment is a kind of industrial finishing that can be applied on 3 Layers Unfinished Floating Parquet and/or 2 Layers Unfinished Parquet.

The varnish enhance the natural aspect of a wooden floor, protects and feeds the wood. The varnishing cycles, 100% Made in

Italy, Catas certified, respect the requirements expected for the European UNI 11622-1:2016 Standard.

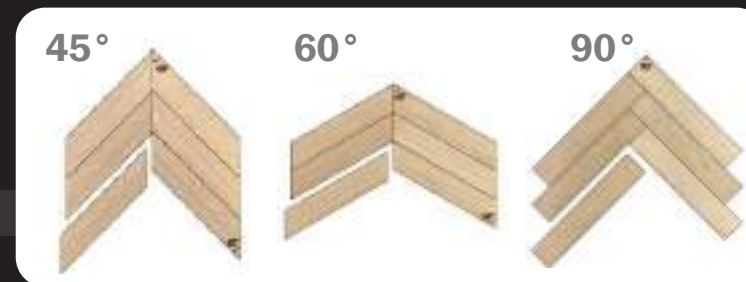
The Treatments can be done with varnish 7 UV Resistant or with Oil, both with natural varnish and colored varnish (the colored varnish can be applied only on European Oak).



The Herringbones parquet



45° - 60° - 90° CUT



"A different kind of lay down for Solid Wood Prefinished and Floating Parquet"

Among the different lay down, the most famous and the most used are, without any doubt, French Herringbone, Hungarian Herringbone and Italian Herringbone, which give elegance and refinement to the interiors.

The Herringbone Floorings 45°, known as "French Cut", is characterized by the 45° cut of the heads, which will be laid down head against head.

The Herringbone Floorings 60°, known as "Hungarian Cut", is characterized by the 60° cut of the heads, which will be laid down head against head.

The Herringbone Floorings 90°, known as "Italian Cut", is characterized by the perpendicular position of the slats. It means that they will be perpendicularly laid down, head in head, to form a 90° cut.

The Herringbone lay down can be parallel or diagonal respect to the wall and can be valued by matching frames, borders, in order to enrich the interiors.

The Herringbone cut can be realized on every wooden species and in several dimensions on Solid Wood, Prefinished and Floating Parquet.

The costs are variable, considering that the working are different depending on wood species, dimensions and finishing.

For the ordinary cleaning is recommended to use an Hoover, or antistatic clothes for dust to remove stains, with a specific detergent. For the extraordinary cleaning is recommended to use a specific protective product, to give brightness and to protect the wood from

the weather agents.

The Herringbone Parquet restoring, for residential use, can be done every 15-40 years, depending on the kind of Parquet and the kind of treatment.



Victy

LAMINATE FLOOR



“A cheap flooring, durable and with many aesthetic varieties”

Laminated Floor is composed by one layer of wooden fibers, high temperature pressed and fixed by high quality resin, on which is applied a thin printed plastic surface, highly sophisticated, which reproduce the veining and colours of the wood, with a protective varnish (melaminic resin), which makes it waterproof and resistant to scratches and bumps.

The laminated flooring is composed of wood for 90% and other materials for the rest, assembled with high temperature and they are sold in listonies. It is elegant, comfortable, resistant to wear and abrasion.

The most common have thickness from 7 to 10 mm, but you can find also 12 mm.

The click system laying is floating, directly on the screeds or the previous floor. The elements are taped to each other

thanks to the tongue and groove. It is necessary to be sure, before the laying, that there is no humidity in the room.

It is necessary to leave along the perimeter a space of about 8 mm, to allow the laminated floating, that is expanding to the climate changes.

The application of the Laminate Floor is easy and fast and allow the lay “do it by yourself”, even if is recommended to ask to do the work to specialized staff. You can't neglect the choice of the underfloor. To isolate and avoid inconveniences create by the humidity, it is necessary to use sound-absorbing or steam barrier mats.

Considering that it is a floating floor, also the finishes are important, that is baseboards, profiles, dilation joints, coordinated with the Laminate Floor chosen.

The hardness of a Laminate Floor is divided in domestic use with 3 classes (AC1, AC2, AC3) and commercial use with 4 classes (AC3, AC4, AC5, AC6).

The more hardness growth, the more the prices growth.

The price is also influenced by the thickness. 6-7 mm of thickness is an economic price product, 8-9 mm is a medium price product, 10 mm is a high price product.

For a good maintenance, we suggest removing dust with a Hoover or an antistatic rag and wash the floor with a damp but very wrung out soft rag, using water and a non-foamy neutral cleanser.

The life of a Laminat Floor is about 20 years. The hardness is always related to the destination of use.

Recycled Wood

SPC FLOOR (STONE POLYMER COMPOSITE)



“SPC... the alternative flooring, cheap and extremely resistant”

It is a luxurious vinyl floor, composed by an upper layer (surface area) a layer of wear, a decorative layer in HD, which reproduce veining and colours of the wood, SPC core and only for 5.5 mm thickness EVA mats, joint together with a static pres.

It is cheap, sound absorbing, anti-slip, antibacterial, antistatic, long-lasting, water and humidity resistant, isolating, moreover it is easy to lay and to maintain it. It is ideal for the installation on heated floors.

The material has thickness of 4 or 5,5 mm and can be laid also on pre-existing floors, if stable, well levelled and dry. In fact, despite being insensitive to

dampness, it is appropriate for it to be checked, to avoid fungi or mold forming underground. The material has EVA mats (Ethylene Vinyl Acetate) integrated and pre-glued of 1,5 mm of thickness, for termic and acustic absorbing.

The installation is only floating and click system. It is ideal for the lay “do it by yourself”, even if it is recommended to ask to specialized staff.

For a good maintenance we suggest removing dust with a Hoover or antistatic rag and wash the floor with a damp but very wrung soft rag, using water and cleanser suitable for vinyl floors, avoiding solvents, ammonia or abrasive and corrosive products.



Skirting boards

FURNISHING COMPLEMENTS

"The furnishing accessories for a perfect wooden floor"

The Skirting Boards add an important and elegant finish touch and style to every wooden flooring. They're available in different wood species, different dimensions and different types.

The Skirting Boards carry out important roles: juncture (to cover the irregular side, that inevitably arise between the flooring and the wall), protective (to protect the wall from limes and abrasion; moreover it impedes the furniture to directly touch the wall), and decorative (a complementary decoration to the fixture).

The installation is nailed down and/or glued.



Steps

FURNISHING COMPLEMENTS

"A furnishing complement which makes exclusive a additional storey"

Steps are a complement unique and exclusive, perfect to complete a room with stairway or raising part, already furnished with a wood flooring or not. They can be realized with Solid Wood or 2 Layers Prefinished Parquet in the following wood species: Afzelia, Iroko, European Oak, Asian Teak and Wengé.

They are ideal to cover or enhance a raising or a multi-floor house stairway, loft apartments and attic flats.

They are ideal to cover or enhance a raising or a multi-floor house stairway, loft apartments and attic flats.

They can realized in four different types: Tread only - Tread and Riser - Tread, Riser and Bullnose finish (a special rounded profile) - Triangular. They can also be made at the request in other sizes and customized on request (shaped, squared, rounded, smoothed, varnished).





Finishing aside, wood floorings can be exposed to particular treatments or specific manufacturings to obtain particular aesthetic effects and to customize the space. Some of these treatments are: white dekape, whitening, brushing, planing, bevelling, serration, thermo-treatment.



Our services

White Dekape: is a treatment usually used on Oak. It consists in obtaining some white veinings. It is possible when scratching the listonies already varnished, then varnishing or oiling them again.

Whitening: is a treatment usually used on Oak. It consists in painting the listonies with white varnish or oil. Depending on the quantity of the varnish or oil used, it's possible to obtain different shade of white.

Brushing: is a manufacturing used to make the surface of the wooden floorings rustical and rough to the touch. It's possible to obtain it through rotating brush.

Planing: is a manufacturing used to make the surface of the wooden floorings like they were ancient and old. It's possible to obtain it through specific plane. It consists in making the upper layer irregular and full of imperfections, to give the effect of a lived and old space.

Bevelling: is a manufacturing, usually used on medium or big listonies, it can be carry out laterally or frontally, it gives durability and solidity to the wooden floorings.

Serration: is a manufacturing used to obtain a wooden flooring "vintage" effect. It's possible to obtain it literally serrating irregularly and horizontally in relation to the wood fiber.

*Please note: Pickling and Bleaching only and exclusively for Oak.
Planing and serration only for medium-sized (planks)
or large (maxiplance) boards with a minimum width of 120 mm.
Brushing can be medium or deep.*





Some of our realizations



QUALITYWOOD® has been assessed and certified as meeting the requirement of the Group COC certification by INTERFACE NRM LTD.

FSC certificate No.:

INT-COC-001611

License No.:

FSC-C164660

WE HEREBY CERTIFY THAT THE CHAIN OF CUSTODY OPERATED BY

STEMAU SRL - Via Pieve Ligure, 15 00168 ROMA

IS IN COMPLIANCE WITH FSC-STD-40-004 V3 STANDARD FOR COC CERTIFICATION. STEMAU SRL IS A MEMBER OF QUALITYWOOD GROUP, WITH SUB CODE "O"

THIS CERTIFICATE IS VALID FOR THE FOLLOWING PROCESSING and PRODUCTS:
Solid and laminated wood floors, skirting boards

DATE OF INCLUSION IN THE MULTISITE CERTIFICATE:

25.02.2021

EXPIRING ON (*):

24.02.2026

(* Link to the FSC Database: <https://info.fsc.org/details.php?id=a024y0000m54rYAAQ&type=certificate>



The mark of responsible forestry
FSC® C164660



Alessandro Copelli - Chief Executive Officer




Registro Eccellenze Italiane



Certificato di Iscrizione N. 6141





Stemau Srl

ID Anticontraffazione N. 6141 Azienda di Eccellenze Italiane

Editorial board



Chief officer





Eccellenze Italiane.com®

2024





The **CATAS QUALITY AWARD** certification guarantees the compliance of the product with technical requisite, through biological and mechanical test and chemical security analysis. Indeed, CATAS is the most prestigious Italian research institute in the field of wood.

Each wood flooring realized by **Stemau S.r.l.** undergoes Catas tests, it attests the quality and conformity certification.

CATAS certified collections: Eternity, Tecnic, Biggest, Vicky.



ISTITUTO PER LA TUTELA DEI PRODUTTORI ITALIANI

Made in Italy 100% Certificate

REGISTRAZIONE N° IT01.IT/366.069.M

SI ATTESTA CHE
This is to certify that

STEMAU

E' UN MARCHIO CERTIFICATO AVENTE I REQUISITI DEL SISTEMA IT01 - 100% QUALITA' ORIGINALE ITALIANA acts according to system IT01 - 100% Original Italian Quality

QUESTA CERTIFICAZIONE E' INOLTRE VALIDA PER IL SEGUENTE CAMPO APPLICATIVO:
This certificate is also valid for the following product or service range:

PAVIMENTI IN LEGNO
Wooden Floors

DITTA PRODUTTRICE E DISTRIBUZIONE
Manufacturer and Distribution Company

STEMAU SRL
Via Refrancore 26 - 00166 Roma - RM

SISTEMA IT01 - 100% QUALITA' ORIGINALE ITALIANA
The certified Company:

Questi prodotti sono:

A - IDEATI E FABBRICATI INTERAMENTE IN ITALIA
A.1 - Realizzati con disegni e progettazione esclusivi dell' Azienda
A.2 - Costruiti interamente in Italia
A.3 - Realizzati con semilavorati Italiani
A.4 - Con tracciabilità delle lavorazioni
B - COSTRUITI CON MATERIALI NATURALI DI QUALITÀ
B.1 - Materiali naturali individuali o composti
B.2 - Materiali di qualità e prima scelta per l'uso previsto
B.3 - Con tracciabilità della provenienza delle materie prime
C - COSTRUITI SU LAVORAZIONI TRADIZIONALI TIPICHE
C.1 - Particolari lavorazioni aziendali
C.2 - Utilizzo di tecniche tradizionali tipiche
D - REALIZZATI NEL RISPETTO DEL LAVORO IGIENE E SICUREZZA
D.1 - Realizzati nel pieno rispetto del lavoro
D.2 - A norma igiene sanità e sicurezza su luoghi e prodotti

Products must be:

A. - DESIGNED AND MANUFACTURED ENTIRELY IN ITALY
A.1 - Based on company's own project and design.
A.2 - Fully manufactured in Italy
A.3 - Made with Italian Components
A.4 - Complete work traceability in Italy
B - MADE WITH QUALITY NATURAL MATERIALS
B.1 - Natural materials or Natural compounds
B.2 - Quality, first choice materials
B.3 - Raw materials's origin Full traceability
C - BUILT ACCORDING TO TRADITIONAL WORKING METHODS
C.1 - Use of the company's specific Workmanship
C.2 - Use of traditional Workmanships techniques
D - MADE IN OBSERVANCE OF EMPLOYEES, HEALTH AND SAFETY STANDARDS
D.1 - Ethical treatment of Employees
D.2 - Manufactured according to the Hygiene, Healthcare and Safety regulations

Organismo Asseverante:
Supporting unit:
PROMINDUSTRIA SPA



Stamp / Trade Mark
Timbro dell'Istituto



PASQUALE DE ANGELIS
Vice President



NAZZARENO VITA
Director

MILANO, 31/07/2023

LA VALIDITA' DEL PRESENTE CERTIFICATO MADE IN ITALY E' SUBORDINATA AL RIESAME COMPLETO DEL SISTEMA CON PERIODICITA' ANNUALE
The validity of this Made in Italy Certificate is subjected to a periodical complete annual inspection





Legal Head Office and Showroom - Via Pieve Ligure, 15 - 00168 Rome (RM) Italy
Warehouse e Showroom - Via Refrancore, 26 - 00166 Rome (RM) Italy
Factory - Via Morsasco, 41 - 00166 Rome (RM) Italy

www.stemausrl.it info@stemausrl.it Phone 0039 06 45502260

[facebook.com/stemausrlparquet/](https://www.facebook.com/stemausrlparquet/) [Instagram.com/stemau_parquet/](https://www.instagram.com/stemau_parquet/)