



SCHOOL FURNITURE 2022

MADE IN ITALY













vastarredo
INNOVATIVE LEARNING FURNITURE

FURNITURE
2022



10 GOOD REASONS TO CHOOSE
OUR FURNITURE

- 01  CLEANING
- 02  MAINTENANCE
- 03  DURABILITY
- 04  SUSTAINABLE
- 05  ACOUSTIC COMFORT
- 06  RESPONSABILITY
- 07  CUSTOMIZATION
- 08  RECYCLABLE
- 09  MULTIFUNCTIONALITY
- 10  GESTION

CLASSROOM LAYOUTS

- AGORA SEATING SOFA 21
- DEBATING MODULE 31
- CORRIDORS AND HALLS 37
- TABLES 56
- CHAIR 63
- WRITING SURFACES 64
- PARTITION BOARDS 66
- CURVED CABINETS 74
- CABINETS H 100 82
- CABINETS H 150 86
- CABINETS H 200 92
- CABINET WITH DRAWERS 99
- MINILAB MODULE 101



LEARNING ENVIRONMENT



12 meters

12 meters

INSPIRING SPACES



The classrooms are equipped with functional furniture to store learning materials in the student's workplaces. Different areas dedicated to different subjects inside well-organised learning spaces allow students from one classroom to engage in different activities at the same time.



LEARNING SPACES



Learning spaces refers to the different locations, contexts, and environments in which students learn. today the students can learn in a huge variety of environments. learning spaces is often used as an alternative to standard classroom, which has more limited and traditional meanings.

The term also includes the culture of a school or class as well as the ways in which teachers may organize an educational context to facilitate learning



COMPUTER CLASSROOM



A well designed and organised environment is necessary to develop a classroom that promote a sense of comfort and invite exploration and engagement.

CLASSROOM ORGANIZATION AND STORAGE



Open or closed shelves (high or low) save a lot of space in the classroom, and keeps your classrooms tidy, clean and well organized.

ACTIVE AND COLLABORATIVE LEARNING



MINILAB RESEARCHING AREA



The Minilab Workstation with privacy panel responds to the need to create a well-identified and separate work corner, already equipped with a table and shelves.

The side panels provide the right level of privacy, while the sliding table offers two workstations. The Minilab Workstation can be used in the classroom and in the connecting spaces.





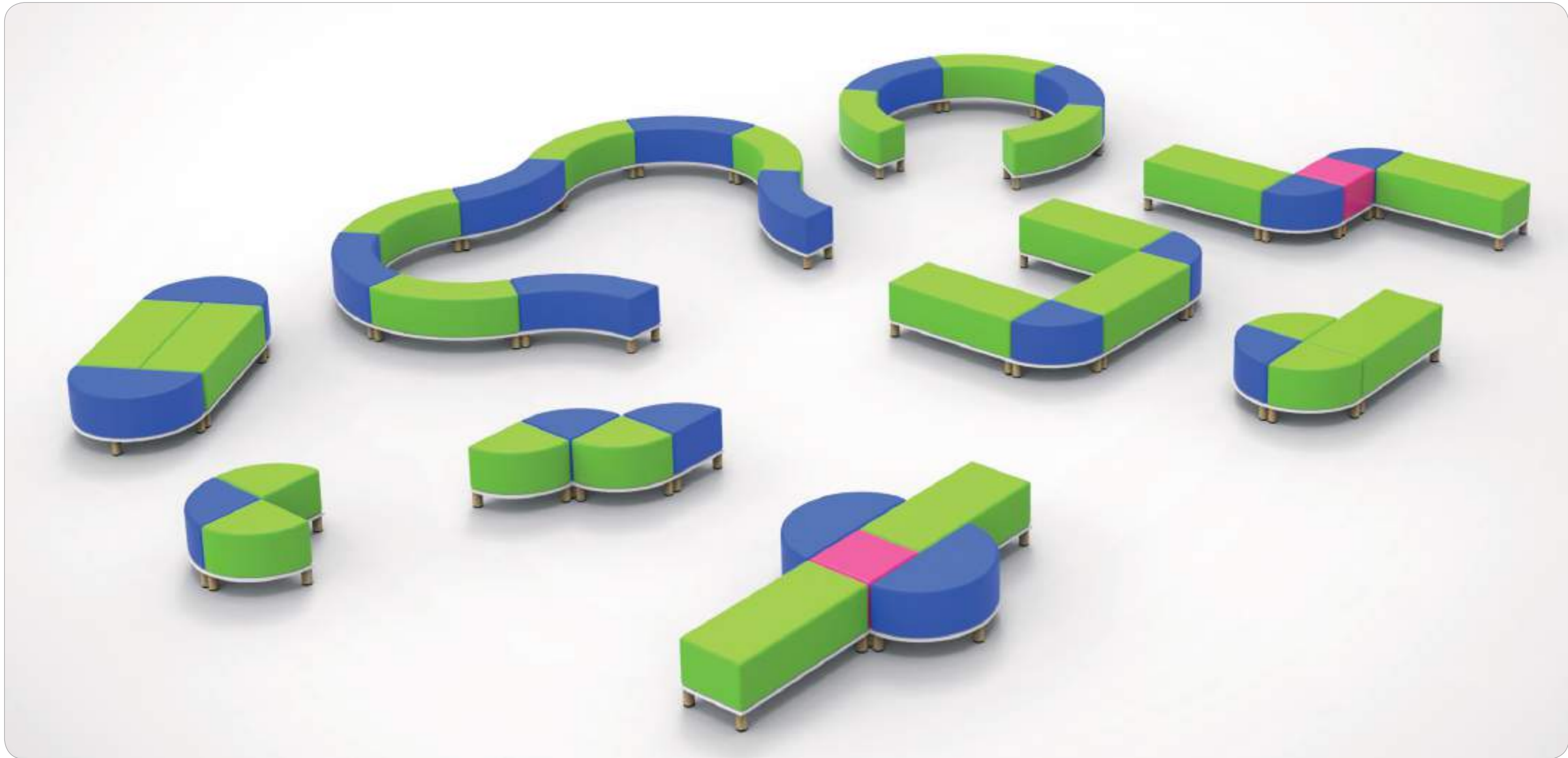
AGORA



The Agora system offers numerous set of modular and stackable elements that allow teachers to create diverse solutions by combining wooden modules and soft seats.

The parallelepiped modules can always be joined together, allowing you to design and characterize the classroom in accordance with the available spaces.

AGORA SEATING SOFA



AGORA SEATING SOFA

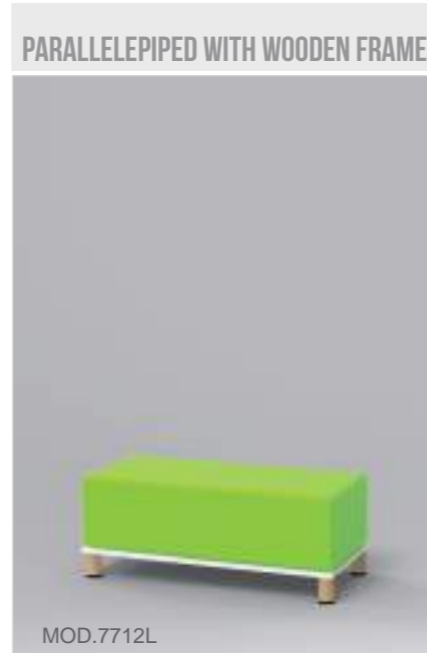
SEATING SOFA ACCESSORIES



■ CUBE WITH WOODEN FRAME
■ DIMENSIONS: 44x44x40h.



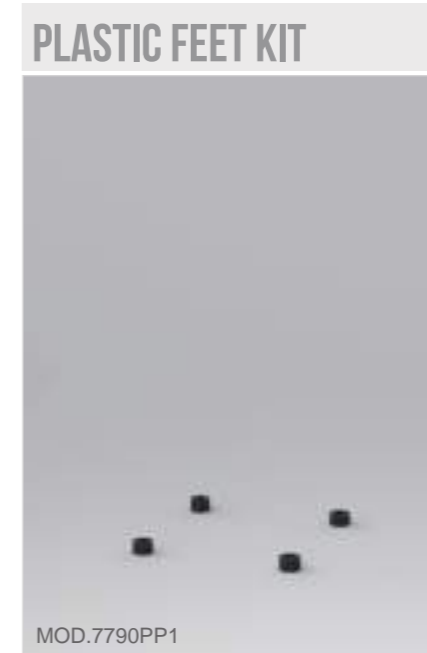
■ ANGLE WITH WOODEN FRAME
■ DIMENSIONS: 44x44x40h.



■ PARALLELEPIPED WITH WOODEN FRAME
■ DIMENSIONS: 104x44x40h.



■ N. 4 ROUND WOODEN FEET



■ N. 4 ROUND PLASTIC FEET



■ N. 4 CASTORS



■ ARCH WITH WOODEN FRAME
■ DIMENSIONS: 104x44x40h.

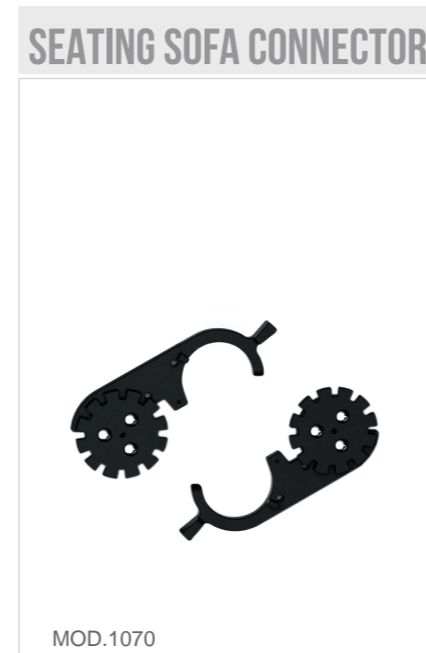


■ SEMI CIRCLE WITH WOODEN FRAME
■ DIMENSIONS: 88x44x40h.

WOODEN FRAME COLOUR



SOFA COLOURS



■ COUPLE OF PLASTIC CONNECTORS





COLLABORATIVE LEARNING AREA



Cooperative learning is a pedagogical practice that promotes socialization among the students.

It involves students working together in group to achieve common results that they would be unable to complete by themselves.

ARCHED SEATING SOFAS



■ POSSIBLE COMBINATIONS

ARCHED SEATING SOFAS

QUADRO SEATING SOFAS

BIG ARCHED SOFA

MOD.7733A

- BIG ARCHED SOFA
- MOD. 7733AL OVERALL DIMENSIONS: 206x40x90h.
- MOD. 7733AM OVERALL DIMENSIONS: 206x40x60h.
- MOD. 7733AS OVERALL DIMENSIONS: 206x40x30h.

MEDIUM ARCHED SOFA

MOD.7732A

- MEDIUM ARCHED SOFA
- MOD. 7732AL OVERALL DIMENSIONS: 150x40x90h.
- MOD. 7732AM OVERALL DIMENSIONS: 150x40x60h.
- MOD. 7732AS OVERALL DIMENSIONS: 150x40x30h.

SMALL ARCHED SOFA

MOD.7731A

- SMALL ARCHED SOFA
- MOD. 7731AL OVERALL DIMENSIONS: 93x40x90h.
- MOD. 7731AM OVERALL DIMENSIONS: 93x40x60h.
- MOD. 7731AS OVERALL DIMENSIONS: 93x40x30h.

SQUARE SOFA H60

MOD.7735AL

- SQUARE SOFA H60
- DIMENSIONS: 80x80x60h.

SQUARE SOFA H40

MOD.7735AM

- SQUARE SOFA H40
- DIMENSIONS: 80x80x40h.

SQUARE SOFA H20

MOD.7735AS

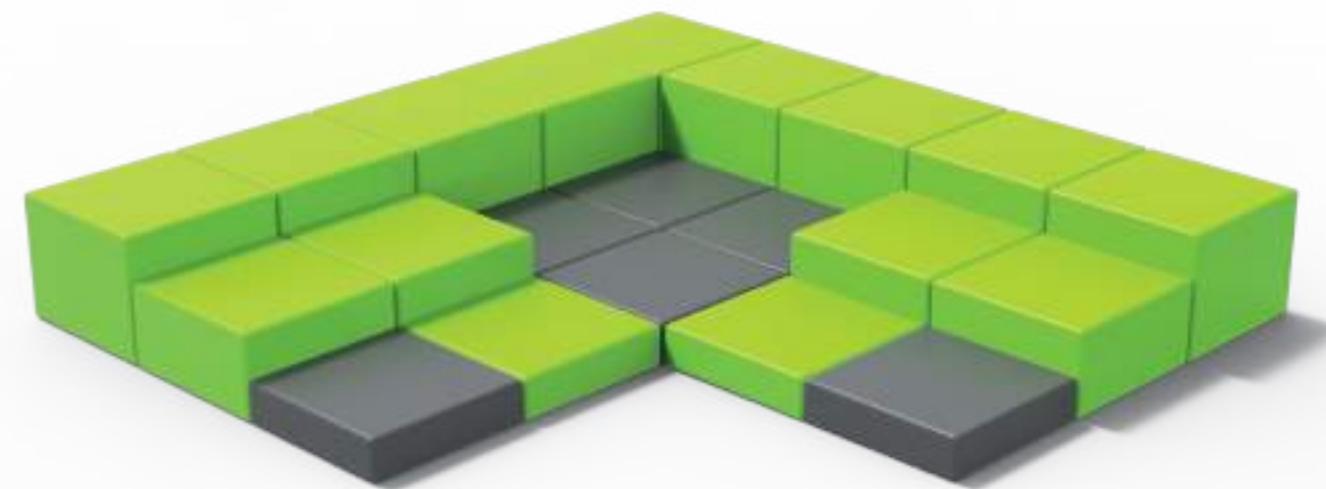
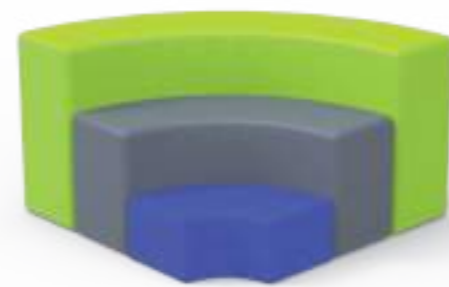
- SQUARE SOFA H20
- DIMENSIONS: 80x80x20h.

PARALLELEPIPED SOFA

MOD.7737A

- PARALLELEPIPED SOFA
- MOD. 7737AL OVERALL DIMENSIONS: 150x40x90h.
- MOD. 7737AM OVERALL DIMENSIONS: 150x40x60h.
- MOD. 7737AS OVERALL DIMENSIONS: 150x40x30h.

SOFA COLOURS





DEBATING MODULE



The halls becomes a space for discussions and presentations thanks to the modularity of the debating modules with wheels that allow teachers to reconfigure the spaces according to the educational needs of the moment.

DEBATING MODULE





DEBATING MODULE



■ STEPS MODULE
■ DIMENSIONS: 104x88x77h.



■ COUPLE OF DRAWERS FOR DEBATING MODULE

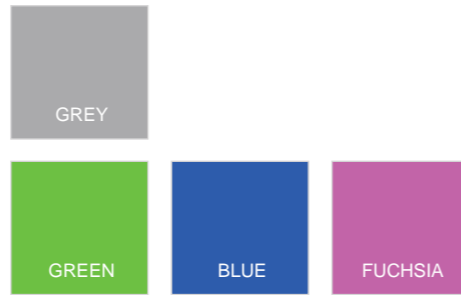


■ WALL PANEL FOR DEBATING MODULE
■ MOD.7690A10 ■ DIMENSIONS: 104x2x100h.
■ MOD.7690A15 ■ DIMENSIONS: 104x2x150h.
■ MOD.7690A20 ■ DIMENSIONS: 104x2x200h.

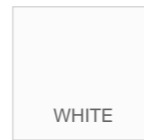


■ STANDING DESK
■ DIMENSIONS: 50x60x120h.

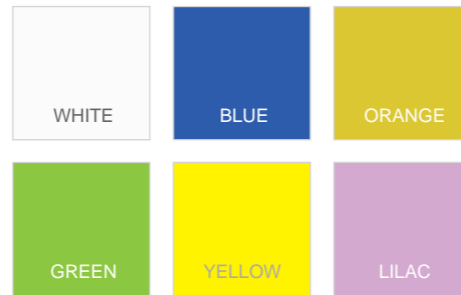
PILLOW COLOURS FOR SEATING MODULES



DEBATING MODULE COLOURS



FRONT PLATE DRAWER COLOURS



CORRIDORS AND HALLS



Corridors and halls may be used to meet parents, to revise the lesson, to read in group...

TEACHERS ROOM



Teachers room well designed and organised where to store personal effects.



CUBE BOOKCASE / LABORATORY AREA



The cube bookcases are a good solution for creating working corners inside classroom especially in small spaces.

If a larger space is available, the swivelling tables equipped with storage on wheels allows teachers to organise customised and flexible solutions.

Laboratory area where to experiment, increase, develop the students learning.

CUBE FOR INTERACTIVE CLASSROOM 1



CUBE FOR INTERACTIVE CLASSROOM 2





MADE IN ITALY



VERTICAL CUBES 30

HORIZONTAL CUBES 30

CUBE 1 MODULE VERT.

MOD.7411GP

■ CUBE 1 MODULE VERTICAL
■ DIMENSIONS: 41x30x44h.

CUBE 2 MODULE VERT.

MOD.7412GP

■ CUBE 2 MODULE VERTICAL
■ DIMENSIONS: 41x30x82h.

CUBE 3 MODULE VERT.

MOD.7413GP

■ CUBE 3 MODULE VERTICAL
■ DIMENSIONS: 41x30x122h.

CUBE 2 MODULE HORIZ.

MOD.7421GP

■ CUBE 2 MODULE HORIZONTAL
■ DIMENSIONS: 80x30x44h.

CUBE 3 MODULE HORIZ.

MOD.7431GP

■ CUBE 3 MODULE HORIZONTAL
■ DIMENSIONS: 120x30x44h.

CUBE 4 MODULE HORIZ.

MOD.7441GP

■ CUBE 4 MODULE HORIZONTAL
■ DIMENSIONS: 159x30x44h.

CUBE 4 MODULE VERT.

MOD.7414GP

■ CUBE 4 MODULE VERTICAL
■ DIMENSIONS: 41x30x161h.

CUBE 5 MODULE VERT.

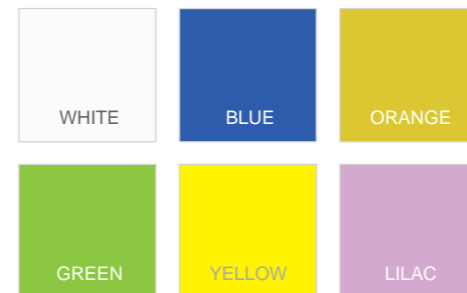
MOD.7415GP

■ CUBE 5 MODULE VERTICAL
■ DIMENSIONS: 41x30x200h.

MODULE COLOURS



BACK PANEL COLOUR



CUBE 2x2 MODULE HORIZ.

MOD.7422GP

■ CUBE 2x2 MODULE HORIZONTAL
■ DIMENSIONS: 80x30x82h.

CUBE 3x2 MODULE HORIZ.

MOD.7432GP

■ CUBE 3x2 MODULE HORIZONTAL
■ DIMENSIONS: 120x30x82h.

CUBE 4x2 MODULE HORIZ.

MOD.7442GP

■ CUBE 4x2 MODULE HORIZONTAL
■ DIMENSIONS: 159x30x82h.

WALL CUBE STORAGE 30

VERTICAL CUBES 30 WITH DOORS



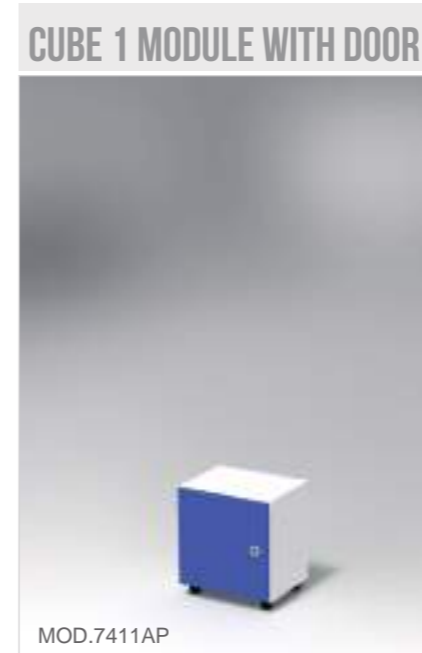
■ WALL CUBE 2 MODULES
■ DIMENSIONS: 80x30x41h.



■ WALL CUBE 3 MODULES
■ DIMENSIONS: 120x30x41h.



■ WALL CUBE 4 MODULES
■ DIMENSIONS: 159x30x41h.



■ CUBE 1 MODULE WITH DOOR
■ DIMENSIONS: 41x32x44h.



■ CUBE 2 MODULES WITH DOORS
■ DIMENSIONS: 41x32x82h.



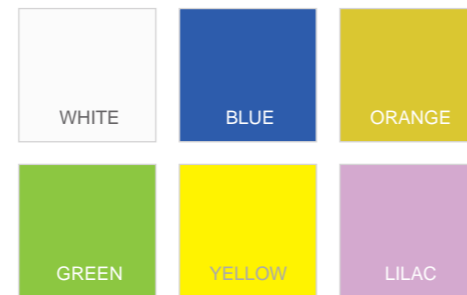
■ CUBE 3 MODULES WITH DOORS
■ DIMENSIONS: 41x32x122h.



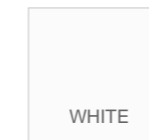
MODULE COLOURS



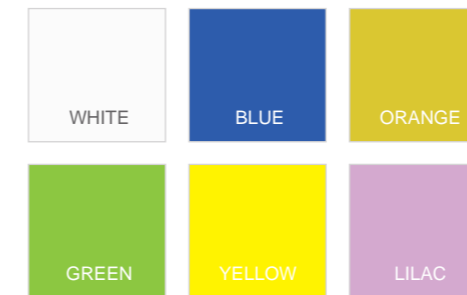
BACK PANEL COLOUR



MODULE COLOURS



SHELVES COLOURS



■ CUBE 4 MODULES WITH DOORS
■ DIMENSIONS: 41x32x161h.



■ CUBE 5 MODULES WITH DOORS
■ DIMENSIONS: 41x32x200h.

HORIZONTAL CUBES 30 WITH DOORS



■ CUBE 2 HORIZONTAL MODULES WITH DOORS
■ DIMENSIONS: 80x32x44h.



■ CUBE 3 HORIZONTAL MODULES WITH DOORS
■ DIMENSIONS: 120x32x44h.



■ CUBE 4 HORIZONTAL MODULES WITH DOORS
■ DIMENSIONS: 159x32x44h.



■ CUBE 2x2 HORIZONTAL MODULES WITH DOORS
■ DIMENSIONS: 80x32x82h.



■ CUBE 3x2 HORIZONTAL MODULES WITH DOORS
■ DIMENSIONS: 120x32x82h.



■ CUBE 4x2 HORIZONTAL MODULES WITH DOORS
■ DIMENSIONS: 159x32x82h.



■ LOCK ON DEMAND



■ ADHESIVE NUMBERS FOR DOORS

SOFT SEATING FOR HORIZONTAL UNITS



■ SOFT SEATING FOR CUBES 2 HORIZONTAL
■ DIMENSIONS: 78x30x4h.



■ SOFT SEATING FOR CUBES 3 HORIZONTAL
■ DIMENSIONS: 117x30x4h.

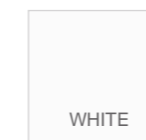


■ SOFT SEATING FOR CUBES 4 HORIZONTAL
■ DIMENSIONS: 155x30x4h.

MODULE COLOURS



SHELVES COLOURS



PILLOW COLOURS FOR SEATING





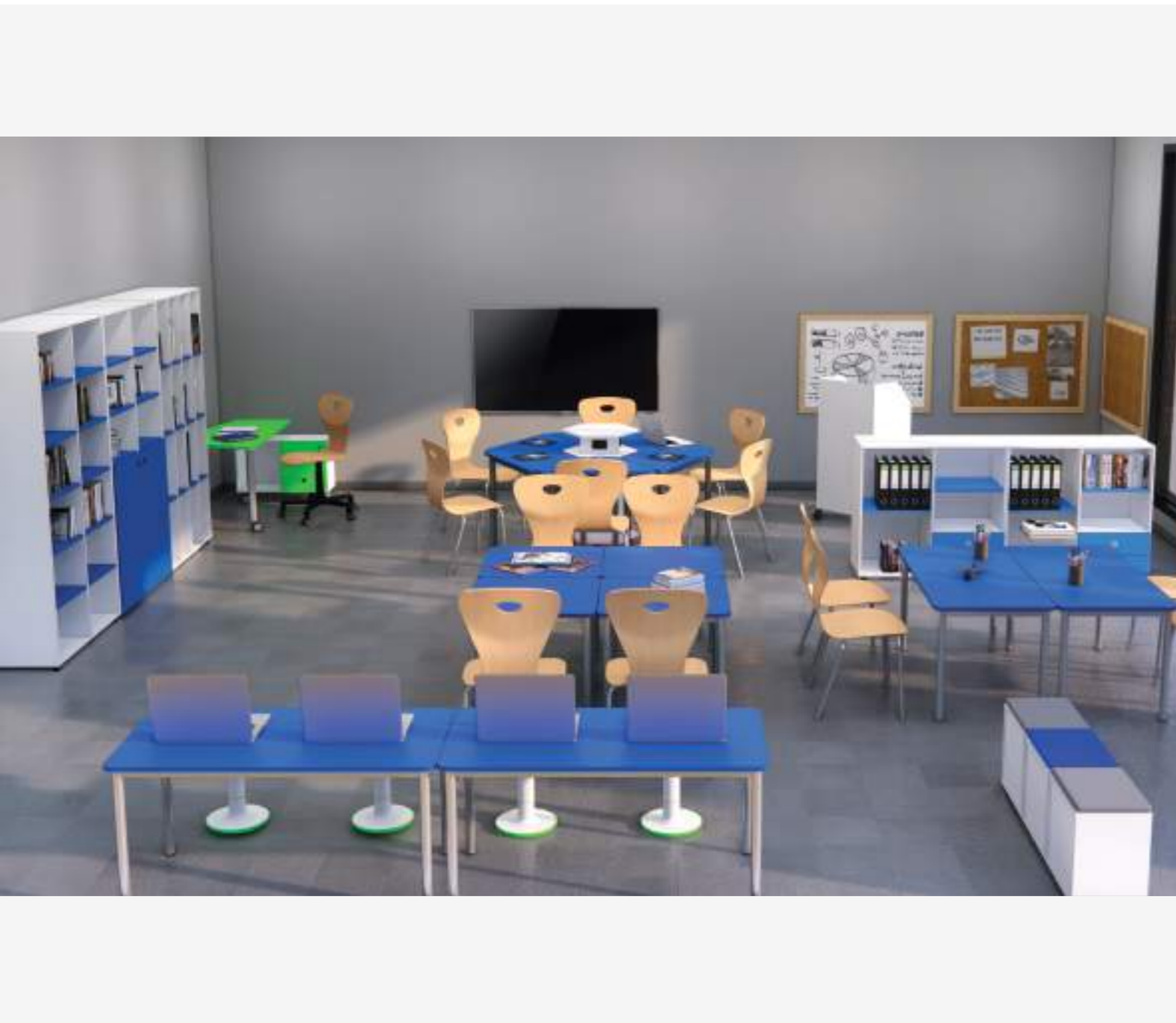
WORK STATION



The students always took the leading role.

Work islands composed according to criteria well established by the teacher functional to the activities and group dynamics.

WORK STATION LAYOUT



8 meters

8 meters

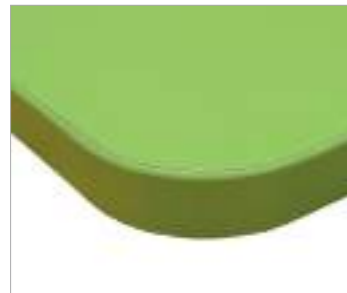


EN 1729-1 TABLE HEIGHTS

SIZE 0	SIZE 1	SIZE 2	SIZE 3	SIZE 4	SIZE 5	SIZE 6	SIZE 7
H=43	H=46	H=53	H=59	H=64	H=71	H=76	H=82

TABLES CERTIFIED ACCORDING TO EN 1729 1-2

TABLE TOPS



■ MELAMINE 25MM THICKNESS ABS EDGES R44MM



■ MELAMINE 25MM THICKNESS ABS EDGES R2MM

TABLE TOP COLOURS



TABLE TOPS



■ Top made of conglomerate wood laminated 20mm solid wood edges

TABLE TOP COLOURS



OPTIONAL FOR TABLES:
 MOD.1131 | MOD.1133 | MOD.1143 | MOD.1145
 MOD.1132 | MOD.1136 | MOD.1144 | MOD.1710

SQUARE TABLE



■ **SQUARE TABLE**
 Round tubular diam. 40mm solid wood edges
 ■ MOD. 1131 DIMENSIONS: 65x65 cm.
 ■ MOD. 1132 DIMENSIONS: 70x70 cm.
 Round tubular diam. 60mm melamine 25mm thick. r2mm
 ■ MOD. 1710 DIMENSIONS: 80x80 cm.
 ■ MOD. 1711 DIMENSIONS: 100x100 cm.
 ■ MOD. 1712 DIMENSIONS: 130x130 cm.

AVAILABLE HEIGHTS:
 30 / 43 / 46 / 53 / 59 / 64 / 71 / 76 / 82H. cm.

TRIANGULAR TABLE



■ **TRIANGULAR TABLE**
 Round tubular diam. 60mm melamine 25mm thick. r44mm
 ■ MOD. 1775 DIMENSIONS: 80x80 cm.
 ■ MOD. 1776 DIMENSIONS: 90x90 cm.
 ■ MOD. 1777 DIMENSIONS: 100x100 cm.

AVAILABLE HEIGHTS:
 30 / 43 / 46 / 53 / 59 / 64 / 71 / 76 / 82H. cm.

RECTANGULAR TABLE



■ **RECTANGULAR TABLE**
 Round tubular diam. 40mm solid wood edges
 ■ MOD. 1143 DIMENSIONS: 70x50 cm.
 ■ MOD. 1144 DIMENSIONS: 130x50 cm.
 ■ MOD. 1136 DIMENSIONS: 130x65 cm.
 ■ MOD. 1133 DIMENSIONS: 140x70 cm.
 Round tubular diam. 60mm melamine 25mm thick. r2mm
 ■ MOD. 1717 DIMENSIONS: 120x80 cm.
 ■ MOD. 1714 DIMENSIONS: 140x80 cm.
 ■ MOD. 1716 DIMENSIONS: 160x80 cm.
 ■ MOD. 1718 DIMENSIONS: 180x80 cm.

AVAILABLE HEIGHTS:
 30 / 43 / 46 / 53 / 59 / 64 / 71 / 76 / 82H. cm.

MEZZO ARCO TABLE



■ **MEZZO ARCO TABLE**
 Round tubular diam. 60mm melamine 25mm thick. r44mm
 ■ MOD. 1755 DIMENSIONS: 72x52 cm.

AVAILABLE HEIGHTS:
 30 / 43 / 46 / 53 / 59 / 64 / 71 / 76 / 82H. cm.

SPICCHIO TABLE

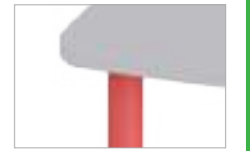


■ **SPICCHIO TABLE**
 Round tubular diam. 60mm melamine 25mm thick. r44mm
 ■ MOD. 1750 DIMENSIONS: Ø80 cm.
 ■ MOD. 1751 DIMENSIONS: Ø100 cm.

AVAILABLE HEIGHTS:
 30 / 43 / 46 / 53 / 59 / 64 / 71 / 76 / 82H. cm.



ALUMINIUM - RAL 9006



RED - RAL 3001



BLU - RAL 5015



GREEN - RAL 6024



BLACK - RAL 9005



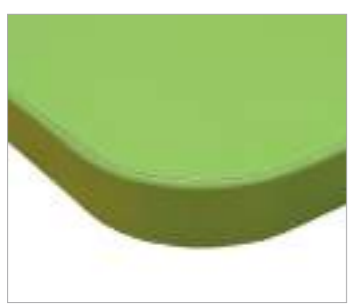
SOLID WOOD LEGS

STRUCTURE COLOURS



TABLES CERTIFIED ACCORDING TO EN 1729 1-2

TABLE TOPS



MELAMINE 25MM THICKNESS ABS EDGES R44MM



MELAMINE 25MM THICKNESS ABS EDGES R2MM

TABLE TOP COLOURS



BOOKSHELF FOR TABLE

GRID BOOKSHELF



MOD.1099

■ GRID BOOKSHELF

METALLIC BOOKSHELF



MOD.1082

■ METALLIC BOOKSHELF

PLASTIC BOOKSHELF



MOD.1085

■ PLASTIC BOOKSHELF

PLASTIC BOOKSHELF



MOD.1089

■ PLASTIC DRAWERS ON GUIDE

TRAPEZOIDAL TABLE



■ TRAPEZOIDAL TABLE
 Round tubular diam. 40mm melamine 25mm thick. r44mm
 ■ MOD. 1741 DIMENSIONS: 85x53 cm.
 ■ MOD. 1766 DIMENSIONS: 100x56 cm.
 Round tubular diam. 60mm melamine 25mm thick. r44mm
 ■ MOD. 1705 DIMENSIONS: 130x61 cm.
 ■ MOD. 1707 DIMENSIONS: 140x64 cm.
 ■ MOD. 1709 DIMENSIONS: 160x74 cm.

AVAILABLE HEIGHTS:
 30 / 43 / 46 / 53 / 59 / 64 / 71 / 76 / 82H. cm.

ARCO TABLE



■ ARCO TABLE
 Round tubular diam. 60mm melamine 25mm thick. r44mm
 ■ MOD. 1742 DIMENSIONS: 126x61 cm.

AVAILABLE HEIGHTS:
 30 / 43 / 46 / 53 / 59 / 64 / 71 / 76 / 82H. cm.

CIRCULAR TABLE



■ CIRCULAR TABLE
 Round tubular diam. 60mm melamine 25mm thick. r2mm
 ■ MOD. 1942 DIMENSIONS: Ø100 cm.
 ■ MOD. 1939 DIMENSIONS: Ø130 cm.

AVAILABLE HEIGHTS:
 30 / 43 / 46 / 53 / 59 / 64 / 71 / 76 / 82H. cm.

HALF CIRCLE TABLE



■ HALF CIRCLE TABLE
 Round tubular diam. 60mm melamine 25mm thick. r44mm
 ■ MOD. 1941 DIMENSIONS: Ø100 cm.
 ■ MOD. 1937 DIMENSIONS: Ø130 cm.
 ■ MOD. 1947 DIMENSIONS: Ø160 cm.

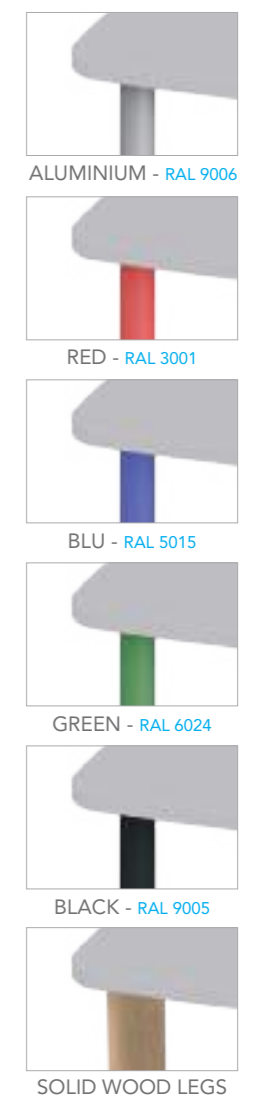
AVAILABLE HEIGHTS:
 30 / 43 / 46 / 53 / 59 / 64 / 71 / 76 / 82H. cm.

TETRAGON TABLE



■ TETRAGON TABLE
 Round tubular diam. 60mm melamine 25mm thick. r44mm
 ■ MOD. 1770 DIMENSIONS: 72x67 cm.

AVAILABLE HEIGHTS:
 30 / 43 / 46 / 53 / 59 / 64 / 71 / 76 / 82H. cm.



STRUCTURE COLOURS



MADE IN ITALY



TABLE

ACCESSORY FOR TABLES

WORKING SQUARE TABLE

MOD.7135AR

■ WORKING SQUARE TABLE
■ DIMENSIONS: 100x100x80h.

WORKING ROUND TABLE

MOD.7145AR

■ WORKING ROUND TABLE
■ DIMENSIONS: diam.100x80h.

TABLE

■ TABLE
■ MOD. 7110 DIMENSIONS: 140x71
■ MOD. 7111 DIMENSIONS: 160x71
AVAILABLE HEIGHTS:
46 / 53 / 59 / 64 / 71 / 76 / 82H. cm.

TABLE WITH DRAWERS

MOD.7130A1LR
MOD.7132A1LR

■ TABLE WITH DRAWERS
■ DIMENSIONS: 140x71x71h.
■ DIMENSIONS: 160x71x71h.

MULTIPURPOSE TOP

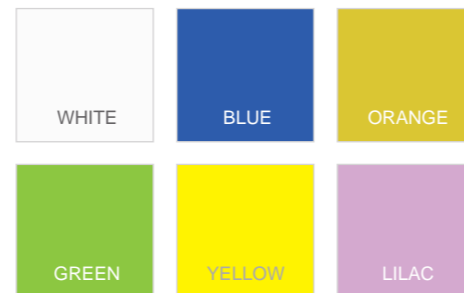
MOD.7908

■ MULTIPURPOSE TOP FOR SQUARE TABLE
■ DIMENSIONS: 39x39x13h.

MODULE COLOURS



TABLE TOP COLOURS



EMBEDDED WHEELS

MOD. 10041R

■ EMBEDDED WHEELS FOR ROUND TUBULAR DIAM. 40

CONNECTION SYSTEM FOR TABLES

MOD.1070

■ COUPLE OF CONNECTORS

CASTOR WITH BRAKE

MOD.1960R

■ RUOTA PER TAVOLO CON FRENO

ELECTRICAL POWER SUPPLY UNIT

USB

■ ELECTRICAL POWER SUPPLY UNIT FOR TABLES
■ MOD.1071N N°01 x 220V.Schuko + N°02 USB
■ MOD.1075N N°02 x 220V.Schuko + N°06 USB

DESK GROMMET

MOD.2660E

■ DESK GROMMET DIAM. 60MM

CERTIFIED CHAIRS ACCORDING TO 1729 1-2

CERTIFIED CHAIRS ACCORDING TO 1729 1-2

PLYWOOD BEECH 4 LEGS

MOD.5190

■ PLYWOOD BEECH 4 LEGS CHAIR
■ AVAILABLE HEIGHTS cm.34/38/43/46H.

PLYWOOD BEECH SLIDING

MOD.5192

■ PLYWOOD BEECH SLIDING CHAIR
■ AVAILABLE HEIGHTS cm.34/38/43/46H.

ADJUSTABLE HEIGHT PLYWOOD BEECH CHAIR WITH WHEELS

MOD.5193

■ ADJUSTABLE HEIGHT PLYWOOD BEECH CHAIR
■ AVAILABLE HEIGHTS REGOLABLE H.43/56

ADJUSTABLE HEIGHT PLYWOOD BEECH CHAIR WITH WHEELS

MOD.5088

■ ADJUSTABLE HEIGHT PLYWOOD BEECH CHAIR
■ AVAILABLE HEIGHTS REGOLABLE H.43/56

MULTIPURPOSE CHAIR

MOD.5045

■ MULTIPURPOSE CHAIR
■ AVAILABLE HEIGHTS H.46

PLYWOOD BEECH CHAIR

MOD.5030

■ CHAIR WITH SEAT AND BACK IN PLYWOOD BEECH
■ AVAILABLE HEIGHTS cm.34/38/43/46/51H.

POLYPROPYLENE 4 LEGS CHAIR

MOD.5170

■ POLYPROPYLENE 4 LEGS CHAIR
■ AVAILABLE HEIGHTS cm.34/38/43/46H.

POLYPROPYLENE SLIDING CHAIR

MOD.5171

■ POLYPROPYLENE 4 LEGS CHAIR
■ AVAILABLE HEIGHTS cm.34/38/43/46H.

ADJUSTABLE HEIGHT POLYPROPYLENE CHAIR WITH WHEELS

MOD.5174

■ ADJUSTABLE HEIGHT POLYPROPYLENE CHAIR
■ AVAILABLE HEIGHTS REGOLABLE H.43/56

POLYPROPYLENE 4 LEGS CHAIR

MOD.5025

■ POLYPROPYLENE 4 LEGS CHAIR
■ AVAILABLE HEIGHTS cm.38/43/46/51H.

I-ROCK STOOL

MOD.5044

■ ADJUSTABLE HEIGHT STOOL
■ DIMENSIONS: DIAM.30x31/53

ACCESSORY FOR CHAIRS

RUBBER END CAPS

MOD.10022SBL

■ ANTI-NOISE PROTECTIONS FOR CHAIRS DIAM. 22MM

WRITING SURFACES



■ WRITING SURFACE COLOR WHITE
 ■ MOD. 9080BA12 DIMENSIONS: 120X100H.
 ■ MOD. 9080BA15 DIMENSIONS: 150X100H.
 ■ MOD. 9080BA20 DIMENSIONS: 200X100H.



■ MAGNETIC SURFACE
 ■ MOD. 9080MA12 DIMENSIONS: 120X100H.
 ■ MOD. 9080MA15 DIMENSIONS: 150X100H.
 ■ MOD. 9080MA20 DIMENSIONS: 200X100H.



■ SLATE LAMINATE WRITING SURFACE
 ■ MOD. 9080AA12 DIMENSIONS: 120X100H.
 ■ MOD. 9080AA15 DIMENSIONS: 150X100H.
 ■ MOD. 9080AA20 DIMENSIONS: 200X100H.



■ CORK SURFACE
 ■ MOD. 9080SA12 DIMENSIONS: 120X100H.
 ■ MOD. 9080SA15 DIMENSIONS: 150X100H.
 ■ MOD. 9080SA20 DIMENSIONS: 200X100H.



■ CARPET SURFACE
 ■ MOD. 9080QA12 DIMENSIONS: 120X100H.
 ■ MOD. 9080QA15 DIMENSIONS: 150X100H.
 ■ MOD. 9080QA20 DIMENSIONS: 200X100H.

SURFACES FOR SHARING INFORMATION...
AN OPEN BOOK FOR EVERYONE!



PARTITION BOARDS



Our partition boards are movable and modular suitable in any space.

The partition boards are:

- *Light*
- *Hygienic*
- *Sanitary*
- *Recyclable*
- *Modular*

They are the ideal accessory to separate environments in total safety in classrooms, canteens, offices, open spaces, gyms, etc ... but also to give the spaces creativity and style.

PLEXIGLASS



■ PLEXIGLAS PARTITION BOARD
■ MOD. 7912AX15N DIMENSIONS: 110x70x155h.
■ MOD. 7912AX20N DIMENSIONS: 110x70x200h.

PERFORATED METAL SHEET



■ PERFORATED METAL SHEET
■ MOD. 7912AF15N DIMENSIONS: 110x70x155h.
■ MOD. 7912AF20N DIMENSIONS: 110x70x200h.

MAGNETIC WHITEBOARD



■ MAGNETIC WHITEBOARD PANEL
■ MOD. 7912AM15N DIMENSIONS: 110x70x155h.
■ MOD. 7912AM20N DIMENSIONS: 110x70x200h.

PARTITION BOARD



■ PARTITION BOARD AVAILABLE IN 2 HEIGHTS

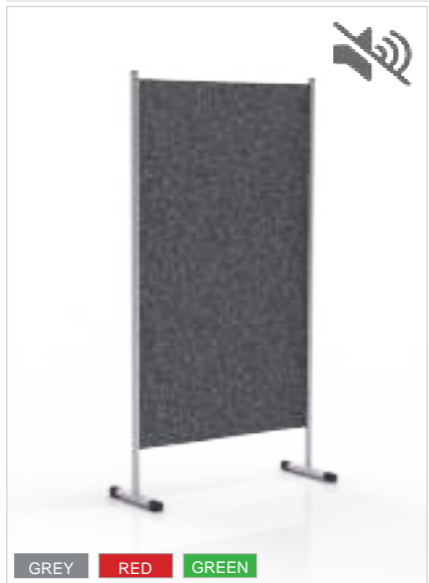
■ PARTITION BOARD CASTORS WITH BRAKE

CORK PANEL



■ CORK PANEL
■ MOD. 7912AS15N DIMENSIONS: 110x70x155h.
■ MOD. 7912AS20N DIMENSIONS: 110x70x200h.

SOUND-ABSORBING



■ GREY ■ RED ■ GREEN

■ SOUND-ABSORBING PANEL WITH CARPET
■ MOD. 7912AQ15 G/R/V DIMENSIONS: 110x70x155h.
■ MOD. 7912AQ20 G/R/V DIMENSIONS: 110x70x200h.

SLATE LAMINATE



■ SLATE LAMINATE WRITING PANEL
■ MOD. 7912AA15N DIMENSIONS: 110x70x155h.
■ MOD. 7912AA20N DIMENSIONS: 110x70x200h.

WHITE LAMINATE



■ WHITE LAMINATE PANEL
■ MOD. 7912AL15N DIMENSIONS: 110x70x155h.
■ MOD. 7912AL20N DIMENSIONS: 110x70x200h.

PLEXIGLASS



■ PLEXIGLAS PARTITION BOARD
■ MOD. 7912BX15N DIMENSIONS: 110x70x155h.
■ MOD. 7912BX20N DIMENSIONS: 110x70x200h.

PERFORATED METAL SHEET



■ PERFORATED METAL SHEET
■ MOD. 7912BF15N DIMENSIONS: 110x70x155h.
■ MOD. 7912BF20N DIMENSIONS: 110x70x200h.



PARTITION BOARD

MAGNETIC WHITEBOARD



- MAGNETIC PANEL
- MOD.7912BM15N DIMENSIONS: 110x70x155h.
- MOD.7912BM20N DIMENSIONS: 110x70x200h.

CORK



- CORK PANEL
- MOD.7912BS15N DIMENSIONS: 110x70x155h.
- MOD.7912BS20N DIMENSIONS: 110x70x200h.

SOUND-ABSORBING



- SOUND-ABSORBING PANEL WITH CARPET
- MOD. 7912BQ15 G/R/V DIMENSIONS: 110x70x155h.
- MOD. 7912BQ20 G/R/V DIMENSIONS: 110x70x200h.

SLATE LAMINATE



- SLATE LAMINATE WRITING PANEL
- MOD.7912BA15N DIMENSIONS: 110x70x155h.
- MOD.7912BA20N DIMENSIONS: 110x70x200h.

WHITE LAMINATE



- WHITE LAMINATE PANEL
- MOD.7912BL15N DIMENSIONS: 110x70x155h.
- MOD.7912BL20N DIMENSIONS: 110x70x200h.

KIT CASTORS WITH BRAKE



- KIT CASTORS WITH BRAKE
- MOD.7790KR4 APPLICABLE TO PANELS WITH 4 SUPPORTS
- MOD.7790KR2 APPLICABLE TO PANELS WITH 3 SUPPORTS



THE SCHOOL NEEDS FLEXIBLE SPACES ABLE TO BE ADAPTED TO CONTINUOUS EDUCATIONAL CHANGES



READING AND SPEAKING AREA

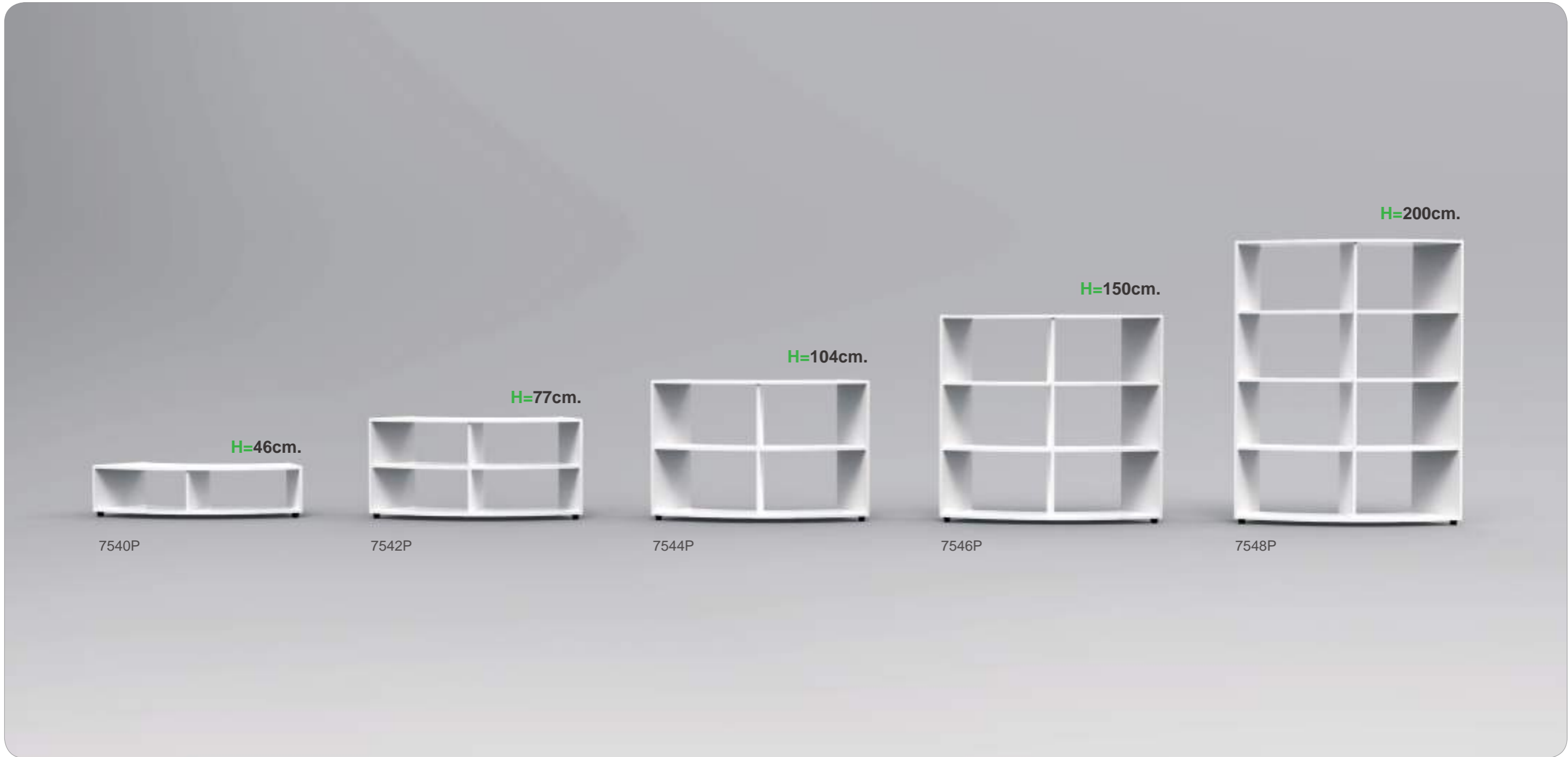


It's a learning space where students may gain a variety of knowledges throughout different educational activities autonomously.

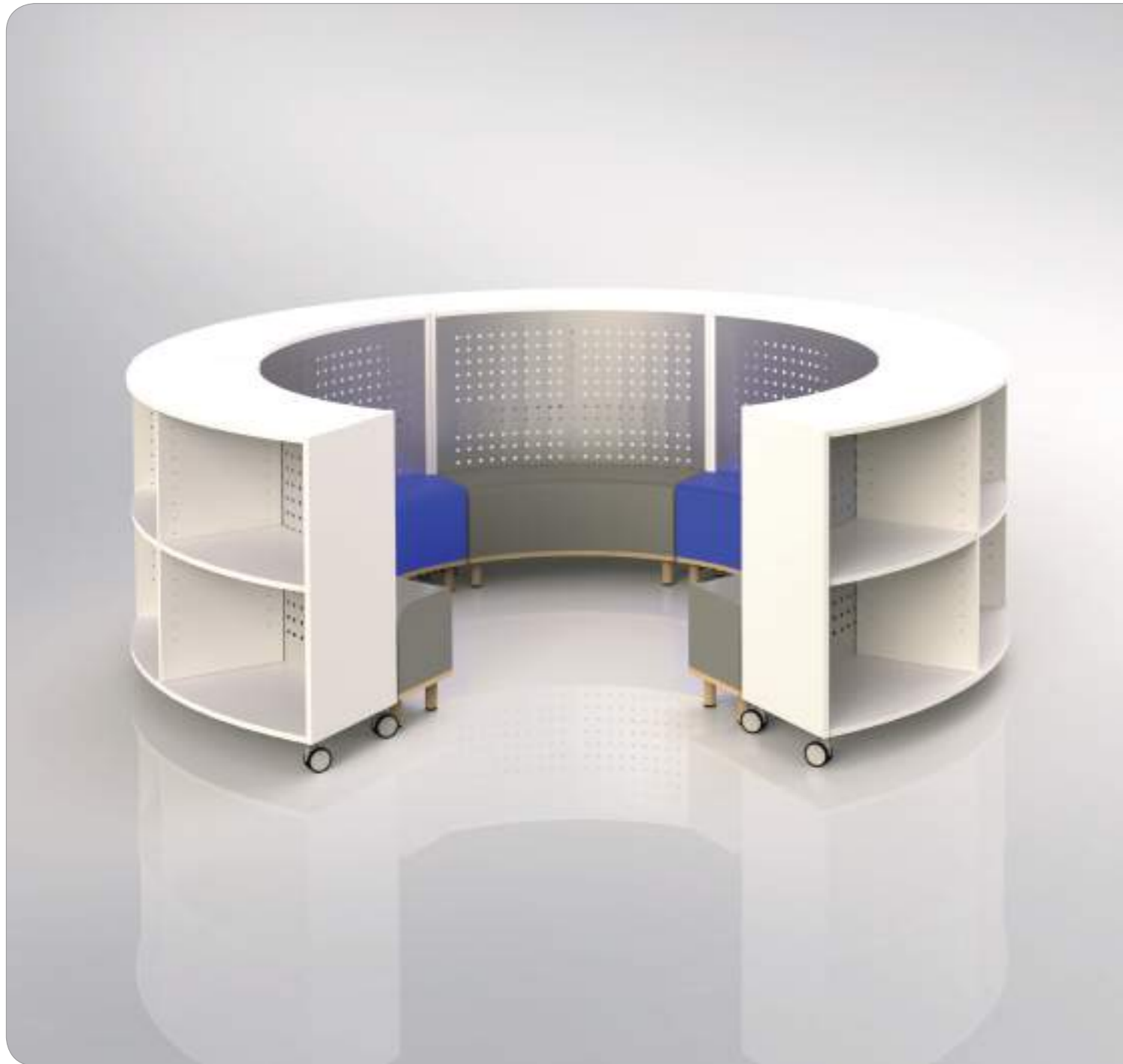
Having this space inside the school increases a student's ability to draw connections to the world, especially to their own lives.



CURVED CABINETS



CURVED CABINETS



■ CURVED MODULE COMPOSITIONS



■ CURVED MODULE COMPOSITIONS



MADE IN ITALY



CURVED CABINETS



■ CURVED MODULE H.46
■ DIMENSIONS: 148x44x46h.



■ CURVED MODULE H.77
■ DIMENSIONS: 148x44x77h.



■ CURVED MODULE H.104
■ DIMENSIONS: 148x44x104h.



■ CURVED MODULE H.46
■ DIMENSIONS: 148x44x46h.



■ CURVED MODULE H.77
■ DIMENSIONS: 148x44x77h.



■ CURVED MODULE H.104
■ DIMENSIONS: 148x44x104h.



■ CURVED MODULE H.150
■ DIMENSIONS: 148x44x150h.



■ CURVED MODULE H.200
■ DIMENSIONS: 148x44x200h.

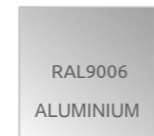
MODULE COLOUR



SHELVES COLOUR



SHEET COLOUR



■ CURVED MODULE H.150
■ DIMENSIONS: 148x44x150h.



■ CURVED MODULE H.200
■ DIMENSIONS: 148x44x200h.

CASTOR FOR CURVED MODULES



■ CASTOR FOR CURVED MODULES

BOOKCASE AREA



CABINETS H 100

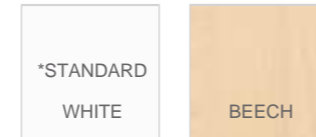




DOORS AND SHELVES COLOURS



STRUCTURES



CABINETS H 100

2 OPEN COMPARTMENTS



■ CABINET 2 OPEN COMPARTMENTS AND 1 SHELF
■ DIMENSIONS: 104x44x100h.

2 DOORS AND 2 COMPARTMENTS



■ CABINET 2 DOORS 2 COMPARTMENTS AND 1 SHELF
■ DIMENSIONS: 104x46x100h.

3 OPEN COMPARTMENTS



■ CABINET 3 OPEN COMPARTMENTS AND 2 SHELVES
■ DIMENSIONS: 104x44x100h.

5 OPEN COMPARTMENTS



■ CABINET 5 OPEN COMPARTMENTS AND 3 SHELVES
■ DIMENSIONS: 104x44x100h.

4 OPEN COMPARTMENTS AND 2 DRAWERS



■ CABINET 4 OPEN COMPARTMENTS 2 SHELVES AND 2 DRAWERS
■ DIMENSIONS: 104x46x100h.

7 OPEN COMPARTMENTS



■ CABINET 7 OPEN COMPARTMENTS AND 4 SHELVES
■ DIMENSIONS: 104x44x100h.

2 DOORS 3 COMPARTMENTS



■ CABINET 2 DOORS 3 COMPARTMENTS AND 2 SHELVES
■ DIMENSIONS: 104x46x100h.

6 OPEN COMPARTMENTS



■ CABINET 6 OPEN COMPARTMENTS AND 4 SHELVES
■ DIMENSIONS: 104x44x100h.

2 DOORS 6 COMPARTMENTS



■ CABINET 2 DOORS 6 COMPARTMENTS AND 4 SHELVES
■ DIMENSIONS: 104x46x100h.

CABINET 24 TRAYS



■ CABINET 24 PLASTIC TRAYS
■ DIMENSIONS: 104x44x100h.

CABINET 12 TRAYS



■ CABINET 4+8 PLASTIC TRAYS
■ DIMENSIONS: 104x44x100h.

2 DOORS 4 TRAYS 6 COMPARTMENTS



■ CABINET 2 DOORS 4 PLASTIC TRAYS AND 6 COMPART.
■ DIMENSIONS: 104x46x100h.

9 OPEN COMPARTMENTS



■ CABINET 9 OPEN COMPARTMENTS AND 6 SHELVES
■ DIMENSIONS: 104x44x100h.

9 DOORS 9 COMPARTMENTS



■ CABINET 9 DOORS AND 9 COMPARTMENTS
■ DIMENSIONS: 104x46x100h.

12 OPEN COMPARTMENTS



■ CABINET 12 OPEN COMARTMENTS AND 9 SHELVES
■ DIMENSIONS: 104x44x100h.

3 OPEN COMPARTMENTS



■ CABINET 3 OPEN COMPARTMENTS AND 2 SHELVES
■ DIMENSIONS: 52x44x100h.

1 DOOR 3 COMPARTMENTS



■ CABINET 1 DOOR 3 COMPARTMENTS AND 2 SHELVES
■ DIMENSIONS: 52x46x100h.

CORNER CABINET 90° AND 3 OPEN COMPARTMENTS



■ CORNER CABINET 90° WITH 3 OPEN COMPARTMENTS AND 2 SHELVES
■ DIMENSIONS: 63x44x100h.



MADE IN ITALY



CABINET H.150

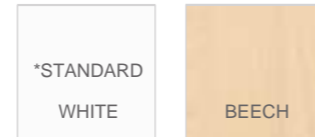




DOORS AND SHELVES COLOURS



STRUCTURES



CABINET H.150

4 OPEN COMPARTMENTS



■ CABINET 4 OPEN COMPARTMENTS AND 3 SHELVES
■ DIMENSIONS: 104x44x150h.

2 DOORS 4 COMPARTMENTS



■ CABINET 2 DOORS 4 COMPARTMENTS AND 3 SHELVES
■ DIMENSIONS: 104x46x150h.

2 GLASS DOORS 4 COMPARTMENTS



■ 2 GLASS DOORS 4 COMPARTMENTS AND 3 SHELVES
■ DIMENSIONS: 104x46x150h.

OPEN CABINET WITH 2 DRAWERS



■ CABINET 7 OPEN COMPARTMENTS AND 2 DRAWERS
■ DIMENSIONS: 104x46x150h.

OPEN CABINET WITH 1 DOOR AND 2 DRAWERS



■ 7 OPEN COMPARTMENTS 1 DOOR AND 2 DRAWERS
■ DIMENSIONS: 104x46x150h.

6 OPEN COMPARTMENTS



■ CABINET 6 OPEN COMPARTMENTS AND 3 SHELVES
■ DIMENSIONS: 104x44x150h.

8 OPEN COMPARTMENTS



■ CABINET 8 OPEN COMPARTMENTS AND 6 SHELVES
■ DIMENSIONS: 104x44x150h.

2 DOORS 8 COMPARTMENTS



■ CABINET 2 DOORS 8 COMPARTMENTS AND 6 SHELVES
■ DIMENSIONS: 104x46x150h.

4 DOORS 8 COMPARTMENTS



■ CABINET 4 DOORS 8 COMPARTMENTS AND 6 SHELVES
■ DIMENSIONS: 104x46x150h.

3 DOORS 9 COMPARTMENTS



■ CABINET 3 DOORS 9 COMPARTMENTS AND 3 SHELVES
■ DIMENSIONS: 104x46x150h.

3 DOORS 6 COMPARTMENTS



■ CABINET 6 DOORS AND 6 COMPARTMENTS
■ DIMENSIONS: 104x46x150h.

9 OPEN COMPARTMENTS



■ CABINET 9 OPEN COMPARTMENTS AND 6 SHELVES
■ DIMENSIONS: 104x44x150h.

2 GLASS DOORS 8 COMPARTMENTS



■ 2 GLASS DOORS 8 COMPARTMENTS AND 6 SHELVES
■ DIMENSIONS: 104x46x150h.

1 DOOR 8 COMPARTMENTS



■ CABINET 1 DOOR 8 COMPARTMENTS AND 6 SHELVES
■ DIMENSIONS: 104x46x150h.

1 GLASS DOOR 8 COMPARTMENTS



■ 1 GLASS DOOR 8 COMPARTMENTS AND 6 SHELVES
■ DIMENSIONS: 104x46x150h.

9 DOORS 9 COMPARTMENTS



■ CABINET 9 DOOR 9 COMPARTMENTS
■ DIMENSIONS: 104x46x150h.

6 DOORS 9 COMPARTMENTS



■ CABINET 6 DOORS AND 9 COMPARTMENTS
■ DIMENSIONS: 104x46x150h.

9 DOORS 9 COMPARTMENTS



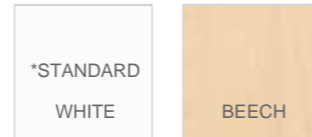
■ MAGAZINE RACK 9 DOORS 9 COMPARTMENTS
■ DIMENSIONS: 104x46x150h.



DOORS AND SHELVES COLOURS



STRUCTURES



12 OPEN COMPARTMENTS



■ CABINET 12 OPEN COMPARTMENTS AND 8 SHELVES
■ DIMENSIONS: 104x44x150h.

10 OPEN COMPARTMENTS



■ CABINET 10 OPEN COMPARTMENTS AND 8 SHELVES
■ DIMENSIONS: 104x44x150h.

10 DOORS 10 COMPARTMENTS



■ CABINET 10 DOORS 10 COMPARTMENTS
■ DIMENSIONS: 104x46x150h.

5 OPEN COMPARTMENTS



■ CABINET 5 OPEN COMPARTMENTS AND 4 SHELVES
■ DIMENSIONS: 52x44x150h.

5 DOORS 5 COMPARTMENTS



■ CABINET 5 DOORS 5 COMPARTMENTS
■ DIMENSIONS: 52x46x150h.

2 DOORS 2 COMPARTMENTS



■ CABINET 2 DOORS 2 COMPARTMENTS
■ DIMENSIONS: 52x46x150h.

CORNER CABINET 4 OPEN COMPARTMENTS



■ CORNER CABINET 4 OPEN COMPARTMENTS 2 SHELVES
■ DIMENSIONS: 63x44x150h.

36 TRAYS OPEN CABINET



■ CABINET 36 PLASTIC TRAYS
■ DIMENSIONS: 104x44x150h.

18 TRAYS OPEN CABINET



■ CABINET 18 PLASTIC TRAYS
■ DIMENSIONS: 104x44x150h.



CABINETS AVAILABLE EVEN IN STRUCTURE COLOUR BEECH



MADE IN ITALY



CABINET H.200

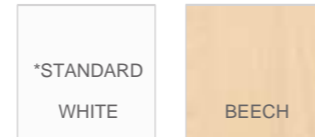




DOORS AND SHELVES COLOURS



STRUCTURES



CABINET H.200

5 OPEN COMPARTMENTS



■ CABINET 5 OPEN COMPARTMENTS AND 4 SHELVES
■ DIMENSIONS: 104x44x200h.

2 DOORS 5 COMPARTMENTS



■ CABINET 2 DOORS 5 COMPARTMENTS AND 4 SHELVES
■ DIMENSIONS: 104x46x200h.

2 GLASS DOORS 5 COMPARTMENTS



■ 2 GLASS DOORS 5 COMPARTMENTS AND 4 SHELVES
■ DIMENSIONS: 104x46x200h.

4 DOORS 12 COMPARTMENTS



■ CABINET 4 DOORS 12 COMPARTMENTS 8 SHELVES
■ DIMENSIONS: 104x46x200h.

2 DOORS 12 COMPARTMENTS



■ 2 DOORS 12 COMPARTMENTS AND 10 SHELVES
■ DIMENSIONS: 104x46x200h.

12 DOORS 12 COMPARTMENTS



■ CABINET 12 DOORS 12 COMPARTMENTS
■ DIMENSIONS: 104x46x200h.

2 DOORS 5 COMPARTMENTS



■ CABINET 2 DOORS 5 COMPARTMENTS AND 4 SHELVES
■ DIMENSIONS: 104x46x200h.

10 OPEN COMPARTMENTS



■ CABINET 10 OPEN COMPARTMENTS 8 SHELVES
■ DIMENSIONS: 104x44x200h.

2 DOORS 10 COMPARTMENTS



■ CABINET 2 DOORS 10 COMPARTMENTS AND 8 SHELVES
■ DIMENSIONS: 104x46x200h.

12 OPEN COMPARTMENTS



■ CABINET 12 OPEN COMPARTMENTS AND 10 SHELVES
■ DIMENSIONS: 104x44x200h.

2 DOORS 12 COMPARTMENTS



■ 2 DOORS 12 COMPARTMENTS AND 10 SHELVES
■ DIMENSIONS: 104x46x200h.

2 DOORS 5 COMPARTMENTS AND COAT HANGER



■ 2 DOORS 5 COMPARTMENTS AND COAT HANGER
■ DIMENSIONS: 104x46x200h.

2 GLASS DOORS 10 COMPARTMENTS



■ 2 GLASS DOORS 10 COMPARTMENTS AND 8 SHELVES
■ DIMENSIONS: 104x46x200h.

18 OPEN COMPARTMENTS



■ 18 OPEN COMPARTMENTS 15 SHELVES
■ DIMENSIONS: 104x44x200h.

12 OPEN COMPARTMENTS



■ CABINET 12 OPEN COMPARTMENTS 10 SHELVES
■ DIMENSIONS: 104x44x200h.

2 DOORS WITH COAT HANGER



■ 2 DOORS 1 COMPARTMENT AND 1 COAT HANGER
■ DIMENSIONS: 104x46x200h.

16 OPEN COMPARTMENTS



■ CABINET 16 OPEN COMPARTMENTS 12 SHELVES
■ DIMENSIONS: 104x44x200h.

6 OPEN COMPARTMENTS



■ 6 OPEN COMPARTMENTS AND 5 SHELVES
■ DIMENSIONS: 52x44x200h.

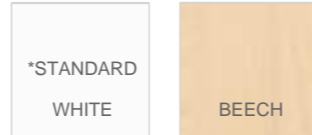


MADE IN ITALY

DOORS AND SHELVES COLOURS



STRUCTURES



2 DOORS 6 COMPARTMENTS



MOD.4076P

■ 2 DOORS 6 COMPARTMENTS AND 4 SHELVES
■ DIMENSIONS: 52x46x200h.

CABINET 1 DOOR 6 COMPARTMENTS



MOD.4077P

■ 1 DOOR 6 COMPARTMENTS AND 4 SHELVES
■ DIMENSIONS: 54x46x200h.

48 TRAYS OPEN COMPARTMENTS



MOD.4065P

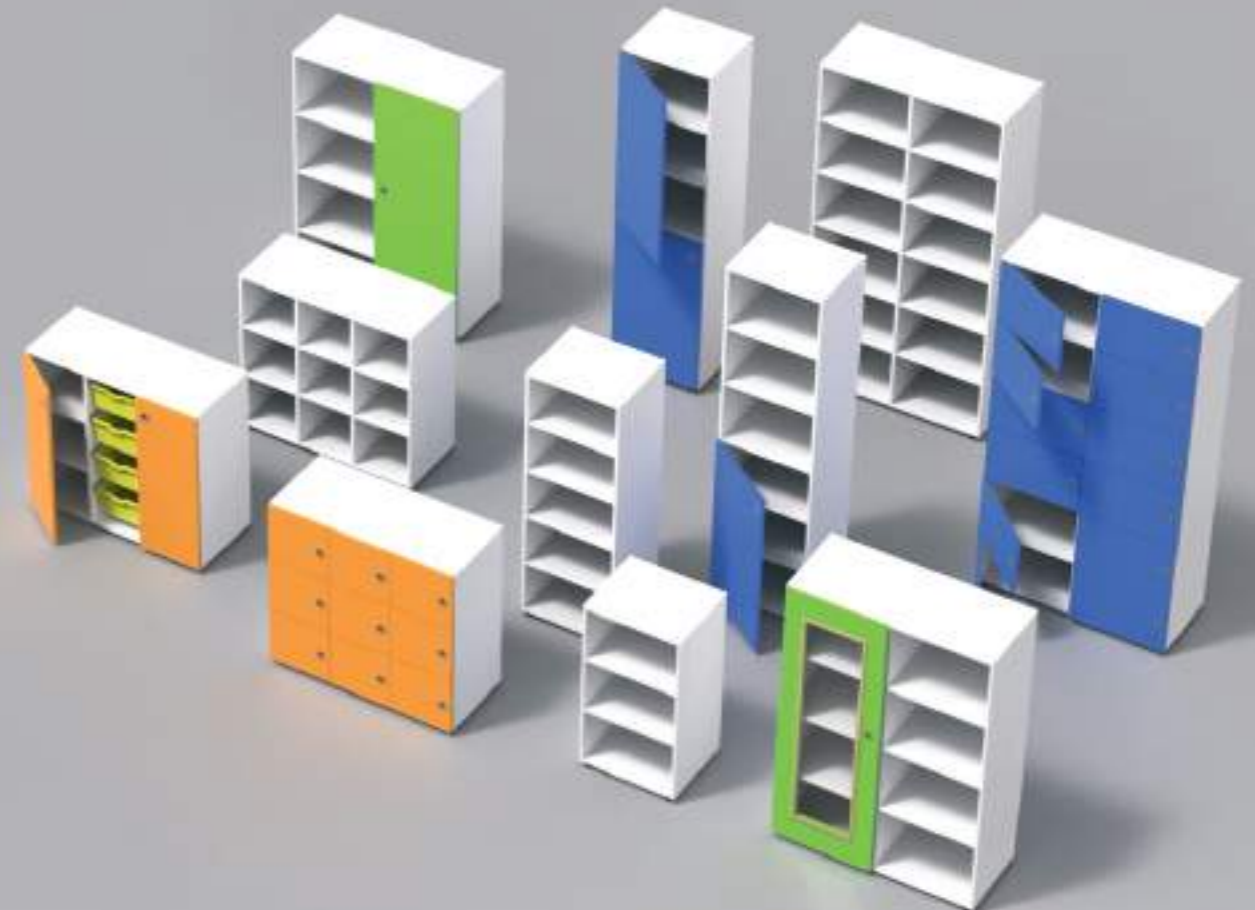
■ CABINET 48 PLASTIC TRAYS
■ DIMENSIONS: 104x44x200h.

24 TRAYS OPEN COMPARTMENTS



MOD.4066P

■ CABINET 24 PLASTIC TRAYS
■ DIMENSIONS: 104x44x200h.





CABINET WITH DRAWERS

CABINET WITH DRAWERS



MOD.7450AR

■ CABINET ON WHEELS WITH 3 DRAWERS
■ DIMENSIONS: 100x46x58h.cm.

The cabinet on wheels is equipped with three drawers. It is designed to be used in the middle of the room or close to bookcases and libraries.



MINILAB MODULE

MINILAB



The minilab workstation with privacy panel responds to the need to create a well-identified and separate work corner, already equipped with a table and shelves. The side panels provide the right level of privacy, while the sliding table offers two workstations. The minilab workstation can be used in the classroom and in the connecting spaces.

MOD.7460AL ■ MINILAB WITH PRIVACY PANEL AND SLIDING
TOP – SOLID WOOD LEGS
■ DIMENSIONS: 122x167x150h. | TOP 135x60x71h

MOD.7460AK ■ MINILAB WITH PRIVACY PANEL AND SLIDING
TOP – METAL LEGS
■ DIMENSIONS: 122x167x150h. | TOP 135x60x71h



OUR FURNITURE RESPECT THE ENVIRONMENT
WE USE ONLY SECOND LIFE WOOD.

NO TREE HAS BEEN CUT DOWN TO PRODUCE YOUR FURNITURE

CERTIFICATION



QUALITY MANAGEMENT SYSTEM



ENVIRONMENT MANAGEMENT SYSTEM



OCCUPATIONAL HEALTH AND SAFETY MANAGEMENT SYSTEMS



SOCIAL RESPONSABILITIES MANAGEMENT SYSTEM



PREMIUM QUALITY MANAGEMENT SYSTEM



PROGRAMME FOR THE ENDORSEMENT OF FOREST CERTIFICATION



Il marchio della gestione forestale responsabile
FOREST STEWARDSHIP COUNCIL





M A D E I N I T A L Y

VASTARREDO Srl
Via Osca 67 | 66054 Vasto (CH) | Italy
Tel. : +39 0873 31421

E-mail : info@vastarredo.it
web: www.vastarredo.it

vastarredo

INNOVATIVE LEARNING FURNITURE