



INTERCOMP

BEYOND **35** YEARS

Solutions for the **healthcare sector**





INTERCOMP

BEYOND **35** YEARS

Intercomp S.p.A.	3
Hardware for the healthcare sector	4
Hardware planning	5
8-step production	6
IT medical cart trolleys	
Eidos IT medical cart trolley	7
Kinetic IT medical cart trolley	8
Motus IT medical cart trolley	9
Motus Plus IT medical cart trolley	10
Medical technologies	
Hospital palmtop	11
Accessories for IT medical cart trolleys	
Smart Battery 480	12
Smart Battery 220	13
Trolley 185 kit	14
Keyboards, mouse and VESA arm	15
Customized solutions	
Advanced customization	16
Wall-mounting keyboard with ODD unit	17
Digifarm digital display for pharmacies	18
Panel PC iCOMED 7200 True Flat capacitive	19

*"When the wind of change blows, some build shelters,
some others build windmills."*



Intercomp S.p.A.

35 years of hardware design and production

35 years of challenges and successes

35 years of energy and passion

Since **1983** we have created custom-made hardware solutions, both standard and customized.

We started producing electronic boards and computers. Today, as at that time, **we shape our customers' ideas.**

5 DIVISIONS

TECHNOLOGIES FOR HEALTHCARE

INDUSTRIAL AUTOMATION

DIGITAL SIGNAGE

DIGITAL OFFICE

SMART PARKING

CORPORATE

Total area

Production capacity

R&D laboratory

Production line

Total employees

9,000 square meters

70,000 systems/year

15 designers

30 specialized operators

70 people

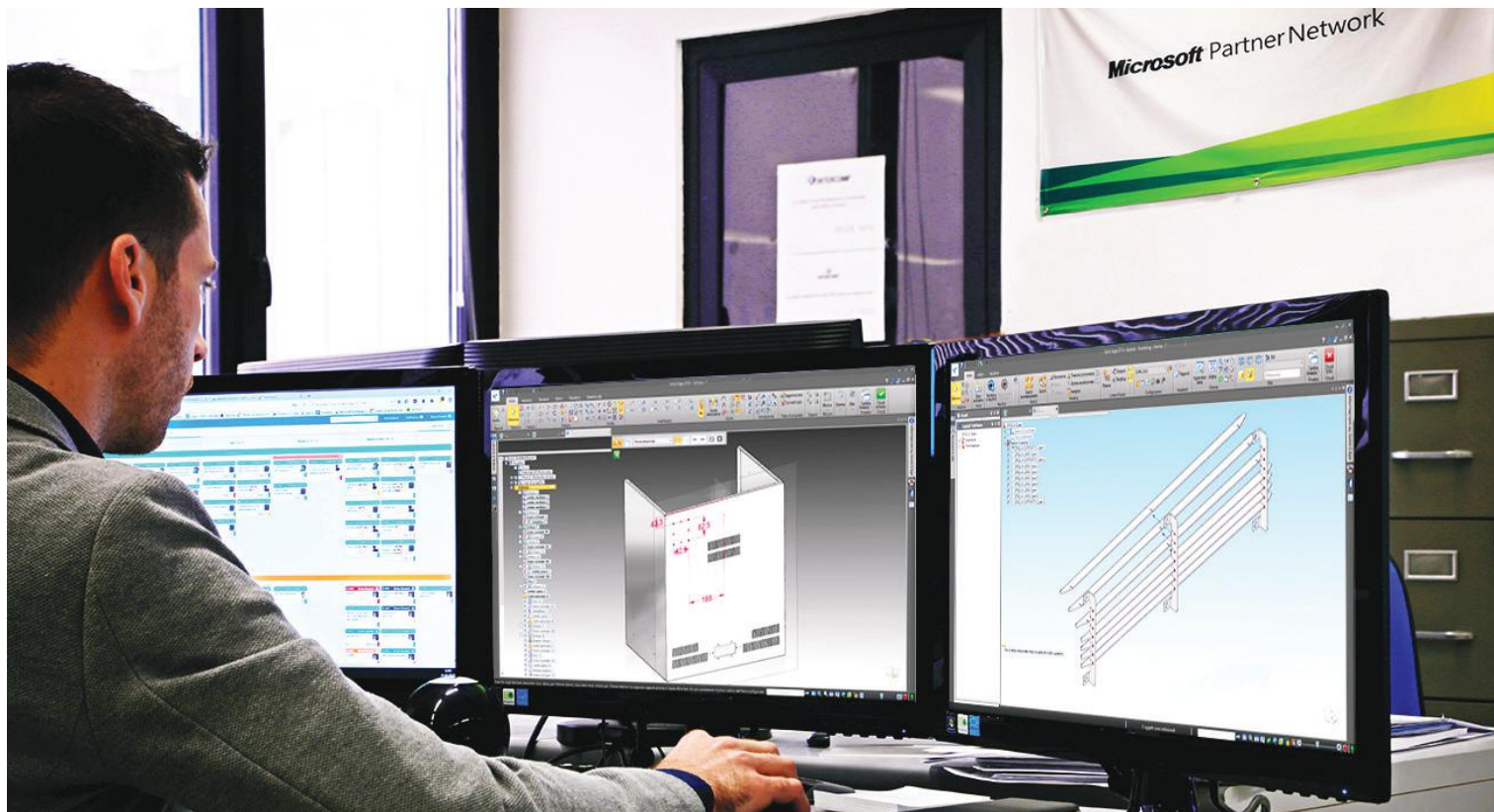




Hardware for the healthcare sector

The medical division of Intercomp is born after a long and profitable experience that the company has acquired producing custom solutions for companies operating in this sector.

- ▶ All technologies for **healthcare and hospital environments** are designed to meet very specific requirements, as they must operate in **particularly delicate contexts**.
- **PERFORMANCE**: the solutions and each related component are built to provide **high performance standards**, in order to support every medical application with **maximum efficiency**.
- **CONTINUITY OF USE**: the devices must guarantee the performance of all the operations for which they have been designed without interruption, keeping the **performance level** unaltered.
- **RELIABILITY**: the healthcare environment needs products that can **support operators efficiently**, avoiding any problems and malfunctions that could cause serious consequences.
- **HIGH PROTECTION**: the design of medical technologies must necessarily comply with the high **safety standards** present in healthcare environments, essential for **safeguarding the health of patients and staff**.
- **FLEXIBILITY**: each context presents different needs and problems and it is therefore important to provide solutions that **perfectly adapt to the specific needs** of each environment and the operations for which they were requested.



Hardware planning

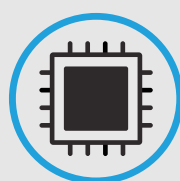
Intercomp can count on a **highly qualified planning department**, composed of **different areas** with **specialized employees** in **mechanical** engineering, **electronic** design and **software** development.

The company boasts a **high technological know-how**, acquired over many years of activity, combined with a great **passion for technology** and the ability to **transform ideas into** highly innovative and reliable **solutions**.



Mechanical planning

Combining creativity, technique and customer's need, the process considers all hardware's features dealing with the achievement of the **maximum synergy between the product and its user**.



Electronic planning

It represents the **foundation** on which the functions of the devices are based. For this reason, it needs **continuous updates, constant scientific researches** and a **great collaboration** with the software development area.



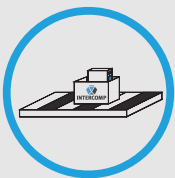
Software development

Working in total synergy with all research and development areas, allows each electronic device **to have life, communicating** in an effective way **both with other machines and the users**.



8-step production

Intercomp can count on a **highly qualified production department**, consisting of **2,100 square meters** of production lines capable of producing up to **70,000** systems a year.



①

Incoming inspection and in&out traceability

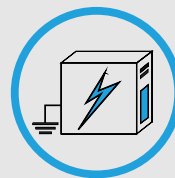
Verification of the quality of all incoming materials and assignment of identification numbers for traceability



②

Production

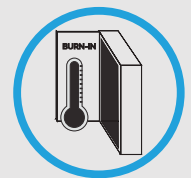
The specialized operators assemble the components on antistatic platforms with automatic advancement



③

Security tests

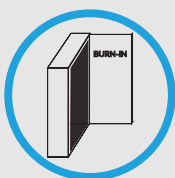
Isolation between cabinet and electricity grid and continuity between cabinet and ground contact



④

Burn-in entry

Continuous stress test for 48 hours with thermal variations, switching on and off



⑤

Burn-in exit

Only devices that pass the tests continue to the next stage



⑥

Final test

Compliance according to the technical supply and testing specifications



⑦

Packaging

Labelling, insertion of manuals, licenses for use, accessories and final inspection



⑧

Logistics

Customized order management service even with different deadlines



IT CART

[VIEW ONLINE](#)

Eidos IT cart trolley

Eidos medical IT cart trolley is a device created following **specific requests** of some hospital facilities and **constantly improved** over the years.

It is a complete solution with an **integrated All-In-One PC**, designed to guarantee **maximum efficiency** and **quality of use**.



- ▶ **Display (All-In-One)**
21.5" LCD with LED technology | 16:9 | Full HD 1920 x 1080 | Tilttable
- ▶ **Touchscreen (All-In-One)**
Projected capacitive technology with multi-touch | Usable with gloves
- ▶ **Battery**
Integrated: about 8 hrs of autonomy | About 6 hrs of recharge | Integrated charge indicator
- ▶ **Cleaning**
Fully cleanable with specific products in use in healthcare environments
- ▶ **Keyboard**
88 keys or 105 keys with touchpad | Sanitizable silicone | IP68 protection degree
- ▶ **Practicality of use**
Quick and easy movements thanks to 125 mm antistatic wheels and front handle



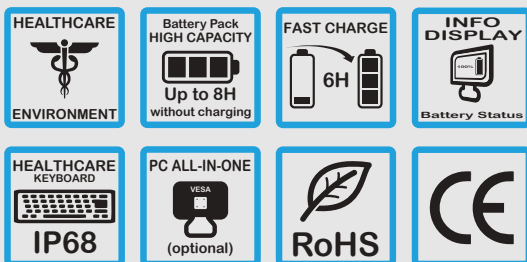
IT CART

[VIEW ONLINE](#)

Kinetic IT cart trolley

Kinetic medical IT cart trolley is an ideal solution for **multiple uses** and prepared for the installation of an **All-In-One PC with touchscreen**.

The **worktop**, made of polymeric material, is designed to guarantee **high antibacterial protection** and is **height adjustable** using an electric actuator.



- ▶ **Battery**
Integrated: about **8 hrs** of autonomy | About **6 hrs** of recharge | Integrated **charge indicator**
- ▶ **Cleaning**
Fully **cleanable** with **specific products** in use in healthcare environments
- ▶ **Practicality of use**
Quick and easy movements thanks to 125 mm **antistatic wheels** and **front handle**
- ▶ **Predispositions**
All-In-One PC installable on VESA support
- ▶ **Display (optional All-In-One)**
21.5" LCD with **LED** technology | **16:9** | **Full HD** 1920 x 1080 | **Tilttable**
- ▶ **Touchscreen (optional All-In-One)**
Projected **capacitive** technology with **multi-touch** | Usable with **gloves**



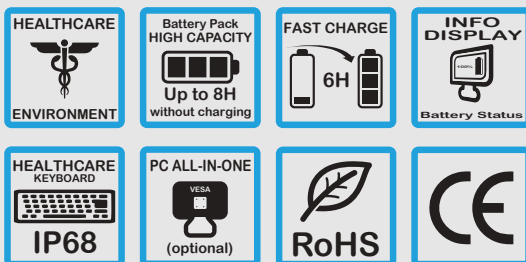
IT CART

[VIEW ONLINE](#)

Motus IT cart trolley

Motus medical IT cart trolley is a **versatile** device that can **efficiently** and **practically** support the work of staff present in healthcare facilities.

It is prepared for the installation of an **All-In-One PC with touchscreen**, which makes it a **complete** product able to **better manage** the activities for which it is designed.



- ▶ **Battery**
Integrated: about **8 hrs** of autonomy | About **6 hrs** of recharge | Integrated **charge indicator**
- ▶ **Cleaning**
Fully **cleanable** with **specific products** in use in healthcare environments
- ▶ **Practicality of use**
Quick and easy movements thanks to 125 mm **antistatic wheels** and **front handle**
- ▶ **Predispositions**
All-In-One PC installable on VESA support
- ▶ **Display (optional All-In-One)**
21.5" LCD with **LED** technology | **16:9** | **Full HD** 1920 x 1080 | **Tilttable**
- ▶ **Touchscreen (optional All-In-One)**
Projected **capacitive** technology with **multi-touch** | Usable with **gloves**



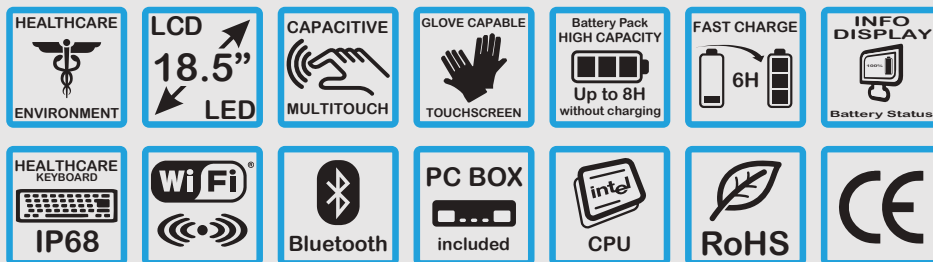
IT CART

[VIEW ONLINE](#)

Motus Plus IT cart trolley

Motus Plus medical IT cart trolley is an evolution of Motus IT cart trolley, to which a **Box PC** and an **18.5" monitor** have been **integrated**.

These implementations make the device a **complete solution**, with all the tools necessary for a **digital management of the activities** of the healthcare staff.



- ▶ **Display**
18.5" LCD with LED technology | 16:9 | Full HD 1920 x 1080 | Tilttable
- ▶ **Touchscreen**
Projected capacitive technology with multi-touch | Usable with gloves
- ▶ **Battery**
Integrated: about 8 hrs of autonomy | About 6 hrs of recharge | Integrated charge indicator
- ▶ **Cleaning**
Fully cleanable with specific products in use in healthcare environments
- ▶ **Keyboard**
105 keys with touchpad | Sanitizable silicone | IP68 protection degree
- ▶ **Practicality of use**
Quick and easy movements thanks to 125 mm antistatic wheels and front handle



[VIEW ONLINE](#)

MEDICAL
TECHNOLOGIES

Hospital palmtop

The **hospital palmtop** is a device designed for the **management** and **verification** of daily hospital practices, able to provide **valuable support** to staff.

It is a **light**, **ergonomic** and **practical** solution, thanks to the **resistance to falls** and to the **reader** for bracelets with barcode.



- **Display**
7" LCD with LED technology
- **Touchscreen**
Projected capacitive technology with multi-touch
- **Resolution**
1200 x 800
- **Dimensions (L x H x D)**
200 x 121 x 14.5 mm
- **Protection**
Resistance to falls up to 90 cm
- **Readers**
Scanner for hospital bracelets with **barcode**



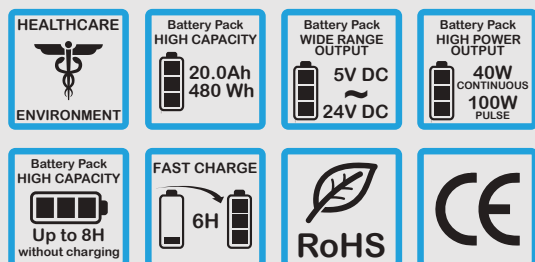
ACCESSORIES

[VIEW ONLINE](#)

Smart Battery 480

Smart Battery 480 is an efficient device developed for **medical equipment** such as IT cart trolleys.

It is equipped with a **wide range of output voltages** and it can easily be integrated with different hardware solutions, even already present inside a hospital structure.



- ▶ **Autonomy**
About **8 hrs** | About **6 hrs** for recharging
- ▶ **Capacity**
20 Ah up to a maximum of **480 Wh**
- ▶ **Output voltages**
Available: 5, 6, 9, 12, 13.5, 18 e 24 V DC
- ▶ **Replacement**
Non-working machine (**Cold swap**)
- ▶ **Dimensions (L x H x D)**
239 x 109.5 x 444.5 mm (backplane with battery pack, cables excluded)
- ▶ **Charge indicator**
4 LEDs for charge status: 25%, 50%, 75% e 100%



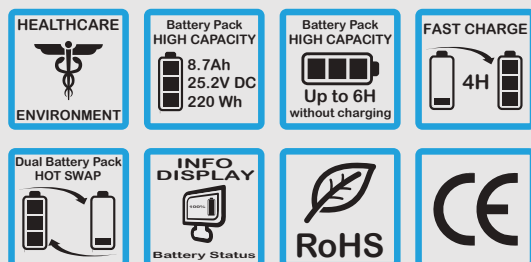
ACCESSORIES

[VIEW ONLINE](#)

Smart Battery 220

Smart Battery 220 is an extremely reliable solution for medical devices that allows **optimum charge management**.

The support for two batteries offers the possibility of **replacement without interruptions**, ensuring **continuity of use** of the device that is powered.



- ▶ **Autonomy**
About **6 hrs** | About **4 h** for recharging
- ▶ **Capacity**
8.7 Ah up to a maximum of **220 Wh** per battery pack
- ▶ **Output voltage**
25.2 V DC
- ▶ **Replacement**
Working machine (Hot swap)
- ▶ **Dimensions related to 2 battery pack (L x H x D)**
320 x 382.5 x 93 mm (with backplane) | **320 x 382.5 x 133 mm** (with charging station)
- ▶ **Charge indicator**
Display info for battery pack | **2 LEDs** for backplane and charging station



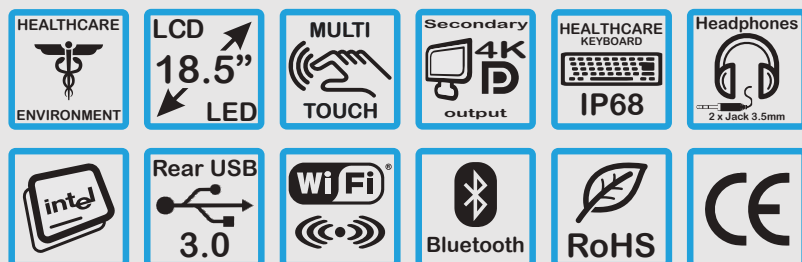
ACCESSORIES

[VIEW ONLINE](#)

Trolley 185 kit

Trolley 185 medical kit is a complete solution consisting of a **compact PC**, a **display** with **multi-touch touchscreen** system and **keyboard**.

It is a product **suitable for any use**, equipped with an **integrated wireless** system and ideal for installation on IT medical cart trolleys.



- ▶ **Display**
18.5" LCD with LED technology | 16:9 | 1933 x 768 | Output for secondary 4K display
- ▶ **Touchscreen**
Multi-touch technology
- ▶ **Keyboard**
105 keys with touchpad | Sanitizable silicone | IP68 protection degree
- ▶ **Dimensions (L x H x D)**
454 x 392 x 260 mm
- ▶ **Cleaning**
Fully cleanable with specific products in use in healthcare environments
- ▶ **I/O connections**
Wide availability of different types of ports



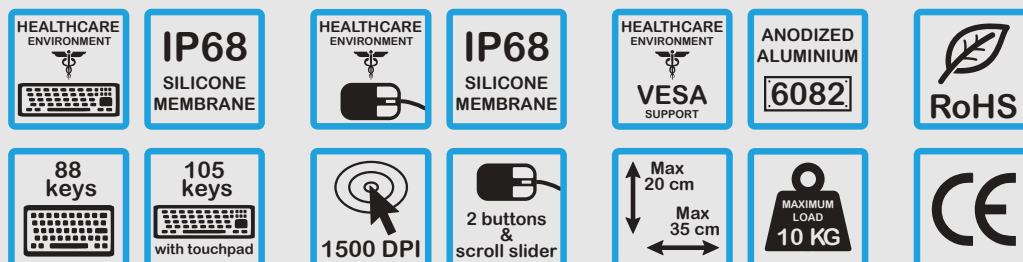
ACCESSORIES

[VIEW ONLINE](#)

Keyboards, mouse and VESA arm

Keyboards and **mouse** for sanitary use are devices designed with a **silicone membrane** that guarantees **maximum safety and sanitization**.

VESA arm is a **solid universal support**, suitable for any compatible PC or display, **adjustable** both vertically and horizontally.



- ▶ **Keyboards**
88 keys or 105 keys with touchpad
- ▶ **Protection degree**
IP68
- ▶ **Mouse**
Laser technology | 1500 DPI
- ▶ **Protection degree**
IP68
- ▶ **VESA support**
Universal **adjustable** arm in **anodized aluminium**
- ▶ **Maximum load capacity**
10 Kg



Advanced customization

From the idea of the customer until its realization: a determining factor for the success of those who choose our custom-made solutions.

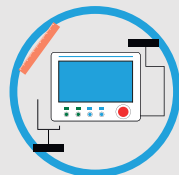
- Over the years we have shaped our design and production activities **to meet the diversity of requirements**.
- There are complex needs that cannot be solved in a standard way. Indeed, **we are designing each single element required to overwhelmed critical environment**.
- It is a **highly qualified technological process** where our design and development empathize with the customer's specifications.
- Through this approach we guide our partners to choose **the most suitable solution for any critical environment**, which needs a product engineering development that **overcomes all technological limits**.



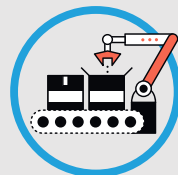
Customer
procedures
and
requirements



Elaboration
of
technical
specifications



Prototyping
and
accuracy
verification



Production,
assembly
and
testing



European
and
International
certifications



Supply
continuity
for 5/7/10
years



[VIEW ONLINE](#)

CUSTOM

Wall-mounting keyboard with ODD

Wall-mounting keyboard with integrated ODD (Optical Disk Driver) is a sanitary device specially designed for **wall installation**.

The integrated **ODD unit** is designed specifically for **viewing medical reports** in DVD format directly inside the operating rooms.



- ▶ **Keyboard**
88 keys or 105 keys with touchpad
- ▶ **Protection degree**
IP68
- ▶ **Cleaning**
Fully **cleanable** with **specific products** in use in healthcare environments
- ▶ **ODD unit**
Integrated | DVD-RW format
- ▶ **Structure**
Painted metal case
- ▶ **Placement**
Wall installation, normally under the monitor for viewing reports



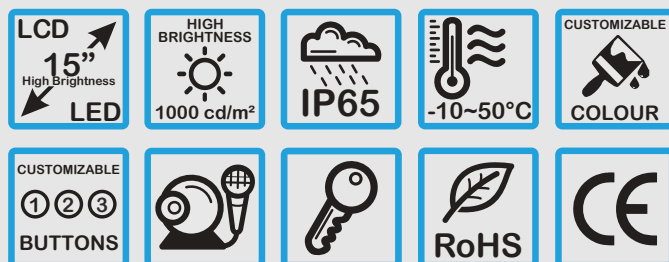
VIEW ONLINE

CUSTOM

Digifarm digital display

Digifarm digital display for pharmacies is an information device that can be installed **outside pharmacies** to convey **different types of messages**.

In fact, it is possible to display **useful information** for users, such as **timetables** and **pharmacies on duty**, as well as promotions and **advertising messages**.



- ▶ **Display**
15" LCD with LED technology | High brightness
- ▶ **Resolution**
1024 x 768
- ▶ **Aspect ratio**
4:3
- ▶ **Protection degree**
IP65
- ▶ **Dimensions (L x H x D)**
389 x 375 x 128 mm
- ▶ **Buttons**
Customizable according to needs



[VIEW ONLINE](#)

CUSTOM

Panel PC iCOMED 7200 capacitive

The **iCOMED 7200 True Flat capacitive Panel PC** is a device designed for **medical environments**, an evolution of the industrial Panel PC technology.

It is equipped with an **extremely resistant tempered glass** flat screen and can be **wall-mounted** using a special **frame** for a secure fixing.



- ▶ **Display**
21.5" LCD with LED technology
- ▶ **Touchscreen**
Latest generation **multi-touch capacitive**, usable with gloves
- ▶ **Supported processors**
Intel®: J1900, i3, i5, i7
- ▶ **Degree of protection**
IP65 on the front side
- ▶ **Positioning**
Wall-mounting with support frame for wall plug fixing
- ▶ **Cooling system**
Fanless, for narrow and critical spaces implementation



INTERCOMP

BEYOND **35** YEARS

INNOVATION TECHNOLOGY FACTORY

marketing@intercomp.it
Via della Scienza 27 - 37139 Verona
+39 045/8378411
www.intercomp.it

