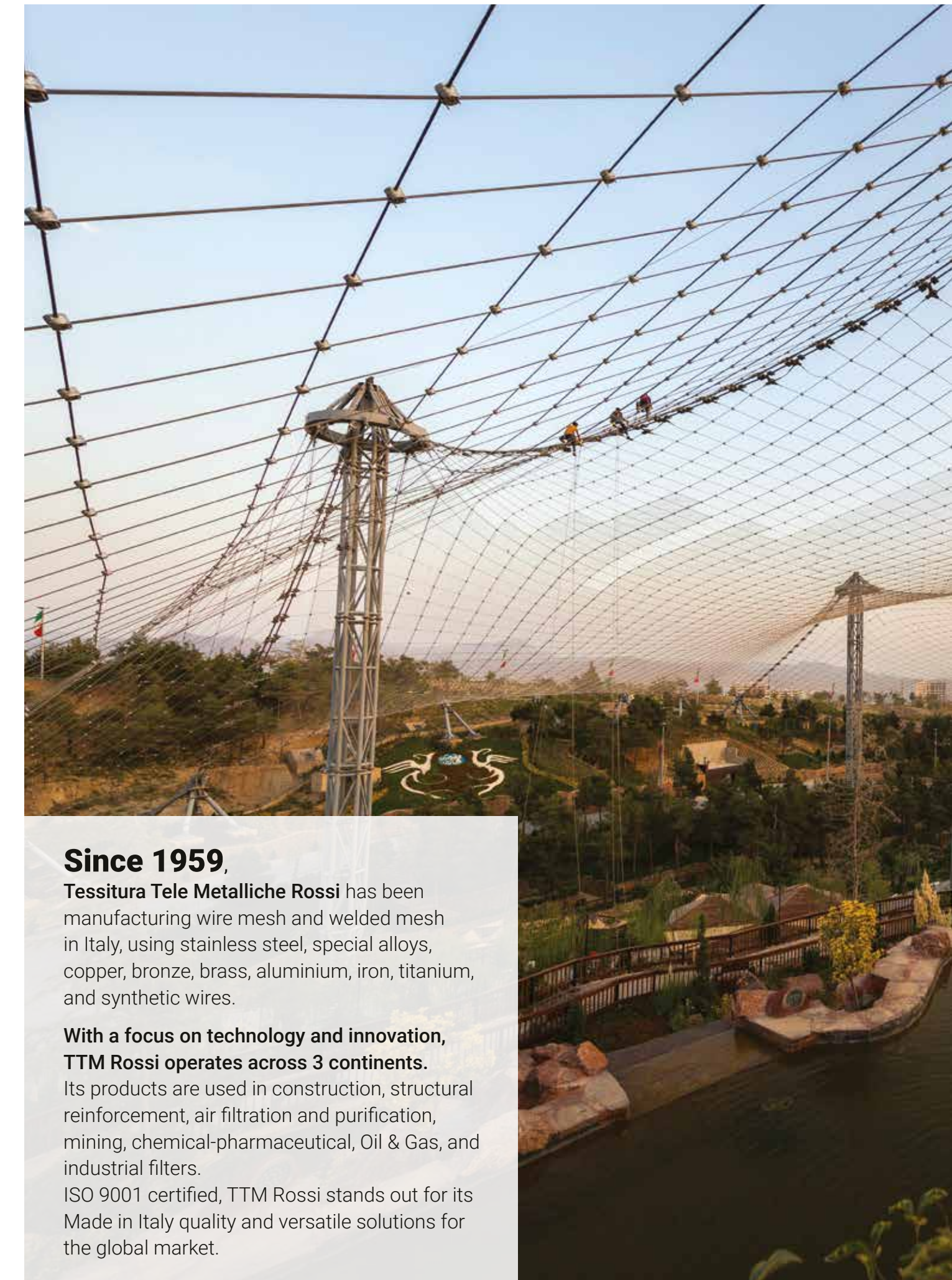




Tessitura Tele Metalliche Rossi srl
 22079 Villa Guardia / CO Italy
 via dell'Artigianato 16
 tel +39 031 480350
 info@ttmrossi.it www.ttmrossi.it



Since 1959,

Tessitura Tele Metalliche Rossi has been manufacturing wire mesh and welded mesh in Italy, using stainless steel, special alloys, copper, bronze, brass, aluminium, iron, titanium, and synthetic wires.

With a focus on technology and innovation, TTM Rossi operates across 3 continents.

Its products are used in construction, structural reinforcement, air filtration and purification, mining, chemical-pharmaceutical, Oil & Gas, and industrial filters.

ISO 9001 certified, TTM Rossi stands out for its Made in Italy quality and versatile solutions for the global market.

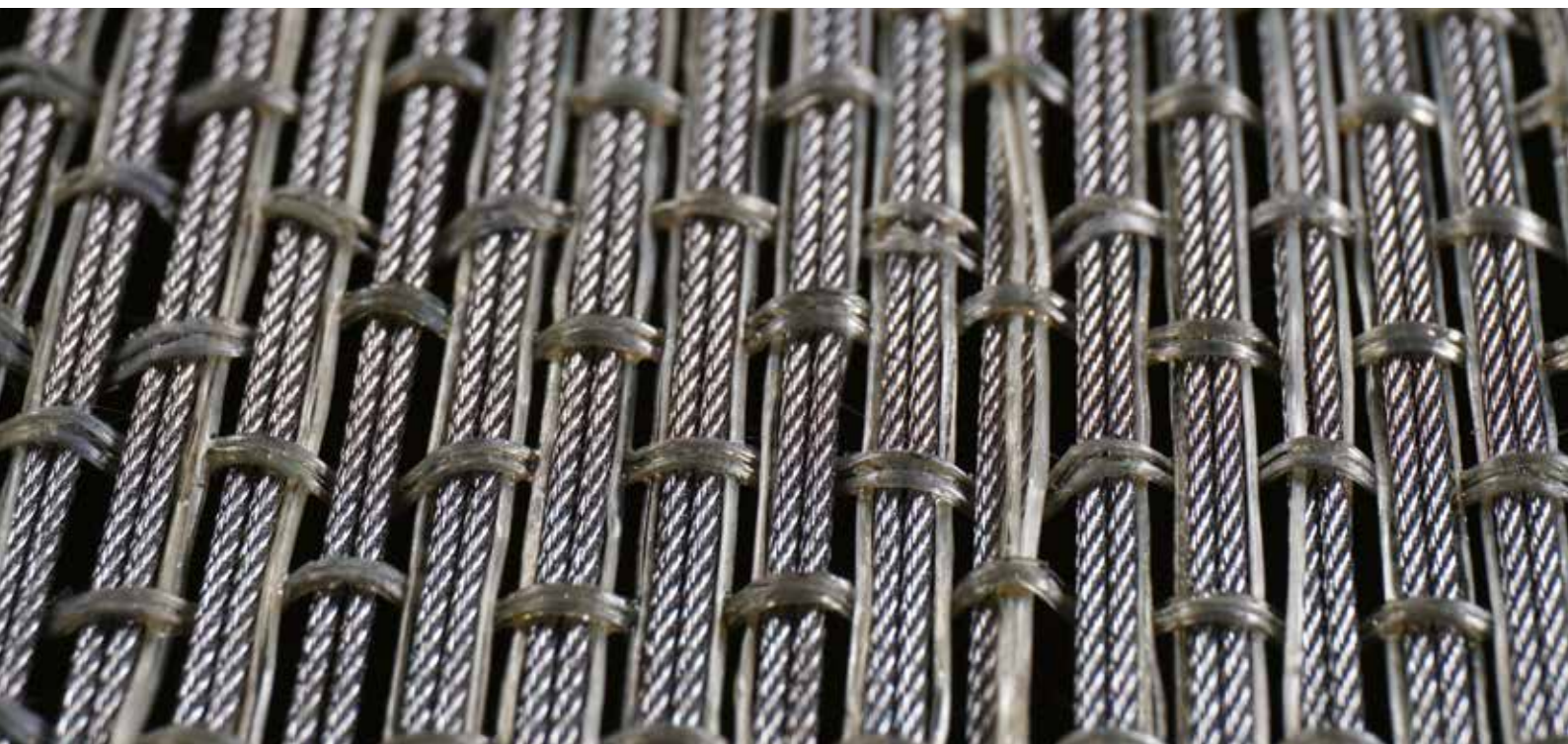
UNIDIRECTIONAL

High-strength unidirectional galvanized steel reinforcement fabric for structural strengthening.

The unidirectional technical reinforcement fabric is made of high-strength galvanized filaments. Specifically designed for use with inorganic matrices, it is applied in the structural consolidation of masonry works, reinforced concrete elements, and prestressed reinforced concrete structures.

Applications:

- Structural reinforcement of existing masonry
- Creation of reinforced edge beams
- Consolidation interventions for vaults
- Flexural and shear reinforcement of beams and slabs
- Jacketing and confinement of vertical elements (columns and pillars)
- Production of prefabricated concrete elements with light reinforcement
- Creation of reinforced clay brick elements
- Light reinforcement
- Creating reinforced clay bricks



KNITTED MESH

In the sectors of technical wire mesh, separation and filtration technologies for industry and safety, **TTM Rossi positions itself as one of the leading suppliers of separation products and advanced filter modules.** Knitted wire meshes offer excellent damping properties, ensuring reliable protection for sensitive components during operation.

TTM Rossi boasts the development of customized damping elements for various applications, including:

- Engines
- Turbines
- Automated production machines



What are the advantages of Rossi knitted wire meshes?

Our knitted wire meshes are notable for their wide range of applications, spanning from environmental and process engineering to vandalism protection in public transport systems and the automotive industry. We design and produce customized solutions for individual and series production, responding precisely to the specific requirements of our clients. The optimized three-dimensional structure of the mesh ensures high stretchability and resilience, fundamental characteristics for various intended uses.

What are the application fields of Rossi knitted wire meshes?

Thanks to a wide selection of base materials and additives, our knitted wire meshes are used in various sectors, offering high-performance solutions for:

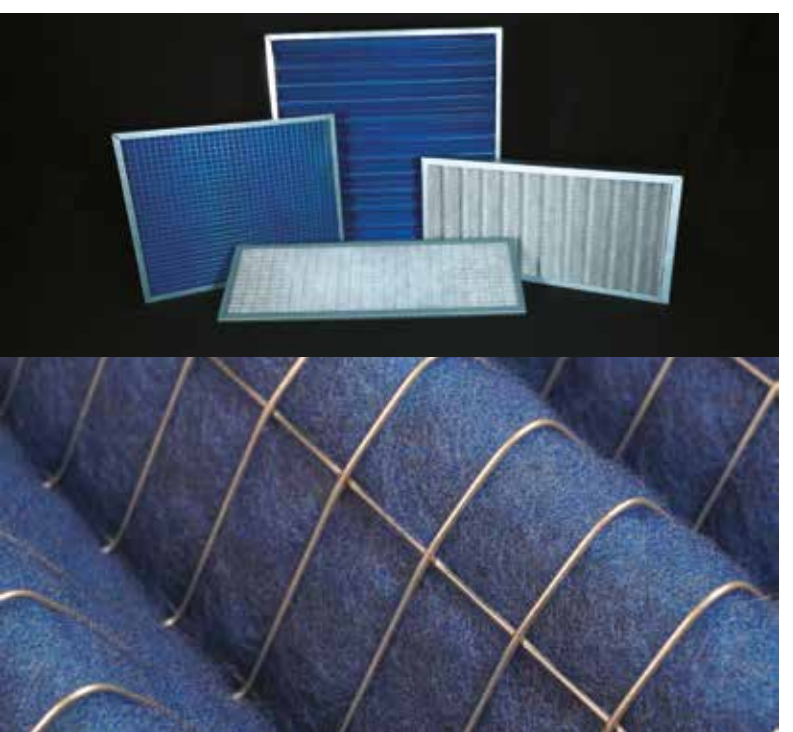
- Filter technology
- Environmental and process engineering
- Bearing and damping elements / vibration decoupling
- Damage resistance
- Silencers
- Heat/thermal insulation
- Sealing elements
- Separation applications
- Filling material to avoid dead volume
- EMC applications



ELECTROWELDED

TTM Rossi electro-welded mesh represents a high-quality solution for the construction industry, surpassing common market standards.

Used as light, non-structural reinforcement, it effectively prevents the formation of cracks in rapid-hardening concrete mixes, thin cement screeds, sub-floorings, and plasters (both vertical and horizontal), improving resistance to thermal stresses. Their versatility also makes them suitable for adhesive laying on existing screeds or floors, increasing the cohesion and flexibility of the adhesive-tile system.



Building:

The modularity and variability of wire meshes offer infinite design possibilities. By adjusting the wire diameter and mesh size, a more or less pronounced transparency can be achieved, opening up limitless creative horizons for architects and designers.

Applications:

- Underfloor heating systems
- Renovation and structural consolidation works
- Construction of tunnels, bridges, and port infrastructures
- Innovative design false ceilings
- Functional and aesthetic partition walls
- Protective elements such as railings with a strong visual impact
- Creation of original furnishing elements
- Advanced systems for ventilated facades
- External cladding of buildings with unique solutions

Building mesh

The architectural meshes that TTM Rossi produces specifically for use in the construction sector are characterised by high quality and aesthetic parameters.

MetalDesign meshes are used to cover external facades, stair/lift blocks, gazebo covers and sunshades.

Their main characteristics are:

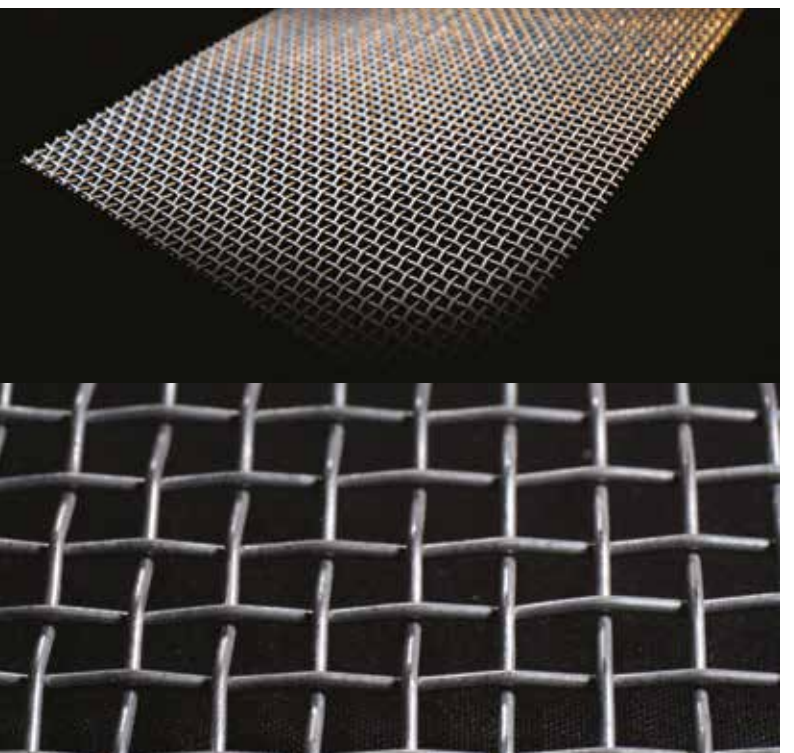
- fire resistance,
- no maintenance,
- simplicity and speed of application,
- unlimited duration over time and total recyclability,
- shielding of the sun ray and relative decrease of the thermal load inside the building,
- sunscreen function and partial protection from rain and wind,
- possibility of installation on new or already existing structures.

QUADRA 3X3

Quadra mesh represents the foundational element of the MetalDesign collection dedicated to architecture field. The warp and weft stainless steel wires intersect each other with regularity, creating a consistent square mesh.

Functional, chromatically neutral, formally essential, transparent, elegant, rigorous: these are the primary attributes that define Quadra 3x3.

Its structural rigidity allows for the creation of sharp geometric cuts and facilitates its application to surfaces characterized by sharp edges.



Air filter cell

TTM ROSSI electro-welded mesh: high-performance support for filter cells.

In the air filtration sector, our electro-welded meshes are used as robust reinforcement for filters, effectively supporting filter media made of synthetic fiber or metal mesh.

Their unique combination of high stability and a large open area ensures neutrality with respect to the airflow, preserving the filter's performance.

A dedicated department, equipped with specific cutting machines, allows us to offer customized electro-welded mesh panels with short delivery times and competitive costs, even for limited quantities.

