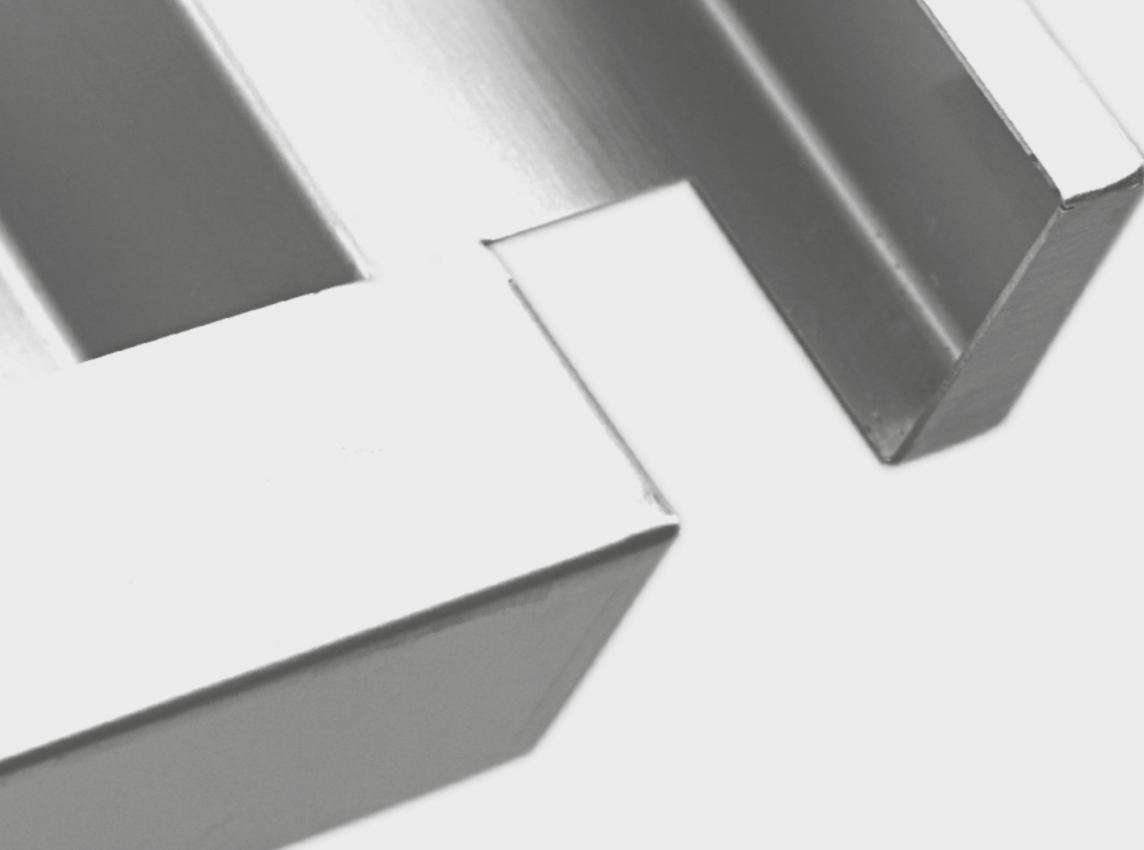


 **metal's**
PADOVA • ITALIA • 1987

metals.it

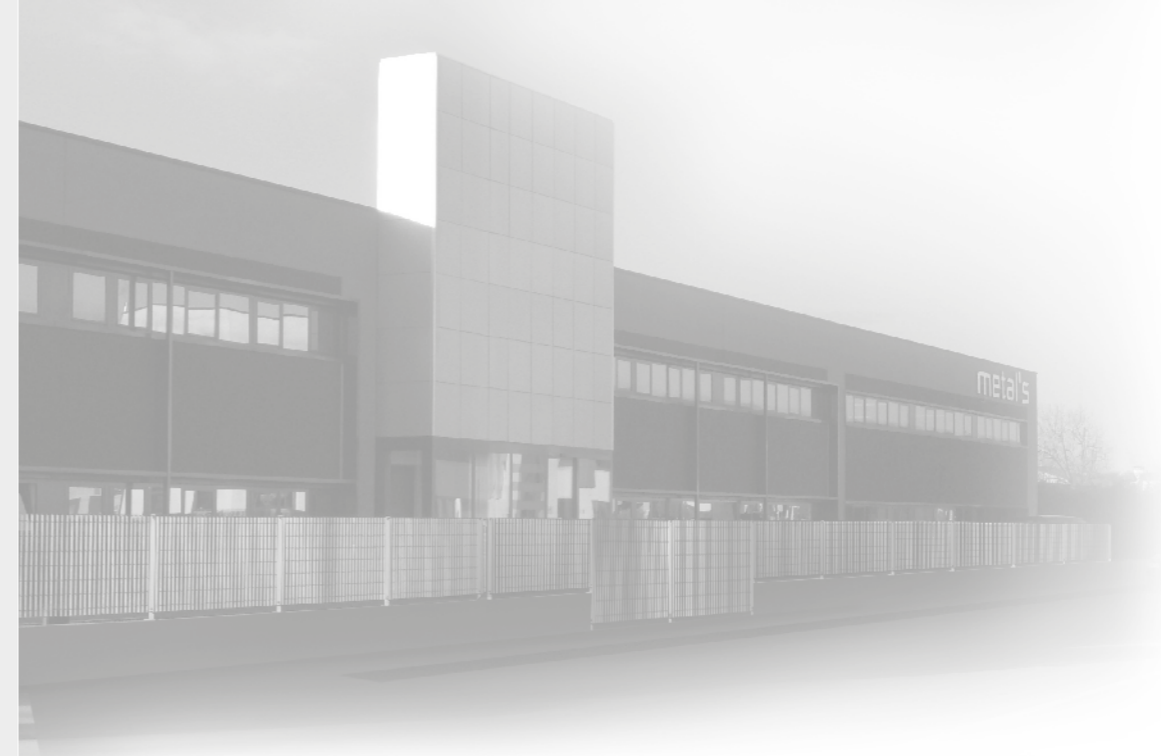


“La mission di Metal’s è essere il partner ideale dei player del mercato globale completando i loro processi produttivi con soluzioni innovative e tecnologicamente avanzate.”

“Metal’s mission is being the ideal partner for the global market players completing their productive processes with innovative and technologically advanced solutions.”

“Die Mission Metal’s ist es, die Produktionsprozesse der globalen Marktspieler mit innovativen und technologisch modernsten Lösungen zu ergänzen und somit ihr idealer Geschäftspartner zu sein.”

La mission de Metal’s est d’être le partenaire idéal des acteurs du marché global en complétant leur cycle de production, en proposant des solutions innovantes et technologiquement avancées.



Metal’s is a dynamic industrial company whose success is based on the development and production of stainless steel partly-finished components in advanced state of assembly. Avant-garde technologies and our production and human resources potential enable rapid and efficient solutions. In the last years Metal’s has become a reference partner for many customers on the international market in many business sectors.

PROJECT

Technical department task is in charge of customer technical assistance in order to study the effectiveness of projects, solve eventual problems and suggest better solutions or product personalization.

PRODUCTIVE PROCESS

Metal's production cycle is based on a several-year experience and can go well with any productive sector. It is studied and arranged in order to grant maximum flexibility and trustworthiness. The organization begins with checking the raw materials and goes along with industrial steps divided into first manufacturing and finishes. All steps have strict qualitative standards.

QUALITY CONTROL

It is based on:

- standard process parameters,
- specific personalized parameters according to the single order,
- aesthetical and dimensional controls on the finished product.

HUMAN RESOURCES

Human resources are an essential component in the company. Thanks to their energy and motivation they determine the quality and style of the work enriching day by day the relationship between Metal's and customers with a relevant added value for Metal's service.

Our core business is divided into 5 main steps

ENGINEERING

A dynamic market requires the definition of the company processes and their industrialization in order to obtain better processes and improve productivity. In this way after prototypes it is possible to start mass production reducing the time - to-market.

The strategic engagement of Metal's aims at keeping the customer's fidelity through an arrangement and productive plan based on flexibility and precision, on planning and service, on machine pool development and on the pride of doing always better in order to face market challenges.

The cutting operation is made by 5 laser machines, 2 laser-combined punching machines and one further punching machine. Some of these technologies have automatic loading. This process is able to produce drawings up to 20 mms high, cutting up to 12 mms (stainless steel in nitrogen), threading and in some cases bending. If necessary these finishes are made in one single production cycle in order to get high quality and maximum precision.

A

Bending operation is performed among others by 2 automatic robotised machines. Further 8 bending machines with automatic control system with power up to 200 t and bending-capability to 4000 mm complete the range.

B

Pressing is made by different machines: hydraulic machines up to 1000-ton bar capacity and mechanic machines. This operation is completed with the realization of specific dies, which are designed in cooperation with the customer in order to reduce costs and harmonize the process.

C

Welding is a special cycle of the productive process made by TIG pulsed machines and MIG digital machines, placed on robotised systems that are able to get maximum quality even for thin thickness.

D

Brushing is a finish operation of components that makes use of 3 robots, these are able to get constant high quality brushing and polishing.

E

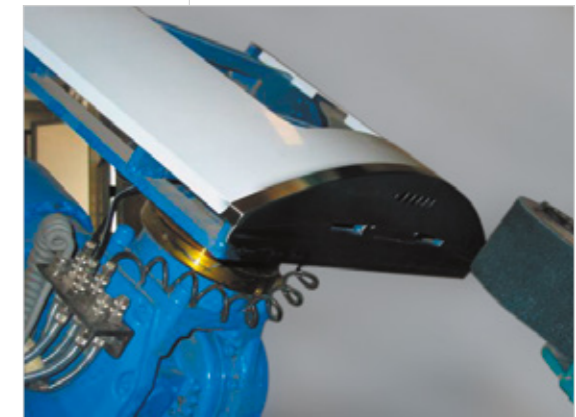
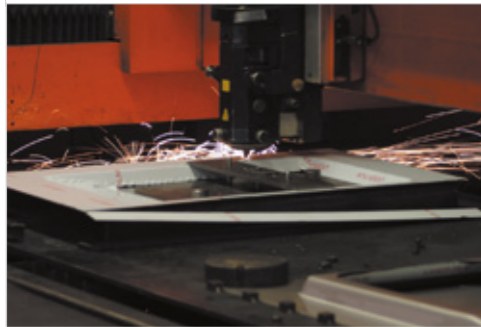
>> Productive Cycle

>>>

>>>

>>

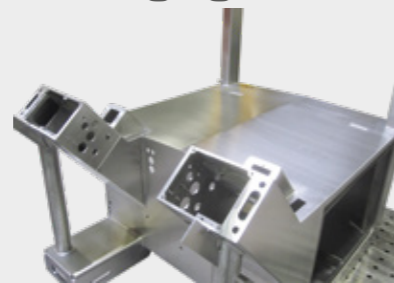
>>



Our assembling division, thanks to constant updates, can excellently fit to the customers' requirements. We are set to provide also products in advanced processing state and to assembly milling and turnery parts, as well as tube and electrical components together with the parts we manufactured.

CHIEF MARKET SECTORS:

Packaging



Professional kitchens



FRAME

Professional kitchens



COOKING CHAMBER



COMMERCIAL BONE SAW

Other market sectors:

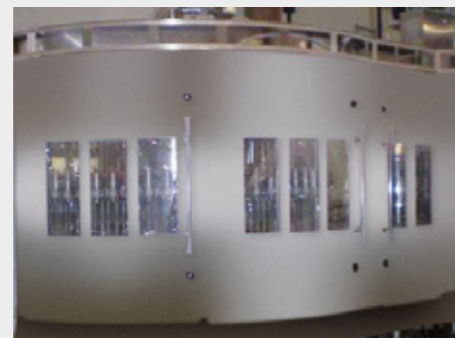
- Refrigeration,
- Medical components,
- Industrial fittings,
- Furniture,
- Access control.

CERTIFICATIONS

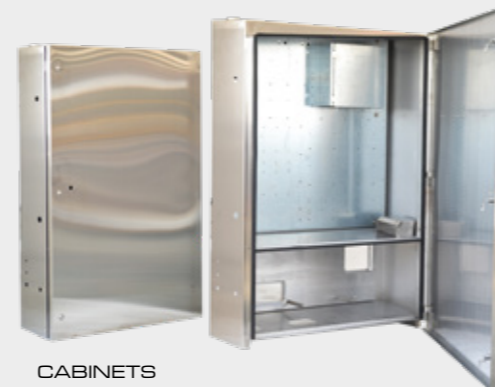


Metal's was one of the first companies to get an international quality certification, obtaining in particular in 2018 the International company quality certificate ISO 9001:2015. In this way Metal's demonstrates the high quality level of its organization that enabled its being a trustworthy business partner.

Bottling



Washing



CABINETS



FRYING MACHINE FOR PROFESSIONAL KITCHENS

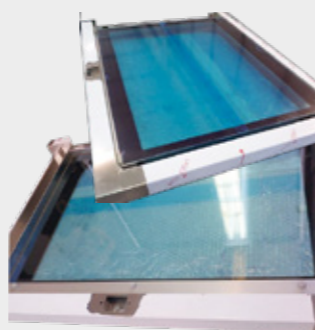
Bakery equipment



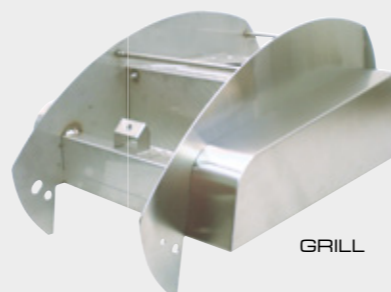
BAKERY CART



PROFESSIONAL KITCHEN: OVEN DOOR



CUP-HEATING MACHINE



GRILL



BRATT PAN FOR PROFESSIONAL KITCHENS

STRATEGIC GOALS

Following targets could be reached thanks to a careful management:

- Rationalization of all production-processes
- Continuous updating and retraining of the human resources
- Further logistics integration with our customers, turning towards the supply-chain.
- New communication-system,
- Continued product promotion through co-operation with outsources.





CUTTING DIVISION

- 1 FinnPower SHEAR GENIUS SGG6 punching machine with shearing facility loading/unloading.
- 1 BYSPRINT laser cutting system with pallet change 1800 w. capacity, 1500x3000.
- 1 BYSTAR laser cutting system with pallet change 2800 w. capacity, 1500x3000.
- 1 BYSPEED laser cutting system with pallet change 4400 w. capacity , 1550x3000.
- 1 BYSPEED laser cutting system with pallet change 4400 w. capacity , 1550x3000 with automatic storage.
- 1 combined punching, system-laser punching machines 2500 w. capacity, with automatic loading/unloading, 1250x2500.
- 1 COSTA sander plant.
- 1 TRUMPF laser cutting system with pallet change 5000 w. capacity, 1500x3000.



BENDING DIVISION

- 1 XPRESS robotised bending cell 150t.x4000.
- 1 robotised bending cell PBS 135t.x4000.
- 1 GASPARINI Syncro bending-machine PB35tx1600.
- 1 GASPARINI Syncro bending-machine PBS135tx3000.
- 1 GASPARINI Syncro bending-machine PBS105tx3000.
- 1 GASPARINI Syncro bending-machine PBS105tx3000.
- 1 GASPARINI Syncro bending-machine PBS100tx4000.
- 1 SCHIAVI Syncro bending-machine HFB170tx4000.
- 1 GASPARINI L4000X shearing machine for thickness up to 40/10.
- 1 GASPARINI Syncro bending-machine PBS165tx4000.
- 1 GASPARINI Syncro bending-machine PSG200tx4000.



PRESSING DIVISION

- 1 20 t. eccentric press.
- 1 100 t. eccentric press.
- 1 straight-sided mechanical press SPIERTZ 350 t. with 1850x1250 plans and endowed with blank holder.
- 1 hydraulic press MURARO 600 t. with 1400x1200 working plans endowed with 400 t. blank holder.
- 1 hydraulic press STAMAC 1000 t. with 2500x1400 working plans.



WELDING AND ASSEMBLING DIVISION

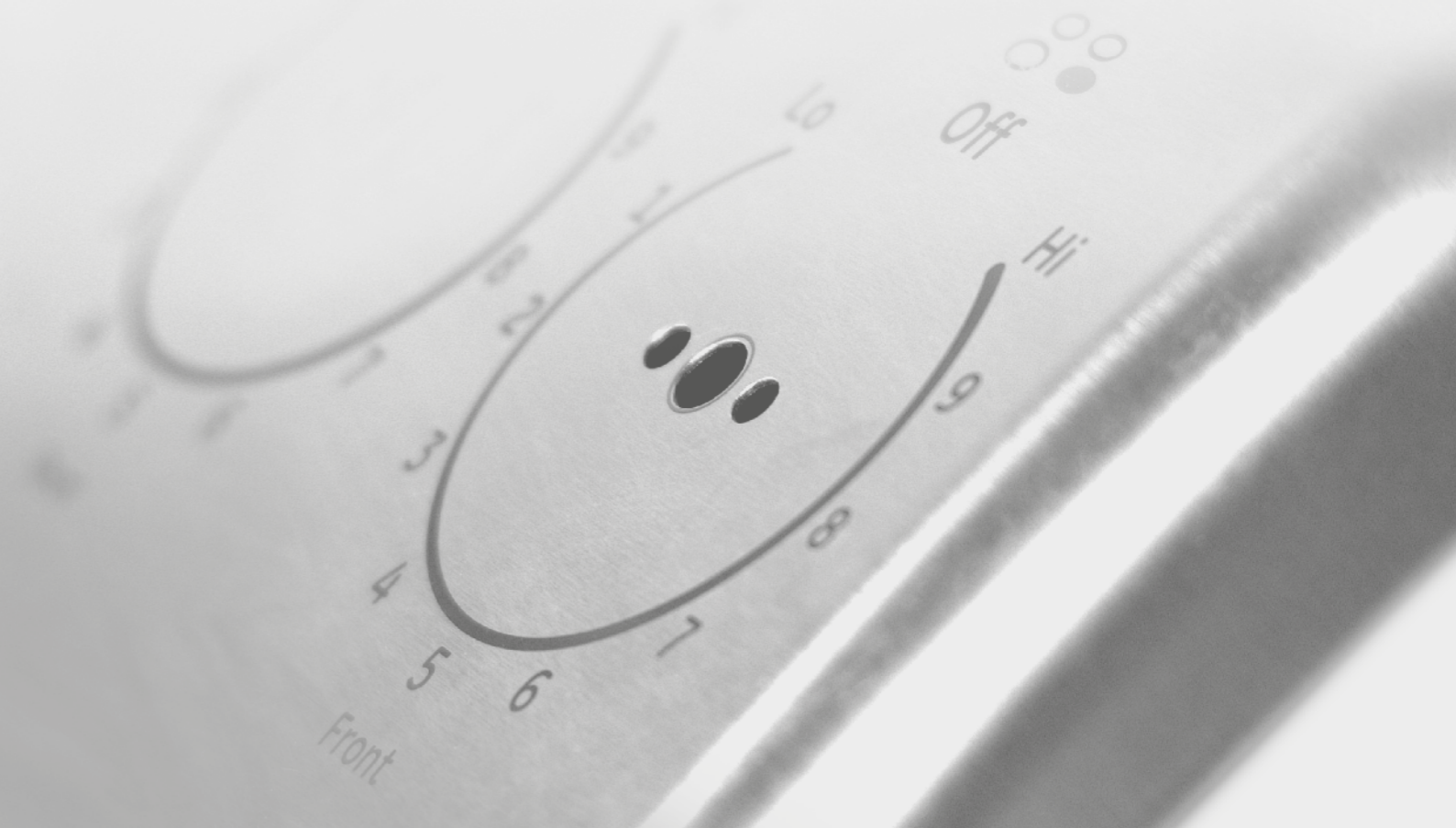
- 3 robotised brushing plants for stainless steel finishing and treatment.
- 1 welding robot plant MOTOMAN with MIG - TIG equipment and 4 cold-wire welding plants.
- 1 welding robot plant Panasonic with 4-plant TIG equipment.
- 1 welding robot plant MOTOMAN with 4-plant digital MIG equipment.
- 1 welding robot plant MOTOMAN with 2-plant TIG equipment.
- Round-bending machines for thickness up to 4 mm.
- Column, hung and repeater (rhythmic) spot-welding machines.
- TIG, MIG and plasma welding machines with computer controlled power and frequency.
- Special machines and equipment for linear and round welding.
- Control room with 3D machinery with 1500x2500 working plans.
- Machines for dimensional and electrical quality control.
- 1 Blasting booth.
- Other machines: satin finishing, brushing and burring systems.

“Un problema può avere soluzioni facili o difficili tutto dipende da quale angolazione lo si sa prendere.”

“A problem may have easy or difficult solutions all depends on how one can face it.”

“Ein Problem kann einfache oder schwierige Lösungen haben es hängt nur vom Blickwinkel, von dem aus man es anpackt, ab.”

“Un problème peut avoir des solutions simples ou compliquées, tout dépend de la manière avec laquelle l'aborde.”



METAL'S spa - via marconi, 1 - 35010 borgoricco PD italy
tel +39 049 9335777 - fax +39 049 9335785 - metals@metals.it - www.metals.it