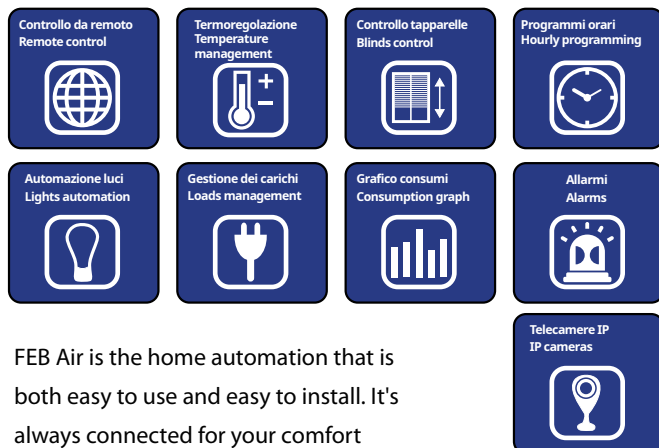




Easy and wireless home automation



FEB Air is the home automation that is both easy to use and easy to install. It's always connected for your comfort and your safety. Entirely wireless, you can install it where you prefer and you control it from your smartphone. With automations, sensors, temperature control and integrated IP cameras, you will always have your home under control.



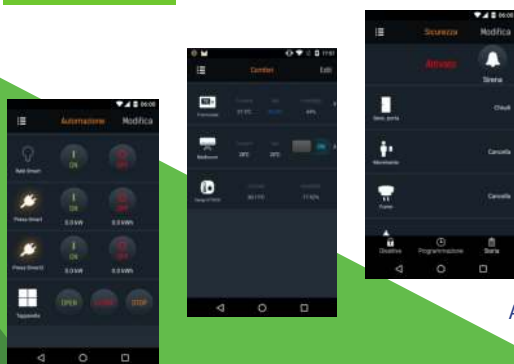
Automation

Comfort

Safety

With FEB Air you have everything you need to know that your home and your loved ones are safe, even when you are away from home.

IP cameras



App FEB Air



The best of both worlds

With FEB Easy you can have the best of both worlds: physical control of your devices, but no wires, no batteries, a smartphone app and integration with your favorite voice assistant, whether it's Alexa or Google Home. The technology behind the FEB Easy buttons makes them work without batteries and each control module can either be used as a standalone device or as part of a system. The convenience of FEB Easy is that it can be integrated in an existing traditional system, but with the added convenience of wireless controls and direct integration with voice assistants. Plus, the wireless controls for the Flexi series combine innovative technology with Italian design, making it ideal for any high end residential project.



WWW.FEBELETTRICA.IT

FEB Elettrica S.r.l.

Via Augusto Pollastri, 1 - 40138 Bologna (Italy)
T + 39 051.60.25.234 - F +39 051.53.44.12



Tradition and Innovation



Italian design and quality for wiring devices and home automation



WIRING DEVICES

FEB offers 4 different families of wiring devices that can meet the needs of every customer and be installed in every environment

flexi[®]
ELITE
PLAIN
BRIO
LIFE

The Flexi series has a sophisticated and elegant design and can be perfectly placed in the most qualified and refined environments. The same frames and devices accept different series of cover plates: Elite, Plain, Brio and Life, to allow the highest personalization of the rooms. The devices are available in three finishes: white, gray and TEC.



The TL - Tasto Largo series is perfect for those customers looking for products that are modern, safe and not expensive. The devices, frames and cover plates can be integrated in every environment, both private and commercial.



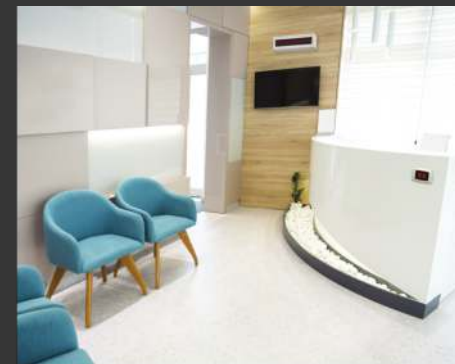
flat

The Lumina variant of these plates adds color and tridimensionality to a very refined product. The sophisticated design of this series is developed into a wide modular system that can satisfy all requirements from any installers.

The Flat series is modern and minimal, with clean lines. It is available in combination with the LINE plates, characterized by their straight and minimal lines.



The Laser series has a classic and minimal line that can be used for most of the installations in the private and public sectors. This family of modular devices can be used with the Click, Aluminum, Real Wood, Tocco and Tondò cover plates.



CALL BOARDS

The FEB call systems have been known for a long time for their robustness and convenience in hospitals, clinics, retirement homes, schools, hotels and many other applications. They can be digital up to 99 calls, or with LEDs or falling cards from 4 to 24 calls



DOOR BELLS

FEB Elettrica offers a broad range of electromechanical door bells, both with ringing sound or din-don and buzzers



TRANSFORMERS

The range of inductive single phase transformers offered by FEB Elettrica, from 15VA up to 63VA offers the best match for other FEB devices and for other applications.

BUSINESS INSTALLATION PRODUCTS

FEB offers a wide range of devices for installations such as office buildings, banks, hotels and so on. These devices are compatible with the Flexi series, to fulfill the requirements of even the most demanding projects.

