

# **METATECH GROUP**

## **FONDERIE**



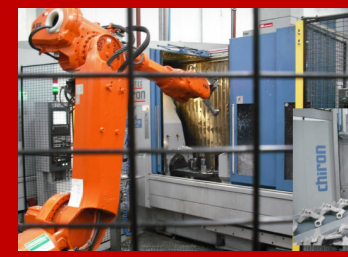
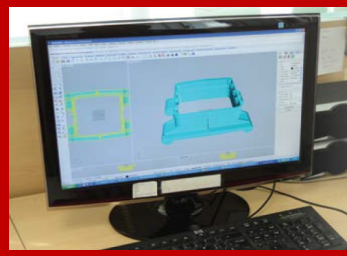
Qr code



**FOUNDRIES ALUMINUM in SAND - DIE GRAVITY - DIE CASTING**  
**From ideas/project to finished product quality ISO 9001**

Foundries qualified partner of companies that they confirm having advantages to work from ideas or existing products for:

<b>CUTTING</b> cost, stock, lead time and time to market	<b>IMPROVE LEVEL</b> qualitative and service
<b>PROJECT TECHNICAL</b> support	<b>ADVANTAGE</b> management supply chain
<b>CODESIGN and ENGINEERING</b> products/services	<b>INCREASE</b> competitiveness on the markets



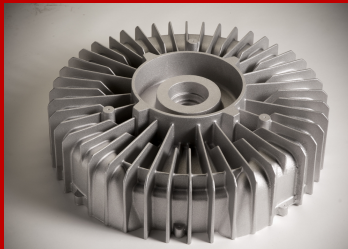
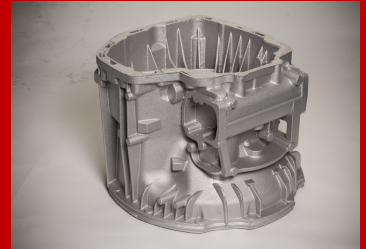
Contact us for analysis, evaluation, proposals for your:

- Aluminum in sand – die gravity and die casting**
- Aluminum castings machined**
- Prototype aluminum**
- Advisoring and engineering**

Also if existing patterns.

## FOUNDRIES ALUMINUM MARKET and PRODUCTION

Factory certified to the vanguard, modern and with experience have continuously invested in technological resources for offer to own customers collaboration, competitiveness, quality and support.



### **CASTINGS**

Partner of companies in automotive, actuators, compressors, explosion-proof, gear box, lighting system, motorcycle, plants distribution energy, valves.

### **ENGINEERING**

Co-design and technical support  
Development concept, products and process  
Prototypes and construction patterns

### **ADVISING**

Advising and technical training activities on materials, technologies, design, production, supply chain to customers and suppliers on various projects.  
In partnership with business and professional associations.

## FOUNDRIES ALUMINUM PLANTS and SERVICES

Factory certified and qualified from Customers.

Modern companies with experience have continuously invested in technological resources for offer to own customers competitiveness, quality and support.

For productions of prototypes to series in little, medium and large dimensions we have available:

### **AUTOMATIC LINES in SAND**

dimensions mm. 600x700 and 650x800 with robot

### **MECHANIZED LINES in SAND RESIN**

dimensions up to mm. 1500x1500

### **DIE GRAVITY ( also with core inside )**

max mm. 800x800 and weight kg. 20 cad. piece

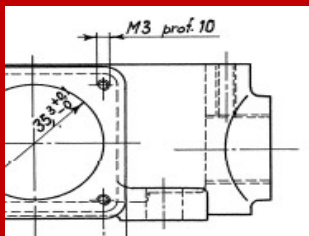
### **DIE CASTING**

max mm. 550x600 and weight kg. 1,5 cad. piece

### **CORE SHOP - FINISHING and LABORATORY**

Also in our core shop – furnaces – heat and superficial treatment and finishing department, the phases of the production processes / controls are carried out in factories, ensuring quality and timeliness.

We make quality control and mechanical tests in our laboratory ( quantometer durometer, traction, fluoroscopy, X-ray ).



### **SERVICES**

We supply the castings in any series, weight, dimension also:

Machined

Thermally treatments

Painted

Prototypes and series pieces machined on automatic C.N.C., manual machine from the idea, design or project in standard and special materials.

# **METATECH GROUP**

## **FOUNDRIES and MACHINING**

Viale Abruzzi, 13/A - 20133 - Milano ( Italy )

Phone + 39 02 87186877 – 02 40042916

Fax + 39 02 93664501 – 02 40043216



Qr code

Videomeeting skype metatechgroup

<http://www.metatechgroup.com>

e-mail [info@metatechgroup.com](mailto:info@metatechgroup.com)