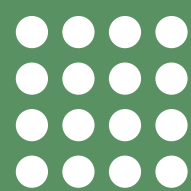


# ISOBELL

## THIN WALL LINING SOLUTION

The system designed for interior walls with mold and condensation problems.

MOLD & CONDENSATION RANGE





# WHAT IS ISOBELL

---

The material consists of a nonwoven fabric made from 100% recycled PET polyester, coated with a special water-based, flame-retardant synthetic compound. Certified and completely VOC-free (free from volatile organic compounds), it helps create healthier indoor environments.

The system improves the wall's thermal transmittance, blocks external moisture ingress, and prevents the formation of condensation within the structure. This makes it particularly suitable for the refurbishment and retrofitting of existing buildings with thermal bridges.

Thanks to ISOBELL's high breathability, the internal relative humidity is reduced while the wall's surface temperature increases. The dew point shifts inward or can even be eliminated, preventing surface condensation. Water vapor is able to migrate through the membrane and gradually disperse without accumulating.

The wall breathes, remains dry and warm, and effectively counteracts mold formation, improving living comfort and the overall quality of the indoor environment.

## WHAT MAKES IT UNIQUE

---

### Low Emissivity:

The value ( $\sim 0.6$ ) reduces heat loss compared to cement-based materials (emissivity  $>0.9$ )

### Increased Wall Temperature:

+4°C on average on surfaces coated with the thermal and breathable membrane

### Radiant Effect:

Enhances indoor comfort thanks to improved surface heat distribution

### Reduced Heat Loss:

Walls stay warmer for longer

### Energy Savings:

Up to 35% reduction in energy consumption for both heating and cooling

**ISOBELL is a patented thermal insulating vapor control membrane that solves mold and condensation problems.**

### IT REDUCES HEAT LOSS AND SAVES ENERGY.



This system acts as a THERMAL BARRIER and helps increase the energy efficiency of a standard non-insulated wall.

### LEVELS OUT THERMAL BRIDGES AND PROTECTS AGAINST MOLD.



By increasing the surface temperature, it is the best solution to prevent moisture condensation.

### EXCELLENT BREATHABILITY FOR IMPROVED INDOOR COMFORT.



The  $S_d$  value (m) is 0.27. Thanks to its high breathability, the material can regulate the relative humidity in indoor environments.

### STABILIZES THE WALL'S INTERNAL MICROCLIMATE.



Eliminates the dew point and, consequently, condensation formation, resulting in a healthy, thermally balanced, and condensation-free wall.

### INTEGRATED ANTI-MOLD AND ANTI-ALGAE ACTION.



The products are formulated with specific additives that inhibit the growth of mold, algae, and bacteria, even in humid or poorly ventilated environments.

# INDOOR LIVING COMFORT



CE CAM



ISOBELL - Waterproof and breathable thermal membrane made of 100% recycled polyester, coated with a synthetic compound, VOC-free.

## SPECIFICATIONS

Thermal conductivity (W/mK)	0,037
Emissivity	0,59
Density (kg/m <sup>3</sup> )	140
Fire resistance	classe E
Thickness (mm)	5,5+10%
Operating temperature (°C)	- 40/+80
Water vapor transmission Sd (m)	0,27
Mold resistance	alta
Pull-off strength (N/cm <sup>2</sup> )	30

The results were obtained through certified and standardized tests carried out at authorized and accredited external laboratories for testing building materials and components.

## PURE +



Fungicidal biocide



Sanitizing cleaner effective against germs as well as mold, algae, and fungi, also suitable for situations with a risk of microbial contamination.  
Ready-to-use product.

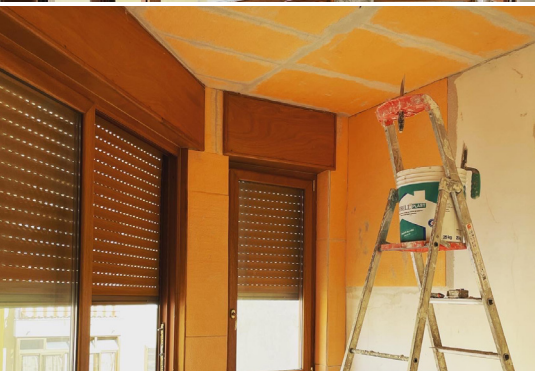
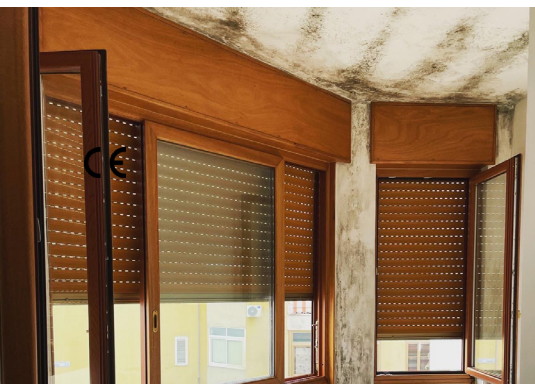
## KLIMA



Adesivo rasante



Acrylic adhesive and skim coat, ready-to-use paste, ideal for application as a solution to **PREVENT CONDENSATION** system, for interior use in 0.5 mm grain size. Enriched and lightened with perlite. It can be applied to all types of plaster as well as to the surfaces of any type of building component.





**Manifattura del Seveso S.p.A**  
Via Vespucci, 20 — 24046 Osio Sotto (BG)  
T: +39 035 881950 — [info@isobell.it](mailto:info@isobell.it)

**MADE IN ITALY**