

XNOOVA

Remote Display Management

Designed for interactive display



Ministry of Foreign Affairs
and International Cooperation



Italian Tech Startups
@CES2021

Remote Display Management

With Chimpa RDM you can manage, monitor, diagnose and remotely support Android-based interactive displays. With just a two-step procedure, you can enroll the device in your managing account.



Content and App distribution



Digital Signage Lite and single-app mode



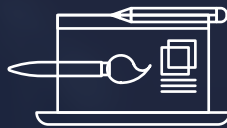
Profiles and restriction manager



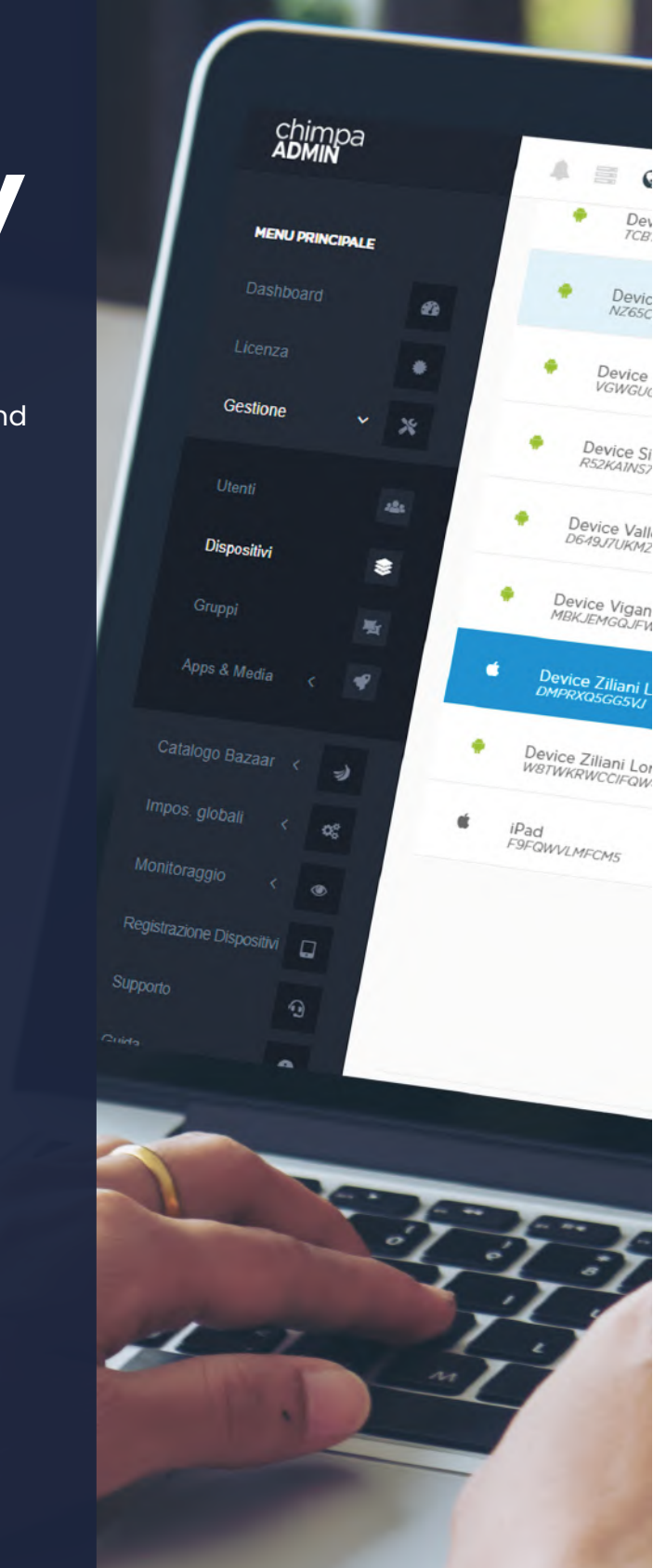
Remote monitoring and maintenance



Act directly on device firmware



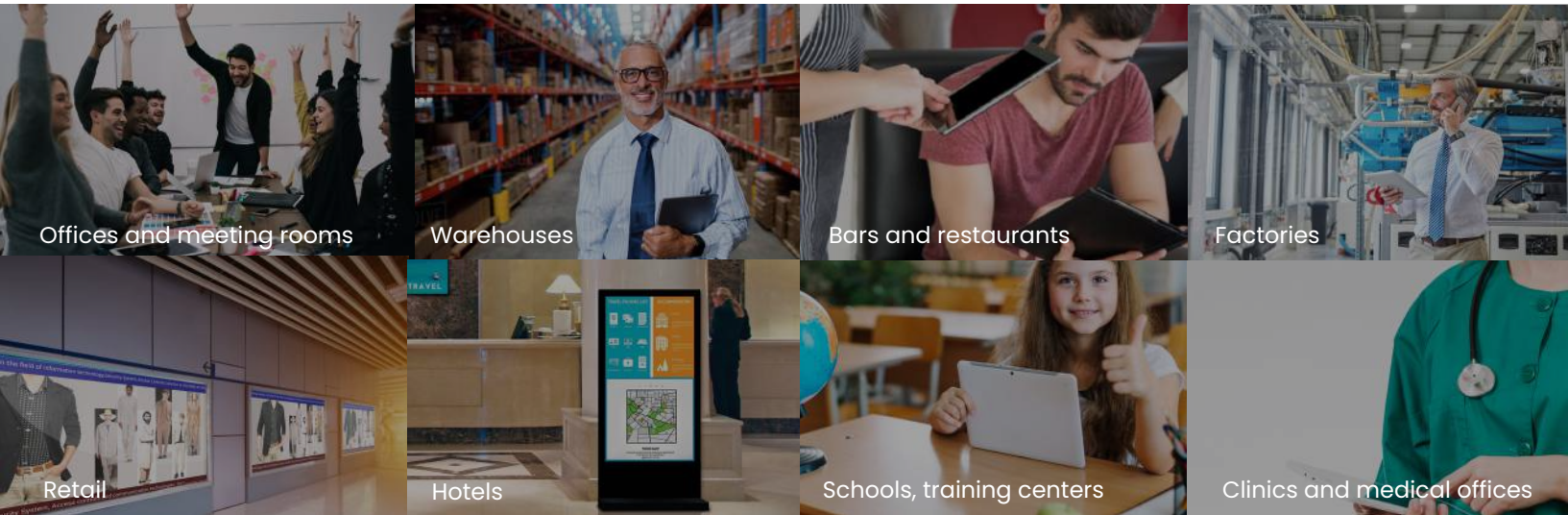
Custom administrator panel



chimpa

In which areas managed interactive displays can be used

Chimpa RDM is a remote display management solution developed specifically for interactive displays. Thanks to its advanced features and versatility, Chimpa RDM can be used in various areas of use:



What are the main features of Chimpa RDM?

Content and App distribution



With Chimpa you can distribute apps and contents, private APKs, settings and updates from a single browser interface. You can download directly from official stores within Chimpa Admin Panel or use your own Cloud repository, such as Google Drive, Dropbox or OneDrive. With just a few steps you can easily send to all your devices, or just a restricted group, your personal media content or a specific application.

Profiles and restriction manager



Chimpa can manage user profiles, guest profiles and even single restriction plans based on single devices or specific time schedule. This avoids any improper usage of the device. Chimpa also adds an upgraded level of security for your work data – in compliance with latest GDPR European rules.

Digital Signage Lite and single-app mode



With Chimpa the interactive display can be locked on a specific welcome message for your school/corporation, or putting it in Kiosk Mode so only a specific application is displayed.

Remote monitoring and maintenance

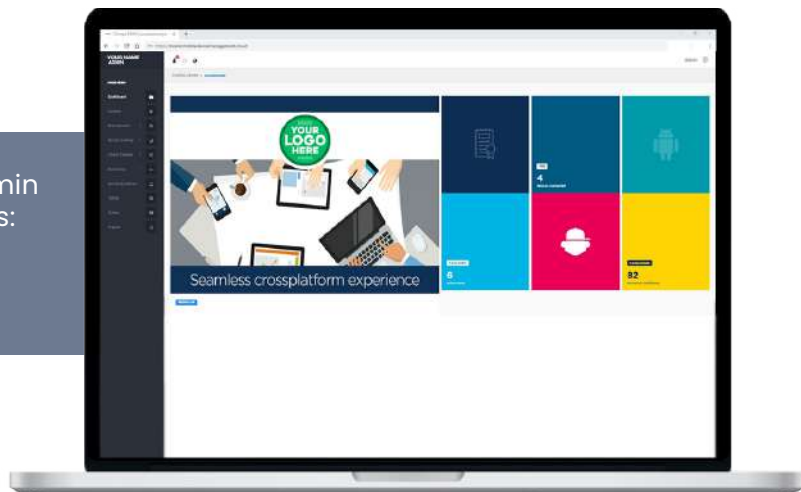


Chimpa RDM can remotely monitor and keep record of all your hardware and software efficiency, sending alerts when something's not working as expected. Also, with the Remote Input Command section, you can interact with the interactive display as you're physically there: this means a completely remote assistance and maintenance service.

With Chimpa RDM you can also view from the Admin Panel what's the interactive display showing in real time and take control of it, with graphic input interface.

Why should you integrate Chimpa RDM on your interactive displays?

The administrator panel gives the IT Admin a full control over all the Android devices: interactive displays, smartphones and tablets.



What can you do with Chimpa RDM features?

- ✓ Install apps and contents (Google Play and APK) and monitor your devices remotely from a browser based page
- ✓ Remote view and control screens in real time
- ✓ Send alerts on your devices (full screen message, window, notification...)
- ✓ Schedule operating system update and maintenance
- ✓ Start, reboot or shutdown your device remotely from your admin panel
- ✓ Fix a web site or an App on the device screen (digital signage lite)
- ✓ Interact with vendor SDK/API and act directly on device firmware
- ✓ Select which video source to use (HDMI/VGA/PC/OPS) directly from your Admin panel
- ✓ Customize your RDM with your logo and company name
- ✓ Control every kind of devices (interactive display, tablet, smartphone, digital signage...) from one platform

All - Round

Chimpa allows you to have full control of your organization's devices.

User-Friendly

Chimpa has a clear and intuitive cloud interface, suitable for users of every level.

Budget-Friendly

Compared to alternative solutions, Chimpa offers you more at a very advantageous price.

Customizable

Chimpa is a modular solution, that you can configure according to your needs.

Certified

The developer company of Chimpa is Google For Work Partner, Android Enterprise Validated, Samsung Knox Validated.

Easy Enrollment

Xnoova is the only Italian company that can offer you a complete package for your devices in just a few taps.

The advantages of having a managed interactive displays

You can act directly on the interactive display remotely, managing to carry out technical operations such as: installing applications, sending commands, using the remote control

You can pin an application or a website in the foreground in order to reproduce a Digital Signage Lite

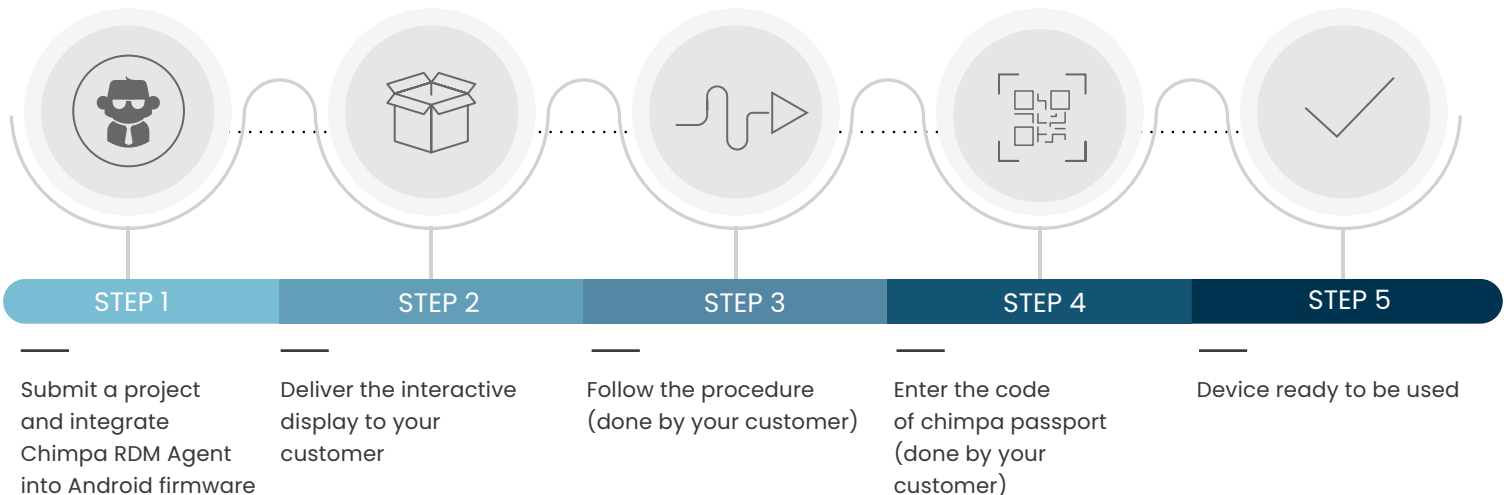
You can control all your interactive displays and other devices from a single control panel, performing actions on a single device or several devices

You can remotely send to interactive displays alerts containing images, videos and text

You can see exactly what is displayed on the interactive display screen



Your interactive display managed in just 5 steps



Wouldn't it be nice to have a custom administrator panel?

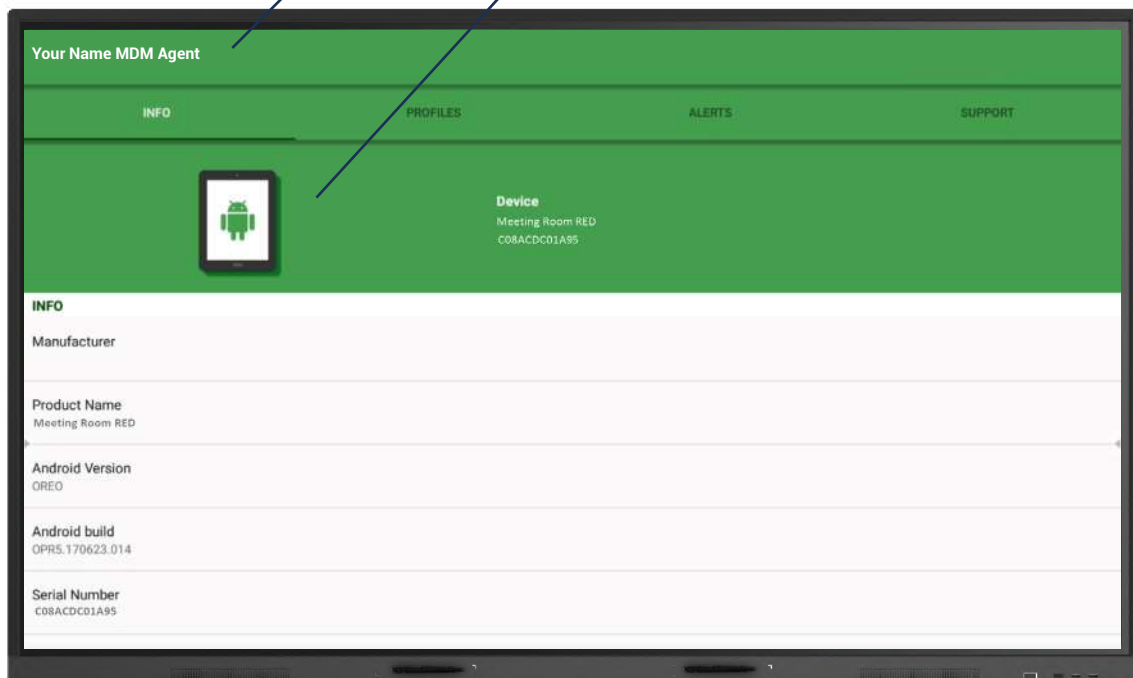
Now it's possible, find out how...

The login URL will be customized with the brand name and logo

<https://yourname.mobiledvicemanagement.cloud>



With **white label** you can customize also Chimpa Agent icon, the name of the Agent and the color. Make the Chimpa Agent part of your brand guideline!



Everything you need in one license

With Chimpa RDM you have all you need enclosed in just one license, all you have to do is to integrate the solution into your firmware. Inside Chimpa RDM you can find the following modules:

EASY

The basic Chimpa module includes all the functions related to registration and configuration of devices relating to the Chimpa Agent. Common to all license types, it guarantees correct functioning, interfacing with the various operating systems, synchronization and the most important information search functions on the device, e-mail notifications, direct actions on the devices and creation of profiles, that allow the capillary control of all the functions of the device itself.

STANDARD

It includes some Single Sign On (SSO) features, such as whether or not to restore factory settings, the installation and removal of certificates and some features related with the creation of profiles (feature that allows the timely control of the devices managed by Chimpa) such as: forcing the WiFi to turn on, allowing personal applications, network settings.

ADVANCED

The module is designed to offer management tools focused on productivity. It allows authentication through Single Sign On on different platforms, direct actions on the video options of the device, access to the list of operating system updates and related programming, the possibility to send and remove files of various formats directly on the device, to set the volume of the device remotely, to manage the startup and shutdown of any OPS module, to lock the screen, the possibility to set a wallpaper and to program the startup and shutdown of the device.

MAM

The Mobile Application Management module allows you to distribute and manage applications, resources contents and the related licenses massively. It also contains the functions related to the Bazaar catalogue: Chimpa official store, in which the organization itself decides which content to include and make available to users.

ANALYTICS

If your need is related to safety management, maintenance and the collection of device usage data, this module is a fundamental work tool. In fact Analytics allows to monitor the device, access applications usage data, visited domains, data related to hardware and security access.

REMOTE SUPPORT

The module is designed for remote viewing and interaction with the device screen, it allows you to share the display directly on the administrator's browser. The administrator will be able to act directly on the device despite being far from the device itself. This module is fundamental for simple technical assistance actions or when you have to check many devices located in different locations.

What types of devices can you manage with Chimpa?

The field of application is extremely wide, since you can use Chimpa to manage digital signage, room booking, single purpose devices and interactive displays.



INTERACTIVE DISPLAY: large format flat panels with interaction



ROOM BOOKING: devices for booking meeting rooms



DIGITAL SIGNAGE: kiosk, totems and large format flat panels



MOBILE DEVICES: smartphones and tablets



SINGLE PURPOSE DEVICE: industrial tablets, bar-code readers, warehouse terminals etc.

Choose the license that best suits your needs

You can also choose which license type to include on your interactive display depending on the turn-over and preferences of your customer.

It is possible to choose parts of the licenses with annual or three-year duration and part without expiration even for the same customer. Just choose what you want to have and Chimpa will respond to your needs.

Multi-year

(Annual or multi-year subscription license)

Recommended if your organization has a high device turnover, as licenses can be reassigned.

1 Year



3 Years



Lifetime

(Perpetual license)

Recommended if your organization has a low device turnover, as every license is associated with a single device permanently.

Lifetime

