

ELEVA TORI

TECHNICAL

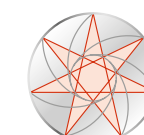


Metal Working srl®
quando il metallo prende forma



CONTENTS

Technical characteristics of our lines	p. 5
F1 Line	p. 6
Discovery Line	p. 8
F2 and F5 Lines	p. 10
F10 Line	p. 12
Elegant Line	p. 14
Properties and general features	p. 16



Metal Working srl[®]
quando il metallo prende forma

TECHNICAL CHARACTERISTICS OF OUR LINES: F, DISCOVERY, ELEGANT



	F1 LINE	DISCOVERY LINE	F2 LINE	F5 LINE	F10 LINE	ELEGANT LINE
* Thickness of Structure (mm)	50 - 40 - 30	51,5	51,5-44	55 - 46	70 - 50	60 - 70
Shaft for indoor	✓	✓	✓	✓	✓	✓
Shaft for outdoor	✗	✓	✓	✓	✓	✓
RAL painting	●	●	●	◻	●	●
Shaft cladding with steel	◻	✗	✗	✓	◻	◻
Cladding with framed glass	✓	✓	✓	✓	✓	✗
Cladding with Point-fixed glass	✗	✗	✗	✗	✗	✓
Cladding with standard panels	✓	✓	✗	✗	✓	✓
Cladding with sandwich panels	✓	✓	✓	✓	✓	✗
Shaft-cladding with internal smooth effect	✓	✓	✓	✓	✗	✗
Shaft-cladding with external smooth effect	◻	Standard panels only	✗	✗	✓	✓
Cladding installation from inside of the shaft	✓	✓	✓	✓	✗	✗
Cladding installation from outside of the shaft	✗	✗	✗	✗	✓	✓
Vertical beams casing	◻	◻	◻	◻	◻	◻
Horizontal beams casing	◻	●	●	●	◻	●
Glass-holder profiles visible in mirroring	✓ (In view)	✗	✗	✗	✓ (Transom)	✗

Glossary:

✓ Yes

● Standard

◻ Optional

✗ Not Available

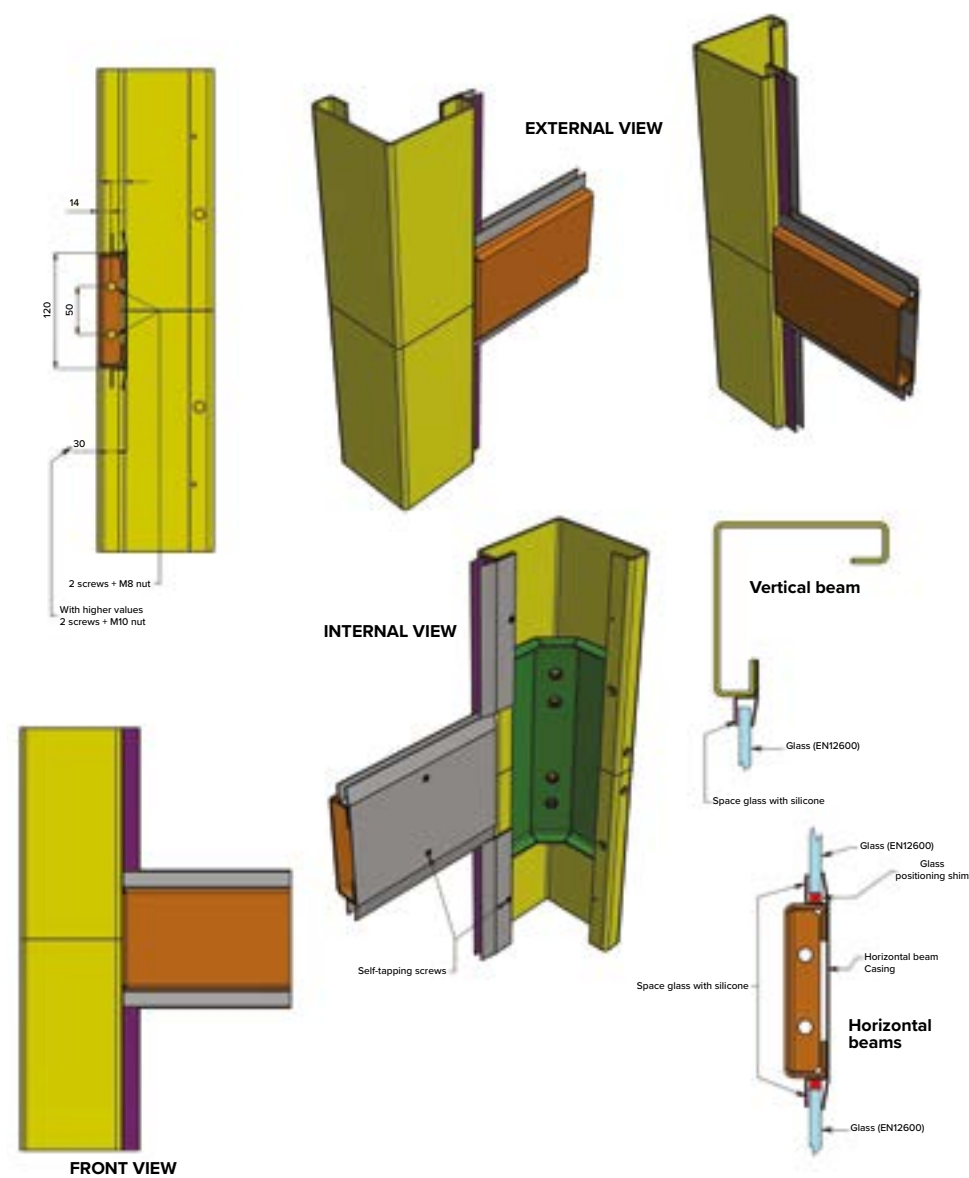
NOTE: All steel shafts for outdoor are produced in hot galvanized steel in different thicknesses. Optional for indoor.

* The thickness of the horizontal-beams on the mechanic side may change depending on the lift forces.



F1

LINE



NOTES:

We remind you that sealing of all types of cladding and joints between the different parts of the shaft is mandatory in case of shaft explosion to the atmospheric agents, in order to guarantee the protection degree.



THICKNESS:
50 - 40 - 30 mm

TYPE OF INSTALLATION:
Indoor ONLY

CHARACTERISTICS:

- Cladding installation from inside of the shaft
- Shaft-cladding with internal smooth effect standard (on the outside, a 90° angle will be formed between the glass and the horizontal-beam, with an offset of variable size depending on the thickness of that part)
- On request, glass sheets can be positioned creating the external smooth effect (on the door front, if necessary, extra cladding can be added to ensure the internal smooth effect)

PROS:

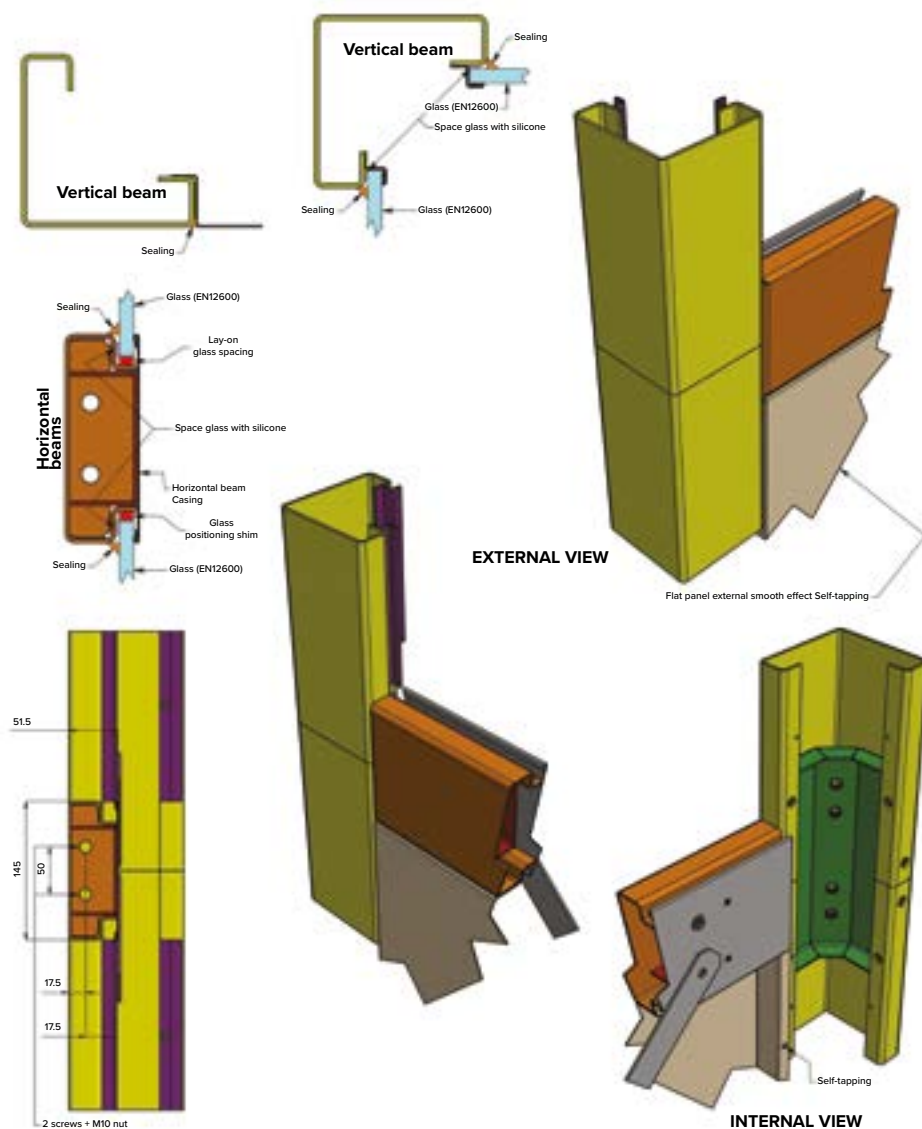
- Flexible and adaptable to small spaces
- Reduced structure thickness (with adequate anchorages)
- Possible choice between standard panels, sandwich panels and glass

TO CONSIDER:

- Accurate assembly
- The glass holders are visible in mirroring
- Structure available only for indoor installation

DISCOVERY

LINE



NOTES:

We remind you that sealing of all types of cladding and joints between the different parts of the shaft is mandatory in case of shaft explosion to the atmospheric agents, in order to guarantee the protection degree.



THICKNESS:
51,5 mm

TYPE OF INSTALLATION:
Indoor and outdoor

CHARACTERISTICS:

- Cladding installation from inside of the shaft
- Shaft-cladding internal smooth effect with glass and sandwich panels (on the outside, a 90° angle will be formed between the glass and the horizontal-beam, with a 35 mm offset)
- On request, casing can be applied to conceal the vertical beams

PROS:

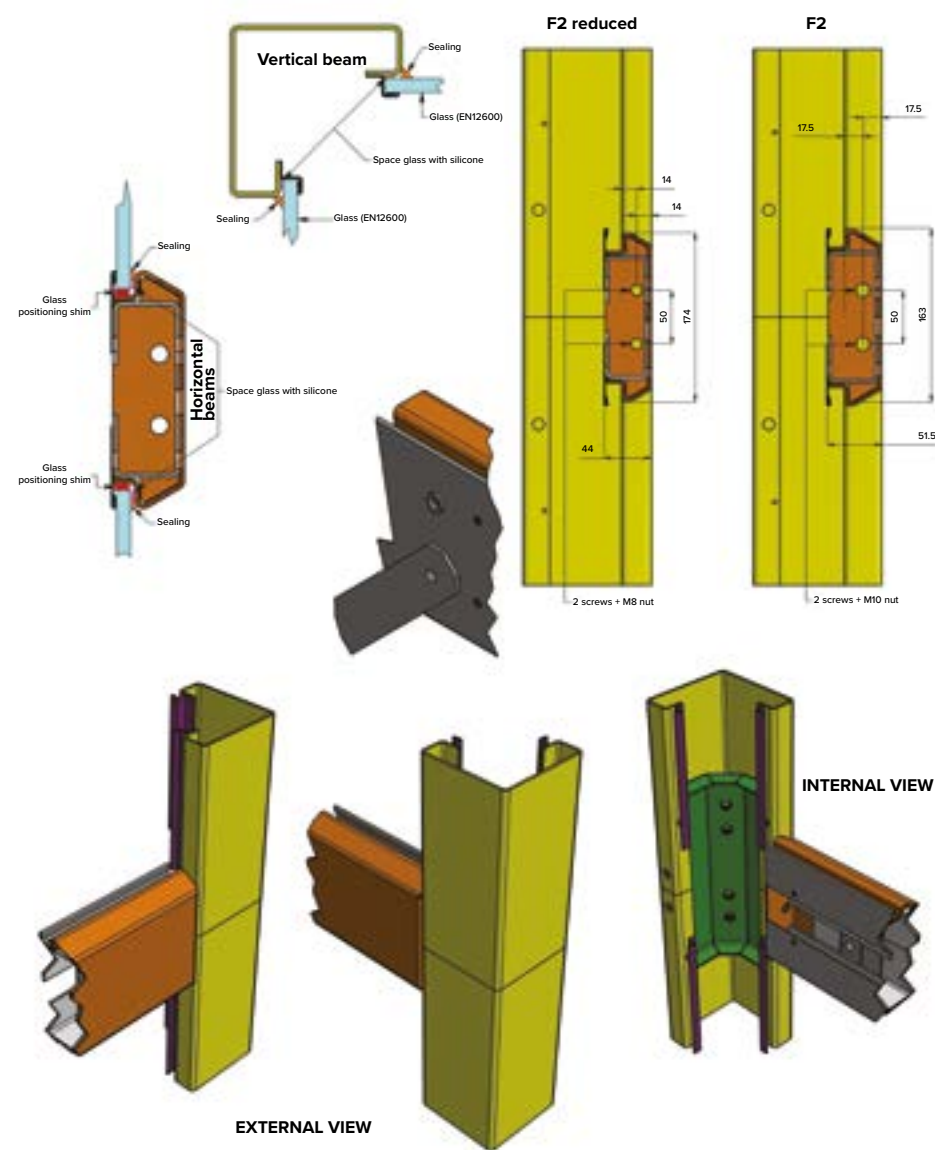
- Speed of installation
- Possibility of installation both for indoor and for outdoor
- Possible choice between standard panels, sandwich panels and glass

TO CONSIDER:

- Inalterable structure thickness

F2 and F5

LINES



NOTES:

We remind you that sealing of all types of cladding and joints between the different parts of the shaft is mandatory in case of shaft explosion to the atmospheric agents, in order to guarantee the protection degree.



THICKNESS:

51,5 mm and 44 mm (F2)
55 mm and 46 mm (F5)

TYPE OF INSTALLATION:

Indoor and outdoor

CHARACTERISTICS:

- Cladding installation from inside of the shaft
- Shaft-cladding internal smooth effect (on the outside, a slanted angle will be created between cladding and the horizontal-beam)
- On request, casing can be applied to conceal the vertical beams. The F5 structure is always cladded

PROS:

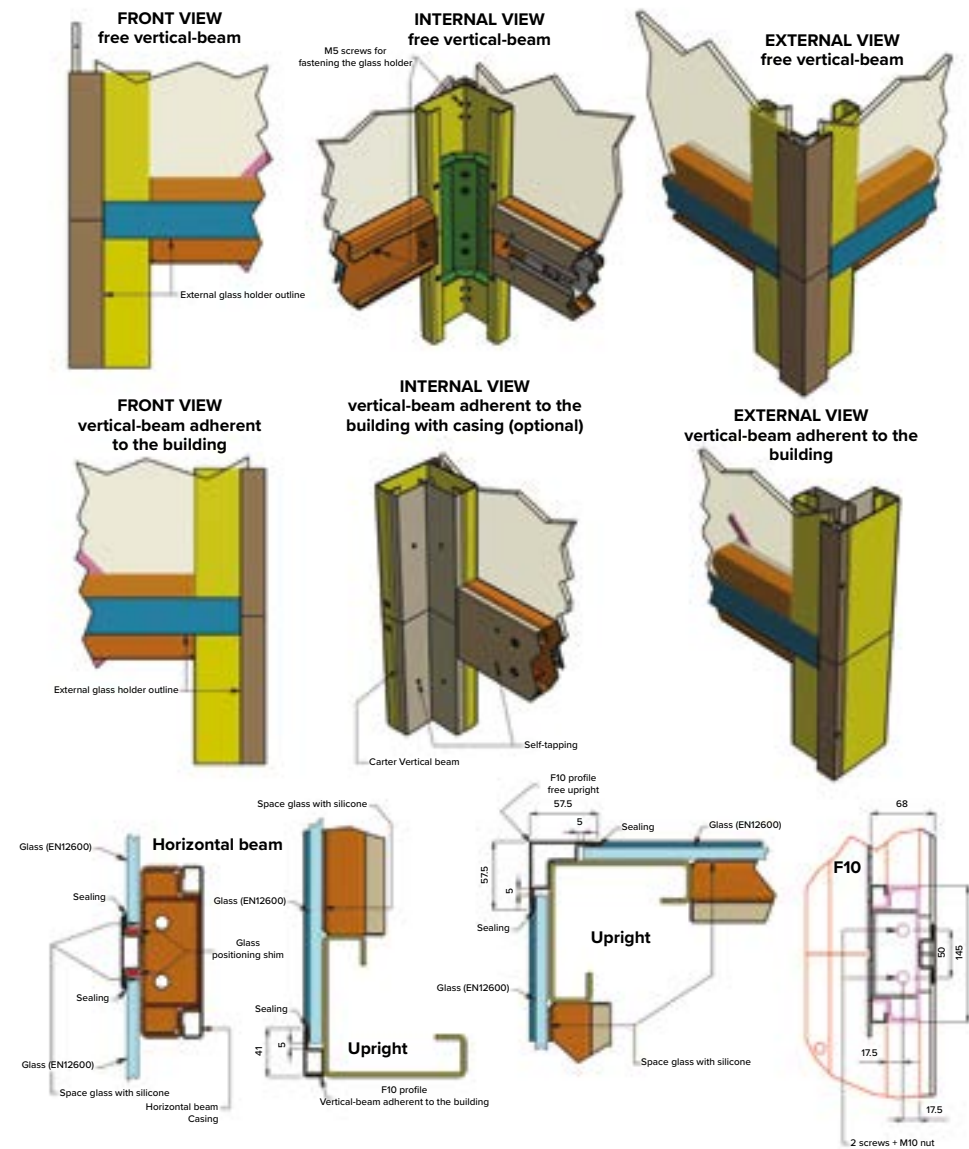
- Speed of installation for both indoor and outdoor
- In the F5 version, the structure can be cladded with different types and finishes of steel
- Possibility of choice between sandwich panels and glass
- The slanted profile of the horizontal-beams ensures that water and snow will not accumulate

TO CONSIDER:

- Reduced thickness only for indoor installations
- Cladding with standard panels not available

F10

LINE



NOTES:

We remind you that sealing of all types of cladding and joints between the different parts of the shaft is mandatory in case of shaft explosion to the atmospheric agents, in order to guarantee the protection degree.



THICKNESS:

70 mm - 50 mm



TYPE OF INSTALLATION:

Indoor and outdoor



CHARACTERISTICS:

- Cladding installation from outside of the shaft
- Shaft-cladding external smooth effect with minimal vertical and horizontal glass holder $h = 60$ mm
- On request, casing can be applied to conceal vertical-beams and horizontal-beams



PROS:

- Highly effective esthetic finishing
- The structure can be cladded with different types and finishes of steel
- Possibility of choice between standard panels (smooth effect with vertical-beams and horizontal-beams) and sandwich panels (which will be positioned in place of the glass)

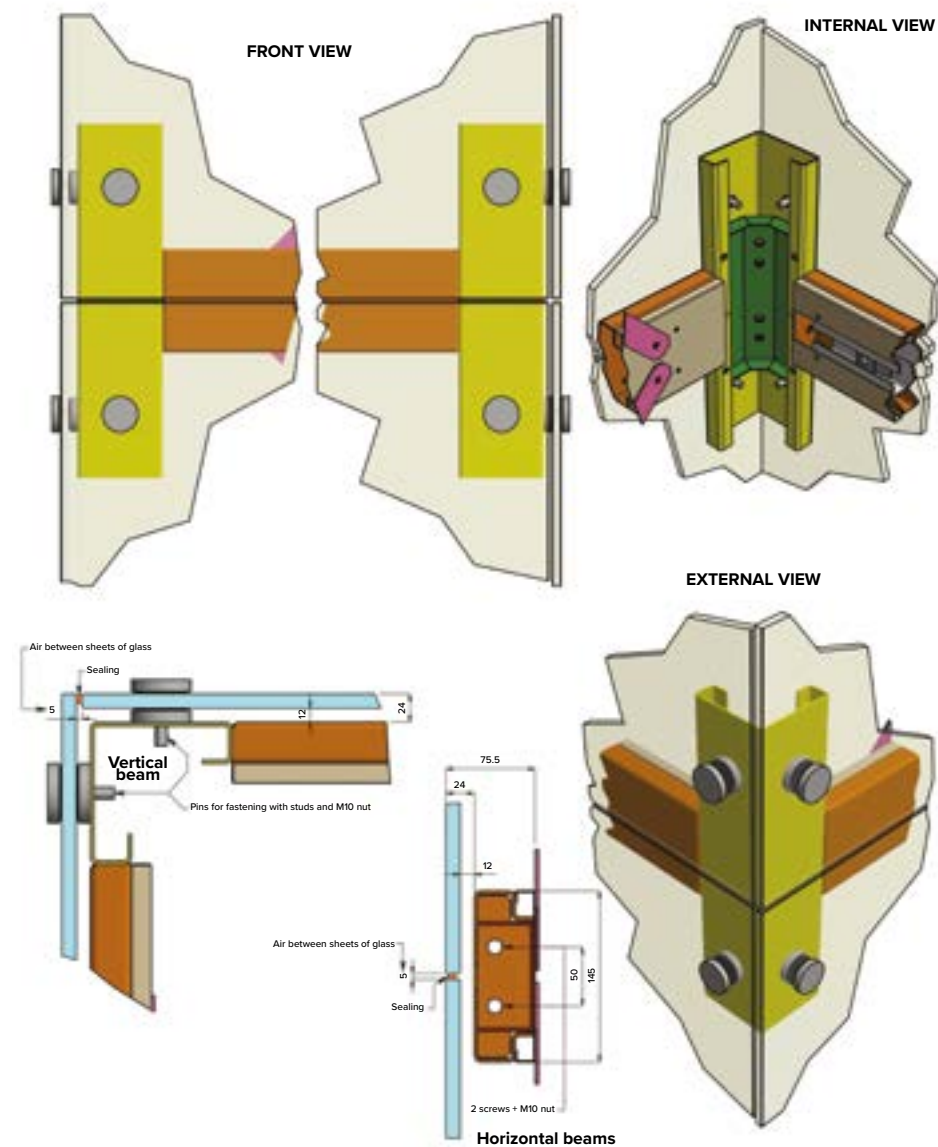


TO CONSIDER:

- Reduced thickness only for indoor installation
- With transparent glass the internal profile of the glass-holder is visible

ELEGANT

LINE



NOTES:

We remind you that sealing of all types of cladding and joints between the different parts of the shaft is mandatory in case of shaft explosion to the atmospheric agents, in order to guarantee the protection degree.



THICKNESS:

60-70 mm

TYPE OF INSTALLATION:

Indoor and outdoor

CHARACTERISTICS :

- Cladding installation from outside of the shaft
- Shaft-cladding with external smooth effect, fastened with stainless steel studs
- On request, casing can be applied to conceal vertical-beams and horizontal-beams

PROS:

- Speed of installation, highly effective esthetic finish
- The structure can be painted in RAL colors, or cladded in steel of various types of finishes
- Continuous exterior wall without visible glass fasteners

TO CONSIDER:

- For outdoor installation, adequate sealing between crystal glass panels is necessary
- Absence of internal smooth effect on the door side (double cladding can be requested to achieve this)

MM

PROPERTIES AND GENERAL FEATURES

- If the structure is anchored to at least 3 uprights every 4500 mm, no stiffening will be necessary (full panoramic mirroring). If not, it will be necessary to equip the structure with flat cross bracings or steel strings.
- Standard RAL finish: smooth semi-gloss. Gloss 60. Polyester Powders. For more finishes, it is possible to request feasibility and costs.
- Possibility of supply of floor door wings and complete façade doorframe (instead of the frame and door side panels).
- For MRL installations: possibility of supply of beam and hooks in headroom.
- Bridges, handrails and/or complete façades can be supply to close the landings.
- A wide range of accessories can be supplied, such as: Eaves and gutters in RAL colors, angle profiles between structure and building, closing profiles in pit, etc.
- For Elegant line: it is possible to supply punctual fixing glass with different kind of fasteners such as “spider” studs, “stratified” studs (smooth glass on the outside) and visible loops.
- The thickness of the beams on the guide sides will have to be sized appropriately according to the loads of the lift plant.
- Specially designed vertical-beams and horizontal-beams of reduced size are feasible on models that permit their use (except Discovery) but always subject to verification by our Technical Office.
- For particular requests and/or plants with high capacity, it is possible to supply shafts in steel carpentry appropriately sized. For requests of fire-resistant structures, the carpentry can be painted with special intumescent paint.



quando il metallo prende forma

Version 1.0

This brochure, the relative graphics and pictures published are the exclusive property of Metal Working Srl and are protected according to the legislation in force on the subject of copyrights and industrial property. Any copying, reproduction, redistribution and in general any unauthorized use - even partial - of the content and illustrations, in any form, without the express written authorization of Metal Working Srl is strictly prohibited.

Edited in cooperation with: Riccardo Arese, Alessandro Arosio



F LINE

Oslo, Norway



DISCOVERY

Vicenza, Veneto



DISCOVERY SPECIAL

Selva Valgardena, Trentino Alto Adige



ELEGANT

Roma EUR, Lazio



Metal Working srl®
quando il metallo prende forma

METAL WORKING SRL

Viale Dante, 300 - c/o BIC - Business Innovation Center
I-38057 Pergine Valsugana TN - Italy

Telefono +39 0461 531398 - Fax +39 0461 539144

info@metalworkingweb.com
www.metalworkingweb.com