



Company Profile

VISION and MISSION

**Caffè Duetto is the Italian coffee good for HEALTH,
because naturally rich in ANTIOXIDANTS and with a very low natural content of CAFFEINE!**

On the market there are mostly espresso coffees that on the palate are BITTER, HARD, many times even UN-DRINKABLE and which, due to excessive caffeine, produce NEGATIVE EFFECTS on HEALTH (such as PALPITATIONS, GASTROINTESTINAL DISORDERS, DIARRHEA, INSOMNIA, ULCERS). And consumers are increasingly careful.

In this market, Caffè Duetto is an EPOCHAL EVOLUTION for the world of Italian espresso.



NUTRITIONAL CERTIFICATIONS

- **ANTIOXIDANTS:** Natural content: up to 620 mg/l cup (7gr)
Highest value found in comparison with other brands on the market (Laboratory Analysis)

- **CAFFEINE:** Very low natural content: up to 1.2% (top line)
Absolutely lowest value among those declared by the Italian coffee brands on the market

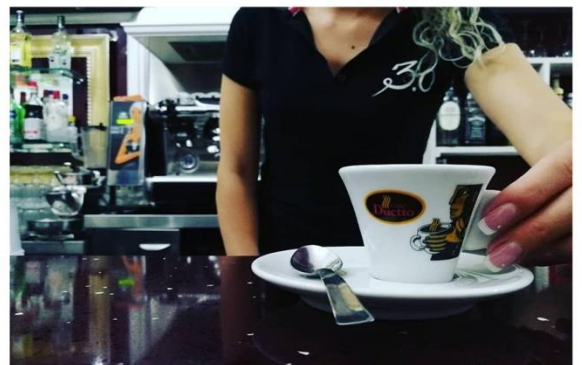


PACKAGING AND IMAGE

- 100% Multilingual Packaging: English, Chinese, Russian, Arabic, Italian.
- Indication on the label of the Antioxidant Power
- Indication on the label of the Caffeine Content
- Nutritional information on the label on the correct consumption of coffee from accredited scientific sources (such as efsa)
- International brand

COMPANY

- DUETTO is a production (roasting) and marketing company
- Production site based in Apulia (Italy)
- Processing of only Mild Coffee blends
- Advanced technology with new generation computerized roasting plant
- Production potential of 8000 kg per day



MILD ROASTED COFFEE BEANS

لوفال ي ف ةصم حم ل قول ح ل ةوهق ل / 甜味烤咖啡豆 / Сладкий кофе, обжаренный в зернах.





1,7%
CAFFEINE/КОФЕИН
ن ي ي ف الك ل / 咖啡 因



1,2%
CAFFEINE/КОФЕИН
ن ي ي ف الك ل / 咖啡 因



| PRODUCT | | | | | | DESCRIPTION | |
|--------------|---|--------|-----------------------------|-------------------------------------|-------------------------------------|--|---|
| COD. | PACKING | KG | CT X USA PALLET | PRODUCT NAME | | | |
| COFFEE BEANS | COFFEE BEANS IN TRIPLE FILM COUPLED | | | | | | |
| |  | 101010 | CT | 6 PIECES 1 KG EACH | 80 TOT 480 PIECES EACH PALLET | GRAND CAFFE' DUETTO - FIRST LINE - | MILD blend of roa- sted coffee beans, composed of 7 types of Central American, Asian and African coffee. Caffeine content: 1.2% |
| | NEW | CT | 12 PIECES 500 GR EACH | 80 TOT 960 PIECES EACH PALLET | | | |
| |  | 102010 | CT | 6 PIECES 1 KG EACH | 80 TOT 480 PIECES EACH PALLET | AGORA' 3 BLENDS ARMONIA GRAN GUSTO GRAN CREMA - SECOND LINE - | MILD blend of roa- sted coffee beans, composed of 7 types of Central American, Asian and African coffees. Caffeine content: 1.7% |
| | NEW | CT | 12 PIECES 500 GR EACH | 80 TOT 960 PIECES EACH PALLET | | | |



MILD ROASTED GROUND COFFEE

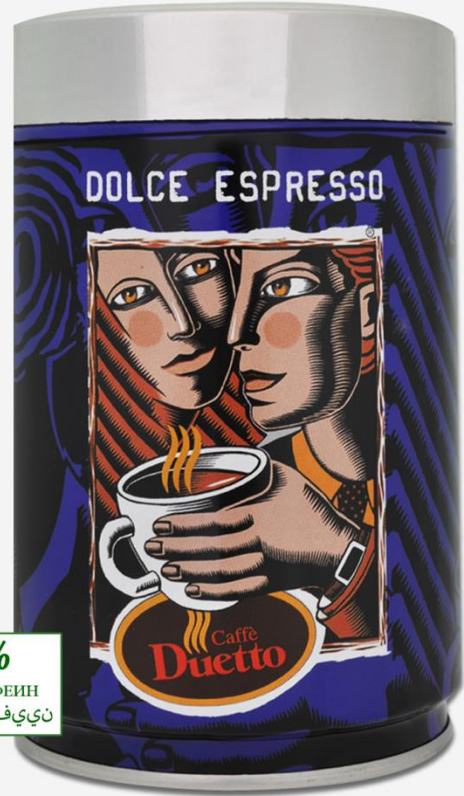
قصة مالم قول حل ةوهق لال / سلاكي كوفه / سلاكي كوفه





1,2%
CAFFEINE/КОФЕИН
كافيين/الني



1,2%
CAFFEINE/КОФЕИН
كافيين/الني



| | | PRODUCT | | | | DESCRIPTION | |
|---------------|---|---------|---------|--------|---------------------------------------|-----------------------------------|--|
| | | COD. | PACKING | PIECES | CT X USA PALLET | | PRODUCT NAME |
| GROUND COFFEE | GROUND COFFEE FOR MOKA | | | | | | |
| |  | 103030 | CT | 24 | 60 TOT 1440 JAR EACH PALLET | BLUBAR - 250 GR - | MILD coffee blend composed of 7 types of central American, Asian and African coffee. Caffeine content 1.2%. 250g lithographed aluminum jar with Nitrogen, easy open opening and screw-on aroma plug. |
| |  | 103020 | CT | 50 | 80 TOT 4000 BAGS EACH PALLET | SMART 125 - 125 GR - | MILD coffee blend composed of 7 types of central American, Asian and African coffee. Caffeine content 1.2%. Packaged in an elegant 125 gr saving freshness box with Nitrogen. |



MILD ROASTED COFFEE IN PODS or CAPSULES

عصم حمال ؤول حال ؤوهق لال / ؤمءل ؤول / ؤمءل ؤول / ؤمءل ؤول



1,2%
CAFFEINE/КОФЕИН
نئف الكال / ؤمءل ؤول



1,7%
CAFFEINE/КОФЕИН
نئف الكال / ؤمءل ؤول



1,7%
CAFFEINE/КОФЕИН
نئف الكال / ؤمءل ؤول





ANTIOXIDANTS
антиоксидантов / 抗氧化剂
قءسكال ؤاءاضم
up to **554mg**
7 gr



PODS
44 MM



ESPR.POINT
FAP CAPS.



A MODO MID
CAPS.






NESPRESSO
CAPS.



DOLCE GUSTO
CAPS.



COFFEE PODS or CAPSULES

| PRODUCT | | | | | | DESCRIPTION | |
|---|---|---------|---------------|-------------------------------|-------------------------------|--|--|
| COD. | PACKING | PIECES | CT USA PALLET | PRODUCT NAME | | | |
| COFFEE PODS INDIVIDUALLY PACKAGED | | | | | | | |
|  | 0206010 | BOX | 150 UNITS | 100 BOX | ESPRESSO GOURMET | light flavor, aromatic легкий вкус, ароматический 淡淡的味道, 芳香 دي رطع ، ةفي فح ةهكن | |
| | 0206015 | BOX | 25 UNITS | 420 Box 35ct 12box each | | | |
| |  | 0206020 | BOX | 150 UNITS | 100 BOX | ESPRESSO ITALIANO | intense, balanced богатый и сбалансированный 强烈, 平衡 ةنزاوتمو ةفثكم |
| | | 0206025 | BOX | 25 UNITS | 420 Box 35ct 12box each | | |
| |  | 0206030 | BOX | 150 UNITS | 100 BOX | ESPRESSO DEK | decaffeinated coffee Кофе без кофеина 无咖啡因的咖啡 نييفالكلا ةعوزنم قوفق |
| | | 0206035 | BOX | 25 UNITS | 420 Box 35ct 12box each | | |



DUETTO SPECIALTIES



| | | PRODUCT | | | | | DESCRIPTION |
|-----------|---|---------|---------|---------------------------------------|---------------|--------------|---|
| | | COD. | PACKING | PIECES | CT USA PALLET | PRODUCT NAME | |
| SPECIALTY | SPECIALTY | | | | | | |
| |  | 105010 | CT | 6 BOTTLES | 60 | H24 | Correct Liqueur Coffee in an elegant 70 cl bottle, with a low alcohol content (26% vol), an intense aroma and a soft taste. |
| |  | 105030 | CT | 7 EXPOSIT. 24 PIECES EACH | 36 | KIKICIOK | Sweet Duetto Coffee Beans covered in fine Suchard chocolate, packed in convenient pocket cases. Packing Counter Display - 24 boxes of 25 grams each |



HEALTH FRIENDLY COFFEE

C E R T I F I C A T E D

CAFFEINE

MINIMUM
VALUE **1,2%**

VERY LOW NATURAL CONTENT

ANTIOXIDANTS

MAXIMUM
VALUE **620mg**
1 COFFEE (7gr)

HIGH NATURAL CONTENT



But is Coffee a FRIEND or an ENEMY of Health?



SEVERAL SCIENTIFIC STUDIES* SHOW THAT
TAKE MORE THAN 300 mg OF COFFEE PER DAY
MAY CAUSE
HARMFUL EFFECTS FOR HEALTH

SCIENTIFIC STUDIES: www.efsa.europa.eu; Istituto Farmacologico Mario Negri; Co.SIC (Coffee Science Information Centre); IARC (Associazione Italiana Ricerca sul Cancro)

**But then, how many mg of Caffeine does a cup contain?
And how many cups of coffee can we drink per day?**

DEPENDS ON THE COFFEE, IF IT IS:

STRONG

WITH A LOT OR EVEN JUST CAFFEINE
AND FEW OR NO BENEFICIAL PROPERTIES

**EVEN JUST ONE CUP CAN BE VERY
HARMFUL TO HEALTH**

HARMFUL EFFECTS

STOMACH ACIDITY, ANXIETY,
INSOMNIA, AGITATION, ARRHYTHMIA,
PALPITATIONS, DIARRHEA

MILD like DUETTO

VERY LOW IN CAFFEINE BUT RICH IN
ANTIOXIDANTS

**YOU CAN DRINK IT
MORE CUPS A DAY**

BENEFICIAL EFFECTS

RELIEVES HEADACHES, EFFECT
CARDIOTONIC, FACILITATES DIGES-
TION AND DIURIES, HELPS TO SLOW
DOWN AGING OF CELLS



What is **caffeine**?

Caffeine is a naturally occurring chemical compound found in plant constituents such as coffee and cocoa beans, tea leaves, guarana berries and the kola nut, and has a long history of human consumption. It is added to a variety of foods, such as baked pastries, ice creams, sweets, and cola drinks.

Caffeine is also found in so-called energy drinks. It is also present in a number of food supplements that are marketed for weight loss and sports performance. Some medicines and cosmetics contain caffeine.

When consumed by humans, caffeine stimulates the central nervous system, and in moderate doses increases alertness and reduces sleepiness.

Caffeine is also found in so-called energy drinks, alongside other ingredients such as taurine, and D-glucurono- γ -lactone.

How does the **body process** caffeine?

Taken orally, caffeine is absorbed rapidly and completely by the human body. The stimulatory effects may begin 15 to 30 minutes after ingestion and last a number of hours. In adults the half-life of caffeine – the time it takes for the body to eliminate

50% of the caffeine – varies widely, depending on factors such as age, body weight, pregnancy status, medication intake and liver health. In healthy adults, the average half-life is approximately four hours, with a range of two to eight hours.

What are the **risks**?

Short-term adverse effects on adults and children can include issues related to the central nervous system such as interrupted sleep, anxiety and behavioural changes. In the

longer term, excessive caffeine consumption has been linked to cardiovascular problems and, in pregnant women, stunted foetus development.

Why did EFSA carry out its **risk assessment**?

Some EU Member States raised concerns about the safety of caffeine consumption in the general population and in specific groups, such as adults performing physical activity,

and individuals consuming caffeine together with alcohol or substances found in energy drinks. The European Commission responded by asking EFSA to assess the safety of caffeine.

How much caffeine do we consume?

Average daily intakes vary among Member States, but are in the following ranges:

| | |
|---|------------------------|
| Very elderly (75 years and above): | 22-417mg |
| Elderly (65-75 years): | 23-362mg |
| Adults (18-65 years): | 37-319mg |
| Adolescents (10-18 years): | 0.4-1.4mg/kg bw |
| Children (3-10 years): | 0.2-2.0mg/kg bw |
| Toddlers (12-36 months): | 0-2.1mg/kg bw |

In most surveys covered by EFSA's Food Consumption Database (see panel overleaf), coffee was the predominant source of caffeine for adults, contributing between 40% and 94% of total intake. In Ireland and the United Kingdom, tea was the main source, contributing 59% and 57% of total caffeine intake respectively.

There are large differences among countries regarding the contribution of different food sources to total caffeine intake among adolescents. Chocolate was the main contributor in six surveys, coffee in four surveys, cola beverages in three, and tea in two. In most countries chocolate (which also includes cocoa drinks) was the predominant source of caffeine for children aged 3 to 10 years, followed by tea and cola drinks.

One reason for the differences in consumption levels – other than cultural habits – is the variable concentrations of caffeine found in some food products. Concentrations in coffee beverages depend on the manufacturing process, the type of coffee beans used, and the type of preparation (e.g. drip coffee, espresso). The levels found in cocoa-based beverages depend on the amount and type of cocoa present in different brands.

How much caffeine is it **safe** to consume?

On the basis of the data available, EFSA's Panel on Dietetic Products, Nutrition and Allergies (NDA) reached the following conclusions:

Adults

- ▶ Single doses of caffeine up to 200mg – about 3mg per kilogram of body weight (mg/kg bw) from all sources do not raise safety concerns for the general healthy adult population. The same amount of caffeine does not raise safety concerns when consumed less than two hours prior to intense physical exercise under normal environmental conditions. No studies are available in pregnant women or middle aged/elderly subjects undertaking intense physical exercise.
- ▶ Single doses of 100mg (about 1.4mg/kg bw) of caffeine may affect sleep duration and patterns in some adults, particularly when consumed close to bedtime.

- ▶ Intakes up to 400mg per day (about 5.7mg/kg bw per day) consumed throughout the day do not raise safety concerns for healthy adults in the general population, except pregnant women.

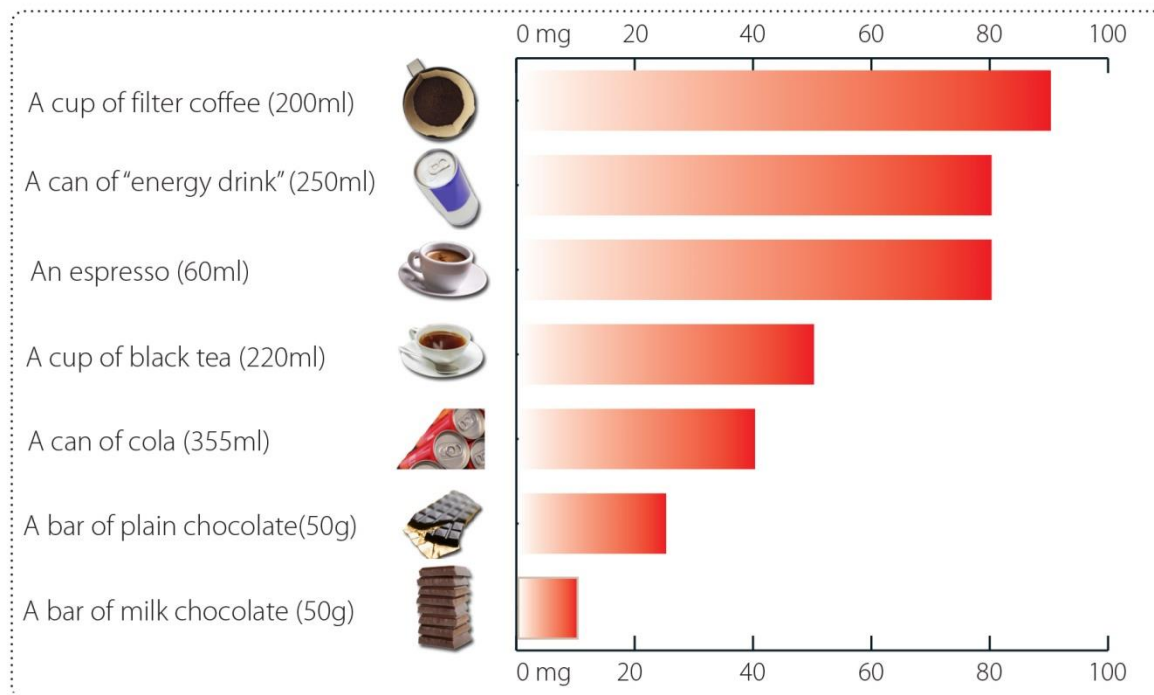
Pregnant/lactating women

Caffeine intakes from all sources up to 200mg per day consumed throughout the day do not raise safety concerns for the foetus.

Children and adolescents

The single doses of caffeine considered to be of no concern for adults (3mg/kg bw per day) may also be applied to children, because the rate at which children and adolescents process caffeine is at least that of adults, and the studies available on the acute effects of caffeine on anxiety and behaviour in children and adolescents support this level. A safety level of 3mg/kg bw per day is also proposed for habitual caffeine consumption by children and adolescents.

How much caffeine is there in...



All figures are approximate as caffeine content and portion sizes vary within and between countries

Does caffeine have an **adverse effect** when consumed with other constituents of "energy drinks" and/or with alcohol?

- ▶ Consumption of other constituents of "energy drinks" at concentrations commonly present in such beverages would not affect the safety of single doses of caffeine up to 200mg.
- ▶ Alcohol consumption at doses up to about 0.65g/kg bw, leading to a blood alcohol content of about 0.08% – the level at which you are considered unfit to drive in many

countries – would not affect the safety of single doses of caffeine up to 200mg. Up to these levels of intake, caffeine is unlikely to mask the subjective perception of alcohol intoxication.

ABOUT US

DUETTO IS...

a dream that comes true:
courageous, ambitious, unique.
The future in an ancient land.



DUETTO IS...

youth., charm, lifestyle. It's the
search for new emotions, the
science of ancient peoples. It 's a
cup of mild, delicate, aromatic,
different coffee...



DUETTO IS...

research, experimentation,
evolution, ideas,
completeness of systems,
cutting-edge technology, service
and reliability.



HISTORY



Caffè Duetto was born from the experience of top manager and business owner of its President, P. Torino, gained in HEINEKEN S.p.a., STAR S.p.a., MARR S.p.a. and QUARTIGLIA S.p.a. (Food and Catering Markets). Coffee interest started in the '90s, beginning to study the market and its problems, and new development possibilities.

In 2000-2001 new Espresso blends were tested, obtained from coffee beans with a low natural caffeine content, to be marketed with innovative commercial, marketing and service policies.

The result is a new coffee Brand, created to intercept the change in taste and the demand from espresso international consumers

a DIFFERENT ESPRESSO, light brown, amber and not black, with a compact and soft cream, with a recognizable taste, delicately aromatic, naturally mild.

In the same year, Caffè Duetto srl was founded. In the following two years we work for the research, selection and choice of:

- Suppliers: Stefany Carter (image), Milano Luce (insigna), Richard Ginori (cups), Figli di Pinin Pero & C. S.p.a. (single-dose sachets),
- Duetto Product Range (for Bars, Ho.Re.Ca., Home&Office, Retail) and Espresso Machines (Cimbali, Faema, Askoy, Didiessa, Spinel),
- Commercial Organization whit external and internal Managers, selected, trained and specialized for Export, Bars, Ho.Re.Ca., Home&Offices (O.C.S.), Retail.
- Internal Marketing Office for the development of Advertising, Promotions, Merchandising, Customer Care and innovative forms of Digital Communication.
- Direct and indirect sales points - **BAR & Ho.Re.Ca.**
- A Programmed and Free Technical Assistance Service with Duetto specialized Technicians (to guarantee the constant quality of coffee), who work respecting a calendar of technical interventions;

The first Bar opens in the spring of 2000.

In 2007 the company inaugurates the new roasting plant in APULIA (Ascoli Satriano)



STRENGTHS

- **COFFEE** - All Duetto blends are obtained from naturally mild coffee.
- **IMAGE** - Our image is modern, young, strong and elegant and evokes the pleasure of a break. It is an image that recalls colors, flavors and mysteries of the world of coffee.
- **ROASTING** - Of futuristic concept, our roasting is completely computerized and, therefore, not subject to variable factors, based on innovative technologies and high production capacity.
PRODUCTION CAPACITY OF 8.000 KG OF COFFEE BEANS (high quality) PER DAY.
- **QUALITY COSTANCE** - The constant quality of the coffee is guaranteed to the final consumer thanks the selected suppliers, the processing, the programmed technical assistance of the machines, the pre and post sales service of the Customer Care.
- **CERTIFIED SUPPLIERS** - Our suppliers are market leaders in their field, have long experience and are reliable.
- **SERVICE** - Our service is timely and constant, focused and personalized.
- **HUMAN RESOURCES** - Our human resources are selected and trained by the Company, have a high cultural level, are passionate and competent.
- **MANAGEMENT AND OPERATIONAL CENTRE** - Our roasting plant, inaugurated in 2007, is located in APULIA- Ascoli Satriano (FG), just 3 km from the highway, on a total area of 20,000 square meters, of which 3,000 square meters are covered.

The plant includes:

- elegant and refined executive and operational offices;
- an analysis laboratory;
- classrooms for conferences and courses;
- an event area;
- an area for the selection and conservation of raw coffee beans;
- a fully automatic roasting plant, equipped with a cooking oven (new system), tested and installed for the first time in the world;
- an area of ripening and preservation of roasted coffee, maintained at constant temperature and humidity;
- a technical assistance / workshop / warehouse center for spare parts;



www.duetto.it

DUETTO SRL

Export Manager Mrs. Anna Cefola

Office: +39 0885 66 09 18 /22

Mobile / WhatsApp: + 39 348 52 61 535

e-mail: export@duetto.it