



ATHENA

CUSTOM MADE SEAMLESS SINCE 2001



ATHENA

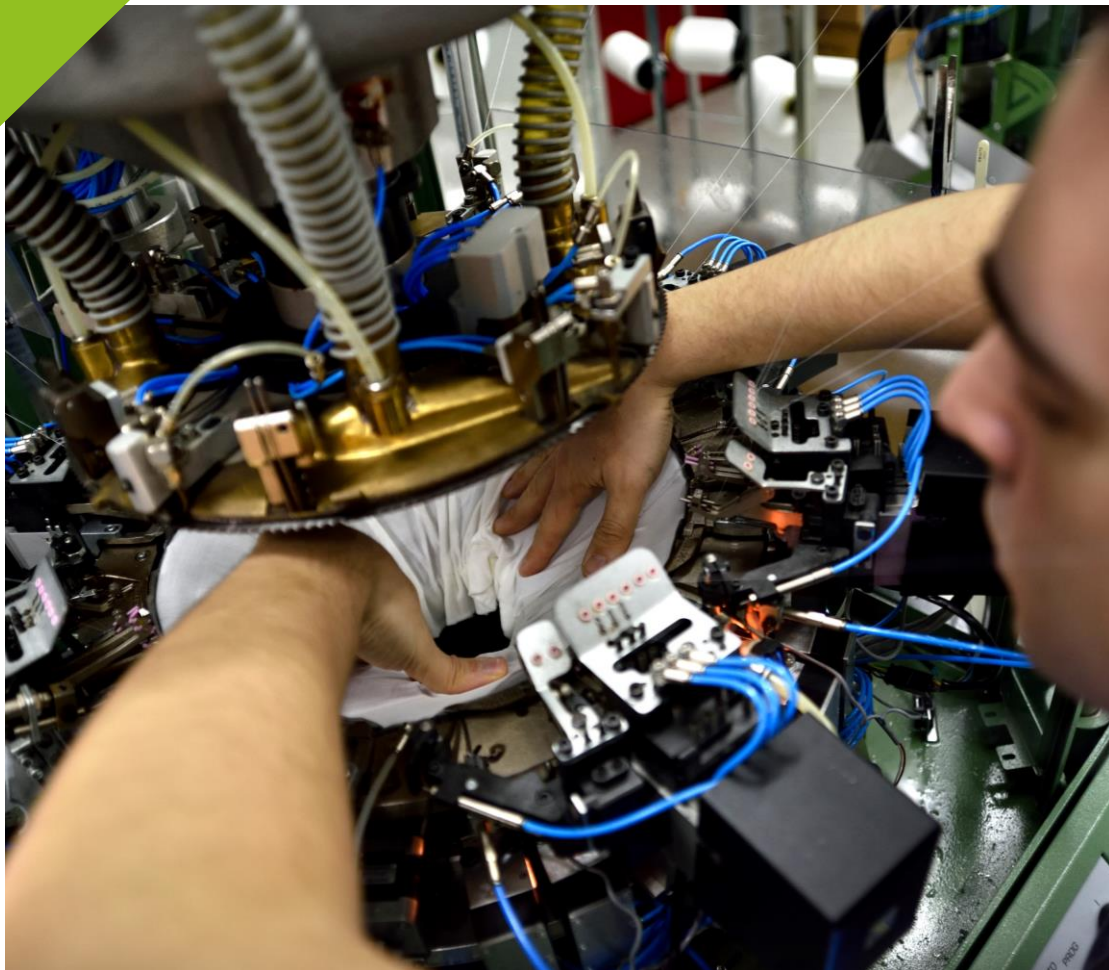
OVER FIFTY YEARS OF
EXPERIENCE IN
THE TEXTILE INDUSTRY



PRODUCTION MACHINERY

We produce approximately 2,200,000 seamless garments per year thanks to our 26 “SM8 Top 2V” machines, gauge 28, and 11 new state-of-the-art “Top 2ST” 3D terry machines, with diameters ranging from 10 to 17 inches.

This variety of cylinder sizes allows us to manufacture a wide range of sizes, meeting customer requirements in the most effective way.





NEW MACHINES: TOP2ST

Our continuous drive toward innovation has led us to introduce a major advancement in our seamless production: the integration of eleven new knitting machines capable of producing garments using our exclusive “SCULPTURA” fabric.

This type of manufacturing process allows raised inserts to be positioned at any point on the garment, enhancing both functionality and technical performance.

The precise application of these raised details using our fabric represents significant added value, both in technical apparel and in the fashion sector, bringing major innovations.



SCULPTURA[®]

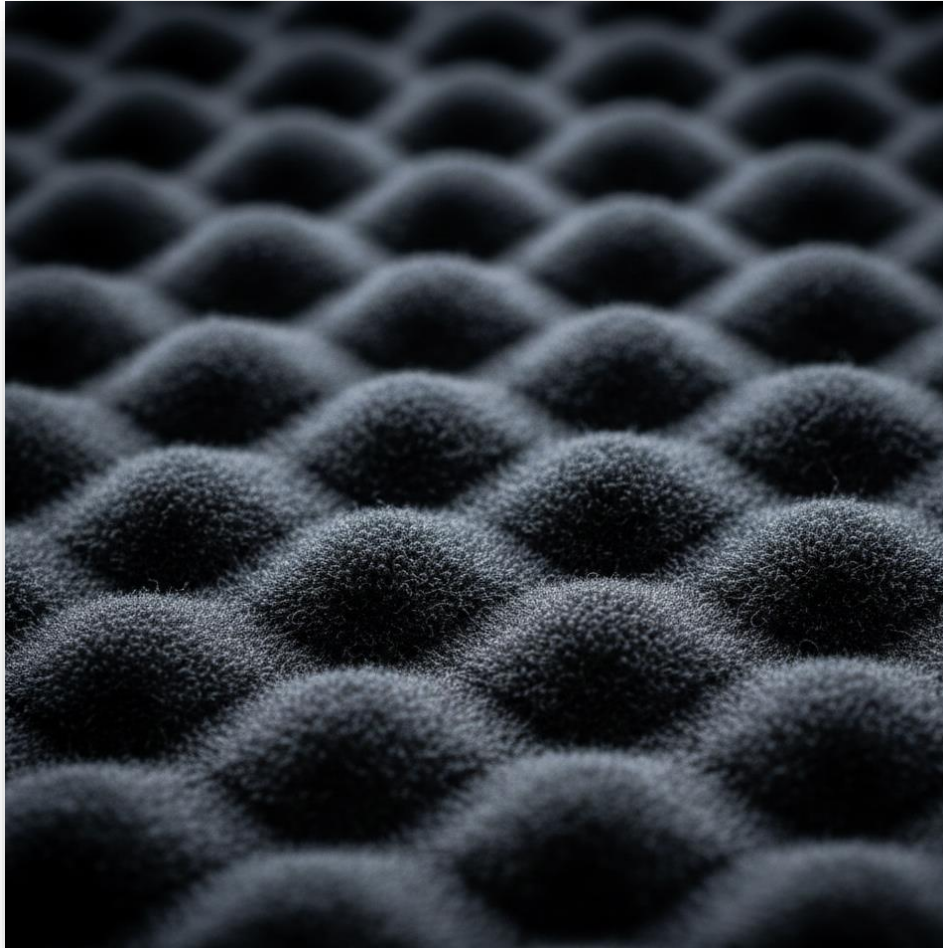
The brand-new project by Athena

DEFINING SCULPTURA

Sculptura is a revolutionary seamless technology that transforms textile into matter. It is a structural evolution where design, performance, and 3D geometry merge into a single, seamless entity.

We don't just create garments; we engineer surfaces that follow the human anatomy, eliminating seams to achieve the ultimate expression of technical luxury.

STRUCTURAL ESSENCE



Beyond the Surface: Integrated 3D Structures.

Sculptura redefine the concept of textile surface. Through advanced circular engineering, we manifest three-dimensional structures directly within the fiber, eliminating the need for traditional construction and seams.

SCULPTURA®

WEAR THE DIMENSION

CONCEPT DEVELOPMENT 2026

ANATOMICAL PRECISION



Infinite Possibility.

Our seamless process allows for the strategic mapping of raised inserts. Performance is no longer an addition, but a structural characteristic of the garment, precisely positioned to follow human anatomy and movement.

SCULPTURA®

WEAR THE DIMENSION

CONCEPT DEVELOPMENT 2026

THE NEW STANDARD



Textile innovation

Sculptura bridges the gap between technical performance and high-end aesthetics. By transforming texture into a functional tool, we offer a disruptive value proposition for the future of apparel: where every detail is sculpted, not simply applied.

SCULPTURA®

WEAR THE DIMENSION

CONCEPT DEVELOPMENT 2026

FUNCTIONAL TOPOGRAPHY

Engineering functionality into every fiber.

We manifest dedicated zones of reinforcement and targeted softness directly within the 3D structure.

SCULPTURA redefines technical apparel, replacing traditional construction with strategic anatomical architecture.

UNRESTRICTED FORM

Volumetric Evolution

Sculptura transcends the traditional close-fitting silhouette of seamless garments. Our 3D architecture empowers the creation of diverse volumes—from precision-tailored fits to oversized icons like hoodies and wide-leg trousers. Aesthetic expression is sculpted directly into the garment, manifesting logos and decorative patterns through structural relief, eliminating the need for external applications.

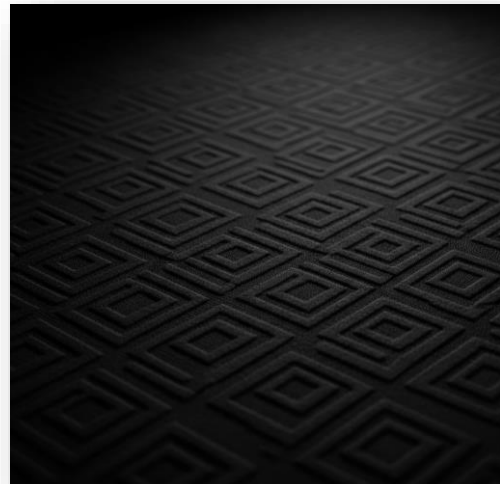


SCULPTURA[®]

WEAR THE DIMENSION

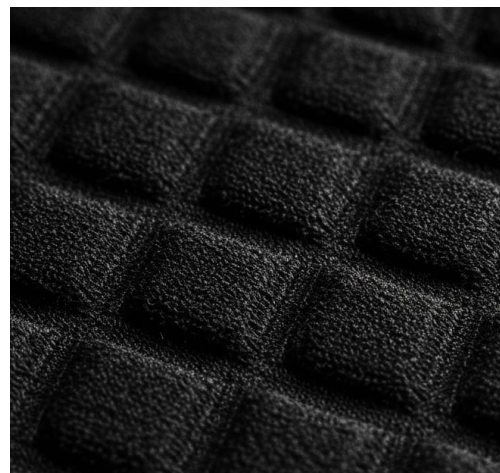
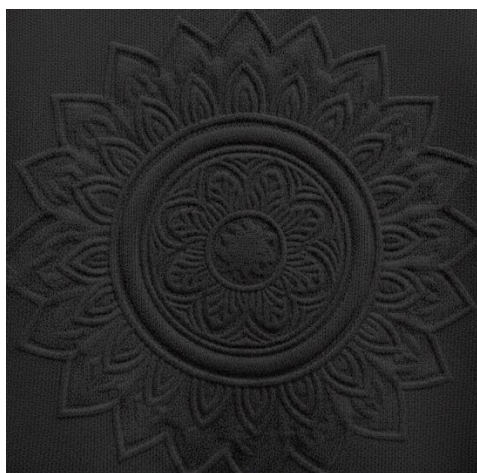
CONCEPT DEVELOPMENT 2026

TACTILE INTELLIGENCE



Beyond the Surface: Integrated 3D Structures.

A curated selection of infinite structural manifestations. Our substantial, elastic membrane engineers strategic air chambers between fibers, optimizing thermal insulation and moisture management. Matter that breathes with the body.



SCULPTURA®

WEAR THE DIMENSION

CONCEPT DEVELOPMENT 2026



Other PRODUCTS

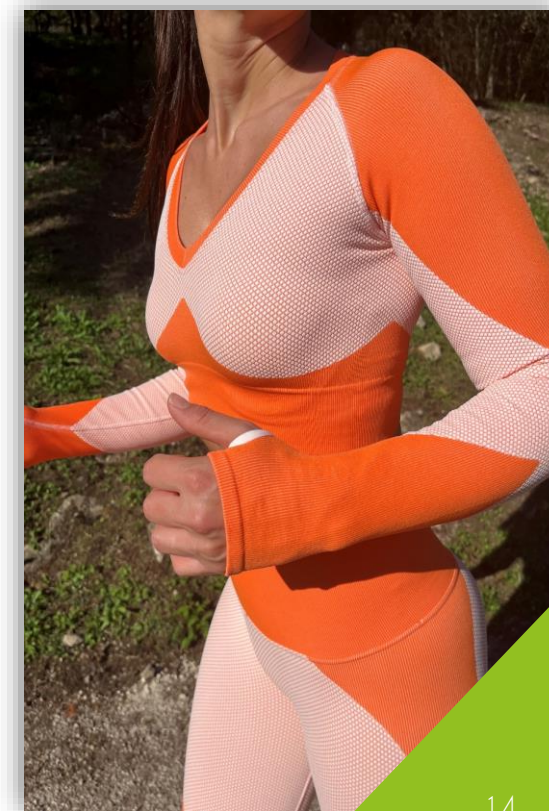


Apparel

Athena creates light, thermal and breathable garments that are manufactured with high-performance technologies and uses different kinds of yarn: bio ceramic, antibacterial, bio sustainable...

the range of our products:

- Sportswear
- Motoring Technical Clothing
- Yoga
- Hiking&Trekking
- Thermal Clothing
- Athleisure&Streetwear
- Fashion
- Maternity clothing
- Shapers
- Base layers
- Underwear
- Nightwear&Lingerie





Sportswear

The softness and extreme breathability of seamless knitted fabrics, combined with the use of antibacterial and hydrophilic yarns, creates the perfect characteristics for sportswear.





Motoring Technical Clothing

Seamless Garments can assure to the athlete the best results, thanks to the absence of friction. Being seamless so tight, it perfectly fits to the person who wear it and it is proved that sports results are better thanks to less constricted movement.

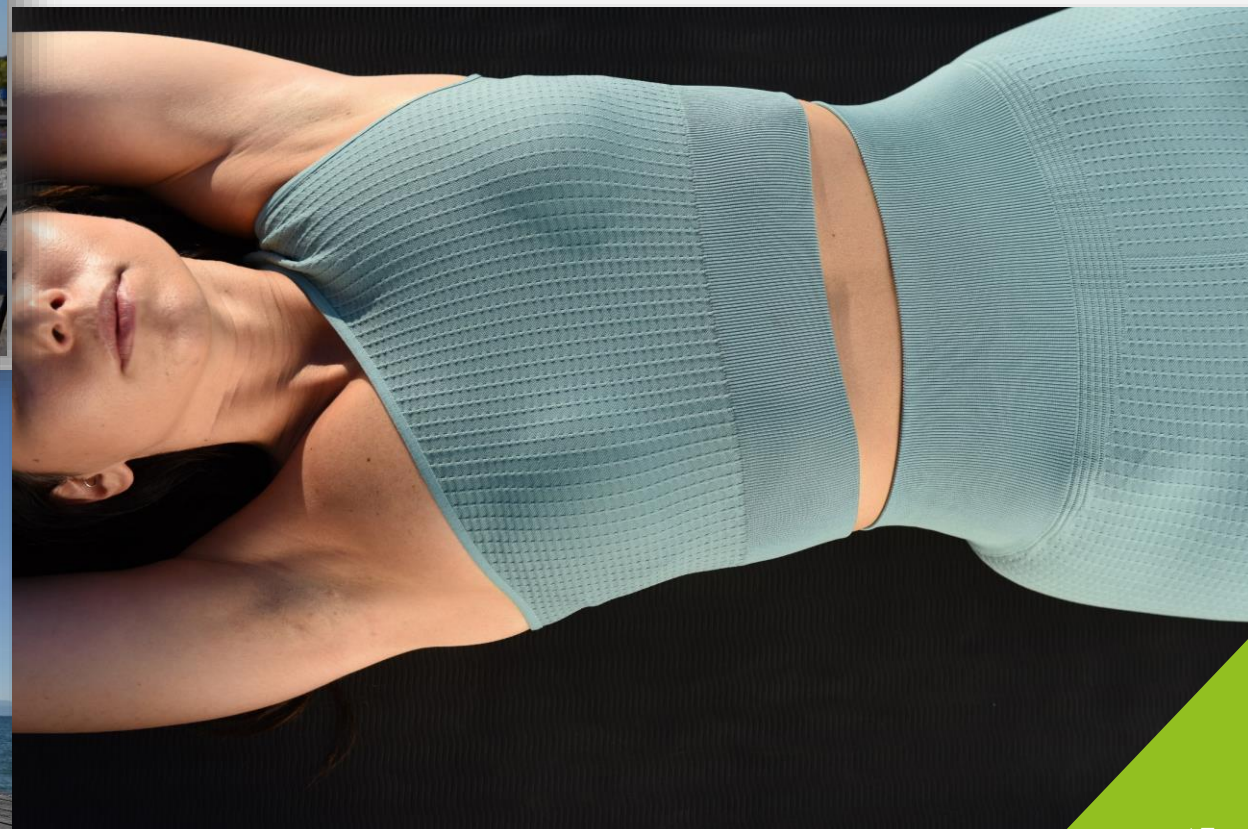
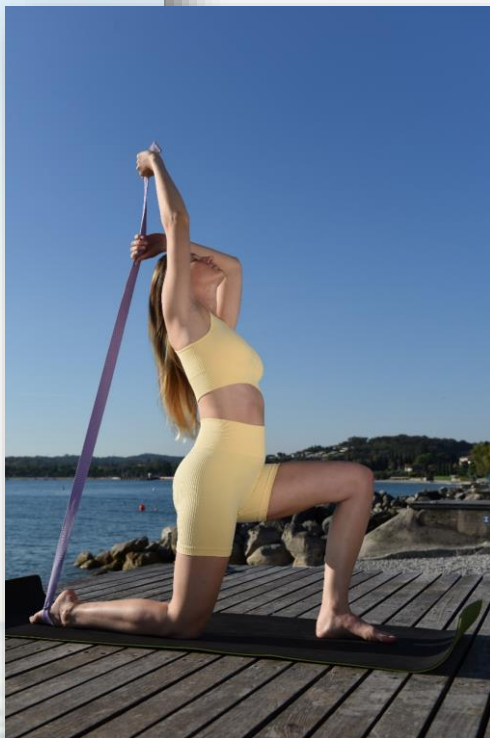
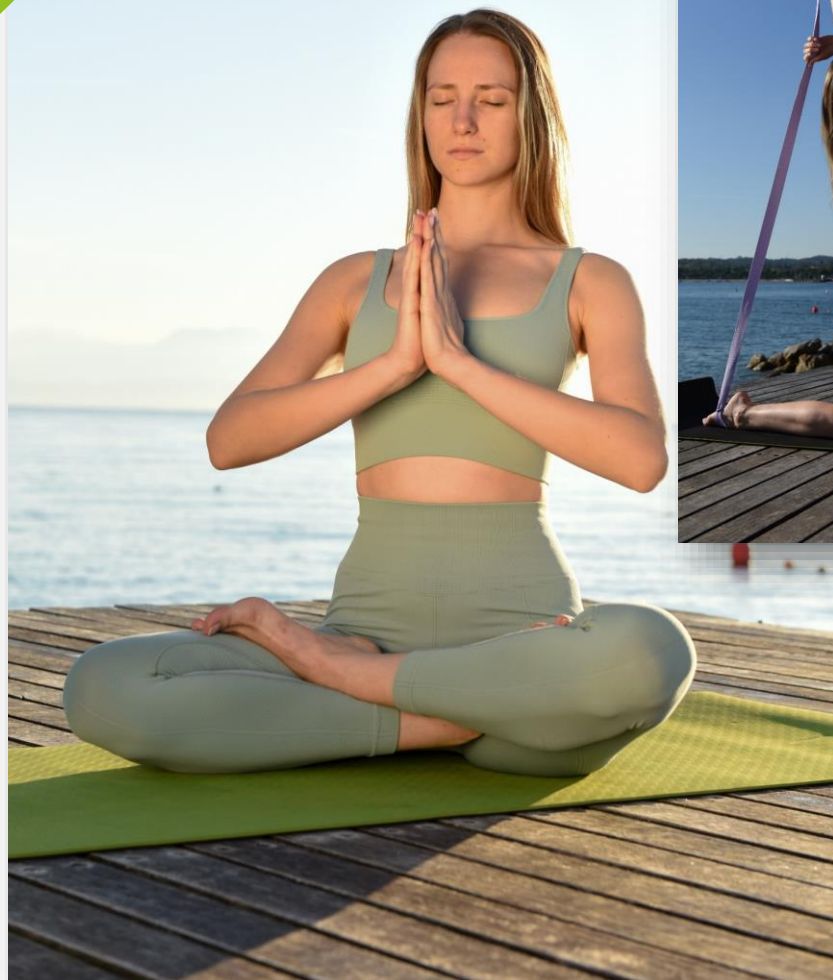




Yoga

as Yoga involves a lot of deep stretching. Leggings with no seams or un-stretchy materials fit like a glove on your body, allowing you to move freely and pleasantly.

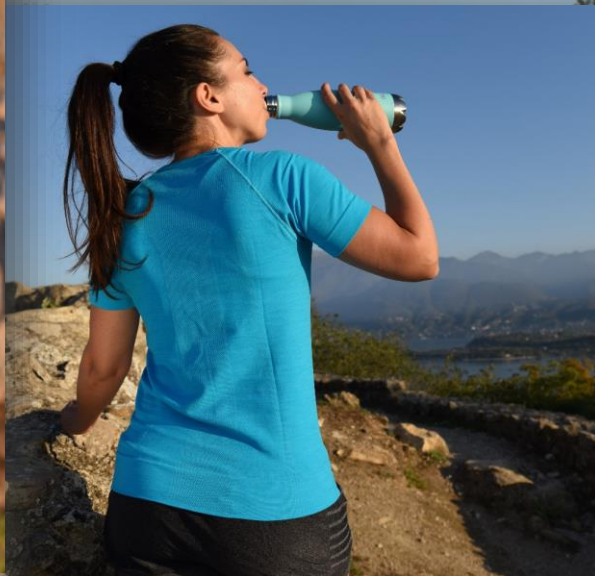
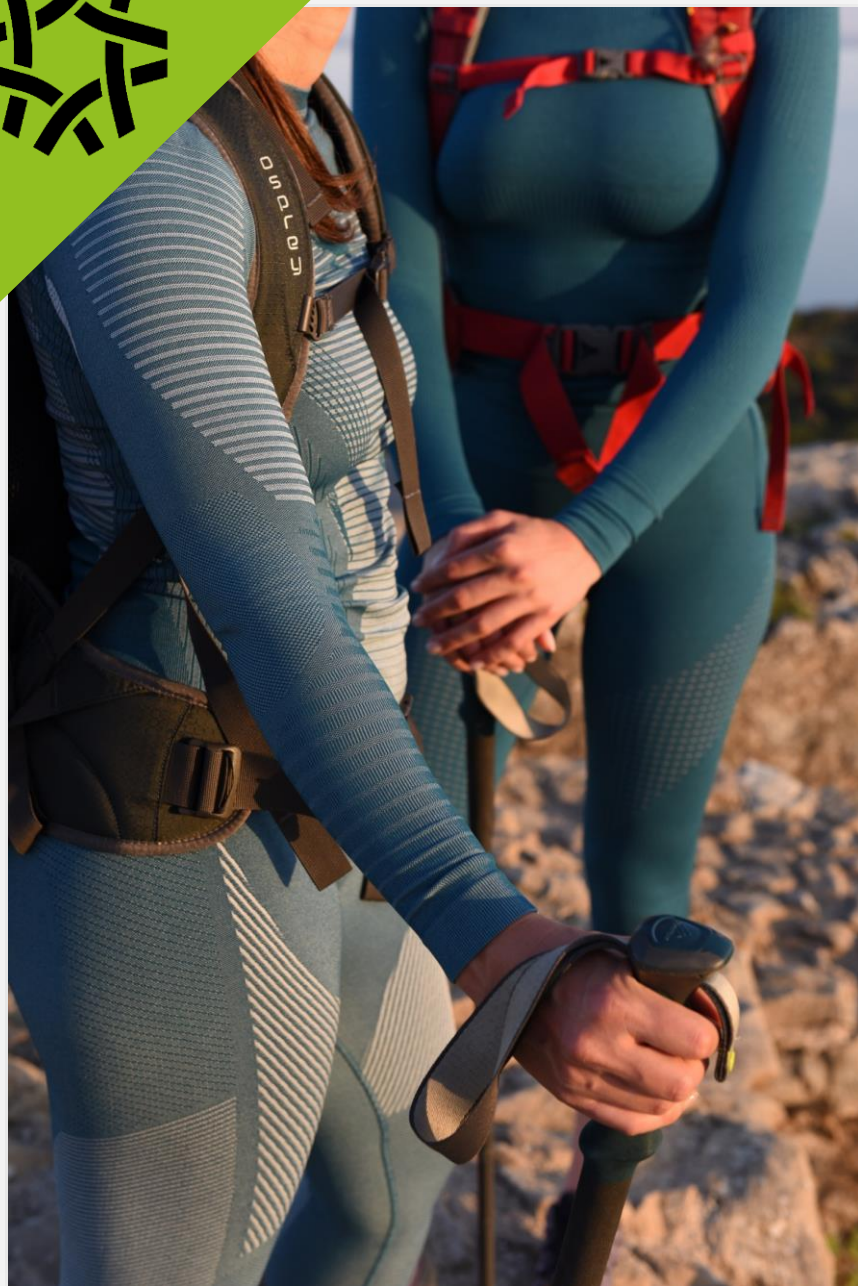
As a result, your training and physical well-being will benefit.





Hiking & trekking

The chance to use technical yarns in every single garment makes seamless technology clothes the right choice to practice hiking and trekking with freshness, performance and protection.

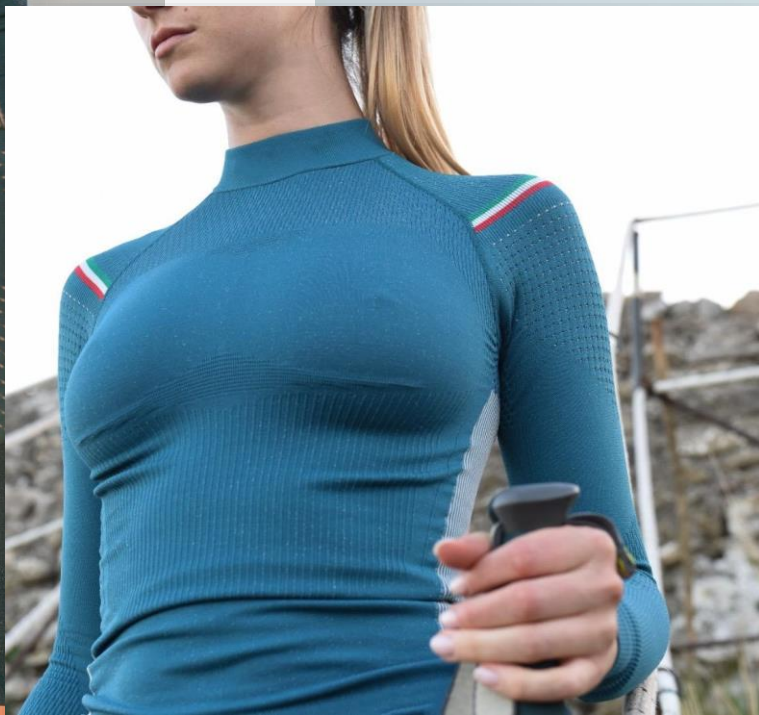




Thermal Clothing

High insulating power: turns humidity into warm.

The exclusive thermal yarns that Athena uses give the possibility of high performance at low temperatures. Highly breathable, ultra-soft and extremely comfortable garments that delicately adapt to the shape of your body, creating an unbeatable barrier against the cold.





Athleisure & Streetwear

New generations demand, for more comfortable and better-looking clothing, is increasing. Seams tend to distort and labels chafe against the skin. Seamless garments feature a knit-in design that eliminates bulky elastic bands and provides greater comfort and stunning styles.



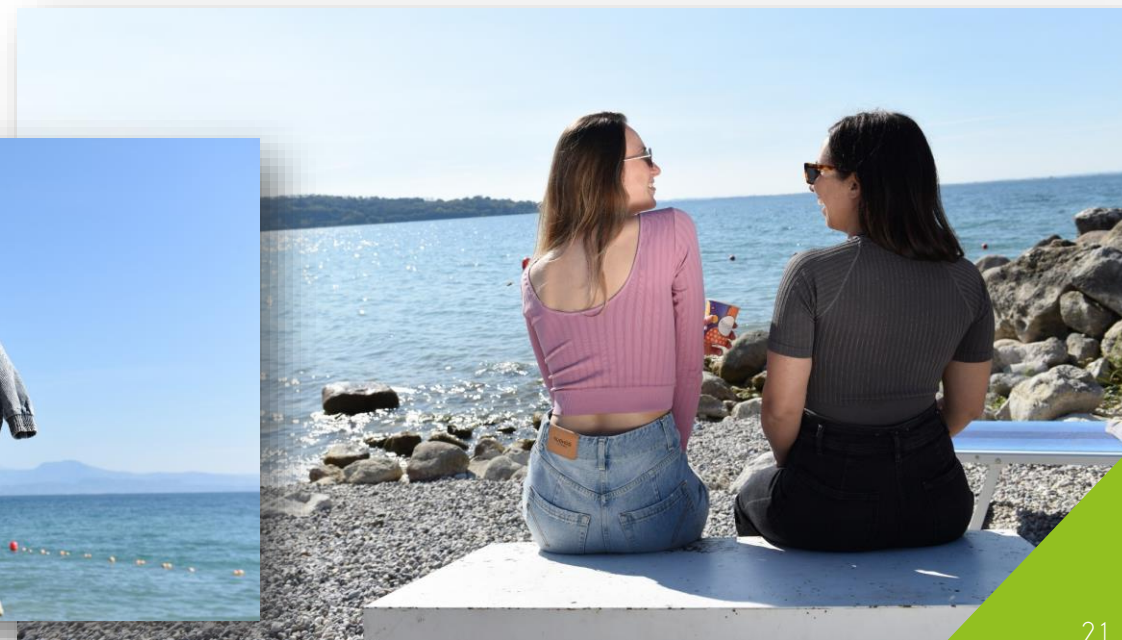


Fashion

Seamless gives the possibility to combine textures, structures and different levels of compression with endless possibilities for coloured patterns, jacquards, ribbing and detailing.

For example a jersey knit can be placed side-by side with a mesh knit, a rib knit, a jacquard knit.

This mesh-up of different knitting methods is impossible to do while using any other type of knitting process. without cutting and sewing.





Maternity Clothing

Maternity support clothes combine style with effective support. Moms can enjoy the super soft and breathable material while providing their body with shapely support. Special soft elastic yarns easily expands to accommodate size changes from the first trimester through the postpartum period.





Baby&Junior

Everything Athena makes in adult sizes, can only be produced in baby and junior sizes. The super soft, underwear, bralettes, t-shirt and leggings are perfect for children sensitive skin.

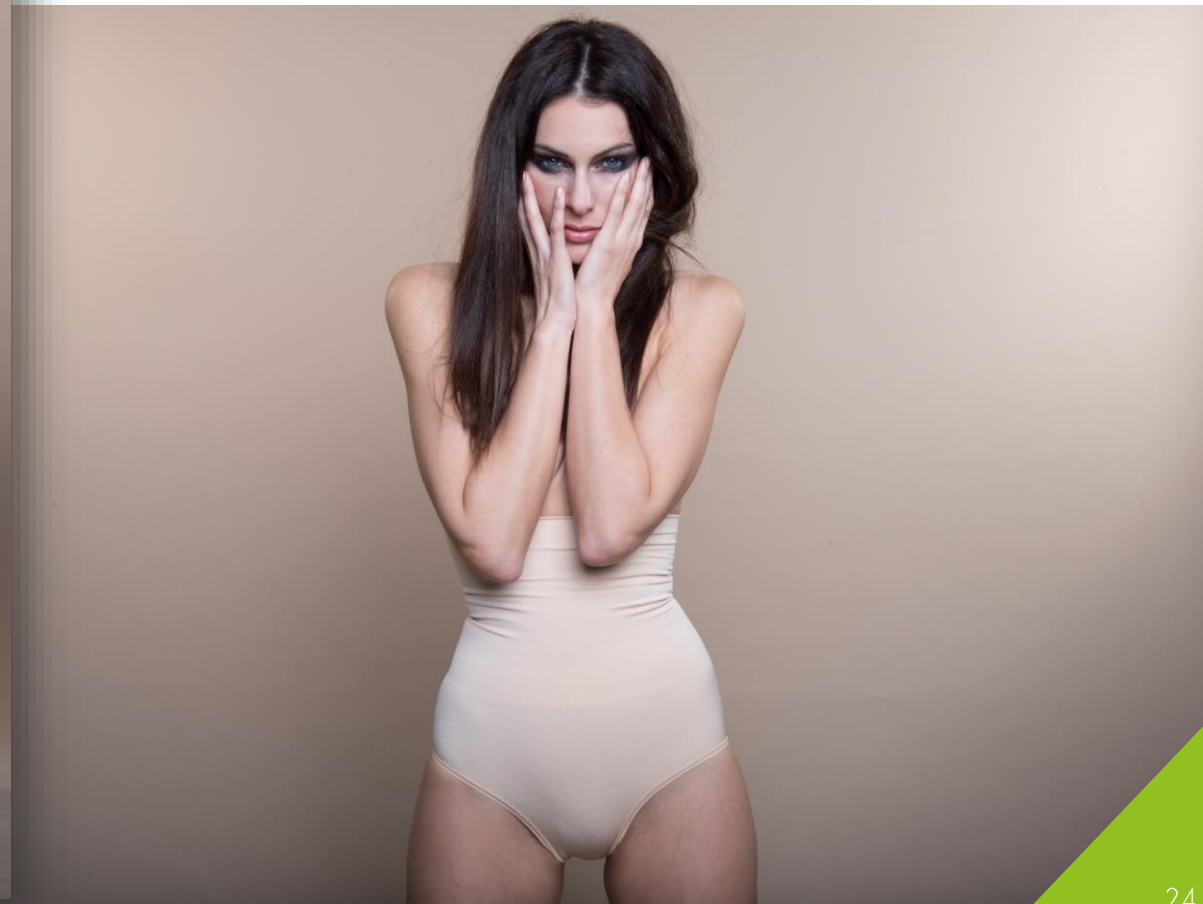
Seamless apparel will not wrinkle or bunch and helps to reduce irritation.





Shapers

Our shapewear adopts a 360-degree seamless craft. As a result, the one-piece shaper is elegantly designed without a zipper in your tummy area, therefore giving you a smoother curve and help you look great in any occasion.





Base Layers

Seamless base layer is the ideal garment for any season, both for those who engage in sports whether outdoor like cycling, running or walking, but also, indoor activities like gym. The key features of seamless base layers are lightness and soft touch, no seams down the sides, maximum freedom of movement, temperature-regulation even during the most extreme activities and/or temperatures.

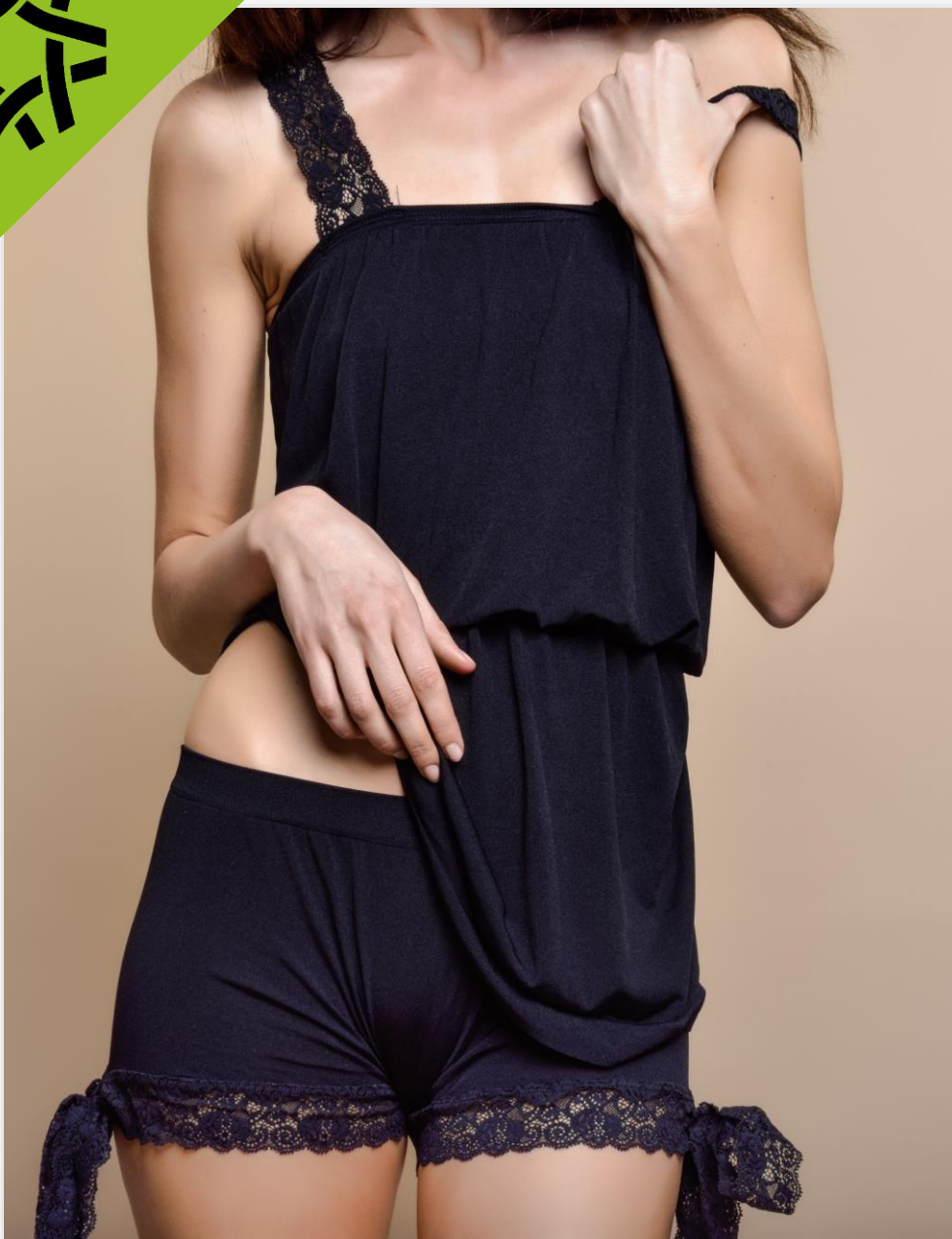




Underwear

Choosing seamless underwear can give you another level of comfort. There is no underwire, bra straps don't dig in because seamless underwear is to provide the best comfort. seamless underwear allow you a full range of movement while providing the best support.

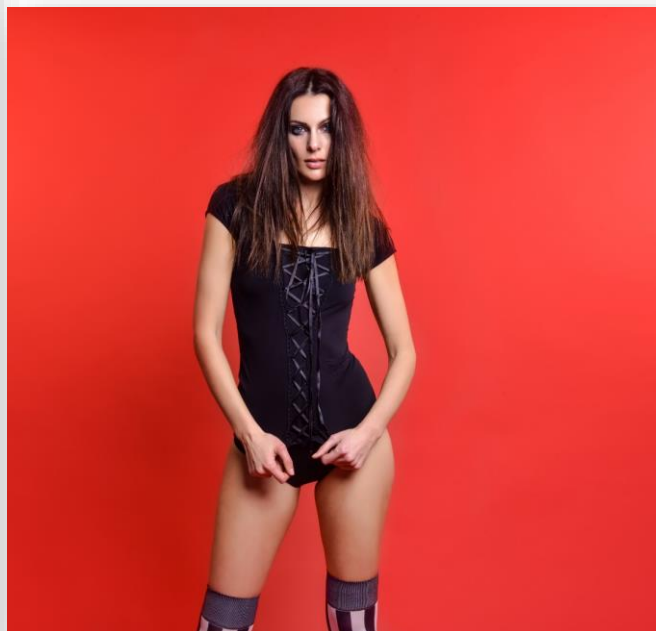




Nightwear&Lingerie

Seamless sleepwear and lingerie garments are made in soft, breathable and light fabrics with a minimum number of seams for the higher comfort on skin.

Lingerie can be designed and implemented with any kind of lace to give style and a romantic touch.





Endless Textures

These in the pictures are just some of the possible textures;

The peculiarity of seamless is that of being able to have more textures, within the same garment but without having the waste of material of a cut and sewn.

The weft fabric is full-bodied, elastic and breathable; Thanks to its construction, it increases the surface area and consequently the volume of air trapped between the fibers. This fact improves the body's insulation and higher ability to absorb perspiration.



Endless Patterns

Jacquard offers many advantages over the traditional fabrics of which it is also made (it can in fact be in cotton, polyester, viscose, silk ...).

The main feature of jacquard fabrics - the fact that the motifs are woven and not printed or embroidered - makes it possible to produce reversible fabrics, with the negatives of the motifs appearing on the opposite side of the fabrics.

The Jacquard is possible for all patterns, both in terms of colors and patterns. These can be so fine that portraits can be reproduced with a quality approaching photography.



Special YARNS



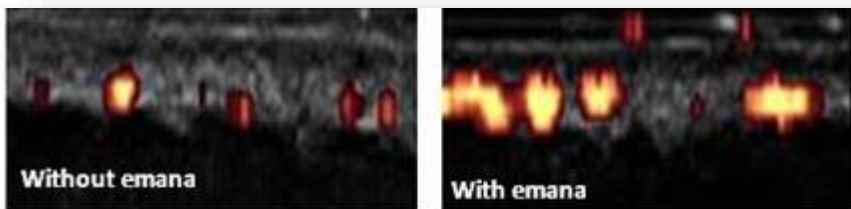
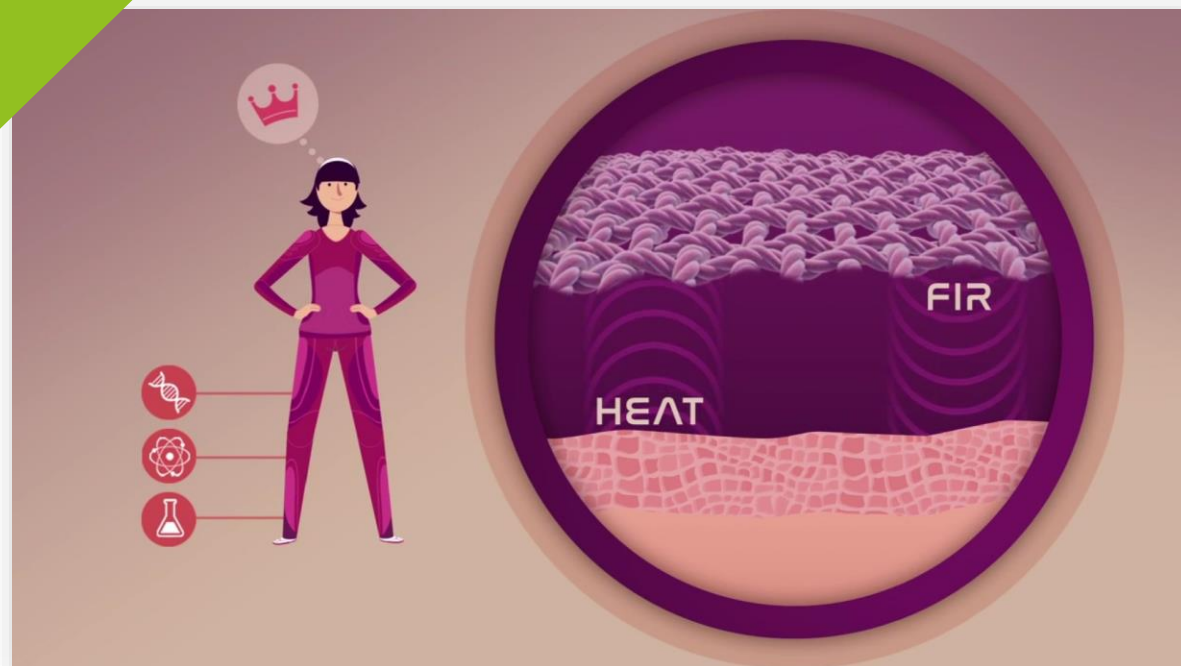
EMANA®

EMANA® is a smart polyamide yarn containing far infrared technology (FIR) which uses body heat to improve the skin well-being.

HOW DOES IT WORK?

Using the minerals stored in the fibers, EMANA® absorbs the warmth of the human body and returns it to the skin in the form of far infrared rays, thus stimulating cutaneous blood circulation. A whole array of benefits are reaped from an increase in skin elasticity to a reduction in unsightly cellulite*, making the skin softer and younger-looking.

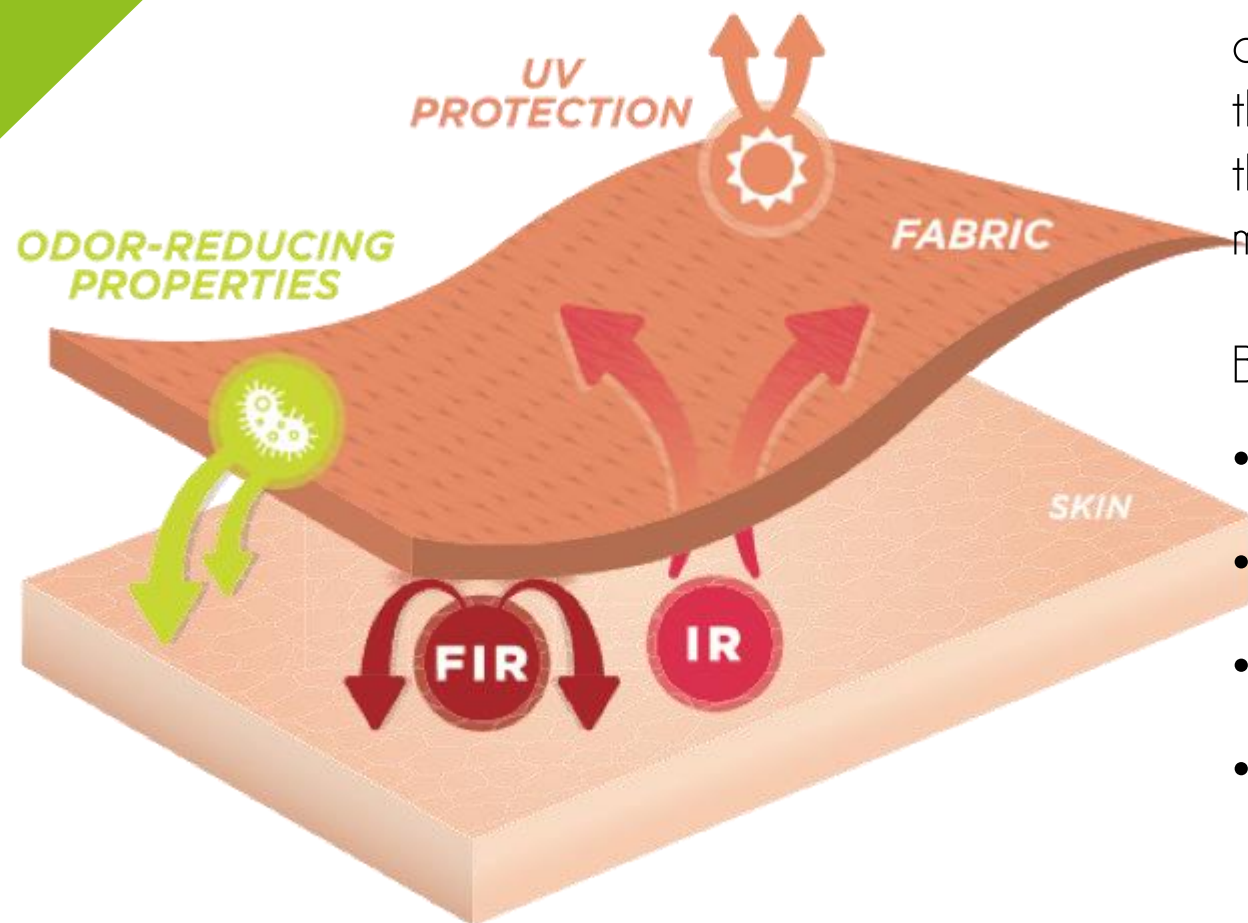
In the sports field, EMANA® helps to accelerate muscle recovery and ensuring comfort and wellbeing.





SENSIL INNERGY®

Sensil® Innergy fiber is created with a built-in, naturally occurring mineral additive that converts the human body's thermo-energy into Far Infrared Rays (FIR), reflects it back to the skin tissues, allowing it to gently energize cells, enhance muscle elasticity, and improve skin appearance.



BENEFITS

- Enhanced muscle elasticity for better performance
- Improved muscle recovery after athletic activity
- Durable and long-lasting
- Repeated washing will not decrease performance



MERINO WOOL

Merino wool is soft; temperature-regulating; repels water and dirt particles; anti-static; doesn't pill; and, finally, it holds properties which eliminate odors instead of holding onto them.

WHAT IS MULESING?

Mulesing is a practice in which skin is removed from the rear of the Merino sheep, without anesthetization, in order to prevent flies from laying their larvae on the sheep.



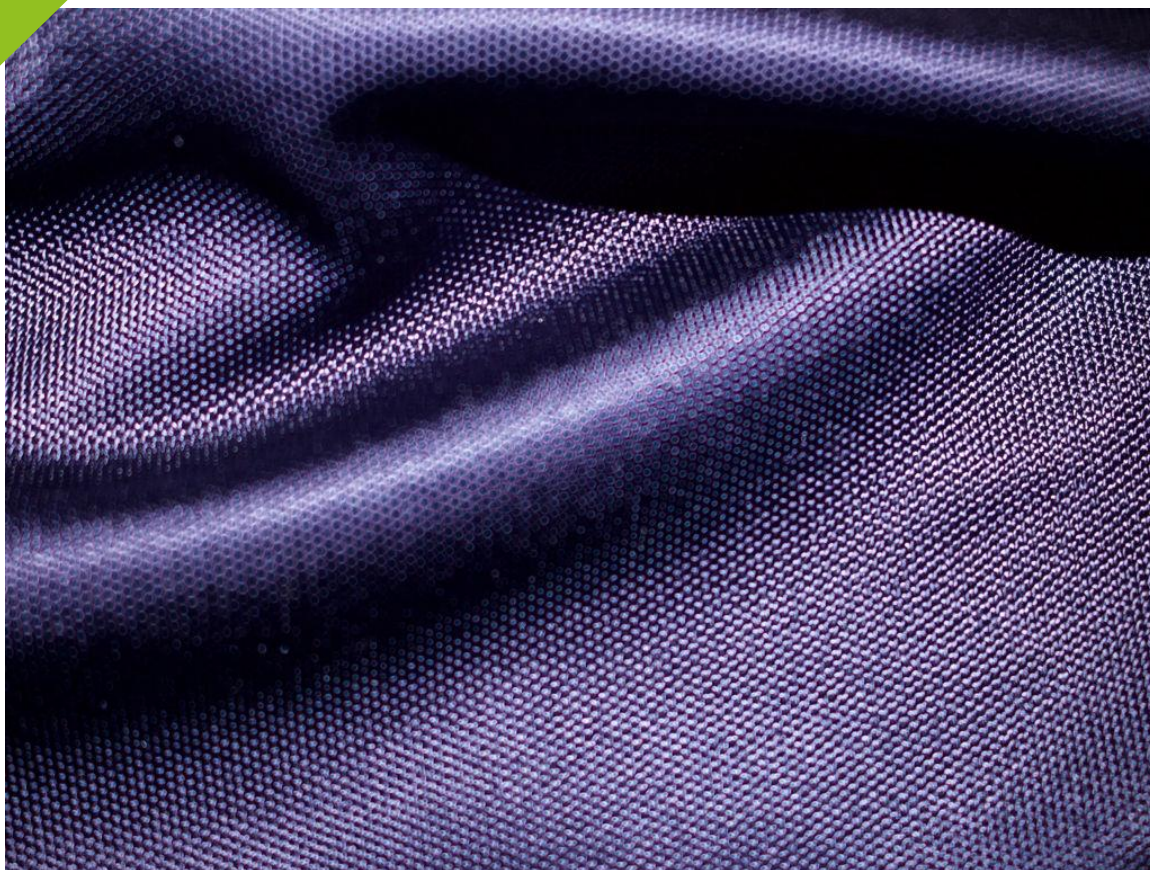
Mulesing Free



METALLIC EFFECT



The distinctive section of this yarn was designed to obtain a distinctive refraction of light which gives garments a sublime metallic effect with refined reflections.



FLAT YARN

Flat yarn is obtained via a processing technique which creates a smooth thread giving garments a fresh silkiness whilst retaining all the technical high-performance of nylon.

FRESHNESS: FDY yarns are extraordinarily breathable so that the skin stays pleasantly fresh.

SILKY FEEL: FDY yarns look and feel like silk meaning they are the perfect solution for amazingly comfortable garments.

SHEEN: Working with FDY yarns allows us to obtain an attractive lustre which stands the test of time.



Recycled & Bio-based
YARNS



AMNI SOUL ECO®

Amni Soul Eco® is the polyamide yarn with enhanced biodegradability, developed and produced by Solvay and distributed by FULGAR.

As demonstrated by laboratory biodegradation tests in accordance with ASTM D5511*, Amni Soul Eco® biodegrades in around 5 years when disposed of in landfills, compared to more than 50 years for synthetics in general.

Amni Soul Eco® reduces the environmental impact and the amount of waste left to future generations.





EVO®

EVO® by Fulgar is a yarn made from castor oil - not for feeding plant that can grow spontaneously. A totally renewable resource that does not require high amounts of water nor subtracts arable land for food uses. The biomass source is castor bean, *Ricinus Communis*. The monomers used in the polymerization are partially or completely sourced from castor oil.

- **ULTRALIGHTWEIGHT FIBER:** Reduce the fabric weight by 25%
- **EXTRA RAPID DRYING:** Dry in 50% less time
- **MOVE COMFORTABLY:** Superior modulus of elasticity
- **ODOR CONTROL:** Bacteriostatic capacity
- **THERMO ISOLATION:** Intrinsic thermal insulation
- **BRIGHT COLOURS:** Excellent dyeing qualities



A better way to the future



GRS 2015-005 certified
by ICEA



Q-NOVA®

Q-NOVA® is an environmentally-sustainable nylon 6.6 fiber obtained from regenerated raw materials and which meets given traceability requirements.

The MCS process is a mechanical regeneration system which does not involve using chemical materials which would detract from the sustainability of the end product.

Q-NOVA® is made for more than half by pre-consumption waste: these materials were unusable in any other way and would have been disposed of as external waste.



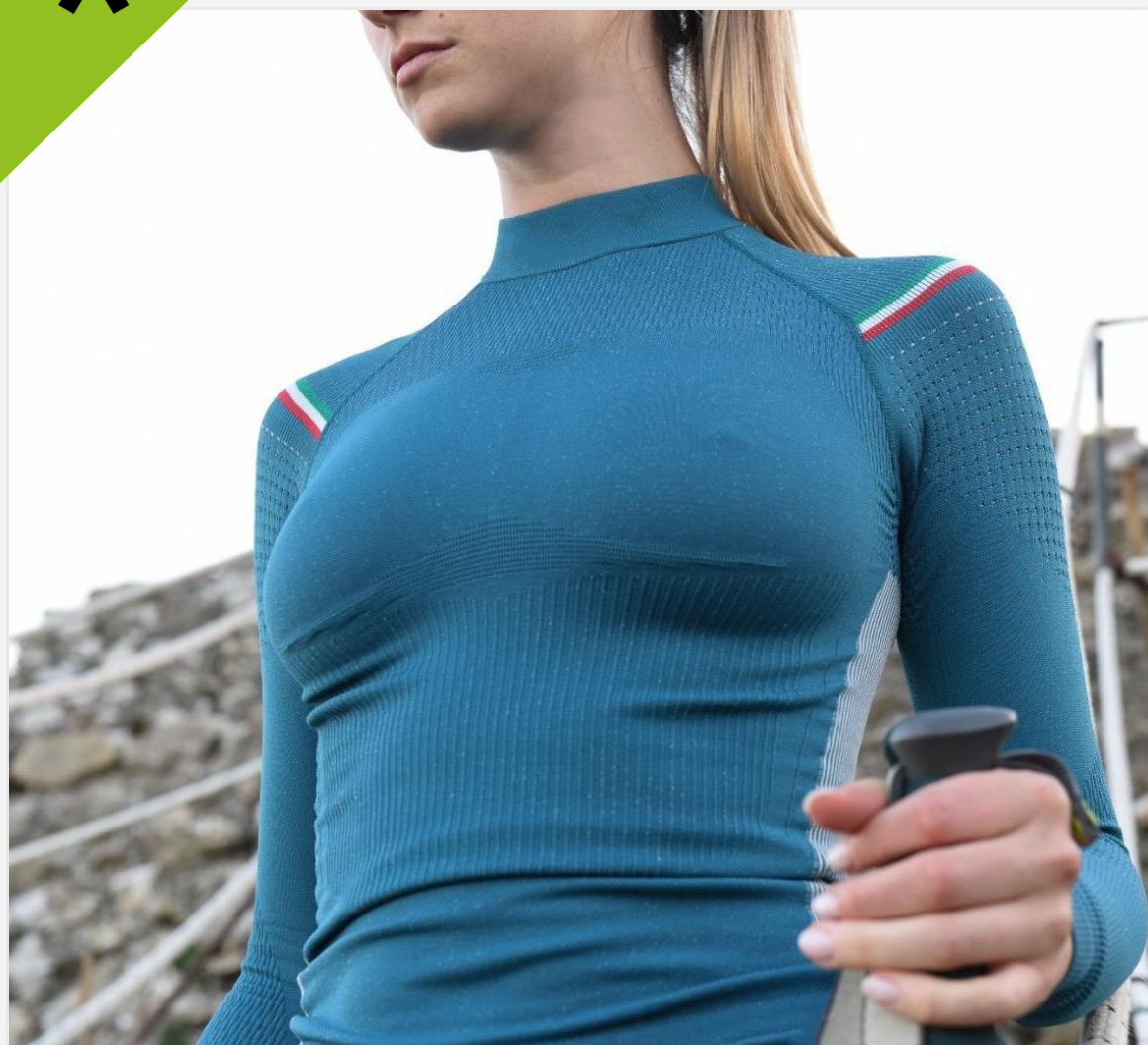
Q-CYCLE®

Q-CYCLE® is an innovative polyamide 6.6 100% of the raw material needed for its production has been replaced by pyrolysis oil from end-of-life tires and attributed to it in a mass balance approach.

The polyamide 6.6 offers the same functional and aesthetic benefits of lightness, strength and resistance but in a more sustainable form. It can be used to produce high quality fabrics and is the ideal solution for all textile applications – it can be processed with ease like a normal polyamide, so it combines with all fibres.



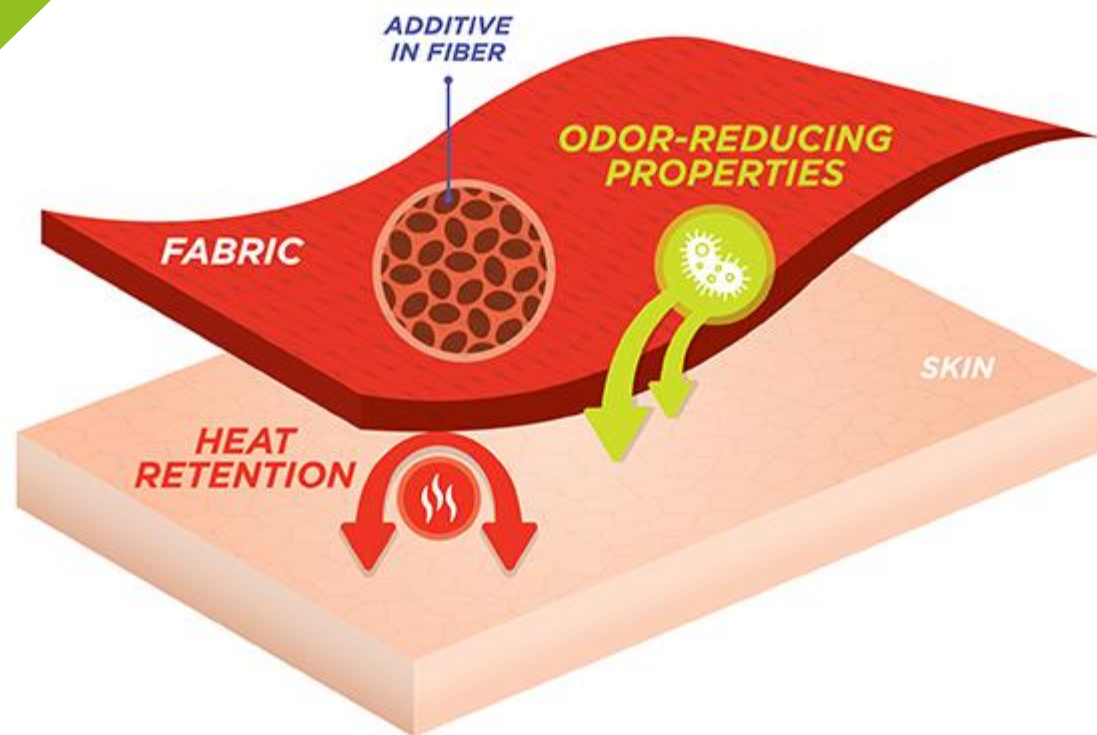
Technical YARNS



DRYARN®

Dryarn provides top levels of breathability. Many other fibers don't allow the body to breathe properly, blocking the body's normal perspiration process altogether or, at best, allowing it to function for a limited period only.

During light sports activities Dryarn controls the flow of perspiration vapour to keep the body's thermal regulation system well balanced and the skin dry. Where higher levels of physical effort are involved, Dryarn will transfer sweat from the skin to the surface of the fiber and onwards to the outside of the fabric and into the environment. It does this quickly and efficiently.



SENSIL HEAT®

Like a cup of warm cappuccino on a chilly afternoon, SENSIL® Heat premium Nylon 6.6 warms from within. This unique, environmentally responsible fiber is made with coffee charcoal repurposed from coffee bean shell residue. SENSIL® Heat has been verified to preserve body heat while absorbing and managing moisture and neutralizing odors*.

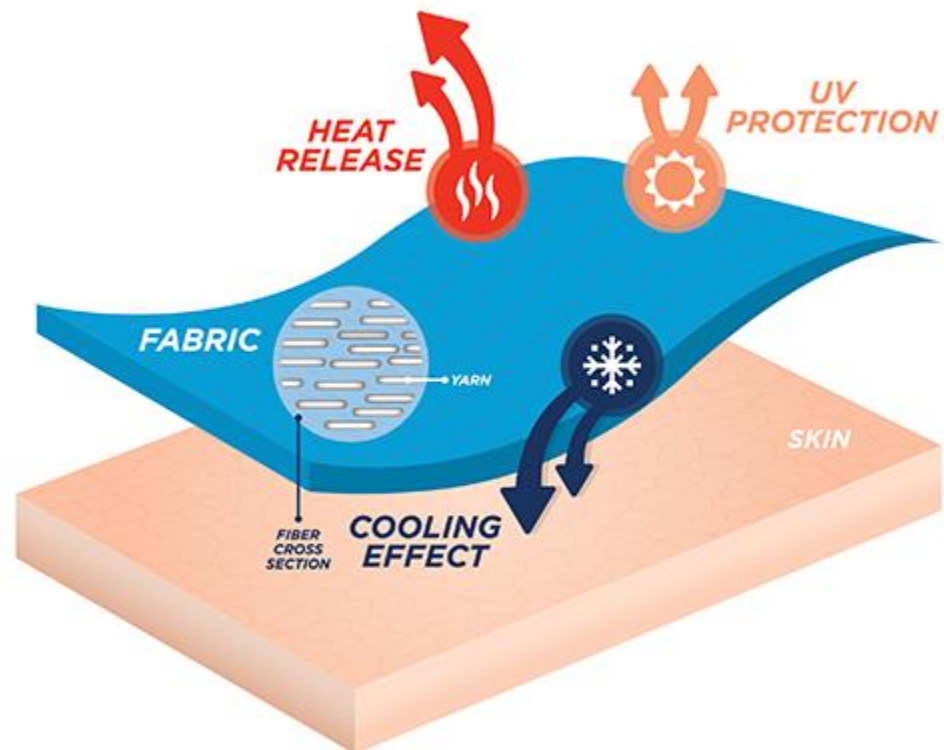
BENEFITS

- Impeccable thermo-insulation
- Added as an inside layer of fabric, SENSIL® Heat maintains the body's natural warm temperature and keeps the wearer warm.
- Odor-reducing properties already inherent in Nylon 6.6 are enhanced by the coffee charcoal, which absorbs and neutralizes odors effectively
- Environmentally friendly: Coffee charcoal is created from coffee bean shell residue, a natural surplus.



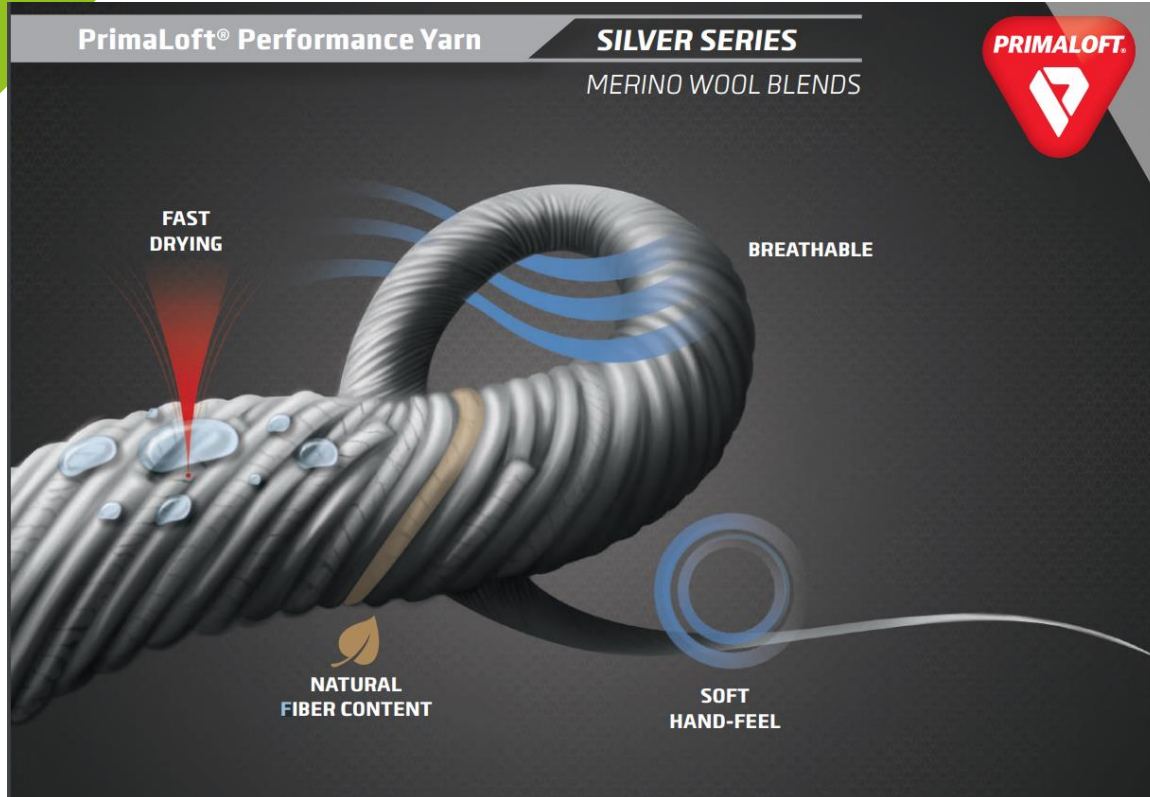
SENSIL BREEZE®

When the heat is on, nothing feels better than a soft breeze. SENSIL® Breeze premium Nylon 6.6 with its unique cooling sensation has been tested and shown to reduce body temperature*. Soft, lightweight, with beautiful drape, SENSIL® Breeze generates the sense of well-being that comes from being cool, dry, and comfortable.



BENEFITS

- Cooling effect helps maintain a comfortable body temperature during and after physical performance and in hot weather
- Efficient ventilation facilitates optimal physical performance
- Innovative cross section and fine yarn count create fabric with high drape, improved comfort
- UV protection provided by the unique polymer
- Ultra-soft hand feel, providing a smooth sensation on the body



PRIMALOFT®

The PrimaLoft® Performance Yarn collections provide the perfect balance of comfort and performance. PrimaLoft® Performance Yarns have been engineered to be used alone or combined with other yarns to create knit garments, including seamless base layer, sweater, and underwear.

Responding to designers' demand for high performing ingredients for knitted garments and accessories. PrimaLoft® Performance Yarns deliver comfort and performance for a range of consumer activity levels.



CONTACTS

Athena

Offices – Show room – Production

Via Virgilio, 90

I – 46042 Castel Goffredo (MN)

+39 0376 771988

isabella@athena-italy.it

www.athena-italy.it