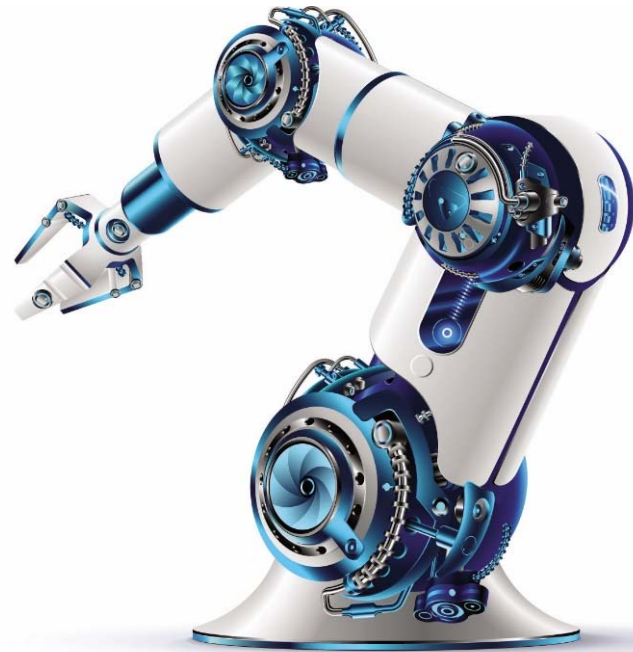


GDF *OUR TEAM*
YOUR SOLUTION



About

The **GDF Group** is an organization of companies specialized in **design, commissioning, programming, training and technical support** for all major brands of **ROBOT, PLC, CNC**.

The field experience gained over these **20 years** added to the previous experience of our founding members allows us to offer solutions in **all sectors of the industry**.

The **GDF group** constantly working to improve and increase the number of **services and products** offered to the customers.

We have extended experience on all the major **ROBOT, PLC, CNC** systems used in the industry, **MITSUBISHI, OMRON, ROCKWELL ALLEN BRADLEY, SIEMENS, SCHNEIDER ELECTRIC, FANUC, ABB, KUKA, MOTOMAN YASKAWA, COMAU, NACHI** and many others...



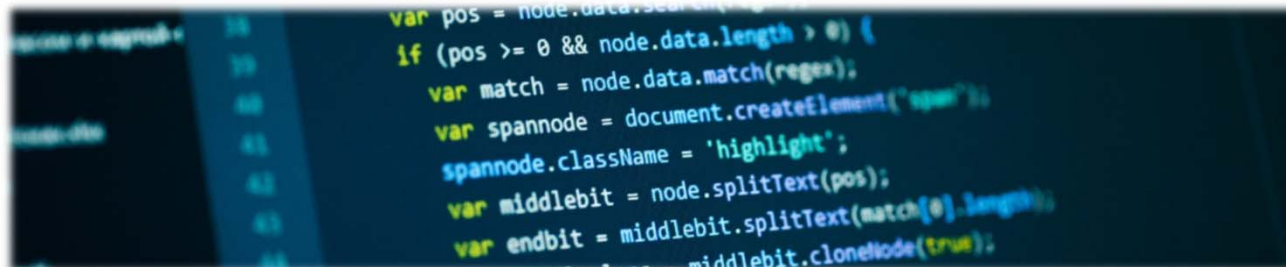
History

- ❑ 2000 – Graziano Dessì open **GD Meccanica**, a company specialized to providing high skilled manpower
- ❑ 2011 – **GDF COMPANY** is established to provide more services in more countries around the world
- ❑ 2012 – **GDF COMPANY** starts activities in North America in order to provide engineering services for machine builders and OEM´s
- ❑ 2016 – to streamline services across **NAFTA** markets **GDF COMPANY** open´s **GDF Mexico** division
- ❑ 2017 – to optimize services in energy industry it´s open a dedicated division, **GDF ePower division**, is established **GDF GROUP**
- ❑ 2019 – **GDF Group** open the **GDF AUTOMATION LLC**, for optimize the services in USA and Canada
- ❑ 2020 – The **GDF GROUP** acquires **GLE ROBOTICA**, to increase and optimize its services in central-southern of Mexico and Central America



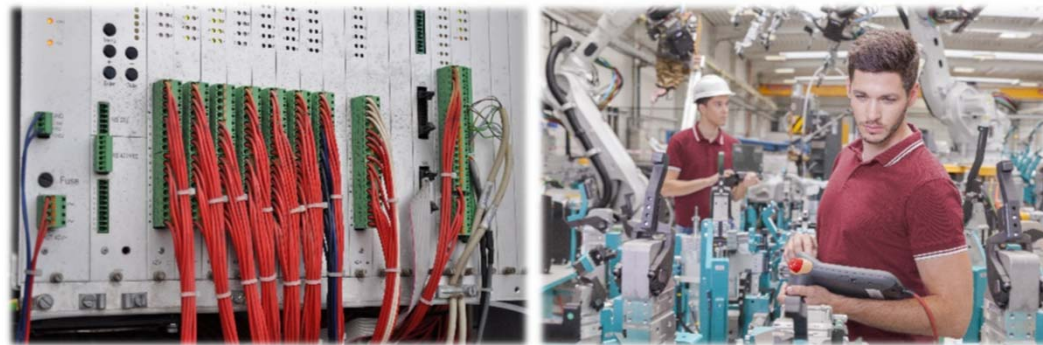
Engineering & Design:

- PLC, Robot , CNC & HMI applications
- Project Management
- Design of electrical engineering
- Design of mechanical engineering
- Standard simulation & process simulation
- Full Engineering Develop
- Traceability
- Collaborative systems and industry 4.0
- If required we have staff to work offline from our offices or from customer premises



On Site Commissioning:

- ❑ PLC, Robot , CNC & HMI commissioning
- ❑ Installation Supervision (mechanical and electrical manpower)
- ❑ Site and Project Management
- ❑ Build of electrical engineering
- ❑ Build of mechanical engineering
- ❑ Robot, PLC, HMI and CNC debugging at customer site



Technical Support:

- ❑ PLC, Robot, CNC & HMI technical support
- ❑ Production support
- ❑ Training courses on all major PLC, CNC and Robot systems
- ❑ Technical Support 24 hours
- ❑ Teleservice & remote service
- ❑ Maintenance (predictive, ordinary, extraordinary)



GDF ePower Division

The GDF ePower division was created to give an ecological and sustainable approach to industrial automation.

The ePower team offers:

- Energy saving studies
- Quality system optimization, zero scrap target
- Intelligent use of indoor and outdoor spaces in the production site
- Cycle time savings analysis
- Increased efficiency production facilities
- Installation of renewable energy photovoltaic systems



Skills

We have international experience in software development, installation support and plant startups.

With a broad range of experience and knowledge, our work team has developed important projects in all main industry sector, using systems as **Siemens, Allen Bradley, Schneider Electric, Mitsubishi, Fanuc, ABB, Kuka, Motoman, Nachi, Comau** robots and **CNC, 840D Sinumerik CNC, Fanuc CNC** and many more.

GDF Group, a professional team committed to make your project a SUCCESS!



Why Us?

We have extensive experience and knowledge, our team has worked in the automotive and foundry industry, steel industry, general industry, appliances industry, food & beverage industry.

We have many talents! But only **ONE TEAM!**

- Single Point of Contact
- Consulting and sales services in Europe and America
- International partners network
- Full engineering services
- Multiple services provided by a single group of companies
- Structured to meet customer requests quickly



Contact



EUROPE:

Phone: +39 338 314-9965
E-mail: info@gdf-group.com

USA - CANADA – MEXICO, LATAM & ASIA:

Phone: +52 (55) 4828-5368
E-mail: info@gdf-group.com

GDF ePower Division:

Phone: +52 (55) 4828-5368
E-mail: epower@gdf-group.com

Visit us at:

www.gdf-group.com