

# STUCCO ITALIANO FINISHES BROCHURE



MADE IN ITALY

The atmospheres of the most refined Italian  
tradition in thirty-two exclusive materials



# Two lines

# Thirty-two products

# Unlimited colors and effects

## **THE TRADITION OF LIME**

Twenty lime and mineral-based materials, that revisit the traditional Italian plasters. Suitable for all types of environment.

This line includes finishes for exterior and interior use on walls, as well as solution for seamless floors. The majority of these materials comes in Natural White, but they can all be tinted in any colour with Stucco Italiano's Colour System. A 100% natural version in powder form is available for many of these products. They are applied with trowels or spatulas.

## **DECORATIVE PAINTS**

Twelve acrylic products that explore contemporary and vanguard fantasies. Suitable for all types of interiors.

These materials are to be applied on interior walls only, and can be dyed in any colour with Stucco Italiano's Colour System. These paints are appreciated for their highly decorative qualities and fancy look. They are applied by roller, brush or spray, excluding Supernova and Dune finishes, which are applied by trowel.



### **All our products are made in Italy**

The excellence of our products is achieved thanks to the best raw materials, which are all of Italian origins. Stucco Italiano is connected to the Italian artistic tradition with a receptivity for new exigences.



### **We are members of the Green Building Council**

Since 2011, our environmental awareness led us to contribute to the achievement of Leed certifications with a line of products, which contain raw materials coming from recovery of scraps of marble.

# THE TRADITION OF LIME

These lime-based products sink their roots into the history of Venetian and Italian plasters. Excluding Epofloor, they are all bio materials. Some of them have an eco-friendly version, which excludes all chemicals in favour of natural products such as casein, shellac and vegetable starch. Four of these finishes also participate to the achievement of a Leed certification, since they contain raw materials coming from recycling or recovery of scraps of marble. Applicable with trowels or spatulas, the final texture can be varied: smooth and glossy or textured and opaque.

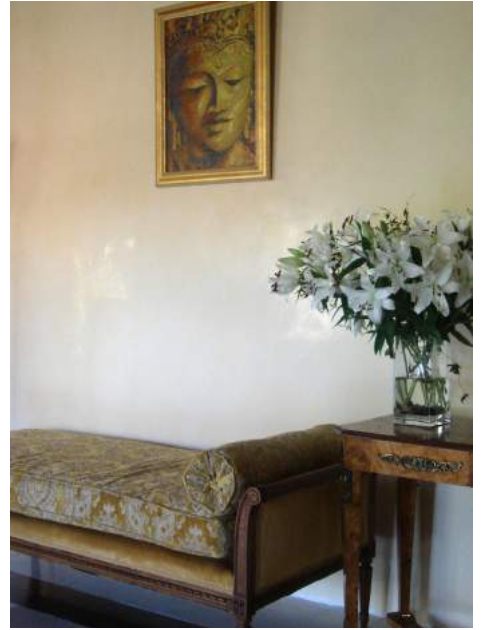
## Finishes

- Marmorino Veneziano Coarse
- Marmorino Veneziano Medium
- Marmorino Veneziano Fine
- Marmorino Metallic
- Marmorino Velvet
- Seta - Silk
- Dolomia
- Calcite
- Intonachino
- Beton Stucco
- Tadelakt
- Lime Paint
- Dilavato
- Travertino
- Terracotta
- Stucco Lava
- Stars
- Pastellone
- Epofloor
- Magnesite

## Additives

- Terracotta
- Salt & Pepper Sand
- Mother of Pearl
- Milled Marble
- Mica
- Glitters
- Glitter Cream
- Velatura
- Ebano Powder
- Pearl Cream
- Phosphorescent
- Glass aggregates

*Finishes in the pictures (left to right, top to bottom): 1. Interior villa wall in Marmorino Velvet; 2. Seamless floor in Pastellone; 3. Exotic wall in Marmorino Medium; 4. Shop wall in Stucco Lava Copper Pearl Cream; 5. External villa wall in Dilavato; 6. Bedroom accent wall in Marmorino Fine*







## Marmorino Veneziano Coarse

*The classical Polished Plaster of the Venetian tradition*

This natural lime-based plaster is the most typical decorative finish in the Venetian tradition. It's a plain finish, with little movement and medium shine, also used to realise faux marble effects.



ecological



interior



exterior



## Marmorino Veneziano Medium

*The modern glossy Venetian Polished Plaster*

It is a natural lime-based plaster found in the exterior and interior walls of the Venetian buildings. The surface is smooth and slightly shiny, with light contrasts giving a sense of depth.



ecological



interior



exterior



Wall in Marmorino Veneziano Fine



## Marmorino Veneziano Fine

*The classical extra-smooth Venetian Polished Plaster*

This decorative finish has a very smooth surface. It can be burnished with varying degrees of gloss and faint chiaroscuro appearance which convey a pleasant sense of depth.



interior



exterior



## Marmorino Metallic

*Classical Marmorino enriched with pearlescent micas*

In this variation of Marmorino Fine the metallic effect is achieved by introducing a large quantity of pearlescent powder which gives the finish a soft, iridescent look. It's available in Silver, Gold, Copper, or Bronze.



interior



Wall in Marmorino Metallic Gold





## Marmorino Velvet

*A modern opaque Marmorino Veneziano*

This is an opaque version of Venetian Marmorino, produced exclusively by Stucco Italiano. A Damask effect, with soft patterns in relief, can also be obtained with this material.



ecological



interior



## Seta - Silk

*A pearlescent finish reminiscent of precious silk*

It is slightly rough and matte, but with a soft iridescent pearl effect, visible when rays of light hit the wall. It has the chiaroscuro effect and the smooth touch typical of silk.



ecological



interior



## Dolomia

*Coarse plaster with aggregates and golden micas*

Often beauty originates from simplicity, combined with a precious detail. The same happens for this finish: a simple plaster that becomes wonderful when enriched with flakes of natural golden mica.



ecological



interior



exterior



## Stars

*Coarse plaster with aggregates and silver micas*

This finish is very similar to Dolomia, with the only difference of the colour of the micas, which is natural silver.



ecological



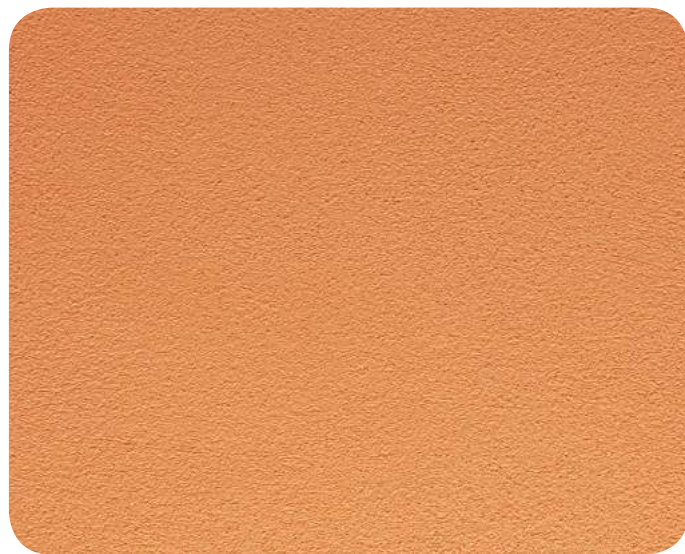
interior



exterior



Staircase wall in Intonachino Veiled



## Intonachino

*Traditional Italian plaster for exteriors*

It is a traditional Italian lime-based plaster for exteriors. This stucco is uniformly rough with slight variations in color intensity. It comes in Fine, Medium and Coarse textures and can generate various different effects.



ecological



interior



exterior





## Beton Stucco

*A concrete effect finish for urban and industrial styles*

It is a modern hydraulic lime and cement-based finish. It is the easiest way to obtain decorative effects reminiscent of smooth and normal concrete. It can be applied on all building surfaces, but also on modern furniture.



ecological



interior



exterior



Urban style furniture and walls in Beton Stucco





Villa with exterior walls in Dilavato



## Tadelakt

*Smooth and glossy traditional Moroccan wall finish*

This waterproof lime-based plaster originated in Morocco, where it is traditionally used in the Hammams and Riads of Marrakech. It is appreciated for its durability and appearance which brings to mind exotic places.



ecological



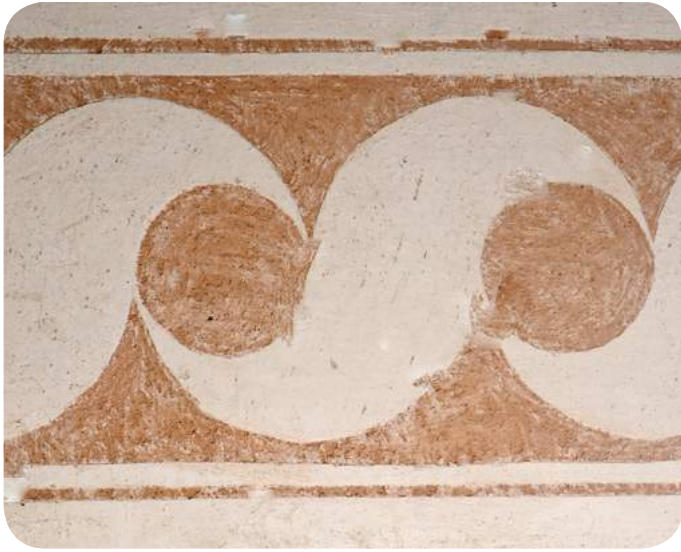
interior



exterior



Walls and sinks in white Tadelakt



## Lime Paint

### *The most ancient mural painting*

A wall painting that creates a welcoming and cozy atmosphere. It has that sense of softness that is rarely found in modern paints. It is most suitable for ancient buildings, rural environments, and decorations.



ecological



interior



exterior



## Dilavato

### *Plaster for exteriors rich in coloured marble aggregates*

This plaster mimicks an antique plaster which has weathered over time. The multi-coloured marble grains rising from its matte surface make this one of the most valuable and impressive stuccos.



ecological



interior



exterior





## Travertino

*An Italian finish from the Renaissance tradition*

This plaster was created to imitate travertine marble, one of the most famous Italian marbles. Two different effects can be achieved with this material: Romano and Toscano, which has a more modern and youthful look.



ecological



interior



exterior



## Terracotta

*The most typical plaster for exteriors in the Venetian tradition*

Among the strongest hydrated lime-based plasters, this rugged finish contains terracotta powders. It is typically used in Venetian exteriors, since it is very resistant in humid environments.



ecological



interior



exterior





Wall in Lava Rain Gold



## Stucco Lava

*A versatile finish for decorative effects*

This extremely versatile finish was created to achieve more than ten distinctly diverse finishes, such as Craters, Juta, Rain, Spazzolato, Tessuto and Crocodile Skin. Although it is lime-based, it is remarkably hard.



ecological



interior



exterior



## Calcite

*A modern alternative to Intonachino*

It is similar to Intonachino but with smooth and rough surfaces that alternate. It has a faint chiaroscuro effect. Being very resistant, it is an excellent solution for classic and modern exteriors, as well as for high-traffic interiors.



ecological



interior



exterior



# SEAMLESS FLOORS





## Pastellone

*Seamless floor finish marrying elegance and resistance*

This finish retains the aesthetics of antique Marmorino while adding the durability that modern day living demands. It's ideal for minimalist environments because of its smooth, uninterrupted continuity.



ecological



interior



Seamless floor in Pastellone, wall in Intonachino





## Epofloor

*The maximum of strength and hardness*

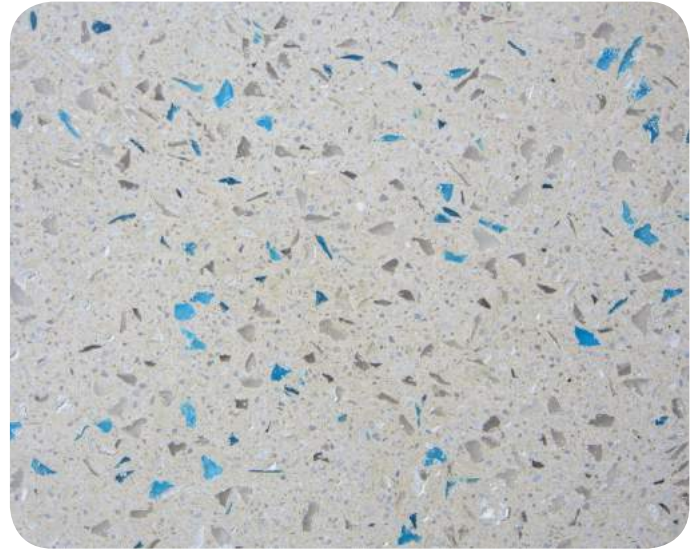
Of all the marmorinos for walking surfaces, this is the strongest. It is therefore particularly indicated for public areas, but it's also an excellent choice for private homes for its elegance. It has a satiny appearance.



interior



exterior



## Magnesite

*A new thin solution for the classical Venetian Terrazzo*

It is a historical material that lost its interest with the arrival of cement. Now it is drawing new attention because it is exceptionally hard and ecofriendly. With it you can obtain a Venetian Terrazzo floor with a thickness of only 10 mm.



ecological



interior

# DECORATIVE PAINTS

These are finishes that can be easily applied by brush, spray or trowel and result in a final rendering of high style and elegance. Among them, we find finishes suitable for all environments: high decorative value solutions for modern environments such as Liberty and Kristalium, or artistic finishes such as Supernova. Other finishes are more classic, like the Terra d'Arte; precious, like Liquid Metal; delicate, as are Dune and Nappa, or as aggressive, like Oxide Metal. Common denominators of all these finishes are the ease of application and the durability, but also a generous decorative contribution. They are all finishes that allow freedom of expression and imagination to the applicator.

## Finishes

- Liberty Epoque
- Liberty Arena
- Spritzcolor
- Liquid Metal
- Oxide Metal
- Ossidato Light & Dark
- Terra d'Arte
- Soft Touch
- Nappa
- Supernova
- Kristalium
- Dune Suede

*Finishes in the pictures (left to right, top to bottom): 1. Interior walls in Nappa; 2. Casino, ceiling in Liberty Epoque, walls in Liberty Arena; 3. Coffee shop wall in Liberty Arena; 4. Bedroom in Liberty Epoque; 5. Bathroom in Ossidato Light; 6. Bedroom in Terra d'Arte*





## Liberty Epoque

*A finish with metallic silk effect*

This breathable acrylic coating recalls the aesthetic sense of the Belle Epoque. A variety of different effects can be achieved with this versatile product. It is available in Golden and Silver which can be tinted in any colour.



interior



Interior wall in Liberty Epoque Satin Lamé





## **Liberty Arena**

*Iridescent effect with a sandy touch*

The quartz micro-spheres give the material a striated relief effect, reminding that of sand. The mineral pigments give the surfaces a pearly and iridescent effect. Many effects can be obtained by different applications.



interior



## **Spritzcolor**

*Matte finish with a myriad of coloured dots*

This is the perfect finish for high-traffic public spaces, where strength and resistance to dirt are essential prerogatives. Easy to apply, it allows to quickly transform any environment with its high decorative tone.



interior



## Liquid Metal

*A finish that recreates the look of melted metal*

Real metal, it becomes as hard as the original. Available in steel, silver, gold, copper, and bronze. It allows obtaining decorations on floors and walls, but it can also cover large surfaces, entire columns, and furniture.



interior



## Oxide Metal

*A material that reproduces the effect of oxidised metal*

The metal comes in paste form and is applied with a spatula or brush. It is then oxidized by an activator, and the oxidizing process blocked with a fixative. It lends itself to covering walls, furniture, and various objects.



interior



Interior wall in Ossidato Light



## Ossidato Light & Dark

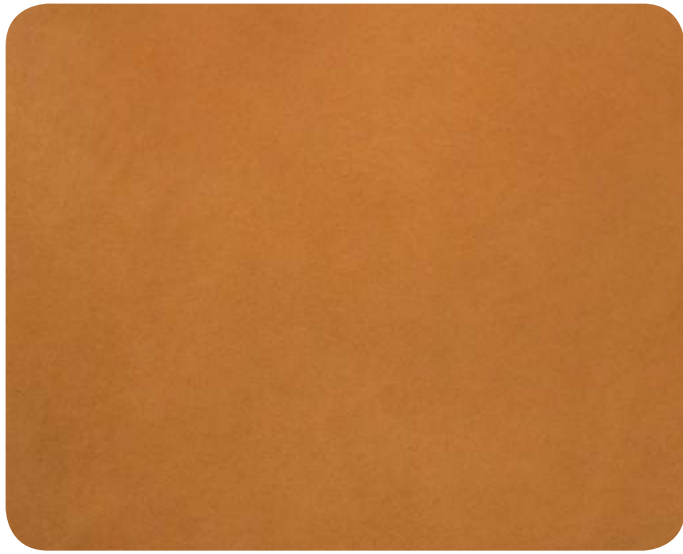
*Washable paint with soft effects for a cozy environment*

Ossidato Dark and Ossidato Light are decorative water-based decorative paints, with an antique effect. Their main features are the ease and speed of application, their highly decorative qualities and washability.



interior





## Soft Touch

*Covers any object with a touch of soft leather*

It is a transparent and opaque varnish that gives a soft touch similar to that of certain leathers for refined objects. It can be applied on any surface, including furnishing objects. It is a durable and completely washable finish.



interior



Columns and walls in Terra d'Arte





## **Terra d'Arte**

*Antique effect evoking the atmospheres of Tuscan villas*

It is characterised by small, nearly white flakes, which contrast with the rest of the tinted paint, thus reproducing an antique-looking finish. The resulting surface has a rough texture, but is soft to the touch.



interior



## **Nappa**

*A finish for interiors reproducing the softness of suede*

It is a matt finish. Its main features are its soft-to-the-touch look and chiaroscuro effect that recalls chamois leather. It has a good versatility which affords different aesthetic effects.



interior



## Kristalium

*A shiny-opaque effect is enhanced by bright crystals*

This finish is characterised by an extraordinary brilliance deriving from small precious crystals and by opaque micro-pigments, which result in a singular shiny-opaque effect.



interior



## Dune Suede

*A versatile finish for different aesthetic solutions*

It realises matt, smooth surfaces with chiaroscuro effects. It can result in sober and elegant solutions, but also in relief finishes that can then be decorated with our metallic waxes for spectacular effects.



interior



Interior wall in Supernova finish



## Supernova

*A finish that leaves free rein to the imagination*

With Supernova each wall can be transformed into an exclusive work of art. It allows endless overlapping of colours by keeping in transparency the underlying ones. Washable, it tends to remain naturally clean.



interior





stuccoitaliano.com

- Costantly updated contents
- Inspirational finishes galleries
- Ecological products section
- Easy search function to find your ideal finish in one click
- Advises and answers to frequently asked questions
- Video lessons on the application of Stucco Italiano's products

Stucco Italiano

Stucco Italiano S.r.l.  
Via Rovereto, 20  
36030 Costabissara  
Italy

+39 347 2469500  
info@stuccoitaliano.it

