

WWW.LIOLACOSMETICS.COM



CUTTING-EDGE LUXURY GREEN COSMETICS

FACE AND BODY SKINCARE PRODUCTS

@LIOLACOSMETICS_LABORATORIES

FROM ITALY WITH ♥

THE MOST LUXURIOUS COSMETICS BRAND IN THE WORLD 2023/24

Luxury green cosmetics **combine natural ingredients with biotechnology** to offer high-end products that are both **effective and environmentally conscious**. These products take advantage of technological advances to improve product quality and effectiveness while **maintaining a natural and sustainable base**.



Liola's Cosmetics won the 2022 Beauty and Wellness award at The Beauty Shortlist, recognizing their excellence and promoting ethical brands and an organic, zero-waste lifestyle, to ensure reliable, high-quality products.



Where science meets nature



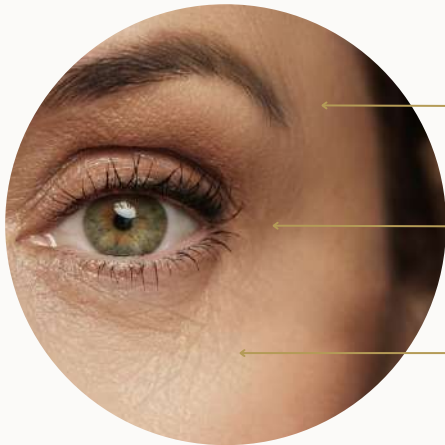
*Liola's Cosmetics promotes natural skin regeneration to counteract the signs of aging without the use of harmful chemicals. Our luxury skincare products **combine biotechnologically advanced natural ingredients.***



AGING PROCESS

It refers to the **natural process of skin aging** that occurs over time due to biological and genetic factors. This type of aging is inevitable and manifests itself through a series of changes in the skin, such as loss of elasticity, the appearance of wrinkles, decreased collagen production and other age-related transformations.

In the context of cosmetics, many products are developed to help mitigate or slow down these visible signs of physiological aging. Anti-wrinkle creams, hydrating serums, and other anti-aging treatments are designed to keep skin hydrated, improve elasticity, and reduce the appearance of wrinkles, **helping to preserve younger, healthier skin.**



REDUCED HYDRATION

The production of hyaluronic acid decreases dramatically

STONE REDUCTION

Increase in senescent muscle cells which negatively affect surrounding cells.

WRINKLES APPEAR VISIBLE

Loss of essential skin properties, such as firmness and elasticity.



Start your beauty journey
with our luxury green skincare routine

Facial cleansing

Clear (micellar water)



The product is a **delicate 3 in 1** that refreshes, cleanses and removes make-up. It is suitable for delicate skin as it does not damage the dermal-lipid barrier and hydrates the skin, while removing make-up and impurities.

Active ingredients:

β

Biotechnological polysaccharides of plant origin.

They have the ability to form a protective film on the surface of the skin which slows down the evaporation of water from the deep layers



Trace elements (zinc and magnesium)



Non-ionic surfactant

obtained from renewable raw materials of plant origin (coconut oil)



How to use: Apply via a pad to the face and eyes morning and evening

* The graphic representation and textures of the products are created for the sole purpose of illustrating the product and are purely indicative.

Facial cleansing

Pure (cleansing emulsion)

Versatile product that can be used as a delicate cleanser for the face and eyes, as a cleansing mask or a delicate and soothing cream for the face.

Active ingredients:



Complex with hydrolysed extracts of algae and polysaccharides

Highly hydrating, nourishing, emollient.



Almond oil ideal for dry skin



Calendula extract anti-inflammatory properties and healing effects exerted by triterpene esters

How to use:

- As a cleanser: apply via a pad to face and eyes morning and evening.
- As a cleansing mask: apply to the face, massage the affected area with circular movements outwards and rinse
- As a face cream: apply with upward circular movements



Face and body peeling

Turnover (micronized exfoliant)



A **face and body scrub** based on vegetable granules derived from almond shells exfoliates and nourishes the skin, leaving it soft and smooth. Deep and delicate cleansing allows the cream to hydrate and nourish the skin thanks to Almond Oil and Shea Butter.

Active ingredients:



Vegetable granules

obtained from shelling almonds. The product obtained is ground to obtain a grain size suitable for delicate exfoliation.



Shea butter

healing, emollient, elasticising, hydrating, antioxidant, soothing and re-epithelising, film-forming and protective properties.



How to use:

Apply the exfoliating cream to your cleansed face 1 or 2 times a week and massage gently with circular movements. Gently rinse the remaining portion on the skin with warm water.

Rebalancing face and body

Defender (crema ph)



Moisturising and pH regulating cream, easy to apply on the skin, also suitable for sensitive skin. For face and body. It reduces redness and improves the texture of the skin, leaving it smooth and velvety without marks.

Active ingredients:

F

Vitamin F

promotes the well-being of the cell membrane, stimulates the regeneration of skin cells and nourishes the skin, giving it elasticity and softness.



Lactic acid

pH regulator, with exfoliating and hydrating action.



How to use:

Apply a little product to the face or body after cleansing the skin.
Apply before any face cream or serum or body cream.

Face treatment

Golden Hour (facial oil)



An oil serum that **combines precious vegetable oils**, such as soybean, sesame and grape seed oil, suitable for all skin types, even the most sensitive. Thanks to the **nutritional and antioxidant properties**, the skin feels soft and velvety to the touch. Perfect for a relaxing facial massage.

Active ingredients:



Grape oil

Ideal for hydrating and soothing sensitive, dry and irritated skin.



Sesame oil

It has an antiseptic, antibacterial and soothing action, useful in case of sunburn, dermatitis and acne. It has many benefits on dry and mature skin and, thanks to its nutrients and antioxidants.

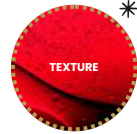


How to use:

Apply one or two drops to your fingertips, then apply the product to your face and massage with circular movements (apply a little product at a time).

Eye contour treatment

Red Sea (eye contour serum)



The **lifting eye contour serum** with three molecular weight hyaluronic acid contains chamomile water, rosehip extract and vitamin B12, for radiant, toned and hydrated skin.

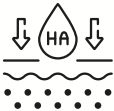
The **lightweight formula** absorbs quickly.

Active ingredients:



Vitamin B12

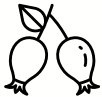
Involved in the production of new skin cells, the regeneration of existing cells and the maintenance of a healthy skin barrier.



Hyaluronic acid

3 molecular weights:

- Intensive hydration
- Reduction of signs of aging
- Volumizing effect
- Soothing action



Rosehip

nourishing and regenerating properties for the skin. Rich in vitamin C, antioxidants and essential fatty acids,

How to use:

Apply morning and evening to the eye contour area with upward circular movements



Face treatment

Black diamond

(face and eye contour serum)

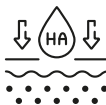


It works to counteract free radicals, **protect the skin** from damage caused by UV rays and pollution, hydrate, reduce the signs of aging and **improve skin elasticity**.

Active ingredients:



Coenzyme Q10
acts as an antioxidant.



High molecular weight hyaluronic acid
Creates a protective film on the skin, improving and prolonging hydration over time.



Vitamin A
Helps prevent skin aging caused by sun exposure.



Aloe Vera
regenerating and effective in the treatment of dehydrated skin.

How to use:

Apply morning and evening to a well-cleaned face and eye contour with upward circular movements before applying any face cream.



Face treatment

Light (moisturizing face cream)



Delicate and easily absorbed cream. With Ceramides, to keep the skin elastic and young, and with Moringa Extract, to protect the skin from sun rays and pollution. It offers anti-aging support to stressed skin, with hydrating and anti-oxidant properties.

Active ingredients:



Biotechnological polysaccharides of plant origin.

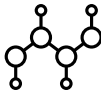
They have the ability to form a protective film on the surface of the skin which slows down the evaporation of water from the deep layers



Trace elements (zinc and magnesium)



Moringa extract fights the effect of exhaust fumes and UV rays by preventing the deposition of pollution microparticles.



Ceramides stimulate the synthesis of connective proteins of the skin barrier.

How to use:

Apply morning and evening to cleansed skin of the face and neck, with upward circular movements.



The graphic representation and textures of the products are created for the sole purpose of illustrating the product and are purely indicative.



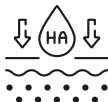
Face treatment

Rich (nourishing face cream)



With Hyaluronic Acid and Blackcurrant. **Cream with a soft and delicate texture**, with anti-aging, nourishing and hydrating action. It keeps the skin toned and compact, reducing the signs of aging, making it silky and soft to the touch.

Active ingredients:

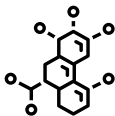


High and low molecular weight hyaluronic acid

Creates a protective film on the skin, improving and prolonging hydration over time.



Multifunctional peptide reduces expression lines by improving muscle contraction, acting both pre-synaptically and post-synaptically, while minimizing skin cell aging.



Enzyme complex defends the skin from pollution, reducing skin irritation and improving firmness by 22% after 8 weeks. *

How to use:

Apply morning and evening to cleansed skin of the face and neck, with upward circular movements.

**in vivo studies*



Face treatment

Outface (sports face cream)



With Mimosa, Calendula and Aloe extracts. **A light and easily absorbed cream**, ideal for use when practicing sports outdoors or indoors.

Active ingredients:



Shea butter

healing, emollient, elasticising, hydrating, antioxidant, soothing and re-epithelising, film-forming and protective properties



Aloe Vera

regenerating and effective in the treatment of dehydrated skin.



Mimosa extract improves superficial microcirculation, promoting the exchange between blood and tissues and limiting the formation of swelling.



Almond oil ideal for dry skin

How to use:

Apply the cream on clean skin of the face for 30 min. before sporting activity and in the evening on cleansed skin.



Face treatment

Exagerate (one of a kind face cream)

It is an **innovative hydrating and protective treatment for the skin** of the face and neck which, thanks to the **synergy of plant** active ingredients in a base with a delicate and soft texture, restores the right level of **hydration to the skin throughout the day**.

Active ingredients:

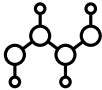
β

Biotechnological polysaccharides of plant origin.

They have the ability to form a protective film on the surface of the skin which slows down the evaporation of water from the deep layers



Trace elements (zinc and magnesium)



Ceramides stimulate the synthesis of connective proteins of the skin barrier.



Innovative emulsifier created from beeswax and jojoba wax. The formula is enriched with vegetable glycerin, which absorbs moisture and returns it to the skin, allowing good spreadability. The emulsion has a pleasant, non-sticky and moisturizing texture and is stored safely.

How to use:

Apply the cream to cleansed skin every morning before applying makeup and in the evening after cleansing the skin of the face



Composed of **emulsifiers of vegetal origin** (coconut oil and an innovative sensorial emulsifier created from beeswax and **jojoba wax**, extremely flexible and **adaptable to the climate**, which creates active textures, characterised by a particularly **low residual film** and a light sensation on the skin, providing hydration and pleasure upon application). Contains a 100% natural texturizing agent based on a complex of **3 functionalized waxes: Jojoba Wax, Sunflower Seed Wax, Mimosa Wax**. These 3 waxes have been transesterified in the presence of vegetable polyglycerin, giving **new sensorial characteristics**: physical properties halfway between those of liquid waxes and those of solid waxes, **softness** and spreadability upon application, a sensation of comfort on the skin that lasts all day. All this creates an elegant and light sensorial profile, giving the emulsion a pleasant, **non-sticky** and hydrating texture. With the addition of vegetable glycerin, a humectant substance **capable of absorbing humidity** and then returning it to the skin, which also guarantees excellent spreadability. It is a properly stored, carefully researched and safe formula.

Body treatment

Shaper

(nourishing and slimming body cream)

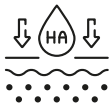
Cream with a **delicate and easily absorbed texture**, rich in active substances that improve the orange peel appearance of the skin, making it **more toned, compact, elastic, smooth and velvety**.



Active ingredients:



Caffeine has a known thermogenic and lipolytic action, very useful in the cosmetic treatment of cellulite.



High and low molecular weight hyaluronic acid

Creates a protective film on the skin, improving and prolonging hydration over time.



Horsetail extract for the prevention of skin aging and cellulite, to tone, firm, remineralize and purify the skin.



Bromelain cyclodextrin complex

reduces skin inflammation and hydrates dry skin, improving its appearance.

How to use:

Apply twice a day to cleansed skin of the body with a light massage.



Body treatment

Silker (hydrating and elasticizing body cream)



With sweet almond oil, wheat germ, allantoin, aloe and hop extracts.

Soft and silky specially designed to elasticise, tone and firm the skin.

The special active ingredients promote the synthesis of collagen and elastin.

Active ingredients:



Beeswax Emollient and anti-dehydrating



Wheat germ oil Precious antioxidant



Hoops extract to safeguard collagen fibers from damage induced by free radicals



Borage oil soothing properties make the skin soft, silky and regenerated.



Coconut oil hydrating and antimicrobial action.

How to use:

Apply twice a day to cleansed skin of the body with a light massage.



* The graphic representation and textures of the products are created for the sole purpose of illustrating the product and are purely indicative.



The beauty of being unique

Liz avishajini
(Ballerina at Berlin Ballet)
#skincoachteam member





MADE IN ITALY

www.liolacosmetics.com

@LIOLACOSMETICS_LABORATORIES