



NIPI WAS ESTABLISHED IN ITALY IN 2014  
WITH THE MISSION OF UPGRADING  
ALL THE BENEFITS OF REAL DOWN  
USING CUTTING-EDGE TECHNOLOGY  
WHILE CARING FOR THE ENVIRONMENT  
MAKING EARTH A BETTER PLACE FOR  
NOW AND FUTURE GENERATIONS

REAL DOWN FABRIC



# THE WORLD'S FIRST DOWN FABRIC

MADE IN ITALY

THE ULTIMATE IN WARMTH  
NOW A FABRIC

SIMPLY CUT AND SEW



## DOWN FABRIC

DELIVERS MAXIMUM WARMTH  
LESS BULK & EVEN DISTRIBUTION

## DOWN CHANNELS



CREATE COLD SPOTS  
ADD BULK & LIMIT DESIGN



# BENEFITS

## END CONSUMER

- ▶ ELIMINATION OF DOWN SEEPAGE THROUGH FABRIC AND SEAMS
- ▶ EASY CARE, MACHINE WASHABLE OR DRY CLEANABLE
- ▶ RDS CERTIFIED: SUSTAINABLY SOURCED DOWN  
OEKO-TEX CERTIFIED: SAFE AND NON TOXIC EVEN FOR CHILDRENSWEAR
- ▶ GRS CERTIFIED: 100% POST CONSUMER RECYCLED DOWN (THINDOWN RECYCLED)

## DESIGN FLEXIBILITY

- ▶ NOW THIN SILHOUETTES ARE INCREDIBLY WARM
- ▶ DOWN NO LONGER LIMITED TO JACKETS AND OUTERWEAR
- ▶ CHOOSE ANY PATTERN, ANY QUILT, ANY EMBROIDERY
- ▶ REMOVING THE NEED FOR DOWN BAGS AND/OR CHANNELS DELIVERS TOTAL DESIGN FREEDOM

## PRODUCTION AND FINANCIAL

- ▶ CHANNELS AND DOWN BAGS ARE NO LONGER NECESSARY  
LABOR COSTS ARE THEREFORE REDUCED BY UP TO 25%
- ▶ PRODUCTION NO LONGER LIMITED TO DOWN FACTORIES.  
EVERY FACTORY CAN NOW PRODUCE DOWN GARMENTS
- ▶ THIS NEW FLEXIBILITY MEANS FASTER PRODUCTION  
RESULTING IN SHORTER LEAD TIMES

# WHY THINDOWN

INNOVATIVE  
TECHNOLOGY  
RESOLVES  
DOWN  
SEEPAGE

THINDOWN  
ELIMINATES  
MIGRATION





MACHINE  
WASH OR  
DRY CLEAN  
DEPENDING  
ON SHELL  
FABRIC



WASH ONLY AT 40°C WITH  
GENTLE SOAP FOR WOOLENS



DO NOT USE ANY BLEACH



DRY CLEAN MILD ANY SOLVENT  
EXCEPT TRICHLOROETHYLENE



ONLY WARM IRON 110°C  
OR BELOW. WOOL SETTING



TUMBLE DRY NORMAL  
LOW HEAT



DO NOT WRING

WATER WASHING:

**USE ONLY GENTLE DETERGENT FOR WOOLENS  
USE ONLY 1/3 THE NORMAL AMOUNT  
WASH ONLY AT 40°C OR BELOW**

DRY CLEANING:

**MILD DRY CLEANING WITH ANY SOLVENT  
EXCEPT TRICHLOROETHYLENE**

DOWN  
FABRIC  
148/145 CM



THINDOWN THE REAL DOWN FABRIC

## THINDOWN WEIGHTS

GRAMS/METER SQUARED  
ROLLS OF 15-50M



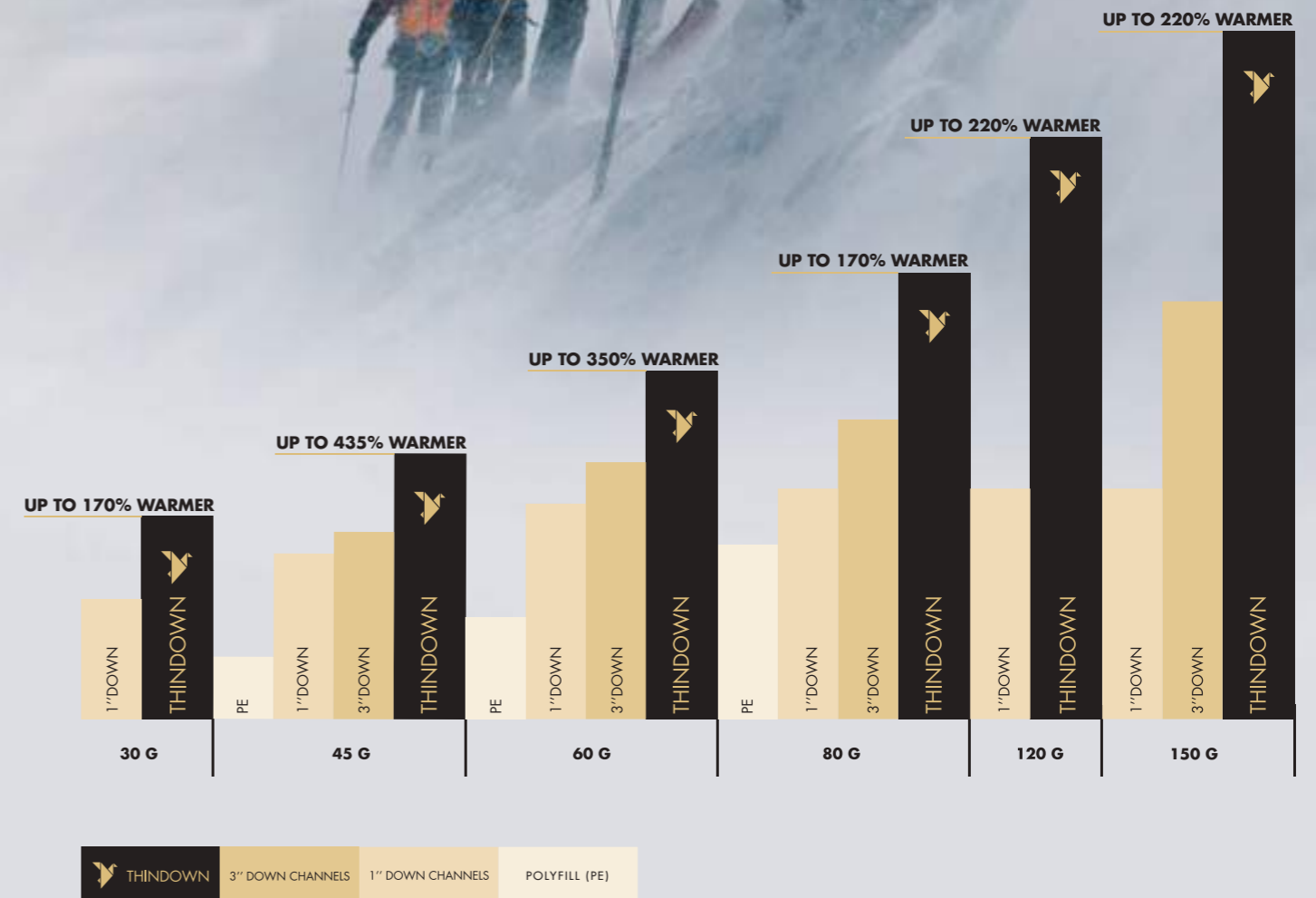
MOQ 1 ROLL  
CUSTOM CODE 6701 0000

# THE WARMEST INSULATION AVAILABLE

## THERMAL TEST DATA

**CLO:** TECHNICAL UNIT OF MEASURE FOR THERMAL INSULATION  
HIGHER RATING = GREATER WARMTH

ALL TESTING PERFORMED BY **IDFL** LABORATORIES  
ALL SAMPLES TESTED WITHIN IDENTICAL SHELL FABRIC





# THINDOWN IDENTITY

HANGTAG &  
SEW IN LABEL

THINDOWN THE REAL DOWN FABRIC





# OPTIONAL DOWNPROOF MEMBRANE

THINDOWN CAN BE  
LAMINATED WITH A BREATHABLE,  
DOWNPROOF, WINDPROOF  
AND WATERPROOF MEMBRANE

RECOMMENDED WHEN USING  
CASHMERE, WOOL, COTTON  
OR ANY OTHER OPEN FABRIC



INTRODUCING  
**WARMTH**  
IN  
**MOTION**



THINDOWN  
◀ FLEX ▶



# THINDOWN FLEX

WIDTH  
145 CM

AVAILABLE IN 30 G/M<sup>2</sup>  
ROLLS OF 50 METERS



MOQ - 1 ROLL  
CUSTOM CODE 6701 0000

THINDOWN FLEX

# THINDOWN FLEX IDENTITY

HANGTAG &  
SEW IN LABEL



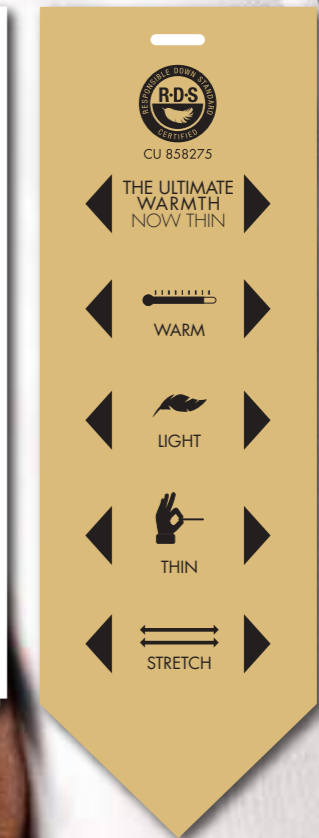
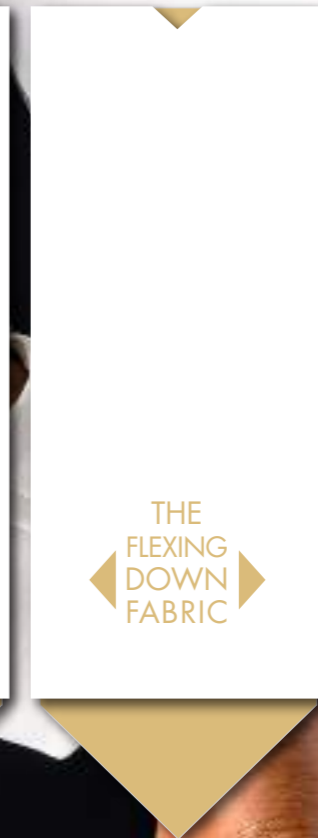
THINDOWN FLEX

LABEL



FOLDED

HANGTAG





# THE BLEND OF REAL DOWN

+

# PERFORMANCE OF POLYESTER

60% PURE WHITE DOWN 90/10  
20% PL 20% PET/PE



THINDOWN ACTIVE

# THINDOWN ACTIVE 148/145 CM



AVAILABLE IN 45,60,80 G/M<sup>2</sup>  
25-50 M ROLLS

THINDOWN ACTIVE



CU 858275



MOQ 1 ROLL  
CUSTOM CODE 6701 0000



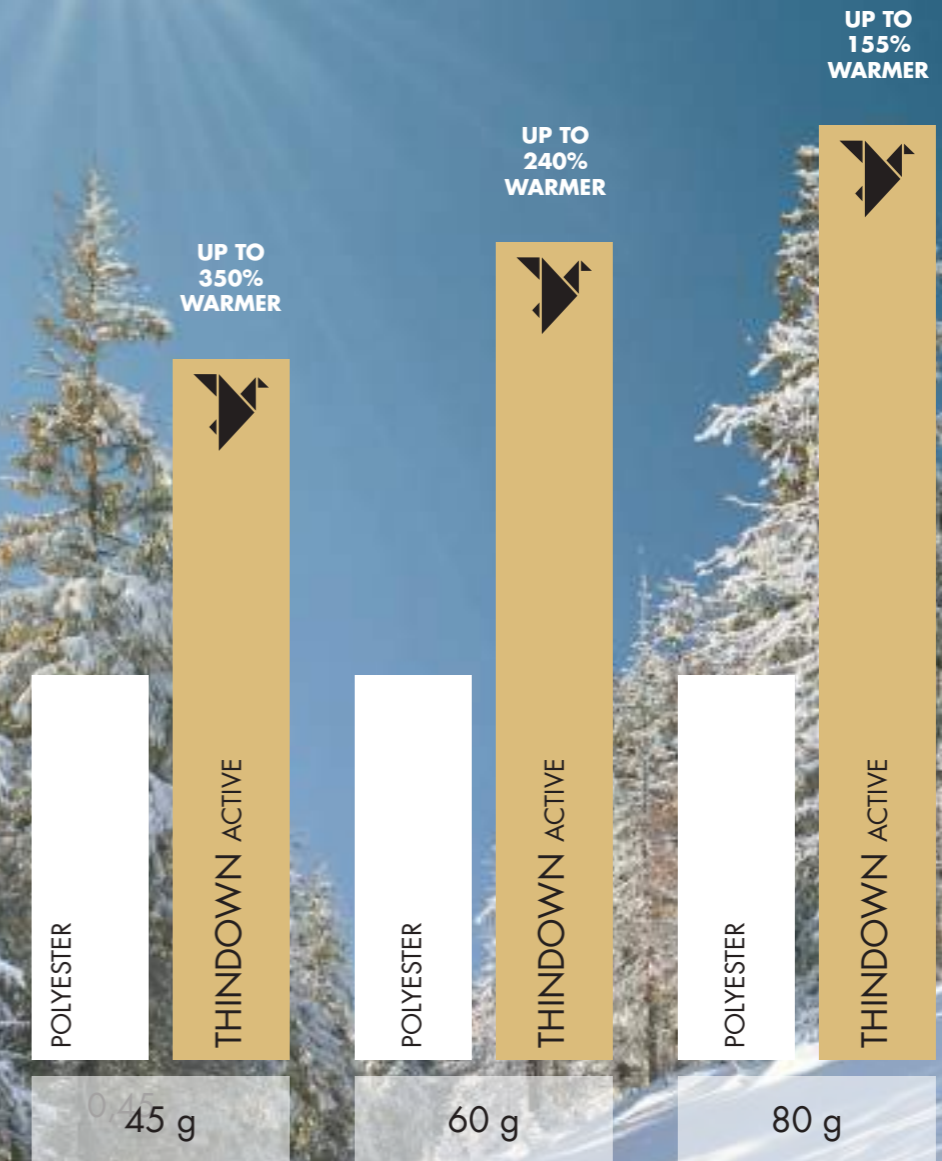
# THIN SUPERIOR WARMTH CONFIRMED

## THERMAL TEST DATA

**CLO:** TECHNICAL UNIT OF MEASURE FOR THERMAL INSULATION  
HIGHER RATING = GREATER WARMTH

ALL TESTING PERFORMED BY **IDFL** LABORATORIES  
ALL SAMPLES TESTED WITHIN IDENTICAL SHELL FABRIC

## THERMAL TEST DATA



OVER 350% WARMER THAN POLYESTER ALONE.  
NO COLD SPOTS.

THINDOWN ACTIVE

# THINDOWN ACTIVE IDENTITY



HANGTAGS &  
SEW IN LABELS





# INTRODUCING **SUSTAINABLE WARMTH**

100% RECYCLED NATURAL DOWN  
REDUCED ENVIRONMENTAL IMPACT  
REDUCED CARBON FOOTPRINT  
LOW ENERGY IMPACT  
REDUCED WASTE

# THINDOWN RECYCLED

148/145 CM



AVAILABLE IN 45g & 60g  
25-50 METER ROLLS



MOQ 1 ROLL  
CUSTOM CODE 6701 0000



# THINDOWN RECYCLED IDENTITY

HANGTAG &  
SEW IN LABEL

LABEL



FOLDED



HANGTAG





ALL THINDOWN PRODUCTS  
ARE RDS CERTIFIED



CU 858275

GUARANTEEING  
OUR DOWN IS  
FULLY TRACEABLE &  
SOCIALY RESPONSIBLE

## SHELL FABRIC REQUIRED SPECIFICATIONS

YARN COUNT	Dernier Decitex	20 22	30 33	40 44	60 66	70 77
THREAD COUNT	(Picks/cm) (Picks/inch)	380 150	350 140	330 130	300 120	250 100

### STORAGE

STORE THINDOWN ROLLS HORIZONTALLY WHERE  
THEY CAN BREATHE HUMIDITY TO GAIN LOFT

### CUTTING

CUT WITH SCISSORS, KNIFE, ULTRASOUND  
OR VACUUM TABLE. NO LASER CUTTING

### SEWING

CAN BE SEWN WITH ANY MACHINE,  
PLEASE PRE-TEST NEEDLES AND THREADS.  
SUGGESTED NEEDLE SUK/SIZE 70-80  
LONGER GARMENTS NEED A  
HIDDEN STITCH EVERY 20"

### IRON/PRESS/HEAT

IRON TEMPERATURE LOWER THAN 110 °C.  
USE WOOL SETTING