



YOUR SATISFACTION
IS OUR AIM



IN THE HEART OF VALTELLINA



FOUNDATION: 1986 – 35 years of activity

TEAM: 23 people

SURFACE: 2100 m² indoor + 5000 m² outdoor

BRANCH: precision mechanics

LOCATION: Talamona (Sondrio), Italy



OUR EXPERTISE

3-4-5 axes CNC milling machines

3-4 axes turning machines

Tangential grinding

Traditional milling and turning machines

Mechanical assembly

Special machines construction



MACHINE PARK

MACHINE PARK	BRAND	SIZE	QUANTITY
4-axes FMS 20 pallets horizontal machining center	Okk	800x500x500	2
5-axes machining center	Dmg	500x600x600	2
5-axes machining center	Spinner	465x530x1530	1
Vertical machining center	Feeler	550x400x1000	2
4-axes vertical machining center	Robodrill	500x400x330	1
CNC lathe machine	Imts	Ø 350x600	2
CNC lathe machine	Takisawa	Ø 250x600	1
CNC lathe machine	Dmg	Ø 450x1000	1
Traditional milling machine			2
Traditional parallel lathe machine			2
Drill press			5
Automatic hacksaw			1
Manual 3D machine for quality assurance	Brown & Sharpe - Tesa		2
Automatic 3D machine for quality assurance	Dea – Hexagon		3
CAD-CAM stations	hyperMILL		2



DIMENSIONS

MINIMUM TURNING
SIZE



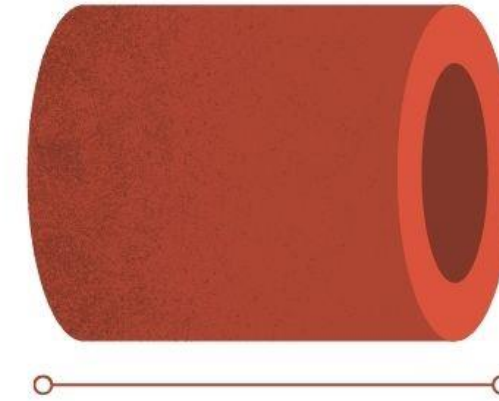
Ø 5 mm

MAXIMUM TURNING
SIZE



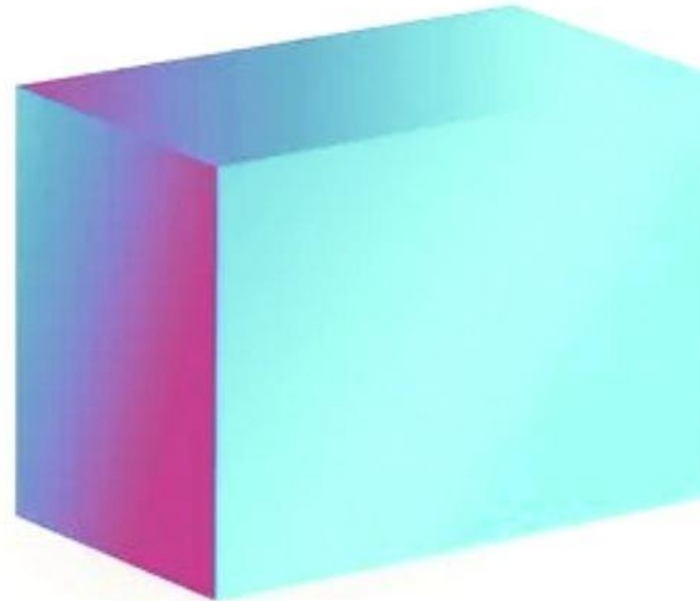
Ø 500 mm

MAXIMUM TURNING
LENGTH



600 mm

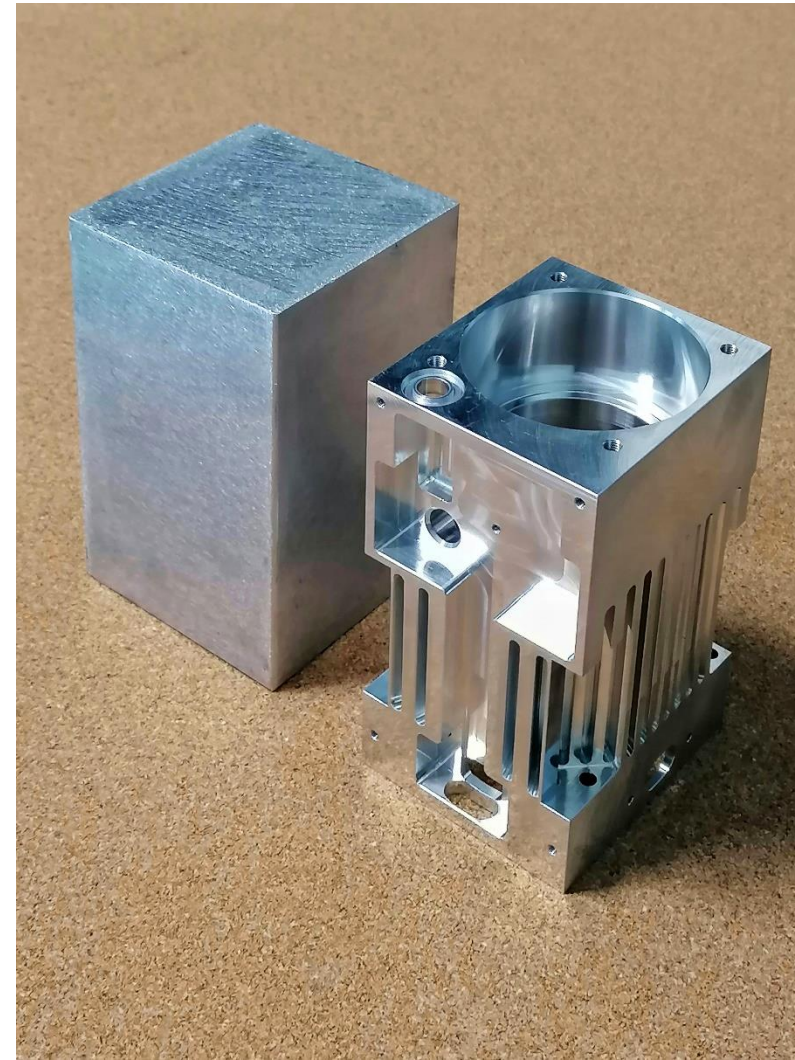
MAXIMUM MILLING
SIZES



465 x 530 x 1530 mm

LE NOSTRE LAVORAZIONI

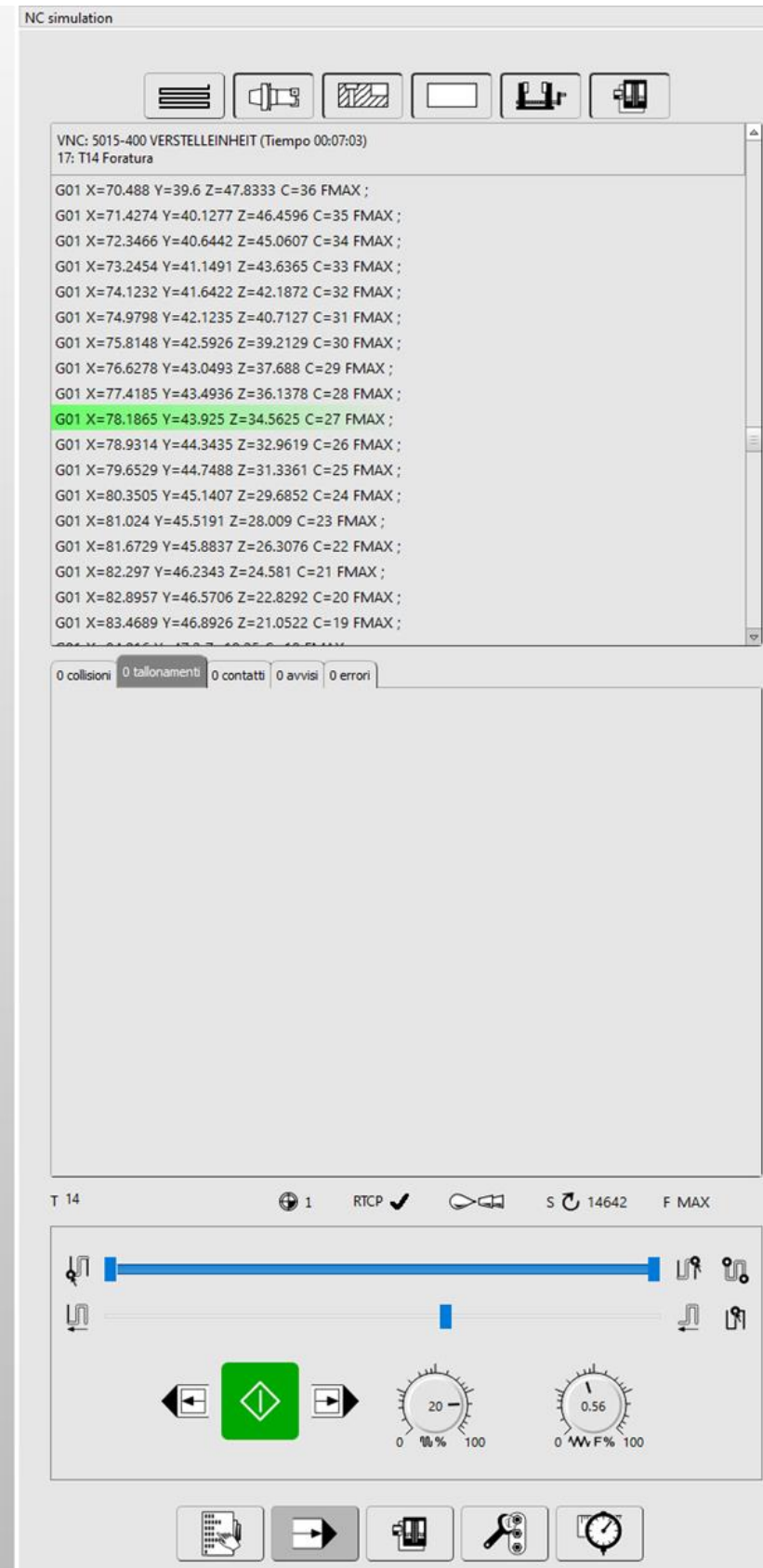
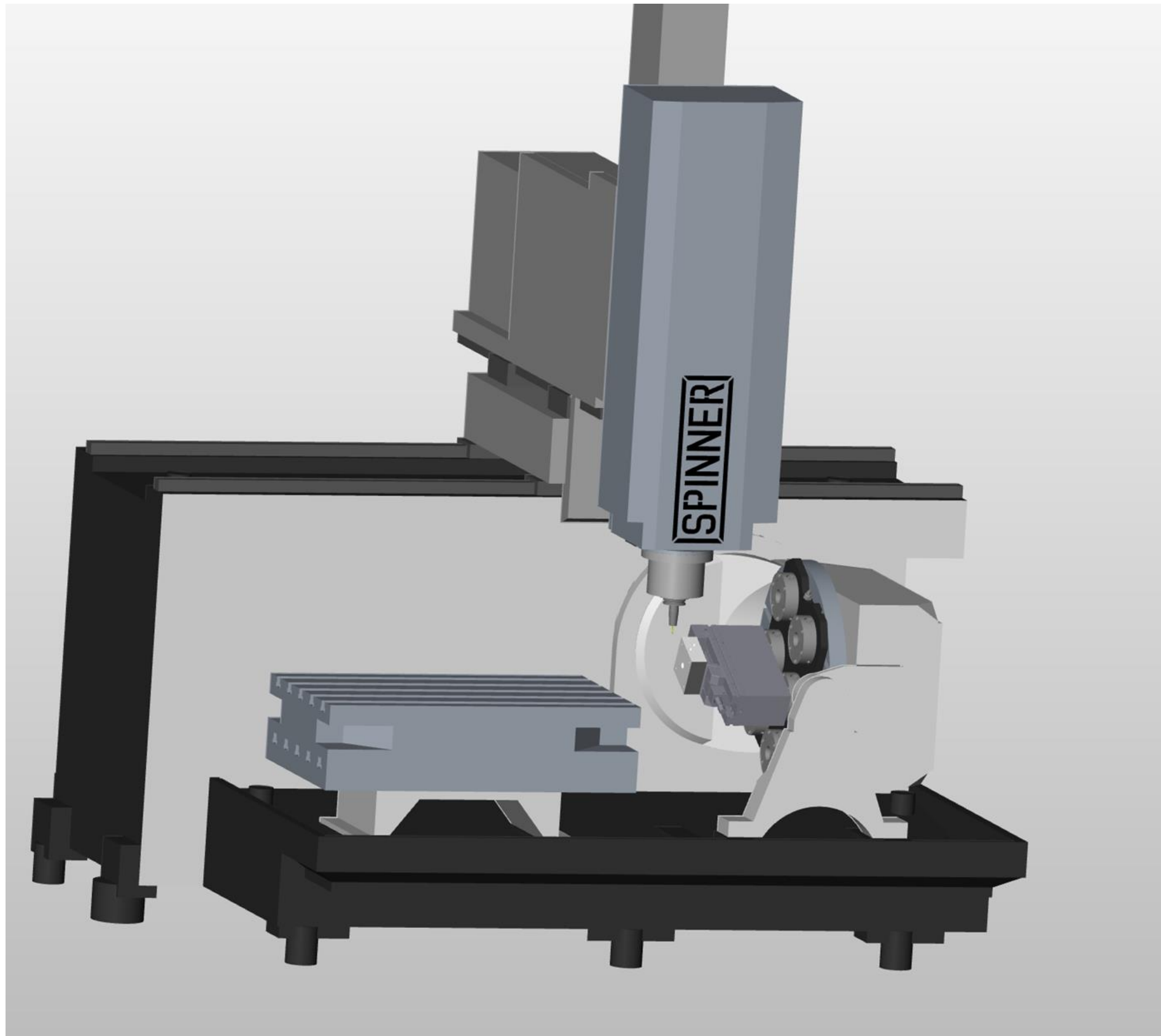
Machining ranging from
single lot
to medium/large series lots



Machining of all types of materials



VIRTUAL MACHINING CENTER



We have upgraded our CAD/CAM system by virtualizing our machines through the new **hyperMILL VIRTUAL Machining** simulation software.

This allows us to analyze, speed up and optimize our machining and production processes, virtually recreating real machining situations and ensuring complete connection and synchronization with the machine tool.

Then the great advantage that it assures us is that it automatically corrects and solves problems of wrong programming and avoids consequent collisions on the machine.

WE WORK IN DIFFERENT COUNTRIES AND IN MANY FIELDS

Robotics and Automation

Electric motors

Telecommunications

Machine tools

Railways

Oil & Gas

Turbine blades

Medical sector machines

Machines for Food

Glass processing machines

Packaging machines

Gas and fuel distributors

Lifting systems

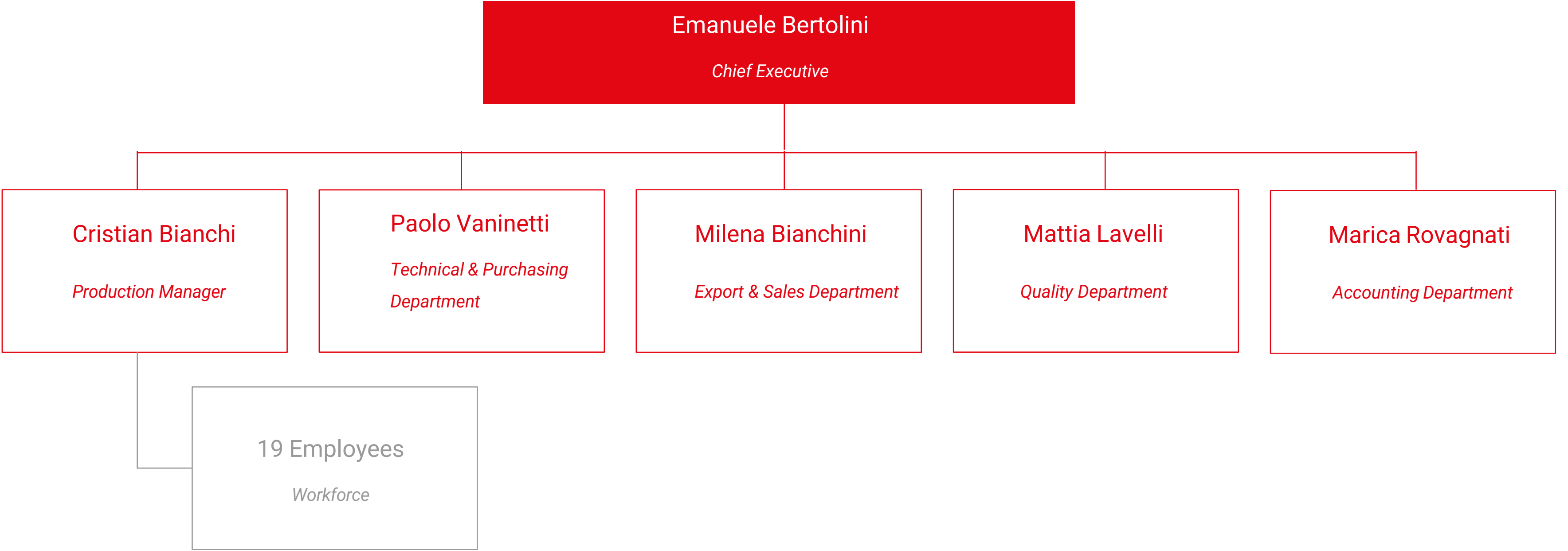
Lighting systems

Varnishing systems

Mechatronics systems for cars,
commercial and agricultural vehicles



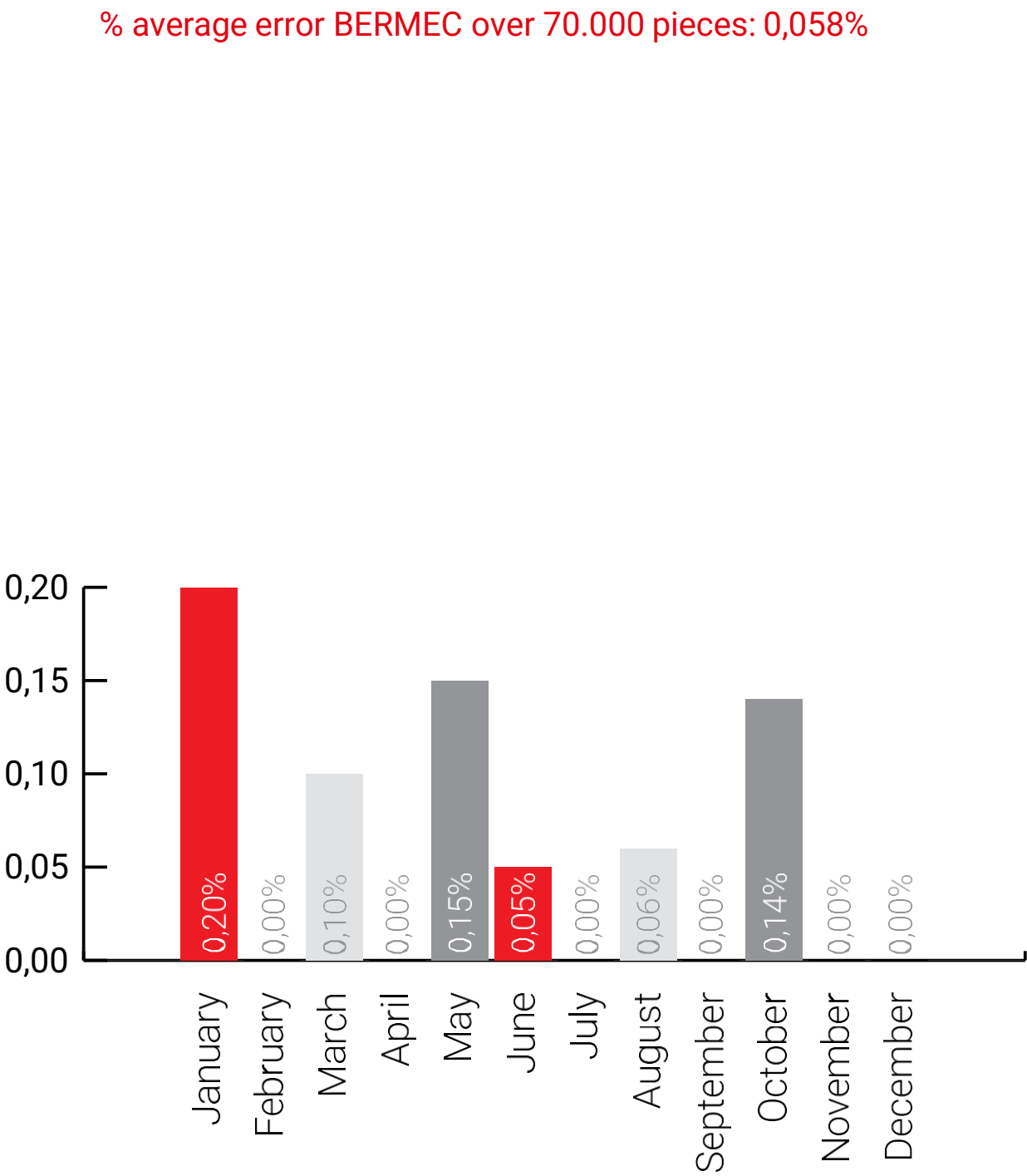
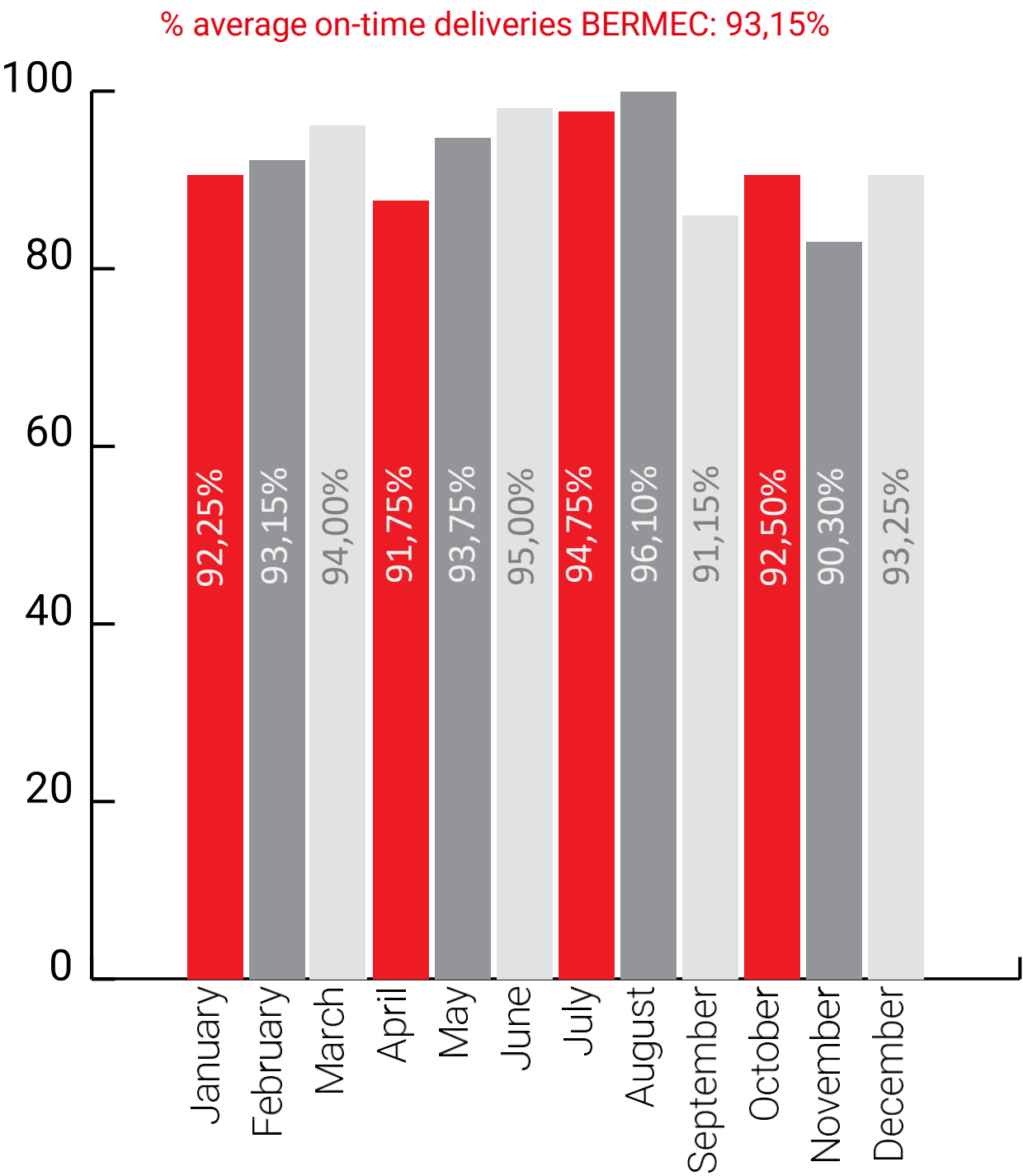
23 PEOPLE AT YOUR DISPOSAL



QUALITY AND DELIVERIES ALWAYS UNDER CONTROL

2021 PERFORMANCE

70,000 total pieces manufactured | 1,280 different items manufactured | 3,300 setups completed



QUALITY DEPARTMENT



Climatized quality control room with five 3D point-to-point coordinate measuring machines for quality assurance



CERTIFICATIONS



MOCA/FCM

CERTIFICATO ◆ CERTIFICADO ◆ CERTIFIKAT ◆ CERTIFICATE ◆ 認証證書 ◆ ZERTIFIKAT



CERTIFICATO

Nr. 50 100 3762 Rev.008

SI ATTESTA CHE / THIS IS TO CERTIFY THAT

IL SISTEMA DI GESTIONE PER LA QUALITÀ DI
THE QUALITY MANAGEMENT SYSTEM OF



BERMEC PRECISION S.r.l.

SEDE LEGALE:
REGISTERED OFFICE:

CORSO G. MATTEOTTI 8/A
IT - 23900 LECCO (LC)

SEDE OPERATIVA:
OPERATIONAL SITE:

VIA TODESCA 137
IT - 23018 TALAMONA (SO)

È CONFORME AI REQUISITI DELLA NORMA
HAS BEEN FOUND TO COMPLY WITH THE REQUIREMENTS OF

UNI EN ISO 9001:2015

QUESTO CERTIFICATO È VALIDO PER IL SEGUENTE CAMPO DI APPLICAZIONE
THIS CERTIFICATE IS VALID FOR THE FOLLOWING SCOPE OF APPLICATION

Fabbricazione di parti metalliche mediante lavorazioni meccaniche di
precisione su specifica del cliente (IAF 17)

Manufacture of metallic parts by precision machining according to
customer specification (IAF 17)

Per l'Organismo di Certificazione
For the Certification Body
TUV Italia S.r.l.

Validità / Validity

Dal / From: 2021-12-03
Al / To: 2024-11-13



SGQ N° 049A

Membro degli Accordi di Mutuo Riconoscimento
CA, IAF e ILAC
Signatory of CA, IAF and ILAC Mutual
Recognition Agreements

Francesco Scariata
Divisione Divisione Business Assurance
Business Assurance Division Manager

Data emissione /
Issuing Date
2021-12-03

PRIMA CERTIFICAZIONE / FIRST CERTIFICATION: 2004-01-20

"LA VALIDITÀ DEL PRESENTE CERTIFICATO È SUBORDINATA A SORVEGLIANZA PERIODICA A 12 MESI E AL RISAME COMPLETO DEL SISTEMA DI
GESTIONE AZIENDALE CON PERIODICITÀ TRIENNALE"
"THE VALIDITY OF THE PRESENT CERTIFICATE DEPENDS ON THE ANNUAL SURVEILLANCE EVERY 12 MONTHS AND ON THE COMPLETE REVIEW OF
COMPANY'S MANAGEMENT SYSTEM AFTER THREE-YEARS"

TUV Italia • Gruppo TÜV SÜD • Via Carducci, 125, Pal. 23 • 20089 Sesto San Giovanni (MI) • Italia • www.tuvsud.com/it

TUV®



FOOD CONTACT MATERIALS

What is the MOCA/FCM certification?

The MOCA/FCM certification is the Italian certification for materials destined to come into contact with food. This is essential for a company like Bermec, since the components we produce for the food industry necessarily need to be suitable for food contact.

Why is the MOCA/FCM certification so important?

The Legislative Decree n. 29 from 10 February 2017 imposes penalties for the violation of the European regulations on objects intended for food contact. A company like Bermec, which aims for excellence as its standard and which is working to an ever-increasing extent on food industry components, sees this certification as an additional step toward the European leadership in precision machining.

The audits performed as a prerequisite for the issue of the certification confirm our ability to manage risks relating to both the shedding of substances and the performance of components; as a matter of fact, we are able to avoid and prevent any quality impairment and to guarantee health safety of the foods the machined parts come into contact with.

The MOCA/FCM certification provides audited documentation, allowing readiness to inspections and to the customers' requests, but above all it enables companies to stand out in their markets by displaying high standards and reliability.

By obtaining the MOCA/FCM certification, Bermec takes another step toward the excellence in precision machining.



REFERENCES



Aasted ApS
Denmark



General Electric
Italy, Germany,
Sweden



Trimill Machine Tools
Czech Republic

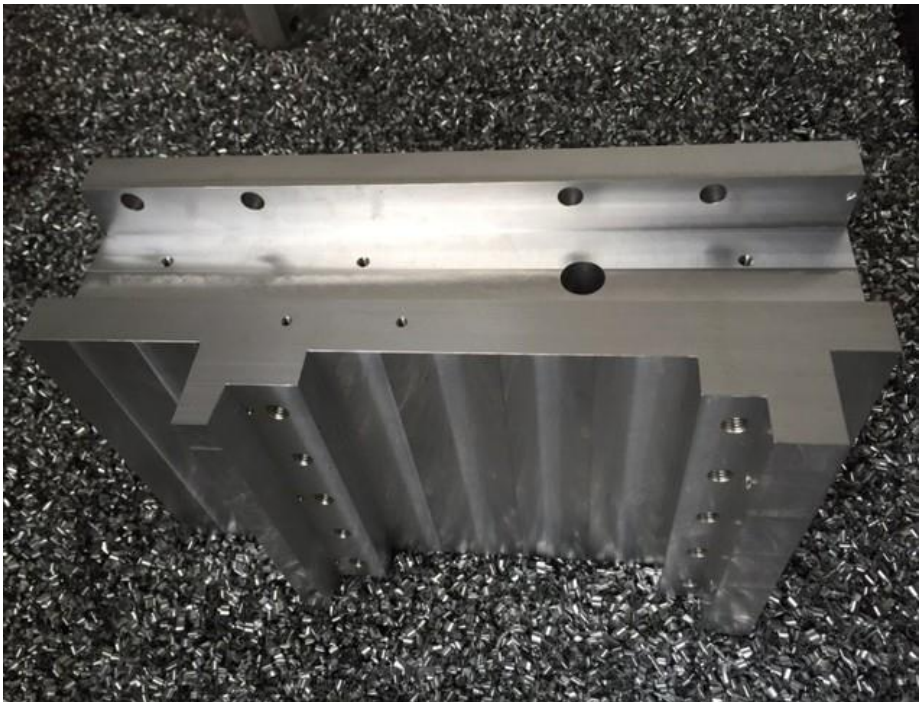


Technai Team
Direct-Drive
Motion Technology
Italy

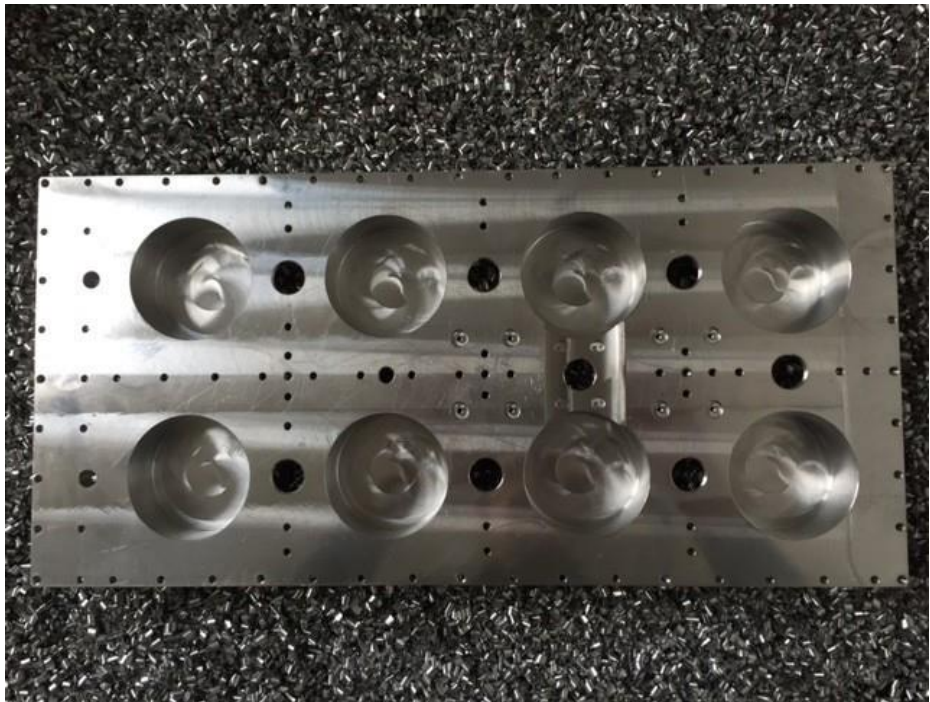
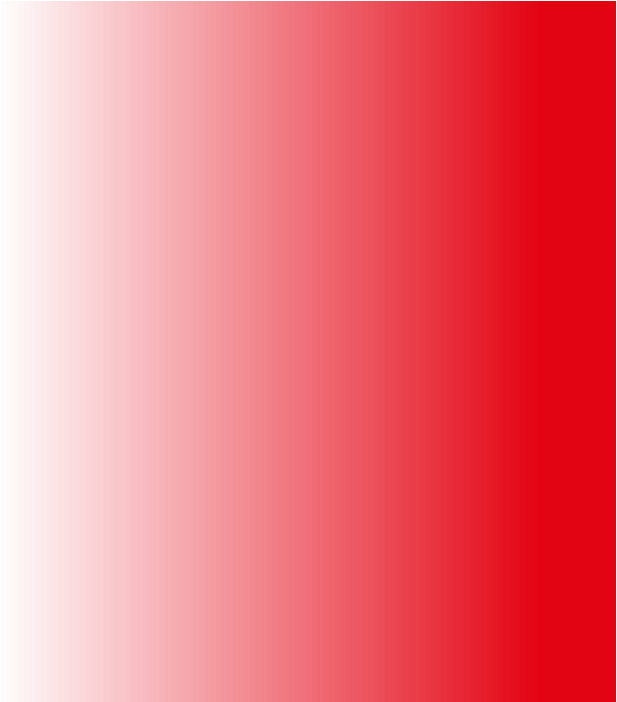
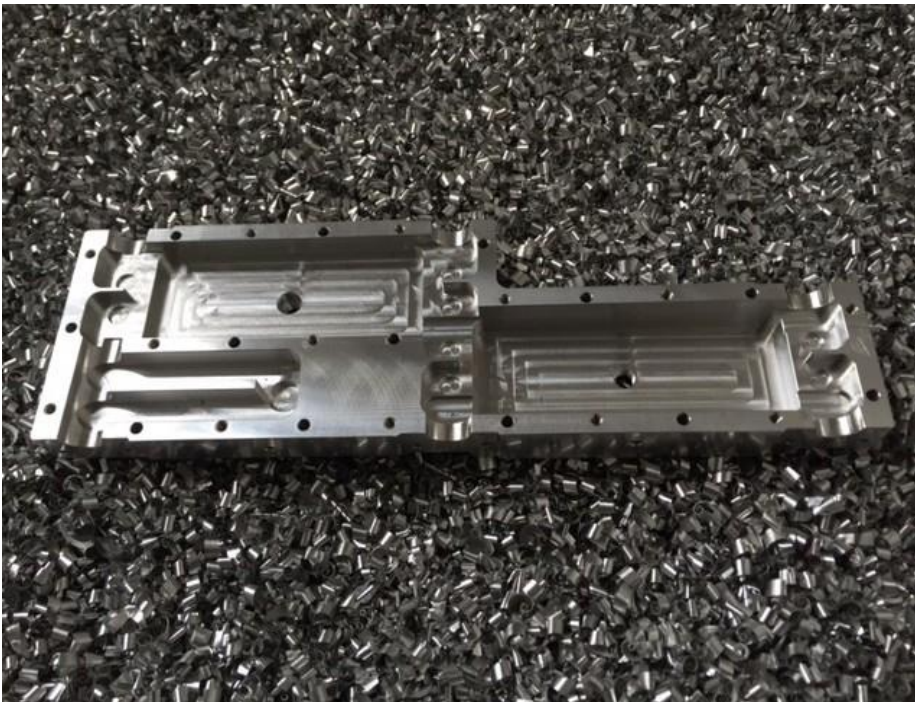
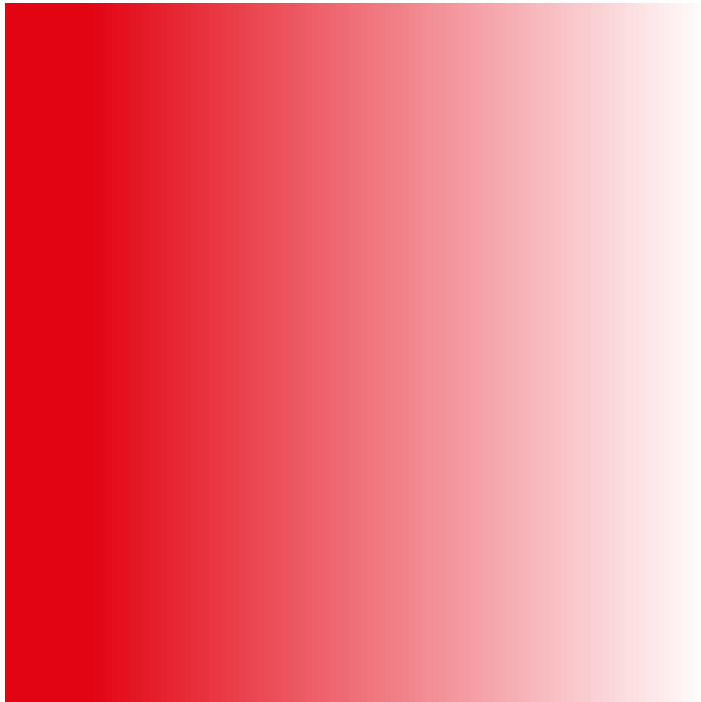
GÜDEL

Gudel Laghental
Switzerland

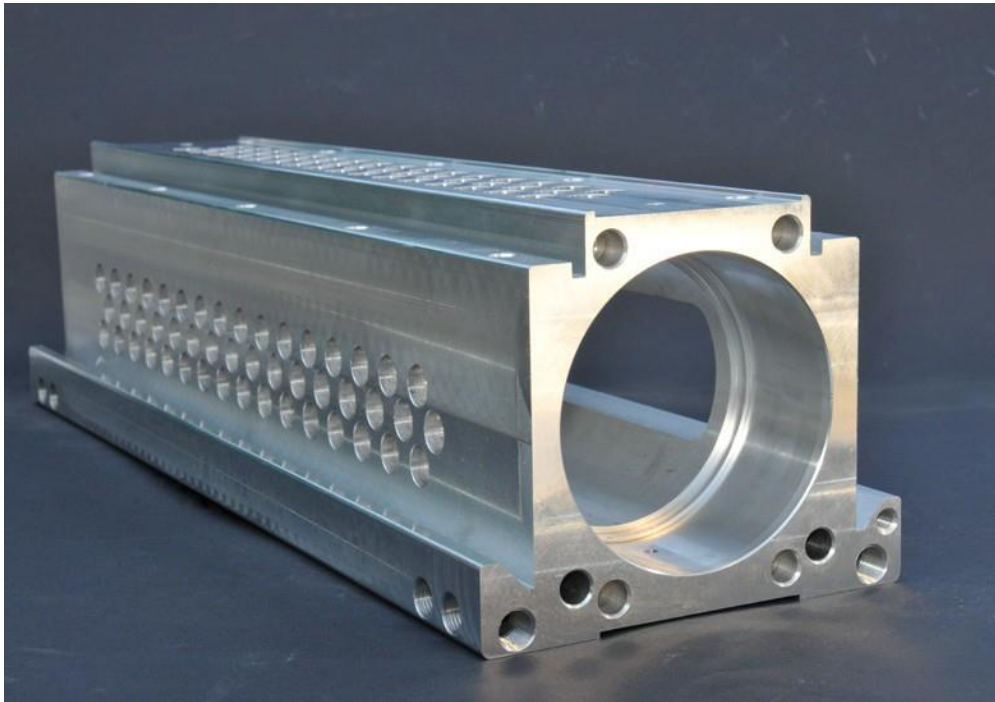
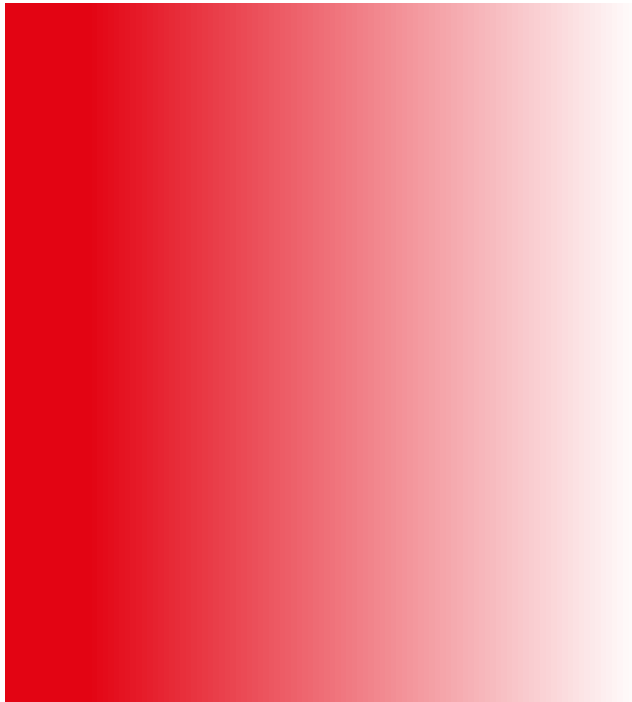
ROBOTICS



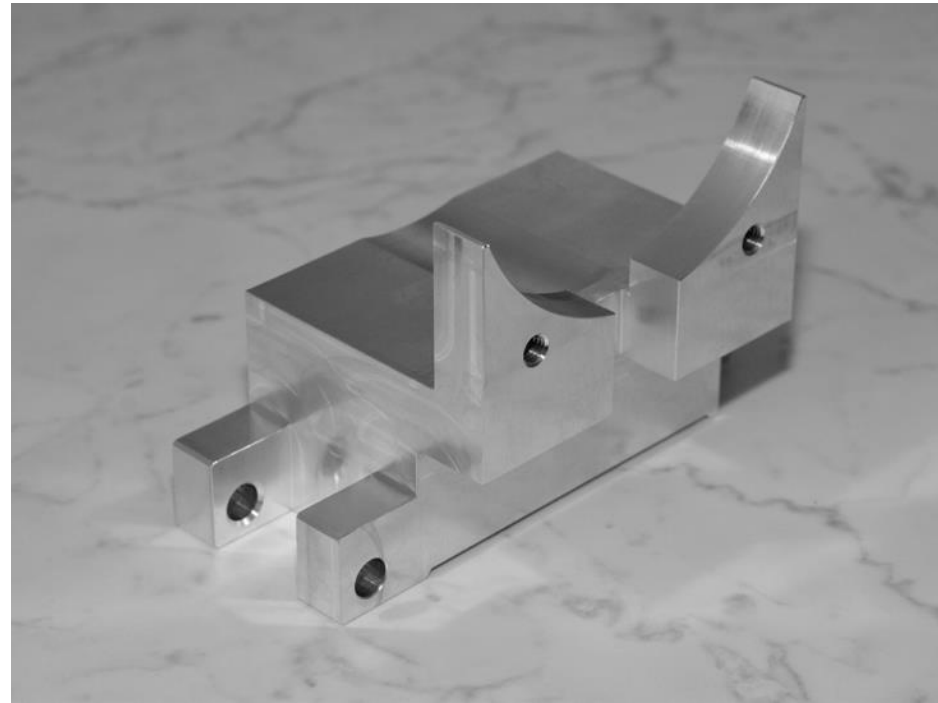
TELECOMMUNICATIONS



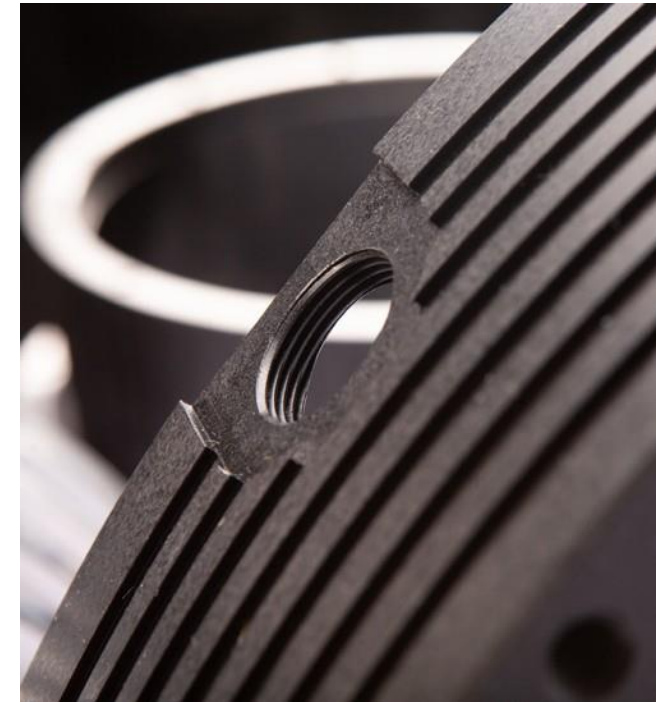
FOOD



MACHINE TOOLS



TORQUE MOTORS



OUR MISSION

We are constantly trying to broaden our knowledge through training, confrontation and study. We believe that precision is the key to excellence and we are well aware that in our field, precision processing, even the smallest error is not acceptable. Our recipe for excellence is based on the pragmatic approach of our mountain community, where we started out more than thirty years ago, believing that "it is what you do that counts". According to this philosophy we follow these 4 principles:

Planning and realizing

Efficiency and punctuality

Direction ability

Recognition



CONTACT US



Via Todesca, 137 – 23018 Talamona (SO) ITALY

Tel. +39 0342 672106

For information

info@bermec.com

For orders & offers

order@bermec.com

