



BIO

Perfectly Natural Beauty  
Bellezza Perfettamente Naturale

ENG



# Relax

**C&C Laboratori** results from the willingness of **CiEsse** to develop and offer a product line useful for the overall body care, able to meet the needs of every kind of skins; thus, **RELAX** was born, specifically conceived to help your skin to recover its harmony and its delicate balance. The treatments have been studied in order to respect the skin and to help it in its protective function, improving the moisturizing and emollient action. The result is a soft, balanced and healthy skin



In order to achieve these results, we have equipped ourselves with the most advanced facility, by investing huge resources in **RESEARCH AND DEVELOPMENT** laboratory, able to create products with unique features, with an extreme focus on the choice of ingredients and on their synergy, supporting the employment of ingredients of **NATURAL ORIGIN (PARABEN FREE - OGM FREE - SLS - SLES FREE - NICKEL FREE)**.

The employment of latest generation machinery and materials for the manufacturing, the study and the realization of attractive packaging, complete the offer of our Company

**OBM**

**ODM**

**OEM**

The achievement of this ambitious project led us, over time, to become highly competitive and to acquire a huge market, in close contact with important groups of the cosmetic sector, with which we can plan and develop extraordinary appealing product lines, offering also the private label service

**02 Presentation**

**03 Index**

**04-05 Pre Wax treatments**

06 Pre wax lotions

Olive Oil - Macadamia Oil - Avocado Oil

07 Magic Powder

**08-09 Epilation Waxes**

Liposoluble

10-11 For every kind of skins

Milk - Talc - Honey - Micromica - Argan

12-13 For sensitive skins

Azulene and Chamomile - Aloe - Zinc Oxid and Oat - Titanium Dioxide

14-15 Special Formulations

Macadamia - The Black One - Avocado - Organic Olive Oil

16-17 Synthetic Formulations

Synthetic Titanium - Synthetic

18-19 Brazilian Wax

The Black One - Titanium - Honey - Azulene and Chamomile

20-21 Hard Waxes

Honey - Chlorophyll - Titanium - Azulene

Water soluble

22 For Sensitive Skins

Water-Soluble

23 Sugar Paste

Soft - Strong

**24-25 Post Epilation Products**

26-27 Post Wax Oils

Argan - Talc and Camphor - Almond - Azulene and Menthol

28-29 Post Wax Oils GOLD

Organic Olive Oil - Avocado Oil - Macadamia Oil

30-31 Emulsions

Organic Olive Oil - Macadamia - Avocado

Solvent - Degreasing

**32-33 Face Care**

34-35 Face Cleaning

Face Peeling - Detergent Gel - Micellar Water - Scrub

36-37 Face Creams

Anti-aging - Delicate Skins - Impure Skins - Contouring eyes and lips

38-39 Peel Off

Illuminating - Recompacting - Tonic Soothing - Detergent milk - Face Masks

**40-41 Body Care**

42-43 Massage Oils

Coconut - Neutral - Almond - Azulene - Talc - Argan

44-45 Massage Oils +Plus

Organic Soothing - Lipo Reducing - Invigorating - Relaxing - Draining

46-47 Body Creams

Draining - Lipo Reducing - Thermoactive - Firming

48-49 Body Maintenance

Bath Shower Firming - Moisturizing - Draining - Moisturizing Cream - Conductive

50-51 Muds

Firming and Invigorating - Anti-cellulite Thermoactive - Mud Scrub

**52-53 Hands and Feet Care**

54 Creams

Regenerating hands - Emollient Feet

55 Pedological Salts

Draining and Fatiguing - Sanitizing and Refreshing

56-57 Paraffin

Azulene - Titanium - Chlorophyll - Honey

**58 Training**

**59 Company Organigram**

**Merchandising**

**60 Distribution information**



# Be|ax

## Pre epilation treatments

**Olive Oil**  
Pre wax lotion

**Macadamia Oil**  
Pre wax lotion

**Avocado Oil**  
Pre wax lotion

**Magic Powder**  
Soothing powder





> Pre epilation Products - Lotions

100LPL250000000

100LPE250000000

100LPC250000000

100LPL500000000

100LPE500000000

100LPC500000000

**Olive Oil**

Active ingredients  
Cosmetic properties

**Olive Oil**

Antioxidant which helps the regeneration of the cells and contrasts the effects of free radicals

**Oleic Acid**

**Lactic Acid**

Organic Acid with moisturizing and PH balancing effect. It's also an excellent skin conditioning

**Vegetal Glycerine**

**Macadamia Oil**

Active ingredients  
Cosmetic properties

**Macadamia Oil**

This oil is an excellent nutrient for your skin with emollient properties

**Palmitoleic Acid**

This antioxidant acid promotes the replacement of the cells by obstructing the effects of free radicals

**Lactic Acid**

**Vegetal Glycerine**

**Avocado Oil**

Active ingredients  
Cosmetic properties

**Avocado Oil**

This oil gives tone and compactness to dry and mature skins; it also possesses high antioxidant properties

**Oleic Acid**

Monounsaturated long-chain fatty acid with high nutrient and emollient properties

**Lactic Acid**

**Vegetal Glycerin** Produced by vegetal oils, this substance possesses high moisturizing and humectant properties

> Pre epilation Products - Soothing powder

250ml  
8,45 fl.oz

500ml  
16,9 fl.oz

300g  
10,58 Oz

100MP3000000000

Relax



**Magic Powder**

Active ingredients  
Cosmetic properties

**Magnesium Silicate**

This salt possesses protective properties of the skin and it reduces the grease effect

Pre wax lotion **with Olive Oil**

The high content of polyunsaturated fatty acids, vitamins, tocopherols and polyphenols is the main value of this oil. These elements confer emollient and moisturizing properties at the time of cleansing. It is, furthermore, a powerful antioxidant which prevents the signs of ageing

Pre wax lotion **with Macadamia Oil**

This oil is highly appreciated for being a source of monounsaturated fatty acids and of vitamin complex A-E. These elements guarantee an efficient cleansing even for the most delicate skins. Particularly suited for dry and irritated skins

Pre wax lotion **with Avocado Oil**

This oil is enriched with unsaturated and monounsaturated fatty acids, it cleanses delicately and prepares your skin to the depilatory treatment. Particularly suited for dry, sensitive and dehydrated skins

Soothing powder **Magic Powder**

This product is needed in order to prepare every kind of wax but it is recommended also at the end of your treatment as soothing element. It is employed specifically in the most moisturizing areas such as armpits and intimate parts





# Be|ax

## Liposoluble Waxes for Epilation

**For every kind of skin**

Argan Oil - Milk - Micromica - Honey - Talc

**For truly sensitive and easily reddening skins**

Aloe - Azulene&Chamomile

Titanium Dioxide Pink - Zinc Oxyd and Oat

**Special Formulations**

The Black One - Avocado - Macadamia - Organic Olive Oil

**Synthetic**

Crystal base - Crystal Titanium Dioxide Pink

**Brazilian Method**

Azulene & Chamomile Brazilian - Honey Brazilian

Titanium Dioxide Pink Brazilian - The Black One Brazilian

## Water-Soluble Waxes for Epilation

**For very sensitive skins**

Water-soluble

**Sugar Paste**

Soft - Strong





100ml  
3,38 fl.oz

400ml  
13,5 fl.oz

800ml  
27,0 fl.oz

100CLT400000000

100CLT800000000

100CTA400000000

100CTA800000000

100CCL000000000

100CL400000000

100CL800000000

100CCTN000000000

100CTN400000000

100CTN800000000

100CCAR000000000

100CAR400000000

100CAR800000000

Relax

### Milk

Active ingredients  
Cosmetic properties

Sunflower Oil

Titanium Dioxide

### Talc

Active ingredients  
Cosmetic properties

Sunflower Oil

Titanium Dioxide  
It respects and guarantees the normal balance of your skin

### Honey

Active ingredients  
Cosmetic properties

Sunflower Oil

A large amount of unsaturated fatty acids, such as oleic acid and linoleic acid. This oil, full of vitamin E, has emollient and moisturizing properties

### Micromica

Active ingredients  
Cosmetic properties

Sunflower Oil

Titanium Dioxide

Mica  
It gives compactness and it facilitates the hair removal

### Argan

Active Ingredients  
Cosmetic properties

Sunflower Oil

Titanium Dioxide

Mica  
Argan Oil  
This oil is full of tocopherols, flavonoids, carotinoids, xanthophylls, sterols and triterpenes. All these elements give to your skin an effective emollient, elasticizing and antioxidant effect

## Liposoluble waxes

### for every kind of skin

These formulations are realised with mixture of resins esterified with glycerine and highly refined oils which, through specific processes, give rise to depilatory waxes of different types. They include the three main qualities that a depilatory wax has to possess:

- Fluidity which offers an excellent applicability
- A very sensitive rip on the skin and, at the same time, effective on the hair
- Ability to avoid the risk of annoying reddening





100CCAC00000000

100CCAL00000000

100CCOA00000000

100CCT00000000

100ml  
3,38 fl.oz

100CAC400000000

100CAL400000000

100COA400000000

100CT400000000

400ml  
13,5 fl.oz

100CAC800000000

100CAL800000000

100COA800000000

100CT800000000

800ml  
27,0 fl.oz

Relax

### Azulene and Chamomile

Active ingredients  
Cosmetic properties

#### Chamomile Extract

This extract is composed mainly of flavonoids such as apigenin, luteolin, quercetin, rutin and their glycosides. These flavonoids implicate the anti-reddening, soothing and decongestant properties

#### Azulene

Azulene is a liposoluble substance with soothing, decongestant and anti-inflammatory properties

#### Sunflower Oil

### Aloe

Active ingredients  
Cosmetic properties

#### Aloe Extract

Due to the large amount of mucopolysaccharides, this extract has a remarkable ability to hold the water. Then, it results effective in the treatment of dehydrated, sensitive and atopic skins upon which it carries out a soothing and anti-reddening effect

#### Sunflower Oil

### Zinc Oxyd and Oat

Active ingredients  
Cosmetic properties

#### Zinc Oxyd

White powder with fine granulatory. It is water insoluble but it is soluble in acids or bases. It has different properties, among which the most important is the ability to create a barrier on your skin in order to avoid irritations

#### Oat Extract

The presence of betaglucan gives to this extract moisturizing, anti-reddening and anti-itch properties

#### Sunflower Oil

### Titanium Dioxide

Active ingredients  
Cosmetic properties

#### Titanium Dioxide

Natural mineral which respects and guarantees the normal balance of your skin

#### Sunflower Oil

A large amount of unsaturated fatty acids, such as oleic acid and linoleic acid. This oil, full of vitamin E, has emollient and moisturizing properties



### Liposoluble Waxes

#### for very sensitive and easily reddening skins

Some natural substances have been added to based formulations in order to balance the skin by giving it hydration. They possess soothing and softening properties which limit the redness



# Be|ax

400ml  
13,5 fl.oz

100CMA400000000

100CBLACK400000

100CAV400000000

100COB400000000

800ml  
27,0 fl.oz

100CMA800000000

100CBLACK800000

100CAV800000000

100COB800000000

### Macadamia For young skins

Active ingredients  
Cosmetic properties

**Macadamia Oil**  
This oil is an excellent nutrient for your skin with emollient properties

**Palmitoleic Acid**  
This antioxidant acid promotes the replacement of the cells by obstructing the effects of free radicals

Sunflower Oil

### The Black One Anti-cellulite

Active ingredients  
Cosmetic properties

**Spiruline Seaweed**  
Due to its high protein and lipid content, this seaweed allows the creation of a barrier against the water loss through the evaporation by carrying out a draining and vasodilatory effect

**Vegetal Coal**  
It possesses several properties and, in this case, the most important is its purifying and antibacterial action

**Titanium Dioxide**  
Natural mineral which respects and guarantees the normal balance of your skin

Sunflower Oil

### Avocado For mature skins

Active ingredients  
Cosmetic properties

**Avocado Oil**  
This oil gives tone and compactness to dry and mature skins; it also possesses high antioxidant properties

Oleic Acid

**Sunflower Oil**  
A large amount of unsaturated fatty acids, such as oleic acid and linoleic acid. This oil, full of vitamin E, has emollient and moisturizing properties

### Olive Oil Organic

Active ingredients  
Cosmetic properties

**Organic Olive Oil**  
Antioxidant which helps the regeneration of the cells and contrasts the effects of free radicals

**Oleic Acid**  
Monounsaturated long-chain fatty acids with high nutrient and emollient properties

Sunflower Oil

## Liposoluble waxes with special formulations

These formulations are studied in order to ensure the best solution in case of specific needs. Every formulation guarantees, through the use of appropriate active ingredients, the requested action enhancing the experience of epilation

- **Macadamia** for young skins
- **The Black One** anti-cellulite
- **Avocado** for mature skins
- **Olive Oil** organic





100CRL400000000

100CRL800000000

100CRY400000000

100CRY800000000

400ml  
13,5 fl.oz

800ml  
27,0 fl.oz

# Belax

Liposoluble waxes

**with synthetic formulations**

This special formulation combines synthetic oils and resins with high purity degree making this product totally respectful of your skin. It also assures an accurate and durable epilation with high hypoallergenic features. The model with Titanium Dioxide adds another delicate note to the treatment

This product is **colourless and odourless**

### Synthetic Titanium

Active ingredients  
Cosmetic properties

#### Vaseline Oil

This mineral oil, well known as white oil to highlight the purified form of its formulation, does not present allergens. As a result, it has an excellent skin tolerability

#### Synthetic Resins

#### Titanium Dioxide

Natural mineral which respects and guarantees the normal balance of your skin

### Synthetic

Active ingredients  
Cosmetic properties

#### Vaseline Oil

#### Synthetic Resins

It is a polymer synthesized by the pure resins' hydrogenation. It is free from allergens in order to conclude the coherence of its formulation





# Relax

400ml  
13,5 fl oz

800ml  
27,0 fl oz

1000g  
35,27 Oz

100CBM400000000

100CBB400000000

100CBT400000000

100CBA400000000

100CBM800000000

100CBB800000000

100CBT800000000

100CBA800000000

100CBM1000000000

100CBB1000000000

100CBT1000000000

100CBA1000000000

## Liposoluble waxes

### Brazilian wax

This system radically transforms the existing techniques; it represents an overall epilation regarding many parts of your body such as groin, legs, arms, armpits and the top of your lips. These waxes are applied in wider areas and they can be removed through an easy rip reducing the treatment time. In this way, this system will result effective, quick and pleasant. **It does not need any textile stripe.** The employment of a multidirectional technique does not require the respect of hair's direction. These waxes are based on vegetal and low-melting resins and they do not damage the capillaries. They also possess more plasticity in order to adhere to your hair. In this way, the waxes result painless and the hair removal takes place in depth also on smaller hair

## Pearls

### Brazilian Wax

This wax is available also in pearls model and it allows a more rational use of the product. In fact, it is possible to regulate the quantity according to the needs and to the dimensions of the area to be treated.

### Honey Brazilian

Active ingredients  
Cosmetic properties

Beeswax

**Carnauba Wax**

This wax has emollient, thickening and sheathing properties. It leaves a protective film on your skin and prevents it from the drying up. It is highly recommended for sensitive, irritated and delicate skins

**Sunflower Oil**

A large amount of unsaturated fatty acids, such as oleic acid and linoleic acid. This oil, full of vitamin E, has emollient and moisturizing properties

### The Black One Brazilian

Active ingredients  
Cosmetic properties

**Spiruline Seaweed**

Due to its high protein and lipid content, this seaweed allows the creation of a barrier against the water loss through the evaporation by carrying out a draining and vasodilatory effect

**Vegetal Coal**

It possesses several properties and, in this case, the most important is its purifying and antibacterial action

Beeswax

**Carnauba Wax**  
**Vaseline Oil**

This mineral oil, well known as white oil to highlight the purified form of its formulation, does not present allergens. As a result, it has an excellent skin tolerability

### Titanium Brazilian

Active ingredients  
Cosmetic properties

**Titanium Dioxide**

Natural mineral which respects and guarantees the normal balance of your skin

Beeswax

This wax possesses several properties for the beauty and care of your skin. It is moisturizing, emollient and protective. It is highly recommended for dry, sensitive and stressful skins

Carnauba Wax

Sunflower Oil

### Azulene and Chamomile Brazilian

Active ingredients  
Cosmetic properties

**Azulene**

Azulene is a liposoluble substance with soothing, decongestant and anti-inflammatory properties

**Chamomile Extract**

This extract is composed mainly of flavonoids such as apigenin, luteolin, quercetin, rutin and their glycosides. These flavonoids implicate the anti-reddening, soothing and decongestant properties

Beeswax

Carnauba Wax

Sunflower Oil





> Epilation products - Hard Wax WITHOUT STRIPES



100CM1000000000

100CC1000000000

100CT1000000000

100CA1000000000

100CM1100000000

100CC1100000000

100CT1100000000

100CA1100000000

100CM1200000000

100CC1200000000

100CT1200000000

100CA1200000000

100CM1300000000

100CC1300000000

100CT1300000000

100CA1300000000

6x100ml  
6x3,38 fl. oz

6x100ml  
3,38 fl. oz

2x500ml  
2x16,9 fl. oz

1000g  
35,27 oz

# Relax

Waxes  
Hard Wax

These hot waxes line, conceived with a series of new formulas, allowed us to realise some products with both high quality and ease of use. This process is an added value during the epilation.

The process of epilation with this kind of waxes conform to be wider and it does not need any rips for wax removal. The texture is soft and it dries quickly because of the new formula Virgin Beeswax, which allows a better hair adherence and a less painful epilation. Furthermore, it guarantees a lasting and professional epilation leaving your skin soft, smooth and clean.

**Honey** Hard Wax

Active ingredients  
Cosmetic properties

**Beeswax**

This wax possesses several properties for the beauty and care of your skin. It is moisturizing, emollient and protective. It is highly recommended for dry, sensitive and stressful skins.

**Chlorophyll** Hard Wax

Active ingredients  
Cosmetic properties

**Beeswax**

**Titanium** Hard Wax

Active ingredients  
Cosmetic properties

**Beeswax**

**Titanium Dioxide**

Natural mineral which respects and guarantees the normal balance of your skin

**Azulene** Hard Wax

Active ingredients  
Cosmetic properties

**Beeswax**

**Azulene**

Azulene is a liposoluble substance with soothing, decongestant and anti-inflammatory properties.

**Chamomile**

Composed mainly of flavonoids such as apigenin, luteolin, quercetin, rutin and their glycosides, they are responsible for high anti-redness, soothing and decongestant properties.

**Pearls**  
Hard Wax

This wax is available also in pearls model and it allows a more rational use of the product. In fact, it is possible to regulate the quantity according to the needs and to the dimensions of the area to be treated.





# Belax

400ml  
13,5 fl. oz  
100CL4000000000

800ml  
27,0 fl. oz  
100CL8000000000

100CS0400000000  
100CS0800000000

100CST400000000  
100CST800000000

### Water-soluble

Active ingredients  
Cosmetic properties  
**Sucrose**  
Its cosmetic properties are very important. In particular, glycolic acid is an antiseptic used in order to contrast skin's impurities

**Citric Acid**

### Sugar paste SOFT

Active ingredients  
Cosmetic properties  
**Sucrose**

**Glucose**  
It is a sugar belonging to polyalcohols. It is obtained through enzymatic hydrolysis of potato starch, corn starch, oat starch, wheat starch or manioc starch. This sugar performs humectant, moisturizing and conditioning properties.

**Citric Acid**

Operating temperature 20/25°C  
Practical use without stripes

### Sugar paste STRONG

Active ingredients  
Cosmetic properties  
**Sucrose**

**Glucose**

**Citric Acid**  
It is an organic tricarboxylic acid. It is obtained through the extraction from citruses or through the sugar solutions' fermentation. Its structure with three acid functionalities gives it chelating properties while the alcoholic functionality gives it exfoliant and keratolytic properties.

Operating temperature 25/30°C  
Practical use without stripes

## Sugar Paste

Born from the eastern tradition, the epilation with Sugar Paste wax is a manual and natural hair removal method without the use of chemical additives. As a result, the risk of allergic reactions is eliminated. The sugar, known for its antibacterial properties, is a natural preservative which avoids the bacteria's proliferation. Furthermore, the lemon makes your skin soft giving it an extreme shininess and helps the dead cells removal conducting a peeling effect. This paste can be applied on every kind of skin. In fact, it is appropriate for male and female skins, for more sensitive and risk of allergies one and in case of dermatological problems, for example psoriasis; the treatment is almost painless because the paste adheres only to the hair and not to your skin, avoiding redness, folliculitis and irritations. It is employed at low temperature thanks to its soft rip and is highly recommended for every varicose vein and fragile capillary. This paste is able to eliminate even the smaller hair, 2 or 3 millimetres. The frequent use of Sugar Paste considerably reduces the regrowth while the hair will result smaller. The manual technique requires training. It is very important to follow the instructions and to repeat this operation in order to acquire the needed manual skills.

## Water-soluble waxes

These waxes are appropriate for both young and mature skins, which need a frequent epilation. They have to be applied to body temperature and they are highly recommended for pain-sensitive people. Their composition is totally natural, it ensures the maximum hygiene and it can be preserved for long periods. They consent both small and hard hair removal for a professional epilation, leaving your skin smooth, soft and without irritations.





# Relax

## Post Epilation Products

### Post Wax Oils

Argan Oil - Talc and Camphor - Almond - Azulene and Chamomile

### Post Wax Oils Gold

Organic Olive Oil - Avocado Oil - Macadamia Oil

### Post Wax Emulsions

Macadamia Oil - Avocado Oil - Organic Olive Oil





110ODA250000000

100ODTC250000000

100ODMA250000000

100ODAM250000000

250ml  
8,45 fl. oz

110ODA500000000

100ODTC500000000

100ODMA500000000

100ODAM500000000

500ml  
16,9 fl. oz

110ODA1000000000

100ODTC1000000000

100ODMA1000000000

100ODAM1000000000

1000ml  
33,81 fl. oz

110ODA3000000000

100ODTC3000000000

100ODMA3000000000

100ODAM3000000000

5000ml  
169,07 fl. oz

# Relax

## Argan Oil

Active ingredients  
Cosmetic properties

### Sunflower Oil

A large amount of unsaturated fatty acids, such as oleic acid and linoleic acid. This oil, full of vitamin E, has emollient and moisturizing properties.

• Lecithin • Tocopherol • Ascorbic Acid

## Talc and Camphor

Active ingredients  
Cosmetic properties

### Sunflower Oil

• Lecithin • Tocopherol • Ascorbic Acid

## Almond

Active ingredients  
Cosmetic properties

### Sunflower Oil

• Lecithin • Tocopherol • Ascorbic Acid

## Azulene and Menthol

Active ingredients  
Cosmetic properties

### Sunflower Oil

• Lecithin • Tocopherol • Ascorbic Acid

This is a complex in which the Lecithin, a mixture of natural phospholipids, carries out a moisturizing action, reduces the desquamation and helps to restore the skin's elasticity; Tocopherol, or Vitamin E, possesses a high antioxidant activity able to soften free radicals' reactivity by obstructing the large amount of events which cause the oxidative stress. The Ascorbic Acid, or Vitamin C, plays an important role in the collagen's formation and it is one of the few cosmetic mechanism with a scientific evidence.



## Post Wax Oils

These Oils are perfect for the delicate post waxing step. They are studied in order to remove gently the traces of wax after the epilation with stripes and waxing. Their formulation is enriched with a synergy between vegetal Oils and Vitamin E; they have a fast penetration and they conduct a soothing and moisturizing action by reducing reddening and irritations. They do not grease your skin and make it smooth and soft for a long time.



# Relax

250ml  
8,45 fl. oz

500ml  
16,9 fl. oz

1000ml  
33,81 fl. oz

5000ml  
169,07 fl. oz

100ODGM25000000

100ODGM50000000

100ODGM100000000

100ODGM300000000

### Macadamia Oil

Active ingredients  
Cosmetic properties

**Macadamia Oil**  
This oil is an excellent nutrient for your skin with emollient properties

**Sweet Almond Oil**

**Sunflower Oil**

• **Lecithin** • **Tocopherol** • **Ascorbic Acid**  
This is a complex in which the Lecithin, a mixture of natural phospholipids, carries out a moisturizing action, reduces the desquamation and helps to restore the skin's elasticity. Tocopherol, or Vitamin E, possesses a high antioxidant activity able to soften free radicals' reactivity by obstructing the large amount of events which cause the oxidative stress. The Ascorbic Acid, or Vitamin C, plays an important role in the collagen's formation and it is one of the few cosmetic mechanism with a scientific evidence

100ODGA25000000

100ODGA50000000

100ODGA100000000

100ODGA300000000

### Avocado Oil

Active ingredients  
Cosmetic properties

**Avocado Oil**  
This oil gives tone and compactness to dry and mature skins; it also possesses high antioxidant properties

**Sweet Almond Oil**

**Sunflower Oil**  
A large amount of unsaturated fatty acids, such as oleic acid and linoleic acid. This oil, full of vitamin E, has emollient and moisturizing properties

• **Lecithin** • **Tocopherol** • **Ascorbic Acid**

100ODGO25000000

100ODGO50000000

100ODGO100000000

100ODGO300000000

### Organic Olive Oil

Active ingredients  
Cosmetic properties

**Organic Olive Oil**  
Antioxidant which helps the regeneration of the cells and contrasts the effect of free radicals

**Sweet Almond Oil**

This oil protects your skin from the drying up and it is invigorating. It activates the skin's repair; it alleviates the itching and it helps to prevent the stretch marks

**Sunflower Oil**

• **Lecithin** • **Tocopherol** • **Ascorbic Acid**

## Post Wax Oils GOLD

These Oils are perfect for the post epilation in order to remove possible traces of wax in a natural and delicate way. The epilation can provoke stress and reddening to the body. These products, thanks to the specific action of the vegetal oils, carry out an emollient function decongesting the inflamed skin without greasing leaving your skin smooth and soft.





100LAO250000000

100LAM250000000

100LAA250000000

100LAO500000000

100LAM500000000

100LAA500000000

### Organic Olive Oil

Active ingredients  
Cosmetic properties

#### Organic Olive Oil

Antioxidant which helps the regeneration of the cells and contrasts the effect of free radicals

#### Sweet Almond Oil

This oil protects your skin from the drying up and it is invigorating. It activates the skin's repair, it alleviates the itching and it helps to prevent the stretch marks

#### Sunflower Oil

A large amount of unsaturated fatty acids, such as oleic acid and linoleic acid. This oil, full of vitamin E, has emollient and moisturizing properties

#### • Lecithin • Tocopherol • Ascorbic Acid

This is a complex with high moisturizing properties which help to restore the skin's elasticity. It is a powerful antioxidant and it plays an important role in the collagen's formation

#### Chamomile and Aloe Extract

To the Chamomile, which carries out a soothing, emollient, protective and purifying action, should be added the Aloe's refreshing and anti-inflammatory action, by giving hydration to your skin with a high antioxidant element

### Avocado Oil

Active ingredients  
Cosmetic properties

#### Avocado Oil

This oil gives tone and compactness to dry and mature skins; it also possesses high antioxidant properties

#### Sweet Almond Oil

#### Sunflower Oil

#### • Lecithin • Tocopherol • Ascorbic Acid

#### Chamomile and Aloe Extract

### Solvent - Degreasing

Active ingredients  
Cosmetic properties

#### Soybean Oil

It is the oily component which facilitates the cleaning operation.

#### D-Limonene

Natural substance contained in the citrus peel, it is water-insoluble but soluble in alcohol and oils. It results to be appropriate for wax traces' removal from tools and workpiece table

#### Sunflower Oil

250ml  
8,45 fl. oz

500ml  
16,9 fl. oz

500ml  
16,9 fl. oz

100SA500000000

# Relax

### Post Wax Emulsions

These liquid emulsions are formulated with vegetal and organic actives, they have a silky and abundant consistence. They are appropriate to remove softly possible traces of depilatory wax and they carry out an action similar to sebum giving the exact level of hydration and soothing immediately your skin. They are perfect even for the most sensible and delicate skin because they help it in reconstructing the hydro-lipidic film. The regenerating effect with hot and spicy fragrance carries out a pleasant cosmetic-flavour action which wraps your body in a fresh and wellness sensation

### Solvent for equipments

Natural oil useful to remove quickly the traces of wax from the equipments and to protect the skin from possible contacts. The soybean oil and the limonene give to the product a strong solvent effect releasing a pleasant orange flavour





# Belax

## Face Care

### Cleansing

PEELING exfoliant gel for face  
GEL MOP cleaning gel mop  
MICELLAR cleansing water  
EXFOLIANT CELL

### Face cream

ANTIAGE Anti-aging face cream  
SENSIBLE Face cream for delicate skins  
PURIFY Face cream for impure skins  
LIFT Cream for contouring eyes and lips

### Face care

CLEANSE Cleansing milk  
SWEETLY Soothing tonic  
SOS SENSITIVE Illuminating emollient concentrate  
SOS PURE Recompacting purifying concentrate  
PEEL OFF Anti-aging illuminating peel off face mask






# Relax

 250ml  
8,45 fl. oz

100PV2500000000

100GD2500000000

 250ml  
8,45 fl. oz

100SM2500000000

 500ml  
16,9 fl. oz

100SC5000000000

## Face Cleansing

**FACE AND BODY SCRUB** Perfect start for a wellbeing and pleasure treatment, this scrub is a concentrate of natural substances and surfactants which nourish, rebuild and cleanse your skin. The new exfoliant and revitalising product for body and face, allows a deep and natural action respecting also the sensitive and easily reddening skin. This is the result of the most advanced cosmetic research and it associates a vegetal active complex with natural almond and hazelnuts microgranules which have a soothing and smoothing action by eliminating deeply and delicately the dead cells, giving to your skin a soft and velvety touch

**MICELLAR WATER FOR MAKE-UP REMOVER** It removes perfectly the make-up on the eyelashes and eyelids, respecting the eyes contouring area. The micelles in its formulations allow an ideal micro emulsion of your skin, eliminating the impurities and respecting the physiological balance of the skin. It ensures an excellent skin and eyes tolerability

**EXFOLIANT PEELING GEL FOR FACE** A revolutionary treatment based on the exclusive combination of enzymatic Bioliquified with red grape and wheat bran. This mix is stabilised with the smoothing action of the alpha-hydroxyacids, that is a mixture of apple and lemon, which renews and exfoliates the face's skin, by eliminating dead cells, impurities and toxins

**CLEANSING MOP GEL** This gel carries out 3 actions simultaneously for your skin. It cleanses delicately removing from your face every trace of impurity, even the more resistant, leaving the skin toned and balanced without any greasing trace. It's appropriate for every kind of skin

### PEELING Exfoliant gel for face

Active ingredients  
Cosmetic properties  
**Enzymatic bioliquified from red grapes**  
The polyphenols contained are considered the most powerful existing anti-free radicals

**Bioliquified from wheat bran**  
They carry out an important action against the free radicals

**Apple Extract**  
It is full of vitamins and antioxidant substances

**Lemon Extract**  
It has high astringent, antibacterial and antioxidant properties

**Alpha-Hydroxyacids**  
They are called also fruit's acids, they possess exfoliant and antioxidant properties

### GEL MOP Cleansing

Active ingredients  
Cosmetic properties  
**(Active Water) Lilac Flowers**

**Beeswax**  
It possesses emollient and antibacterial properties

**Aloe Extract**

**Resplanta Avocado**  
It exploits all moisturizing and emollient properties of vegetal water-soluble oils

**Oat Extract**  
It has moisturizing and soothing properties

**Sweet Almond Oil**  
This oil is soothing and emollient and useful against burns, stretch marks and dry skin

**Carnauba Wax**  
It has emollient, sheathing, thickening and filming properties

**Hamamelis Extract**  
It possesses anti-inflammatory and anti-aging active ingredients

### MICELLAR Water for make-up remover

Active ingredients  
Cosmetic properties  
**(Active Water) Lilac Flowers**  
They have high ability to strengthen the skin's self-repair

**Resplanta Olea**  
Water dispersible derivative of the olive oil, it maintains the emollient, eutrophic, lubricating and sebum-balancing properties

### EXFOLIANT CELL Face and body scrub

Active ingredients  
Cosmetic properties  
**Sunflower Oil**  
It contains linoleic acid and oleic acid, full of Vitamin E, with high emollient and moisturizing properties

**Beeswax**  
It possesses emollient and antibacterial properties

**Aloe Extract**  
It possesses an extraordinary ability to penetrate and moisturize deeply your skin

**Vegetal almond and hazelnuts granules**  
Derived from the shelling of almonds and hazelnuts, these granules are ground in a very accurate way in order to balance the exfoliant effect

**Lactic Acid**  
Organic acid with moisturizing and PH balancing effect; it's also an excellent skin conditioning

**Chamomile Extract**  
This extract is composed mainly of flavonoids such as apigenin, luteolin, quercetin, rutin and their glycosides. These flavonoids implicate the anti-reddening, soothing and decongestant properties

**Sweet Almond Oil**  
This oil protects your skin from the drying up and it is invigorating. It activates the skin's repair; it alleviates the itching and it helps to prevent the stretch marks





100CVA250000000

**ANTIAGE**  
Anti-aging face cream

Active ingredients  
Cosmetic properties

**[Active Water] Organic Helichrysum Flowers**  
They possess astringent and soothing properties

**Organic Olive Oil**  
Antioxidant oil, effective against the ageing's signs

**Oat Extract**  
It has moisturizing and soothing properties

**Macadamia Oil**

**Argan Oil**  
Antioxidant and nourishing oil, it is very useful against the ageing

**Carnauba Wax**  
It has emollient, sheathing, thickening and filming properties

**Ginkgo Biloba Extract**  
It carries out protective and reparative action; it is employed in the production of anti-aging treatments

100CVS250000000

**SENSIBLE**  
Face cream for delicate skins

Active ingredients  
Cosmetic properties

**[Active Water] Organic Cornflowers**

**Karité Butter**

**Rosa Mosqueta Oil**

**Macadamia Oil**

**Argan Oil**

**Carnauba Wax**

**Aloe Extract**  
It possesses an extraordinary ability to penetrate and moisturize deeply your skin  
**Chamomile Extract**  
It has high astringent, balancing, anti-inflammatory and soothing properties for sensitive skins

100CVP250000000

**PURIFY**  
Face cream for impure skins

Active ingredients  
Cosmetic properties

**[Active Water] Lilac Flowers**  
They have high ability to strengthen the skin's self-repair

**Rosa Mosqueta Oil**

**Hamamelis Extract**  
It possesses anti-inflammatory and anti-aging active ingredients.

**Burdock Extract**  
It restores the normal epidermis cycle

**Propolis Extract**  
It is able to inhibit the growth of bacterial strains

100CL250000000

**LIFT**  
Cream for contouring eyes and lips

Active ingredients  
Cosmetic properties

**[Active Water] Organic Cornflowers**  
They are full of decongestant and anti-inflammatory substances

**Karité Butter**  
It has high emollient, nourishing and moisturizing properties  
**Rose Mosqueta Oil**  
This oil has regenerating properties; it is useful against scars, wrinkles, stretch marks and moles

**Macadamia Oil**  
It contains Palmitoleic Acid which possesses antioxidant properties; it facilitates the cells' replacement and it obstructs the effects of free radicals  
**Soybean Oil**  
Very moisturizing oil, it easily absorbable. It is recommended for mature skins  
**Grape Pips Oil**  
Cosmetic Oil for mature skins in the prevention and in the treatment of the wrinkles

**Hyaluronic Acid of high molecular weight**  
It gives to your skin resistance properties and it is very useful in the maintaining of the shape

250ml  
8,45 fl. oz

Relax

**Face care**

**CREAM FOR CONTOURING EYES AND LIPS** Active-lift anti-aging treatment, based on the technology (ACTIVE WATER) with a firming and redefinition action. The lineaments result to be rested and smooth while the skin appears more tonic and the incarnate is radiant. It is based on vegetal emulsions and natural actives, it has an easy penetration and an effect similar to sebum, assuring an extraordinary hydro-lift action.

**ANTI-AGING FACE CREAM** The 24 hours anti-aging intensive treatment, has shown an excellent affinity with skin tissues. It is able to bring an antioxidant and filling action for the expression wrinkles. Its revitalizing formulation (ACTIVE WATER) gives to your skin a bright and smooth effect, reducing visibly your wrinkles. The choice and the synergy of actives in its recipe define its uniqueness

**FACE CREAM FOR DELICATE SKINS** Its delicate action is based on soothing and moisturizing properties of natural ingredients. It is ideal for the most sensitive skins in case of reddening, itching and irritations. The choice and the combination of actives (ACTIVE WATER) ensures an important antioxidant and restoring action, recovering the correct and physiological balance of your skin

**FACE CREAM FOR IMPURE SKINS** Perfect partner in order to reply with effectiveness and certainty to mixed and impure skin's demands, respecting the fragile balance, it carries out a fast and normalizing action for returning to your skin a healthy and vital aspect. This cream is formulated with (ACTIVE WATER), it contains absorbent and regulatory active ingredients and it lightens and balances your epidermis. An extraordinary cosmetic with an easily reddening texture.





# Relax

500ml  
16,9 fl.oz  
100LD5000000000

## CLEANSE Cleansing milk

Active ingredients  
Cosmetic properties  
**Sweet Almond Oil**  
This oil is soothing and emollient and useful against burns, stretch marks and dry skin  
**Sunflower Oil**  
It contains linoleic acid and oleic acid, full of Vitamin E, with high emollient and moisturizing properties  
**Mallow Extract**  
**Aloe Extract**  
It possesses an extraordinary ability to penetrate and moisturize deeply your skin  
**Passiflora Extract**  
**Oat Extract**  
It has moisturizing and soothing properties  
• **Lecithin** • **Tocopherol** • **Vitamin C**  
This is a complex with high moisturizing properties which help to restore the skin's elasticity. It is a powerful antioxidant and it plays an important role in the collagen's formation



500ml  
16,9 fl.oz  
100TA5000000000

## SWEETLY Soothing tonic

Active ingredients  
Cosmetic properties  
**Hamamelis Extract**  
It possesses anti-inflammatory and anti-aging active ingredients.  
**Chamomile Extract**  
It has high astringent, balancing, anti-inflammatory and soothing properties for sensitive skins  
**Mallow Extract**  
It has soothing, refreshing and anti-reddening properties  
**Vegetal Glycerol**  
It has antioxidant, emollient and moisturizing properties which help to reinvigorate skin's face



100MSCD50000000

## SOS SENSITIVE

### Desensitising-Moisturizing Concentrate

Active ingredients  
Cosmetic properties

**Chamomile Extract**

**Mallow Extract**

**Vegetal Glycerol**

**Passiflora Extract**

The presence of flavonoids guarantees soothing and anti-reddening properties and it helps also in the protection of the microcirculation ; it is very useful in the treatment of sensitive and couperose risk skins



100MSCA50000000

## SOS PURE

### Purifying-Detoxifying Concentrate

Active ingredients  
Cosmetic properties

**Hamamelis Extract**

**Essential Lemon Oil**

This oil improves the circulation and it is able to strengthen the venous capacity and to obstruct liquids' stagnation

**Essential Salvia Officinalis Oil**

This oil contains vitamins, enzymes and flavonoids with stimulating properties which make it highly recommended for fighting the skin's imperfections caused by water retention

**Vegetal Glycerol**

**Vegetal Glycerol**

**Vegetal Glycerol**

**Vegetal Glycerol**

**Vegetal Glycerol**

**Vegetal Glycerol**

**Vegetal Glycerol**

**Vegetal Glycerol**

**Vegetal Glycerol**

**Vegetal Glycerol**

**Vegetal Glycerol**

**Vegetal Glycerol**

**Vegetal Glycerol**

**Vegetal Glycerol**

**Vegetal Glycerol**

**Vegetal Glycerol**

**Vegetal Glycerol**

**Vegetal Glycerol**

**Vegetal Glycerol**

**Vegetal Glycerol**

**Vegetal Glycerol**

**Vegetal Glycerol**

**Vegetal Glycerol**

**Vegetal Glycerol**

**Vegetal Glycerol**

**Vegetal Glycerol**

**Vegetal Glycerol**

**Vegetal Glycerol**

**Vegetal Glycerol**

**Vegetal Glycerol**

**Vegetal Glycerol**

**Vegetal Glycerol**

**Vegetal Glycerol**

**Vegetal Glycerol**

**Vegetal Glycerol**

**Vegetal Glycerol**

**Vegetal Glycerol**

**Vegetal Glycerol**

**Vegetal Glycerol**

**Vegetal Glycerol**

**Vegetal Glycerol**

**Vegetal Glycerol**

**Vegetal Glycerol**

**Vegetal Glycerol**

**Vegetal Glycerol**

**Vegetal Glycerol**

**Vegetal Glycerol**

**Vegetal Glycerol**

**Vegetal Glycerol**

**Vegetal Glycerol**

**Vegetal Glycerol**

**Vegetal Glycerol**

**Vegetal Glycerol**

**Vegetal Glycerol**

**Vegetal Glycerol**

150ml  
5,29 fl.oz

## PEEL OFF Tear-off Mask

Active ingredients  
Cosmetic properties

**Vegetal Coal**

Thanks to its antibacterial and purifying properties, this coal purifies and steams up your skin. Furthermore, thanks to its absorbent, purifying and detoxifying properties, it is a very useful ingredient for greasy and mixed skins and in case of spots and blackheads

**Alginates - Brown Seaweed**

Mixture mainly derived from seaweeds able to reach the deepest skin layers by moisturizing it and by making it more compact, smoother and brighter

**Vitamin C**

This vitamin treats dark spots and prevents them by activating collagen's production which is an important protein for skin's integrity and tonicity.

**Begonia Extract**

It is a Siberian plant which protects, moisturizes and reinforces your skin

**Grape Extract**

The polyphenols contained in this extract are powerful anti-free radicals and they have an antioxidant action. Furthermore, they inhibit the oxidative process and they are effective on the microcirculation making your capillaries stronger. They also protect elastin and collagen of your skin making it more elastic and tonic

**Blackberry Extract**

This extract has protective and antioxidant properties and it is employed to renew the hydrolipidic barrier, to maintain the hydration of the skin and slow the process of ageing

**Scutellaria Extract**

Its flavonoids make this extract a powerful anti-ageing with sebum-regulator effect



## Tonic and Milk

**SOOTHING TONIC** It is full of moisturizing and invigorating substances, it helps to reawaken the dull and fatigued skin, giving to it vitality and brightness. Natural extracts' synergy produces an effective astringent, soothing and purifying action.

**CLEANSING MILK** Delicate emulsion appropriate for a perfect skin cleansing. It is formulated in order to remove the make-up, impurities and sebum excess, regulating its balance. It is full of functional substances with a high eudermic concentration, it gives to your skin a pleasant sense of well-being with an efficient antioxidant and calming action.



# Be|ax

## Body Care

### Massage oils

Argan - Almond - Azulene - Talc - Neutral - Coconut

### Massage oils Gold

Draining - Liporeducing - Relaxing - Soothing ORGANIC -  
Invigorating

### Body creams

Draining - Liporeducing - Firming - Thermoactive

### Maintenance products

Bath&Shower Firming and invigorating - Bath&Shower  
Moisturizing - Bath&Shower Draining - Fluid moisturizing  
cream - Conductive cream Tekar

### Massage and pose muds

Active Mud Anti-cellulite - Firming and Invigorating -  
Thermoactive anti-cellulite





# Relax

100OMC25000000

100OMN250000000

100OMMA2500000

100OMAZ2500000

100OMT250000000

100OMA25000000

250ml  
8,45 fl. oz

100OMC50000000

100OMN500000000

100OMMA5000000

100OMAZ5000000

100OMT500000000

100OMA50000000

500ml  
16,9 fl. oz

100OMC100000000

100OMN1000000000

100OMMA1000000

100OMAZ1000000

100OMT100000000

100OMA10000000

1000ml  
33,81 fl. oz

100OMC30000000

100OMN300000000

100OMMA3000000

100OMAZ3000000

100OMT300000000

100OMA30000000

5000ml  
169,07 fl. oz

Coconut	Neutral	Almond	Azulene	Talc	Argan
Active ingredients Cosmetic properties	Active ingredients Cosmetic properties	Active ingredients Cosmetic properties	Active ingredients Cosmetic properties	Active ingredients Cosmetic properties	Active ingredients Cosmetic properties
Sunflower Oil	Sunflower Oil	Sunflower Oil	Sunflower Oil	Sunflower Oil	Sunflower Oil. It contains linoleic acid and oleic acid, full of Vitamin E, with high emollient and moisturizing properties
Sweet Almond Oil	Sweet Almond Oil	Sweet Almond Oil This oil is soothing, emollient and useful against burns, stretch marks and dry skin	Sweet Almond Oil	Sweet Almond Oil	Sweet Almond Oil
• Lecithin • Tocopherol • Vitamin C	• Lecithin • Tocopherol • Vitamin C	• Lecithin • Tocopherol • Vitamin C	• Lecithin • Tocopherol • Vitamin C This is a complex with high moisturizing properties which help to restore the skin's elasticity. It is a powerful antioxidant and it plays an important role in the collagen's formation	• Lecithin • Tocopherol • Vitamin C	• Lecithin • Tocopherol • Vitamin C

## Massage oils

These oils are specific for the massage. They are formulated with the support of synergy between vegetal oils, such as the sweet almond oil, and Vitamin E, which have emollient, elasticizing and nourishing properties. They do not grease and result to be easily absorbed, improving the sliding of the hands even in case of prolonged massages. They can be employed on every type of skin.





100OMGB25000000

100OMGL25000000

100OMGT25000000

100OMGR25000000

100OMGD25000000

250ml  
8,45 fl. oz

100OMGB50000000

100OMGL50000000

100OMGT50000000

100OMGL50000000

100OMGD50000000

500ml  
16,9 fl. oz

100OMGB100000000

100OMGL100000000

100OMGT100000000

100OMGR100000000

100OMGD100000000

1000ml  
33,81 fl. oz

100OMGB300000000

100OMGL300000000

100OMGT300000000

100OMGR300000000

100OMGD300000000

5000ml  
169,07 fl. oz

### Relaxing Organic

Active ingredients  
Cosmetic properties

**Organic Olive Oil.** Powerful antioxidant which helps the regeneration of the cells and contrasts the effects of free radicals.

• **Lecithin** • **Tocopherol** • **Vitamin C**

Essential Mandarin Oil

### Lipo-reducing

Active ingredients  
Cosmetic properties

**Sunflower Oil**

**Sweet Almond Oil**

• **Lecithin** • **Tocopherol** • **Vitamin C**

**Coffee Extract** This extract has lipolytic properties but it's very important its ability to stimulate the drainage and the stagnant liquids' removal (anti-oedematose function). The cosmetic use is recommended for people which present cellulite, water retention and localized adiposities

**Essential Sage Oil** In this oil there are a lot of compounds and healthy elements such as Vitamins, Enzymes and Flavonoids with stimulating properties which make this oil appropriate in order to contrast skin's imperfections caused by the water retention and for anti-cellulite treatments

**Essential Sicilian Lemon Oil**

**Essential Mandarin Oil** It can be employed in order to contrast stretch marks and cellulite by stimulating the lymphatic circulation. It is more effective if employed with other oils with the same effect such as grapefruit, cypress or lemon oil

### Invigorating and firming

Active ingredients  
Cosmetic properties

**Sunflower Oil**

**Sweet Almond Oil**

• **Lecithin** • **Tocopherol** • **Vitamin C**

**Essential Peppermint Oil** This oil is mainly composed of Menthol, Vitamin C, Flavonoids, Tannins. It gives a refreshing, tonic and purifying action to the essential oil

**Essential Cypress Oil** This oil has extraordinary tonic properties, it is a vasoconstrictor which reactivates venous circulation decongesting the venous-lymphatic system. For this reason, it is very useful in case of cellulite

**Essential Sicilian Lemon Oil**

### Relaxing

Active ingredients  
Cosmetic properties

**Sunflower Oil** It contains linoleic acid and oleic acid, full of Vitamin E, with high emollient and moisturizing properties  
**Sweet Almond Oil** This oil is soothing, emollient and useful against burns, stretch marks and dry skin

• **Lecithin** • **Tocopherol** • **Vitamin C** This is a complex with high moisturizing properties which help to restore the skin's elasticity. It is a powerful antioxidant and it plays an important role in the collagen's formation

Essential Mandarin Oil

### Draining

Active ingredients  
Cosmetic properties

**Sunflower Oil**

**Sweet Almond Oil**

• **Lecithin** • **Tocopherol** • **Vitamin C**

**Essential Bitter Orange Oil** This oil is employed for its purifying properties and, combined with a vegetal oil to contrast the cellulite, it is highly appreciated in natural cosmetic for its precious and characteristic fragrance

**Essential Fennel Oil** It possesses a diuretic action which makes it effective in case of water retention; it contrasts also cellulite and the accumulation of toxins

**Essential Sicilian Lemon Oil** It improves the circulation and it is also able to strengthen the venous capacity by obstructing the liquids' stagnation. For this reason, it is employed in the cellulite care

### Massage oils GOLD

These oils have been conceived in order to offer an unique experience during the massage. They are enriched with essential oils and extracts which, according to the case, ensure unique peculiarities for the product and recommendations about their employment. They do not grease and result to be easily absorbent, improving the sliding of the hands even in case of prolonged massages.

**DRAINING** with lemon, fennel and bitter orange essential oils.

**INVIGORATING AND FIRMING** with peppermint, lemon and cypress essential oils

**LIPO-REDUCING** with coffee extract and lemon, mandarin and sage essential oils

**RELAXING** with mandarin essential oils

**RELAXING ORGANIC** with organic olive oil and mandarin essential oils



# Relax



## Body creams

**FIRMING AND INVIGORATING** Formulations finalised to the treatment of the imperfections due to cutaneous relaxation. It is highly recommended in case of diets and quick slimmings. The soft texture allows fast and efficient massages. It is quickly absorbed, it does not grease and leaves your skin soft, smooth and more elastic. This cream is formulated with vegetal extracts and natural essential oils and confers to your skin an excellent firming, draining and invigorating action.

**LIPO-REDUCING AND THERMOACTIVE** Soft and silky cream, it is the best partner to fight the persisting roundness. It acts in a precise way on the adipose localised accumulations, thanks to the lipolytic effect of its natural active ingredients. The unusual association between vegetal extracts and caffeine, gives to the product slimming and lipolytic properties, provoking an important draining effect on the cutaneous circulation. The cream's activity is supported by the heating action of METHYL NICOTINATE.

**DRAINING** This cream battles rebel and excessive roundness. The silhouette is redesigned and finds its harmony. For this reason, it results to be useful in localised slimming. It increases the basal metabolism and it facilitates the interstitial liquids' circulation reducing the imperfections of the cellulite and giving tone to the tissues with immediately visible results.

**LIPO-REDUCING** Soft and silky cream, it is the best partner to fight the persisting roundness. It acts in a precise way on the adipose localised accumulations, thanks to the lipolytic effect of its natural active ingredients. The unusual association between vegetal extracts and caffeine, gives to the product slimming and lipolytic properties, provoking an important draining effect on the cutaneous circulation.

100CMD500000000

100SIND100000000

### ESSENTIAL Draining

Active ingredients  
Cosmetic properties

**Centella Extract**

This extract facilitates the preservation of vascular walls' tone and elasticity, it contrasts the excessive endothelial permeability and restores the normal balance between capillary circulation and cell trophism. It is recommended also in case of cellulite with microcirculatory deficit and in case of alterations to capillary permeability

**Laminaria Seaweed**

It is very useful in order to contrast the lymphatic stasis which provokes swellings and sense of heaviness to the legs. Poor circulation and localized adiposity facilitate cellulite's formation. These unicellular and pluricellular sea organisms have mineralizing and skin-protecting properties by acting deeply on the reduction of the so-called "orange peel"

**Green Tea Extract** This extract is mainly composed of polyphenols and theophylline. Polyphenols are responsible of the phytocomplex's high antioxidant property which carries out a protective action of the microcirculation. Theophylline, instead, activates the basal metabolism, favoring the lipolysis and the drainage of excessive liquids. It also facilitates the elimination of adipose accumulations and silhouette's remodeling.

### Essential Energy - Draining

**Lemon Essential Oil** It has high astringent, antibacterial and antioxidant properties

**Mandarin Essential Oil** It can be employed in order to constrict stretch marks and cellulite by stimulating the lymphatic circulation

**Wild Fennel Essential Oil**

**Sage Essential Oil** This oil contains vitamins, enzymes and flavonoids with stimulating properties which make it highly recommended for fighting the skin's imperfections caused by water retention

100CML500000000

### SILHOUETTE Lipo-reducing

Active ingredients  
Cosmetic properties

**Guaranà Extract**

The caffeine contained in this extract stimulates the adipose tissue by increasing the thermogenesis. By consequence, there is a greater energy consumption in the form of heat due to a greater oxidation of nourishing elements as the free radicals. Furthermore, it is full of tannins, vitamins and mineral salts which give to this extract astringent and healthy properties on the peripheral circulation.

**Chestnut Extract**

**Burdock Extract** This plant is included among those which help to drain at the cutaneous level thanks to its overall activity on the organism but also a selected action on a specific tissue, such as the cutaneous one. This is very important because the faulty functioning of this tissue obstructs the elimination of toxins produced by our organism.

**Caffeine**

This extract has lipidic properties but it's very important its ability to stimulate the drainage and the stagnant liquids' removal (anti-oedematose function). The cosmetic use of the coffee is recommended for people which present cellulite, water retention and localized adiposities. In fact, it facilitates the grease and excessive water's removal and stimulates the metabolism, the blood circulation. Then, it invigorates the tissues.

100CMTA500000000

100SINL100000000

### THERMO SILHOUETTE Lipo-reducing and Thermoactive

Active ingredients  
Cosmetic properties

**Guaranà Extract**

**Essential Bitter Orange Oil**

This oil is employed for its purifying properties and, combined with a vegetal oil to contrast the cellulite, it is highly appreciated in natural cosmetic for its precious and characteristic fragrance

**Chestnut Extract**

It is employed for its vascular-protective, anti-inflammatory and draining properties in dermo-cosmetic addressed to legs' imperfections such as edema, cellulite and defects of the microcirculation. This extract, obtained from seeds, is composed by a phytocomplex rich of saponins and flavonoids. Among the saponins, escin carries out a reduction of capillary permeability increasing its resistance and tonicity. Furthermore, it improves the lymphatic drainage

**Caffeine**

**Green Tea Extract**

**Methyl Nicotinate**

It carries out a function which causes hyperemia

### Essential Energy - Lipo-reducing

**Lemon Essential Oil**

**Bitter Orange Essential Oil**

**Wild Fennel Essential Oil** It possesses a diuretic action which makes it effective in case of water retention; it contrasts also cellulite and the accumulation of toxins

**Methyl Nicotinate**

100CMRT500000000

100SINR100000000

### SCULPTURE Firming and Invigorating

Active ingredients  
Cosmetic properties

**Ginseng Extract**

The extracts of this plant improve the tissue metabolism of dermis and epidermis. They invigorate also the subcutaneous system and confer greater turgidity to your skin

**Ginkgo Biloba**

It has an important activity in improving the cell metabolism and, by consequence, it improves the functions of the microcirculation which are perfect for the anti-cellulite treatments

**African Kigelia**

Since it is full of flavonoids, this plant has excellent tensor and firming effect able to compact the dermis with an effect similar to a real invisible and tensor reticulum.

**Essential Peppermint Oil**

This oil carries out a tonic, refreshing and purifying action because it is mainly composed of Menthol, Vitamin C, Flavonoids and Tannins

### Essential Energy - Firming

**Lemon Essential Oil**

**Peppermint Essential Oil**

**Camphor** It is quickly absorbed and it produces a strong sense of cooling. It has invigorating and firming properties

**Menthol** It carries out an important refreshing and invigorating action by facilitating the circulation in tired and swollen legs



500ml  
16,9 fl oz



100ml  
3,38 fl oz

# Belax

## Synergies

**DRAINING** This synergy carries out an integrative and adjuvant action in draining treatments; its effect is increased thanks to the presence of LEMON, MANDARIN, WILD FENNEL and SAGE essential oils

**FIRMING** This synergy carries out an integrative and adjuvant action in firming and invigorating treatments; its effect is increased thanks to the presence of CAMPHOR, MENTHOL and to the LEMON and PEPPERMINT essential oils

**LIPO-REDUCING** This synergy carries out an integrative and adjuvant action in firming and lipo-reducing treatments; its effect is increased thanks to the warming action of METHYL NICOTINATE and to the LEMON, WILD FENNEL and BITTER ORANGE essential oils





# Relax

## matè e chocolat

### Matèâne - Massage Butter

It stimulates the skin's activity with an effective moisturizing and slimming action. The treatment is studied in order to slim down and reshape the silhouette, especially in the area of hips, legs and glutes, by creating a strong draining action.

### Oligosal - Activator Salt

It is a combination of Himalayan crystal salts with lemon, bitter orange and sage essential oils in order to moisturize, drain and smooth. Natural oils soften and nourish your skin; the delicate mechanic exfoliant action of the salt softly removes dead cells and skin's thickenings. It gives brightness leaving your skin velvety and soft.

### Massage Detox - Massage Cream

This cream is specifically studied in order to contrast cellulite. It is a slimming and reshaping product which carries out a lipolytic action by contrasting liquid's retention. It gives nourishment and hydration preserving the skin's elasticity and improving its compactness. The regular use limits the loss of skin's tone giving the appropriate degree of hydration that keeps your skin tonic and dynamic.

### Detox Matè - Body Cream

Slimming and reshaping body cream that carries out a lipolytic action by contrasting liquid's retention. It gives nourishment and hydration preserving the skin's elasticity and improving its compactness. The regular use limits the loss of skin's tone giving the appropriate degree of hydration that keeps your skin tonic and dynamic.

100MCBUT500

#### Matèâne

Active Ingredients  
Cosmetic properties

**Caffeine** This extract has lipidic properties but it is very important its ability to stimulate the drainage and the stagnant liquids' removal (anti-oedematose function). The cosmetic use of the coffee is recommended for people who present cellulite, water retention and localized adiposities. In fact, it promotes the fats and excessive water removal, it stimulates blood circulation and metabolism and it tones the tissues

**Peppermint Essential Oil** This oil promotes a refreshing, tonic and purifying action because it is mainly composed of Menthol, Vitamin C, Flavonoids and Tannins

**Cocoa Oil** It has a high content of oleic acid and it is perfect for its lipolytic action

**Matè Extract** YERBA MATE helps your body to expel toxins and excessive liquids by contrasting water retention and imperfections due to cellulite

100MCSAL500

#### Oligosal

Active Ingredients  
Cosmetic properties

**Orange Bitter Essential Oils** This oil is employed for its purifying properties and, combined with a vegetal oil to contrast cellulite, it is highly appreciated in natural cosmetic for its precious and characteristic fragrance

**Lemon Essential Oils** It improves the circulation and it is able to strengthen the venous capacity by obstructing the liquids' stagnation. For this reason, it is employed in the cellulite care

**Salvia Officialis Essential Oil** This oil contains vitamins, enzymes and flavonoids with stimulating properties that make it highly recommended for fighting the skin's imperfections caused by water retention

**Himalayan Crystal Salts** They have high depurative properties and they carry out an important osmotic and exfoliant action

100MCMAS500

#### Massage Detox

Active Ingredients  
Cosmetic properties

**Caffeine**

**Guarana Extract** The caffeine contained in this extract stimulates the adipose tissue by increasing the thermogenesis. By consequence, there is a greater energy consumption in the form of heat due to a greater oxidation of nourishing elements as the fatty acids.

**Green Tea Extract** This extract is mainly composed of polyphenols and theophylline. Polyphenols are responsible of the phytocomplex's high antioxidant property that carries out a protective action of the microcirculation. Theophylline, instead, activates the basal metabolism, favoring the lipolysis and the drainage of excessive liquids. It also facilitates the elimination of adipose accumulations and silhouette's remodeling

**Matè Extract**

100MCASS250

250ml  
8,45 fl.oz



500ml  
16,9 fl.oz



#### Detox Matè

Active Ingredients  
Cosmetic properties

**Caffeine**

**Laminaria Seaweed Extract** It is very useful in order to contrast the lymphatic stasis that provokes swellings and sense of heaviness to the legs. Poor circulation and localized adiposity facilitate cellulite's formation. These unicellular and pluricellular sea organisms have mineralizing and skin-protecting properties by acting deeply on the reduction of the so-called "orange peel"

**Green Tea Extract**

*"Matè and other infusions' ritual is sacred. For other cultures this ritual is ceremonial and it needs the right timing". Following the same philosophy, RELAX is glad to present the anti-cellulite shock treatment Matè e Chocolat, a grouping of cosmetic products for wellbeing & Spa treatments.*

#### Ritual of usage

1. Apply Butter Massage on the areas of the body to be treated by realising a brief massage
2. Put the Activator Salt on the areas treated with the Butter creating a strong exfoliant action
3. Nebulise the Active Concentrate on both products creating a real emulsion. In this way the Activator Salt will be solubilised and it will give an osmotic effect to your skin
4. Remove everything with a sponge soaked in lukewarm water; nebulise the Draining Serum or Lipo-reducing Serum according to the needs of the chosen treatment
5. Spread everything with Massage Cream until the product is completely absorbed





250ml  
8,45 fl. oz

250ml  
8,45 fl. oz

100MCSIED250

100MCSIEL250

100MCATT500



### Draining Matè

Active ingredients  
Cosmetic properties

#### Ximenynic Acid

**Caffeine**  
**Laminaria Seaweed Extract** It is very useful in order to contrast the lymphatic stasis that provokes swellings and sense of heaviness to the legs. Poor circulation and localized adiposity facilitate cellulite's formation  
**Peppermint Essential Oils**

**Lemon Essential Oils** It improves the circulation and it is able to strengthen the venous capacity by obstructing the liquids' stagnation. For this reason, it is employed in the cellulite care

**Matè Extract**  
**Centella Extract** This extract facilitates the preservation of vascular walls' tone and elasticity, it contrasts the excessive endothelial permeability and restores the normal balance between capillary circulation and cell tropism

### Lipolyse Matè

Active ingredients  
Cosmetic properties

**Mandelic Acid** It possesses exfoliant products and it is employed for chemical peeling on the body  
**Ximenynic Acid** Chemical compound highly pure extracted by sandalwood seeds with lipolytic properties  
**Caffeine** This extract has lipidic properties but it is very important its ability to stimulate the drainage and the stagnant liquids' removal  
**Bitter Orange Essential Oils** This oil is employed for its purifying properties and, combined with a vegetal oil to contrast cellulite  
**Peppermint Essential Oils**  
**Burdock Extract** This plant is included among those that help to drain at the cutaneous level thanks to its overall activity on the organism  
**Guarana Extract** The caffeine contained in this extract stimulates the adipose tissue by increasing the thermogenesis. By consequence, there is a greater energy consumption in the form of heat due to a greater oxidation of nourishing elements as the fatty acids  
**Matè Extract** YERBA MATE helps your body to expel toxins and excessive liquids by contrasting water retention and imperfections due to cellulite

**Chestnut Extract** It is employed for its vascular-protective, anti-inflammatory and draining properties in dermo-cosmetic properties addressed to legs' imperfections such as edema, cellulite and defects of the microcirculation

### Elixir Detox

Active ingredients  
Cosmetic properties

**Mandelic Acid**  
**Tartaric Acid from Grapefruit** It is employed for exfoliant products' formulation  
**Apple Extract** This extract provides exfoliant, firming and invigorating action. Then, it keeps your skin soft and it prevents the natural dehydration process  
**Bitter Orange Essential Oils**

#### Peppermint Essential Oils

**Lemon Essential Oils**  
**Enzymatic Bioliquified of Red Grape** The polyphenols contained are considered the most powerful existing anti-free radicals  
**Enzymatic Bioliquified of Wheat Bran** It carries out an important action against free-radicals.

# Relax mate' e chocolat

### Draining Matè - Draining Serum

This serum has been formulated in order to contrast skin's imperfections of the cellulite and stagnation of cutaneous liquids that provoke swelling and give to the skin an irregular and unstable aspect. All the active ingredients contained assure the final result.

### Lipolyse Matè - Lipo-reducing Serum

It is a lipo-reducing treatment, based on natural extracts, which offers an intense slimming and reshaping action especially in the area of hips, legs and glutes.

### Elixir Detox - Active Concentrate

Draining solution suited for treatment and prevention of imperfections caused by alterations of venous and lymphatic microcirculation of the legs. It fulfils a strong slimming and reshaping action, especially in the area of hips, legs and glutes, by guaranteeing an increment of liquids' drainage in the tissues.





100BSRT50000000

100BSL500000000

100BSD500000000


**500ml**  
 16,9 fl. oz

100CFI500000000


**500ml**  
 16,9 fl. oz

100CCT100000000


**1000ml**  
 33,81 fl. oz

# Belax

## Bath&Shower ACTIVE FOAM Firming and Invigorating

Active ingredients  
Cosmetic properties

**[Active Water] Organic Helichrysum Flowers** They possess astringent and soothing properties

**Ginkgo Biloba Extract**  
It has an important activity in improving the cell metabolism and, by consequence, it improves the functions of the microcirculation which are perfect for anti-cellulite treatments

## Bath&Shower ACTIVE FOAM Moisturizing

Active ingredients  
Cosmetic properties

**[Active Water] Organic Cornflowers** They are full of decongestant and anti-inflammatory substances

**Chamomile Extract**  
It has high astringent, balancing, anti-inflammatory and soothing properties for sensitive skins

## Bath&Shower ACTIVE FOAM Draining

Active ingredients  
Cosmetic properties

**[Active Water] Lilac Flowers** They have high ability to strengthen the skin's self-repair

**Green Tea Extract** This extract is mainly composed of polyphenols and theophylline. Polyphenols are responsible of the phytocomplex's high antioxidant property which carries out a protective action of the microcirculation. Theophylline, instead, activates the basal metabolism, favouring the lipolysis and the drainage of excessive liquids. It also facilitates the elimination of adipose accumulations and silhouette's remodeling.

## Fluid moisturizing cream

Active ingredients  
Cosmetic properties

**Sunflower Oil**  
It contains linoleic acid and oleic acid, full of Vitamin E, with high emollient and moisturizing properties

**Sweet Almond Oil**  
This oil is soothing, emollient and useful against burns, stretch marks and dry skin  
• **Lecithin** • **Tocopherol** • **Vitamin C**  
This is a complex with high moisturizing properties which help to restore the skin's elasticity. It is a powerful antioxidant and it plays an important role in the collagen's formation

## Conductive cream TEKAR

Active ingredients  
Cosmetic properties

**Mineral Oils**  
Their high concentration guarantees an excellent fluidity during every type of treatment

## Bath & Shower Active Foam

Our line ACTIVE FOAM bath and body products is particularly functional and it proposes a heady and magic ritual. Its recipe surprises for intense emotions which can offer to the sense of smell and to sensitive skins

**FIRMING AND INVIGORATING** Enriched with Extract of organic Helichrysum flowers and with Ginkgo Biloba, it does not attack the delicate lipidic balance of cutaneous tissues and it gives a firming and invigorating effect protecting your epidermis and leaving it fresh and velvety

**MOISTURIZING** The addition of Organic Cornflowers and Chamomile extract does not attack the delicate lipidic balance of cutaneous tissues and it offers a moisturizing and soothing effect acting on skin elasticity

**DRAINING** The Lilac Flowers and Green Tea extract does not attack the delicate lipidic balance of cutaneous tissues and it stimulates the microcirculation and it gives a draining effect

**CONDUCTIVE CREAM TEKAR** This cream is produced with a high concentration of mineral oils which permit the fluidity of the handpiece for a capacitive and resistive treatment

**FLUID MOISTURIZING CREAM** This cream is full of nourishing and restorative active ingredients, it is able to moisturize deeply the dry skin. The presence of Sweet Almond Oil leaves your skin tonic and elastic, respecting the physiological balance. It can be employed even on the most sensitive skins





100FF5000000000

100FF10000000000

100FF30000000000

### SCULPTURE MUD Firming and Invigorating

**Active ingredients**  
Cosmetic properties

**Sunflower Oil**  
It contains linoleic acid and oleic acid, full of Vitamin E, with high emollient and moisturizing properties

**Sweet Almond Oil**  
This oil is soothing and emollient and useful against burns, stretch marks and dry skin

**Lecithin · Tocopherol · Vitamin C**  
This is a complex with high moisturizing properties which help to restore the skin's elasticity. It is a powerful antioxidant and it plays an important role in the collagen's formation

**African Kigelia Extract**  
Full of flavonoids, this plant has excellent tensor and firming effect able to compact the dermis with an effect similar to a real invisible and tensor reticulum

**Green Clay**  
**Ginseng Extract**  
This extract improves the tissue metabolism, they invigorate also the subcutaneous system and confer greater turgidity to your skin

**Olio Essenziale di Menta Piperita**  
Composed of Menthol, Vitamin C, Flavonoids and Tannins, it carries out a refreshing, firming and tonic action

**Camphor**  
It is quickly absorbed and it produces a strong sense of cooling. It has invigorating and firming properties

**Menthol**  
It carries out an important refreshing and invigorating action by facilitating the circulation in tired and swollen legs

**Ginkgo Biloba Extract**  
It improves the cell metabolism and functions of the microcirculation; it is perfect for the anti-cellulite treatments

100FC5000000000

100FC10000000000

100FC30000000000

### THERMO SILHOUETTE MUD Thermoactive anti-cellulite

**Active ingredients**  
Cosmetic properties

**Sunflower Oil**  
**Methyl Nicotinate**  
It carries out an action which causes hyperemia

**Sweet Almond Oil**  
**Essential Sicilian Lemon Oil**  
**Lecithin · Tocopherol · Vitamin C**

**Caffeine**  
This extract has lipolytic properties but it's very important its ability to stimulate the drainage and the stagnant liquids' removal (anti-oedematose function). The cosmetic use of the coffee is recommended for people which present cellulite, water retention and localized adiposities

**Green Clay**  
**Centella Extract**  
This extract facilitates the preservation of vascular walls' tone and elasticity, it contrasts the excessive endothelial permeability and restores the normal balance between capillary circulation and cell trophism. It is recommended also in case of cellulite with microcirculatory deficit and in case of alterations to capillary permeability

**Essential Bitter Orange Oil**  
This oil is employed for its purifying properties and, combined with a vegetal oil to contrast the cellulite, it is highly appreciated in natural cosmetic for its precious and characteristic fragrance

**Essential Fennel Oil**  
It possesses a diuretic action which makes it effective in case of water retention; it contrasts also cellulite and the accumulation of toxins

**Laminaria Extract**  
It is very useful in order to contrast the lymphatic stasis which provokes swellings and sense of heaviness to the legs. These unicellular and pluricellular sea organisms have mineralizing and skin-protecting properties by acting deeply on the reduction of the so-called "orange peel"

100FS5000000000

100FS10000000000

100FS30000000000

### ACTIVE MUD Anti-cellulite

**Active ingredients**  
Cosmetic properties

**Spiruline Seaweed**  
The high protein and lipidic content allows the formation of a barrier against loss water through evaporation by carrying out a draining and vasodilatory effect

**Essential Lemon Oil**  
It improves the circulation and it strengthens the venous capacity by obstructing the liquids' stagnation. It is recommended for cellulite care and in case of tired and heavy legs

**Urea**  
It possesses keratolytic and moisturizing properties, that is, it is able to remove dead cells giving vitality and softness to your skin

**Sodium Chloride**  
Functional substance with a high osmotic power and it is ideal to battle the excessive liquids

**Green Clay**  
It absorbs the excessive sebum, it eliminates the impurities. Furthermore, it alleviates irritations and gives brightness and energy to the tissues facilitating the cell renewal

500ml  
16,9 fl. oz

1000ml  
33,81 fl. oz

3000ml  
105,82 Oz



**Muds**  
**ACTIVE MUD ANTI-CELLULITE** This soft and creamy mud easily lies down on every part of your body, it does not trickle and it acts in a few minutes. After the first application the skin is already more tonic and smoother. Then, when the treatment goes on, the imperfections lessen, the accumulations alleviate and, day by day, the treated areas have a new harmony. Thanks to the mix of phytoextracts, seaweeds, sea salt, lemon and clay essential oil, this cream ensures an effective modelling action in the most critical areas of the body (arms, belly, hips, legs and gluteus). Furthermore, the osmotic exchange of the mud facilitates the draining action and it intensifies the functionalities of the principles of the product.

**FIRMING AND INVIGORATING** A firming and invigorating mask-mud for gluteus, thighs, hips, abdomen, breast, arms. Thanks to the innovative ACTIVE-COMPLEX, helps to reactivate the cutaneous circulation and to improve skin's elasticity. The synergic action of vegetal extracts, of camphor and menthol, bring to the skin a draining and firming ice effect, releasing your skin free from toxins and improving the circulatory system for an immediate lightness sensation. It acts efficiently in order to restore a natural silhouette and to contrast atony's problems and cutaneous relaxation.

**THERMOACTIVE ANTI-CELLULITE** Its exclusive formulation ensures an overall intervention strategy towards the cellulite's imperfections. The pool of functional substances helps to reshape the silhouette fighting intensively the cellulite and localised adiposities, by carrying out five synergic and complementary actions: draining, reducing, smoothing, thermoactive and precautionary.







# Belax

## Hands and feet Care

### **Creams**

Regenerating for hands  
Emollient for feet

### **Salts for feet**

Draining and Fatiguing  
Refreshing and Sanitizing

### **Paraffin**

Azulene  
Titanium  
Chlorophyll  
Honey





# Relax

100ECM250000000

100ECM500000000

100ECP250000000

100ECP500000000

100SPA500000000

100SPA1000000000

100SPA3000000000

100SPB500000000

100SPB1000000000

100SPB3000000000

250ml  
8,45 fl.oz  
500ml  
16,9 fl.oz  
1000ml  
33,81 fl.oz  
3000ml  
105,82 Oz

## SMOOTHLY Hands Cream

Active ingredients  
Cosmetic properties

### Sunflower Oil

It contains linoleic acid and oleic acid, full of Vitamin E, with high emollient and moisturizing properties

### Sweet Almond Oil

This oil is soothing, emollient and useful against burns, stretch marks and dry skin

### Carnauba Wax

It has emollient, sheathing, thickening and filming properties

### Lactic Acid

Organic acid with moisturizing and PH balancing effect; it's also an excellent skin conditioning

### • Lecithin • Tocopherol • Vitamin C

This is a complex with high moisturizing properties which help to restore the skin's elasticity. It is a powerful antioxidant and it plays an important role in the collagen's formation

**Oat Extract** it possesses moisturizing and soothing properties

### Chamomile Extract

It has high astringent, balancing, anti-inflammatory and soothing properties for sensitive skins

## NUTRITIVE Feet Cream

Active ingredients  
Cosmetic properties

### Sunflower Oil

### Sweet Almond Oil

### Carnauba Wax

### Lactic Acid

### • Lecithin • Tocopherol • Vitamin C

### Aloe Extract

It possesses an extraordinary ability to penetrate and moisturize deeply your skin

### Urea

It possesses keratolytic and moisturizing properties, that is, it is able to remove dead cells giving vitality and softness to your skin

### Essential Peppermint Oil

Composed of Menthol, Vitamin C, Flavonoids and Tannins, it carries out a refreshing, firming and tonic action

## DRAINING SALT Draining and Fatiguing Salts

Active ingredients  
Cosmetic properties

### Sea Salts

The salt has the important ability to attract on the top of the epidermis the stagnant liquids and to carry out a draining and moisturizing action on cutaneous tissues

### Essential Tea Tree Oil

### Essential Bitter Orange Oil

This oil is employed for its purifying properties and, combined with a vegetal oil to contrast the cellulite, it is highly appreciated in natural cosmetic for its precious and characteristic fragrance

### Essential Fennel Oil

It possesses a diuretic action which makes it effective in case of water retention; it contrasts also cellulite and the accumulation of toxins

### Essential Calabria Mandarin Oil

This oil stimulates the lymphatic circulation; it is more effective if employed with other essential oils which highlight its properties

## REFRESHING SALT Refreshing and Sanitizing Salts

Active ingredients  
Cosmetic properties

### Sea Salts

### Essential Tea Tree Oil

This oil is extracted through distillation directly from melaleuca alternifolia tree leaves, which is an Australian endemic plant. Its technical properties carry out an important antiseptic action

### Essential Lemon Oil

It improves the circulation and it strengthens the venous capacity by obstructing the liquids' stagnation. For this reason, it is employed in the cellulite care and in presence of tired and heavy legs

### Essential Peppermint Oil

This oil is mainly composed of Menthol, Vitamin C, Flavonoids, Tannins. It gives a refreshing, tonic and purifying action to the essential oil.

## Regenerating hands Cream

The main feature of this cosmetic is surely represented from the high quantity of antioxidants in its formulation. Thanks to the presence of natural ingredients this cream alleviates, moisturizes, offers comfort and protection. It has a particular texture which is absorbed quickly and does not leave your hands greased. This product can be classified as highly skin friendly. Its main goal is offering to your skin an emollient, moisturizing and antioxidant action.

## Emollient feet Cream

This is an emulsion which encloses in one gesture the fulfilment of your feet's requirements. Its enriched formulation with precious vegetal oils gives to your skin compactness, elasticity and nourishment. Furthermore, some natural actives have been added to its formulation, offering to your skin an extraordinary moisturizing, soothing and refreshing action, reinforced from the presence of essential oils. This cream tonifies and revitalizes conferring a pleasant lightness sensation.

## SALTS FOR FEET

### Draining and Fatiguing

They are appropriate for regulate and normalize the transpiration in order to soften the callosity and confer compactness and vitality to tired and heavy feet. This is a salt which calms your tired feet giving to the skin a freshness and wellbeing sensation. A synergic mix of active ingredients which stimulates the blood circulation ensuring a regenerating, purifying and deodorizing action.

### Refreshing and Sanitizing

Their natural formulation, is appropriate even for delicate and sensitive skins: it possesses a mix of sea salts with essential oils which takes care of your feet, offering them a pleasant wellbeing sensation. This product, specific for footbath, has emollient, astringent and refreshing properties. Then, it sanitizes and purifies your feet's skin.





100PC5000000000

100PA5000000000

100PM5000000000

100PT5000000000

2x500ml  
2x16.9 fl.oz

# Relax

## Chlorophyll

Active ingredients  
Cosmetic properties

Paraffin

## Azulene

Active ingredients  
Cosmetic properties

Paraffin

**Azulene**  
Azulene is a liposoluble substance with soothing, decongestant and anti-inflammatory properties

## Honey

Active ingredients  
Cosmetic properties

Paraffin

Highly pure mineral oil which, if applied on your skin, forms a hydrolipidic film which avoids loss water from superficial layers reducing the dehydration and maintaining your skin silky and soft, giving a smooth effect

## Titanium Dioxide

Active ingredients  
Cosmetic properties

Paraffin

**Titanium Dioxide**  
Natural mineral which respects and guarantees the normal balance of your skin

## Paraffin

This treatment offers a prolonged wellbeing and warmth sensation for hands and feet. In fact, this product smooths the skin, alleviates the reddening and makes the manicure easier and hydrates deeply your skin, reducing the thickening and hardenings, softening the cuticles and making your nails strong and shiny.







Technical-practical courses addressed to team of professionals of the aesthetic world

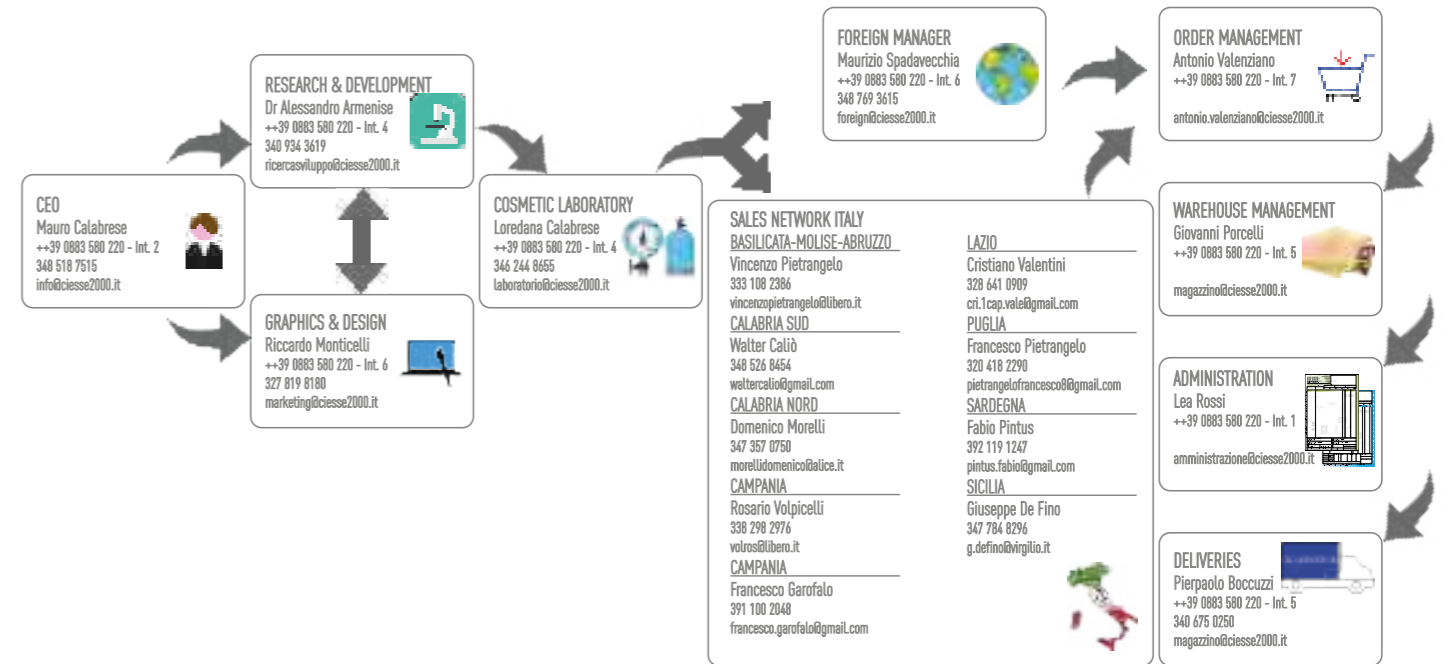
- Sector operators
- External sellers
- Sales assistants
- Promoters

By taking part to these days, you have the opportunity to experience the products usage techniques and to know the overall proposal with notions about the efficiency of the components and of active and functional ingredients contained in our products.

**Epilation training course - Brazilian**  
**Epilation training course - Sugar Paste**  
**Technical-Demonstrative Day**  
**Relax**

**PROGRAMMA**  
 Argomenti trattati:  
 - Tecniche di epilazione  
 - Preparazione e utilizzo dei prodotti  
 - Sicurezza e igiene  
 - Consigli per il cliente

**Informazioni Generali:**  
 - Durata: 2 ore  
 - Costo: 150€



100A0400000000  
Relax line poster  
1000 x 700mm



110A1800000000  
Relax Beauty Box  
For 12 products  
410 x 300 x 250mm



100A1500000000  
Relax Folder  
270 x 110mm



catalogo



social



@relax.ciesse



**LABORATORI** s.r.l.

Via Curatoio, 28/B Z.I. Boccadoro - 76125 Trani (BT) Italy

Ph. ++39 0883 580220 Fx. ++39 0883 502147

[www.ciesse.eu](http://www.ciesse.eu)

e.mail: [info@ciesse2000.it](mailto:info@ciesse2000.it)

**MADE IN ITALY**

Distribuito da / Distributed by / Distribué par / Distribuido por :

