

# ATELIER VANIA



LOOKBOOK  
2021

## Heels for everyone

Elegant, glamorous, refined and sophisticated, Atelier Vanìa shoes are designed and realized specifically from 40 to 46.

Atelier Vanìa is a luxury brand, it was born with the desire to realize the dream of all those people who loves female shoes but who do not find a satisfactory answer on the current market.

Our commitment is to guarantee an opportunity that until now, people who wear shoes from 40 to 46, didn't have: to enhance their uniqueness by wearing the shoes of their dreams.

## Brand

HOW CAN WE BEST DEFINE OUR BRAND? Inclusion, emotion, uniqueness and comfort.

The brand boasts with enthusiasm a now gained experience in the footwear sector and in the management of the family business. The shoes are made by expert hands of master shoemakers and with attention to detail which characterized only the Made in Italy. The care and dedication we put into our work are aimed at every single pair of shoes. High quality materials, combined with refined and sophisticated modeling, are essential ingredients for us.

The founder, Alfredo Vanìa, born in 1974, started the Atelier Vanìa project in 2019. The love for female shoes and in particular for heels has been handed down since 1937, year in which grandfather Alfredo, born in 1901, established one of the first heel factories (Tacchificio) in Italy, calling it Tacchificio Meridionale. The evolution of Tacchificio is with his son Giacomo who brings the innovation and changes the name to Vanplast. Today, Vanplast is led by the founder of the Atelier Vania brand.

The uniqueness of the heels of the Atelier Vania Brand are a distinctive sign compared to the shoes currently on the market. The shoes are 100% Made in Italy.





# ESME

This Zebra print loafer has been developed on supple Italian calf leather infused with a light sheen. The bold monochromatic print is juxtaposed with a flat almond toe shape that can match almost any outfit as a refined statement piece.



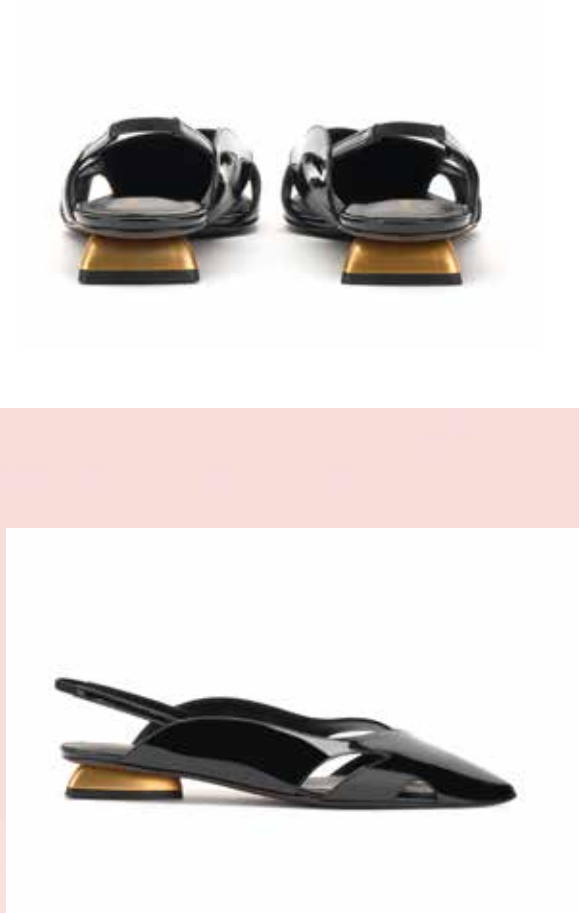
External Composition: PATENT  
LEATHER  
Internal Composition: LEATHER  
Sole: 100% LEATHER  
Heel height: 2 cm  
100% Made in Italy





# AURA

The Aura shoe is a daring take on a traditional flat shoe. The sharp toe shape creates a bold statement whilst the cut-outs on the sides add a sense of intrigue and sensuality to the design. The 20mm triangle heel, chromed in matte gold ensures this design can traverse easily from day to evening.



External Composition: PATENT  
LEATHER  
Internal Composition: LEATHER  
Sole: 100% LEATHER  
Heel height: 2 cm  
100% Made in Italy



## GYPSUM

This signature design is our take on an evening ankle boot that embodies elegance and a timeless quality. Our unique 80mm matte gold 'wave' heel offsets the black patent toe wrap and our stretch ankle sock allows for effortless movement, no matter the occasion.



External Composition: PATENT  
LEATHER - NEOPRENE  
Internal Composition: LEATHER  
Sole: 100% LEATHER  
Heel height: 8,5 cm  
100% Made in Italy



# ABALONE

Inspired by the Abalone crystal, this low shoe imbues the subtle confidence of sophisticated daywear. A flattering geometric peep-toe upper in butter soft, black suede is contrasted with an elegant 20mm triangle heel chromed in matte gold, adding a luxurious touch of handmade Italian craftsmanship.



External Composition: SUEDE  
Internal Composition: LEATHER  
Sole: 100% LEATHER  
Heel height: 2 cm  
100% Made in Italy





# BRUCITE

Brucite is a 55mm peep toe pump, the ideal height that invokes bold femininity whilst providing stable support for all day wear. The cut-out interior design of the upper extends the length of the leg and provides architectural balance with the divine peep toe.



External Composition: PATENT  
LEATHER

Internal Composition: LEATHER

Sole: 100% LEATHER

Heel height: 5,5 cm

100% Made in Italy





## GYPSUM

We are proud to introduce our Dolomite boot which embodies laid-back refinement with any ensemble. The soft-stretch neoprene technical fabric hugs the ankle ensuring a flattering foot silhouette, whilst the black patent cut out adds a touch of traditional femininity.



External Composition: PATENT  
LEATHER - NEOPRENE  
Internal Composition: LEATHER  
Sole: 100% LEATHER  
Heel height: 5,5 cm  
100% Made in Italy





# LOLITE

The Lolite is a 20mm quintessential point toed flat. The cut out upper on the inside of the foot flatteringly extends the length for the wearer whilst enjoying all the comforts of wearing a low shoe. Combined with a water snake heel cap and geometric island heel this is an essential foot-wear staple to any wardrobe.



External Composition: PATENT  
LEATHER - ELAPHE

Internal Composition: LEATHER

Sole: 100% LEATHER

Heel height: 2 cm

100% Made in Italy



## ZIRCON

A founder favourite, our Zircon design is a refreshing take on a summer mule. When worn, the mesh strap sections visibly disappear against the skin, creating the illusion of thin tan strapping holding in the foot. Combined with our geometric hourglass heel shape, this design is eye-catching whilst offering practical support for the wearer.



External Composition: TEXIL - NAPPA

Internal Composition: LEATHER

Sole: 100% LEATHER

Heel height: 6 cm

100% Made in Italy





# LAVA

Our 80mm pump steps into the evening with monochromatic grandeur. The patent toe design creates a powerful balance with the water snake heel cap that sits on our unique wave heel. The lines are clean and minimal, offering an unexpected twist on a timeless classic.



External Composition: PATENT LEATHER -  
ELAPHE LEATHER

Internal Composition: LEATHER

Sole: 100% LEATHER

Heel height: 8,5 cm

100% Made in Italy







# KIMBERLITE

With a refined palette of tan, black and matte gold this design is both sophisticated and practical. The soft black suede knot is flattering on the toe whilst the supple calf strap provides the slip-on ease of a mule. This shoe sits on a base of our geometric hourglass heel.



External Composition: VELVET -  
NAPPA

Internal Composition: LEATHER

Sole: 100% LEATHER

Heel height: 6 cm

100% Made in Italy



# NEBULA

Our first over-the-knee boot has been handcrafted with all the elements required for contemporary winter dressing. The sleek stretch suede upper runs past the knee, providing a contrasting texture with the patent pointed toe. Designed with a 55mm island heel, it makes for an ideal height for wearing all day - and evening.



External Composition: PATENT AND  
NEOPRENE

Internal Composition: LEATHER

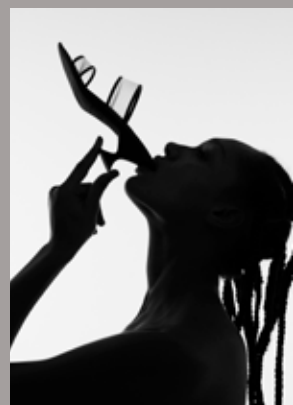
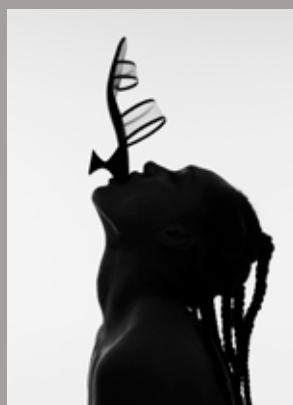
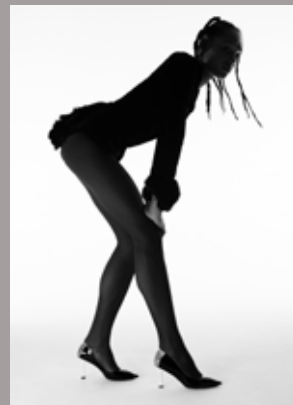
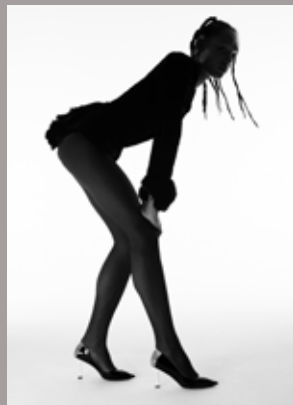
Sole: 100% LEATHER

Heel height: 55 mm

100% Made in Italy

# LOOKBOOK

2021



## ATELIER VANIA

Women's shoes from 40 to 46

[www.ateliervania.com](http://www.ateliervania.com)



[\\_atelier\\_vania\\_](https://www.instagram.com/_atelier_vania_)



Atelier Vania

[info@ateliervania.com](mailto:info@ateliervania.com)



ATELIER VANIA