

# Syscons – Company Profile

---

*Experience the Future Today*



# Who We Are



**10**  
OFFICES

**210+**  
HEADCOUNTS

**85%**  
MSC GRADUATES

- Digital Transformation
- Food & Beverage
- Manufacturing
- Fashion and Retail
- Consumer Package Good
- Pharma and Chemical

**45%**  
Supply Chain and Manufacturing

**10%**  
BI & GRC

**45%**  
Digital Innovation

**70+**  
CLIENTS

- Bank and Insurance
- Public Sector



SINCE  
**2001**

## OUR EXPERTISE ON...

We are an SAP Partner with strong background on SCM, Manufacturing, ERP and analytics.

**4**  
BEST PARTNERSHIPS

We are proud to be ...



**+83%**  
EMPLOYEES

**+71%**  
REVENUES



**13%**

## RESEARCH & DEVELOPMENT

Every year we invest **more than 13%** of our revenues in research and development for providing our best products and solutions to our local and international Clients.

## Industrial Manufacturing



## Pharma & Life Sciences

## Food & Beverage



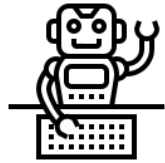
## Fashion & Luxury

## Relevant Industry References

- **Ferrero** Worldwide - Planning Integration
- **Campari** Worldwide - Planning Integration
- **Lavazza – Carte Noire** Production Integration
- **Recordati** – S&OP Implementation
- **Ducati** - Industry 4.0
- **Whirlpool-Indesit** – Planning Integration

## Connected Supply Chain solutions

Deep Dive Business Process Knowledge + Cutting Edge Technologies



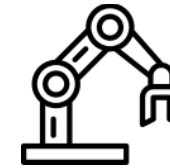
*Robot Process Automation*



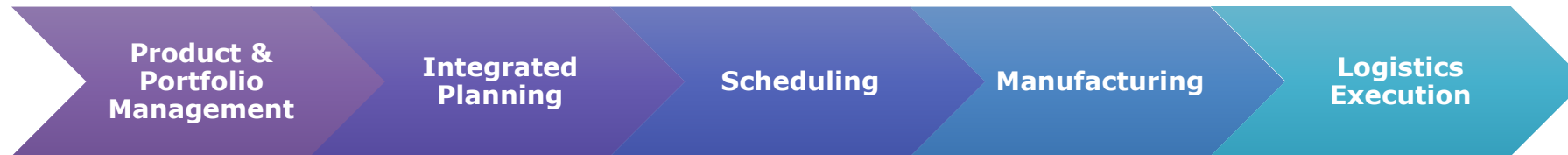
*Mobile APPs*



*Enterprise Integration*



*Industrial Automation*



**Industrial  
&  
CPG**



**Fashion  
&  
Retail**



*Cloud Re-platforming*



*Data Insights*



*IoT*



*AI & ML*

# Our Offering- Application Area



## Supply Chain

- ❑ Sales & Operation Planning
- ❑ Demand & Forecasting
- ❑ Inventory Optimization
- ❑ Supply Chain Control Tower
- ❑ Supply Chain Execution

## Manufacturing

- ❑ Advanced Planning & Scheduling
- ❑ Product Design & Formulation
- ❑ Manufacturing Operations
- ❑ Edge Computing & IIoT

## Platform & Integration

- ❑ Digital Platform SAP
- ❑ Digital Platform (Non SAP)
- ❑ Integration & Custom Developments

## Enterprise Services

- ❑ ERP & S4
- ❑ GRC & Data Privacy
- ❑ HR
- ❑ IT Strategy & Assessment

### Strategy

- IT Strategy definitions
- IT Governance

### Solution Design

- Design Thinking
- Solution assessment
- Requirements Definition

### Applications

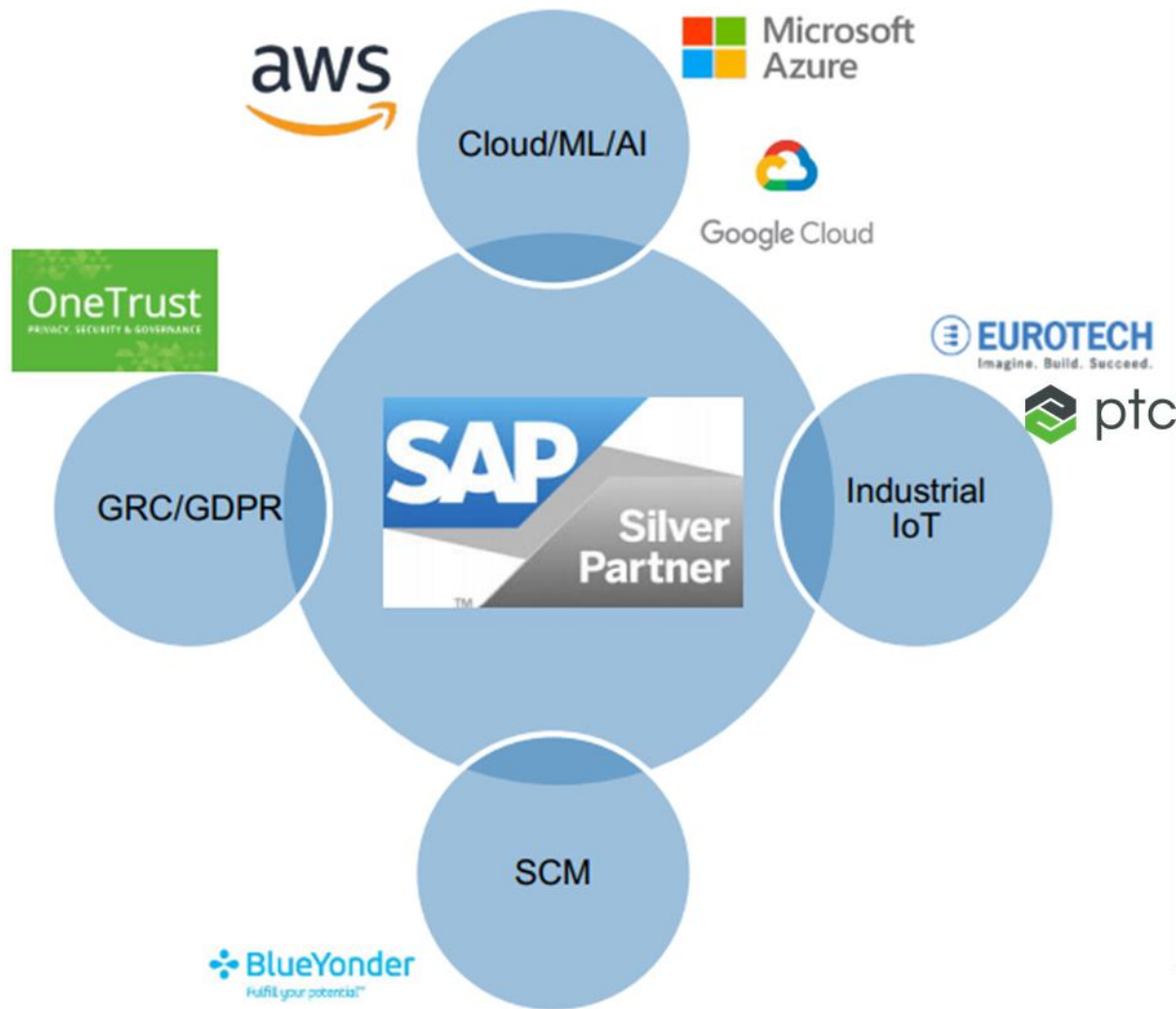
- Business blueprint definition
- GAP Analysis

### Technology

- Custom Development
- Solution Architecture

### AMS

- Full lifecycle application management



- ❑ Program/Project Management
- ❑ Platform-independent System Integrator:
  - ❑ SAP
  - ❑ Blue Yonder
  - ❑ Manhattan
- ❑ EDI – development and support
- ❑ API-led Connectivity (Mulesoft, Apigee)
- ❑ AMS (Application Maintenance Support):  
24/7 remote support service:
  - ❑ SAP IBP/APO
  - ❑ Manhattan Active Omni – Order Management System

# Successful Solutions

---

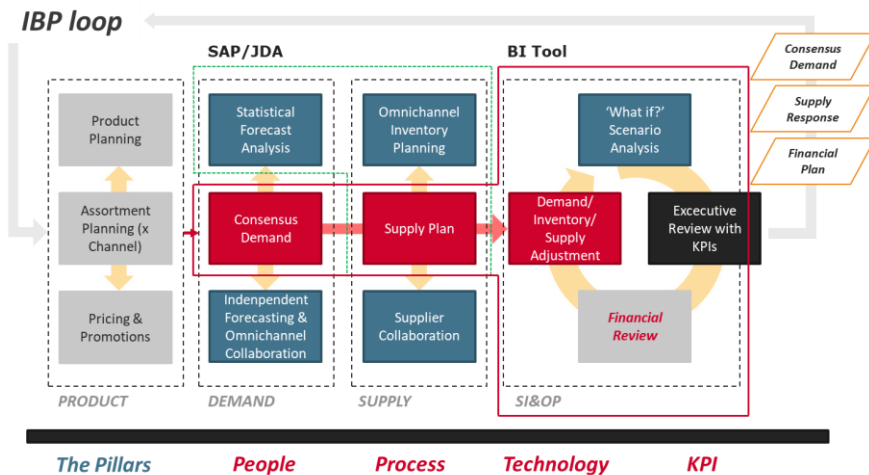
*Experience the Future Today*

**SYSCONS**  
CONNECTED SUPPLY CHAIN SOLUTIONS

---

## Integrated Business Planning

- **Product:** Product Planning, Assortment Planning, Pricing Production
- **Demand:** Statistical Forecast Analysis, Consensus Demand, Independent Forecasting & Omnichannel Collaboration
- **Supply:** Omnichannel Inventory, Supply Plan, Supplier Collaboration
- **SI&OP:** Demand/Inventory/Supply adjustment, What-If Scenario Analysis, Executive Review (KPIs), Financial Review



## Production Assistant – MES/MOM

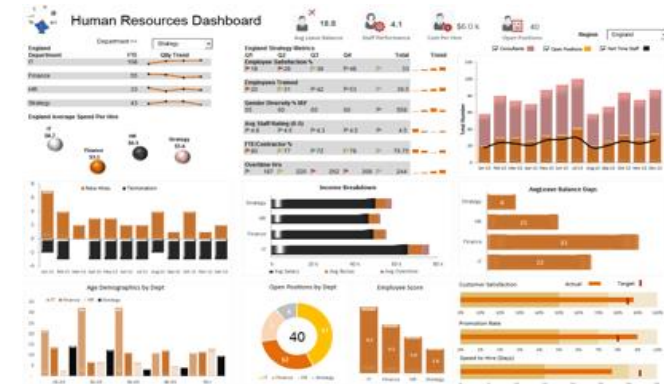
Production process digitalization

- Automatic load of production plan on intelligent devices
- Sending of processing times and count of quantities produced
- Automation of Kanban from line of product finished to line of pre-assembled
- Integration with testing machines to manage results



## HR Turnover - A smart decision support system leveraging AI

- Use Personnel data from ERP and from other sources (data lake)
- List of predicted leaving employees with a precision 80% of true leavers
- Data (results) fed to a predictive analytics platform (BI Tools)





# Industry 4.0

Digital Manufacturing & PLM

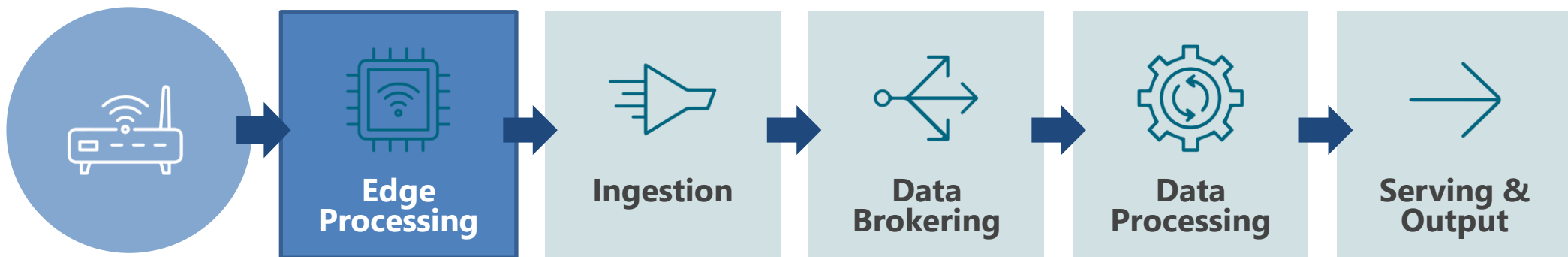
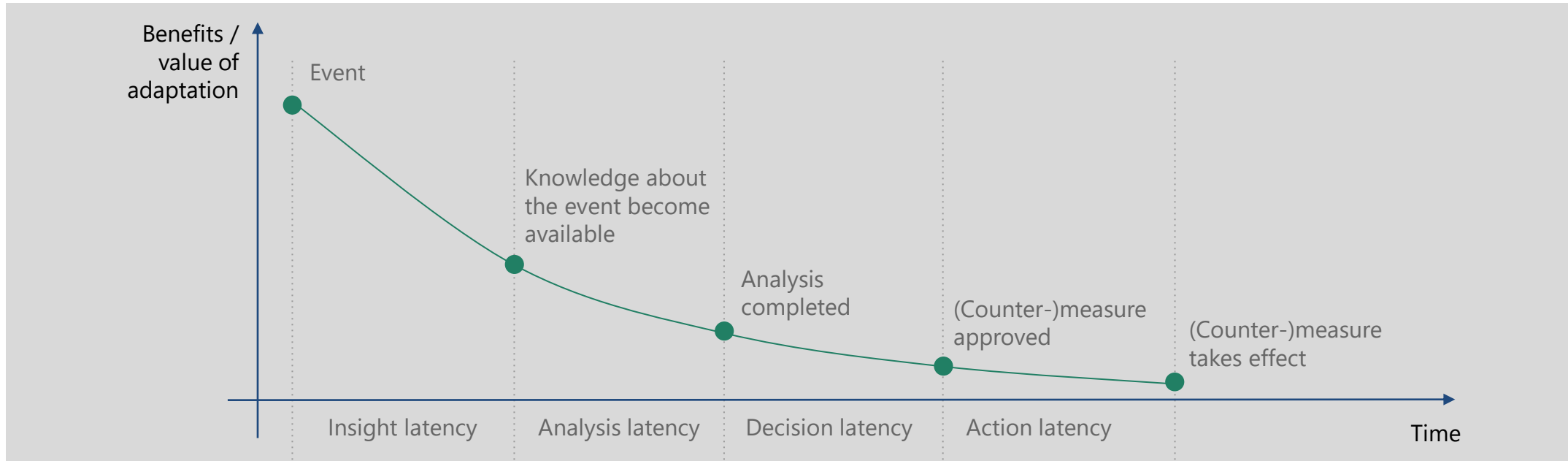
*Experience the Future Today*



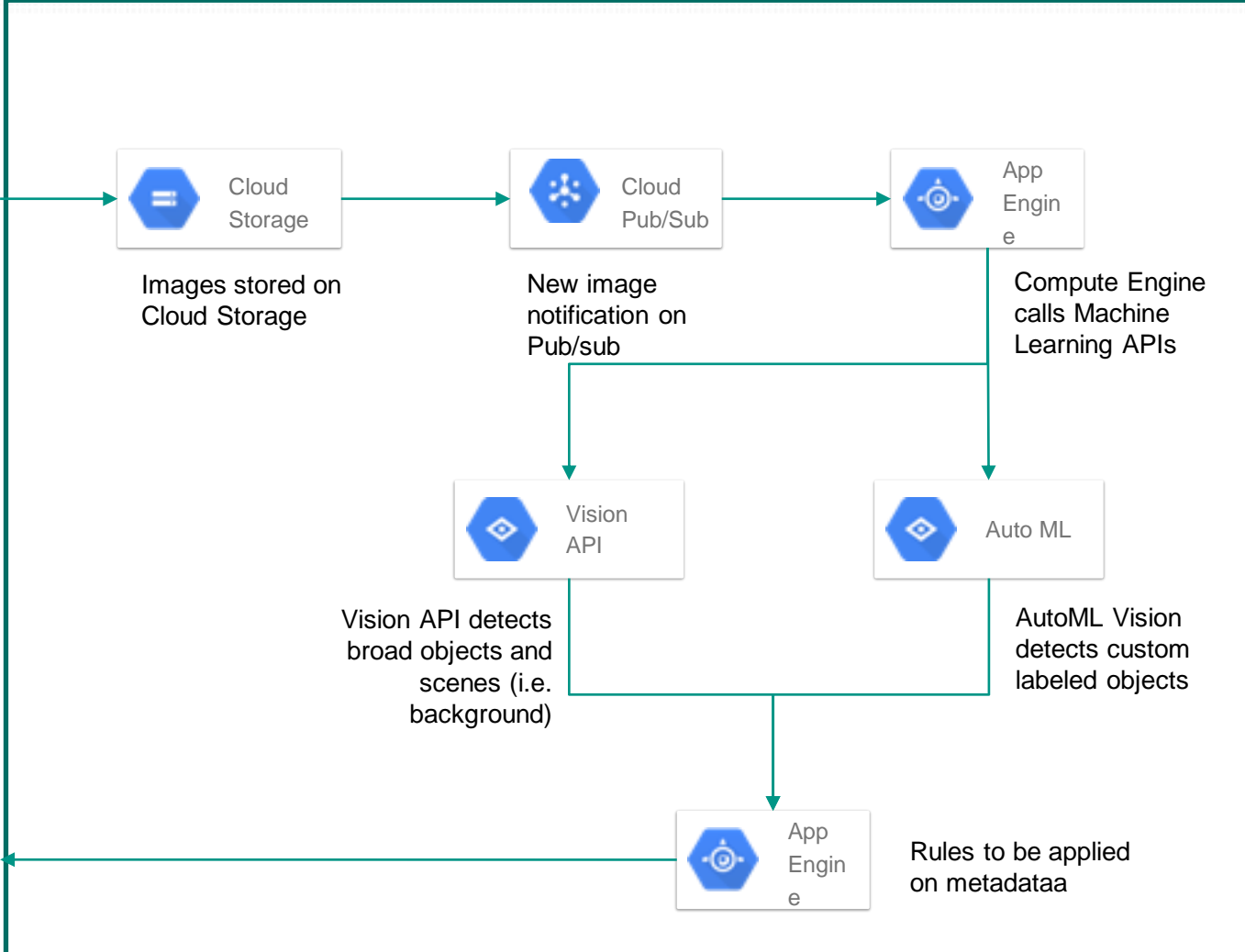
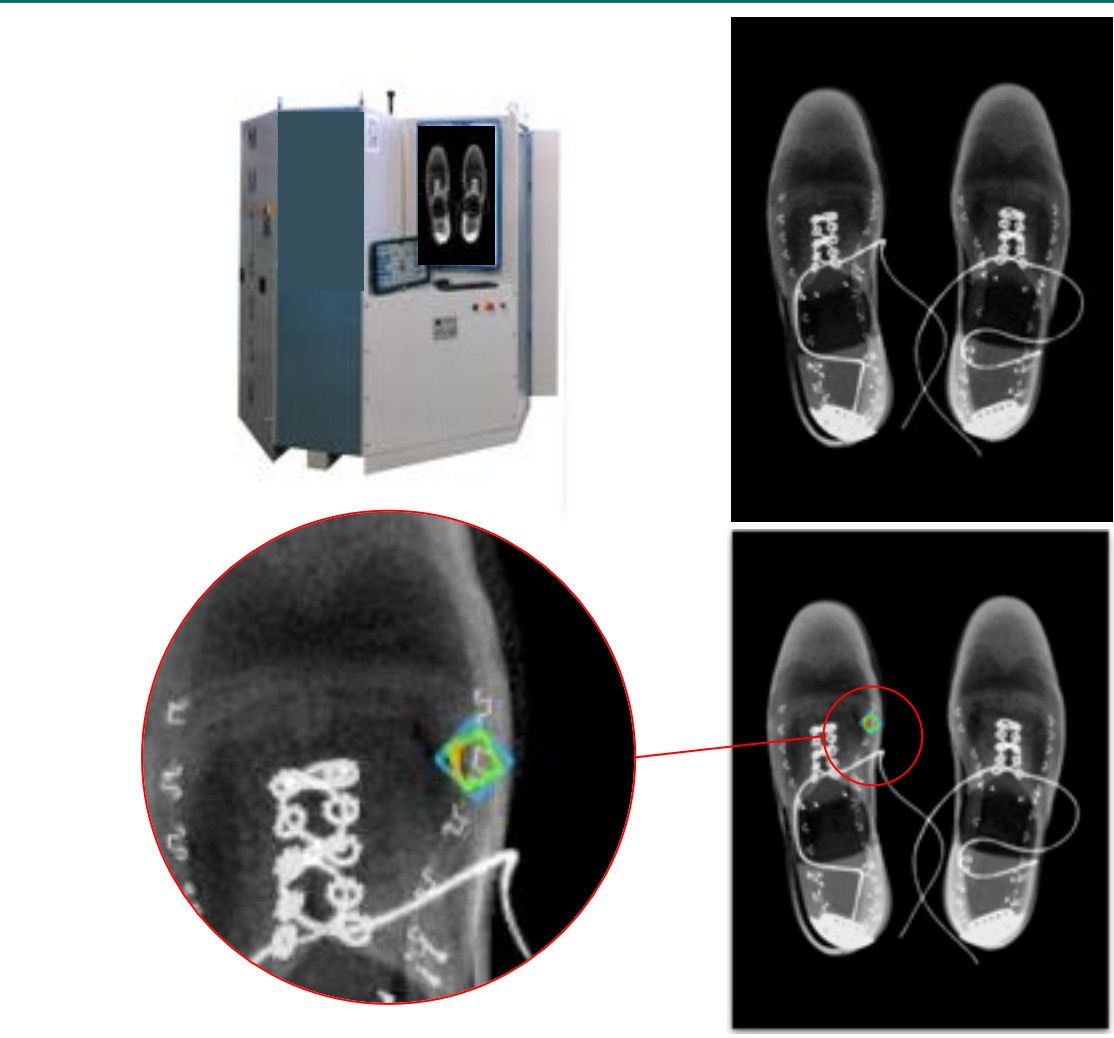
- A new set of possibilities is now available in digital manufacturing and industrial IoT space
- Focus on efficiency and visibility on manufacturing KPIs is more important than in the past
- The new Industry 4.0 paradigm is based on two pillars:
  - ***Edge computing***
  - ***Cloud computing and advance analytics***



# Benefit of IIoT Data Stream



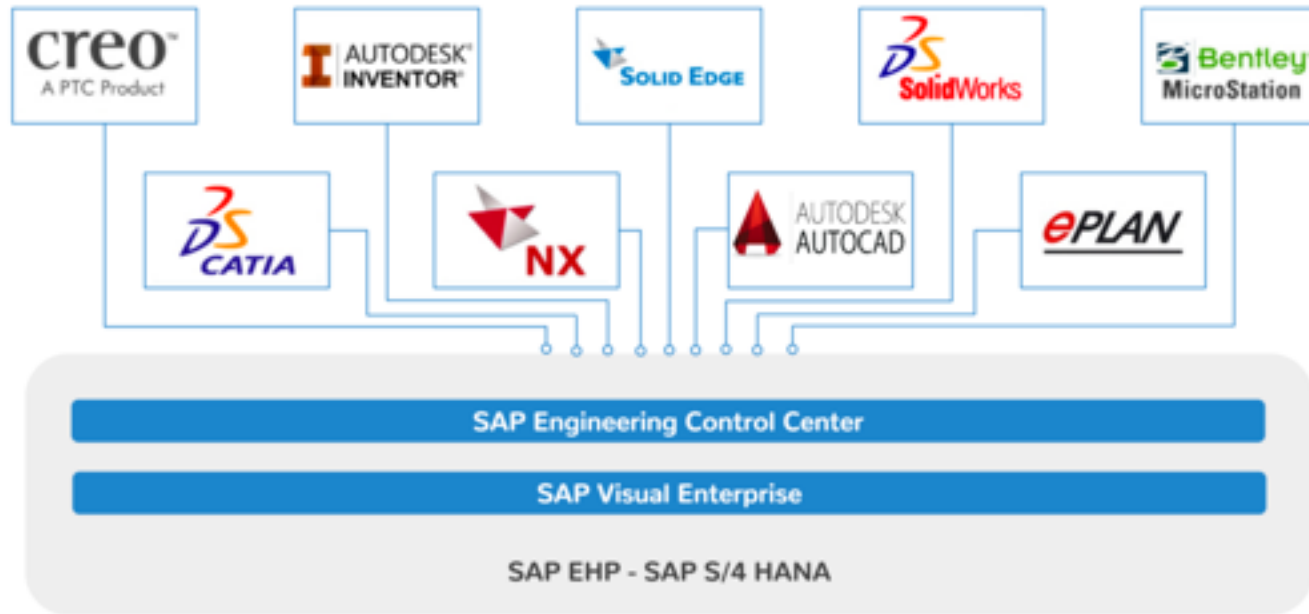
# Connected Equipment/Quality Management



## Production process digitalization

- Automatic load of production plan on intelligent devices
- Sending of processing times and count of quantities produced
- Automation of Kanban from line of product finished to line of pre-assembled
- Integration with testing machines to manage results





## Core Competences:

### **CAD Integrations:**

- Integrations with main CAD systems
- Engineering Control Center

### **PLM applications**

- SAP PLM main processes for Industrial Sector
- SAP Recipe Development for CPG
- PLM integrations for Fashion companies

### **Project and Portfolio Management**

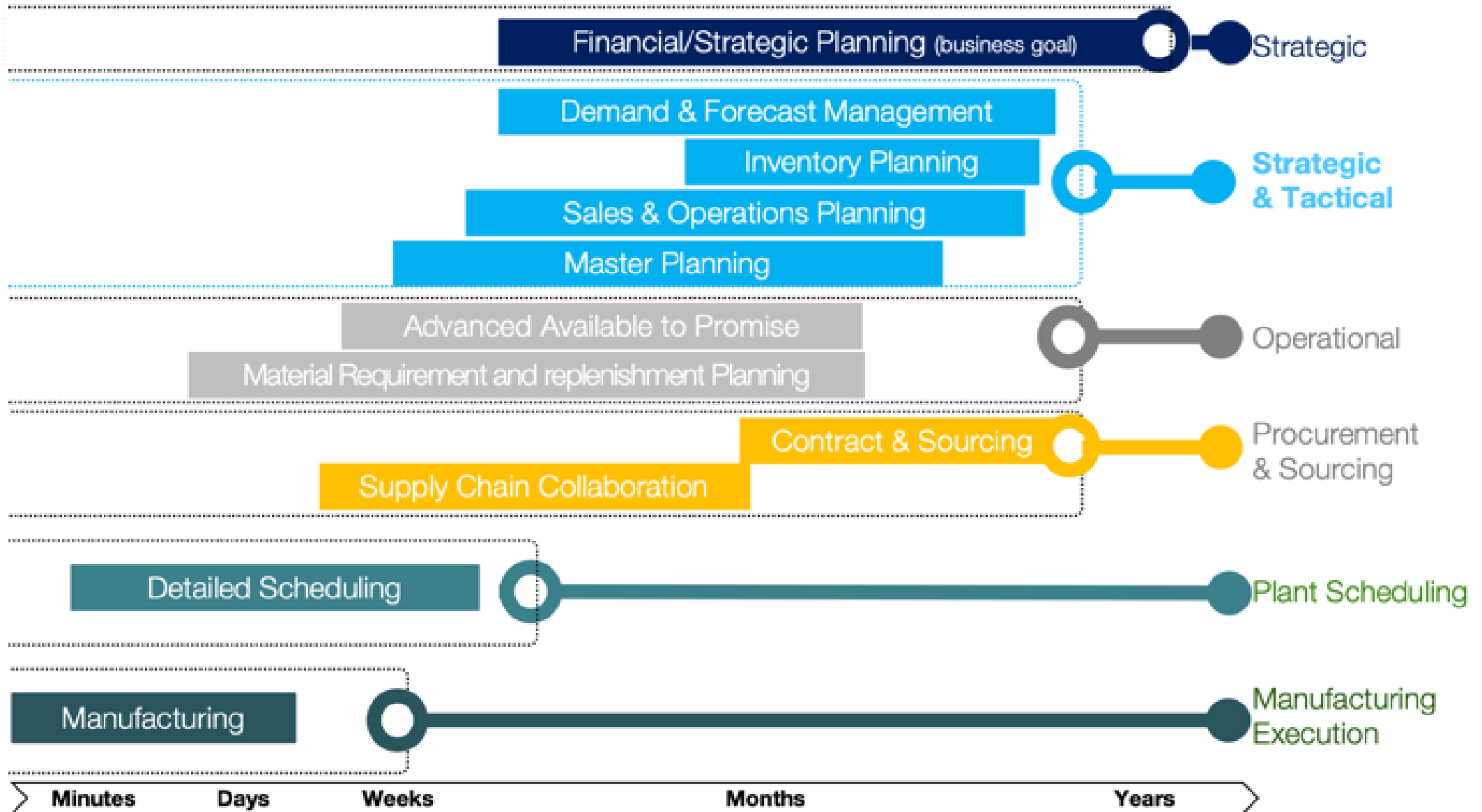
- SAP PPM
- Cloud Analytics for PPM

# Supply Chain Planning

---

*Experience the Future Today*







**01**

**Finance Integration**

**02**

**Simulations & Scenarios**

**03**

**Inventory Optimization**

**04**

**Forecast Accuracy**

**05**

**Visibility**

**06**

**Collaborative planning**



Manufacturing



Fashion



Pharma



Confectionery



White goods



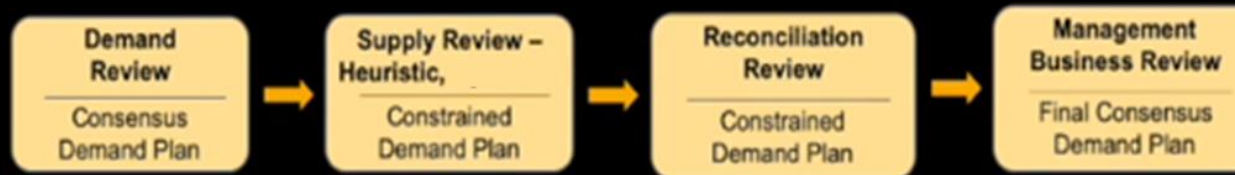
Food & Beverage



## Unified Planning Process Flow

### Tactical

Frequency: Monthly  
Horizon: 1-3 years  
Buckets: Months, Weeks



### Mid-Term Operational

Frequency: Weekly  
Horizon: 1-12 months  
Buckets: Weeks, Days



Analytics, dashboards & Reporting

### Short-Term Operational

Frequency: Daily  
Horizon: 1-12 weeks  
Buckets: Days





**01**

## PHARMA



Network visibility  
lack of integrated model



Data visibility  
Faster reaction time



**02**

## SPORTSWEAR



Forecast accuracy &  
Collaboration



Accuracy increase  
Faster forecast cycle



**03**

## DOMESTIC APPLIANCES



Integrated processes and  
systems



Business integration  
Simulation



**04**

## FOOD & BEVERAGE



Reducing inventory buffers  
Prod. Lines saturation



S&OP introduction  
Systems integration

# Warehouse Management

---

*Experience the Future Today*

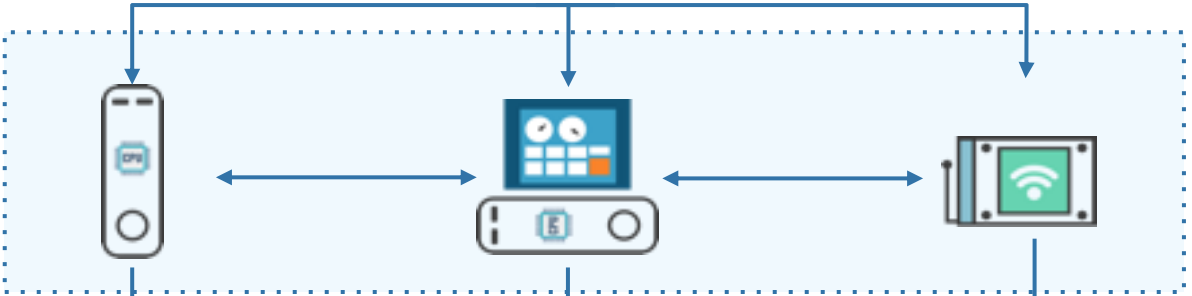
**SYSCONS**  
CONNECTED SUPPLY CHAIN SOLUTIONS

---

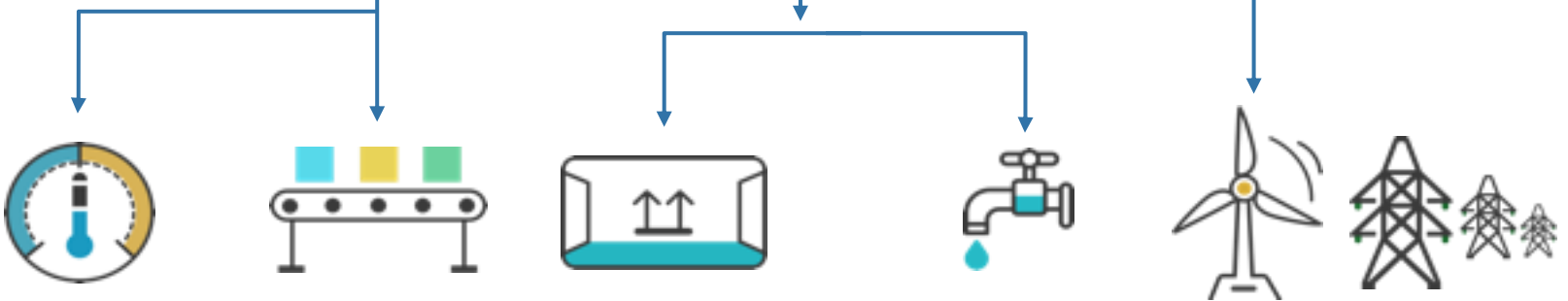
Backend and cloud applications



**Backend & Cloud Applications**



**Edge computing**

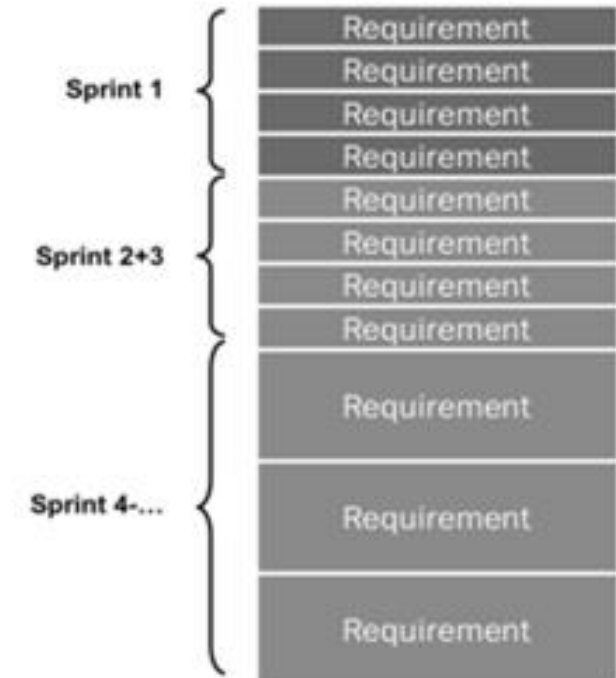


**Sensors & Devices**

# Business Benefits on EWM Migration

- Evaluation of Warehouse locations
- Evaluation of Warehouse processes
- Process Optimization
- License Cost Optimization based on logistics activity based costing (only advanced where it is really needed)
- Solution Concept, BPML and Backlog for Warehouse Software Architecture and implementation approach based on:
  - ✓ Costs
  - ✓ Complexity
  - ✓ Time to value
  - ✓ Total cost of ownership
  - ✓ Investment protection
  - ✓ SAP Roadmaps for S/4 and EWM

Item	Material	Plant	Storage Location	Warehouse	Bin	Bin Type	Bin Category	Bin Subcategory	Bin Description	Bin Status
000001	000001	000001	000001	000001	000001	000001	000001	000001	000001	000001
000002	000002	000002	000002	000002	000002	000002	000002	000002	000002	000002
000003	000003	000003	000003	000003	000003	000003	000003	000003	000003	000003
000004	000004	000004	000004	000004	000004	000004	000004	000004	000004	000004
000005	000005	000005	000005	000005	000005	000005	000005	000005	000005	000005
000006	000006	000006	000006	000006	000006	000006	000006	000006	000006	000006
000007	000007	000007	000007	000007	000007	000007	000007	000007	000007	000007
000008	000008	000008	000008	000008	000008	000008	000008	000008	000008	000008
000009	000009	000009	000009	000009	000009	000009	000009	000009	000009	000009
000010	000010	000010	000010	000010	000010	000010	000010	000010	000010	000010



**NOTE: Syscons's top digital transformation expert is Andreas Holtschulte, former SAP EWM Chief Product Owner.**