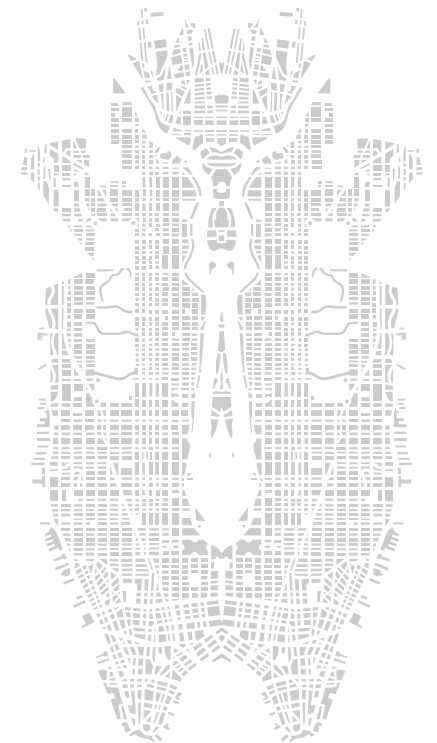


Frank&Frank

the minotaur

A gaze to find
the lost thread
in the cities built of
desires and fears.



Frank&Frank develop their project through the creation of city maps on vegetable tanned leather, laser cut and hand painted.

Always fascinated by the maps of ancient explorers, they work with the curiosity and creativity of those who want to investigate the borders and territories in which our geography is oriented: cartography is not an “aseptic” element but represents the culture and beauty that each place expresses.

All the works are unique objects open to precise thematic projects.

the minotaur project draws inspiration from the myth of the labyrinth and from the creature that inhabits it. The increasingly large, increasingly complex and labyrinthine cities of the world are now home to more than half of the world’s population.

The mythological figure of the minotaur belongs to us, an ambivalent creature partly animal partly divine, on the one hand destructive but on the other side sensitive and capable of rising. As modern Minotaurs we live in labyrinthine metropolis as creatures sometimes terrifying sometimes innocent, ready to reject and “devour” the new arrivals but also to “elevate” the places in which we live with creativity and beauty.

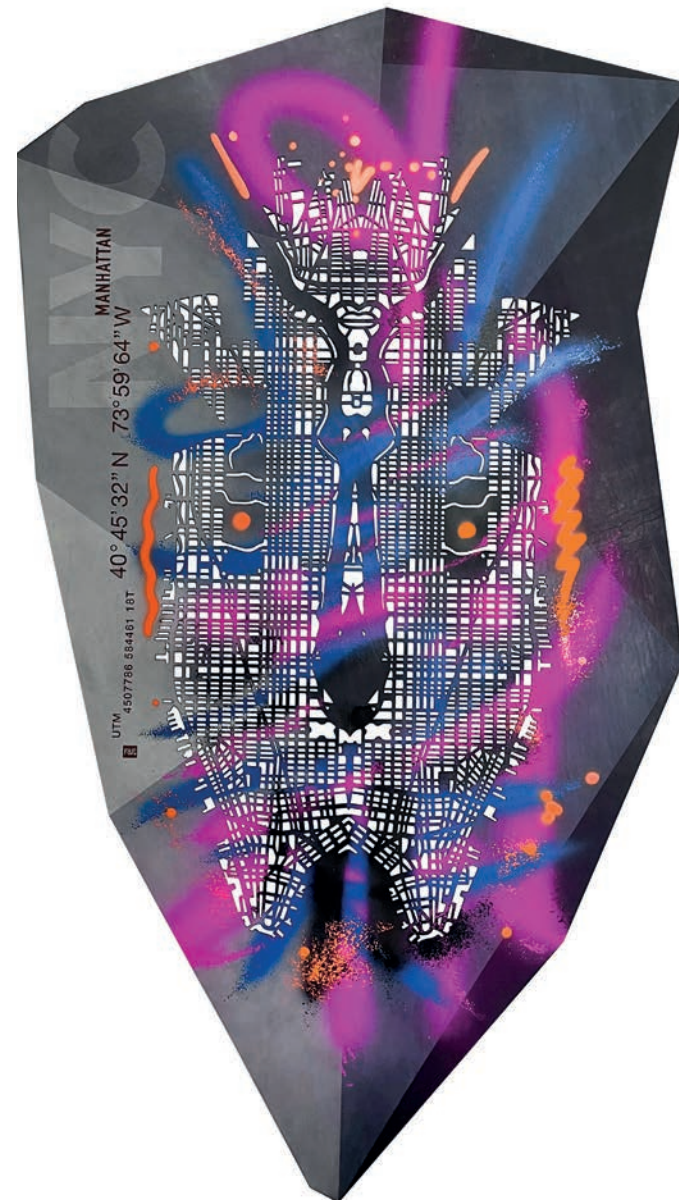
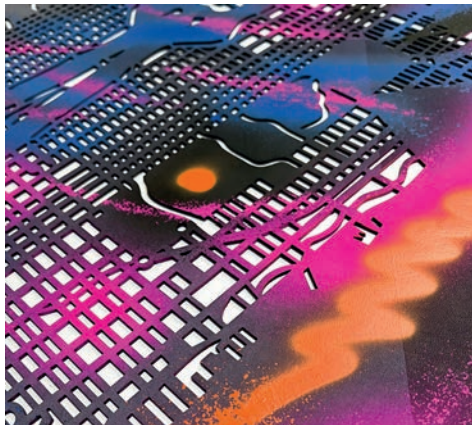
The city map is mirrored horizontally, like a Rorschach blot. An ancestral figure emerges generated by his double, a symbolic figure: the minotaur.



NYC Manhattan the minotaur

cm 75 x 130

Vegetable tanned leather
Laser cut and groove
Manual painting with aniline acrylics and sprays.
Hidden metal frame for hanging



TURIN
the minotaur
cm 105 x 140

Vegetable tanned leather
Laser cut and groove
Manual painting with aniline acrylics and sprays.
Hidden metal frame for hanging

