

A sophisticated interior scene featuring a plush, rust-colored velvet sofa with large matching cushions. In the background, a white marble bust of a classical figure is visible. In the foreground, two round, low-profile coffee tables are positioned. The table on the left is a light, warm-toned wood, and the one on the right is a darker, rich wood. Each table holds a large, curved animal horn as a centerpiece. The horn on the left is dark with a silver-colored circular end, while the one on the right is lighter with a gold-colored circular end. Both horns are supported by small, square metal stands. The background wall is dark with a warm, orange-gold light source creating a soft glow. The overall aesthetic is modern luxury with a focus on natural materials and classic art.

Zanchi

1952

Luxury decor in natural horn

Zanchi

1952

Luxury decor in natural horn

“The uniqueness of the horn
is not only given by its refined
aesthetics, but also by the
extraordinary mastery needed
to work it and shape it.”

< Giovanni Zanchi >

CONTENT

Zanchi 1952 >	5
Mission&Vision >	7
Desk accessories >	8
Art&Design >	24
Wine&Drink accessories >	30
Cutlery >	50
Table complements >	74
The importance of sharing >	96
Packaging >	98
Natural horn colour charts >	100
Information&contacts >	104



WHAT&WHY > passion and tradition

Since 1952 Zanchi has been creating luxurious accessories and objects in natural horn, trying to enhance all its shapes and shades.

Years of experiments and attempts have led Zanchi to understand all the deepest secrets of this material and the craftsmanship techniques, which have been handed down for three generations, reach today a unique level of material knowledge and attention to detail.

WHO&WHEN > a long story

Tradition, passion and innovation are the values that give life to Zanchi 1952, values closely linked to the story of a man, Giovanni Zanchi, who since adolescence has specialized in manipulate a natural, fascinating and complex material like horn. Giovanni took on the challenge of modeling an apparently indomitable material, with the aim of unleashing the extraordinary qualities that only the horn can have.

HOW&WHERE > quality warranty

This product is handcrafted in Italy using natural horn. Before reaching your hands, horn is skillfully selected and worked with passion by our craftsmen to let you admire the precious characteristics of this material. Natural horn is a material with unique and natural qualities that can lead to fine variations in shades and texture over the time. This feature is a guarantee of quality of our products and should not be attributed to a selection or manufacturing defects.



OUR MISSION > we do

Zanchi 1952 mission, today as in 1952, is to maintain the tradition of true made in Italy, offering a product of the highest quality, realized with the experience accumulated in the past and eyes to the future.

OUR VISION > we dream

Zanchi 1952 vision is to spread love and passion for craftsmanship, with the hopes of returning to appreciate the work and values behind every creations and put the man and his wisdom at the center of attention.

DESK ACCESSORIES >

Enrich your workspace with sophisticated elegance and uniqueness



PAPERWEIGHT CUBE

Description Paperweight cube in natural horn layers with brass base nickel or gold plated

Item size 60 x 60 x 65 mm

Item weight 350 g

PZHBS01BVOR is shown in pictures



VARIANTS

PZHBS01BVNK *Blonde brown horn layers and brass base nickel plated*

PZHBS01BVOR *Blonde brown horn layers and brass base gold plated*

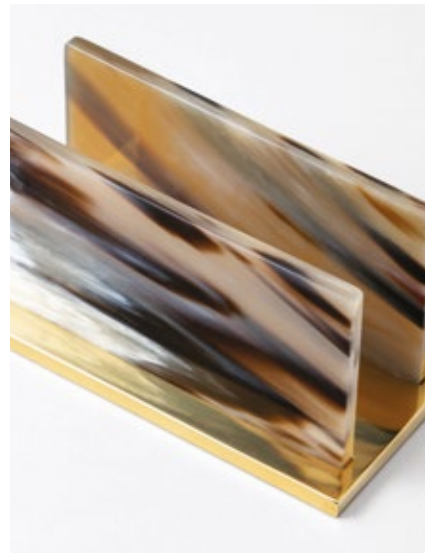
LETTER HOLDER

Description Letter holder in natural horn and rectangular brass base nickel or gold plated

Item size 120 x 60 x 60 mm

Item weight 350 g

PZHBS02BVOR is shown in pictures



VARIANTS

PZHBS02BVNK *Blonde brown horn and nickel plated brass base*

PZHBS02BVOR *Blonde brown horn and gold plated brass base*

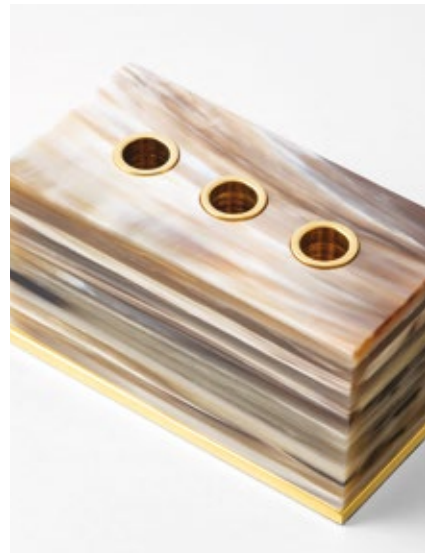
LAYERED PEN HOLDER

Description Pen holder in natural horn layers with brass applications nickel or gold plated

Item size 120 x 60 x 65 mm

Item weight 700 g

PZHBS15BVOR is shown in pictures



VARIANTS

PZHBS15BVNK *Blonde brown horn layers and nickel plated brass applications*

PZHBS15BVOR *Blonde brown horn layers and gold plated brass applications*

SQUARE PEN HOLDER

Description Pen holder with natural horn inserts and brass structure in different finishes

Item size 85 x 85 x 90 mm

Item weight 500 g

PZHBS10BBOS is shown in pictures



VARIANTS

PZHBS10BBOS *Satin brass structure and blonde white horn inserts*

PZHBS10BVOB *Bronzed brass structure and blonde brown horn inserts*

natural horn plates colour charts at page 102



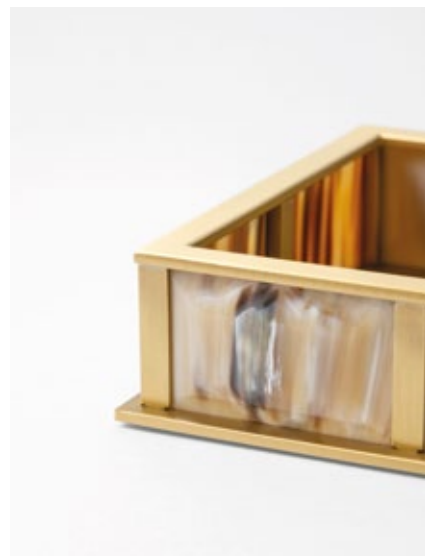
SQUARE DESK TRAY

Description Desk tray with natural horn inserts and brass structure in different finishes

Item size 150 x 150 x 45 mm

Item weight 1 kg

PZHBS09BBOS is shown in pictures



VARIANTS

PZHBS09BBOS *Satin brass structure and blonde white horn inserts*

PZHBS09BVOB *Bronzed brass structure and blonde brown horn inserts*

natural horn plates colour charts at page 102



LETTER OPENER & MAGNIFYING GLASS

Description Silver letter opener (270 mm) and magnifying glass (Ø 70 mm - H. 200 mm) with natural horn handles

Box size 320 x 150 x 40 mm

Box weight 1 kg

PZHBS23NAG is shown in pictures



VARIANTS

PZHBS23BVAG Letter opener and magnifying glass with blonde brown horn handle

PZHBS23NAG Letter opener and magnifying glass with black horn handle

natural horn tips colour charts at page 103

SMALL NATURAL HORN TIP MAGNIFYING GLASS

Description Silver magnifying glass with natural horn tip handle

Item size Ø 70 mm - H. 280 mm

Item weight 220 g

PZHBS24BVAG is shown in pictures



DETAILS

PZHBS24BVAG Handcrafted silver magnifying glass with natural horn tip handle in blonde brown colour

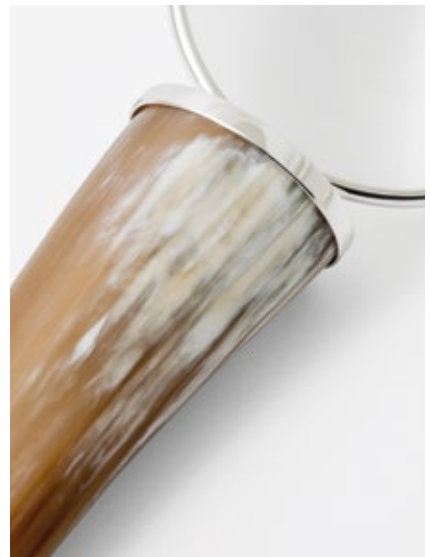
BIG NATURAL HORN TIP MAGNIFYING GLASS

Description Silver magnifying glass with natural horn tip handle

Item size Ø 100 mm - H. 360 mm

Item weight 470 g

PZHBS25BVAG is shown in pictures



VARIANTS

PZHBS25BVAG Handcrafted silver magnifying glass with natural horn tip handle in blonde brown colour

ROUND PEN HOLDER I

Description Pen holder with satin brass structure and natural horn inserts

Item size Ø 90 mm - H. 95 mm

Item weight 750 g

PZHBS17BVOS is shown in pictures



DETAILS

PZHBS17BVOS *Blonde brown horn inserts and satin brass structure*

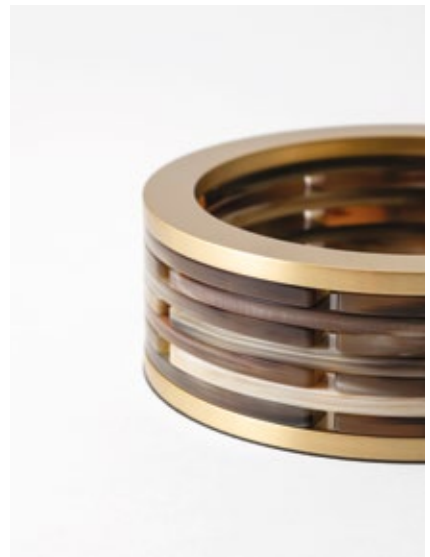
ROUND DESK TRAY I

Description Desk tray with satin brass structure and natural horn inserts

Item size Ø 140 mm - H. 45 mm

Item weight 1,3 kg

PZHBS21BVOS is shown in pictures



DETAILS

PZHBS21BVOS *Blonde brown horn inserts and satin brass structure*

ROUND PEN HOLDER II

Description Pen holder with nickel plated brass structure and natural horn inserts in blonde brown and black colours

Item size Ø 90 mm - H. 95 mm

Item weight 750 g

PZHBS18BVNK is shown in pictures



DETAILS

PZHBS18BVNK *Blonde brown horn inserts, black horn inserts and nickel plated brass structure*

ROUND DESK TRAY II

Description Desk tray with nickel plated brass structure and natural horn inserts in blonde brown and black colours

Item size Ø 140 mm - H. 45 mm

Item weight 1,3 kg

PZHBS22BVNK is shown in pictures



DETAILS

PZHBS22BVNK *Blonde brown horn inserts, black horn inserts and nickel plated brass structure*

ART&DESIGN >

Let yourself be seduced by natural beauty of Italian handicrafts



HORN SCULPTURE

Description Handcrafted sculpture in natural horn with black acrylic support and brass base in different finishes

Item size 900 x 350 x 500 mm

Item weight 8 kg

ZHID01BNNK is shown in pictures



VARIANTS

ZHID01BBOS *Blonde white horn, black acrylic support and satin brass base*

ZHID01BNNK *White black horn, black acrylic support and nickel plated brass base*

natural horn plates colour charts at page 102

SMALL HORN SCULPTURE

Description Handcrafted small sculpture in natural horn with brass base

Item size 600 x 150 x 300 mm

Item weight 3 kg

ZHID06BBOS is shown in pictures



VARIANTS

ZHID06BBOS *Blonde white horn and satin brass base*

ZHID06BBNK *Blonde white horn and nickel plated brass base*

ZHID06BNNK *White black horn and nickel plated brass base*

natural horn plates colour charts at page 102



PAIRED HORN SCULPTURE

Description Handcrafted sculpture of natural horn pair with black acrylic support and brass base

Items size 900 x 350 x 700 mm each

Items weight 8 Kg each

ZHID07BNNK is shown in pictures



VARIANTS

ZHID07BBNK *Blonde white paired horns, black acrylic support and nickel plated brass base*

ZHID07BNNK *White black paired horns, black acrylic support and nickel plated brass base*

natural horn plates colour charts at page 102

WINE&DRINK ACCESSORIES >

Inebriate yourself with the luxury of sinuous curves for your precious bottles



CHAMPAGNE HOLDER

Description Champagne holder in natural horn with silver plated brass structure

Item size 170 x 160 x 230 mm

Item weight 1,5 kg

PZHLV115BVAG is shown in pictures



DETAILS

PZHLV115BVAG Champagne holder in blonde brown horn and silver plated brass structure. This champagne holder can contain bottles with a maximum diameter of 11 cm.



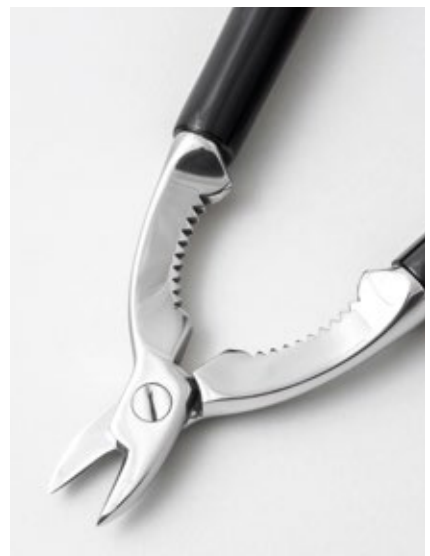
CHAMPAGNE PLIERS

Description Stainless steel champagne pliers with natural horn handles

Item size 190 x 60 x 20 mm

Item weight 150 g

PZHLV25BVIN is shown in pictures



VARIANTS

PZHLV25BVIN *Stainless steel champagne pliers with blonde brown horn handle*

PZHLV25NIN *Stainless steel champagne pliers with black horn handle*

natural horn tips colour charts at page 103

WINE HOLDER I

Description Wine holder in natural horn with nickel plated brass structure

Item size 200 x 130 x 130 mm

Item weight 1,3 kg

PZHLV17BNNK is shown in pictures



VARIANTS

PZHLV17BBNK *Blonde white horn and nickel plated brass structure*

PZHLV17BNNK *White black horn and nickel plated brass structure*

natural horn plates colour charts at page 102

WINE HOLDER II

Description Wine holder in natural horn with nickel plated brass base

Item size 210 x 120 x 180 mm

Item weight 1,2 kg

PZHLV18BBNK is shown in pictures



VARIANTS

PZHLV18BBNK *Blonde white horn and nickel plated brass structure*

PZHLV18BNNK *White black horn and nickel plated brass structure*

natural horn plates colour charts at page 102

WINE HOLDER III

Description Wine holder in natural horn with nickel plated brass base

Item size 270 x 120 x 180 mm

Item weight 1,2 kg

PZHLV19BBNK is shown in pictures



VARIANTS

PZHLV19BBNK *Blonde white horn and nickel plated brass structure*

PZHLV19BNNK *White black horn and nickel plated brass structure*

natural horn plates colour charts at page 102



PULL OUT CORKSCREW & WINE STOPPER | 2 PCS

Description Wine set composed by stainless steel wine stopper (135 mm) and corkscrew (125 mm) with steel helicoidal spiral and handcrafted natural horn oval

Box size 250 x 120 x 40 mm

Box weight 400 g

PZHLV108NIN is shown in pictures



VARIANTS

PZHLV108BVIN *Stainless steel wine set with blonde brown horn applications*

PZHLV108NIN *Stainless steel wine set with black horn applications*

natural horn tips colour charts at page 103

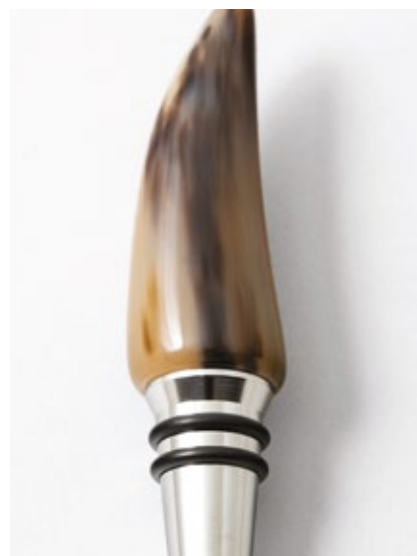
WINE STOPPERS SET | 2 PCS

Description Set of 2 stainless steel wine stoppers with natural horn applications

Box size 200 x 100 x 40 mm

Box weight 550 g

PZHLV120BVIN is shown in pictures



VARIANTS

PZHLV120BVIN *Wine stopper set in blonde brown natural horn*

PZHLV120NIN *Wine stopper set in black natural horn*

natural horn tips colour charts at page 103

WINE STOPPERS SET | 2 PCS

Description Set of 2 stainless steel wine stoppers with natural horn applications

Box size 200 x 100 x 40 mm

Box weight 550 g

PZHLV121NIN is shown in pictures



VARIANTS

PZHLV121BVIN Wine stopper set in blonde brown natural horn

PZHLV121NIN Wine stopper set in black natural horn

natural horn tips colour charts at page 103

WINE STOPPERS SET | 2 PCS

Description Set of 2 stainless steel wine stoppers with natural horn applications

Box size 200 x 100 x 40 mm

Box weight 550 g

PZHLV122BVIN is shown in pictures



VARIANTS

PZHLV122BVIN *Wine stopper set in blonde brown natural horn*

PZHLV122NIN *Wine stopper set in black natural horn*

natural horn tips colour charts at page 103

WINE STOPPERS SET | 2 PCS

Description Set of 2 stainless steel wine stoppers with natural horn applications

Box size 200 x 100 x 40 mm

Box weight 550 g

PZHLV123NIN is shown in pictures



VARIANTS

PZHLV123BVIN *Wine stopper set in blonde brown natural horn*

PZHLV123NIN *Wine stopper set in black natural horn*

natural horn tips colour charts at page 103

WINE STOPPERS SET | 2 PCS

Description Set of 2 stainless steel wine stoppers with natural horn applications

Box size 200 x 100 x 40 mm

Box weight 550 g

PZHLV124BVIN is shown in pictures



VARIANTS

PZHLV124BVIN *Wine stopper set in blonde brown natural horn*

PZHLV124NIN *Wine stopper set in black natural horn*

natural horn tips colour charts at page 103



WINE STOPPERS SET | 4 PCS

Description Set of 4 stainless steel wine stoppers with natural horn applications (from 120 mm to 150 mm)

Box size 280 x 190 x 40 mm

Box weight 900 g

PZHLV107NIN is shown in pictures



VARIANTS

PZHLV107BVIN Wine stopper set in blonde brown natural horn

PZHLV107NIN Wine stopper set in black natural horn

natural horn tips colour charts at page 103

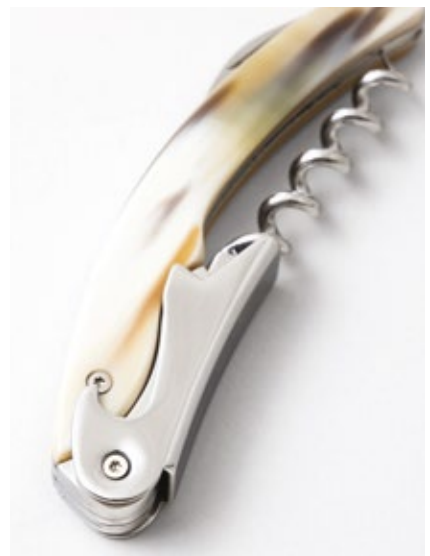
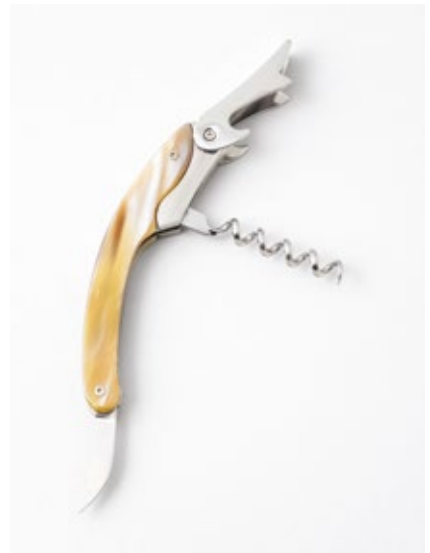
CURVED CORKSCREW

Description Stainless steel curved corkscrew with natural horn applications

Item size 115 x 30 x 15 mm

Item weight 100 g

PZHLV114BVIN is shown in pictures



VARIANTS

PZHLV114BBIN *Stainless steel corkscrew with blonde white horn applications*

PZHLV114BNIN *Stainless steel corkscrew with white black horn applications*

PZHLV114BVIN *Stainless steel corkscrew with blonde brown horn applications*

natural horn plates colour charts at page 102

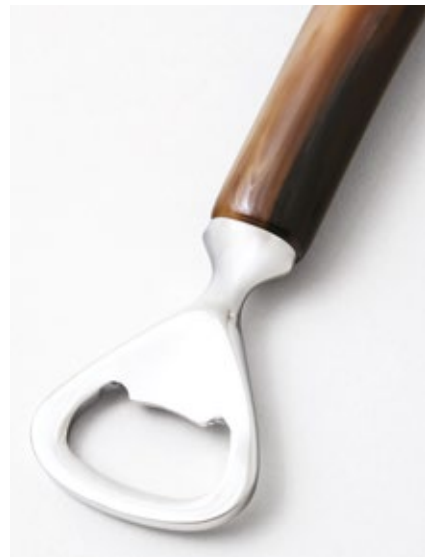
BOTTLE OPENER

Description Stainless steel bottle opener with natural horn handle

Item size 140 x 35 x 20 mm

Item weight 60 g

PZHLV113BVIN is shown in pictures



VARIANTS

PZHLV113BVIN *Stainless steel bottle opener with blonde brown horn handle*

PZHLV113NIN *Stainless steel bottle opener with black horn handle*

natural horn tips colour charts at page 103

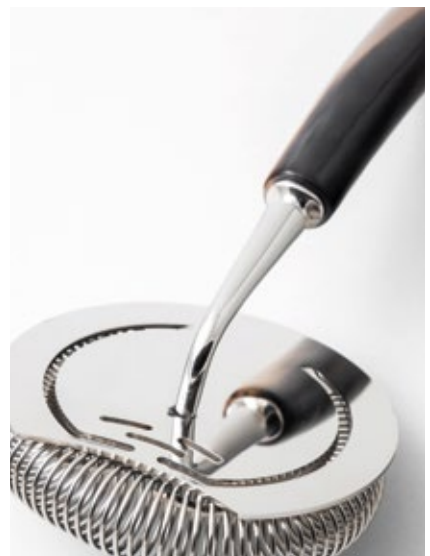
BAR STRAINER

Description Stainless steel bar strainer with handcrafted natural horn handle

Item size 200 x 95 x 70 mm

Item weight 200 g

PZHLV106BVIN is shown in pictures



VARIANTS

PZHLV106BVIN *Stainless steel bar strainer with handcrafted blonde brown natural horn handle*

PZHLV106NIN *Stainless steel bar strainer with handcrafted black natural horn handle*

natural horn tips colour charts at page 103

CUTLERY >

Savour the pleasures of the kitchen by highlighting them with the right details



NATURAL TABLE CUTLERY SET | 6 PCS

Description Stainless steel cutlery set with handcrafted natural horn handles composed by (from left to right): coffee spoon (145 mm), table spoon (215 mm), table fork (215 mm), fruit fork (185 mm), table knife (255 mm) and fruit knife (210 mm)

Box size 400 x 300 x 40 mm

Box weight 1,5 kg

PZHLV80BVIN is shown in pictures



VARIANTS

PZHLV80BVIN *Stainless steel set with handcrafted blonde brown natural horn handles*

PZHLV80NIN *Stainless steel set with handcrafted black natural horn handles*

natural horn tips colour charts at page 103

NATURAL DESSERT CUTLERY SET | 3 PCS

Description Stainless steel cutlery set for dessert with handcrafted natural horn handles composed by (from left to right): party fork (190 mm), marmalade spoon (205 mm) and dessert fork (185 mm)

Box size 280 x 190 x 40 mm

Box weight 600 g

PZHLV81BVIN is shown in pictures



VARIANTS

PZHLV81BVIN *Stainless steel set with handcrafted blonde brown natural horn handles*

PZHLV81NIN *Stainless steel set with handcrafted black natural horn handles*

natural horn tips colour charts at page 103

METROPOLITAN TABLE CUTLERY SET | 6 PCS

Description Stainless steel cutlery set with handcrafted natural horn handles composed by (from left to right): coffee spoon (145 mm), table spoon (215 mm), table fork (215 mm), fruit fork (185 mm), table knife (255 mm) and fruit knife (210 mm)

Box size 400 x 300 x 40 mm

Box weight 1,5 kg

PZHLV90NIN is shown in pictures



DETAILS

PZHLV90NIN *Stainless steel set with handcrafted black natural horn handles*

METROPOLITAN DESSERT CUTLERY SET | 3 PCS

Description Stainless steel cutlery set for dessert with handcrafted natural horn handles composed by (from left to right): party fork (190 mm), marmalade spoon (205 mm) and dessert fork (185 mm)

Box size 280 x 190 x 40 mm

Box weight 600 g

PZHLV89NIN is shown in pictures



DETAILS

PZHLV89NIN *Stainless steel set with handcrafted black natural horn handles*



FISH&SHELLFISH CUTLERY DELUXE SET | 5 PCS

Description Stainless steel cutlery with handcrafted natural horn composed by (from left to right): salmon knife (420 mm), lobster spoon (175 mm), lobster fork (175 mm), lobster pliers (220 mm) and oyster opener (155 mm)

Box size 460 x 200 x 40 mm

Box weight 1,1 kg

PZHLV83BVIN is shown in pictures



VARIANTS

PZHLV83BVIN *Stainless steel set with handcrafted blonde brown natural horn handles*

PZHLV83NIN *Stainless steel set with handcrafted black natural horn handles*

natural horn tips colour charts at page 103

FISH&SHELLFISH CUTLERY SET | 3 PCS

Description Stainless steel cutlery with handcrafted natural horn handle composed by: salmon knife (420 mm), lobster pliers (220 mm) and oyster opener (155 mm)

Box size 460 x 200 x 40 mm

Box weight 1 kg

PZHLV84BVIN is shown in pictures



VARIANTS

PZHLV84BVIN *Stainless steel set with handcrafted blonde brown natural horn handles*

PZHLV84NIN *Stainless steel set with handcrafted black natural horn handles*

natural horn tips colour charts at page 103

LOBSTER CUTLERY SET | 3 PCS

Description Stainless steel cutlery set for lobster with handcrafted natural horn handles composed by (from left to right): lobster fork (175 mm), lobster pliers (220 mm) and lobster spoon (175 mm)

Box size 280 x 190 x 40 mm

Box weight 600 g

PZHLV85BVIN is shown in pictures



VARIANTS

PZHLV85BVIN Stainless steel set with handcrafted blonde brown natural horn handles

PZHLV85NIN Stainless steel set with handcrafted black natural horn handles

natural horn tips colour charts at page 103



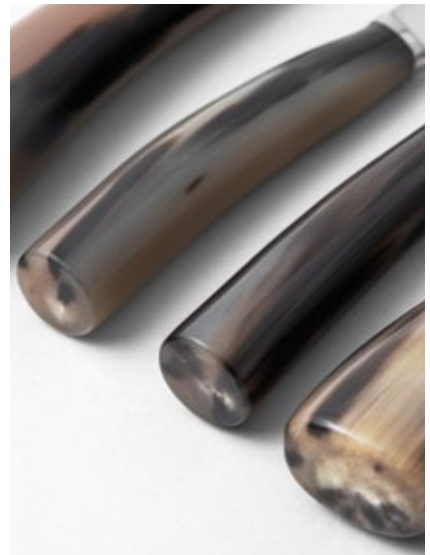
CHEESE CUTLERY SET | 6 PCS

Description Stainless steel cutlery cheese set with handcrafted natural horn handles composed by (from left to right): Soft cheese knife (245 mm), two tips knife (230 mm), butter knife (180 mm), small butter knife (160 mm), Parmesan fork and knife (110 mm)

Box size 400 x 300 x 40 mm

Box weight 1,1 kg

PZHLV82BVIN is shown in pictures



VARIANTS

PZHLV82BVIN *Stainless steel set with handcrafted blonde brown natural horn handles*

PZHLV82NIN *Stainless steel set with handcrafted black natural horn handles*

natural horn tips colour charts at page 103

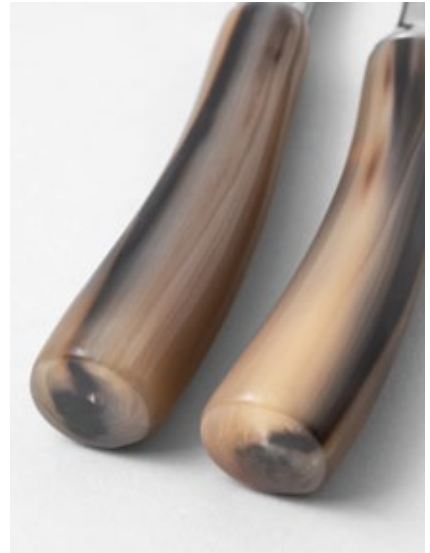
SOFT CHEESE KNIVES SET | 2 PCS

Description Stainless steel cheese knives set with handcrafted natural horn handles composed by: soft cheese knife (245 mm) and two tips (230 mm)

Box size 280 x 190 x 40 mm

Box weight 650 g

PZHLV33BVIN is shown in pictures



VARIANTS

PZHLV33BVIN Stainless steel set with handcrafted blonde brown natural horn handles

PZHLV33NIN Stainless steel set with handcrafted black natural horn handles

natural horn tips colour charts at page 103

PARMESAN SET | 2 PCS

Description Stainless steel Parmesan set with handcrafted natural horn handles composed by: Parmesan knife (110 mm) and Parmesan fork (110 mm)

Box size 150 x 150 x 40 mm

Box weight 400 g

PZHLV50BVIN is shown in pictures



VARIANTS

PZHLV50BVIN *Stainless steel set with handcrafted blonde brown natural horn handles*

PZHLV50NIN *Stainless steel set with handcrafted black natural horn handles*

natural horn tips colour charts at page 103

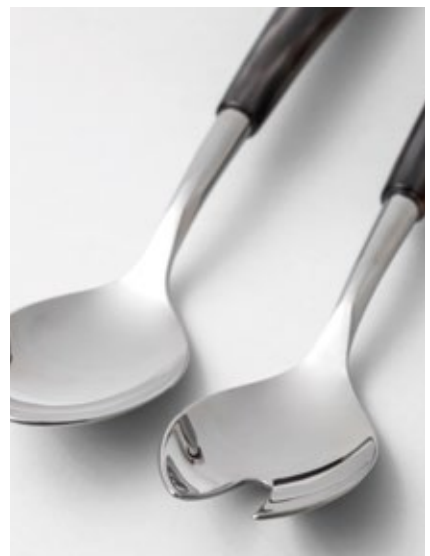
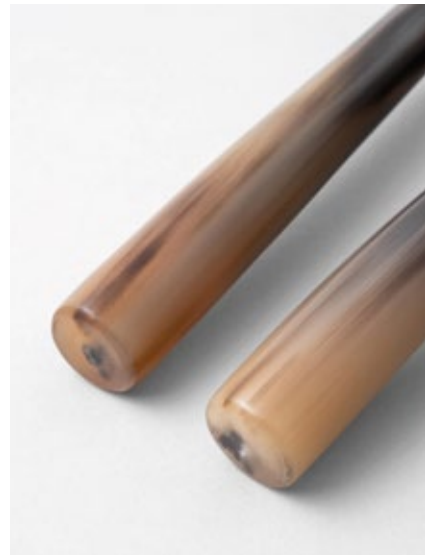
SALAD SERVERS SET I | 2 PCS

Description Stainless steel salad servers set with handcrafted natural horn handles composed by: salad spoon (240 mm) and salad two tips fork (240 mm)

Box size 280 x 190 x 40 mm

Box weight 650 g

PZHLV35BVIN is shown in pictures



VARIANTS

PZHLV35BVIN *Stainless steel set with handcrafted blonde brown natural horn handles*

PZHLV35NIN *Stainless steel set with handcrafted black natural horn handles*

natural horn tips colour charts at page 103

SALAD SERVERS SET II | 2 PCS

Description Stainless steel salad servers set with handmade natural horn handles composed by: salad four tips fork (230 mm) and salad spoon (230 mm)

Box size 280 x 190 x 40 mm

Box weight 600 g

PZHLV36NIN is shown in pictures



VARIANTS

PZHLV36BVIN *Stainless steel set with handcrafted blonde brown natural horn handles*

PZHLV36NIN *Stainless steel set with handcrafted black natural horn handles*

natural horn tips colour charts at page 103



ROAST CUTLERY SET | 2 PCS

Description Stainless steel roast cutlery set with handcrafted natural horn handles composed by: roast fork (290 mm) and roast knife (350 mm)

Box size 460 x 200 x 40 mm

Box weight 850 g

PZHLV44BVIN is shown in pictures



VARIANTS

PZHLV44BVIN *Stainless steel set with handcrafted blonde brown natural horn handles*

PZHLV44NIN *Stainless steel set with handcrafted black natural horn handles*

natural horn tips colour charts at page 103



CAKE CUTLERY SET | 3 PCS

Description Stainless steel cake cutlery set with handcrafted natural horn handles composed by: cake shovel (280 mm), pastry shovel (225 mm) and cake knife (300 mm)

Box size 360 x 250 x 40 mm

Box weight 850 g

PZHLV86BVIN is shown in pictures



VARIANTS

PZHLV86BVIN *Stainless steel set with handcrafted blonde brown natural horn handles*

PZHLV86NIN *Stainless steel set with handcrafted black natural horn handles*

natural horn tips colour charts at page 103

RISOTTO SPOON

Description Stainless steel risotto spoon with handcrafted natural horn handle

Item size 300 x 70 x 20 mm

Item weight 150 g

PZHLV56BVIN is shown in pictures



VARIANTS

PZHLV56BVIN *Stainless steel spoon with handcrafted blonde brown natural horn handle*

PZHLV56NIN *Stainless steel spoon with handcrafted black natural horn handle*

natural horn tips colour charts at page 103

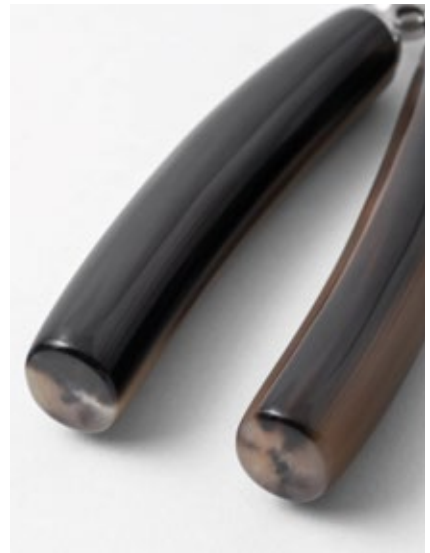
NUTCRACKER

Description Stainless steel nutcracker with handcrafted natural horn handles

Item size 180 x 50 x 15 mm

Item weight 150 g

PZHLV57BVIN is shown in pictures



VARIANTS

PZHLV57BVIN *Stainless steel nutcracker with handcrafted blonde brown natural horn handles*

PZHLV57NIN *Stainless steel nutcracker with handcrafted black natural horn handle*

natural horn tips colour charts at page 103

TRUFFLE SLICER WITH SERRATED BLADE

Description Stainless steel truffle slicer with serrated blade and natural horn handle

Item size 250 x 80 x 25 mm

Item weight 200 g

PZHLV69BVIN is shown in pictures



VARIANTS

PZHLV69BVIN *Stainless steel slicer with handcrafted blonde brown natural horn handle*

PZHLV69NIN *Stainless steel slicer with handcrafted black natural horn handle*

natural horn tips colour charts at page 103

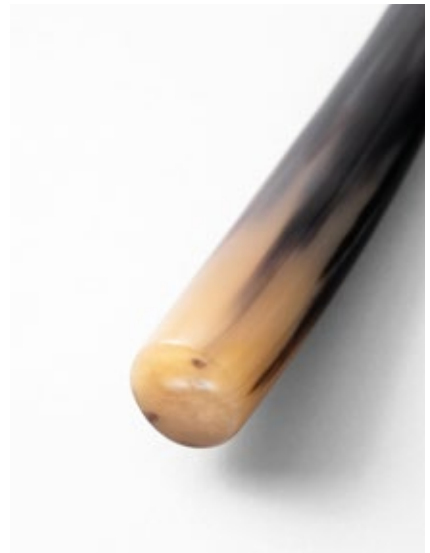
TRUFFLE SLICER WITH STRAIGHT BLADE

Description Stainless steel truffle slicer with straight blade and natural horn handle

Item size 250 x 80 x 25 mm

Item weight 200 g

PZHLV69BVIND is shown in pictures



VARIANTS

PZHLV69BVIND *Stainless steel slicer with handcrafted blonde brown natural horn handle*

PZHLV69NIND *Stainless steel slicer with handcrafted black natural horn handle*

natural horn tips colour charts at page 103

TABLE COMPLEMENTS >

Enjoy every moment of your life surrounded
by the elegance of natural horn



NATURAL HORN COASTERS SET | 6 PCS

Description Set of six natural horn coasters (Ø 90 mm) with nickel plated brass base

Box size 250 x 120 x 40 mm

Box weight 1,1 kg

PZHLV109BVNK is shown in pictures



VARIANTS

PZHLV109BBNK *Blonde white horn and nickel plated brass base*

PZHLV109BNNK *White black horn and nickel plated brass base*

PZHLV109BVNK *Blonde brown horn and nickel plated brass base*

natural horn plates colour charts at page 102

VERTICAL NAPKIN HOLDER

Description Natural horn vertical napkin holder with nickel plated brass base

Item size 120 x 60 x 60 mm

Item weight 350 g

PZHLV34BNNK is shown in pictures



VARIANTS

PZHLV34BBNK *Blonde white horn and nickel plated brass base*

PZHLV34BNNK *White black horn and nickel plated brass base*

PZHLV34BVNK *Blonde brown horn and nickel plated brass base*

natural horn plates colour charts at page 102



NAPKIN HOLDER SET | 6 PCS

Description Set of six handcrafted three layers napkin holder (Ø 65 mm) in natural horn

Box size 250 x 120 x 40 mm

Box weight 750 g

PZHLV111BN is shown in pictures



VARIANTS

PZHLV111BB *Three handcrafted layers of blonde white horn*

PZHLV111BN *Three handcrafted layers of white black horn*

PZHLV111BV *Three handcrafted layers of blonde brown horn*

natural horn plates colour charts at page 102

NATURAL HORN CUTLERY RESTS SET | 6 PCS

Description Set of six handcrafted three layers cutlery rests (90 mm) in natural horn

Box size 250 x 120 x 40 mm

Box weight 500 g

PZHLV112BB is shown in pictures



VARIANTS

PZHLV112BB *Three handcrafted layers of blonde white horn*

PZHLV112BN *Three handcrafted layers of white black horn*

PZHLV112BV *Three handcrafted layers of blonde brown horn*

natural horn plates colour charts at page 102

MEDIUM NATURAL HORN BOWL

Description Handcrafted natural horn bowl with nickel plated brass base

Item size 220 x 110 x 80 mm

Item weight 350 g

PZHLV14BVNK is shown in pictures



VARIANTS

PZHLV14BBNK *Blonde white horn and nickel plated brass base*

PZHLV14BNNK *White black horn and nickel plated brass base*

PZHLV14BVNK *Blonde brown horn and nickel plated brass base*

natural horn plates colour charts at page 102

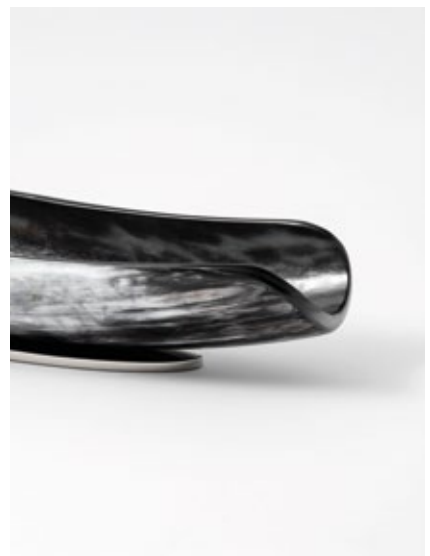
BIG NATURAL HORN BOWL

Description Handcrafted natural horn bowl with nickel plated brass base

Item size 300 x 110 x 80 mm

Item weight 500 g

PZHLV15BNNK is shown in pictures



VARIANTS

PZHLV15BBNK *Blonde white horn and nickel plated brass base*

PZHLV15BNNK *White black horn and nickel plated brass base*

PZHLV15BVNK *Blonde brown horn and nickel plated brass base*

natural horn plates colour charts at page 102

TALL NATURAL HORN BOWL

Description Handcrafted natural horn bowl with nickel plated brass base

Item size 300 x 120 x 100 mm

Item weight 700 g

PZHLV16BVNK is shown in pictures



VARIANTS

PZHLV16BBNK *Blonde white horn and nickel plated brass base*

PZHLV16BNNK *White black horn and nickel plated brass base*

PZHLV16BVNK *Blonde brown horn and nickel plated brass base*

natural horn plates colour charts at page 102



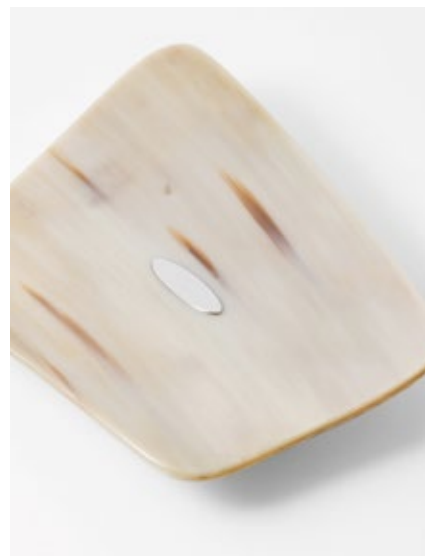
NATURAL HORN TRAY

Description Handcrafted natural horn tray with nickel plated brass base

Item size 230 x 180 x 50 mm

Item weight 500 g

PZHLV12BVNK is shown in pictures



VARIANTS

PZHLV12BBNK *Blonde white horn and nickel plated brass base*

PZHLV12BNNK *White black horn and nickel plated brass base*

PZHLV12BVNK *Blonde brown horn and nickel plated brass base*

natural horn plates colour charts at page 102

OIL & VINEGAR SET

Description Natural horn oil and vinegar set with two blown glass ampoules, horn stoppers and brass applications in different finishes

Item size 132 x 74 x 180 mm

Item weight 850 g

PZHLV67BVOS is shown in pictures



VARIANTS

PZHLV67BVNK *Blonde brown horn, two blown glass ampoules and nickel plated brass base*

PZHLV67BVOS *Blonde brown horn, two blown glass ampoules and satin brass base*

SPICES SERVER

Description Natural horn spices server with six blown glass ampoules, horn stoppers and brass applications in different finishes

Item size 132 x 74 x 180 mm

Item weight 850 g

PZHLV68BVNK is shown in pictures



VARIANTS

PZHLV68BVNK *Blonde brown horn, six blown glass ampoules and nickel plated brass base*

PZHLV68BVOS *Blonde brown horn, six blown glass ampoules and satin brass base*

SAUCE ROUND SERVER

Description Natural horn sauce server with two blown glass bowls, two natural horn sauce spoons and brass applications

Item size 132 x 74 x 40 mm

Item weight 600 g

PZHLV58BVOS is shown in pictures



VARIANTS

PZHLV58BVNK *Blonde brown horn, two blown glass bowls and nickel plated brass applications*

PZHLV58BVOS *Blonde brown horn, two blown glass bowls and satin brass applications*

OIL & SALT SET

Description Natural horn oil & salt set with two blown glass ampoules, one salt spoon and brass applications

Item size 132 x 74 x 70 mm

Item weight 650 g

PZHLV66BVNK is shown in pictures



VARIANTS

PZHLV66BVNK *Blonde brown horn, two ampoules and nickel plated brass applications*

PZHLV66BVOS *Blonde brown horn, two ampoules and satin brass applications*

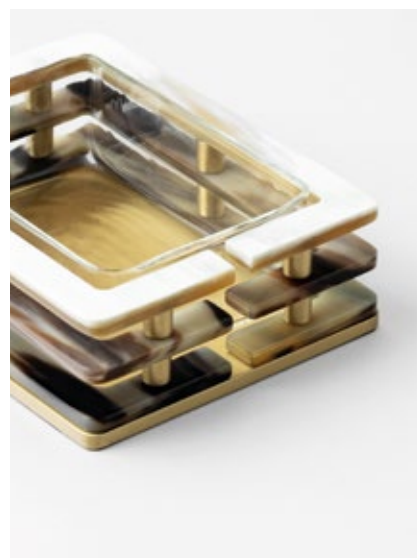
SNACK SERVER

Description Natural horn snack server with handcrafted glass tray and brass applications

Item size 132 x 104 x 40 mm

Item weight 750 g

PZHLV59BVOS is shown in pictures



VARIANTS

PZHLV59BVNK *Blonde brown horn, handcrafted glass tray and nickel plated brass applications*

PZHLV59BVOS *Blonde brown horn, handcrafted glass tray and satin brass applications*

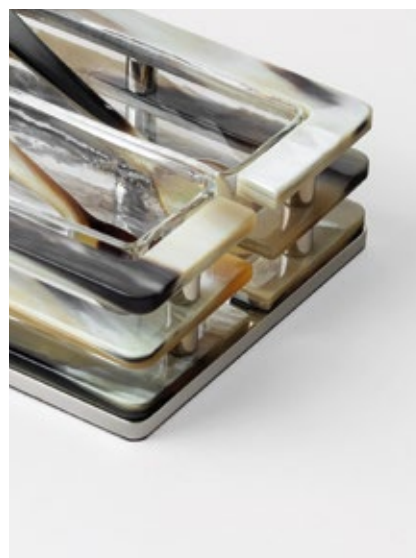
SAUCE SERVER

Description Natural horn sauce server with two handcrafted glass trays, two natural horn sauce spoons and brass applications

Item size 132 x 104 x 40 mm

Item weight 800 g

PZHLV60BVNK is shown in pictures



VARIANTS

PZHLV60BVNK *Blonde brown horn, handcrafted glass trays and nickel plated brass applications*

PZHLV60BVOS *Blonde brown horn, handcrafted glass trays and satin brass applications*



VERTICAL BREAD STICKS HOLDER

Description Handcrafted natural horn bread sticks holder with a circular brass base

Item size Ø 100 mm - H. 150 mm

Item weight 500 g

PZHLV06BBNK is shown in pictures



VARIANTS

PZHLV06BBNK *Blonde white horn and nickel plated brass base*

PZHLV06BNNK *White black horn and nickel plated brass base*

PZHLV06BVNK *Blonde brown horn and nickel plated brass base*

PZHLV06BBOR *Blonde white horn and gold plated brass base*

PZHLV06BVOR *Blonde brown horn and gold plated brass base*

natural horn plates colour charts at page 102

VERTICAL NAPKIN HOLDER

Description Handcrafted natural horn napkin holder with a circular polished brass base

Item size Ø 70 mm - H. 110 mm

Item weight 300 g

PZHLV05BNNK is shown in pictures



VARIANTS

PZHLV05BBNK *Blonde white horn and nickel plated brass base*

PZHLV05BNNK *White black horn and nickel plated brass base*

PZHLV05BVNK *Blonde brown horn and nickel plated brass base*

PZHLV05BBOR *Blonde white horn and gold plated brass base*

PZHLV05BVOR *Blonde brown horn and gold plated brass base*

natural horn plates colour charts at page 102

NATURAL HORN VASE

Description Handcrafted natural horn vase with circular brass base

Item size Ø 100 mm - H. 350 mm

Item weight 800 g

PZHLV26BVOR is shown in pictures



VARIANTS

PZHLV26BBNK *Blonde white horn and nickel plated brass base*

PZHLV26BNNK *White black horn and nickel plated brass base*

PZHLV26BVNK *Blonde brown horn and nickel plated brass base*

PZHLV26BBOR *Blonde white horn and gold plated brass base*

PZHLV26BVOR *Blonde brown horn and gold plated brass base*

natural horn plates colour charts at page 102



SHARING >

Our mastery at the service of your ideas

THE IMPORTANCE OF SHARING

In this catalogue we are presenting our collection of natural horn objects but, thanks to our experience, we are also able to give life to your ideas.

Sharing is an important path in the creation of our products. The birth of every article in our collection comes from the sharing of ideas, emotions and dreams. This is the great advantage of being a family business, have the possibility to share everything deeply.

So, if you are fascinated or inspired by this beautiful natural material, do not hesitate to share with us your idea. We will be very pleased to involve you and share with you our creation process, our values and our passions.

Always remembering that horn is a natural material and by its nature has limited applications, for this must be respected and worked with care.



PACKAGING >

The perfect dress

ATTENTION > All our products are sold with packaging represented in photos below except for Art&Design collection which, due to its dimensions, is sold with a suitable protective package.



Quality, elegance and craftsmanship are values which drive us in the creation of every Zanchi 1952 piece, values which are also reflected in the choice of packaging.

The attention to detail and the continuous research for the best quality combined with many years of experience has allowed us to select the best partners who could create the perfect dress for our creations.



Our packaging is carefully handmade by Italian artisans with whom we share values and passion. The boxes are sturdy and entirely hand-coated, the pressed logo represents our signature, sculpted but never invasive. The satin-coated interior gently envelops every object, while the perfect shaping of the article protects it from shocks. In a few words: the perfect dress.



NATURAL HORN >

Colour charts

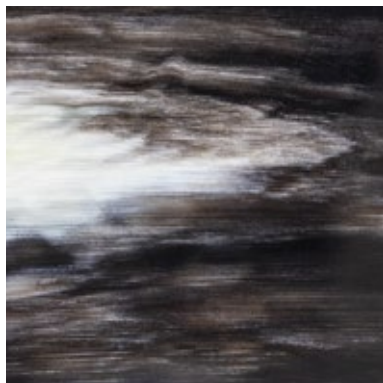
ATTENTION ➤ Since horn is a natural material each product may have shades and tones slightly different from those proposed in figures. This means that the product you ordered will have shades and colour tones slightly different from those represented by the photos in this catalogue, while always maintaining the dominant colour indicated in the description. This characteristic is what makes our products unique, each Zanchi 1952 item has its own shades and tones, that make it a real one of a kind.

NATURAL HORN PLATE COLOURS



BLONDE white

The blonde white colour is mainly characterized by shades of white and yellow, the mix of this colour could form shades of different intensities. Depending on processing of horn the product could present more white or warm tones.



WHITE black

White black is the most rare natural horn colour. Thanks to its intense and particular shades that match tones of white, gray, black and sometimes stripes of yellow and green can create amazing and astonishing effects, able to capture the most careful look.



BLONDE brown

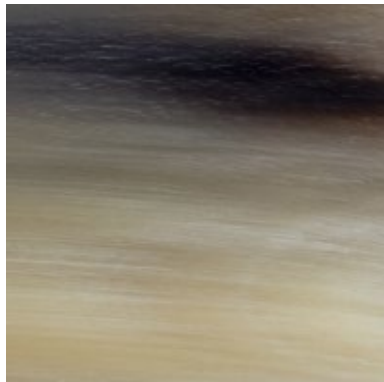
The blonde brown is the colour which can give the best representation of "nature" colours. It is characterized by shades of beige and light brown interrupted by beautiful stripes of brown and dark brown.

NATURAL HORN TIP COLOURS



The black colour of natural horn tips is characterized by deep black tones that sometimes may be interrupted by very light stripes of white. Thanks to its polished finish you can admire the beautiful deep pure black natural horn.

BLACK



The blonde brown is the colour which can give the best representation of "nature" colours. It is characterized by shades of beige and light brown interrupted by beautiful stripes of brown and dark brown.

BLONDE brown

Zanchi

1952

Zanchi Giovanni di Zanchi Maurizio & C. snc

Registered Office Via Giuseppina, 60 Bozzolo (MN) 46012 IT

Headquarter Viale Calabria, 3 Bozzolo (MN) 46012 IT

VAT 01994620209

0039 0376 91225

info@zanchi1952.com

www.zanchi1952.com

Zanchi
1952

www.zanchi1952.com