

Zanchi

1952

Luxury handles in natural horn

HANDLES CATALOGUE 2022

Zanchi

1952

Luxury handles in natural horn

HANDLES CATALOGUE 2022

“The uniqueness of the horn
is not only given by its refined
aesthetics, but also by the
extraordinary mastery needed
to work it and shape it.”

< Giovanni Zanchi >

CONTENT

Zanchi 1952 >	5
Mission&Vision >	7
Horn Plate Handles >	9
Horn Tip Handles >	41
Bone Handles >	59
Sharing >	68
Colour Charts >	70
Information&contacts >	76



WHAT&WHY > passion and tradition

Since 1952 Zanchi has been creating luxurious accessories and objects in natural horn, trying to enhancing all its shapes and shades.

Years of experiments and attempts have led Zanchi to understand all the deepest secrets of this material and the craftsmanship techniques, which have been handed down for three generations, reach today a unique level of material knowledge and attention to detail.

WHO&WHEN > a long story

Tradition, passion and innovation are the values that give life to Zanchi 1952, values closely linked to the story of a man, Giovanni Zanchi, who since adolescence has specialized in manipulate a natural, fascinating and complex material like horn. Giovanni took on the challenge of modeling an apparently indomitable material, with the aim of unleashing the extraordinary qualities that only the horn can have.

HOW&WHERE > quality warranty

This product is handcrafted in Italy using natural horn. Before reaching your hands, horn is skillfully selected and worked with passion by our craftsmen to let you admire the precious characteristics of this material. Natural horn is a material with unique and natural qualities that can lead to fine variations in shades and texture over the time. This feature is a guarantee of quality of our products and should not be attributed to a selection or manufacturing defects.



OUR MISSION > we do

Zanchi 1952 mission, today as in 1952, is to maintain the tradition of true made in Italy, offering a product of the highest quality, realized with the experience accumulated in the past and eye to the future.

OUR VISION > we dream

Zanchi 1952 vision is to spread love and passion for craftsmanship, with the hopes of returning to appreciate the work and values behind every creations and put the man and his wisdom at the center of attention.



NATURAL HORN PLATE HANDLES

ZH003

Description Handle with handcrafted natural horn application and brass support made by Computer Numerical Control (CNC)

Materials Natural horn | Brass

Size 150 x 75 x 25 mm

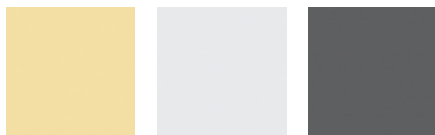
Weight 140 g

Thread 4MA

Spacers 2 x Ø 10 mm | H. 18 mm

Centre-to-centre Distance 121 mm

ZH003 in photos with blonde brown horn and polished nickel brass finish

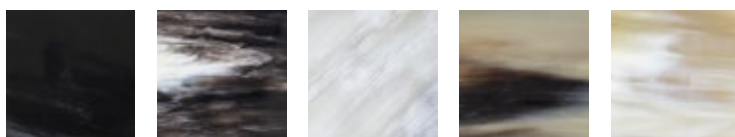


Polished
Gold

Polished
Nickel

Matt
Gunmetal

BRASS FINISHES



Black

White
Black

White

Blonde
Brown

Blonde
White

NATURAL HORN PLATE COLOURS

Since horn is a natural material the shades represented here are only indicative. Every colours in this chart may have variations in shades and colours range.

ZH007

Description Handle with handcrafted natural horn application and brass support made by Computer Numerical Control (CNC)

Materials Natural horn | Brass

Size 150 x 75 x 25 mm

Weight 180 g

Thread 4MA

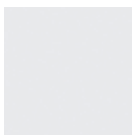
Spacers 2 x Ø 10 mm | H. 18 mm

Centre-to-centre Distance 116 mm

ZH007 in photos with white black horn and matt gunmetal brass finish



Polished
Gold

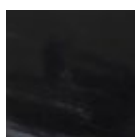


Polished
Nickel

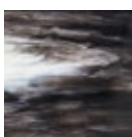


Matt
Gunmetal

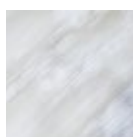
BRASS FINISHES



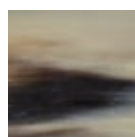
Black



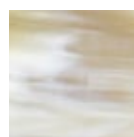
White
Black



White



Blonde
Brown



Blonde
White

NATURAL HORN PLATE COLOURS

Since horn is a natural material the shades represented here are only indicative. Every colours in this chart may have variations in shades and colours range.

ZH014

Description Handle with handcrafted natural horn application and brass support made by Computer Numerical Control (CNC)

Materials Natural horn | Brass

Size 80 x 80 x 20 mm

Weight 140 g

Thread 4MA

Spacers 2 x Ø 8 mm | H. 13 mm

Centre-to-centre Distance 56 mm

ZH014 in photos with blonde brown horn and satin brass finish



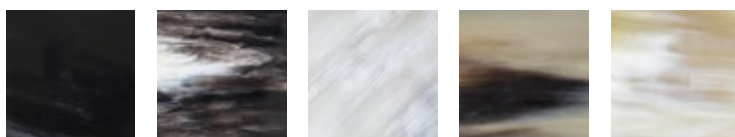
Polished
Gold

Polished
Nickel

Matt
Gunmetal

Satin
Brass

BRASS FINISHES



Black

White
Black

White

Blonde
Brown

Blonde
White

NATURAL HORN PLATE COLOURS

Since horn is a natural material the shades represented here are only indicative. Every colours in this chart may have variations in shades and colours range.

ZH016

Description Handle with handcrafted natural horn application and brass support made by Computer Numerical Control (CNC)

Materials Natural horn | Brass

Size 80 x 40 x 20 mm

Weight 90 g

Thread 4MA

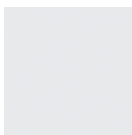
Spacers 2 x Ø 8 mm | H. 13 mm

Centre-to-centre Distance 56 mm

ZH016 in photos with white black horn and matt gunmetal brass finish



Polished
Gold

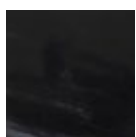


Polished
Nickel

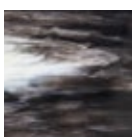


Matt
Gunmetal

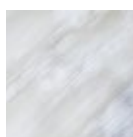
BRASS FINISHES



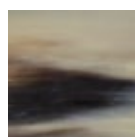
Black



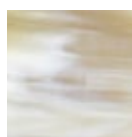
White
Black



White



Blonde
Brown



Blonde
White

NATURAL HORN PLATE COLOURS

Since horn is a natural material the shades represented here are only indicative. Every colours in this chart may have variations in shades and colours range.

ZH032

Description Handle with handcrafted natural horn application and brass support made by Computer Numerical Control (CNC)

Materials Natural horn | Brass

Size 110 x 60 x 20 mm

Weight 110 g

Thread 4MA

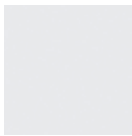
Spacers 2 x Ø 8 mm | H. 13 mm

Centre-to-centre Distance 97 mm

ZH032 in photos with blonde brown horn and polished gold brass finish



Polished
Gold

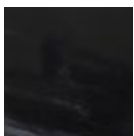


Polished
Nickel

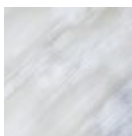


Matt
Gunmetal

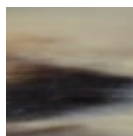
BRASS FINISHES



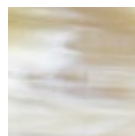
Black



White



Blonde
Brown



Blonde
White

NATURAL HORN PLATE COLOURS

Since horn is a natural material the shades represented here are only indicative. Every colours in this chart may have variations in shades and colours range.

ZH033

Description Handle with handcrafted natural horn application and brass support made by Computer Numerical Control (CNC)

Materials Natural horn | Brass

Size 55 x 60 x 20 mm

Weight 60 g

Thread 4MA

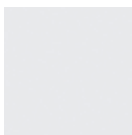
Spacers 2 x Ø 8 mm | H. 13 mm

Centre-to-centre Distance 47 mm

ZH033 in photos with blonde brown horn and polished gold brass finish



Polished
Gold

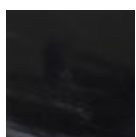


Polished
Nickel

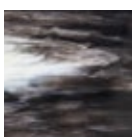


Matt
Gunmetal

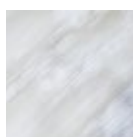
BRASS FINISHES



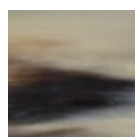
Black



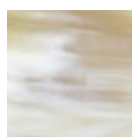
White
Black



White



Blonde
Brown



Blonde
White

NATURAL HORN PLATE COLOURS

Since horn is a natural material the shades represented here are only indicative. Every colours in this chart may have variations in shades and colours range.

ZH045

Description Handle with handcrafted natural horn application and brass support made by Computer Numerical Control (CNC)

Materials Natural horn | Brass

Size 110 x 60 x 21 mm

Weight 140 g

Thread 4MA

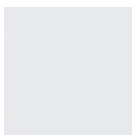
Spacers 2 x Ø 8 mm | H. 13 mm

Centre-to-centre Distance 92 mm

ZH045 in photos with blonde brown horn and polished nickel brass finish



Polished
Gold

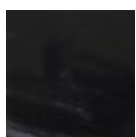


Polished
Nickel

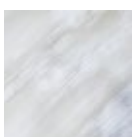


Matt
Gunmetal

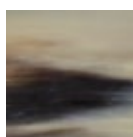
BRASS FINISHES



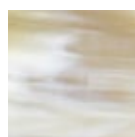
Black



White



Blonde
Brown



Blonde
White

NATURAL HORN PLATE COLOURS

Since horn is a natural material the shades represented here are only indicative. Every colours in this chart may have variations in shades and colours range.

ZH037

Description Handle with handcrafted natural horn application and brass support made by Computer Numerical Control (CNC)

Materials Natural horn | Brass

Size Ø 60 mm | H. 20 mm

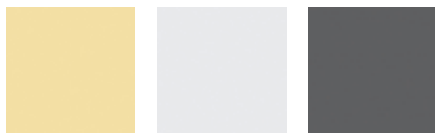
Weight 60 g

Thread 4MA

Spacers 2 x Ø 8 mm | H. 13 mm

Centre-to-centre Distance 47,5 mm

ZH037 in photos with white black horn and polished nickel brass finish

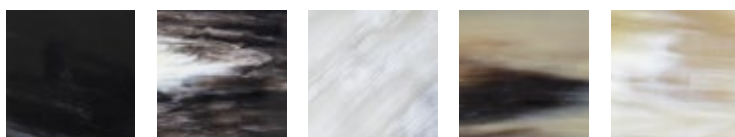


Polished
Gold

Polished
Nickel

Matt
Gunmetal

BRASS FINISHES



Black

White
Black

White

Blonde
Brown

Blonde
White

NATURAL HORN PLATE COLOURS

Since horn is a natural material the shades represented here are only indicative. Every colours in this chart may have variations in shades and colours range.

ZH103

Description Handle with handcrafted natural horn application and brass support made by Computer Numerical Control (CNC)

Materials Natural horn | Brass

Size Ø 90 | H. 20 mm

Weight 90 g

Thread 4MA

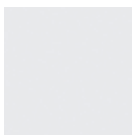
Spacers 2 x Ø 8 mm | H. 13 mm

Centre-to-centre Distance 79 mm

ZH103 in photos with white black horn and polished gold brass finish



Polished
Gold

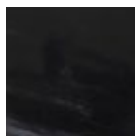


Polished
Nickel

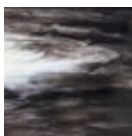


Matt
Gunmetal

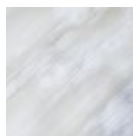
BRASS FINISHES



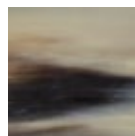
Black



White
Black



White



Blonde
Brown



Blonde
White

NATURAL HORN PLATE COLOURS

Since horn is a natural material the shades represented here are only indicative. Every colours in this chart may have variations in shades and colours range.

ZH100

Description Handle with handcrafted natural horn application and brass support made by Computer Numerical Control (CNC)

Materials Natural horn | Brass

Size Ø 60 mm | H. 20 mm

Weight 60 g

Thread 4MA

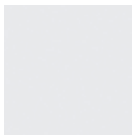
Spacers 2 x Ø 8 mm | H. 13 mm

Centre-to-centre Distance 16 mm

ZH100 in photos with white black horn and matt gunmetal brass finish



Polished
Gold

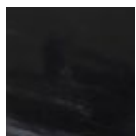


Polished
Nickel

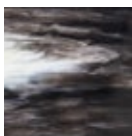


Matt
Gunmetal

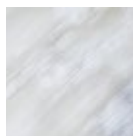
BRASS FINISHES



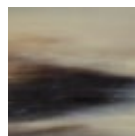
Black



White
Black



White



Blonde
Brown



Blonde
White

NATURAL HORN PLATE COLOURS

Since horn is a natural material the shades represented here are only indicative. Every colours in this chart may have variations in shades and colours range.

ZH099

Description Handle with handcrafted natural horn application and brass support made by Computer Numerical Control (CNC)

Materials Natural horn | Brass

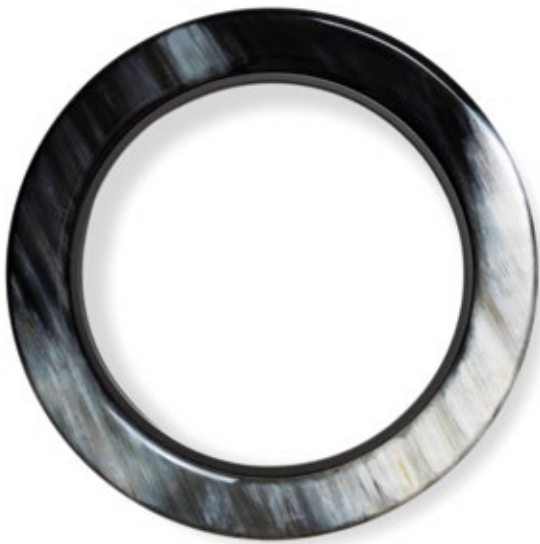
Size Ø 90 mm | H. 20 mm

Weight 90 g

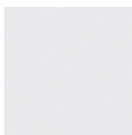
Thread 4MA

Spacers 3 x Ø 8 mm | H. 13 mm

ZH099 in photos with white black horn and matt gunmetal brass finish



Polished
Gold

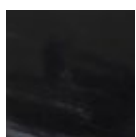


Polished
Nickel

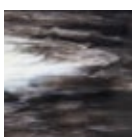


Matt
Gunmetal

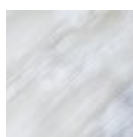
BRASS FINISHES



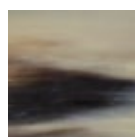
Black



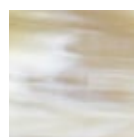
White
Black



White



Blonde
Brown



Blonde
White

NATURAL HORN PLATE COLOURS

Since horn is a natural material the shades represented here are only indicative. Every colours in this chart may have variations in shades and colours range.

ZH091

Description Handle with three handcrafted natural horn layers and brass spacers

Materials Natural horn | Brass

Size Ø 64 mm | H. 27 mm

Weight 50 g

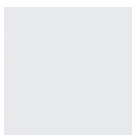
Thread 4MA

Spacers 3 x Ø 8 mm | H. 13 mm

ZH091 in photos with white black horn and polished nickel brass finish



Polished
Gold

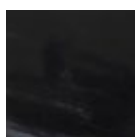


Polished
Nickel

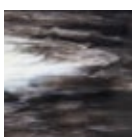


Matt
Gunmetal

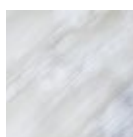
BRASS FINISHES



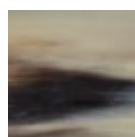
Black



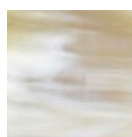
White
Black



White



Blonde
Brown



Blonde
White

NATURAL HORN PLATE COLOURS

Since horn is a natural material the shades represented here are only indicative. Every colours in this chart may have variations in shades and colours range.

ZH090

Description Handle with handcrafted milled natural horn application and brass support made by Computer Numerical Control (CNC)

Materials Natural horn | Brass

Size 88 x 56 x 20 mm

Weight 60 g

Thread 4MA

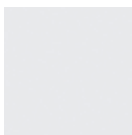
Spacers 2 x Ø 8 mm | H. 13 mm

Centre-to-centre Distance 68 mm

ZH090 in photos with blonde brown horn and polished gold brass finish



Polished
Gold

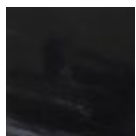


Polished
Nickel

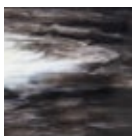


Matt
Gunmetal

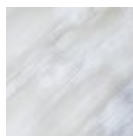
BRASS FINISHES



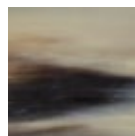
Black



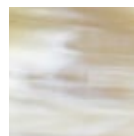
White
Black



White



Blonde
Brown



Blonde
White

NATURAL HORN PLATE COLOURS

Since horn is a natural material the shades represented here are only indicative. Every colours in this chart may have variations in shades and colours range.

ZH113

Description Handle with handcrafted natural horn application and brass support made by Computer Numerical Control (CNC)

Materials Natural horn | Brass

Size 88 x 56 x 20 mm

Weight 80 g

Thread 4MA

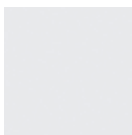
Spacers 2 x Ø 8 mm | H. 13 mm

Centre-to-centre Distance 68 mm

ZH113 in photos with blonde white horn and polished gold brass finish



Polished
Gold

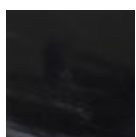


Polished
Nickel

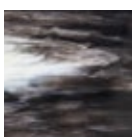


Matt
Gunmetal

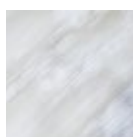
BRASS FINISHES



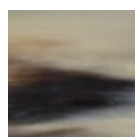
Black



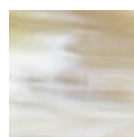
White
Black



White



Blonde
Brown



Blonde
White

NATURAL HORN PLATE COLOURS

Since horn is a natural material the shades represented here are only indicative. Every colours in this chart may have variations in shades and colours range.

ZH114

Description Handle with handcrafted natural horn application and brass support made by Computer Numerical Control (CNC)

Materials Natural horn | Brass

Size 88 x 56 x 20 mm

Weight 60 g

Thread 4MA

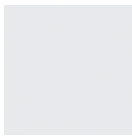
Spacers 2 x Ø 8 mm | H. 13 mm

Centre-to-centre Distance 68 mm

ZH114 in photos with white black horn and polished nickel brass finish



Polished
Gold

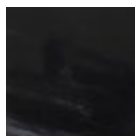


Polished
Nickel

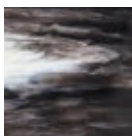


Matt
Gunmetal

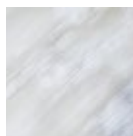
BRASS FINISHES



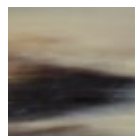
Black



White
Black



White



Blonde
Brown



Blonde
White

NATURAL HORN PLATE COLOURS

Since horn is a natural material the shades represented here are only indicative. Every colours in this chart may have variations in shades and colours range.

ZH054

Description Handle with handcrafted milled natural horn application. Brass support made by Computer Numerical Control (CNC)

Materials Natural horn | Brass

Size Ø 83 mm | H. 21 mm

Weight 75 g

Thread 4MA

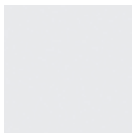
Spacers 2 x Ø 8 mm | H. 13 mm

Centre-to-centre Distance 64 mm

ZH054 in photos with blonde white horn and polished gold brass finish



Polished
Gold

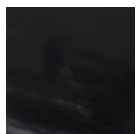


Polished
Nickel

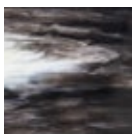


Matt
Gunmetal

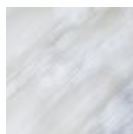
BRASS FINISHES



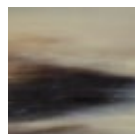
Black



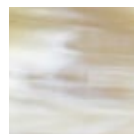
White
Black



White



Blonde
Brown



Blonde
White

NATURAL HORN PLATE COLOURS

Since horn is a natural material the shades represented here are only indicative. Every colours in this chart may have variations in shades and colours range.

ZH055

Description Handle with handcrafted natural horn application and brass support made by Computer Numerical Control (CNC)

Materials Natural horn | Brass

Size Ø 80 mm | H. 21 mm

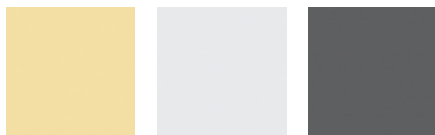
Weight 125 g

Thread 4MA

Spacers 2 x Ø 8 mm | H. 13 mm

Centre-to-centre Distance 60 mm

ZH055 in photos with blonde brown horn and polished nickel brass finish

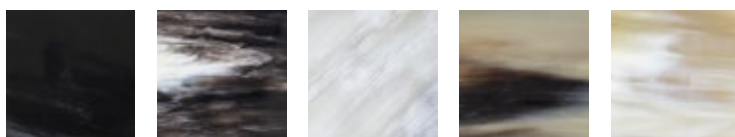


Polished
Gold

Polished
Nickel

Matt
Gunmetal

BRASS FINISHES



Black

White
Black

White

Blonde
Brown

Blonde
White

NATURAL HORN PLATE COLOURS

Since horn is a natural material the shades represented here are only indicative. Every colours in this chart may have variations in shades and colours range.

ZH055I

Description Handle with handcrafted and laser engraved natural horn application. Brass support made by Computer Numerical Control (CNC)

Materials Natural horn | Brass

Size Ø 80 mm | H. 21 mm

Weight 125 g

Thread 4MA

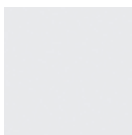
Spacers 2 x Ø 8 mm | H. 13 mm

Centre-to-centre Distance 60 mm

ZH055I in photos with blonde white horn and polished gold brass finish



Polished
Gold

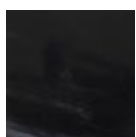


Polished
Nickel

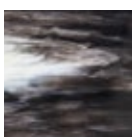


Matt
Gunmetal

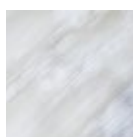
BRASS FINISHES



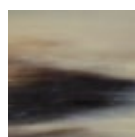
Black



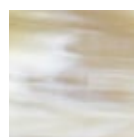
White
Black



White



Blonde
Brown



Blonde
White

NATURAL HORN PLATE COLOURS

Since horn is a natural material the shades represented here are only indicative. Every colours in this chart may have variations in shades and colours range.

ZH115

Description Handle with handcrafted natural horn application and brass support made by Computer Numerical Control (CNC)

Materials Natural horn | Brass

Size Ø 60 mm | H. 20 mm

Weight 80 g

Thread 4MA

Spacers 2 x Ø 8 mm | H. 13 mm

Centre-to-centre Distance 42 mm

ZH115 in photos with white black horn and satin brass finish



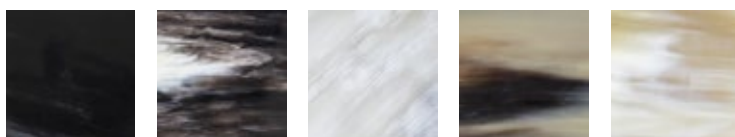
Polished
Gold

Polished
Nickel

Matt
Gunmetal

Satin
Brass

BRASS FINISHES



Black

White
Black

White

Blonde
Brown

Blonde
White

NATURAL HORN PLATE COLOURS

Since horn is a natural material the shades represented here are only indicative. Every colours in this chart may have variations in shades and colours range.

ZH116

Description Handle with handcrafted natural horn application and brass support made by Computer Numerical Control (CNC)

Materials Natural horn | Brass

Size Ø 105 mm | H. 25 mm

Weight 230 g

Thread 4MA

Spacers 2 x Ø 10 mm | H. 18 mm

Centre-to-centre Distance 85 mm

ZH116 in photos with blonde brown horn and satin brass finish



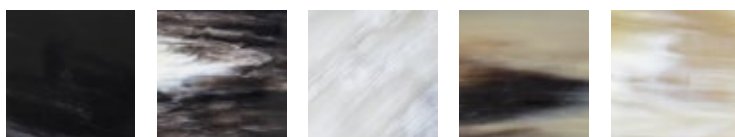
Polished
Gold

Polished
Nickel

Matt
Gunmetal

Satin
Brass

BRASS FINISHES



Black

White
Black

White

Blonde
Brown

Blonde
White

NATURAL HORN PLATE COLOURS

Since horn is a natural material the shades represented here are only indicative. Every colours in this chart may have variations in shades and colours range.

ZH087

Description Handle with handcrafted natural horn application and brass support made by Computer Numerical Control (CNC)

Materials Natural horn | Brass

Size 80 x 23 x 19 mm

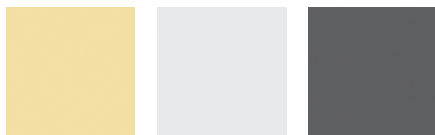
Weight 60 g

Thread 4MA

Spacers 2 x Ø 8 mm | H. 13 mm

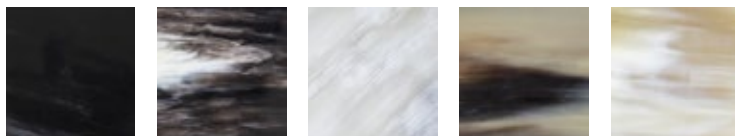
Centre-to-centre Distance 56 mm

ZH087 in photos with blonde brown horn and polished gold brass finish



BRASS FINISHES

Polished Gold Polished Nickel Matt Gunmetal



NATURAL HORN PLATE COLOURS

Black White Black White Blonde Brown Blonde White

Since horn is a natural material the shades represented here are only indicative. Every colours in this chart may have variations in shades and colours range.

ZH081

Description Handle with handcrafted natural horn application and brass support made by Computer Numerical Control (CNC)

Materials Natural horn | Brass

Size 112 x 39 x 20 mm

Weight 120 g

Thread 4MA

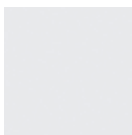
Spacers 2 x Ø 8 mm | H. 13 mm

Centre-to-centre Distance 84 mm

ZH081 in photos with white black horn and polished nickel brass finish



Polished
Gold

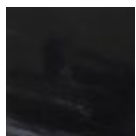


Polished
Nickel

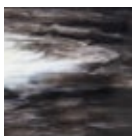


Matt
Gunmetal

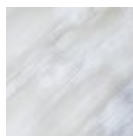
BRASS FINISHES



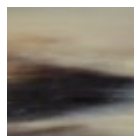
Black



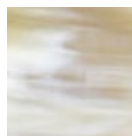
White
Black



White



Blonde
Brown



Blonde
White

NATURAL HORN PLATE COLOURS

Since horn is a natural material the shades represented here are only indicative. Every colours in this chart may have variations in shades and colours range.

ZH097

Description Handle with handcrafted natural horn application and brass support made by Computer Numerical Control (CNC)

Materials Natural horn | Brass

Size 151 x 39 x 23 mm

Weight 130 g

Thread 4MA

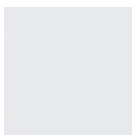
Spacers 2 x Ø 10 mm - H. 18 mm

Centre-to-centre Distance 121 mm

ZH097 in photos with blonde brown horn and polished nickel brass finish



Polished
Gold

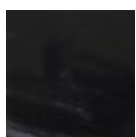


Polished
Nickel

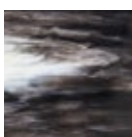


Matt
Gunmetal

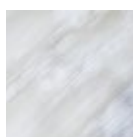
BRASS FINISHES



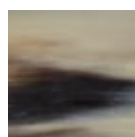
Black



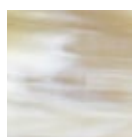
White
Black



White



Blonde
Brown



Blonde
White

NATURAL HORN PLATE COLOURS

Since horn is a natural material the shades represented here are only indicative. Every colours in this chart may have variations in shades and colours range.

ZH102

Description Handle with handcrafted natural horn application and brass support made by Computer Numerical Control (CNC)

Materials Natural horn | Brass

Size 300 x 40 x 24 mm

Weight 300 g

Thread 4MA

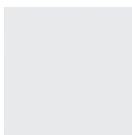
Spacers 2 x Ø 10 mm - H. 18 mm

Centre-to-centre Distance 208 mm

ZH102 in photos with white black horn and polished nickel brass finish



Polished
Gold

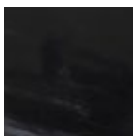


Polished
Nickel

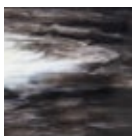


Matt
Gunmetal

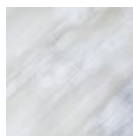
BRASS FINISHES



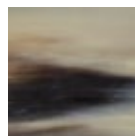
Black



White
Black



White



Blonde
Brown



Blonde
White

NATURAL HORN PLATE COLOURS

Since horn is a natural material the shades represented here are only indicative. Every colours in this chart may have variations in shades and colours range.

ZH083

Description Handle with handcrafted natural horn application and brass support made by Computer Numerical Control (CNC)

Materials Natural horn | Brass

Size 38 x 38 x 21 mm

Weight 40 g

Thread 4MA

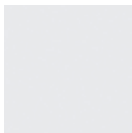
Spacers 2 x Ø 8 mm | H. 13 mm

Centre-to-centre Distance 21 mm

ZH083 in photos with blonde white horn and polished gold brass finish



Polished
Gold

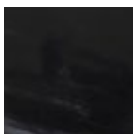


Polished
Nickel

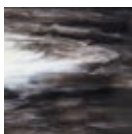


Matt
Gunmetal

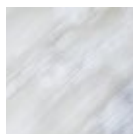
BRASS FINISHES



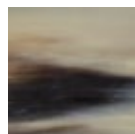
Black



White
Black



White



Blonde
Brown



Blonde
White

NATURAL HORN PLATE COLOURS

Since horn is a natural material the shades represented here are only indicative. Every colours in this chart may have variations in shades and colours range.

ZH084

Description Handle with handcrafted natural horn application and brass support made by Computer Numerical Control (CNC)

Materials Natural horn | Brass

Size 38 x 38 x 22 mm

Weight 40 g

Thread 4MA

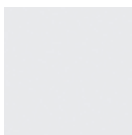
Spacers 2 x Ø 8 mm | H. 13 mm

Centre-to-centre Distance 21 mm

ZH084 in photos with blonde brown horn and polished gold brass finish



Polished
Gold

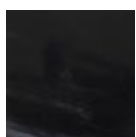


Polished
Nickel

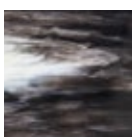


Matt
Gunmetal

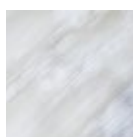
BRASS FINISHES



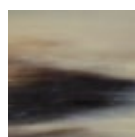
Black



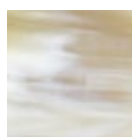
White
Black



White



Blonde
Brown



Blonde
White

NATURAL HORN PLATE COLOURS

Since horn is a natural material the shades represented here are only indicative. Every colours in this chart may have variations in shades and colours range.

ZH085

Description Handle with handcrafted natural horn application and brass support made by Computer Numerical Control (CNC)

Materials Natural horn | Brass

Size 81 x 32 x 23 mm

Weight 60 g

Thread 4MA

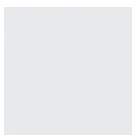
Spacers 2 x Ø 8 mm | H. 13 mm

Centre-to-centre Distance 57 mm

ZH085 in photos with black horn and polished nickel brass finish



Polished
Gold

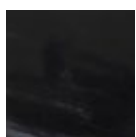


Polished
Nickel

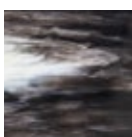


Matt
Gunmetal

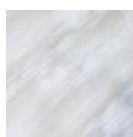
BRASS FINISHES



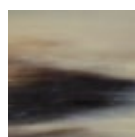
Black



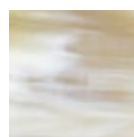
White
Black



White



Blonde
Brown



Blonde
White

NATURAL HORN PLATE COLOURS

Since horn is a natural material the shades represented here are only indicative. Every colours in this chart may have variations in shades and colours range.

ZH086

Description Handle with handcrafted natural horn application and brass support made by Computer Numerical Control (CNC)

Materials Natural horn | Brass

Size 81 x 32 x 22 mm

Weight 60 g

Thread 4MA

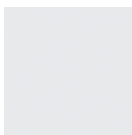
Spacers 2 x Ø 8 mm | H. 13 mm

Centre-to-centre Distance 57 mm

ZH086 in photos with blonde brown horn and polished gold brass finish



Polished
Gold

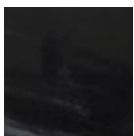


Polished
Nickel

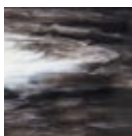


Matt
Gunmetal

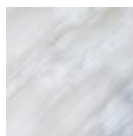
BRASS FINISHES



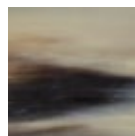
Black



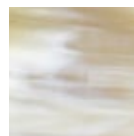
White
Black



White



Blonde
Brown



Blonde
White

NATURAL HORN PLATE COLOURS

Since horn is a natural material the shades represented here are only indicative. Every colours in this chart may have variations in shades and colours range.

ZH106

Description Handle with handcrafted natural horn application and brass support made by Computer Numerical Control (CNC)

Materials Natural horn | Brass

Size 120 x 12 x 21 mm

Weight 50 g

Thread 4MA

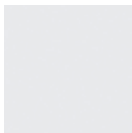
Spacers 2 x Ø 8 mm | H. 13 mm

Centre-to-centre Distance 90 mm

ZH106 in photos with blonde brown horn and polished nickel brass finish



Polished
Gold

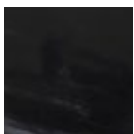


Polished
Nickel

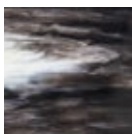


Matt
Gunmetal

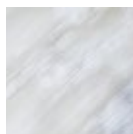
BRASS FINISHES



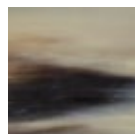
Black



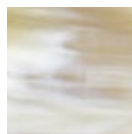
White
Black



White



Blonde
Brown



Blonde
White

NATURAL HORN PLATE COLOURS

Since horn is a natural material the shades represented here are only indicative. Every colours in this chart may have variations in shades and colours range.

ZH108

Description Handle with three handcrafted natural horn layers and brass spacers

Materials Natural horn | Brass

Size 112 x 15 x 28 mm

Weight 40 g

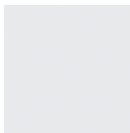
Thread 4MA

Spacers 2 x Ø 8 mm | H. 13 mm

ZH108 in photos with blonde brown horn and polished gold brass finish



Polished Gold

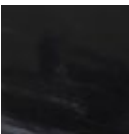


Polished Nickel

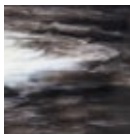


Matt Gunmetal

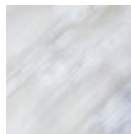
BRASS FINISHES



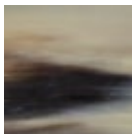
Black



White Black



White



Blonde Brown



Blonde White

NATURAL HORN PLATE COLOURS

Since horn is a natural material the shades represented here are only indicative. Every colours in this chart may have variations in shades and colours range.

NATURAL HORN TIP HANDLES

ZH071

Description Handcrafted knob in natural horn with brass threaded insert

Materials Natural horn | Brass

Size 50 x 25 x 27 mm

Weight 20 g

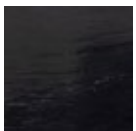
Thread 4MA

Spacers 2 | 10 x 10 x 14 mm

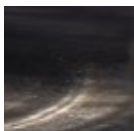
ZH071 in photos in dark brown horn colour



NATURAL HORN TIP COLOURS



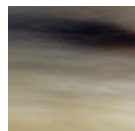
Black



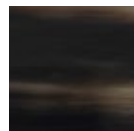
Spotted
Black



Blonde



Blonde
Brown



Dark
Brown

Since horn is a natural material the shades represented here are only indicative. Every colours in this chart may have variations in shades and colours range.

ZH077

Description Handcrafted knob in natural horn with brass threaded insert

Materials Natural horn | Brass

Size Ø 21 mm | H.20 mm

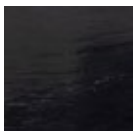
Weight 10 g

Thread 4MA

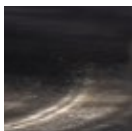
ZH077 in photos with blonde brown horn colour



NATURAL HORN TIP COLOURS



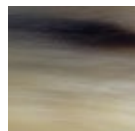
Black



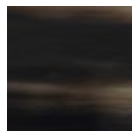
Spotted
Black



Blonde



Blonde
Brown



Dark
Brown

Since horn is a natural material the shades represented here are only indicative. Every colours in this chart may have variations in shades and colours range.

ZH078

Description Handcrafted knob in natural horn with brass threaded insert

Materials Natural horn | Brass

Size Ø 22 mm | H.26 mm

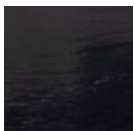
Weight 10 g

Thread 4MA

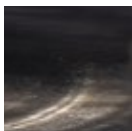
ZH078 in photos with blonde brown horn colour



NATURAL HORN TIP COLOURS



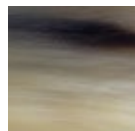
Black



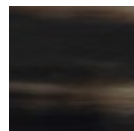
Spotted
Black



Blonde



Blonde
Brown



Dark
Brown

Since horn is a natural material the shades represented here are only indicative. Every colours in this chart may have variations in shades and colours range.

ZH089

Description Handcrafted knob in natural horn with brass threaded insert

Materials Natural horn | Brass

Size Ø 20 mm | H.30 mm

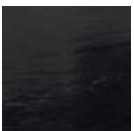
Weight 20 g

Thread 4MA

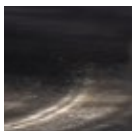
ZH089 in photos in spotted black horn colour



NATURAL HORN TIP COLOURS



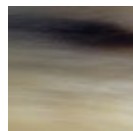
Black



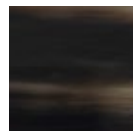
Spotted
Black



Blonde



Blonde
Brown



Dark
Brown

Since horn is a natural material the shades represented here are only indicative. Every colours in this chart may have variations in shades and colours range.

ZH094

Description Handcrafted knob in natural horn with brass threaded insert

Materials Natural horn | Brass

Size Ø 26 mm | H.34 mm

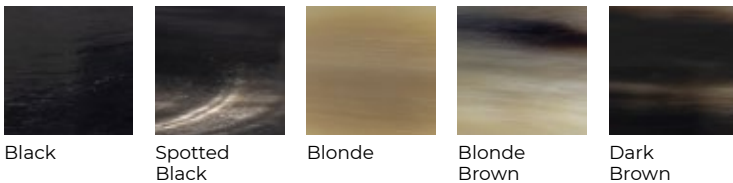
Weight 20 g

Thread 4MA

ZH094 in photos with blonde brown colour



NATURAL HORN TIP COLOURS



Since horn is a natural material the shades represented here are only indicative. Every colours in this chart may have variations in shades and colours range.

ZH101

Description Handcrafted knob in natural horn with brass threaded insert

Materials Natural horn | Brass

Size 25 x 25 x 27 mm

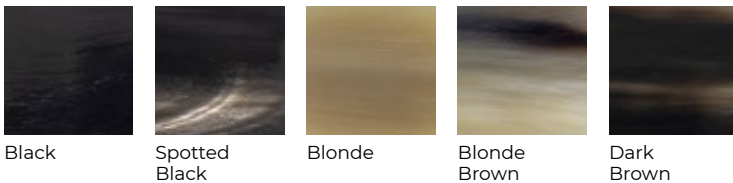
Weight 15 g

Thread 4MA

ZH101 in photos with black horn colour



NATURAL HORN TIP COLOURS



Since horn is a natural material the shades represented here are only indicative. Every colours in this chart may have variations in shades and colours range.

ZH105

Description Handcrafted knob in natural horn with brass threaded insert

Materials Natural horn | Brass

Size Ø 25 mm | H.27 mm

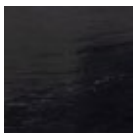
Weight 10 g

Thread 4MA

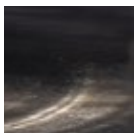
ZH105 in photos with blonde brown horn colour



NATURAL HORN TIP COLOURS



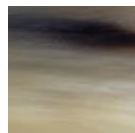
Black



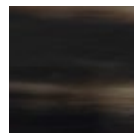
Spotted
Black



Blonde



Blonde
Brown



Dark
Brown

Since horn is a natural material the shades represented here are only indicative. Every colours in this chart may have variations in shades and colours range.

ZH079

Description Handcrafted natural horn handle with brass spacers

Materials Natural horn | Brass

Size 67 x 16 x 27 mm

Weight 25 g

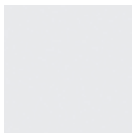
Thread 4MA

Spacers 2 x Ø 8 mm | H. 13 mm

ZH079 in photos with spotted black horn and polished nickel brass spacers



Polished
Gold

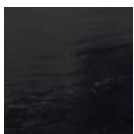


Polished
Nickel

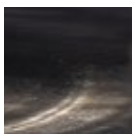


Matt
Gunmetal

BRASS FINISHES



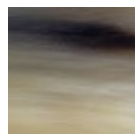
Black



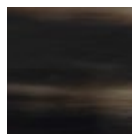
Spotted
Black



Blonde



Blonde
Brown



Dark
Brown

NATURAL HORN TIP COLOURS

Since horn is a natural material the shades represented here are only indicative. Every colours in this chart may have variations in shades and colours range.

ZH080

Description Handcrafted natural horn handle with brass spacers

Materials Natural horn | Brass

Size 67 x 16 x 27 mm

Weight 20 g

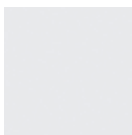
Thread 4MA

Spacers 2 x Ø 8 mm | H. 13 mm

ZH080 in photos with blonde brown horn and polished gold brass spacers



Polished
Gold

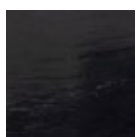


Polished
Nickel

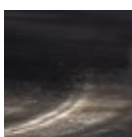


Matt
Gunmetal

BRASS FINISHES



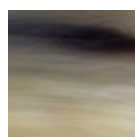
Black



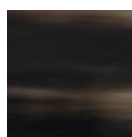
Spotted
Black



Blonde



Blonde
Brown



Dark
Brown

NATURAL HORN TIP COLOURS

Since horn is a natural material the shades represented here are only indicative. Every colours in this chart may have variations in shades and colours range.

ZH088

Description Handcrafted natural horn handle with brass spacers

Materials Natural horn | Brass

Size 65 x 30 x 31 mm

Weight 40 g

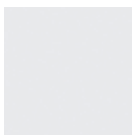
Thread 4MA

Spacers 2 x Ø 8 mm | H. 13 mm

ZH088 in photos with dark brown horn and polished gold brass spacers



Polished
Gold

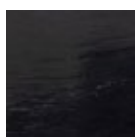


Polished
Nickel

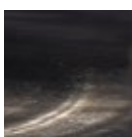


Matt
Gunmetal

BRASS FINISHES



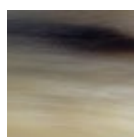
Black



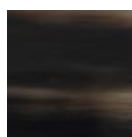
Spotted
Black



Blonde



Blonde
Brown



Dark
Brown

NATURAL HORN TIP COLOURS

Since horn is a natural material the shades represented here are only indicative. Every colours in this chart may have variations in shades and colours range.

ZH092

Description Cylindrical handle with handcrafted natural horn and brass supports made by fusion

Materials Natural horn | Brass

Size 150 x 26 x 41 mm

Weight 80 g

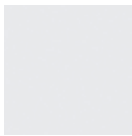
Thread 5MA

Spacers 35 x 26 x 41 mm

ZH092 in photos with blonde brown horn and polished gold brass finish



Polished
Gold

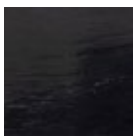


Polished
Nickel

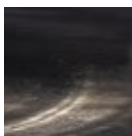


Satin
Brass

BRASS FINISHES



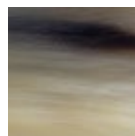
Black



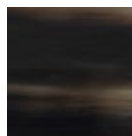
Spotted
Black



Blonde



Blonde
Brown



Dark
Brown

NATURAL HORN TIP COLOURS

Since horn is a natural material the shades represented here are only indicative. Every colours in this chart may have variations in shades and colours range.

ZH093

Description Cylindrical handle with handcrafted natural horn and brass supports made by fusion

Materials Natural horn | Brass

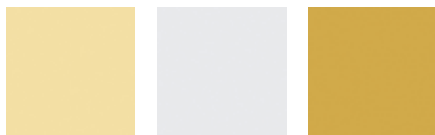
Size 100 x 26 x 41 mm

Weight 75 g

Thread 5MA

Spacers 35 x 26 x 41 mm

ZH093 in photos with blonde brown horn and polished nickel brass finish



Polished
Gold

Polished
Nickel

Satin
Brass

BRASS FINISHES



Black

Spotted
Black

Blonde

Blonde
Brown

Dark
Brown

NATURAL HORN TIP COLOURS

Since horn is a natural material the shades represented here are only indicative. Every colours in this chart may have variations in shades and colours range.

ZH095

Description Cylindrical handle with handcrafted natural horn and brass supports made by fusion

Materials Natural horn | Brass

Size 300 x 26 x 41 mm

Weight 200 g

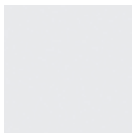
Thread 5MA

Spacers 35 x 26 x 41 mm

ZH095 in photos with spotted black horn and satin brass finish



Polished
Gold

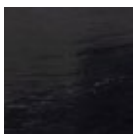


Polished
Nickel

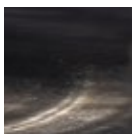


Satin
Brass

BRASS FINISHES



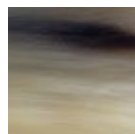
Black



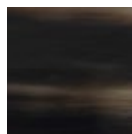
Spotted
Black



Blonde



Blonde
Brown



Dark
Brown

NATURAL HORN TIP COLOURS

Since horn is a natural material the shades represented here are only indicative. Every colours in this chart may have variations in shades and colours range.

ZH096

Description Cylindrical handle with handcrafted natural horn and brass supports made by fusion

Materials Natural horn | Brass

Size 200 x 26 x 41 mm

Weight 100 g

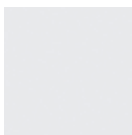
Thread 5MA

Spacers 35 x 26 x 41 mm

ZH096 in photos with spotted black horn and satin brass finish



Polished
Gold

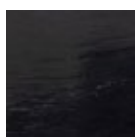


Polished
Nickel

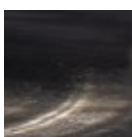


Satin
Brass

BRASS FINISHES



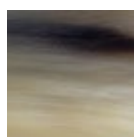
Black



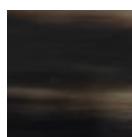
Spotted
Black



Blonde



Blonde
Brown



Dark
Brown

NATURAL HORN TIP COLOURS

Since horn is a natural material the shades represented here are only indicative. Every colours in this chart may have variations in shades and colours range.

ZH111

Description Handcrafted natural horn handle with brass spacers

Materials Natural horn | Brass

Size 111 x 11 x 30 mm

Weight 36 g

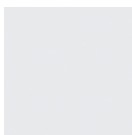
Thread 5MA

Spacers 2 x Ø 10 mm | H. 22 mm

ZH111 in photos with blonde brown horn and polished nickel brass finish



Polished
Gold

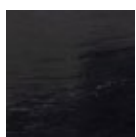


Polished
Nickel

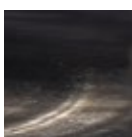


Matt
Gunmetal

BRASS FINISHES



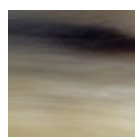
Black



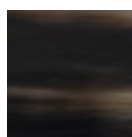
Spotted
Black



Blonde



Blonde
Brown



Dark
Brown

NATURAL HORN TIP COLOURS

Since horn is a natural material the shades represented here are only indicative. Every colours in this chart may have variations in shades and colours range.





BONE HANDLES

ZH087

Description Handle with handcrafted bone application and brass support made by Computer Numerical Control (CNC)

Materials Bone | Brass

Size 80 x 23 x 19 mm

Weight 60 g

Thread 4MA

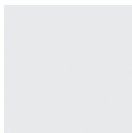
Spacers 2 x Ø 8 mm | H. 13 mm

Centre-to-centre Distance 56 mm

ZH087 with bone and polished nickel brass finish is shown in photos



Polished
Gold



Polished
Nickel



Matt
Gunmetal

BRASS FINISHES



Bone

BONE COLOUR

Since bone is a natural material the shades represented here are only indicative. Every colours in this chart may have variations in shades and colours range.

ZH104

Description Handle with handcrafted bone application and brass support made by Computer Numerical Control (CNC)

Materials Bone | Brass

Size 112 x 28 x 20 mm

Weight 100 g

Thread 4MA

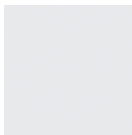
Spacers 2 x Ø 8 mm | H. 13 mm

Centre-to-centre Distance 84 mm

ZH104 with bone and polished nickel brass finish is shown in photos



Polished
Gold



Polished
Nickel



Matt
Gunmetal

BRASS FINISHES



Bone

BONE COLOUR

Since bone is a natural material the shades represented here are only indicative. Every colours in this chart may have variations in shades and colours range.

ZH081

Description Handle with handcrafted bone application and brass support made by Computer Numerical Control (CNC)

Materials Bone | Brass

Size 112 x 39 x 20 mm

Weight 120 g

Thread 4MA

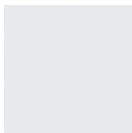
Spacers 2 x Ø 8 mm | H. 13 mm

Centre-to-centre Distance 84 mm

ZH081 with bone and polished nickel brass finish is shown in photos



Polished
Gold



Polished
Nickel



Matt
Gunmetal

BRASS FINISHES



Bone

BONE COLOUR

Since bone is a natural material the shades represented here are only indicative. Every colours in this chart may have variations in shades and colours range.

ZH107

Description Handle with handcrafted bone application and brass support made by Computer Numerical Control (CNC)

Materials Bone | Brass

Size 120 x 12 x 18 mm

Weight 50 g

Thread 4MA

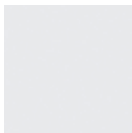
Spacers 2 x Ø 8 mm | H. 13 mm

Centre-to-centre Distance 90 mm

ZH003 with bone and polished gold brass finish is shown in photos



Polished
Gold



Polished
Nickel



Matt
Gunmetal

BRASS FINISHES



Bone

BONE COLOUR

Since bone is a natural material the shades represented here are only indicative. Every colours in this chart may have variations in shades and colours range.

ZH110

Description Handle with handcrafted bone application and brass support made by Computer Numerical Control (CNC)

Materials Bone | Brass

Size 38 x 38 x 19 mm

Weight 50 g

Thread 4MA

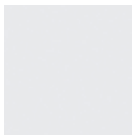
Spacers 2 x Ø 8 mm | H. 13 mm

Centre-to-centre Distance 21 mm

ZH110 with bone and polished gold brass finish is shown in photos



Polished
Gold



Polished
Nickel



Matt
Gunmetal

BRASS FINISHES



Bone

BONE COLOUR

Since bone is a natural material the shades represented here are only indicative. Every colours in this chart may have variations in shades and colours range.

ZH109

Description Rectangular handle with five handcrafted bone layers and brass spacers

Materials Bone | Brass

Size 112 x 15 x 28 mm

Weight 60 g

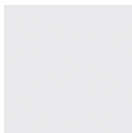
Thread 4MA

Spacers 2 x Ø 8 mm | H. 13 mm

ZH109 with bone and polished gold brass spacers is shown in photos



Polished
Gold



Polished
Nickel



Matt
Gunmetal

BRASS FINISHES



Bone

BONE COLOUR

Since bone is a natural material the shades represented here are only indicative. Every colours in this chart may have variations in shades and colours range.

ZH112

Description Cylindrical handle with four handcrafted bone layers and brass spacers

Materials Bone | Brass

Size 111 x 11 x 30 mm

Weight 46 g

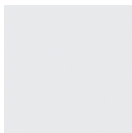
Thread 5MA

Spacers 2 x Ø 10 mm | H. 22 mm

ZH112 with bone and polished gold brass spacers is shown in photos



Polished
Gold



Polished
Nickel



Matt
Gunmetal

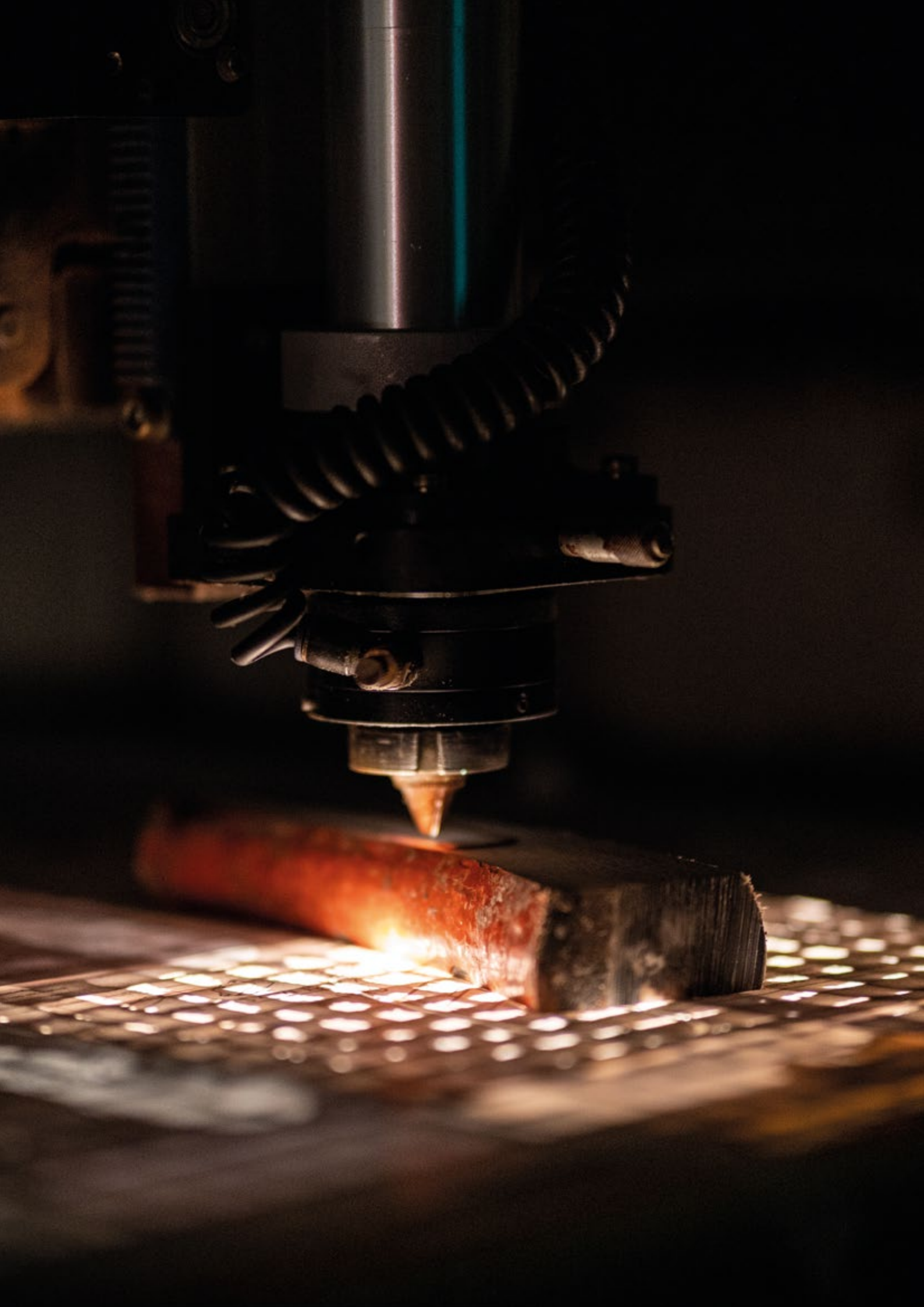
BRASS FINISHES



Bone

BONE COLOUR

Since bone is a natural material the shades represented here are only indicative. Every colours in this chart may have variations in shades and colours range.





SHARING >

Our mastery at the service of your ideas

THE IMPORTANCE OF SHARING

In this catalogue we are presenting our collection of natural horn objects but, thanks to our experience, we are also able to give life to your ideas.

Sharing is an important path in the creation of our products. The birth of every article in our collection comes from the sharing of ideas, emotions and dreams. This is the great advantage of being a family business, have the possibility to share everything deeply.

So, if you are fascinated or inspired by this beautiful natural material, do not hesitate to share with us your idea. We will be very pleased to involve you and share with you our creation process, our values and our passions.

Always remembering that horn is a natural material and by its nature has limited applications, for this must be respected and worked with care.

NATURAL HORN >
Colour charts & descriptions

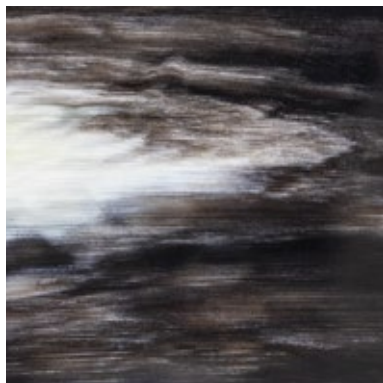
ATTENTION ➤ Since horn is a natural material each product may have shades and tones slightly different from those proposed in figures. This means that the product you ordered will have shades and colour tones slightly different from those represented by the photos in this catalogue, while always maintaining the dominant colour indicated in the description. This characteristic is what makes our products unique, each Zanchi 1952 items has its own shades and tones, that make it a real one of a kind.

NATURAL HORN PLATE COLOURS



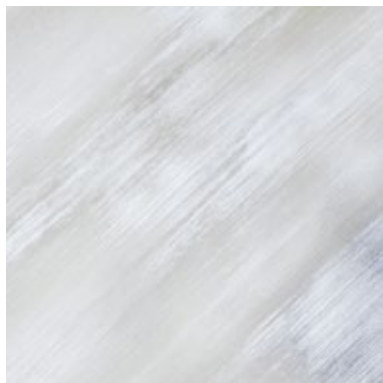
The black colour of natural horn plate is characterized by deep black tones that sometimes may be interrupted by very light stripes of gray. Thanks to its polished finish you can admire the beautiful deep pure black natural horn colour.

BLACK



White black is one of the rarest natural horn colour. Thanks to its intense and particular shades, that match tones of white, gray, black and sometimes stripes of yellow and green, can create amazing and astonishing effects, able to capture the most careful look.

WHITE black



The combination of light gray and white shapes create a unique and pure tone of white. The brightness of this colour is enhanced by the natural movement which only horn can display. An intense and accurate colour, but never motionless and emotionless.

WHITE

NATURAL HORN PLATE COLOURS



BLONDE white

The blonde white colour is mainly characterized by shades of white and yellow, the mix of this colours could form shades of different intensities. Depending on processing of horn the product could present more white or warm tones.



BLONDE brown

The blonde brown is the colour which can give the best representation of "nature" colours. It is characterized by shades of beige and light brown interrupted by beautiful stripes of brown and dark brown.

NATURAL HORN TIP COLOURS



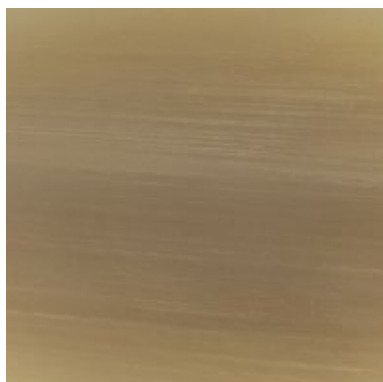
BLACK

The black colour of natural horn tips is characterized by deep black tones that sometimes may be interrupted by very light stripes of white. Thanks to its polished finish you can admire the beautiful deep pure black natural horn.



SPOTTED black

The spotted black colour is obviously similar to black but is characterized by the presence of beautiful white stripes that cross the all tip. Due to horn natural characteristic, every white stripe is different and this makes every handles one of a kind.



BLONDE

The blonde colour is mainly characterized by warm shades of beige and yellow, the mix of this colours could form shades of different intensities. Depending on processing of horn the product could present more yellow or beige tones.

NATURAL HORN TIP COLOURS



BLONDE brown

The blonde brown is the colour which can give the best representation of “nature” colours. It is characterized by shades of beige and light brown interrupted by beautiful stripes of brown and dark brown.



DARK brown

The dark brown colour is the right opposite of blonde brown. This colour is characterized by intense deep brown shades interrupted by light stripes of yellow, beige or light red.

Zanchi

1952

Zanchi Giovanni di Zanchi Maurizio & C. snc

Registered Office Via Giuseppina, 60 Bozzolo (MN) 46012 IT

Headquarter Viale Calabria, 3 Bozzolo (MN) 46012 IT

VAT 01994620209

0039 0376 91225

info@zanchi1952.com

www.zanchi1952.com

printed 14.04.2022

Zanchi
1952

www.zanchi1952.com