



LAPIS  **URBE** SRL
TRAVERTINO ROMANO

COMPANY PROFILE



EXTRACTION • PROCESSING • TRADING ROMAN TRAVERTINE

Lapis Urbe was born in year 2013 as an artisan company specialised in the extraction and processing of "Real Roman Travertine", coming only from the extraction areas of Tivoli and Guidonia, at Rome's doorstep in Italy.

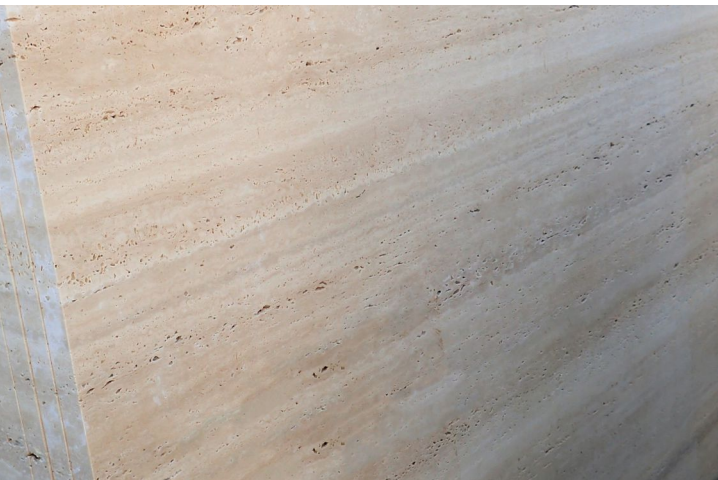
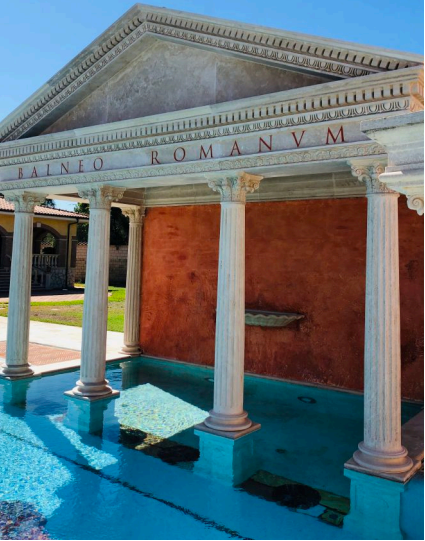
In 2015 Lapis Urbe thanks to the quality of its travertines and the projects developed in collaboration with renowned architectural firms, strengthens its presence on the national market while at the same time expanding the business on new international paths.

The expertise gained over the years, the entrepreneurial skills of the work team, and the cutting-edge technology used, make Lapis Urbe today able to effectively respond to the dynamism of the natural stone industry.

A handwritten signature in white ink, appearing to read 'M. Castaldi', is positioned above the name of the Chief Executive Officer.

Dott. Mario Castaldi
Chief Executive Officer

CLASSICO TRAVERTINE



CLASSICO TRAVERTINE





CLASSICO LIGHT TRAVERTINE



CLASSICO LIGHT TRAVERTINE



Palazzo della Civiltà Italiana - Rome - Italy
Year 1953 CE



Trevi Fountain - Rome - Italy
Year 1732 CE



CLASSICO ALABASTRINO TRAVERTINE





CLASSICO ALABASTRINO TRAVERTINE



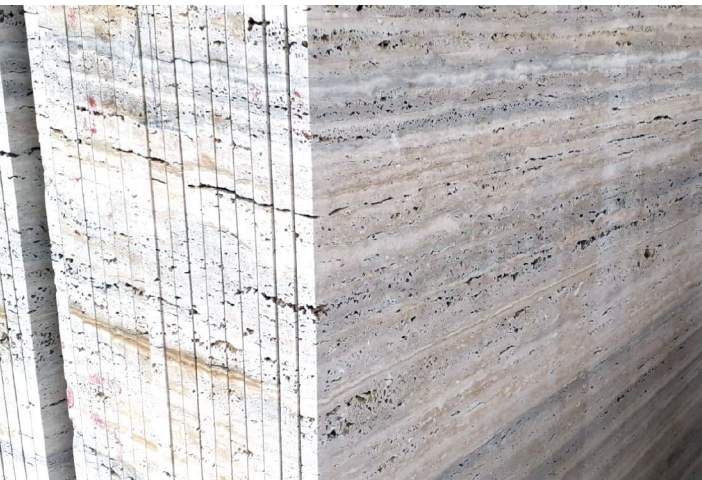
NAVONA TRAVERTINE





NAVONA TRAVERTINE

SILVER TRAVERTINE



SILVER TRAVERTINE



Pantheon - Rome - Italy
Year 125 BCE

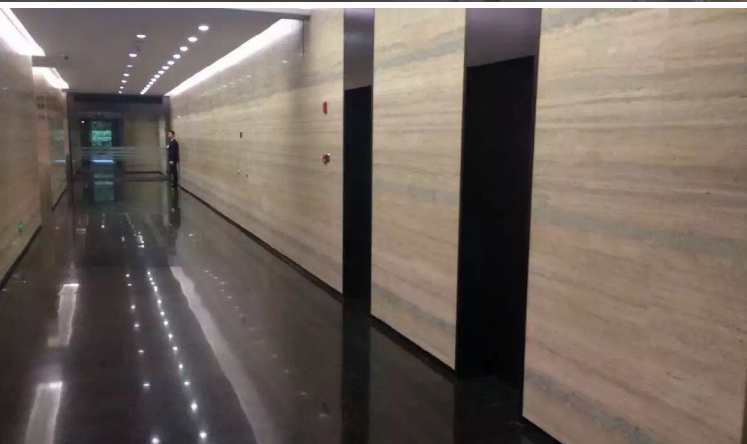


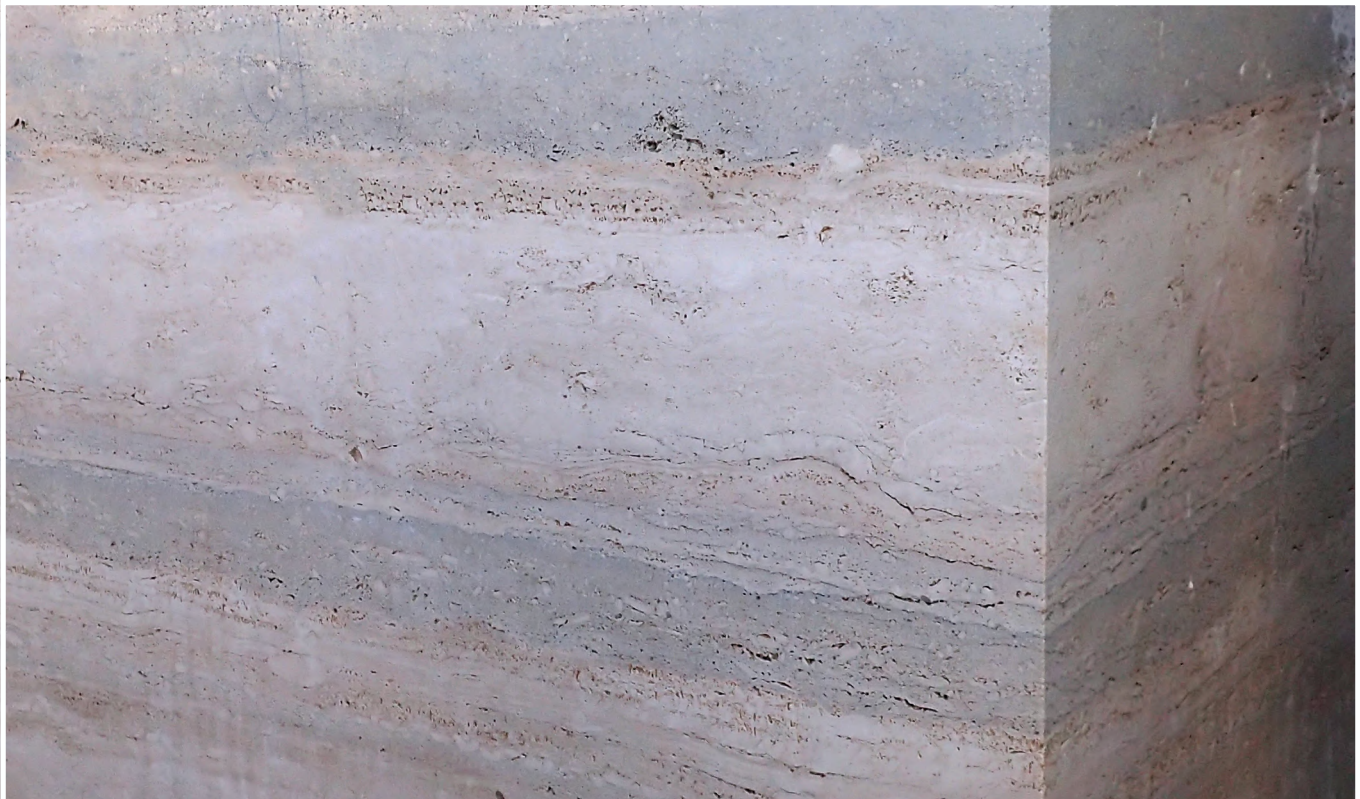
Barcaccia Fountain - Rome - Italy
Year 1623 CE





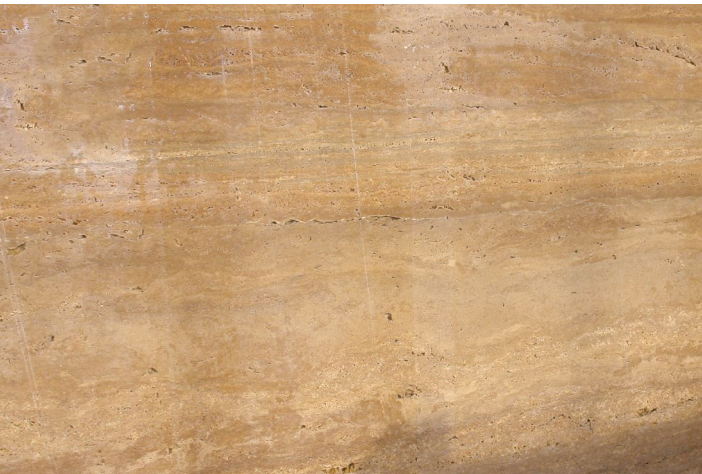
OCEAN BLUE TRAVERTINE





OCEAN BLUE TRAVERTINE

NOCE TRAVERTINE





NOCE TRAVERTINE

Flavian Amphitheatre - Rome - Italy
Year 80 BCE



ROMAN TRAVERTINE

TECHNICAL INFORMATION

Hardness (Mohs): 4,0

Unit Volume by Weight (gr/cm³): 2,5

Density (gr/cm³): 2,72

Water Absorption at Atmospheric Pressure By Weight (%): 1

Porosity (%): 2,3

Compressive Strength (kg / cm²): 570

Compressive Strength after Freezing (kg/cm²): 852

Average Abrasion Strength (cm³/50cm²): 28,7

LAPIS URBE SRL

TRAVERTINO ROMANO

Address: Via Primo Brega, 12 - 00011 Tivoli Terme - Rome - Italy
Telephone: +39 0774 705142 - **Email:** info@lapisurbe.it - **Web:** www.lapisurbe.it