



LAPIS  **URBE** SRL
TRAVERTINO ROMANO

Project List



EXTRACTION • PROCESSING • TRADING TRAVERTINO ROMANO

Lapis Urbe was born in year 2013 as an artisan company specialised in the extraction and processing of "Real Roman Travertine", coming only from the extraction areas of Tivoli and Guidonia, at Rome's doorstep in Italy.

In 2015 Lapis Urbe thanks to the quality of its travertines and the projects developed in collaboration with renowned architectural firms, strengthens its presence on the national market while at the same time expanding the business on new international paths.

The expertise gained over the years, the entrepreneurial skills of the work team, and the cutting-edge technology used, make Lapis Urbe today able to effectively respond to the dynamism of the natural stone industry.

A handwritten signature in white ink, appearing to read 'M: Castaldi', is positioned above the name of the Chief Executive Officer.

Dott. Mario Castaldi
Chief Executive Officer





TUB STATION

TECHNICAL INFORMATION

Material : Travertino Romano Silver

Finishes: Resin Filled + Honed

Quantity : 7500 M2

Place : Naples, Italy.

Year : 2021







ROLEX BUILDING

TECHNICAL INFORMATION

Material : Travertino Romano Classico

Finishes : Unfilled + Honed

Quantity : 700 M2

Place : Lussemburgo

Year : 2018

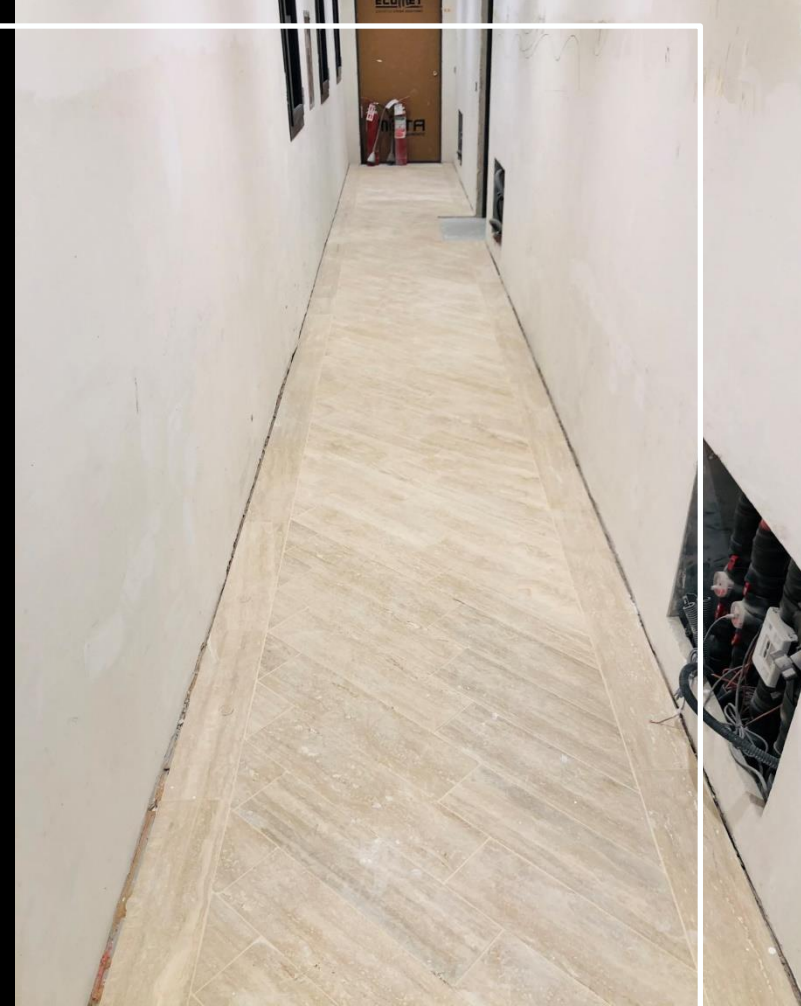
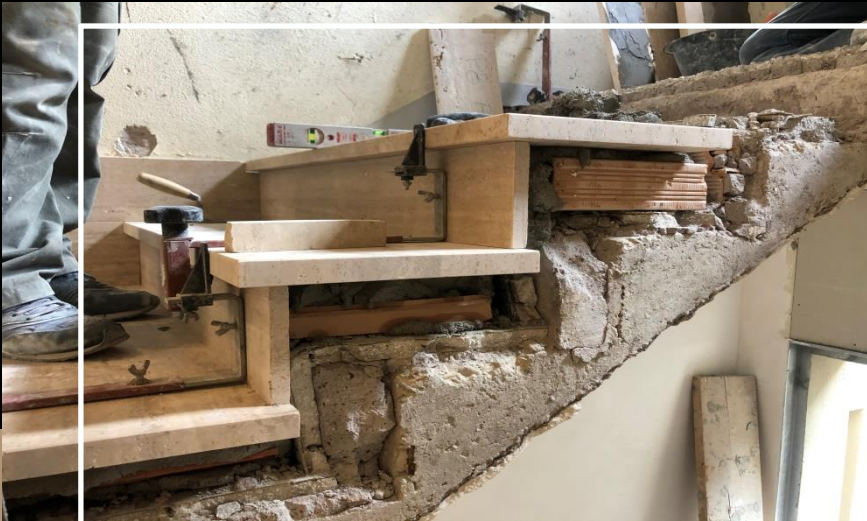




ROLEX







RESIDENTIAL COMPLEX

TECHNICAL INFORMATION

Material : Travertino Romano Classico

Finishes : Cement Filled + Honed

Quantity : 1000 M2

Place : Rome, Italy.

Year : 2021

PUBLIC SQUARE

TECHNICAL INFORMATIONS

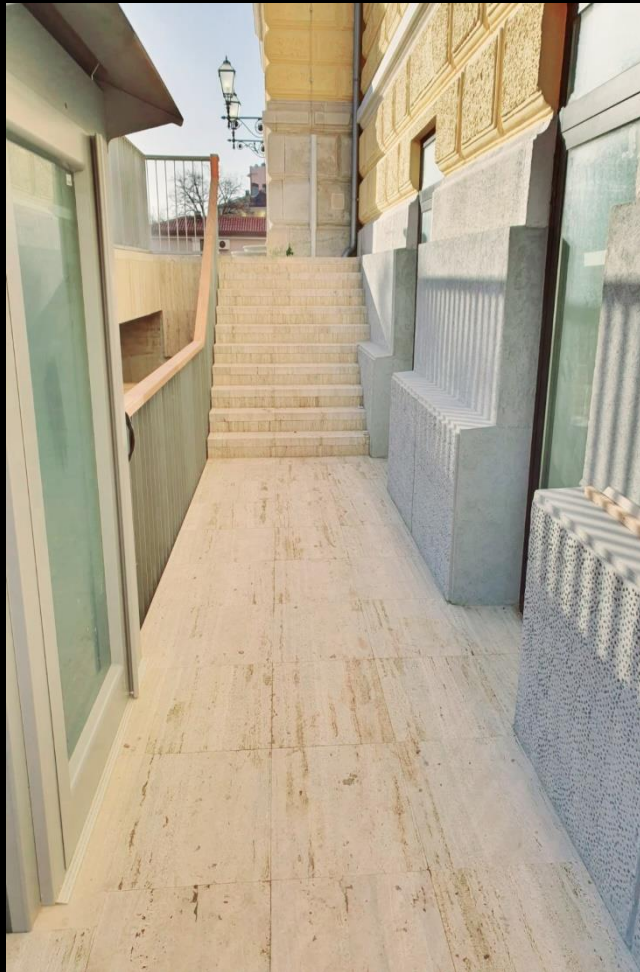
Material : Travertino Romano Classico

Finishes : Unfilled + Brushed

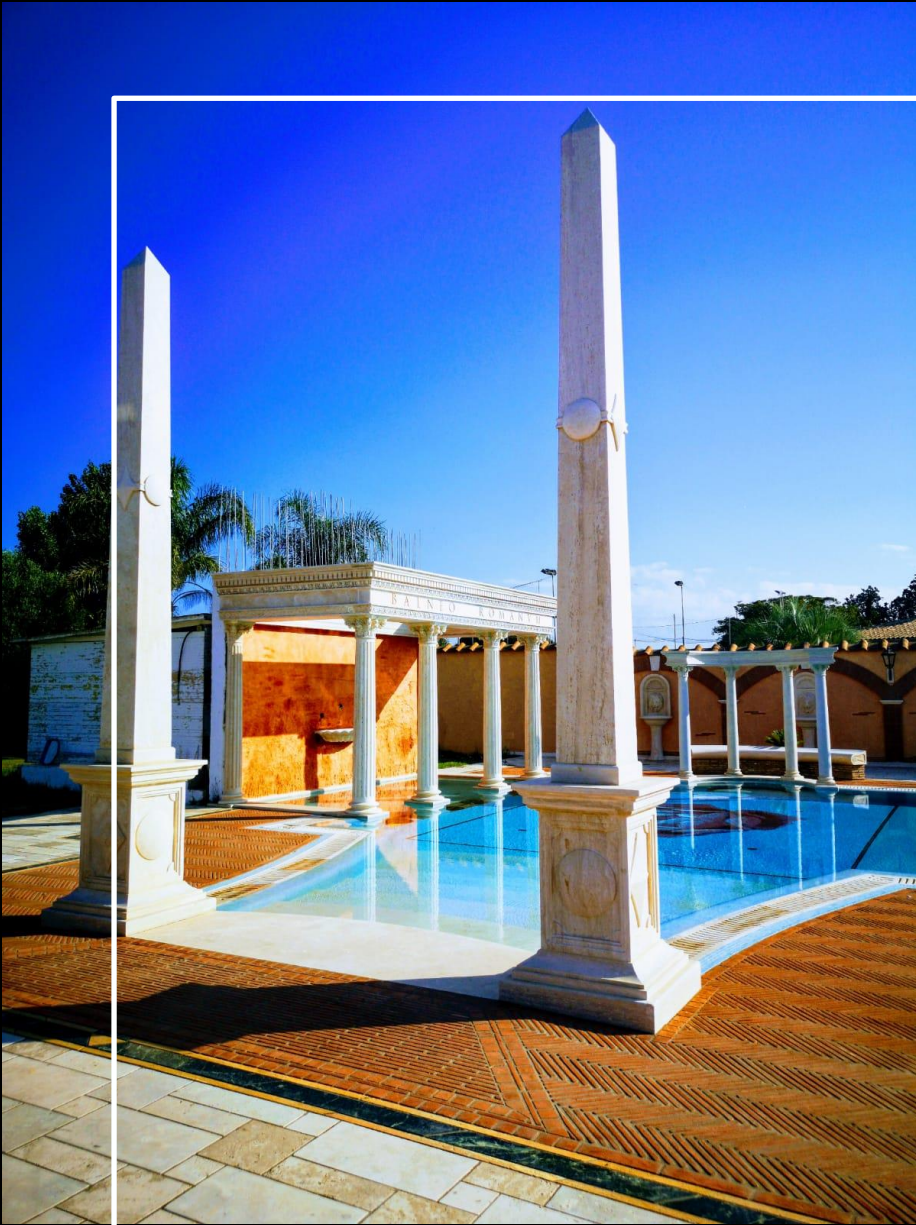
Quantity : 700 M2

Place : Pola, Croatia.

Year : 2020







PRIVATE VILLA



TECHNICAL INFORMATION

Material : Travertino Romano Classico

Finishes : Unfilled + Honed

Quantity : 1500 M2

Place : Rome, Italy.

Year : 2019





PUBLIC SQUARE

Material : Travertino Romano Classico

Finishes : Raw

Quantity : 900 M2

Place : Lazio, Italy.

Year : 2021

